



CITY OF BELLE ISLE, FLORIDA

1600 Nela Avenue
Belle Isle, Florida 32809
(407) 851-7730 • FAX (407) 240-2222
www.cityofbelleislefl.org

October 10, 2023

Orange County Utilities
9150 Curry Ford Road, 1st Floor
Orlando, Florida 32825

Dear Orange County Utilities,

Please accept this letter as authorization from the City of Belle Isle to allow Cornerstone Charter Academy and its agent, Florida Engineering Group, Inc., to install the proposed 3-inch force main under Randolph Avenue and the 8-inch gravity sewer under Wallace Street as indicated in the attached utility plan.

If you have any questions or need additional information, please contact me at the phone number above.

Sincerely,

Travis Grimm, Police Chief
Interim City Manager

OCU UTILITY NOTES

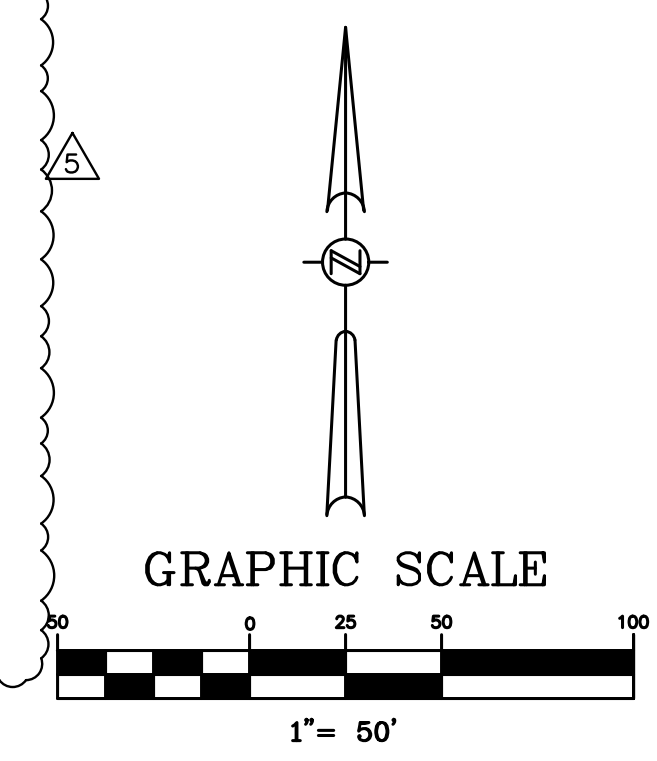
1. THE CONTRACTOR SHALL FIELD VERIFY ALL UTILITIES PRIOR TO START OF ANY CONSTRUCTION AND NOTIFY ENGINEER OF RECORD OF ANY CHANGES OR DISCREPANCIES. THE CONTRACTOR SHALL MAKE PROVISIONS TO AVOID CONFLICTS WHILE MAINTAINING THE DESIGN INTENT & MEETING O.C.U. & F.D.E.P. SEPARATION REQUIREMENTS & CONSTRUCTION STANDARDS. ANY CHANGES TO THE DESIGN INTENT SHALL BE BROUGHT TO THE ATTENTION OF THE ENGINEER OF RECORD. THE ENGINEER SHALL COORDINATE ANY DISCREPANCIES WITH O.C.U.
2. REFER TO O.U.C. &/OR ORANGE COUNTY STANDARD DETAILS FOR ALL UTILITY DESIGN INFORMATION. ALL WATER UTILITY CONSTRUCTION TO BE PER O.U.C. REQUIREMENTS. ALL SANITARY SEWER UTILITY CONSTRUCTION TO BE PER ORANGE COUNTY REQUIREMENTS. PUMPED FIRE LINE CONSTRUCTION AND TESTING TO BE PER ORANGE COUNTY AND ORANGE COUNTY FIRE RESCUE DIVISION REQUIREMENTS.
3. ALL UTILITIES (INCLUDING PUMP STATION) LOCATED OUTSIDE PUBLIC R.O.W. & PUBLIC EASEMENT SHALL BE PRIVATELY OWNED & MAINTAINED.
4. CONTRACTOR SHALL MAINTAIN A MINIMUM OF 3' COVER OVER ALL PROPOSED UTILITIES.
5. CONTRACTOR SHALL NOTIFY THE ORANGE COUNTY PUBLIC UTILITIES CONSTRUCTION DEPARTMENT 48 HOURS PRIOR TO ANY UTILITIES CONSTRUCTION PH. # 407-254-9798.
6. THE CONSTRUCTION OF ALL UTILITIES PROPOSED FOR CONNECTION TO THE ORANGE COUNTY UTILITY SYSTEM SHALL BE IN CONFORMANCE WITH THE ORANGE COUNTY FEBRUARY 2011 STANDARDS & CONSTRUCTION SPECIFICATIONS MANUAL.
7. FOR PVC PIPES THAT WILL BE OWNED & MAINTAINED BY ORANGE COUNTY, ALIGNMENT CHANGES SHALL BE MADE ONLY WITH FITTINGS. LONG RADIUS CURVES, EITHER HORIZONTAL OR VERTICAL, MAY BE INSTALLED BY DEFLECTIONS AT THE JOINTS. MAXIMUM DEFLECTIONS AT PIPE JOINTS, FITTING AND LAYING RADIUS FOR THE VARIOUS PIPE LENGTHS SHALL NOT EXCEED 75 PERCENT OF THE PIPE MANUFACTURER'S RECOMMENDATION.

SANITARY SEWER - LIFT STATION

ASSET TYPE	I.D. NUMBER	PLAN SHEET NUMBER	EASTING	NORTHING	ELEVATION	VOLUME	COMMENTS
BENCH MARK	BM-1	C-25					
PRIVATE LIFT STATION	LS-1	C-25					
PRIVATE LIFT STATION	LS-2	C-23					

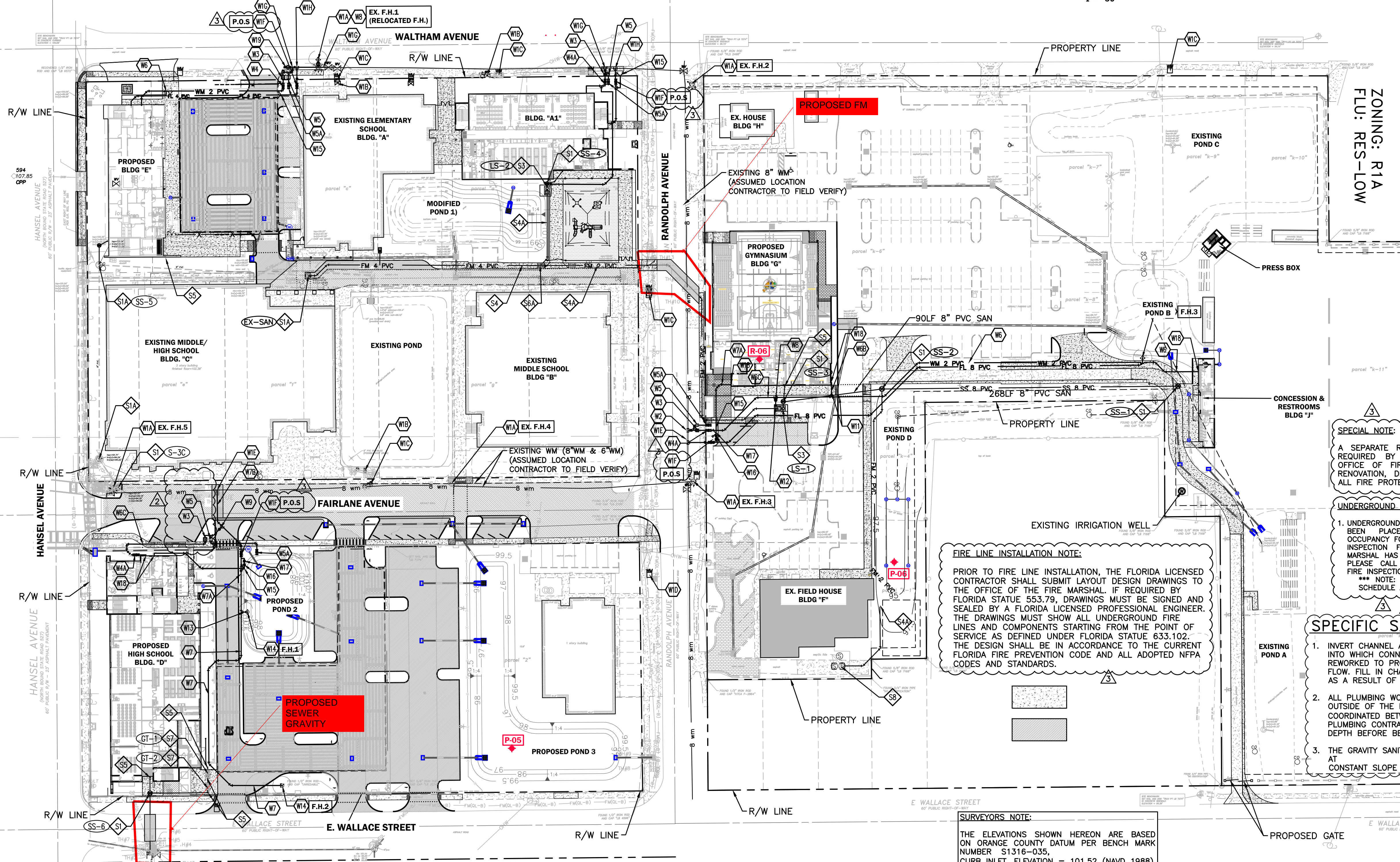
GREASE INTERCEPTOR

ASSET TYPE	I.D. NUMBER	PLAN SHEET NUMBER	EASTING	NORTHING	RIM ELEVATION	VOLUME (GALLONS)	COMMENTS
BENCH MARK	BM-1						
GREASE TRAP	GR-1						



WATER UTILITY KEYNOTES

- W1A. EXISTING FIRE HYDRANT.
- W1B. EXISTING BACKFLOW PREVENTER.
- W1C. NOT USED.
- W1D. EXISTING FDC.
- W1E. CONNECT TO EXISTING OUC 8" WATER MAIN WITH 8"x8" FULL BODY TAPPING SLEEVE AND VALVE BY AN OUC APPROVED TAPPING CONTRACTOR FOR SIZE ON WET TAPS. SEE OUC WATER ENGINEERING FOR APPROVED CONTRACTOR LIST.
- W1F. REDUCED PRESSURE DETECTOR ASSEMBLY (RPDA) BY CONTRACTOR PER OUC STANDARD DETAILS AND 5/8" DETECTOR METER BY OUC. SEE PLAN FOR SIZE.
- W1G. CONNECT TO EXISTING 6" OUC DIP WM WITH 6"x3" FULL BODY TAPPING SLEEVE AND 3" TAPPING VALVE BY AN OUC APPROVED TAPPING CONTRACTOR.
- W1H. CONNECT TO EXISTING 6" OUC DIP WM WITH 6"x4" FULL BODY TAPPING SLEEVE AND 4" TAPPING VALVE BY AN OUC APPROVED TAPPING CONTRACTOR.
- W2. CONNECT TO EXISTING 8" OUC DIP WM WITH 8"x3" FULL BODY TAPPING SLEEVE AND 3" TAPPING VALVE BY AN OUC APPROVED TAPPING CONTRACTOR.
- W3. 2" WATER METER TO BE PROVIDED BY OUC. DEVELOPER'S CONTRACTOR IS RESPONSIBLE FOR BACKFLOW PREVENTER AND SERVICE LINE FROM BACKFLOW PREVENTER TO BUILDING.
- W4. 2" DOMESTIC WATER REDUCED PRESSURE BACKFLOW PREVENTER (BY CONTRACTOR).
- W4A. 3" DOMESTIC WATER REDUCED PRESSURE BACKFLOW PREVENTER (BY CONTRACTOR).
- W5. 1" IRRIGATION METER TO BE PROVIDED BY OUC. DEVELOPER'S CONTRACTOR IS RESPONSIBLE FOR BACKFLOW PREVENTER AND SERVICE LINE FROM BACKFLOW PREVENTER TO BUILDING.
- W5A. 1 1/2" IRRIGATION WATER REDUCED PRESSURE BACKFLOW PREVENTER (BY CONTRACTOR).
- W5B. 1 1/2" CLASS 200, SDR 21 PVC IRRIGATION MAIN. SEE PLAN FOR LENGTH.
- W6. 2" CLASS 200, SDR 21 PVC DOMESTIC WATERLINE. SEE PLAN FOR LENGTH.
- W6A. 1" CLASS 200, SDR 21 PVC DOMESTIC WATERLINE. SEE PLAN FOR LENGTH.
- W6B. 2 1/2" CLASS 200, SDR 21 PVC DOMESTIC WATERLINE. SEE PLAN FOR LENGTH.
- W6C. 3" CLASS 200, SDR 21 PVC DOMESTIC WATERLINE. SEE PLAN FOR LENGTH.
- W7. 8" PVC C-900 DR-18 WATER LINE. LENGTH SEE PLAN. FIRE CONSULTANT TO CONFIRM SIZE PRIOR TO INSTALLATION.
- W7A. 4" PVC C-900 DR-14 FIRE LINE. LENGTH SEE PLAN. FIRE CONSULTANT TO CONFIRM SIZE PRIOR TO INSTALLATION.
- W7B. 8" DIP WATER MAIN PER OUC STANDARDS. SEE PLAN FOR LENGTH.
- W8. GATE VALVE. SEE PLAN FOR SIZE, TYPICAL.
- W9. TEE. SEE PLAN FOR SIZE, TYPICAL.
- W10. BEND W/ RESTRAINED JOINTS, TYPICAL. SEE PLAN FOR ANGLE.
- W11. REDUCER. SEE PLAN FOR SIZE.
- W12. HOSE BIB.
- W13. 6" PVC C-900 DR-18 WATER LINE. SEE PLAN FOR LENGTH.
- W13A. 6" D.I.P WATER MAIN. SEE PLAN FOR LENGTH.
- W14. FIRE HYDRANT ASSEMBLY PER OUC STANDARD DETAIL, TYPICAL, UNLESS NOTED OTHERWISE. FIRE HYDRANTS TO HAVE 7.5' MIN. CLEARANCE ON FRONT & SIDES AND 4' MIN. CLEARANCE ON REAR SIDE.
- W15. FIRE DEPARTMENT CONNECTION.
- W16. CHECK VALVE. SEE PLAN FOR SIZE.
- W17. POST INDICATOR VALVE. SEE PLAN FOR SIZE.
- W18. COORDINATE CONTINUATION WITH PLUMBING AND ARCHITECTURAL PLANS.
- W19. PERMANENT BLOW-OFF PER OUC STANDARD.



SPECIAL NOTE:
A SEPARATE REVIEW AND COUNTY PERMIT IS REQUIRED BY THE CONTRACTOR FROM THE OFFICE OF FIRE MARSHAL FOR INSTALLATION, RENOVATION, DEMOLITION OR MODIFICATION OF ALL FIRE PROTECTION SYSTEMS.

UNDERGROUND & FIRE HYDRANT NOTE:
1. UNDERGROUND AND FIRE HYDRANT HOLDS HAVE BEEN PLACED ON THE CERTIFICATE OF OCCUPANCY FOR THIS PERMIT UNTIL A FINAL FIRE INSPECTION FROM THE OFFICE OF THE FIRE MARSHAL HAS BEEN CONDUCTED AND APPROVED. PLEASE CALL 407-836-0070 TO SCHEDULE A FIRE INSPECTION.
*** NOTE: 48 HOUR NOTICE IS REQUIRED TO SCHEDULE AN INSPECTION ***

FIRE LINE INSTALLATION NOTE:
PRIOR TO FIRE LINE INSTALLATION, THE FLORIDA LICENSED CONTRACTOR SHALL SUBMIT LAYOUT DESIGN DRAWINGS TO THE OFFICE OF THE FIRE MARSHAL. IF REQUIRED BY FLORIDA STATUTE 553.79, DRAWINGS MUST BE SIGNED AND SEALED BY A FLORIDA LICENSED PROFESSIONAL ENGINEER. THE DRAWINGS MUST SHOW ALL UNDERGROUND FIRE LINES AND COMPONENTS STARTING FROM THE POINT OF SERVICE AS DEFINED UNDER FLORIDA STATUTE 633.102. THE DESIGN SHALL BE IN ACCORDANCE TO THE CURRENT FLORIDA FIRE PREVENTION CODE AND ALL ADOPTED NFPA CODES AND STANDARDS.

SPECIFIC SANITARY NOTES:

1. INVERT CHANNEL AND BENCH OF THE MANHOLE INTO WHICH CONNECTIONS WILL BE MADE SHALL BE REWORKED TO PROVIDE A SMOOTH CHANNELIZED FLOW. FILL IN CHANNELS THAT WILL NOT BE USED AS A RESULT OF EXISTING SEWER PIPE REMOVAL.
2. ALL PLUMBING WORK SHALL EXTENDED TO 5FT. OUTSIDE OF THE BUILDING AND IS TO BE COORDINATED BETWEEN SITE AND BUILDING/PLUMBING CONTRACTOR AS TO SIZE, LOCATION AND DEPTH BEFORE BEGINNING WORK.
3. THE GRAVITY SANITARY SEWER MAINS SHALL BE LAID AT CONSTANT SLOPE FROM MANHOLE TO MANHOLE.

SURVEYORS NOTE:
THE ELEVATIONS SHOWN HEREON ARE BASED ON ORANGE COUNTY DATUM PER BENCH MARK NUMBER S1316-035, CURB INLET, ELEVATION = 101.52 (NAVD 1988).

SANITARY SEWER UTILITY KEYNOTES

- S1. SANITARY SEWER MANHOLE (ALL SANITARY MANHOLES ARE PRIVATE).
- S1A. EXISTING SANITARY SEWER MANHOLE.
- S2. 8" PVC ASTM D3034 SDR26 SANITARY MAIN @ MIN. 0.4% SLOPE.
- S2A. 4" PVC ASTM D3034 SDR26 SANITARY LATERAL.
- S3. PRIVATE SANITARY LIFT STATION. REFER TO SHEETS C-35 & C-36 FOR DETAILS.
- S4. 4" PVC FORCE MAIN. FORCE MAIN SHALL HAVE A MINIMUM OF 3' OF COVER. SEE PLAN FOR LENGTHS.
- S4A. 2" PVC FORCE MAIN. FORCE MAIN SHALL HAVE A MINIMUM OF 3' OF COVER. SEE PLAN FOR LENGTHS.
- S5. SANITARY CLEANOUT TOP ELEVATION TO MATCH PROPOSED GRADE. SEE PLANS FOR INVERT.
- S6. BEND W/ RESTRAINED JOINTS, TYPICAL. SEE PLAN FOR ANGLE.
- S6A. 2"x2"x4" WYE CONNECTION.
- S7. GREASE INTERCEPTOR (SEE SHEET C-30 FOR DETAILS).
- S8. EXISTING SANITARY PUMP. CONTRACTOR TO VERIFY.

DATE	REVISIONS	BY	CHECKED
07/24/2023	REVISED PER ARCHITECT COORDINATION DATED 07/05/2023	VP/MS	JAA
08/11/2023	REVISED PER OUC DATED 08/09/2023	VP/MS	JAA
08/14/2023	REVISED PER ORANGE COUNTY FIRE DEPT. DATED 08/07/2023	VP/MS	JAA
08/15/2023	REVISED PER SJRWMD COMMENTS DATED 07/24/2023	VP/MS	JAA
08/16/2023	REVISED PER OCU COMMENTS DATED 07/27/2023	VP/MS	JAA
08/17/2023	REVISED PER CITY OF BELLE ISLE COMMENTS DATED 08/04/2023	VP/MS	JAA
08/17/2023	REVISED PER FDOT COMMENTS DATED 07/11/2023	VP/MS	JAA

**CORNERSTONE CHARTER ACADEMY
CONSTRUCTION PLANS
CITY OF BELLE ISLE, FLORIDA**

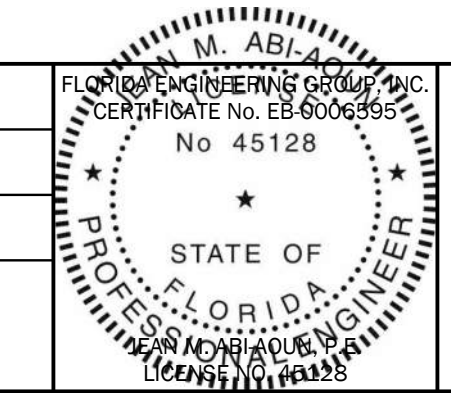


5127 S. Orange Avenue, Suite 200
Orlando, FL 32809
Phone: 407-895-0324
Fax: 407-895-0325
www.feg-inc.us

OVERALL SITE UTILITY PLAN

DESIGNED BY	DRAWN BY	CHECKED BY	APPROVED BY
JAA	VP	JAA	JAA

PROJECT NO.	22-010
SCALE	1" = 50'
DATE	JUNE 23, 2023
SHEET NO.	C-14
SHEET	14 OF 50



THIS ITEM HAS BEEN ELECTRONICALLY SIGNED AND SEALED BY (ENGINEER), P.E. ON (DATE) USING A SHA-1 AUTHENTICATION CODE.
PRINTED COPIES OF THIS DOCUMENT ARE NOT CONSIDERED SIGNED AND SEALED AND THE SHA-1 AUTHENTICATION CODE MUST BE VERIFIED ON ANY ELECTRONIC COPIES.