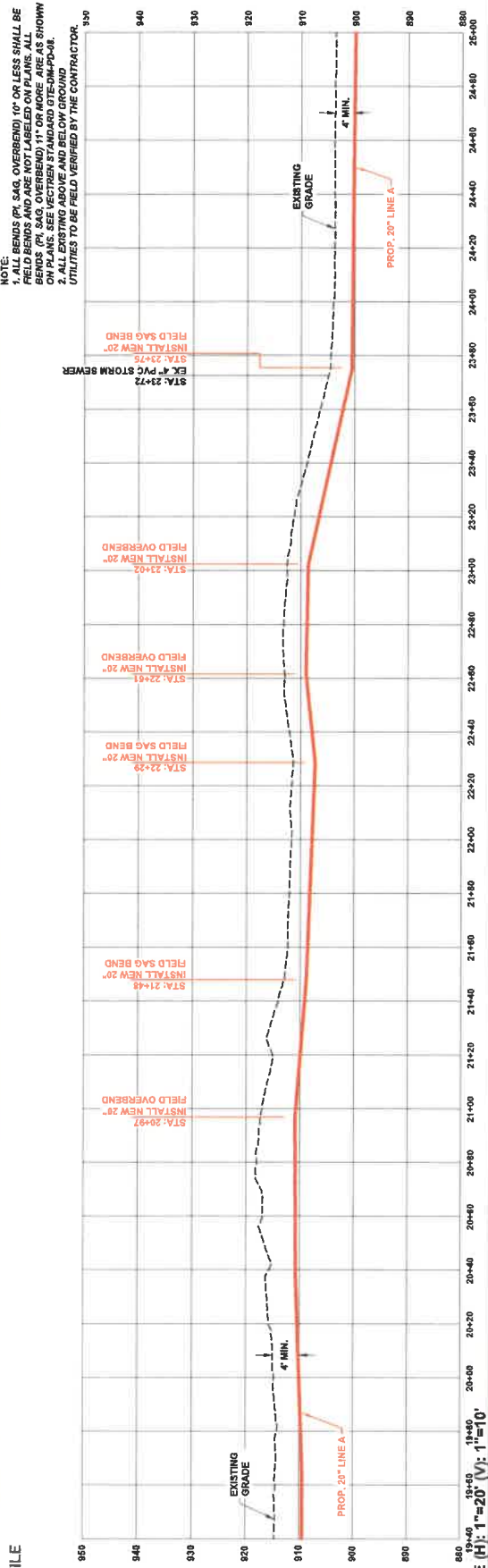


**PROFILE**



**NOTE:**  
 1. ALL BENDS (PI, SAG, OVERBEND) 10" OR LESS SHALL BE FIELD BENDS AND ARE NOT LABELED ON PLANS. ALL BENDS (PI, SAG, OVERBEND) 11" OR MORE ARE AS SHOWN ON PLANS. SEE VECTOR STANDARD DTC-DMP-001.  
 2. ALL FIELD BENDS SHALL BE FIELD VERIFIED BY THE CONTRACTOR.  
 UTILITIES TO BE FIELD VERIFIED BY THE CONTRACTOR.

SCALE (H): 1"=20' (V): 1"=10'



ISSUED FOR CONSTRUCTION 2-19-22



NO.	DATE	BY	DESCRIPTION
0	10/02/2021	ACS	ISSUED FOR BID
1	10/02/2021	ACS	RE-ISSUED FOR REVIEW
2	12/14/2022	ACS	ISSUED FOR CONSTRUCTION

OPERATING CENTER: CENTERVILLE  
 PROJECT: 7254-690  
 CITY/TOWNSHIP: XENA  
 STATE: OH

DIVISION: VIDEO  
 SCALE: 1"=20'

20" LINE A BELLHOOK IN TO KANSY RD.  
 PIPELINE REPLACEMENT  
 20" LINE A - PHASE 5  
 DETAIL SHEET

CenterPoint Energy

DISCLAIMER: ENSITE USA MAKES NO GUARANTEE THAT THIS SURVEY OR THESE MAPS CONTAINS COMPLETE OR CORRECT INFORMATION. THE CONTRACTOR IS RESPONSIBLE FOR VERIFYING THE LOCATION, DEPTH, AND CHARACTERISTICS OF ALL UTILITIES AND OBSTRUCTIONS PRIOR TO ANY EXCAVATION. THE CONTRACTOR IS RESPONSIBLE FOR VERIFYING THE LOCATION, DEPTH, AND CHARACTERISTICS OF ALL UTILITIES AND OBSTRUCTIONS PRIOR TO ANY EXCAVATION.

ENR/MS/SA: 10/26  
 SHEET NO.: 1026  
 SHEET 19 OF 1