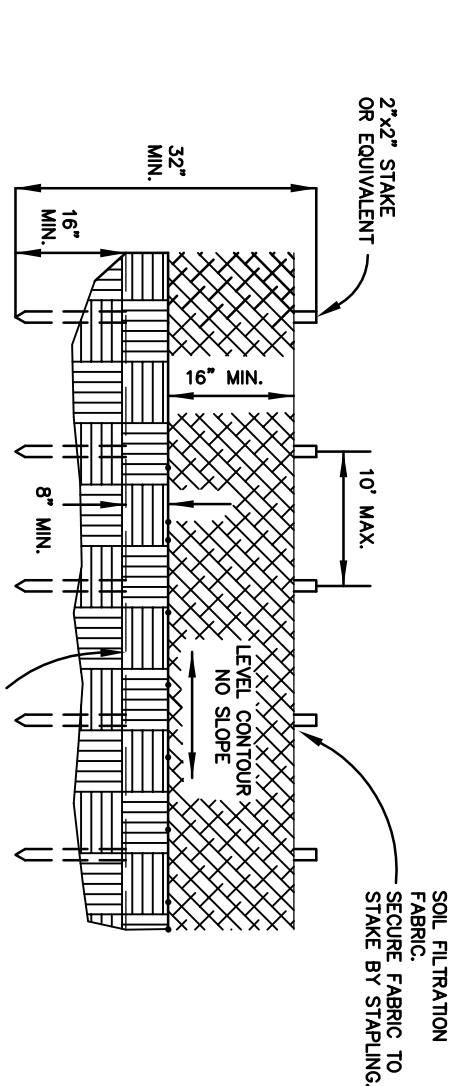


EROSION CONTROL NOTES

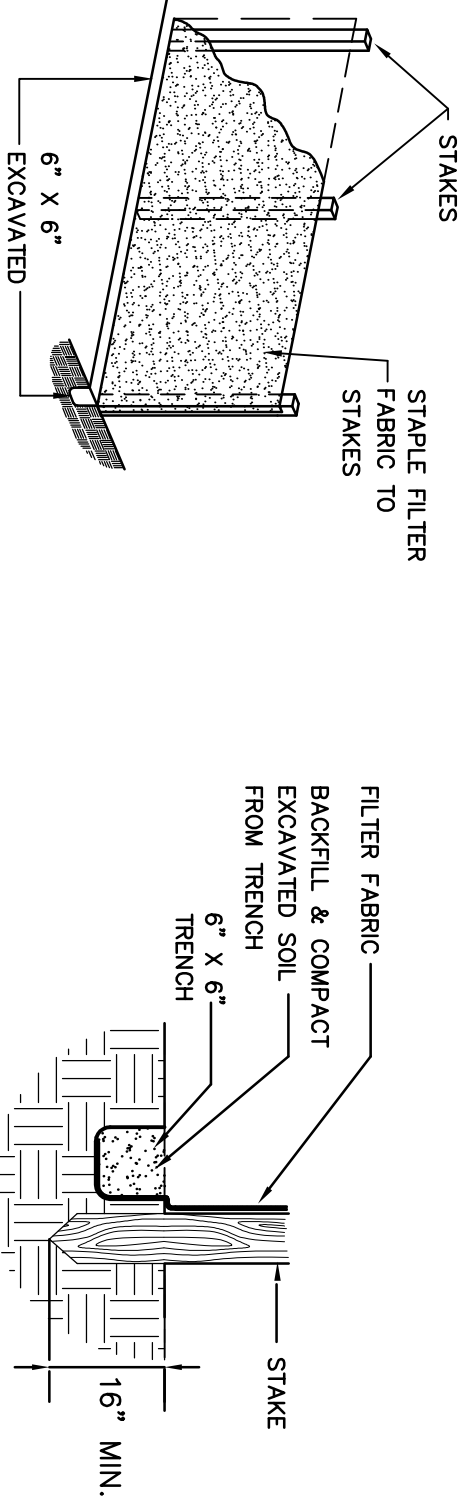
1. ANY TEMPORARY SOIL STOCKPILES SHALL BE PROTECTED FROM EROSION.
2. ALL EROSION CONTROL MEASURES SHALL BE CONSTRUCTED AND MAINTAINED ACCORDING TO "RAINWATER AND LAND DEVELOPMENT, OHIO'S STANDARDS FOR STORMWATER MANAGEMENT, LAND DEVELOPMENT, AND URBAN STREAM PROTECTION", CURRENT EDITION
3. EROSION CONTROL DEVICES AS SHOWN ARE MINIMUM PROTECTION REQUIREMENTS. THE CONTRACTOR IS RESPONSIBLE TO PROVIDE ADDITIONAL DEVICES FOR PROTECTION AT THEIR EXPENSE UNTIL FINAL GROUND IS STABILIZED.

SITE EROSION CONTROL MEASURES INSPECTION SCHEDULE

1. Diversion and Structural Measures – will be inspected at seven (7) day intervals or after every rain storm producing runoff.
2. Vegetative Planting – Spring planting will be checked during summer or early fall.
3. Repairs – Any erosion control measures, structural measures, or other related items in need of repair will be made within seven (7) days.
4. Driveways, ditches and other areas that support a designed flow of water will be mowed regularly to maintain that flow.
5. Seeded areas where the seed has not produced a good cover will be inspected and fertilized as necessary.



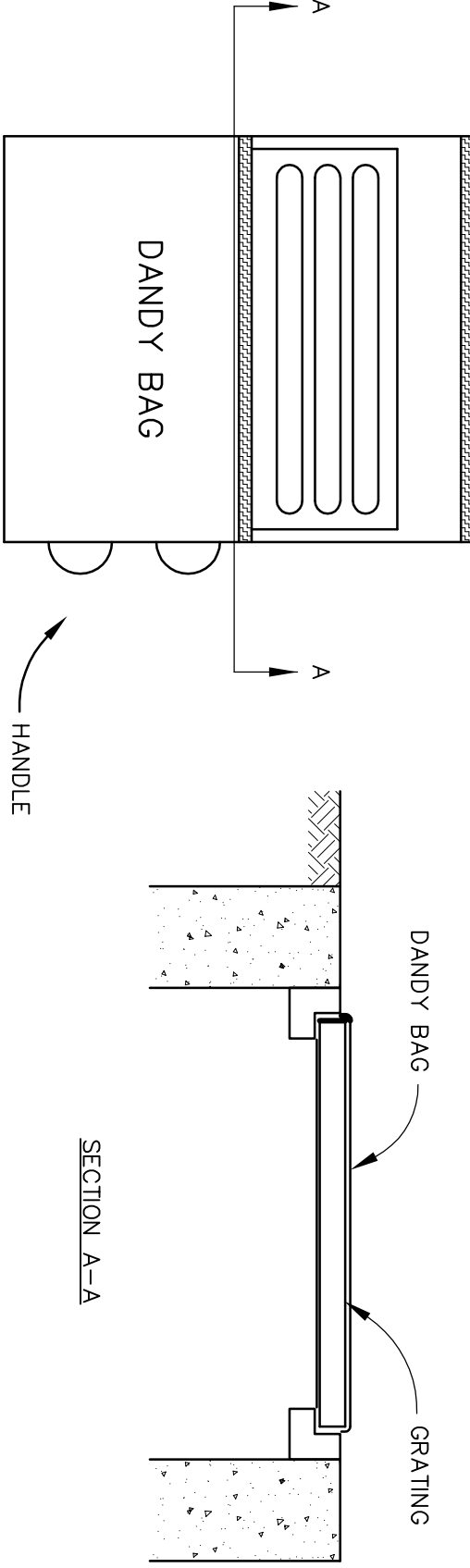
SILT FENCE INSTALLATION DETAIL ~ ELEVATION VIEW



SILT FENCE INSTALLATION DETAIL ~ ISO VIEW

SILT FENCE INSTALLATION DETAIL ~ SECTION VIEW

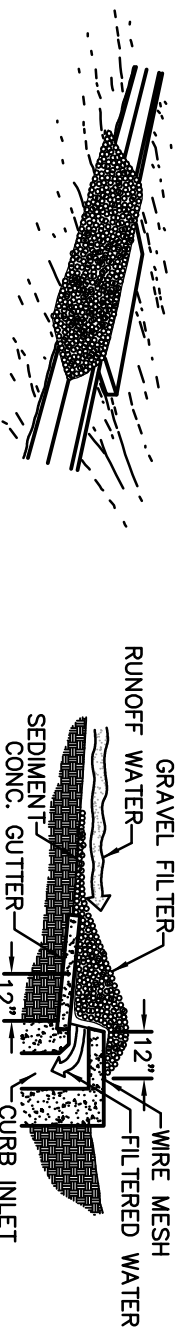
SILT FENCE DETAIL



DANDY BAG

DANDY BAG

DANDY BAG



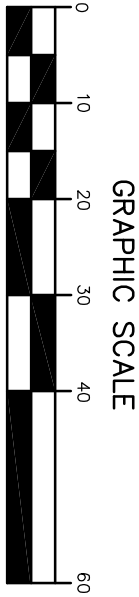
SPECIFIC APPLICATION

THIS METHOD OF INLET PROTECTION IS APPLICABLE TO CURB INLETS WHERE PONDING IN FRONT OF THE STRUCTURE OR DAMAGE TO ADJACENT STRUCTURES AND UNPROTECTED AREAS.

GRAVEL CURB INLET SEDIMENT FILTER

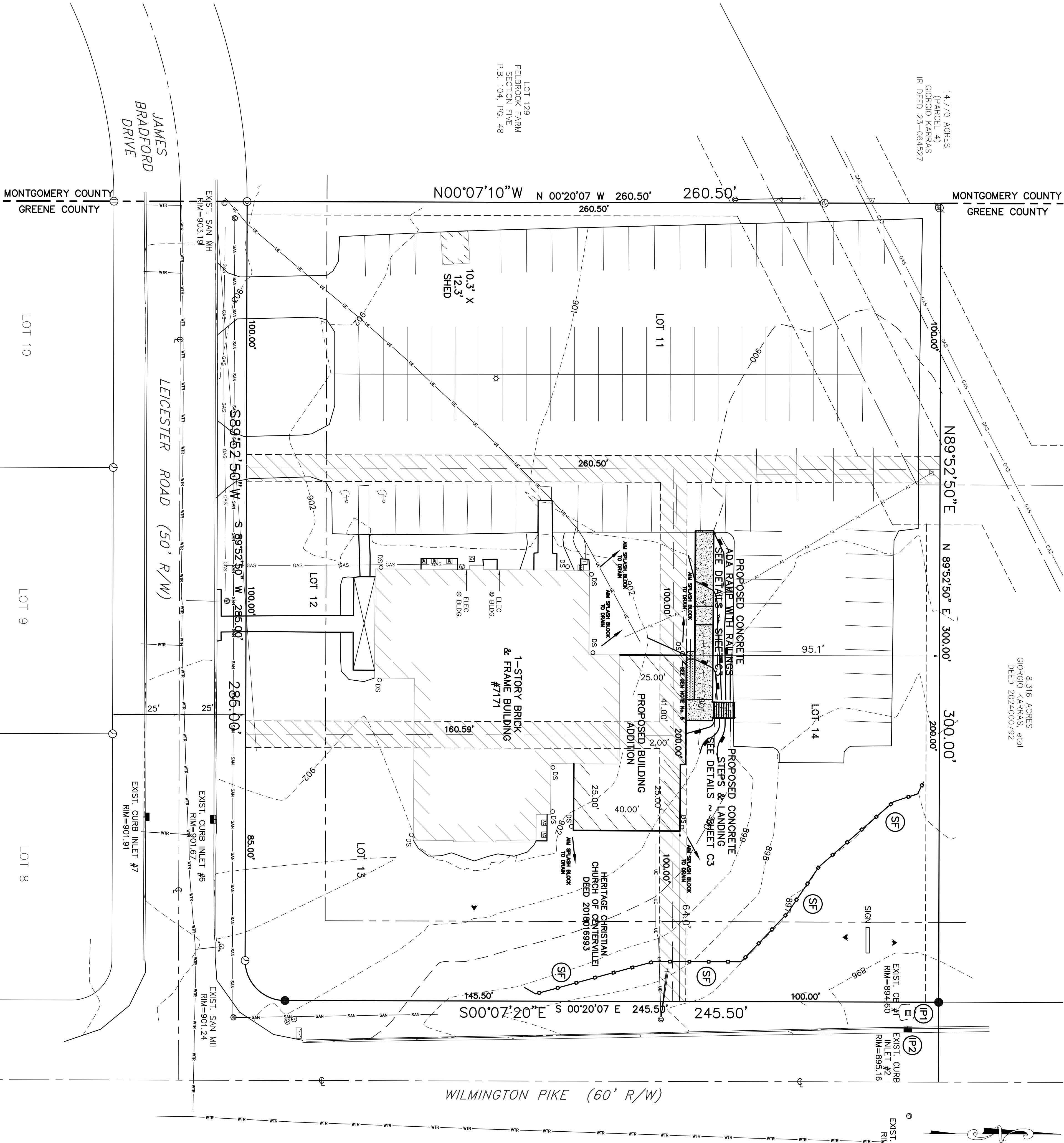
SEDIMENTATION/EROSION CONTROL LEGEND

- (IP1) - INDICATES INLET PROTECTION FOR YARD INLETS
- (IP2) - INDICATES INLET PROTECTION FOR PAVEMENT INLETS
- (SF) - INDICATES SILT FENCING
- DRAINAGE ARROW INDICATING DRAINAGE FLOW



GRAPHIC SCALE

1" = 20'



By: *Thomas Dusa* Reg. Engineer E-49719

HERITAGE CHRISTIAN CHURCH  
BUILDING ADDITION  
7171 WILMINGTON PIKE  
CITY OF BELLBROOK  
GREENE COUNTY, OHIO

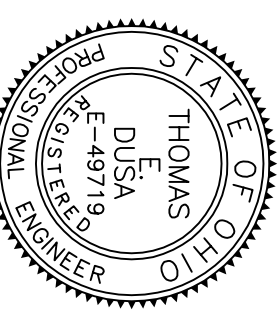
EROSION CONTROL PLAN



Haley-Dusa  
Engineering & Surveying Group, LLC  
270 Regency Ridge Drive, Suite 203  
Dayton, Ohio 45424  
Phone: (937) 439-4300 Fax: (937) 439-2005

PROJECT No.	E3447
DATE	03-26-25
SCALE	1" = 20'
DES.	TED
DR.	JRC
CKD.	TED

No.	DATE	REVISION



SHEET NO.

C4