

Clarkston Drive

Driveway

House

Fence

Pool

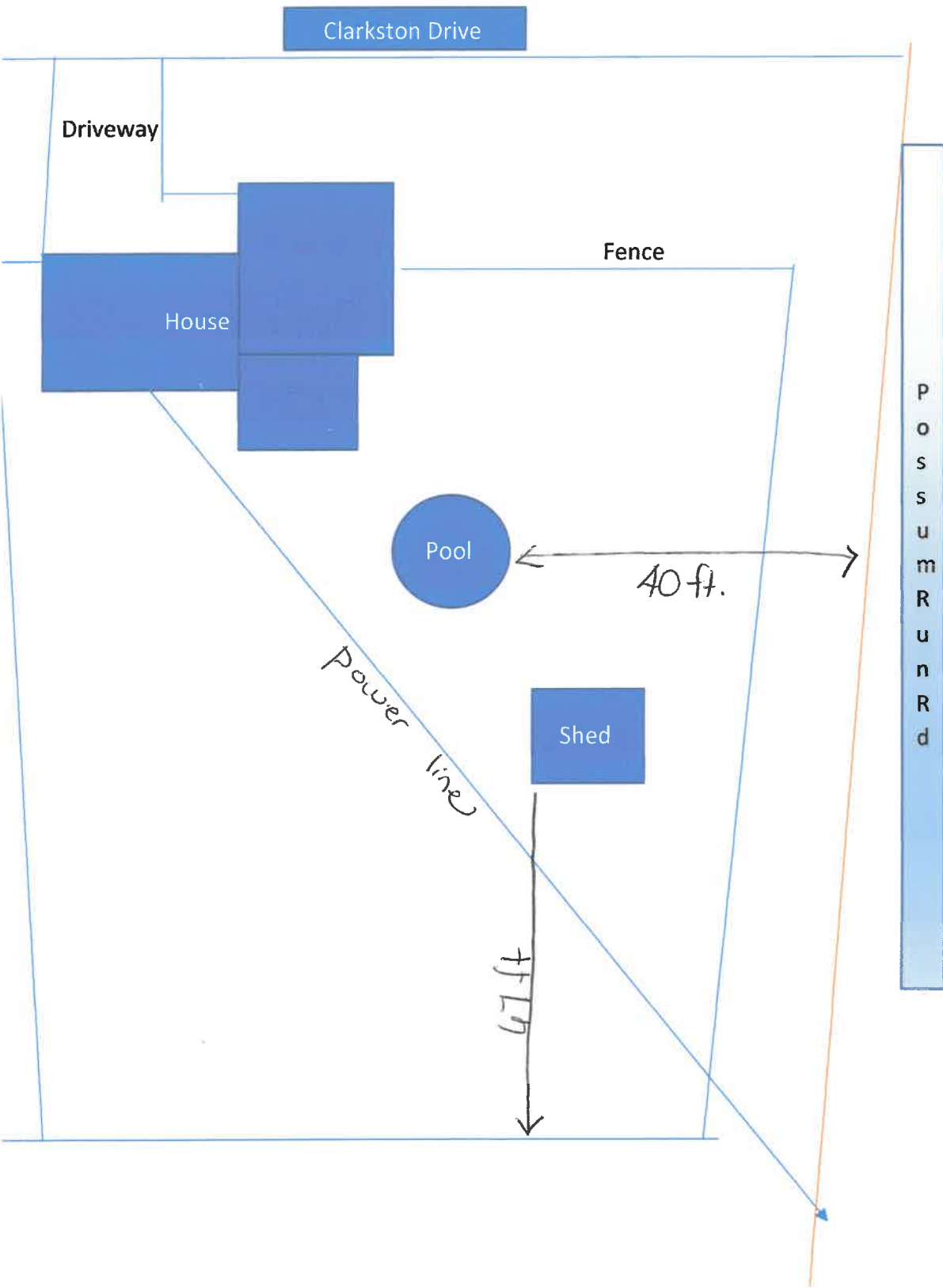
40 ft.

Shed

Power line

67 ft.

P
O
S
S
U
M
E
R
U
N
D
R
O
A
D

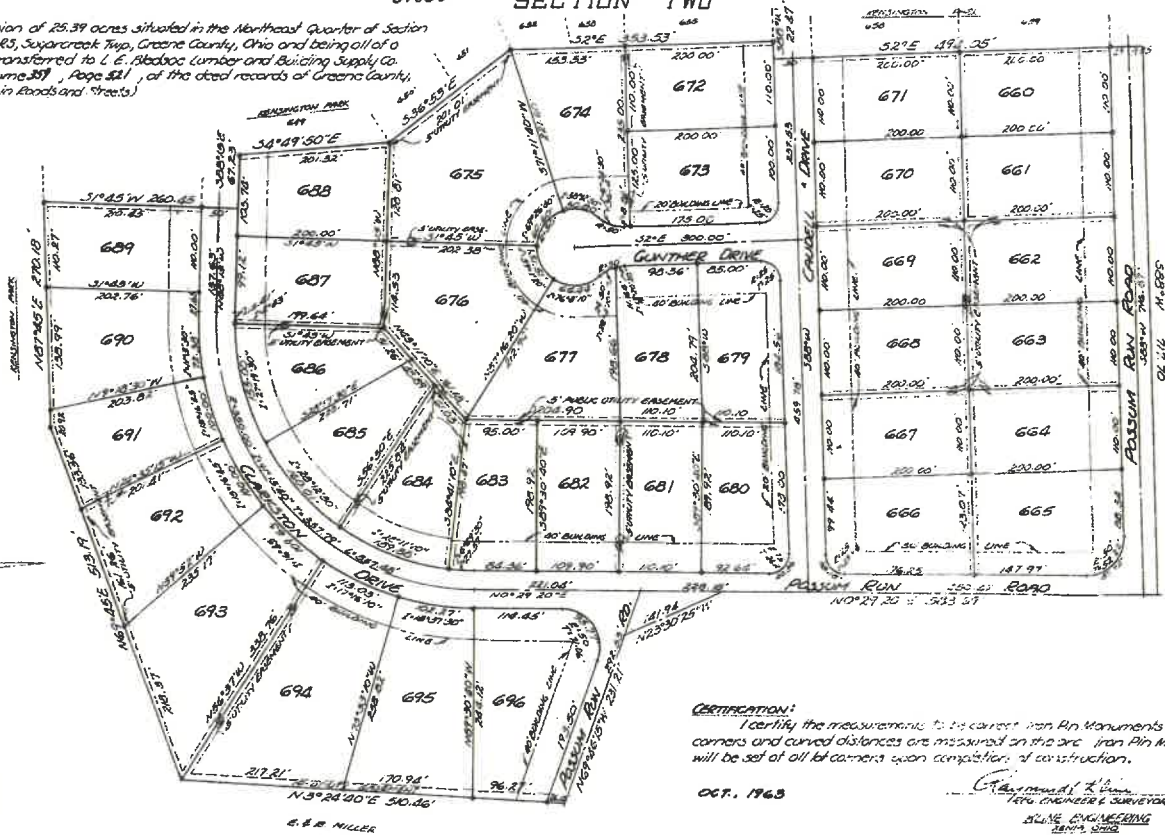


KENSINGTON PARK

37853 SECTION TWO

DESCRIPTION

Being a subdivision of 25.39 acres situated in the Northeast Quarter of Section B, Town 2, Range 6 N.R.3, Sugar Creek Twp, Greene County, Ohio and being all of a 25.38 acre tract as transferred to L. E. Blodoo Lumber and Building Supply Co. and recorded in Volume 387, Page 521, of the deed records of Greene County, Ohio. (Note: 3.42 Ac. in Roads and Streets.)



CERTIFICATION:
I certify the measurements to be correct, iron Pin Monuments of all lot corners and curved distances are measured on the arc, iron Pin Monument will be set at all lot corners upon completion of construction.

OCT. 1963

G. B. Miller
LEVE ENGINEER & SURVEYOR
LEVE ENGINEERING
LEVE, OHIO



Greene County
Ohio