



STAFF REPORT

DATE: February 12, 2025
TO: Ted Henry, City Manager
FROM: Anne Stephens, PE, City Engineer
RE: Bel Aire Lakes Construction Observation Services

Proposal Focus:

Our Mission

- Attractive growth and safe living – Encourage attractive neighborhoods and new developments.

Our Values

- Working Together – Departments working together as one team. Staff working with residents, HOA's and neighborhoods. Citizens working with each other.

Current Situation:

The construction of the water and sewer in the Bel Aire Lakes subdivision is ongoing and needs construction observation. PEC was contracted with last October to provide construction observation and construction administration services. During the bidding process, the contractual amount of working days allotted for the project was increased from 60 working days to 100 working days.

Goals:

- To work with the Developer to grow the City in an attractive, safe manner that is consistent with City standards.

Discussion:

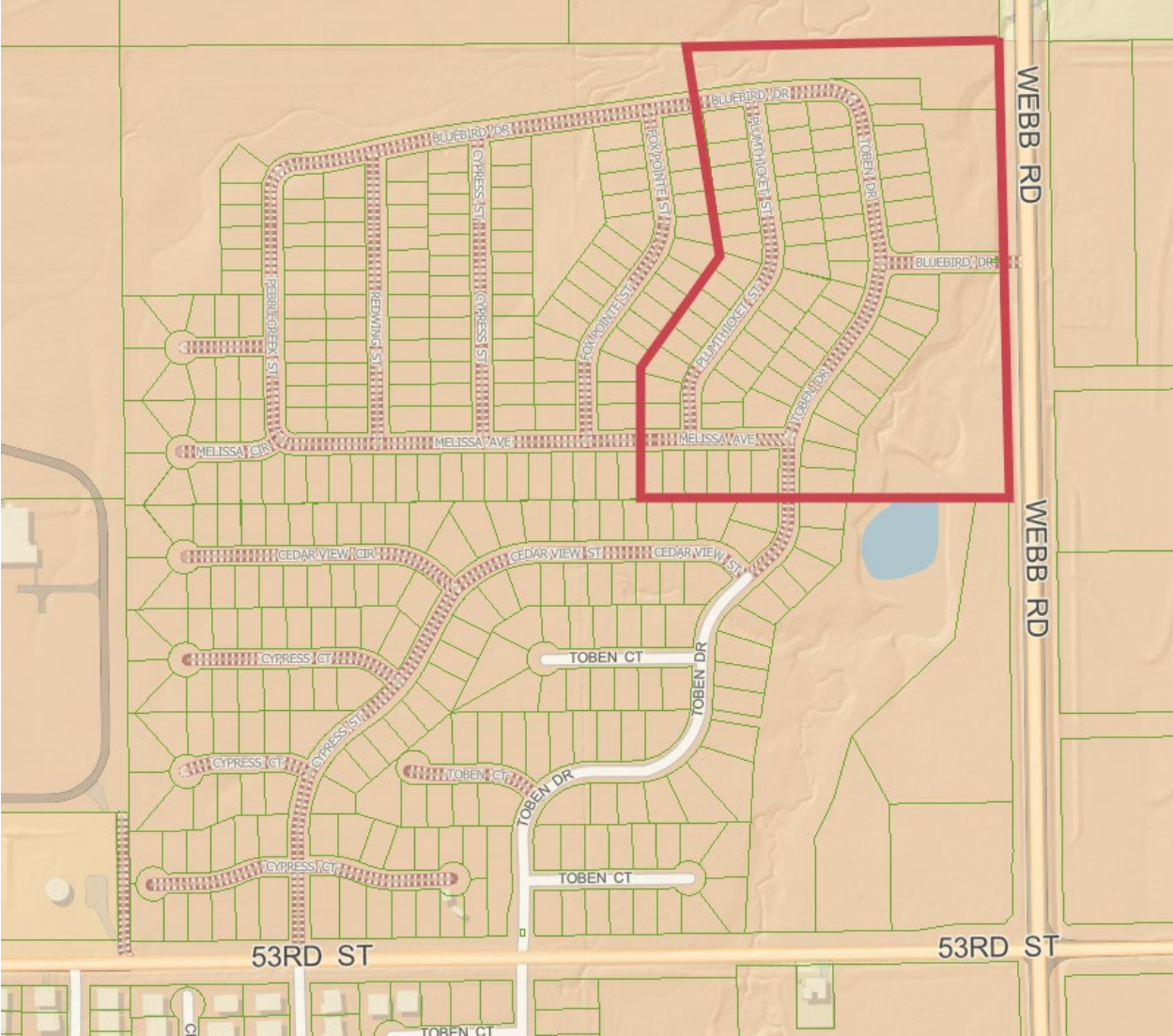
Due to concerns from Contractors, the number of working days was increased during the bidding process from 60 days to 100 days. This change necessitated a change in the construction observation and construction administration fee since the fee is based on hours of observation performed. Additionally, it was noticed that the PEC contract did not have as-built surveying included in their scope of work. This supplemental agreement includes PEC's costs for the additional 40 working days (charged on an hourly basis) and their costs for the as-built survey and input into the City's GIS database of key components of the water and sanitary sewer infrastructure.

Financials:

The costs associated with the project will be financed through a bond and spread as special assessments against the benefiting lots.

Recommendation:

Staff recommends that the City Council accept the Supplemental Agreement with PEC for Construction Observation services for \$36,900.00.



February 6, 2025

Anne Stephens
Public Works Director/City Engineer
City of Bel Aire
7651 E. Central Park Avenue
Bel Aire, Kansas 67226

Reference: Project Name: Bel Aire – Lakes Addition Construction
Observation and Administration
Supplemental Agreement No. 1
Original Contract Date: November 21, 2024
PEC Project No. 31-237363-014-2564

Dear Mrs. Stephens:

This Supplemental Agreement between the Client and Professional Engineering Consultants, P.A. (PEC), modifies the above referenced Agreement, and any other previous Supplemental Agreements as may be noted herein.

A. Modification of Scope:

1. Provide additional construction administration and inspection services for an additional 40 working days.
2. Geographic Information Systems (GIS) Services as follows:
 - a) Convert proposed Sanitary Sewer Utility and Water Utility features from the design plans to CLIENT's ArcGIS Online organization.
 - b) Project all features to NAD83 KS State Plane South coordinate system.
 - c) Populate applicable attributes as identified on the design plans.
 - d) GPS above ground appurtenances.
 - e) Measure constructed Sanitary Sewer flowlines (only those available from opening manhole lids).

B. Payment Provisions:

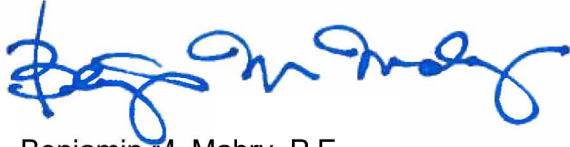
- | | |
|--|----------------------------|
| 1. Original Contract Amount: | \$ 43,400.00 |
| 2. Net change by previous Supplemental Agreement(s): | \$ 0.00 |
| 3. The contract amount will increase by this Supplemental Agreement: | <u>\$ 36,900.00</u> |
| 4. The new contract amount including this Supplemental Agreement: | \$ 80,300.00 |

C. Authorization to Proceed:

1. Return receipt of this executed Supplemental Agreement will be considered our authorization to proceed.

Sincerely,

PROFESSIONAL ENGINEERING CONSULTANTS, P.A.

A handwritten signature in blue ink, appearing to read "Ben Mabry", is written over the printed name.

Benjamin M. Mabry, P.E.
VP Municipal Transportation Engineering

BMM:mmm

ACCEPTED:

CITY OF BEL AIRE

By: _____

Title: _____

Date: _____