

NW COR, NW1/4, SEC 24,
TWP 26S, RNG 1E

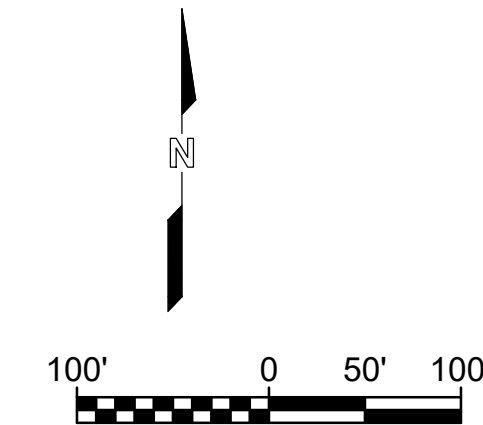
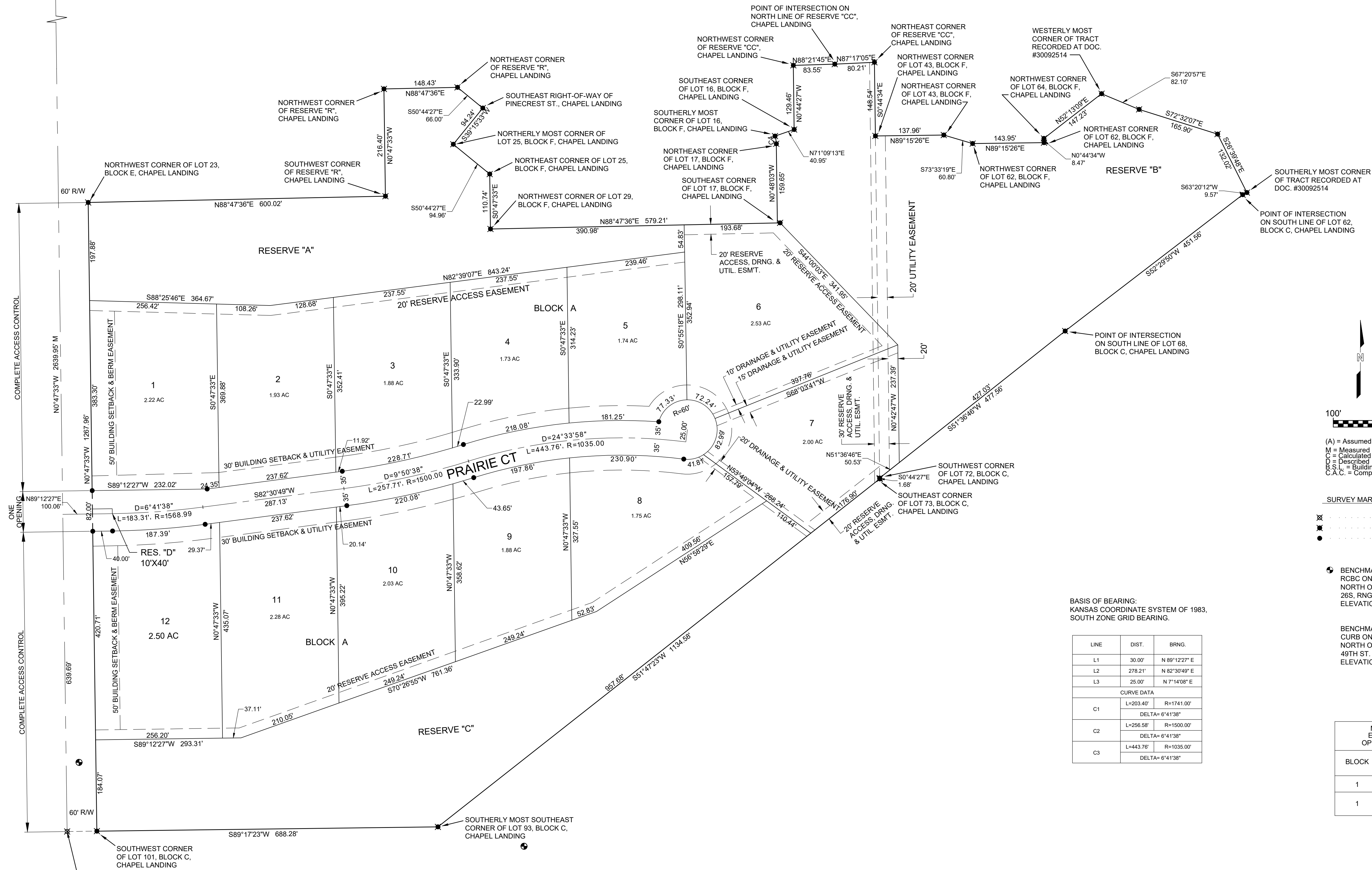
SW COR, NW1/4, SEC 24,
TWP 26S, RNG 1E

SHEET 1 OF 2

THE PRAIRIE PRESERVE

Replat of Part of Chapel Landing

Tract Located in The NW 1/4, Sec. 24, Twp. 26S, Rng. 1E of the 6th P.M.
Bel Aire, Sedgwick County, Kansas



(A) = Assumed Kansas Zone South Grid Bearing
M = Measured
C = Calculated
D = Described
B.S.L. = Building Setback Line
C.A.C. = Complete Access Control

SURVEY MARKER LEGEND

- 5/8" REBAR (FOUND - ORIGIN UNKNOWN)
- 5/8" REBAR W/GARVER CAP (SET)
- MONUMENT TO BE SET WITH THE STREET CONSTRUCTION PROJECT BY THE STREET DESIGNER

BENCHMARK: CHISELED SQUARE ON THE TOP
RCBC ON THE EAST SIDE OF OLIVER ST. AT 139'
NORTH OF SW COR. OF THE NW 1/4, SEC 24, TWP
26S, RNG 1E
ELEVATION = 1405.20 (NAVD88, G18)

BENCHMARK: CHISELED SQUARE ON THE TOP
CURB ON EAST SIDE OF PARKHURST ST, 124'
NORTH OF THE CENTERLINE INTERSECTION OF
49TH ST.
ELEVATION = 1415.60 (NAVD88, G18)

BASIS OF BEARING:
KANSAS COORDINATE SYSTEM OF 1983,
SOUTH ZONE GRID BEARING.

LINE	DIST.	BRNG.
L1	30.00'	N 89°12'27" E
L2	278.21'	N 82°30'49" E
L3	25.00'	N 7°14'08" E
CURVE DATA		
C1	L=203.40'	R=1741.00'
	DELTA= 6°41'38"	
C2	L=256.58'	R=1500.00'
	DELTA= 6°41'38"	
C3	L=443.76'	R=1035.00'
	DELTA= 6°41'38"	

MINIMUM BUILDING PAD ELEVATION FOR LOWEST OPENING INTO STRUCTURES		
BLOCK	LOT NO.	ELEVATION (NAVD88)
1	1,2,3,4,5	1405.0
1	6,7,8,9 10,11,12	1406.0

DWG FILE: 21S04011 SURVEY BASE
PROJECT NO. 21S04011
PREPARED: 10/15/2021



GARVER
8535 E. 21st Street N.
Suite 130
Wichita, KS 67206
(316) 264-8008
www.GarverUSA.com