

STAFF REPORT

DATE: August 30, 2022

TO: City Manager

FROM: Anne Stephens, PE, City Engineer

RE: Chapel Landing Ph 2 & Homestead Senior Landing Utility Bids



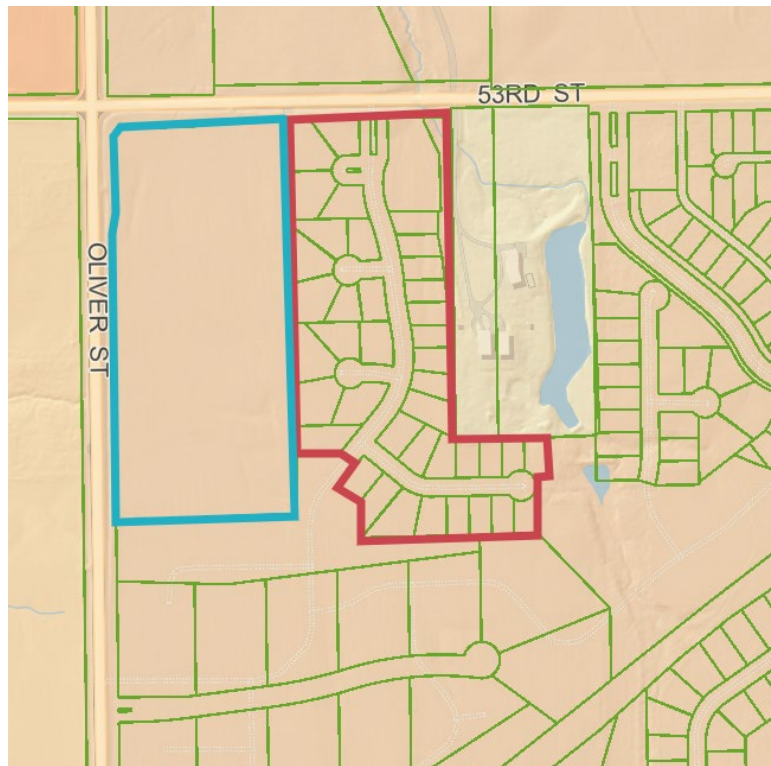
BACKGROUND:

The Developers are ready to begin the development of Chapel Landing, Phase 2 and Homestead Senior Landing.

DISCUSSION:

Baughman worked with both Developers and designed the water, joint sanitary sewer and drainage improvements serving Chapel Landing, Phase 2 and Homestead Senior Landing. Bids were accepted on August 9th. Three contractors responded to the solicitation.

Contractor	Engineer's Estimate	Mies	Nowak	Dondlinger
Lift Station, Force Main and Gravity Main	\$1,136,868.00	\$859,476.00	\$901,854.50	\$1,124,780.22
Part "B" Sanitary Sewer	\$113,073.00	\$80,972.00	\$101,113.50	\$90,572.46
Part "C" Sanitary Sewer	\$400,632.00	\$318,149.50	\$385,743.00	\$415,911.59
Water Improvements	\$212,156.00	\$219,365.00	\$239,550.00	\$355,491.00
Storm Water Improvements	\$368,704.50	\$420,088.20	\$366,322.00	\$403,116.50
Total	\$2,231,433.50	\$1,898,050.70	\$1,994,583.00	\$2,389,871.77



FINANCIAL CONSIDERATIONS: The cost of the improvements for these projects will be financed through a bond and spread as special assessments against the benefiting lots. The low bid for the storm water drainage improvements was over the Engineer's Estimate. After discussions with the Developer and the Contractor, a change order removing the "Excavation, Borrow (LVC)" will accompany the contract documents, thus reducing the total cost of the section to within the petition amount.

POLICY DECISION: Staff adhered to the purchasing policy in gathering a minimum of three bids.

RECOMENDATION: Staff recommends that the City Council accept the bid from Mies for \$1,898,050.70.

TABULATION OF BIDS INCLUDING ADDENDUMS 1, 2, & 3
CHAPEL LANDING ADDITION, PH 2 & HOMESTEAD SENIOR LANDING ADDITION
BELAIRE, KANSAS
Sanitary Sewer Projects Part "A", "B", & "C", Water Line Part "D", & Storm Water Drain Improvements Part "E"
Bid Date: August 9th, 2022

			Engineer's Estimate		Mies Construction		Nowak Construction		Dondlinger & Sons Construction					
Bid Items:	Quantities	Unit	Bid Price	Total	Bid Price	Total	Bid Price	Total	Bid Price	Total	Bid Price	Total	Bid Price	Total
SS IMPROVEMENTS PART "A"														
Pump Station Unit	1	LS	\$566,000.00	\$566,000.00	\$530,000.00	\$530,000.00	\$512,000.00	\$512,000.00	\$525,000.00	\$525,000.00				
Pipe, SS 8"	972	LF	\$50.00	\$48,600.00	\$32.00	\$31,104.00	\$47.00	\$45,684.00	\$58.00	\$56,376.00				
Pipe, SS 10"	1,303	LF	\$62.00	\$80,786.00	\$40.00	\$52,120.00	\$60.00	\$78,180.00	\$71.00	\$92,513.00				
Pipe Stub, 8"	4	EA	\$600.00	\$2,400.00	\$375.00	\$1,500.00	\$350.00	\$1,400.00	\$1,400.00	\$5,600.00				
Pipe Stub, 10"	1	EA	\$750.00	\$750.00	\$450.00	\$450.00	\$500.00	\$500.00	\$1,500.00	\$1,500.00				
MH, Standard SS (4')	9	EA	\$6,000.00	\$54,000.00	\$3,700.00	\$33,300.00	\$4,500.00	\$40,500.00	\$4,700.00	\$42,300.00				
Connect to Existing MH	1	EA	\$3,500.00	\$3,500.00	\$250.00	\$250.00	\$1,500.00	\$1,500.00	\$1,250.00	\$1,250.00				
Pipe, SS Force Main 6"	3,147	LF	\$48.00	\$151,056.00	\$30.00	\$94,410.00	\$41.00	\$129,027.00	\$52.00	\$163,644.00				
Air Release Assy.	2	EA	\$10,000.00	\$20,000.00	\$6,050.00	\$12,100.00	\$5,900.00	\$11,800.00	\$3,000.00	\$6,000.00				
Air Testing, SS Pipe and Force Main	5,422	LF	\$1.00	\$5,422.00	\$0.50	\$2,711.00	\$0.75	\$4,066.50	\$1.51	\$8,187.22				
Pipe, SWS 24"	40	LF	\$65.00	\$2,600.00	\$74.00	\$2,960.00	\$85.50	\$3,420.00	\$95.00	\$3,800.00				
Pipe, End Section SWS 24"	2	EA	\$2,000.00	\$4,000.00	\$700.00	\$1,400.00	\$900.00	\$1,800.00	\$2,500.00	\$5,000.00				
Rip-Rap, Light Stone	18	SY	\$100.00	\$1,800.00	\$50.00	\$900.00	\$67.00	\$1,206.00	\$98.00	\$1,764.00				
Dewatering	1	LS	\$50,000.00	\$50,000.00	\$9,000.00	\$9,000.00	\$10,000.00	\$10,000.00	\$30,000.00	\$30,000.00				
Project Seeding	1	LS	\$25,000.00	\$25,000.00	\$6,680.00	\$6,680.00	\$6,680.00	\$6,680.00	\$6,680.00	\$6,680.00				
BMP, Construction Entrance	2	EA	\$2,500.00	\$5,000.00	\$500.00	\$1,000.00	\$550.00	\$1,100.00	\$750.00	\$1,500.00				
BMP, Ditch Checks	12	EA	\$800.00	\$9,600.00	\$130.00	\$1,560.00	\$130.00	\$1,560.00	\$130.00	\$1,560.00				
BMP, Silt Fence	1,354	LF	\$1.00	\$1,354.00	\$1.50	\$2,031.00	\$1.50	\$2,031.00	\$1.50	\$2,031.00				
Site Clearing and Restoration	1	LS	\$90,000.00	\$90,000.00	\$65,500.00	\$65,500.00	\$42,800.00	\$42,800.00	\$165,000.00	\$165,000.00				
Traffic Control	1	LS	\$15,000.00	\$15,000.00	\$10,500.00	\$10,500.00	\$6,600.00	\$6,600.00	\$5,075.00	\$5,075.00				
SUBTOTAL SANITARY SEWER IMPROVEMENTS			\$1,136,868.00		\$859,476.00		\$901,854.50		\$1,124,780.22					
SS IMPROVEMENTS PART "B"														
Pipe, SS 8"	1,288	LF	\$50.00	\$64,400.00	\$34.00	\$43,792.00	\$58.00	\$74,704.00	\$50.00	\$64,400.00				
Pipe, SS Stub, 8"	4	EA	\$450.00	\$1,800.00	\$321.00	\$1,284.00	\$300.00	\$1,200.00	\$150.00	\$600.00				
MH, Standard SS (4')	4	EA	\$4,500.00	\$18,000.00	\$3,700.00	\$14,800.00	\$4,200.00	\$16,800.00	\$4,200.00	\$16,800.00				
Air Testing, SS Pipe	1,288	LF	\$1.00	\$1,288.00	\$2.00	\$2,576.00	\$1.50	\$1,932.00	\$2.17	\$2,794.96				
BMP, Construction Entrance	1	EA	\$1,000.00	\$1,000.00	\$500.00	\$500.00	\$600.00	\$600.00	\$750.00	\$750.00				
BMP, Silt Fence	1,585	LF	\$1.00	\$1,585.00	\$2.00	\$3,170.00	\$1.50	\$2,377.50	\$1.50	\$2,377.50				
Maintain Existing BMPs	1	LS	\$800.00	\$800.00	\$200.00	\$200.00	\$150.00	\$150.00	\$200.00	\$200.00				
Seeding	1	LS	\$3,000.00	\$3,000.00	\$1,150.00	\$1,150.00	\$1,150.00	\$1,150.00	\$1,150.00	\$1,150.00				
Seeding, Temporary	1	LS	\$1,200.00	\$1,200.00	\$500.00	\$500.00	\$200.00	\$200.00	\$500.00	\$500.00				
Site Clearing & Restoration	1	LS	\$20,000.00	\$20,000.00	\$13,000.00	\$13,000.00	\$2,000.00	\$2,000.00	\$1,000.00	\$1,000.00				
SUBTOTAL SANITARY SEWER IMPROVEMENTS			\$113,073.00		\$80,972.00		\$101,113.50		\$90,572.46					
SS IMPROVEMENTS PART "C"														
Pipe, SS 8"	3,373	LF	\$48.00	\$161,904.00	\$31.00	\$104,563.00	\$47.00	\$158,531.00	\$50.00	\$168,650.00				
MH, Standard SS (4')	20	EA	\$4,600.00	\$92,000.00	\$3,700.00	\$74,000.00	\$4,200.00	\$84,000.00	\$4,750.00	\$95,000.00				
Riser Assembly 4" Manhole Stub	17	EA	\$800.00	\$13,600.00	\$600.00	\$10,200.00	\$650.00	\$11,050.00	\$950.00	\$16,150.00				
Riser Assembly 4", Vertical	63	EA	\$1,250.00	\$78,750.00	\$950.00	\$59,850.00	\$1,200.00	\$75,600.00	\$1,250.00	\$78,750.00				
Fill, Flowable	106	LF	\$100.00	\$10,600.00	\$80.00	\$8,480.00	\$97.00	\$10,282.00	\$65.00	\$6,890.00				
Fill, Sand (Flushed & Vibrated)	1,246	LF	\$15.00	\$18,690.00	\$28.00	\$34,888.00	\$23.00	\$28,658.00	\$25.00	\$31,150.00				
Air Testing, SS Pipe	3,373	LF	\$1.00	\$3,373.00	\$2.00	\$6,746.00	\$1.50	\$5,059.50	\$2.33	\$7,859.09				
BMP, Silt Fence	3,215	LF	\$1.00	\$3,215.00	\$1.50	\$4,822.50	\$1.50	\$4,822.50	\$1.50	\$4,822.50				
Maintain Existing BMPs	1	LS	\$500.00	\$500.00	\$200.00	\$200.00	\$150.00	\$150.00	\$200.00	\$200.00				
Seeding	1	LS	\$3,000.00	\$3,000.00	\$4,400.00	\$4,400.00	\$4,440.00	\$4,440.00	\$4,440.00	\$4,440.00				
Seeding, Temporary	1	LS	\$1,000.00	\$1,000.00	\$1,000.00	\$1,000.00	\$150.00	\$150.00	\$1,000.00	\$1,000.00				
Site Clearing & Restoration	1	LS	\$14,000.00	\$14,000.00	\$9,000.00	\$9,000.00	\$3,000.00	\$3,000.00	\$1,000.00	\$1,000.00				
SUBTOTAL SANITARY SEWER IMPROVEMENTS			\$400,632.00		\$318,149.50		\$385,743.00		\$415,911.59					

WATER LINE IMPROVEMENTS PART "D"														
Pipe, WL 8"	2,918	LF	\$42.00	\$122,556.00	\$41.00	\$119,638.00	\$43.00	\$125,474.00	\$78.00	\$227,604.00				
Pipe, WL 8" (DICL)	30	LF	\$100.00	\$3,000.00	\$63.00	\$1,890.00	\$205.00	\$6,150.00	\$95.00	\$2,850.00				
Pipe, Casing (18" ID min.)	61	LF	\$100.00	\$6,100.00	\$273.00	\$16,653.00	\$495.00	\$30,195.00	\$435.00	\$26,535.00				
Pipe, Connect to Existing	1	EA	\$2,000.00	\$2,000.00	\$4,870.00	\$4,870.00	\$7,000.00	\$7,000.00	\$14,000.00	\$14,000.00				
Fire Hydrant Assembly	4	EA	\$5,000.00	\$20,000.00	\$5,298.00	\$21,192.00	\$4,300.00	\$17,200.00	\$5,000.00	\$20,000.00				
Valve Assembly, 8"	7	EA	\$2,000.00	\$14,000.00	\$1,976.00	\$13,832.00	\$2,100.00	\$14,700.00	\$2,200.00	\$15,400.00				
Valve Assembly, Blowoff	3	EA	\$1,300.00	\$3,900.00	\$2,475.00	\$7,425.00	\$1,500.00	\$4,500.00	\$1,500.00	\$4,500.00				
Service Line, Long 1"	28	EA	\$850.00	\$23,800.00	\$733.00	\$20,524.00	\$900.00	\$25,200.00	\$1,400.00	\$39,200.00				
Fill, Sand (Flushed & Vibrated)	267	LF	\$20.00	\$5,340.00	\$15.00	\$4,005.00	\$13.00	\$3,471.00	\$4.00	\$1,068.00				
Fill, Protective	592	LF	\$5.00	\$2,960.00	\$2.00	\$1,184.00	\$5.00	\$2,960.00	\$2.00	\$1,184.00				
Maintain Existing BMPs	1	LS	\$500.00	\$500.00	\$202.00	\$202.00	\$100.00	\$100.00	\$200.00	\$200.00				
Seeding	1	LS	\$1,500.00	\$1,500.00	\$1,100.00	\$1,100.00	\$400.00	\$400.00	\$1,100.00	\$1,100.00				
Seeding, Temporary	1	LS	\$500.00	\$500.00	\$850.00	\$850.00	\$200.00	\$200.00	\$850.00	\$850.00				
Site Clearing & Restoration	1	LS	\$6,000.00	\$6,000.00	\$6,000.00	\$6,000.00	\$2,000.00	\$2,000.00	\$1,000.00	\$1,000.00				
SUBTOTAL STORM WATER DRAIN IMPROVEMENTS			\$212,156.00		\$219,365.00		\$239,550.00		\$355,491.00					
STORM WATER DRAIN IMPROVEMENTS PART "E"														
Excavation	25,131	CY	\$2.50	\$62,827.50	\$3.00	\$75,393.00	\$2.30	\$57,801.30	\$2.30	\$57,801.30				
Excavation, Borrow (LVC)	10,000	CY	\$14.00	\$140,000.00	\$20.00	\$200,000.00	\$14.90	\$149,000.00	\$14.90	\$149,000.00				
Grading, Mass	1	LS	\$25,000.00	\$25,000.00	\$13,795.00	\$13,795.00	\$35,000.00	\$35,000.00	\$35,000.00	\$35,000.00				
Pipe, SWS 15"	544	LF	\$45.00	\$24,480.00	\$43.00	\$23,392.00	\$44.00	\$23,936.00	\$54.00	\$29,376.00				
Pipe, SWS 18"	255	LF	\$50.00	\$12,750.00	\$61.00	\$15,555.00	\$50.50	\$12,877.50	\$62.00	\$15,810.00				
Pipe, SWS 24"	136	LF	\$65.00	\$8,840.00	\$85.00	\$11,560.00	\$62.00	\$8,432.00	\$72.00	\$9,792.00				
Pipe, End Section 15"	2	EA	\$1,600.00	\$3,200.00	\$1,800.00	\$3,600.00	\$800.00	\$1,600.00	\$4,200.00	\$8,400.00				
Pipe, End Section 24"	2	EA	\$2,000.00	\$4,000.00	\$2,000.00	\$4,000.00	\$950.00	\$1,900.00	\$4,300.00	\$8,600.00				
Inlet, Curb (Type 1) (L=10' W=3')	4	EA	\$6,000.00	\$24,000.00	\$5,300.00	\$21,200.00	\$5,400.00	\$21,600.00	\$5,800.00	\$23,200.00				
Backyard Inlet, 4' Dia.	3	EA	\$2,500.00	\$7,500.00	\$2,400.00	\$7,200.00	\$2,800.00	\$8,400.00	\$2,800.00	\$8,400.00				
Rip-Rap, Light Stone	252	SY	\$60.00	\$15,120.00	\$50.00	\$12,600.00	\$57.00	\$14,364.00	\$100.00	\$25,200.00				
Fill, Sand (Flushed & Vibrated)	38	LF	\$60.00	\$2,280.00	\$27.00	\$1,026.00	\$13.00	\$494.00	\$15.00	\$570.00				
BMP, Curb Inlet Protection	4	EA	\$125.00	\$500.00	\$120.00	\$480.00	\$120.00	\$480.00	\$120.00	\$480.00				
BMP, Drop Inlet Protection (Mulch Wattle)	3	EA	\$125.00	\$375.00	\$120.00	\$360.00	\$120.00	\$360.00	\$120.00	\$360.00				
BMP, Erosion Control Mat	2,088	SY	\$1.50	\$3,132.00	\$1.65	\$3,445.20	\$1.65	\$3,445.20	\$1.65	\$3,445.20				
BMP, Ditch Checks	7	EA	\$100.00	\$700.00	\$130.00	\$910.00	\$130.00	\$910.00	\$130.00	\$910.00				
Maintain Existing BMPs	1	LS	\$1,000.00	\$1,000.00	\$300.00	\$300.00	\$200.00	\$200.00	\$200.00	\$200.00				
Seeding, Temporary	1	LS	\$2,000.00	\$2,000.00	\$2,000.00	\$2,000.00	\$2,000.00	\$2,000.00	\$2,000.00	\$2,000.00				
Seeding	1	LS	\$10,000.00	\$10,000.00	\$5,772.00	\$5,772.00	\$5,772.00	\$5,772.00	\$5,772.00	\$5,772.00				
Site Clearing & Restoration	1	LS	\$16,000.00	\$16,000.00	\$8,500.00	\$8,500.00	\$8,950.00	\$8,950.00	\$10,000.00	\$10,000.00				
Testing	1	LS	\$5,000.00	\$5,000.00	\$9,000.00	\$9,000.00	\$8,800.00	\$8,800.00	\$8,800.00	\$8,800.00				
SUBTOTAL STORM WATER DRAIN IMPROVEMENTS			\$368,704.50		\$420,088.20		\$366,322.00		\$403,116.50					
TOTAL BASE BID			\$2,231,433.50		\$1,898,050.70		\$1,994,583.00		\$2,389,871.77					

