

CHAPEL LANDING 5TH

Re-plot of Part of Chapel Landing
Bel Aire, Sedgwick County, Kansas
Part of the N1/2 of Sec. 24, T26S, R1E

Phase 1 Sanitary Sewer Benefit District



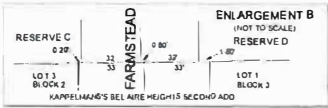
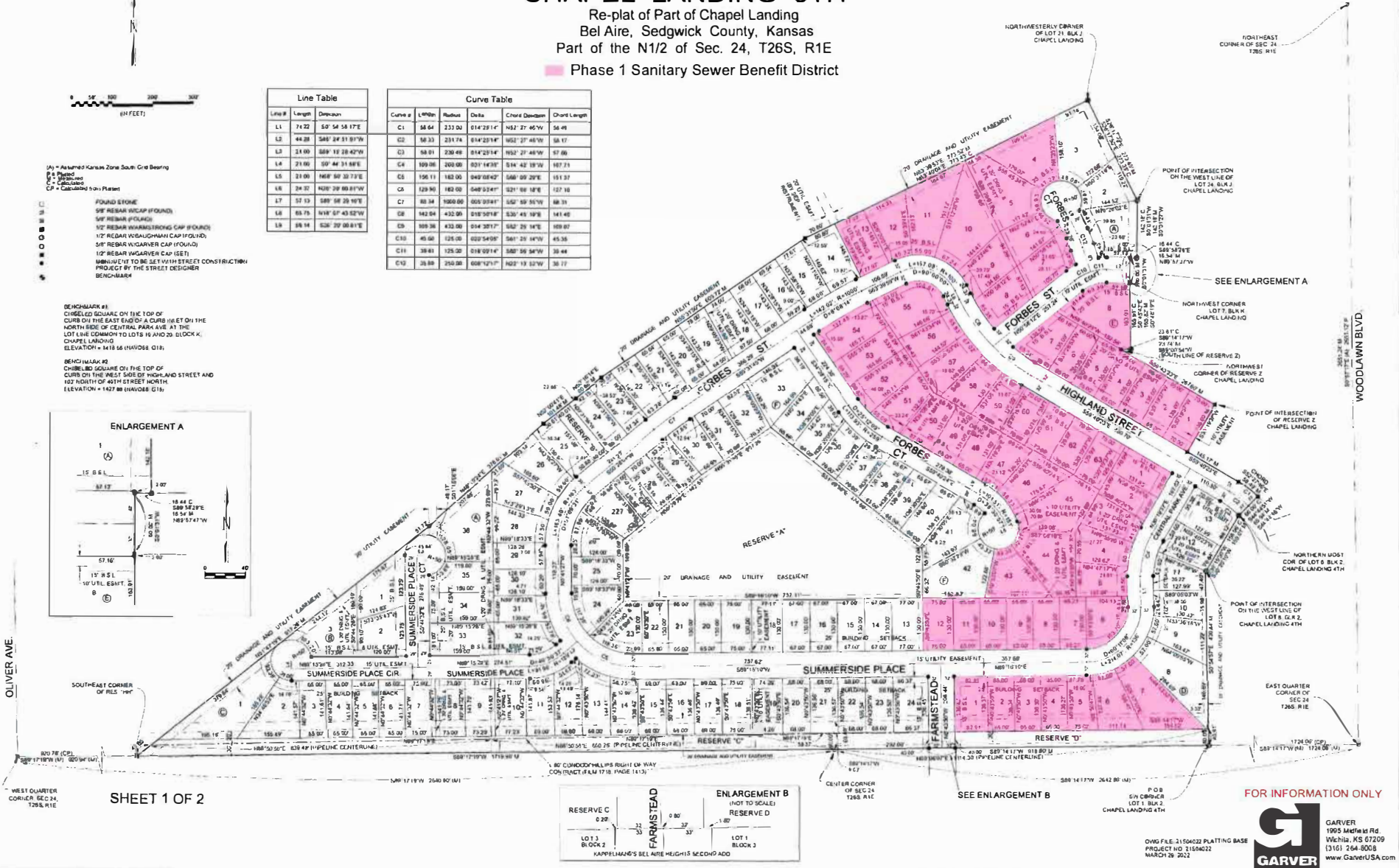
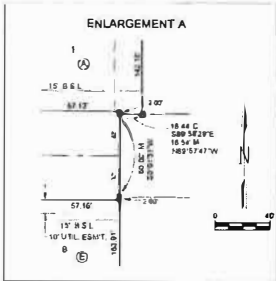
Line #	Length	Description
L1	74.22	S0° 54' 58.17"E
L2	44.28	S48° 24' 31.91"W
L3	24.00	S89° 12' 28.42"W
L4	21.00	S0° 44' 31.88"E
L5	21.00	N68° 59' 33.73"E
L6	24.37	N02° 29' 40.81"W
L7	57.13	S89° 58' 29.16"E
L8	63.75	S19° 07' 43.52"W
L9	58.94	S26° 30' 00.81"E

Curve #	L/100th	Radius	Delta	Chord Distance	Chord Length
C1	58.64	233.04	014°29'14"	N82°27'46"W	58.49
C2	58.33	231.74	014°29'14"	N82°27'46"W	58.17
C3	58.91	230.48	014°29'14"	N82°27'46"W	57.66
C4	109.08	460.00	031°14'37"	S14°42'48"W	107.71
C5	156.11	182.00	049°08'42"	S46°09'29"E	151.37
C6	129.90	182.00	049°08'42"	S21°59'38"E	127.10
C7	89.34	1060.00	003°03'41"	S2°59'30"W	89.70
C8	142.04	432.00	018°30'17"	S30°45'39"E	141.42
C9	109.38	432.00	014°30'17"	S42°29'14"E	109.87
C10	45.50	124.00	027°54'59"	S61°29'14"W	45.38
C11	38.81	125.00	018°09'14"	S67°58'34"W	38.44
C12	28.59	250.00	008°12'17"	N02°19'32"W	28.17

- (A) = Assumed Kansas Zone South-Cross Bearing
 - B = Plat
 - C = Calculated
 - D = Calculated from Plat
- FOUND STONE
 - 9" REBAR W/CAP (FOUND)
 - 5" REBAR (FOUND)
 - 1/2" REBAR W/GRANITE CAP (FOUND)
 - 1/2" REBAR W/SLABMAN CAP (FOUND)
 - 5" REBAR W/GRANITE CAP (FOUND)
 - 1/2" REBAR W/GRANITE CAP (SET)
 - DIMENSIONS TO BE SET WITH STREET CONSTRUCTION PROJECT BY THE STREET DESIGNER
 - BENCHMARK

BENCHMARK #1
CHISELED SQUARE ON THE TOP OF CURB ON THE EAST SIDE OF A CURB IN SET ON THE NORTH SIDE OF CENTRAL PARK AVE AT THE LOT LINE COMMON TO LOTS 18 AND 20, BLOCK K, CHAPEL LANDING.
ELEVATION = 1418.56 (HAYES 018)

BENCHMARK #2
CHISELED SQUARE ON THE TOP OF CURB ON THE WEST SIDE OF HIGHLAND STREET AND 102 NORTH OF 4TH STREET NORTH.
ELEVATION = 1427.86 (HAYES 018)



SHEET 1 OF 2

FOR INFORMATION ONLY

GARVER
1905 Michigan Ave.
Wichita, KS 67209
(316) 264-9008
www.GarverUSA.com

CHD FILE: 21-504022 PLATTING BASE
PROJECT NO: 21504022
MARCH 29, 2022