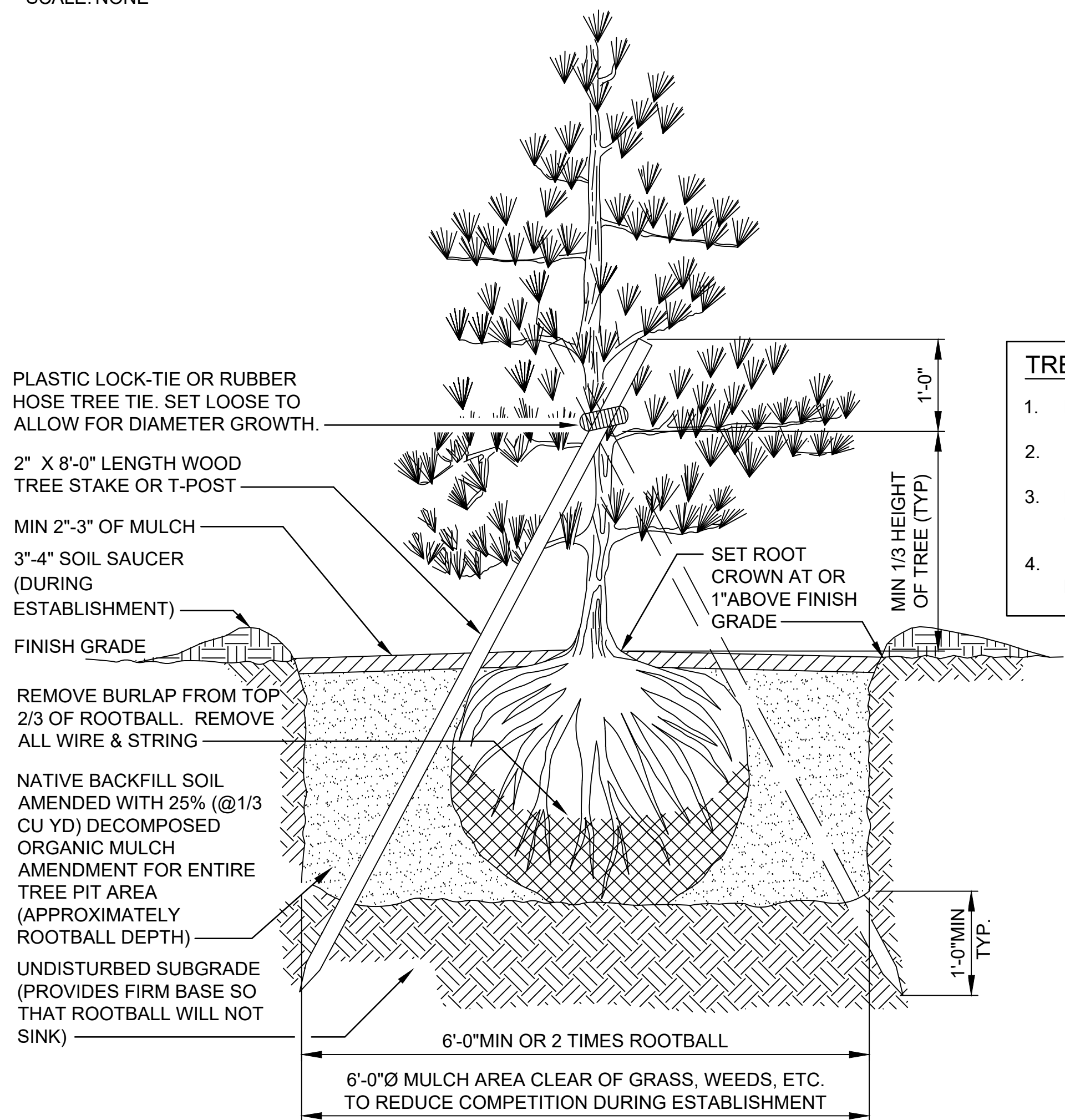


1 SHRUB PLANTING DETAIL
SCALE: NONE



2 EVERGREEN TREE PLANTING DETAIL
SCALE: NONE

- TREE INSTALLATION NOTES:**
1. INSTALLATION INCLUDES REMOVAL OF STAKES ONE YEAR AFTER INSTALLATION
 2. SHAPE SOIL SURFACE TO PROVIDE 3' DIAMETER WATERING RING
 3. BACKFILL TREE PIT IN 6" LIFTS, COMPACTING EACH LIFT TO REMOVE ANY AIR POCKETS.
 4. AFTER BACKFILLING, REMOVE REMAINING DIRT AND DEBRIS FROM SITE.

"CHAINLOCK" OR EQUAL TREE TIE MATERIAL (1" WIDTH) TIE OFF TREE TIE MATERIAL TO WOOD TREE STAKE OR METAL T-POST TO HOLD VERTICALLY. LOOP EACH TIE AROUND HALF TREE LOOSELY TO PROVIDE 1" SLACK FOR TRUNK GROWTH

3" MULCH DEPTH (TAPERED AT TRUNK)

MULCH TREE PIT MIN 5'-0" LENGTH X FULL PLANTING STRIP WIDTH BETWEEN CURB AND SIDEWALK (FOR PLANTING STRIPS LESS THAN 6'-0" WIDE.) PROVIDE 5'-0" Ø MULCH RING FOR PLANTING STRIPS WIDER THAN 6'-0"

SIDEWALK

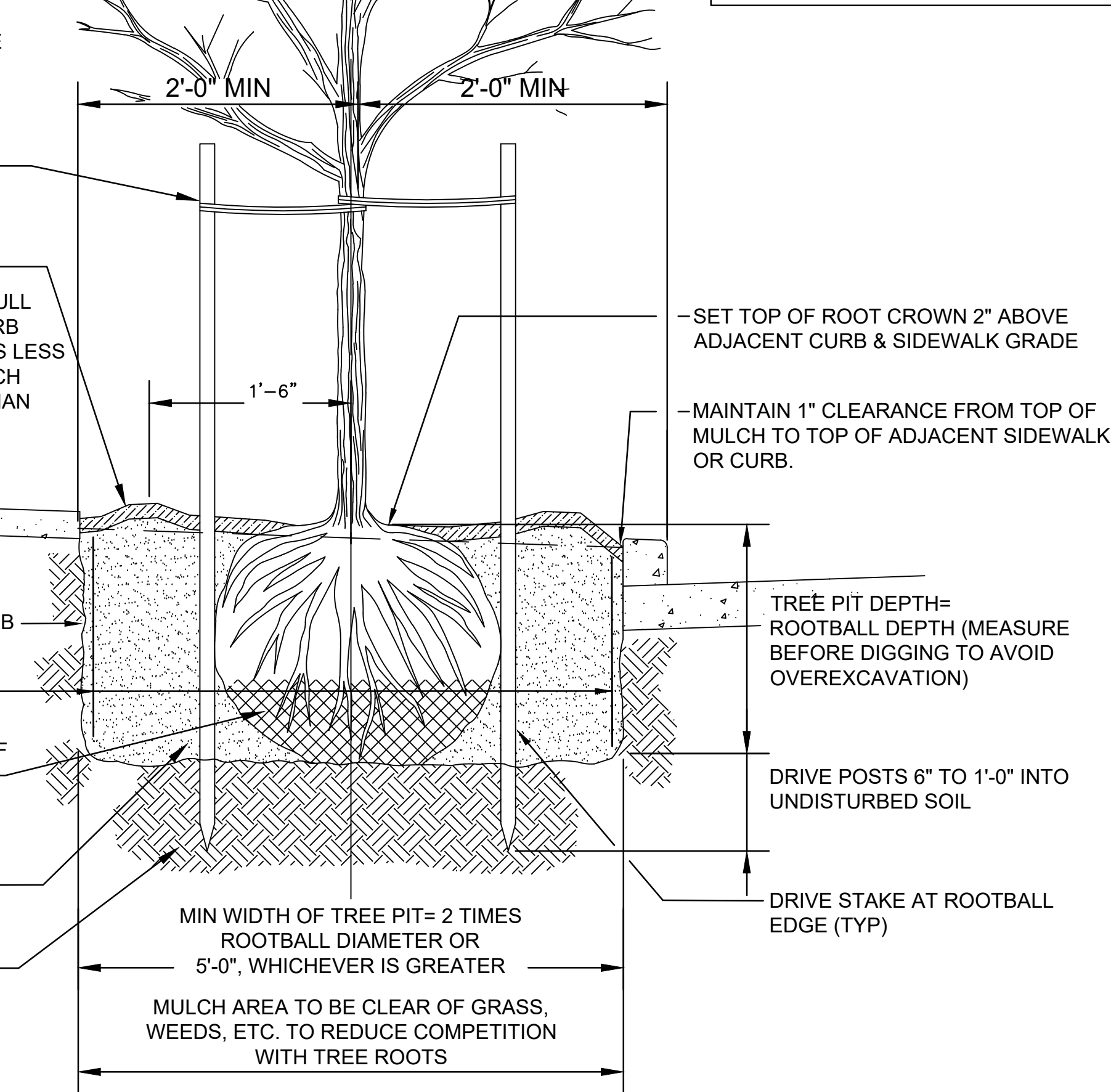
ROUGHEN SIDES OF PLANTING HOLE MAXIMIZE EXCAVATED AREA WITHOUT UNDERMINING ADJACENT PAVING/CURB

18" DEEP ROOT BARRIER (TYP. WITHIN 10' OF PAVING

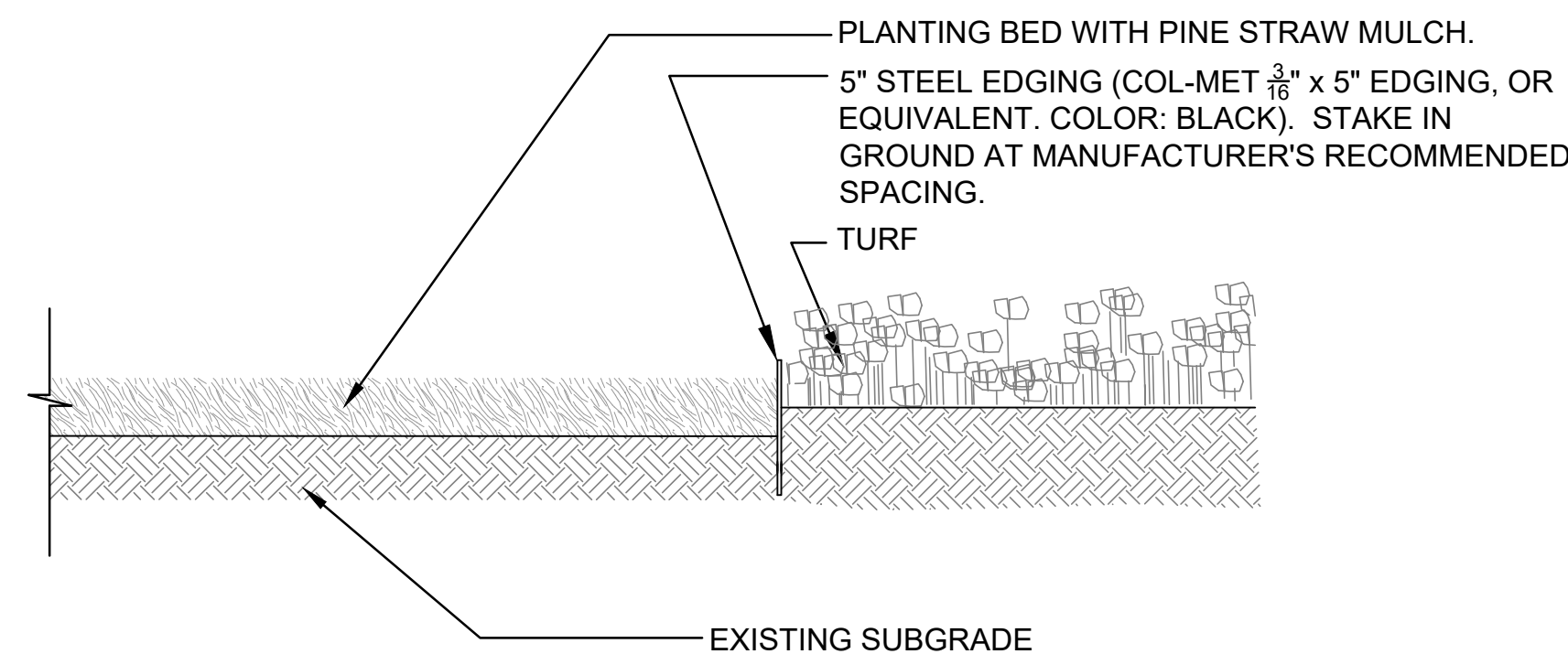
REMOVE ALL WIRE & STRING, AND REMOVE ALL BURLAP FROM TOP 2/3 OF ROOTBALL

NATIVE BACKFILL SOIL AMENDMENT WITH 25% DECOMPOSED ORGANIC MULCH AMENDMENT FOR ENTIRE TREE PIT AREA X ROOTBALL DEPTH

UNDISTURBED SUBGRADE (PROVIDES FIRM BASE SO THAT ROOTBALL WILL NOT SINK)



3 DECIDUOUS TREE PLANTING DETAIL
SCALE: NONE



4 LANDSCAPE EDGING
SCALE: NONE

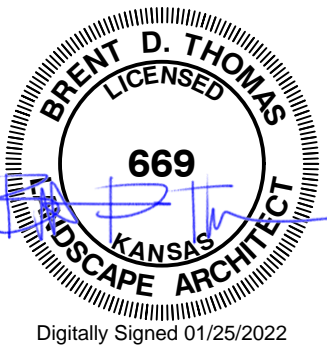
TREE INSTALLATION NOTES:

1. INSTALLATION INCLUDES REMOVAL OF STAKES ONE YEAR AFTER INSTALLATION
2. SHAPE SOIL SURFACE TO PROVIDE 3' DIAMETER WATERING RING
3. BACKFILL TREE PIT IN 6" LIFTS, COMPACTING EACH LIFT TO REMOVE ANY AIR POCKETS.
4. AFTER BACKFILLING, REMOVE REMAINING DIRT AND DEBRIS FROM SITE.



© 2018 GARVER, LLC
THIS DOCUMENT, ALONG WITH THE IDEAS AND DESIGNS CONVEYED HEREIN, SHALL BE CONSIDERED INSTRUMENTS OF PROFESSIONAL SERVICE AND ARE PROPERTY OF GARVER, LLC. ANY USE, REPRODUCTION, OR DISTRIBUTION OF THIS DOCUMENT, ALONG WITH THE IDEAS AND DESIGN CONTAINED HEREIN, IS PROHIBITED UNLESS AUTHORIZED IN WRITING BY GARVER, LLC OR EXPLICITLY ALLOWED IN THE GOVERNING PROFESSIONAL SERVICES AGREEMENT FOR THIS WORK.

1995 Midfield Road
Wichita, Kansas 67209



Digitally Signed 01/25/2022

BY				
DESCRIPTION				
DATE				
REV.				

CITY OF BEL AIRE
KANSAS

SKY VIEW AT BLOCK 49
3RD ADDITION
DRAINAGE PLAN

LANDSCAPE DETAILS

JOB NO.: 21S04030
DATE: NOV 2021
DESIGNED BY: BIG
DRAWN BY: BIG

BAR IS ONE INCH ON ORIGINAL DRAWING
0 1"
IF NOT ONE INCH ON THIS SHEET, ADJUST SCALES ACCORDINGLY.

DRAWING NUMBER

L-102

SHEET
NUMBER

GENERAL PLANTING NOTES

1. PRIOR TO BEGINNING ANY WORK ON THE SITE, THE CONTRACTOR SHALL CONTACT THE LANDSCAPE ARCHITECT TO ADDRESS ANY QUESTIONS.
2. LANDSCAPE CONTRACTOR SHALL PROVIDE LABOR, MATERIALS AND SERVICE NECESSARY TO FURNISH AND INSTALL MATERIALS AS SPECIFIED HEREIN AND SHOWN ON THE PLANS.
3. ALL PLANT MATERIAL SELECTIONS WILL BE REVIEWED AND APPROVED BY OWNERS' REPRESENTATIVES PRIOR TO PURCHASE AND INSTALLATION.
4. NO MATERIAL SUBSTITUTIONS SHALL BE MADE WITHOUT LANDSCAPE ARCHITECT'S WRITTEN APPROVAL. ALTERNATE MATERIALS OF SIMILAR SIZE AND CHARACTER MAY BE CONSIDERED IF SPECIFIED PLANT MATERIALS CANNOT BE OBTAINED. LANDSCAPE ARCHITECT RESERVES THE RIGHT TO REVISE THE PLANT LIST AS DEEMED NECESSARY.
5. QUANTITIES OF PLANT MATERIALS SHOWN ON THE PLAN TAKE PRECEDENCE OVER THE QUANTITIES SHOWN ON THE PLANT SCHEDULE. LANDSCAPE CONTRACTOR SHALL BE RESPONSIBLE FOR VERIFYING ALL QUANTITIES ON THE PLANTING PLAN.
6. REPORT DISCREPANCIES IN THE PLANTING PLAN TO THE LANDSCAPE ARCHITECT PRIOR TO PURCHASING MATERIALS OR COMMENCING CONSTRUCTION.
7. REVIEW THE LANDSCAPE SPECIFICATION SECTION LOCATED IN THE PROJECT MANUAL FOR ADDITIONAL PROJECT RESPONSIBILITIES AND INSTRUCTIONS.

SITE PREPARATION AND EARTHWORK

8. TOPSOIL HAULED TO THE SITE SHALL BE FERTILE, FRIABLE, NATURAL LOAM SOIL OF UNIFORM QUALITY CHARACTERISTIC OF REPRESENTATIVE LOCAL SOILS WHICH PRODUCE HEAVY GROWTH OF CROP GRASSES, OR OTHER VEGETATION. SOIL SHALL BE FREE OF SUBSOIL, CLAY LUMPS, BRUSH WEEDS ROOTS, STONES, TRASH, OR ANY OTHER DELETERIOUS MATERIALS.
9. TOPSOIL SHALL BE DELIVERED IN AN UNFROZEN AND NON-MUDDY CONDITION AND SHALL BE SUBJECT TO APPROVAL OF THE LANDSCAPE ARCHITECT. SOLUBLE SALTS SHALL NOT EXCEED 500 ppm AND ORGANIC MATTER SHALL BE NO LESS THAN 1.5% BY WEIGHT. pH SHALL RANGE BETWEEN 6.0 AND 7.5.
10. LANDSCAPE CONTRACTOR SHALL HAVE TOPSOIL TESTED BY A CERTIFIED TESTING LABORATORY AND OBTAIN RECOMMENDATIONS FOR SOIL AMENDMENT TYPE(S) AND QUANTITIES. SUBMIT A COPY OF THIS REPORT TO THE LANDSCAPE ARCHITECT FOR THEIR RECORDS. RECOMMENDATIONS SHALL BE SPECIFIC TO THE TOPSOIL USED AND THE PLANT MATERIALS SPECIFIED IN THE PLANS. A SAMPLE OF THE TOPSOIL TO BE USED SHALL BE SUBMITTED TO THE LANDSCAPE ARCHITECT FOR APPROVAL PRIOR TO INSTALLATION.

PLANTING PREPARATION

12. BACKFILL: FOR PLANT EXCAVATIONS, BACKFILL SHALL BE CLEAN, NATURAL TOPSOIL, MIXED WITH AMENDMENTS AT THE RATIOS SPECIFIED BY A CERTIFIED TOPSOIL ANALYSIS.

PLANTING MATERIALS

13. PLANT MATERIALS SHALL BE WELL FORMED AND DEVELOPED IN GOOD CONDITIONS, HEALTHY AND DISEASE-FREE, AND BE TYPICAL OF THE SPECIES. PLANTS SHALL COMPLY IN ALL APPLICABLE RESPECTS WITH ACCEPTABLE STANDARDS AS SET FORTH IN THE AMERICAN ASSOCIATION OF NURSERYMAN'S "AMERICAN STANDARD OF NURSERY STOCK". HEIGHT OF PLANT MATERIALS SHALL BE MEASURED FROM EXISTING SOIL LINE AT TOP OF ROOTBALL TO TOP OF CROWN.
14. PLANT MATERIALS SHALL BE PROTECTED BY THE DRYING ACTION OF THE SUN AND WIND AFTER BEING DUG, WHILE BEING TRANSPORTED, AND WHILE AWAITING PLANTING. BALLS OF PLANTS WHICH CANNOT BE PLANTED

- IMMEDIATELY SHALL BE PROTECTED FROM DRYING ACTION BY COVERING THEM WITH MOIST MULCH. PERIODICALLY, APPLY WATER TO MULCH-COVERED ROOT BALLS TO KEEP MOIST. IF PLANTING SHOULD OCCUR DURING GROWING SEASON, APPLY ANTI-DESSICANT BEFORE TRANSPORT TO REDUCE THE LIKELIHOOD OF WIND BURN. REAPPLY ANTI-DESSICANT AFTER PLANTING TO REDUCE TRANSPIRATION.
15. PLANTS DESIGNATED "CONTAINER GROWN" SHALL HAVE BEEN GROWN IN POTS, CANS OR BOXES FOR A MINIMUM OF SIX MONTHS AND A MAXIMUM OF TWO YEARS. THESE PLANTS SHALL BE REMOVED FROM CONTAINERS BEFORE PLANTING. PLANTS THAT APPEAR ROOT-BOUND SHALL BE REJECTED.
16. PLANT LOCATIONS ARE APPROXIMATE. ADJUST AS NECESSARY TO AVOID CONFLICTS.
17. PLANT SUBSTITUTIONS WILL ONLY BE ALLOWED UNDER THE FOLLOWING CIRCUMSTANCES: LANDSCAPE CONTRACTOR SHALL SUBMIT A WRITTEN SUBSTITUTION REQUEST TO THE LANDSCAPE ARCHITECT STATING WHAT PLANTS TO BE SUBSTITUTED AND THE REQUESTED SUBSTITUTION PLANT ALONG WITH EXPLANATION OF SUBSTITUTION REQUEST. NO SUBSTITUTION SHALL CONSTITUTE AN INCREASE IN THE COST FROM THE ORIGINAL CONTRACT AMOUNT. ANY PLANT SUBSTITUTIONS MADE WITHOUT APPROVAL SHALL BE REPLACED BY THE LANDSCAPE CONTRACTOR AT THE TIME OF INSPECTION AT NO COST TO THE PROJECT.
18. PLANTING BEDS RECEIVING MULCH SHALL BE FREE OF WEEDS, GRASS AND DEBRIS. TREAT BEDS WITH A PRE-EMERGENT WITH TREFLAN, SUCH AS PREEN, PRIOR TO PLANTING AND MULCH PLACEMENT. A SECOND APPLICATION SHOULD BE APPLIED IF WEEDS EMERGE PRIOR TO COMPLETION OF WORK. APPLY IN ACCORDANCE WITH STANDARD TRADE PRACTICE AND MANUFACTURER'S PRODUCT LABELING.

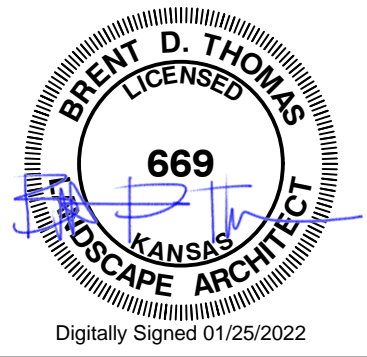
MAINTENANCE AND CLEAN-UP

19. PROVIDE TEMPORARY WATER FOR PLANT MATERIALS DURING THE ESTABLISHMENT PERIOD.
20. REMOVE ALL RUBBISH, EQUIPMENT, AND MATERIAL AND LEAVE THE AREA IN A NEAT, CLEAN CONDITION EACH DAY. MAINTAIN PAVED AREAS UTILIZED FOR HAULING EQUIPMENT AND MATERIALS BY OTHER TRADES IN A CLEAN AND UNOBSTRUCTED CONDITION AT ALL TIMES.
21. REMOVE SOIL OR DIRT THAT HAS ACCUMULATED ON PAVED SURFACES DURING OR AS A RESULT OF PLANTING OPERATIONS EACH DAY.
22. FERTILIZE ALL PLANTS WITH A 10-20-10 COMMERCIAL, SLOW-RELEASE FERTILIZER AS DIRECTED BY INSTRUCTIONS ON PRODUCT LABEL.
23. LIMIT AMOUNT OF PRUNING TO A MINIMUM NECESSARY TO REMOVE DEAD OR INJURED TWIGS AND BRANCHES. PRUNE IN SUCH A MANNER AS NOT TO CHANGE NATURAL HABIT OR SHAPE OF PLANT. MAKE CUTS FLUSH, LEAVING NO STUBS. CENTRAL LEADERS SHALL NOT BE REMOVED.
24. LANDSCAPE CONTRACTOR TO REMOVE ALL DEAD WOOD ON TREES AND SHRUBS ONE YEAR AFTER PROVISIONAL ACCEPTANCE.
25. CONTRACTOR IS RESPONSIBLE TO MOW ALL SEEDED AND SODDED AREAS A MINIMUM OF TWO (2) TIMES AT A HEIGHT OF NO MORE THAN 1-1/2" PRIOR TO TURNING OVER TO THE CITY.



© 2018 GARVER, LLC
THIS DOCUMENT, ALONG WITH THE IDEAS AND DESIGNS CONVEYED HEREIN, SHALL BE CONSIDERED INSTRUMENTS OF PROFESSIONAL SERVICE AND ARE PROPERTY OF GARVER, LLC. ANY USE, REPRODUCTION, OR DISTRIBUTION OF THIS DOCUMENT, ALONG WITH THE IDEAS AND DESIGN CONTAINED HEREIN, IS PROHIBITED UNLESS AUTHORIZED IN WRITING BY GARVER, LLC OR EXPLICITLY ALLOWED IN THE GOVERNING PROFESSIONAL SERVICES AGREEMENT FOR THIS WORK.

1995 Midfield Road
Wichita, Kansas 67209



REV.	DATE	DESCRIPTION	BY

CITY OF BEL AIRE
KANSAS

SKY VIEW AT BLOCK 49
3RD ADDITION
DRAINAGE PLAN

LANDSCAPE NOTES

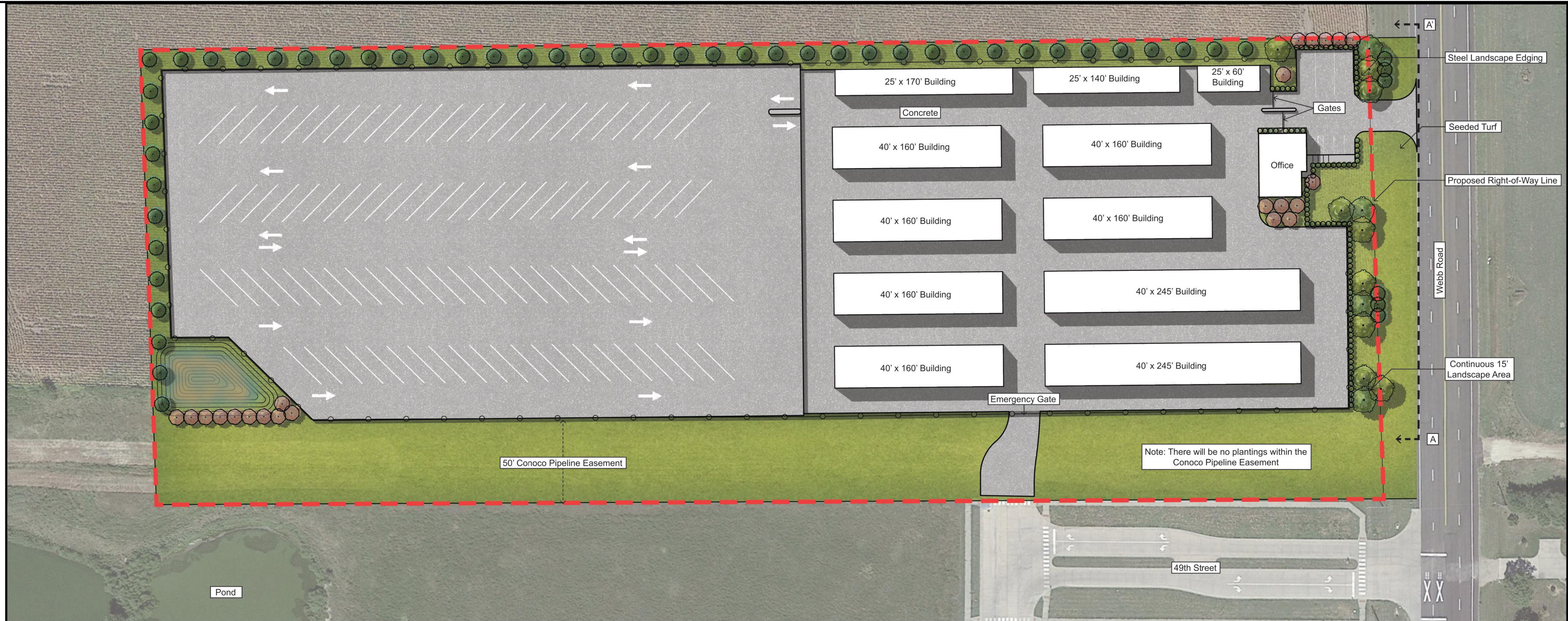
JOB NO.: 21S04030
DATE: NOV 2021
DESIGNED BY: BIG
DRAWN BY: BIG

BAR IS ONE INCH ON ORIGINAL DRAWING
0 1"
IF NOT ONE INCH ON THIS SHEET, ADJUST SCALES ACCORDINGLY.

DRAWING NUMBER

L-103

SHEET
NUMBER



© 2018 GARVER, LLC
THIS DOCUMENT, ALONG WITH THE IDEAS AND DESIGNS CONVEYED HEREIN, SHALL BE CONSIDERED INSTRUMENTS OF PROFESSIONAL SERVICE AND ARE PROPERTY OF GARVER, LLC. ANY USE, REPRODUCTION, OR DISTRIBUTION OF THIS DOCUMENT, ALONG WITH THE IDEAS AND DESIGN CONTAINED HEREIN, IS PROHIBITED UNLESS AUTHORIZED IN WRITING BY GARVER, LLC OR EXPLICITLY ALLOWED IN THE GOVERNING PROFESSIONAL SERVICES AGREEMENT FOR THIS WORK.

1995 Midfield Road
Wichita, Kansas 67209

Digitally Signed 01/25/2022

BY				
DESCRIPTION				
DATE				
REV.				

CITY OF BELAIRE
KANSAS

SKY VIEW AT BLOCK 49
3RD ADDITION
DRAINAGE PLAN

LANDSCAPE MASTER
PLAN AND SECTION

JOB NO.: 21S04030
DATE: NOV 2021
DESIGNED BY: BIG
DRAWN BY: BIG

BAR IS ONE INCH ON
ORIGINAL DRAWING
0 15' 30' 45'
IF NOT ONE INCH ON THIS SHEET,
ADJUST SCALES ACCORDINGLY.

DRAWING NUMBER
L-104

SHEET
NUMBER

1 WEBB STREET LANDSCAPE PLAN
SCALE: 1" = 50'

CITY OF BELAIRE LANDSCAPE REQUIREMENTS	
Property Location:	Webb Road
Current Zoning:	LC- Limited Commercial
Parcel Size:	541,938 S.F. (12.44 ACRES)
Street Frontage:	442 L.F. (Webb Road) 400 L.F. (49th Street)

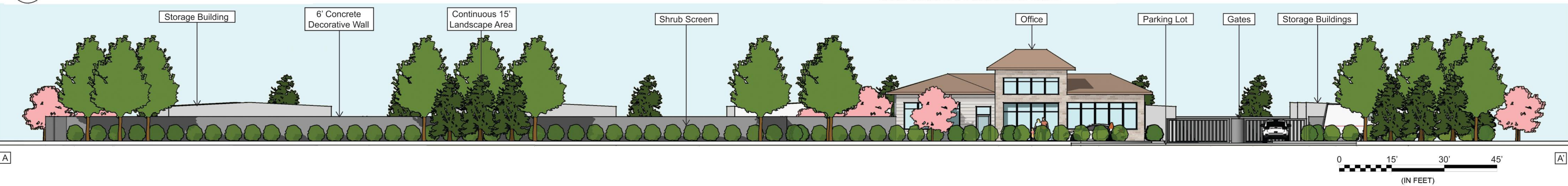
ITEM	REQUIRED	PROVIDED
Continuous Landscape Screening	15' Buffer	15' Buffer
Trees required for street frontage (1 tree per 50L.F.):	9 Trees (Webb) 8 Trees (49th)	24 Trees 0 (Easement)
Parking Lot Screen:	(100% of parking)	Shrub Screen (103 Shrubs)
Rear/Interior Side Yard Buffer: (Between Residential and Non-Residential)	8' Fence/Berm	6' Concrete Decorative Wall
North Property Line (1087' / 30= 36.2) West Property Line (337' / 30= 11.2) (1 Tree per 30 L.F.)	37 Trees 12 Trees	37 Trees 12 Trees

CONCEPT PLANT SCHEDULE

- 2-1/2" DECIDUOUS TREES 13
URBANITE ASH
CADDY MAPLE
SWAMP WHITE OAK
BALD CYPRESS
- 1-1/2" ORNAMENTAL TREES 22
AMERICAN SMOKE TREE
FOREST PANSY REDBUD
- 6" - 8" EVERGREEN TREES 53
SPARTAN JUNIPER
LOBLOLLY PINE
BLACK HILLS SPRUCE
- SHRUBS (3 GAL.) 103
COMPACT BURNING BUSH
KALLAY'S COMPACT PFITZER JUNIPER
PINK KNOCKOUT ROSE
KARL FOERSTER'S FEATHER REED GRASS



2 WEBB STREET SECTION AA'
SCALE: 1" = 15'



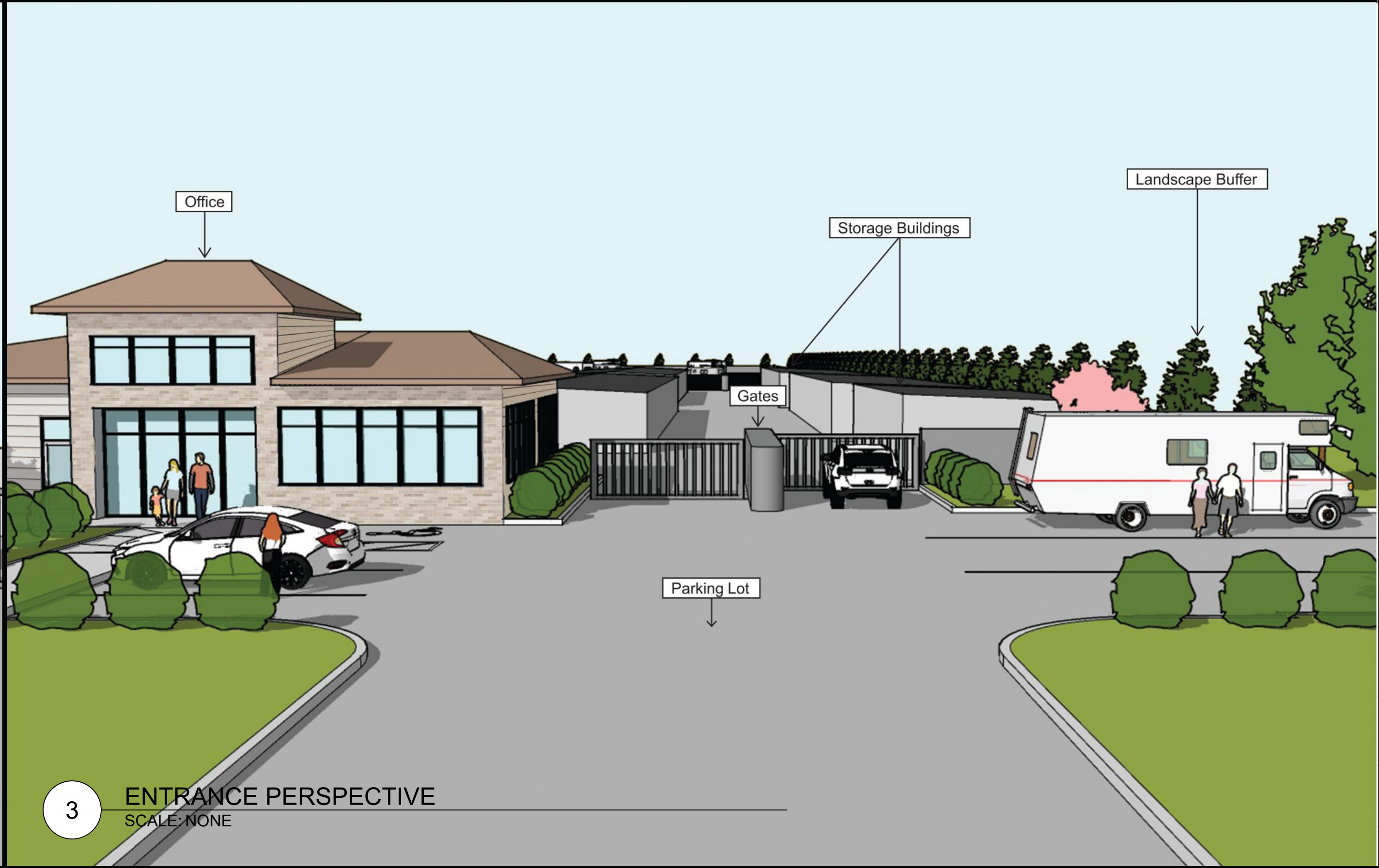


1 BIRD'S EYE VIEW
SCALE: NONE


Note: There will be no plantings within the Conoco Pipeline Easement



2 OFFICE PERSPECTIVE
SCALE: NONE

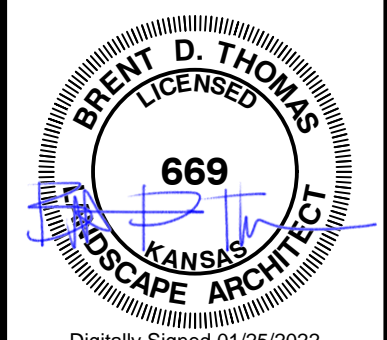


3 ENTRANCE PERSPECTIVE
SCALE: NONE



© 2018 GARVER, LLC
THIS DOCUMENT, ALONG WITH THE IDEAS AND DESIGNS CONVEYED HEREIN, SHALL BE CONSIDERED INSTRUMENTS OF PROFESSIONAL SERVICE AND ARE PROPERTY OF GARVER, LLC. ANY USE, REPRODUCTION, OR DISTRIBUTION OF THIS DOCUMENT, ALONG WITH THE IDEAS AND DESIGN CONTAINED HEREIN, IS PROHIBITED UNLESS AUTHORIZED IN WRITING BY GARVER, LLC OR EXPLICITLY ALLOWED IN THE GOVERNING PROFESSIONAL SERVICES AGREEMENT FOR THIS WORK.

1995 Midfield Road
Wichita, Kansas 67209



Digitally Signed 01/25/2022

BY	DESCRIPTION	DATE	REV.

CITY OF BEL AIRE
KANSAS

SKY VIEW AT BLOCK 49
3RD ADDITION
DRAINAGE PLAN

LANDSCAPE GRAPHICS

JOB NO.: 21S04030
DATE: NOV 2021
DESIGNED BY: BIG
DRAWN BY: BIG

BAR IS ONE INCH ON ORIGINAL DRAWING
IF NOT ONE INCH ON THIS SHEET, ADJUST SCALES ACCORDINGLY.

DRAWING NUMBER
L-105

SHEET NUMBER