

STAFF REPORT

DATE: June 30, 2021
TO: Ty Lasher, City Manager
FROM: Anne Stephens, Public Works Director
RE: Woodlawn – 37th to 45th Utility Relocation Project, Change Order 2

Proposal Focus:

Our Mission

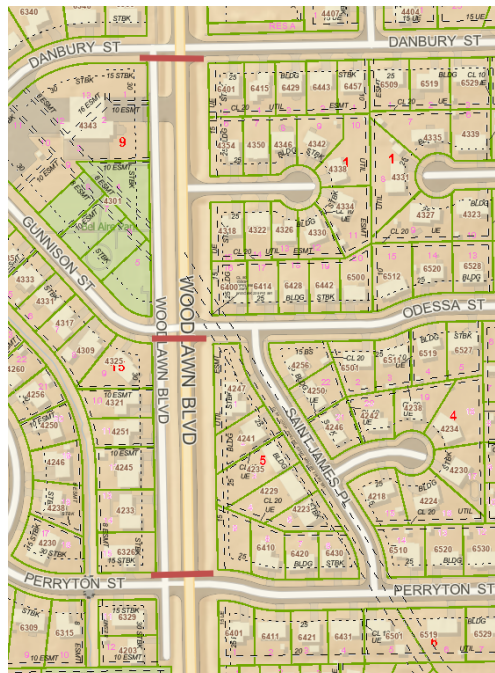
- Attractive growth and safe living – Encourage attractive neighborhoods and new developments.

Our Values

- Working Together – Departments working together as one team. Staff working with residents, HOA's and neighborhoods. Citizens working with each other.

Current Situation:

Water lines 2 – 4 were originally planned on being directional drilled (i.e. bored) under Woodlawn. After evaluation of site conditions with respect to existing utilities, the narrow corridor of public land to utilize and the ground water conditions, the ability to bore the water lines underneath Woodlawn was determined to have an unacceptable level of risk associated with it. After consulting with the construction team, including the design engineer, construction engineer and contractor, City Staff directed the contractor to prepare a change order for closing Woodlawn and installing the three water line crossing via the open cut method.



Goals:

- To maintain the City in a safe manner that is consistent with City standards.

Discussion:

Change Order No. 2 includes \$63,750.10 in deducts of quantities used for the directional drilling that will no longer be utilized, it includes an additional \$92,825.00 for items related to open cutting the pipes across Woodlawn (removal of existing pavement, trenching, shoring, flushed and vibrated sand backfill, connection to existing water lines, removal of the existing water line and temporary asphalt pavement). Traffic control is being provided for the complete closure of Woodlawn and the installation of detours around the work site for \$23,250.00. This equates to a net additional cost of \$52,324.90. The Contractor is also asking for an additional 30 working days to complete this work as the installation method of open cutting takes considerably longer than directional drilling.

Dondlinger is planning on performing this work in two phases. The first phase is the installation of waterlines 2 and 3 (Perryton and Odessa). The second phase is the installation of waterline 4 at Danbury. Splitting this work into two phases allows access at all times to Woodlawn Court, which is in the middle of the work. The proposed traffic control plans are included as an attachment to the change order.

There was discussion about deleting this work from the contract and adding it into the KDOT project, but we did not want to make any changes to the KDOT project at this point as we did not want to jeopardize the current bid date of September 22nd.

Financials:

All of the work considered in this change order directly benefits the City of Bel Aire and is being performed on Bel Aire owned infrastructure. The additional costs associated with this change order will be included in the contract costs for the Woodlawn Utility Relocations and will be paid for with temporary note proceeds. After three years, the temporary note will be refinanced with a GO Bond and the City's Utility Funds will pay annual debt service payments over the next 20 years.

Recommendation:

Staff recommends that the City Council accept Change Order No. 2 for \$52,324.90 and grant Dondlinger an additional 30 working days to complete this work.



8535 East 21st Street North
Suite 130
Wichita, KS 67206
TEL 316.264.8008
www.GarverUSA.com

Construction Contract Change Order

Project: Water & Sanitary Sewer Improvements for Woodlawn Ave. Reconstruction (37th to 45th) Woodlawn Ave. - 37th to 45th Garver Job No. 19C07000	Change Order No. 2
Owner: City of Bel Aire 7651 E. Central Park Ave. Bel Aire, KS	Date Prepared: June 29, 2021 Prepared by: Dakota Zimmerman
Contractor: Dondlinger Construction 2656 S. Sheridan St Ave. Wichita, KS 67217	

Description of Work Included in Contract
Relocating existing utilities to accommodate the reconstruction of Woodlawn Avenue.

Changes and Reasons Ordered (List Individual Changes as: A, B, C, D, etc.)

- Water Lines 2-4. These lines were originally planned to be bored under Woodlawn. After evaluation on site with the existing utilities, narrow corridor, and groundwater the boring was deemed to be un-constructable without damaging the existing utilities. Direction was given to open-cut these water lines across Woodlawn. The items below outline the deducts & additions to complete this additional work.
- A. Traffic Control for the closure of Woodlawn per the phasing plan show. This also includes two message boards to notify the public.
- C. Message Boards for public notification.
- D. We will utilize the current contract line item (Bel Aire Water #22) to place asphalt back after the water lines are installed. This is a place holder as these additional quantities will make this line item overrun the original contract quantity.

Attachments: Dondlinger CO #02 / Dondlinger Phasing Plan

Contract Changes	Bid Item No.	Bid Item Description	Unit of Measure	Original Contract Quantity	Contract Unit Price	Revised Contract Quantity	Revised Unit Price	Original Contract Cost	Revised Contract Cost
A.	1	Pipe, WL 8" DI CL	LF	77.0	\$75.00	71.5	\$75.00	\$5,775.00	\$5,362.50
A.	2	Pipe, WL 8"	LF	2052.0	\$61.00	1686.2	\$61.00	\$125,172.00	\$102,858.20
A.	13	Connect to Existing Pipe	EA	19.0	\$1,900.00	13.0	\$1,900.00	\$36,100.00	\$24,700.00
A.	16	Street Crossing by Directional Drilling 8"	LF	430.0	\$120.00	201.7	\$120.00	\$51,600.00	\$24,204.00
A.	21	Pipe Abandoned in Place	LF	2129.0	\$6.00	1757.7	\$6.00	\$12,774.00	\$10,546.20
A.	CO #02A	Open Cut Pipe, WL 8" & Remove Existing	LF	0.0	\$0.00	371.3	\$250.00	\$0.00	\$92,825.00
B.	CO #02B	Traffic Control for Woodlawn Closure	LS	0	\$0.00	1	\$18,750.00	\$0.00	\$18,750.00
C.	CO #02C	Message Boards	EADA	0	\$0.00	45	\$100.00	\$0.00	\$4,500.00
								\$0.00	\$0.00
								\$0.00	\$0.00
								\$0.00	\$0.00
								\$0.00	\$0.00
								\$0.00	\$0.00
								\$0.00	\$0.00
								\$0.00	\$0.00


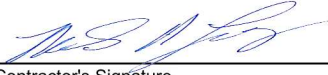
Summation of Cost \$231,421.00

\$283,745.90

Net Cost for this Change Order \$52,324.90

Estimated Project Cost		Time Change	
Estimated Project Cost		Contract Start Date	
Original Contract Amount	\$751,593.00	Original Contract Time (calendar days)	March 1, 2021
Previously Approved Changes	\$80,461.00	Previously Approved Changes (calendar days)	75
This Change Order	\$52,324.90	Additional Contract Time This Change Order (calendar days)	15
New Contract Amount	\$884,378.90	Suspended Time (calendar days)	30
		New Construction Completion Date	

THIS AGREEMENT IS SUBJECT TO ALL ORIGINAL CONTRACT PROVISIONS AND PREVIOUS CHANGE ORDERS

ISSUED FOR REASONS INDICATED ABOVE Engineer: Garver	 Digitally signed by Dakota G. Zimmerman Date: 2021.06.30 12:54:51-05'00'	Project Manager 6/30/21
ACCEPTED BY CONTRACTOR	 Contractor's Signature	Project Manager 6/30/21
APPROVED BY OWNER	Owner's Signature	Date



June 29, 2021

Garver
Attn: Dakota Zimmerman, PE
Resident Engineer

Ref: Woodlawn 37th to 45th – Utility Relocations (REVISED)

Dear Dakota:

As requested, we have tabulated costs to modify the installation of Waterline 2, 3 and 4 from directional drill to open cut. The total cost for this change is **\$52,324.90**. The following is a breakdown on the costs for lines 2, 3 and 4:

Traffic Control

New Item – Traffic Control – Closure of Woodlawn	1 Lump Sum	\$18,750.00
New Item – Message Boards (2 each)	45 Days @ \$100.00/Day	\$ 4,500.00

Line #2

Deducts:

Item No 2 – Pipe, WL 8"	82.8 LF @ \$61.00/LF	<\$5,050.80>
Item No 13 – Connect to Existing Pipe	2.0 Each @ \$1,900.00/Each	<\$3,800.00>
Item No 16 – Street Crossing by Directional Drill 8"	55.2 LF @ \$120.00/LF	<\$6,624.00>
Item No 21 – Pipe Abandoned in Place	82.8 LF @ \$6.00/LF	<\$ 496.80>
	TOTAL DEDUCT – Line #2	<\$15,971.60>

Add:

New Item – Open Cut Pipe, WL 8" & Remove Existing	82.8 LF @ \$250.00/LF	\$20,700.00
	Total Add – Line #2	\$ 4,728.40

Line #3

Deducts:

Item No 1 – Pipe, WL 8" DICL	5.5 LF @ \$75.00/LF	<\$ 412.50>
Item No 2 – Pipe, WL 8"	155.0 LF @ \$61.00/LF	<\$ 9,455.00>
Item No 13 – Connect to Existing Pipe	2.0 Each @ \$1,900.00/Each	<\$ 3,800.00>
Item No 16 – Street Crossing by Directional Drill 8"	86.5 LF @ \$120.00/LF	<\$10,380.00>
Item No 21 – Pipe Abandoned in Place	160.5 LF @ \$6.00/LF	<\$ 963.00>
	TOTAL DEDUCT – Line #3	<\$25,010.50>

Add:

New Item – Open Cut Pipe, WL 8" & Remove Existing	160.5 LF @ \$250.00/LF	\$40,125.00
	Total Add – Line #3	\$15,114.50

Line #4**Deduct:**

Item No 1 – Pipe, WL 8”	128.0 LF @ \$61.00/LF	<\$ 7,808.00>
Item No 13 – Connect to Existing Pipe	2.0 Each @ \$1,900.00/Each	<\$ 3,800.00>
Item No 16 – Street Crossing by Directional Drill 8”	86.6 LF @ \$120.00/LF	<\$10,392.00>
Item No 21 – Pipe Abandoned in Place	128.0 LF @6.00/LF	<\$ 768.00>
	Total Deduct – Line #4	<\$22,768.00>

Add:

New Item – Open Cut Pipe, WL 8” & Remove Existing	128.0 LF @ \$250.00/LF	\$32,000.00
	Total Add – Line #4	\$9,232.00

Total Add for this Change Order \$52,324.90
Total of 30 working days for additional work

Inclusions:

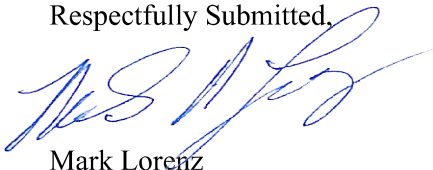
Traffic Control includes Closure of Woodlawn with limited access to Woodlawn Court.
Traffic Control includes design of detour route and signage
The open cut Pipe, WL 8” & Remove existing includes the required pipe connections

Exclusions:

Full depth asphalt pavement patch will be paid per bid unit prices
Contaminated soil remediation
Engineering
Surveying
Landscaping
SWPPP
Permits

If you have any questions, please feel free to email me at mlorenz@dondlingerconst.com or contact me at 316-680-3446.

Respectfully Submitted,



Mark Lorenz
Dondlinger Construction

WATER AND SANITARY SEWER IMPROVEMENTS FOR WOODLAWN AVENUE RECONSTRUCTION FROM 37TH ST. N. TO 45TH ST. N.

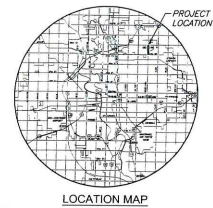
SEDGWICK COUNTY
CITY OF BELAIRE

20 WORKING
DAYS

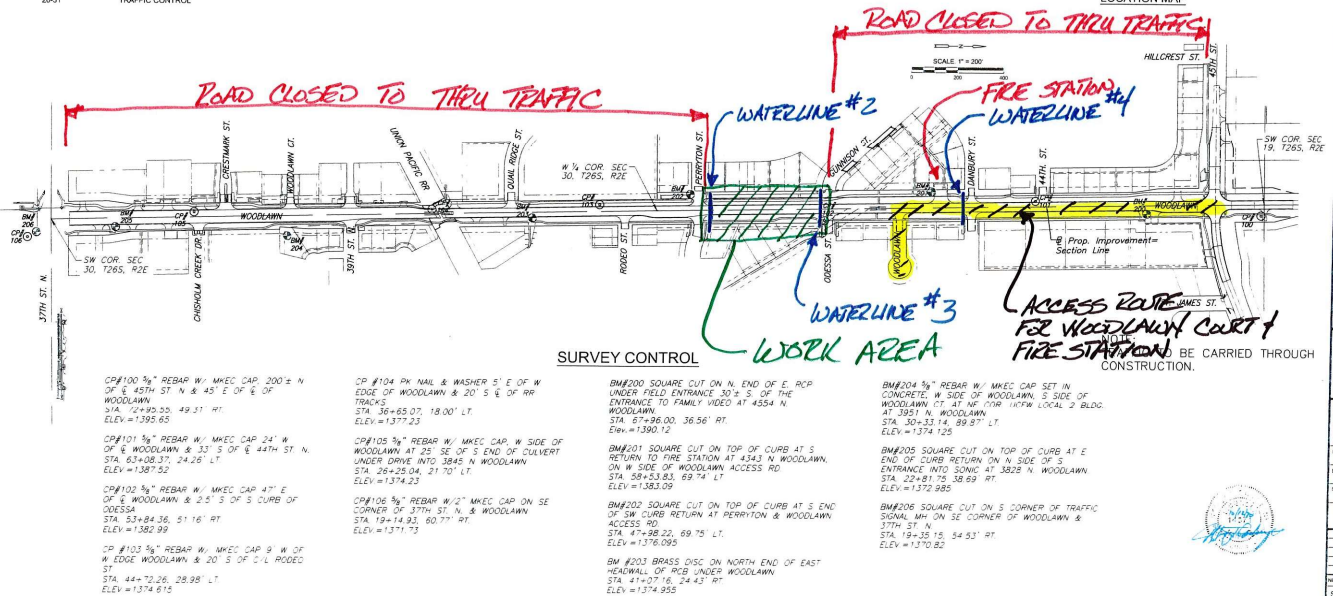
PHASE 1

INDEX TO DRAWINGS

SHEET NO.	DESCRIPTION
1	TITLE SHEET
2	GENERAL NOTES AND QUANTITY SUMMARY
3	KEY MAP
4-5	SANITARY SEWER PLAN AND PROFILES
6	SANITARY SEWER DETAILS & MANHOLE LINING
7-14	WATER LINE PLAN AND PROFILES
15	WATER POINT REPAIR PLAN
16-17	WATER LINE DETAILS
18-19	TYPICAL EROSION CONTROL PLANS AND DETAILS
20-31	TRAFFIC CONTROL



LOCATION MAP



WATER AND SANITARY SEWER IMPROVEMENTS FOR
WOODLAWN - 37TH ST. N. TO 45TH ST. N.
BELAIRE, KS

TITLE

PROJECT NO	18541	
DATE	10/12/2020	
SCALE	1"=200'	
DESIGNED	DRW	CHECKED
JTC	DM	JRA

WATER AND SANITARY SEWER IMPROVEMENTS FOR WOODLAWN AVENUE RECONSTRUCTION - FROM 37TH ST. N. TO 45TH ST. N.

SEDGWICK COUNTY
CITY OF BEL AIRE

PHASE 2

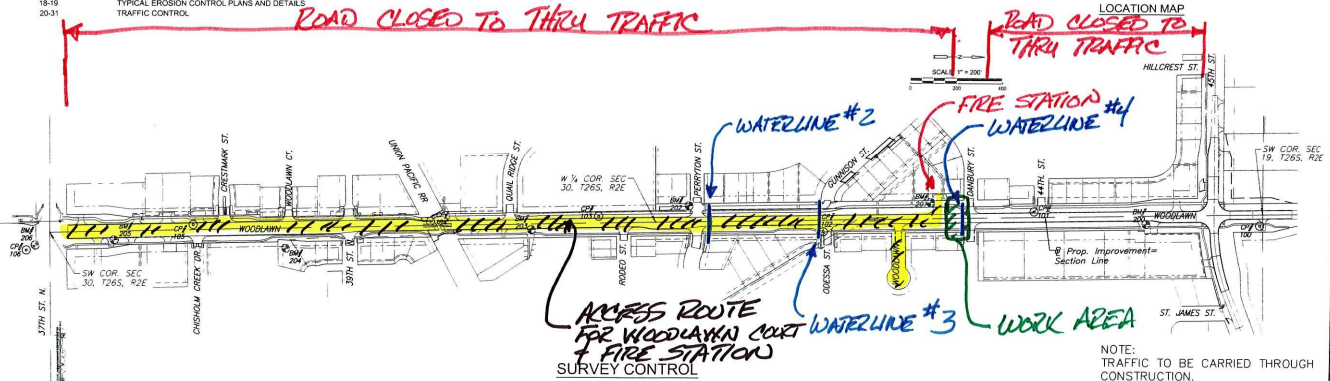
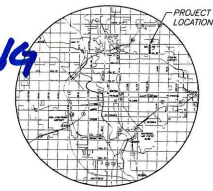


WATER AND SANITARY SEWER IMPROVEMENTS FOR
WOODLAWN - 37TH ST. N. TO 45TH ST. N.
BEL AIRE, KS

INDEX TO DRAWINGS

SHEET NO.	DESCRIPTION
1	TITLE SHEET
2	GENERAL NOTES AND QUANTITY SUMMARY
3	KEY MAP
4-5	SANITARY SEWER PLAN AND PROFILES
6	SANITARY SEWER DETAILS & MANHOLE LINING
7-14	WATER LINE PLAN AND PROFILES
15	WATER POINT REPAIR PLAN
16-17	WATER LINE DETAILS
18-19	TYPICAL EROSION CONTROL PLANS AND DETAILS
20-31	TRAFFIC CONTROL

10 WORKING DAYS



CP#100 3/4" REBAR W/ MKEC CAP 200'± N OF E 45TH ST N & 45' E OF E OF WOODLAWN
STA. 72+85.55, 49.31' RT
ELEV.=1395.65

CP#101 3/4" REBAR W/ MKEC CAP 24' W OF E WOODLAWN & 33' S OF E 44TH ST. N.
STA. 63+08.37, 24.26' LT
ELEV.=1387.52

CP#102 3/4" REBAR W/ MKEC CAP 47' E OF E WOODLAWN & 2.5' S OF S CURB OF DEESSA
STA. 53+84.36, 51.16' RT
ELEV.=1382.99

CP #103 3/4" REBAR W/ MKEC CAP 9' W OF W EDGE WOODLAWN & 20' S OF S/L RODEO ST
STA. 44+72.26, 28.98' LT
ELEV.=1374.615

CP #104 PK NAIL & WASHER 5' E OF W EDGE OF WOODLAWN & 20' S E OF RR TRACKS
STA. 36+65.07, 18.00' LT
ELEV.=1377.23

CP#105 3/4" REBAR W/ MKEC CAP. W SIDE OF WOODLAWN AT 25' SE OF S END OF CULVERT UNDER DRIVE INTO 3845 N WOODLAWN
STA. 26+25.04, 21.70' LT
ELEV.=1374.23

CP#106 3/4" REBAR W/2" MKEC CAP ON SE CORNER OF 37TH ST. N. & WOODLAWN
STA. 19+14.83, 60.77' RT
ELEV.=1371.73

BM#200 SQUARE CUT ON N. END OF E. RCP UNDER FIELD ENTRANCE 30'± S. OF THE ENTRANCE TO FAMILY VIDEO AT 4354 N WOODLAWN
STA. 67+96.00, 36.56' RT
Elev.=1390.12

BM#201 SQUARE CUT ON TOP OF CURB AT S RETURN TO FIRE STATION AT 4343 N WOODLAWN, ON W SIDE OF WOODLAWN ACCESS RD
STA. 69+53.83, 69.74' LT
ELEV.=1383.09

BM#202 SQUARE CUT ON TOP OF CURB AT S END OF SW CURB RETURN AT PERRYTON & WOODLAWN ACCESS RD
STA. 47+98.02, 69.75' LT
ELEV.=1376.095

BM #203 BRASS DISC ON NORTH END OF EAST SIDEWALK OF RCP UNDER WOODLAWN
STA. 41+07.16, 24.43' RT
ELEV.=1374.955

BM#204 3/4" REBAR W/ MKEC CAP SET IN CONCRETE, W SIDE OF WOODLAWN, S SIDE OF WOODLAWN CT AT NE COR. IOPW LOCAL 2 BLDG AT 3851 N WOODLAWN
STA. 30+33.14, 89.87' LT
ELEV.=1374.125

BM#205 SQUARE CUT ON TOP OF CURB AT E END OF CURB RETURN ON N SIDE OF S ENTRANCE INTO SONIC AT 3828 N WOODLAWN
STA. 22+81.75, 58.69' RT
ELEV.=1372.985

BM#206 SQUARE CUT ON S CORNER OF TRAFFIC SIGNAL MH ON SE CORNER OF WOODLAWN & 37TH ST. N.
STA. 19+35.15, 54.53' RT
ELEV.=1370.82

NOTE:
TRAFFIC TO BE CARRIED THROUGH CONSTRUCTION.



TITLE		
PROJECT NO	18541	
DATE	10/12/2020	
SCALE	1"=200'	
DESIGNED	CHANN	CHECKED
JTC	DM	JRA
NO	REV	DATE
SHEET NO		
1 OF 31		