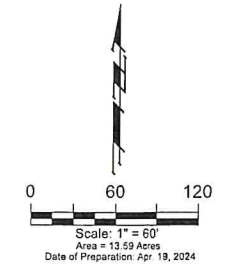


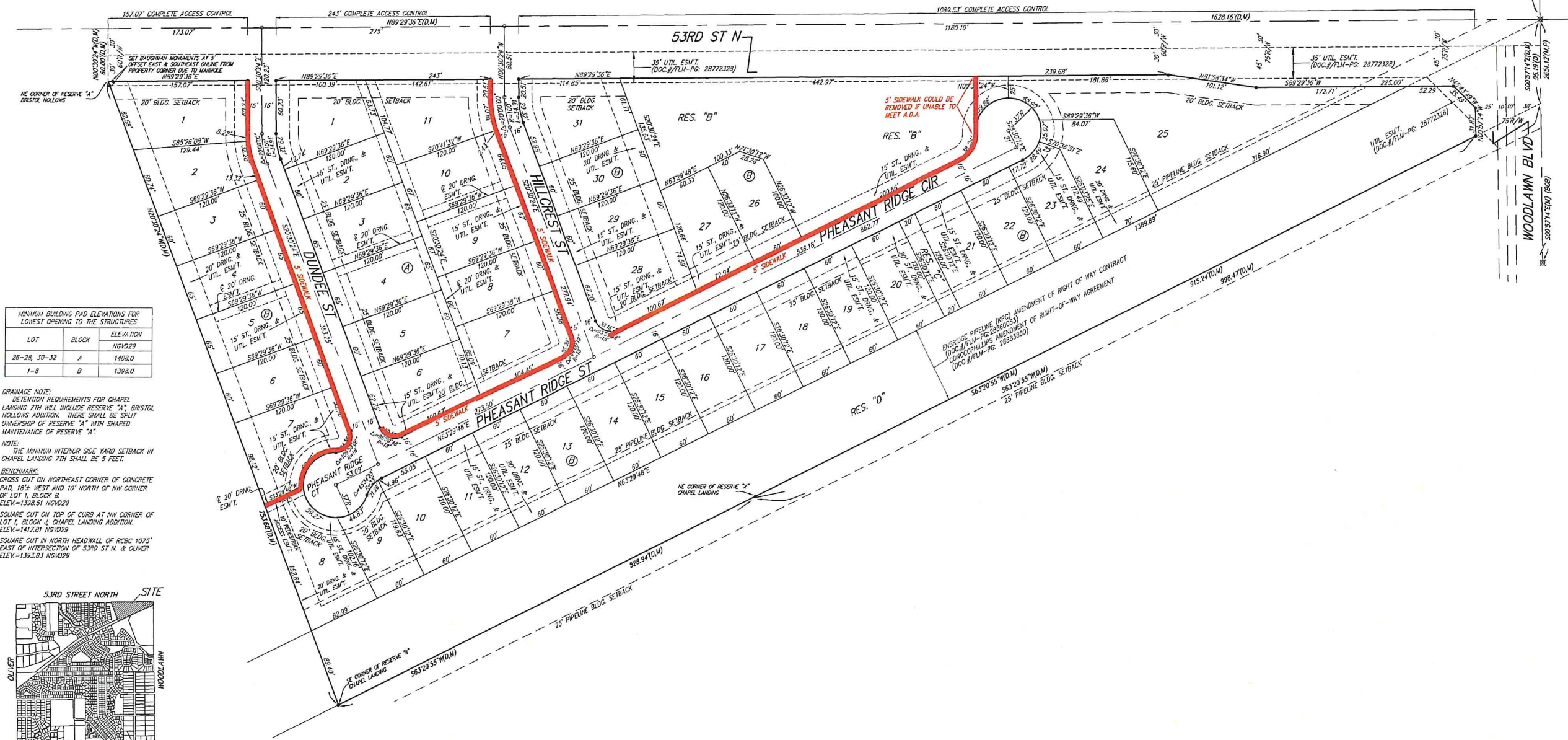
SIDEWALK EXHIBIT
CHAPEL LANDING 7TH
 BEL AIRE, SEDGWICK COUNTY, KANSAS
 NE 1/4 OF SEC. 24, T-26-S, R-1-E

NE COR., NE 1/4, SEC. 24,
 TWP. 26-S, R-1-E



Area = 13.59 Acres
 Date of Preparation: Apr. 19, 2024

- = #4 REBAR W/ "BAUGHMAN" CAP (SET)
- ⊗ = 5/8" REBAR W/ ILLEGIBLE CAP (FOUND)
- (M) = MEASURED
- (P) = PLATTED
- (O) = OBSOLETE
- (BOB) = BASIS OF BEARINGS (KANSAS GRID SOUTH NAD83)



MINIMUM BUILDING PAD ELEVATIONS FOR LOWEST OPENING TO THE STRUCTURES

LOT	BLOCK	ELEVATION
26-28, 30-32	A	1408.0
1-8	B	1398.0

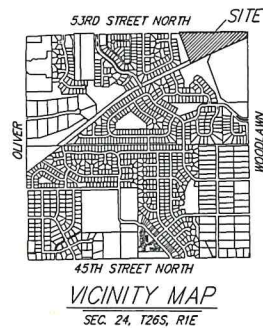
DRAINAGE NOTE:
 RETENTION REQUIREMENTS FOR CHAPEL LANDING 7TH WILL INCLUDE RESERVE "A", BRISTOL HOLLOW'S ADDITION. THERE SHALL BE SPLIT OWNERSHIP OF RESERVE "A" WITH SHARED MAINTENANCE OF RESERVE "A".

NOTE:
 THE MINIMUM INTERIOR SIDE YARD SETBACK IN CHAPEL LANDING 7TH SHALL BE 5 FEET.

BENCHMARK:
 CROSS CUT ON NORTHEAST CORNER OF CONCRETE PAD, 18 1/2 WEST AND 10' NORTH OF NW CORNER OF LOT 1, BLOCK B.
 ELEV = 1398.51 NGVD29

SQUARE CUT ON TOP OF CURB AT NW CORNER OF LOT 1, BLOCK "A", CHAPEL LANDING ADDITION.
 ELEV = 1417.01 NGVD29

SQUARE CUT IN NORTH HEADWALL OF R03C 1075' EAST OF INTERSECTION OF 53RD ST. N. & OLIVER
 ELEV = 1393.83 NGVD29



SIDEWALK EXHIBIT
CHAPEL LANDING 7TH
 REV. Apr. 19, 2024

BAUGHMAN COMPANY
 315 Ellis St. Wichita, KS 67211 316-262-7271
 BaughmanCo.com

E:\Projects\Chapel Landing 7th Addition (20-12-18-19)\P\Drawings\Chapel Landing 7th Revised Sidewalk.dwg