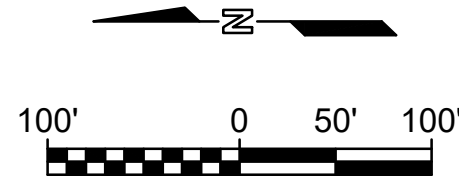
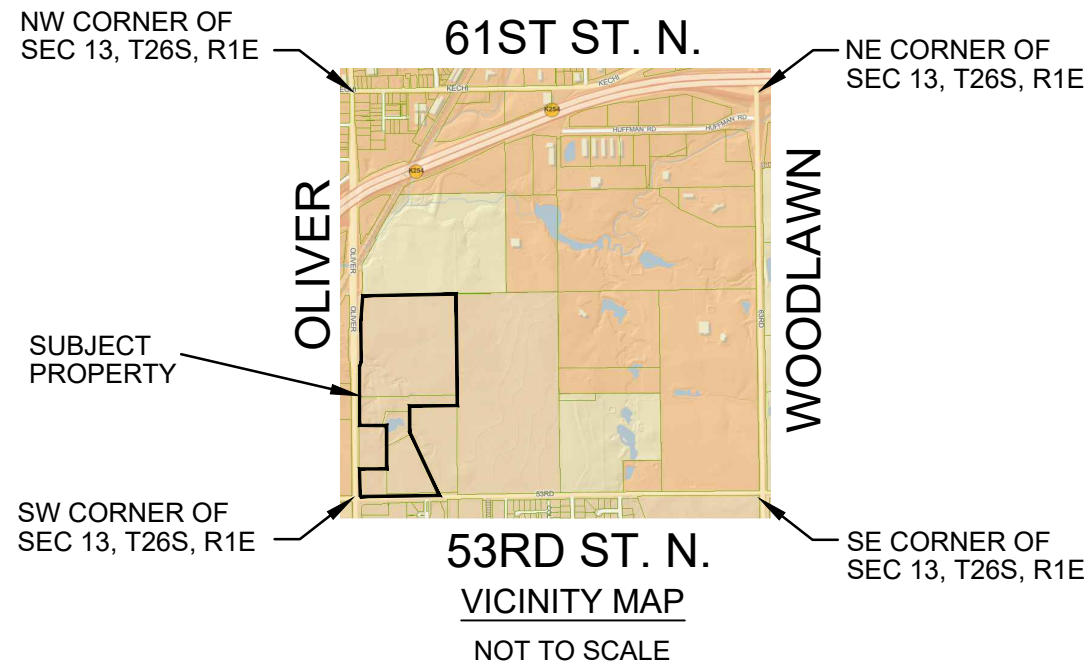


File: L:\2023\141-2301794- 53rd and Oliver Hsu Due Diligence Drawings\DESIGN\141- 2301794 DRAINAGE BASE.dwg Last Save: 10/1/2024 5:29 PM Last saved by: KWL Lee
Last plotted by: Lee, Ken W. Plot Style: --- Plot Scale: 1/2"=40' Plot Date: 10/1/2024 6:00 PM Plotter used: None



NOTES

1. The onsite soils are primarily Clime Silty Clay (Hydrologic Group D) north of the onsite pond and Farnum Loam (Hydrologic Group B) south of the pond. A Soil Map will be provided in supplementary information with Final Plat.
2. Roadway improvements, storm sewer and culverts to be installed in this development must comply with City of Bel Aire design standards.
3. The proposed detention pond will detain developed flows to at or below pre-developed levels.
4. The storm sewer for the apartment Complex area (Lot 1, Block 6) will be designed at the time of the development of that lot.

PRELIMINARY DRAINAGE CONCEPT

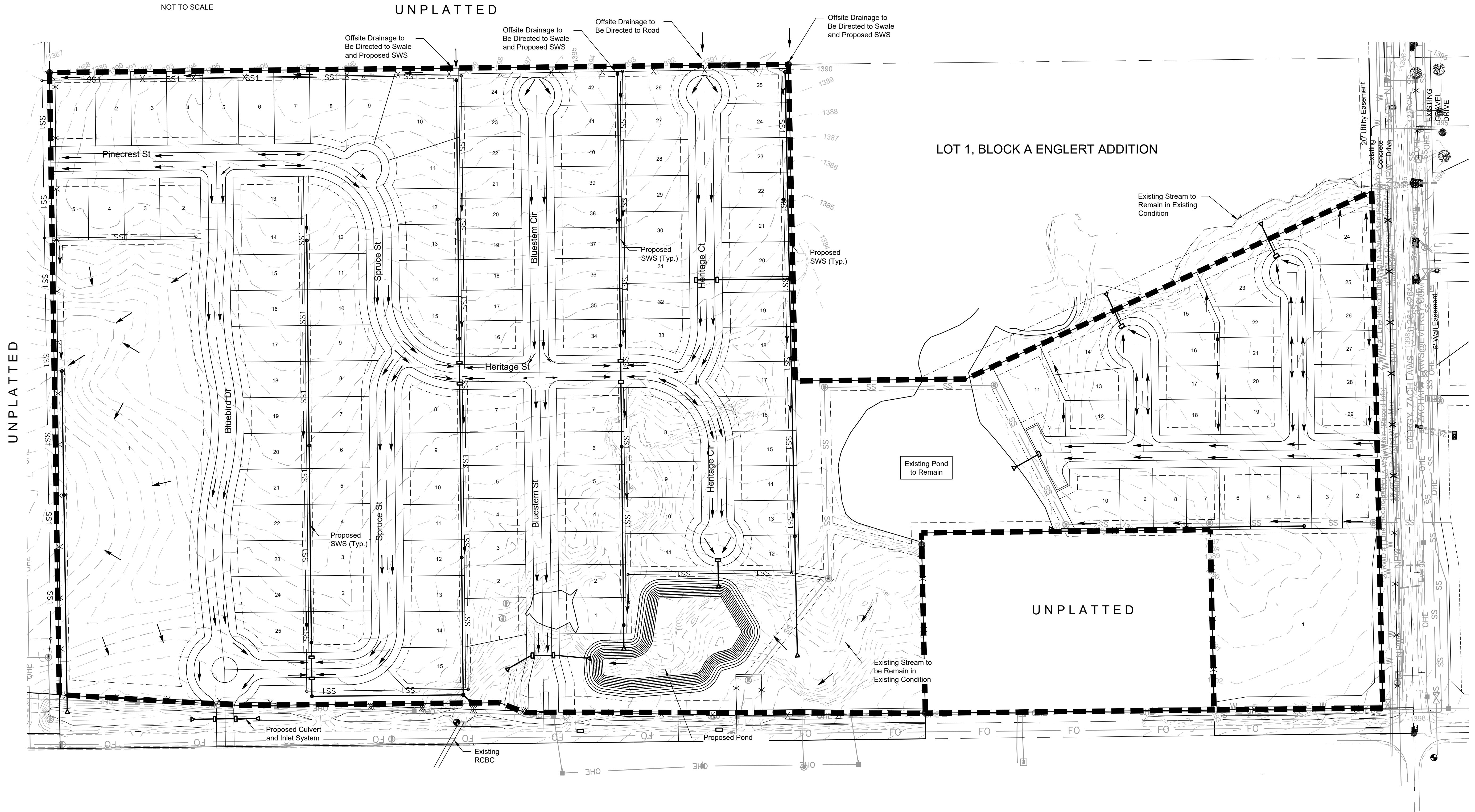
HOMESTEAD AT SPRING

Bel Aire, Sedgwick County, Kansas



© 2024 GARVER, LLC
THIS DOCUMENT, ALONG WITH THE IDEAS AND DESIGNS CONVEYED HEREIN, SHALL BE CONSIDERED INSTRUMENTS OF PROFESSIONAL SERVICE AND ARE PROPERTY OF GARVER, LLC. ANY USE, REPRODUCTION, OR DISTRIBUTION OF THIS DOCUMENT, ALONG WITH THE IDEAS AND DESIGN CONTAINED HEREIN, IS PROHIBITED UNLESS AUTHORIZED IN WRITING BY GARVER, LLC OR EXPLICITLY ALLOWED IN THE GOVERNING PROFESSIONAL SERVICES AGREEMENT FOR THIS WORK.

1995 Midfield Road
Wichita, KS 67206
(316) 264-8008



REV.	DATE	DESCRIPTION	BY



CITY OF BEL AIRE
BEL AIRE, KANSAS

HOMESTEAD AT SPRING

Drainage
Concept

JOB NO.: 2400521
DATE: 9/30/2024
DESIGNED BY: .
DRAWN BY: MCP

BAR IS ONE INCH ON
ORIGINAL DRAWING
IF NOT ONE INCH ON THIS SHEET,
ADJUST SCALES ACCORDINGLY.

DRAWING NUMBER

SHEET
NUMBER 1 OF 1