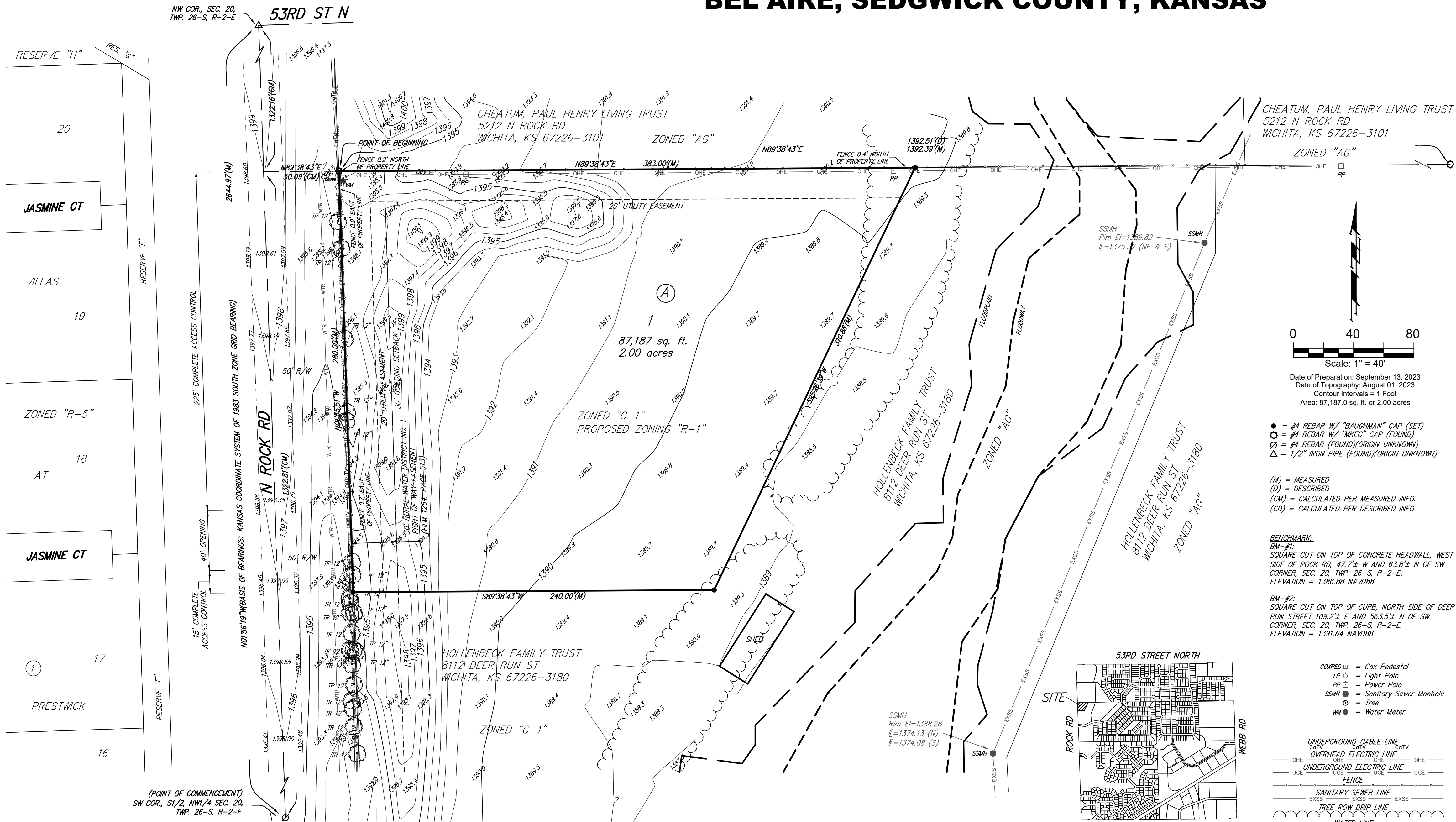


ONE-STEP FINAL PLAT

# HOLLENBECK FARM

## BEL AIRE, SEDGWICK COUNTY, KANSAS



State of Kansas) SS We, Baughman Company, P.A., Surveyors in Sedgwick County) and state do hereby certify that we have surveyed and platted "HOLLENBECK FARM", Bel Aire, Sedgwick County, Kansas and that the accompanying plat is a true and correct exhibit of the property surveyed, described as that part of the South Half of the Northwest Quarter of Section 20, Township 26 South, Range 2 East of the Sixth Principal Meridian, Sedgwick County, Kansas described as follows: Commencing at the Southwest Corner of said South Half, thence along the West line of said South Half N01°56'19"W, 1322.81 feet; thence along the North line of said South Half N89°38'43"E, 50.09 feet to the Point of Beginning; thence continuing along said North line N89°38'43"E, 383.00 feet; thence S25°26'39"W, 310.88 feet; thence S89°38'43"W, 240.00 feet to a point on the East right-of-way line of Rock Road; thence along the East right-of-way line of Rock Road N01°55'51"W, 280.00 feet to the Point of Beginning.

Existing public easements and dedications being vacated by virtue of K.S.A. 12-512b, as amended.

All being situated in the Southwest Quarter of Section 20, Township 26 South, Range 2 East of the Sixth Principal Meridian, Sedgwick County, Kansas.

Baughman Company, P.A.

Jonathan C. Hubbell, P.S. #1680, Surveyor

Know all men by these presents that we, the undersigned, have caused the land in the surveyors certificate to be platted into a Lot and a Block, to be known as "HOLLENBECK FARM", Bel Aire, Sedgwick County, Kansas. The utility easements are hereby granted to the public as indicated for the construction and maintenance of all public utilities. Access controls shall be as depicted on the face of the plat and are hereby granted to the appropriate governing body.

Hollenbeck Family Trust dated September 21, 2022

Steven M. Hollenbeck, Trustee

Beth R. Hollenbeck, Trustee

State of Kansas) SS The foregoing instrument acknowledged before me, this day of 2023, by Steven M. Hollenbeck and Beth R. Hollenbeck, Trustees of the Hollenbeck Family Trust dated September 21, 2022, on behalf of the trust.

My App't. Exp. Notary Public

We the undersigned holders of a mortgage on the above described property, do hereby consent to this plat of "HOLLENBECK FARM", Bel Aire, Sedgwick County, Kansas.

Cross First Bank

State of Kansas) SS The foregoing instrument acknowledged before me, this day of 2023, by of Cross First Bank, on behalf of the bank.

My App't. Exp. Notary Public

State of Kansas) SS This plat of "HOLLENBECK FARM", Bel Aire, Sedgwick County, Kansas has been submitted to and approved by the Bel Aire Planning Commission, Bel Aire, Kansas. Dated this day of 2023. Bel Aire Planning Commission

James Schmidt, Chairman

Keith Price, Secretary

This plat approved and all dedications shown hereon accepted by the City Council of the City of Bel Aire, Kansas, this day of 2023.

Jim Benage, Mayor

Melissa Krehbiel, City Clerk

State of Kansas) SS The title evidence of the land included in this plat has been review by me and this plat is approved pursuant to the provisions of K.S.A. 12-401.

Maria Schrock, City Attorney

Reviewed in accordance with K.S.A. 58-2005 on this day of 2023.

Tricia L. Robello, P.S. #1246 Deputy County Surveyor Sedgwick County, Kansas

Entered on transfer record this day of 2023.

Kelly B. Arnold, County Clerk

State of Kansas) SS This is to certify that this plat has been filed for record in the office of the Register of Deeds, this day of 2023 at o'clock M, and is duly recorded.

Tonya Buckingham, Register of Deeds

Kenly Zehring, Deputy

HOLLENBECK FARM

September 13, 2023

BAUGHMAN COMPANY  
315 Ellis St. Wichita, KS 67211 316-262-7271  
BaughmanCo.com