

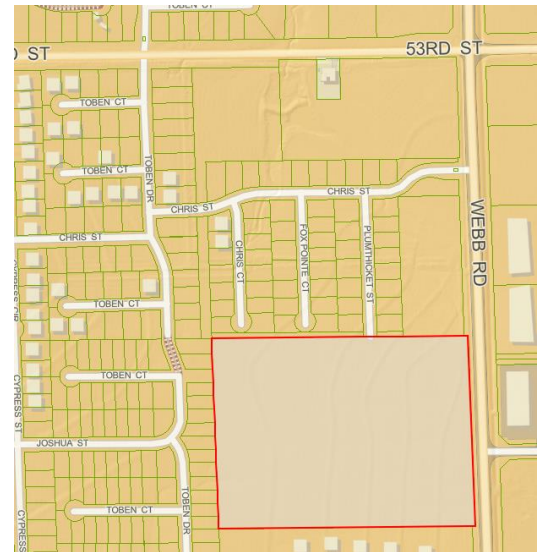


DATE: September 23, 2025
TO: Bel Aire City Council
FROM: Ted Henry, City Manager
SUBJECT: Skyview at Webb Engineering Agreement

Summary

The Developer is ready to begin engineering design for Phase 1 of the Skyview at Webb development. They previously worked with MKEC on the subdivision platting and have asked MKEC to provide an agreement for engineering design and staking services for Phase 1 of the development.

Over the past 10 years, the City of Bel Aire has experienced significant growth. During this time, we have worked with area Developers to plan, design, and construct water mains, sanitary sewer mains, drainage systems, site grading and street improvements to serve new residential neighborhoods. This process mirrors what similarly situated cities follow when converting green space, such as pastures or hayfields into residential developments.



Throughout this growth, the City has allowed Developers to work with their preferred engineering firms, providing the Developer with a sense of security and confidence by working with a trusted partner. The City has employed an in-house City Engineer for the past decade, which works closely with the chosen engineering firm to ensure that the City's neighborhood development standards and preferences are met.

Special assessments on future homeowners cover all development-related costs, including this contract for engineering.

To our knowledge, the City has never required developers to solicit competitive bids for engineering services or mandated the use of a particular firm. A competitive bidding process has, however, always been required for the construction of water, sanitary sewer, paving, grading, and drainage infrastructure.

Over the past month, MKEC, the City Engineer, and the City Attorney have met several times to develop the agreement now before you.

