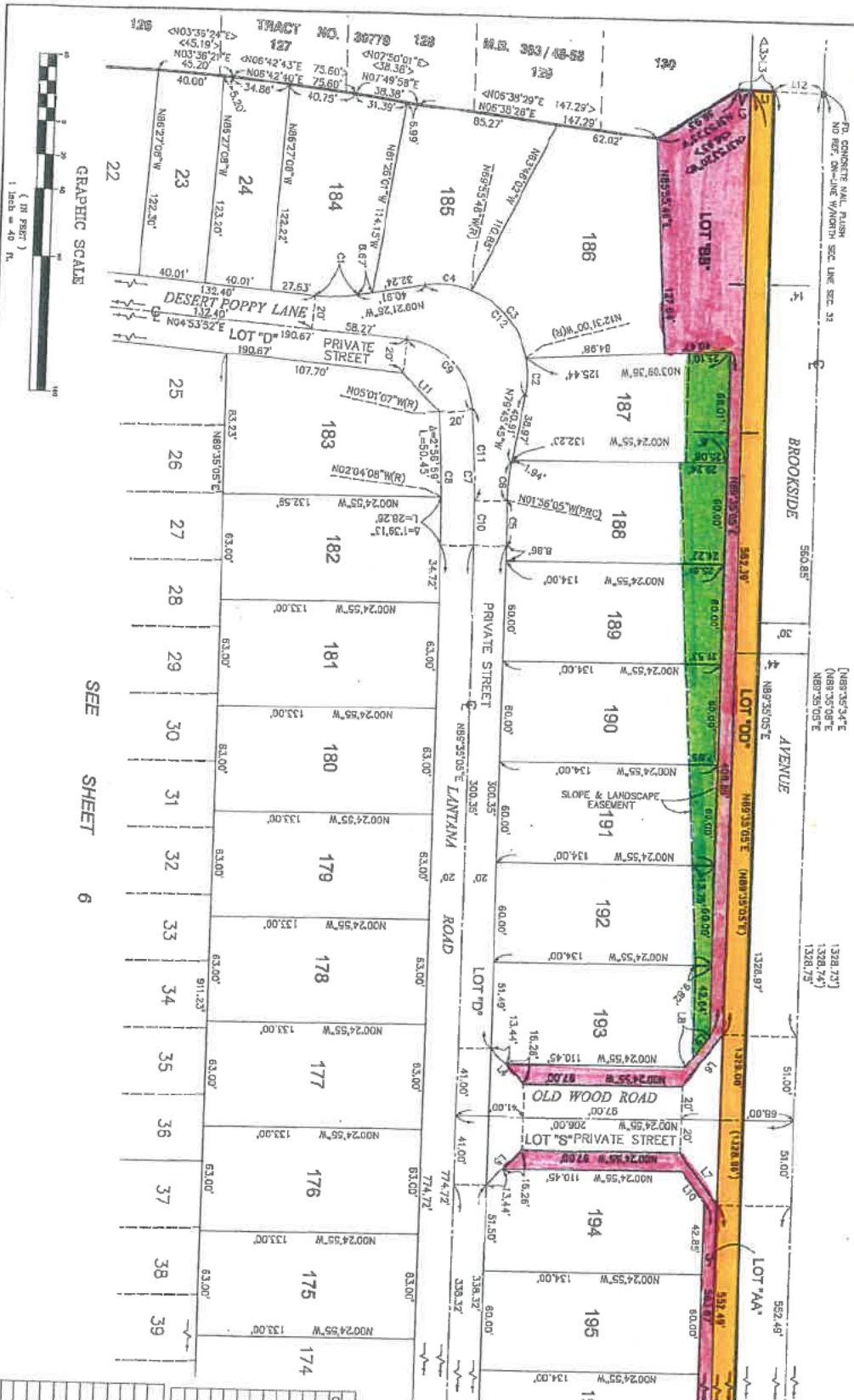


CoB
 HOA Transferred to CoB
 Private Parcels

IN THE CITY OF BEAUMONT, COUNTY OF RIVERSIDE, STATE OF CALIFORNIA
TRACT NO. 32325

BEING A SUBDIVISION OF PARCELS 2 AND 3 AND A PORTION OF PARCEL 4 OF PARCEL MAP NO. 28102 AS
 RECORDED IN BOOK C88, PAGES 40-48 INCLUSIVE, OF PARCEL MAPS IN THE OFFICE OF THE COUNTY RECORDER OF
 RIVERSIDE COUNTY, CALIFORNIA, AND PARCEL 2, AS SHOWN ON L.A. NO. 94-141-001-000 DATED JULY 13, 2004 AS
 INST. NO. 2004-0546004 OF THE COUNTY RECORDS OF SAID COUNTY, LYING WITHIN SECTION 32, T. 2. S. R. 1. W., S.B.M.
 FEBRUARY, 2005
 PROGRESSIVE MAPPING CONSULTANTS, INC.



SEE SHEET 6

SEE SHEET 5

CURVE	DELTA	RADIUS	LENGTH
C1	145.18°	108.00'	28.12'
C2	272.4574°	58.00'	21.84'
C3	57.2446°	58.00'	21.84'
C4	89.2536°	58.00'	28.29'
C5	131.10°	105.00'	27.05'
C6	121.072°	105.00'	27.05'
C7	4.3812°	1000.00'	62.31'
C8	4.3512°	980.00'	78.74'
C9	89.0001°	45.00'	62.90'
C10	1.3110°	1000.00'	26.57'
C11	3.0502°	1000.00'	53.87'
C12	108.2540°	35.00'	108.26'

LINE	BEARING	LENGTH
L1	N01.34.51°E	14.61'
L2	N01.34.51°E	8.00'
L3	N01.34.51°E	22.01'
L4	<N01.34.46°E>	<22.01'>
L5	N44.9505°E	28.70'
L6	N49.2455°W	29.70'
L7	N49.2455°W	30.20'
L8	N91.5017°E	30.20'
L9	N52.4007°W	22.95'
L10	N52.4007°W	18.04'
L11	N51.5017°E	22.95'
L12	N44.5823°E	32.17'
L13	N01.34.51°E	30.00'

2005-09169211
 ORIGINAL
 39
 4