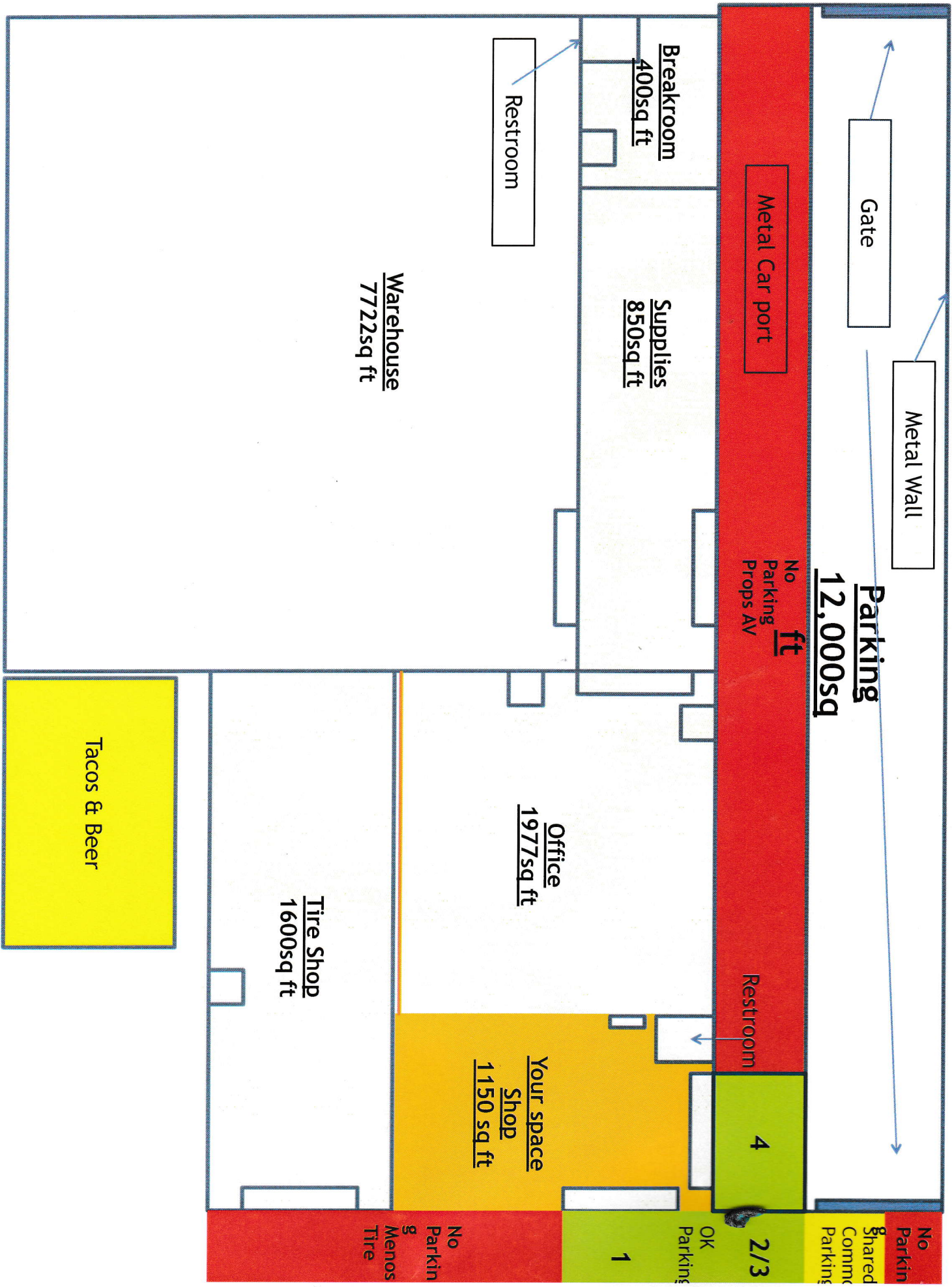


945 e. 6th Street - Lower Level View



Gate

Metal Wall

Parking  
12,000sq

No  
Parking  
Props Av

Metal Car port

Breakroom  
400sq ft

Supplies  
850sq ft

Restroom

Warehouse  
7722sq ft

Office  
1977sq ft

Tire Shop  
1600sq ft

Your space  
Shop  
1150 sq ft

Tacos & Beer

Restroom

4

2/3

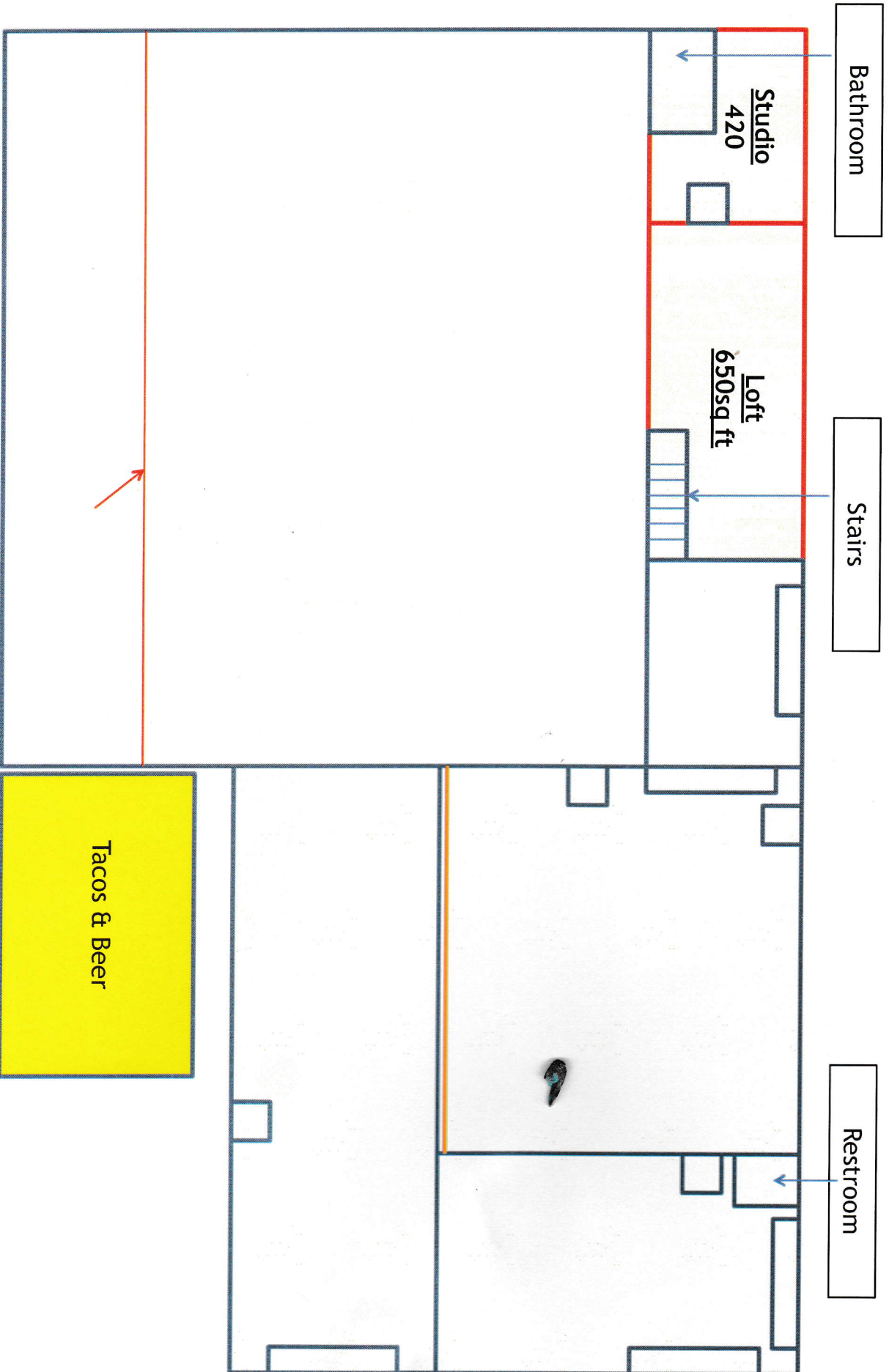
OK  
Parking

1

No  
Parking  
Mens  
Tire

No  
Parkin  
g  
Shared  
Comm  
Parkin  
g

# 945 e. 6th Street - Upper Level View



Chestnut Ave

Work Bench

Shop  
1150sq  
ft

Man Door

Restroom

Electrical Panel

Bay door

Bay door

Landlord  
Props AV's  
Offices

29.5'

Parking

Parking

Parking

Gate

39'

