



CITY OF BEAUMONT

REQUEST FOR PROPOSAL FOR PROFESSIONAL SERVICES
ARCHITECTURE DESIGN FOR THE CITY HALL RENOVATION



Prepared for

Ms. Kristine Day
Assistant City Manager
550 E. 6th Street
Beaumont, CA 92223

Due Date

June 4, 2021



TABLE OF CONTENTS



CONTENTS

TABLE OF CONTENTS.....	1
A. COVER LETTER.....	2
B. INTRODUCTION/INFORMATION.....	1
C. FIRM'S APPROACH.....	3
D. FIRM PROFILE	7
E. RESUMES OF CONSULTANT TEAM.....	9
F. RESUMES OF KEY PERSONNEL	13
G. REFERENCES.....	18
H. SCOPE OF SERVICES.....	19
I. COST	20
J. ADDITIONAL INFORMATION	21
K. INSURANCE REQUIREMENTS	24



A. COVER LETTER



June 4, 2021

Ms. Kristine Day
Assistant City Manager
City of Beaumont
550 East 6th Street
Beaumont, CA 92223

RE: Request for Proposal for Architectural Design for the City Hall Renovations

Dear Ms. Day and Members of the City of Beaumont Selection Committee,

Thank you for the opportunity to submit our qualifications for Architectural Services to the City of Beaumont (City) in response to your Request for Proposal. As a nearby firm located in your sister city of Redlands, we are excited for the possibility to capture the spirit of the City of Beaumont in the design renovations at its City Hall. We are delighted to demonstrate our experience, processes, and knowledge in civic design and project delivery and that Focus | Create | Deliver is more than just our tagline.

SGH Architects formed in early 2018 when fellow seasoned architects Michael Stephens, AIA, NCARB, and Scott Griffith, AIA, joined forces. The vision of the firm's formation was the common philosophy of its Partners to provide unparalleled client-centric service and exceptional architectural design solutions.

Your RFP identifies a need for an architectural firm with a strong focus on public facility design and an understanding of the City's need to expand its 10,000+ ft² City Hall office spaces. With 60 years of cumulative Principal experience and extensive involvement in every aspect of public facility development, we provide functional design solutions that can be built to meet your schedule and budget constraints, while incorporating our design expertise. Our approach embraces the City and community in the design process as the conversations, meetings, and input are ultimately reflected in the design results in a truly collaborative effort.

Our approach takes the following into account:

- Our design process integrates cost-effective strategies and alternatives. It incorporates a deep understanding of the needs associated with remodeling existing spaces, designing new spaces, accessibility requirements, office space design and planning, and historical structure review.
- We carefully weigh initial and long-term operating costs to select materials for durability and ease of maintenance.
- Value, sustainability, and energy efficiency are holistically integrated into our design solutions.
- Successful public-works project delivery experience with multiple project types and delivery methods with state and local jurisdictions.

Our Team Brings a Unique City Public Works Perspective

Michael Stephens, AIA, Principal-in-Charge, is a former Director of Construction at Riverside Community College District who assisted in managing over \$200M of that District's Measure C Bond Program. Michael brings an invaluable owner's perspective and insider knowledge to each phase of a project. He is supported by a seasoned team of technical and design professionals with strong Public Works and Design-Build experience. A sample of the Team's recent experience includes: the Lake Arrowhead Community Services District's new Corporate Yard Facility, Valley Sanitary District's new Training, Office and Laboratory Buildings, and various small renovation and improvement projects for the City of Redlands. Additionally, we are currently collaborating with the City of Redlands to transform their new Transit Village downtown area.



A. COVER LETTER (Continued)

A Qualified Team

With the understanding that the City must approve all subconsultants, we have assembled an exceptional team of consultants who, along with SGH Architects, possess the necessary experience to provide an integrated technical design solution to fulfill the City's needs – from feasibility study to design through project representation to project completion. We are committed to hands-on project management by the Principals of the firm. We will be at the interview, we'll be there when your project starts, and we'll be there for you to see it through completion. That is our promise to you. That is why we formed this firm.

We look forward to answering any question you may have about this proposal or our capabilities.

Sincerely,
SGH Architects

Michael J. Stephens, AIA, NCARB
Principal | Partner
mstephens@sgharch.com
(909) 375-3030 ext. 41

Scott Griffith, AIA
Principal | Partner
sgriffith@sgharch.com
(909) 375-3030 ext. 30

B. INTRODUCTION/INFORMATION

Firm Background

SGH Architects is a Redlands, California-based architectural design firm officially established in January of 2018. The firm was created when well-established and respected and local architects Michael Stephens, AIA, NCARB, Scott Griffith, AIA joined forces. With over 60-years of combined experience in civic, workplace, commercial, and education facility design, SGH Architects delivers innovative architectural solutions and unparalleled client-centric service.

City of Beaumont Project Understanding

The City seeks a qualified architectural firm to provide professional design services for its City Hall renovations. The renovations shall include reconfiguring and remodeling the existing 10,000 ft² spaces of the more than 100-year-old building.

We have carefully reviewed Exhibit B - Scope of Service, provided in the RFP. We understand the selected firm will work in close collaboration with the City of Beaumont's Management Project Team to: create a new floorplan to optimize the flow of customer service spaces, increase office space, upgrade HVAC units and fire systems, new roofing and flooring, upgrade public restroom, construct two unisex bathrooms, create a Mother's Room, replacement of windows in Building B, and other improvements.

Our Team's collective design experience allows us to offer comprehensive architectural services to the City of Beaumont.



Principal | Partners
Michael Stephens, AIA, NCARB, and Scott Griffith, AIA

”

Our philosophy is founded on exceptional service and solving functional issues. This is the driving force in every project we develop.”

The Right Team

SGH Architects has 23 dedicated employee team members; 5 licensed Architects, 14 Professional Staff and 4 Support Staff. (An organizational chart is depicted in Section D. Firm Profile.) Our diverse team members are dedicated to developing innovative and collaborative solutions that enhance communities.

Understanding that the City must approve all Sub-consultants, we have assembled the following team of consultants we have successfully worked with on similar projects. Section E will include resumes for the key individuals of the following firms:

- KNA Structural - Structural Engineering
- DCGA - Mechanical, Electrical, Plumbing, Fire
- HL Construction Management - Construction Cost & Budget Management

Firm Philosophy

Our philosophy is founded on exceptional service and solving functional issues. This is the driving force in every project we develop.

Our firm's focus is on the clear definition of roles and responsibilities to ensure an understanding of tasks, deadlines, and deliverables. We believe that maintaining open communication is the key to the success of every project.

Office Location:
707 Brookside Avenue
Redlands, CA 92373
San Bernardino County
P: 909.375.3030
F: 909.375.4040
W: sgharch.com

B. INTRODUCTION/INFORMATION (Continued)

Value Engineering Concepts - Value Design

Our approach to Value Engineering is to be proactive and provide Value Design instead. This requires us to research opportunities that will help increase innovation and improve performance through strategic implementation of cost-effective ideas. We integrate Value Design into the conceptual design, engineering, project development and construction management stages of the project to eliminate unnecessary costs without losing key project components. We will provide suggestions and guidance for a tailored solution, offer choices of finish materials and design features, and provide guidance on choices for technology that best aligns the project needs with the project budget.

Having options facilitates collaboration, conversation and shared & informed decision-making process that results in bringing out the best possible design solution and value.



Ability to Design Within Project Budget

Realistic project cost estimates, even early in the process, are crucial to managing any project budget. SGH Architects' estimating partners have over 20 years' experience in preparing project cost estimates at all design phases of a project. Not relying solely on published cost data, our estimator prepares estimates compiled from databases with real market data and managed with local marketplace resources, delivering the most accurate cost data to each project, with appropriate contingencies for scope and construction changes. With the use of this realistic data, loss of scope and costly re-design is minimized, and risk is greatly reduced.

We also understand the realities of a volatile construction market, and temper project expectations with our experience in these types of bidding markets, which in turn helps us strategize with Cities on developing project phasing plans, bid alternates, differing project approaches or delivery methods to maximize City funds.

Our strategy for cost control is to develop an early cost model with appropriate contingencies and update it at each phase of the project, adjusting the contingencies and noting items that threaten the overall project budget.





C. FIRM'S APPROACH

FOCUS | CREATE | DELIVER

FOCUS

It all starts with the Plan

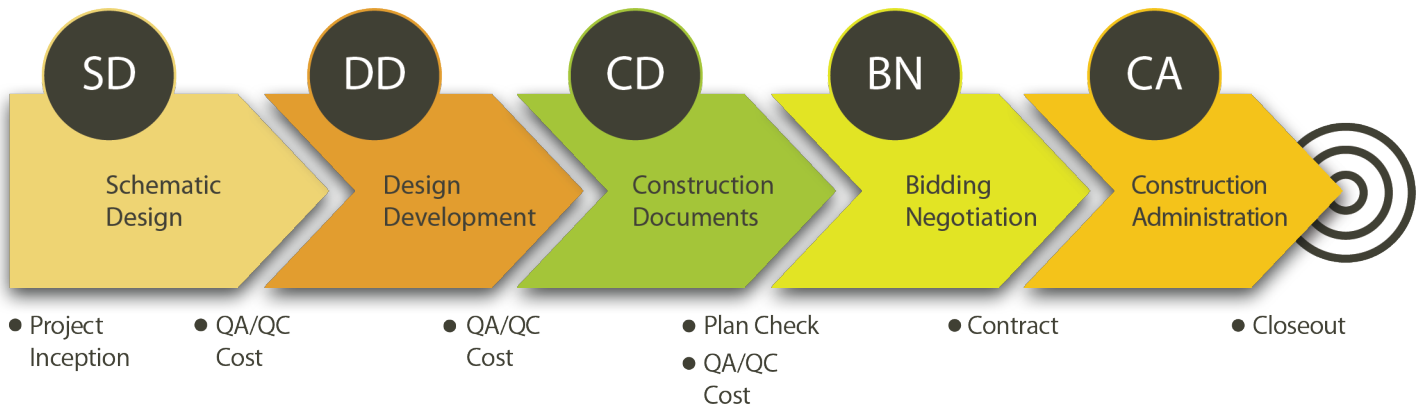
SGH Architects strategically structures a work plan to meet all the objectives and deliverables for each project. Each team member, including the City is tasked with responsibilities to assist the team in meeting deadlines and supplying required information, with appropriate milestones.

Working the Plan

Understanding that each project might be similar in scope, but very different in needs and challenges they present, is a critical factor to how we approach a project. A clear work plan, accurate schedule, complete program and realistic budget all contribute to project delivery process and are critical to managing expectations.

Architectural Services Workflow

Planning | Design | Development | Coordination | Construction | Deliver



We start by Focusing in the Planning Phase

Focus starts by listening to the City, the stakeholders and the community, from the first kick off meeting - as we plan and prepare - to the final approved construction plans and specifications. Focusing is key to our design process and begins with an understanding of project goals, objectives, parameters, schedule and budget through gathering critical data from all stakeholders, record drawings, investigation reports, existing CAD files, and legal documents.

We feel it's not only to plan for the present but also looking to the future. Considering such factors as maintenance, adaptability, sustainability, short and long-term equipment life-cycle costs, and assemble all pertinent data that may influence the expected outcome of the project. This is accomplished through assessment meetings, questionnaires or outreach exercises we administer, which results in influencing strategic planning & conceptual building plans, layouts and recommendations.

The culmination of the Planning Phase is the presentation of the ideas, conceptual plans, alternative layouts and comparisons, conceptual level cost summary and recommendations for a tailored solution.



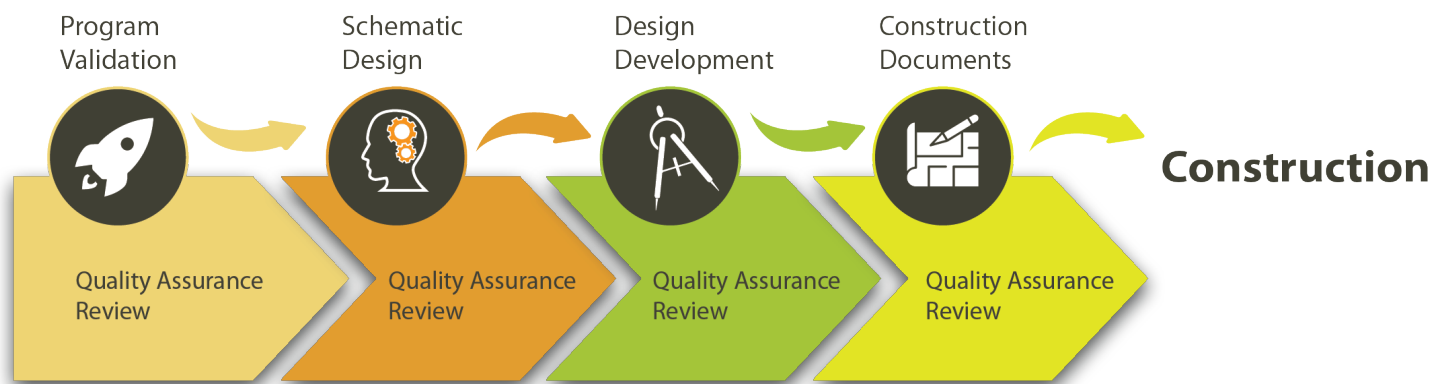
C. FIRM'S APPROACH (Continued)

CREATE

Evolution of the Design Phase

As we move through the design phases (Schematic Design into Design Development), we continually hone the project parameters and align the design response with the design challenge to arrive at the optimal solution. This evolution applies to nearly every department within a City and represents a growing trend in the way people like to work. This mindset is our process when conceptualize workplace environments. We start with the foundation of using the critical planning phase elements to create the plan layouts, coordinate for the most efficient and practical building systems, and simultaneously create three-dimensional images to provide the visualization concepts for review and further refinement in coordination with the project budget.

The culmination of the Design Phase is the development of the design that fixes and defines the project scope.



Finalization and Implementation of the Design

We work closely with the City, consultants, and applicable agencies to prepare and finalize the deliverables (plans and specifications) of the project. We incorporate a vigorous in-house quality assurance program that helps better coordinate the disciplines and information contained within the documents for pricing and construction purposes.

Finally, we work closely with staff to develop bid documents, assist in the administration of the bid through issuance of clarifications, and assist in the bid evaluation prior to the recommendation to your board for award.

Manage the Design through Construction

The work-plan includes effort and task responsibility for Construction Administration. We have the experience necessary to assist the City through the administration of the construction contract by observing the work of the contractor, managing the review of the submittals and Requests for Information (RFI's), reviewing pay applications, among other things to assist you in ensuring the work is performed in compliance with the Contract Documents and that the design intent everyone worked so hard to achieve, is met.



C. FIRM'S APPROACH (Continued)

DELIVER

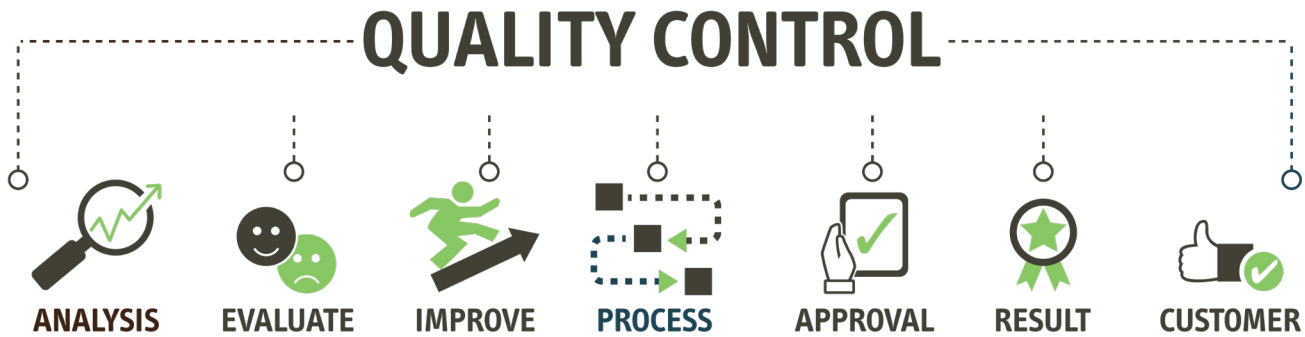
Schedule Goal

Our process is dependent on the development of the Project Work Plan, which incorporates all aspects of schedule milestone dates, scope, meetings, quality assurance checks and deliverables for a project.

Principal-level involvement from conceptual design through closeout helps assure that the project is receiving the attention that it needs and that the project goals are achieved.

Our focus, as a trusted partner with the City, is to maintain transparent and continuous communication - including frequent project update reports - throughout all phases of a project. As the need arises, SGH Architects has the capability to implement proven management techniques to expedite schedule, through pull scheduling techniques with the construction team, and identification of critical processes that can be delivered.

Efficient work planning through the design phases is not enough to help maintain and achieve schedule goals. Project Management strength, particularly during the construction phase, is dependent on succinct communication, successful allocation of expertise and the use of resources to provide the level of service necessary for successful project delivery. We provide bidding assistance, field services, and construction administration processing.



Document Management/Control, Quality Control Review.

Quality Control is an internal, mandatory process the firm implements on every project. This process is also required of each of our team consultants through contractual agreements.

During the project development, mandatory and frequent coordination review meetings are held with the entire project team. These meetings are designed to identify issues early on and take corrective action to assure the plans and related documents are coordinated and have addressed all the required programmatic needs.





C. FIRM'S APPROACH (Continued)

Sustainable Design.

At SGH Architects, we strive to implement sustainable strategies in our projects. Our approach is one that takes all aspects of client "Conditions of Satisfaction" into account. Do you want to be "Green" for green sake or when it makes sense from a budget and ongoing maintenance perspective? These are opportunities we can explore during the visioning process and make informed decisions on what makes sense and what may not fit the program or budget.

Below are some achievable strategies that do not add much to the overall cost of the project, but go a long way to promote your commitment to being responsible community partners.

1. Passive Sustainable Design.

Passive strategies, such as considering sun orientation and climate when siting, and being thoughtful about window placement and operation, are used to best manage daylighting and natural ventilation, far in reducing energy requirements for the building. In certain climates, thermal mass techniques can be used to harness solar energy. In such cases, thick walls absorb heat from the sun during the day and release it into the building at night.

2. Active Sustainable Design.

We consult with mechanical and electrical engineers to implement high-efficiency electrical, plumbing, HVAC, and other systems, which are designed to have small environmental footprints.

3. Renewable Energy Systems.

Renewable energy systems, including those that harness solar and wind energy, are also great options for some buildings. These systems are often used in conjunction with passive design strategies.

4. Green Building Materials and Finishes.

When specifying steel, lumber, concrete, and finishing materials, such as carpet and furnishings, from companies that use environmentally responsible manufacturing techniques or recycled materials, we up the ante on sustainability.

5. Native Landscaping.

Landscaping choices can make a big impact in water consumption. By using trees, plants, and grasses that are native to the area, we greatly reduce irrigation needs. Landscaping can also be used as part of a passive energy strategy. By planting trees that shade the roof and windows during the hottest time of the day, solar heat gain inside the building can be reduced.

6. Stormwater Management.

When rain falls on an untouched site, the water that doesn't evaporate absorbs back into the ground, replenishing the natural water table. However, when a building is placed on the site, along with parking lots, sidewalks, access roads, and other hardscaping, rainfall behaves differently. The water runs off these surfaces and into storm drains. By implementing stormwater management strategies, such as pervious pavement that helps to reduce runoff, and retention ponds that capture runoff, and slowly release water back into the ground, the negative environmental impact of buildings can be reduced.

Achievable Sustainability

Designing a sustainable project should not be a daunting prospect. SGH Architects is an experienced architectural firm will listen carefully to your needs and concerns and will offer the sustainable architecture strategies that best meet your goals and budget.



Sustainable Sites



Water Efficiency



Indoor Environmental Quality



Materials & Resources



Awareness & Education



Innovation & Design



Energy & Atmosphere



D. FIRM PROFILE

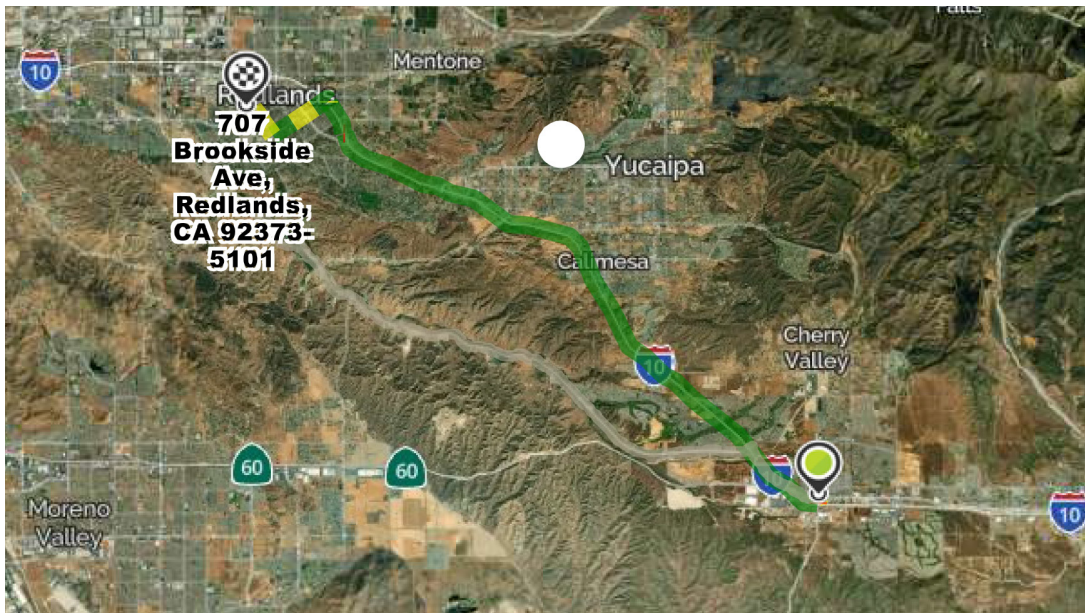
Profile

SGH Architects is a Redlands, California-based architectural design firm officially established in January of 2018. The firm is a registered California S. Corporation specializing in professional services for civic, workplace, commercial, and educational design.

Office Location:

707 Brookside Avenue
Redlands, CA 92399
(909) 375-3030

Principal | Partners Michael Stephens, AIA, NCARB and Scott Griffith, AIA share a mutual vision of exceptional service, integrity, accountability, and a passion for design. This leadership Team brings wide-ranging experience to the firm from the owner, contractor, and consultant perspective and an extensive portfolio of design expertise. Our collective design experience spans more than 60 years and allows us to offer comprehensive architectural services to the City of Beaumont.

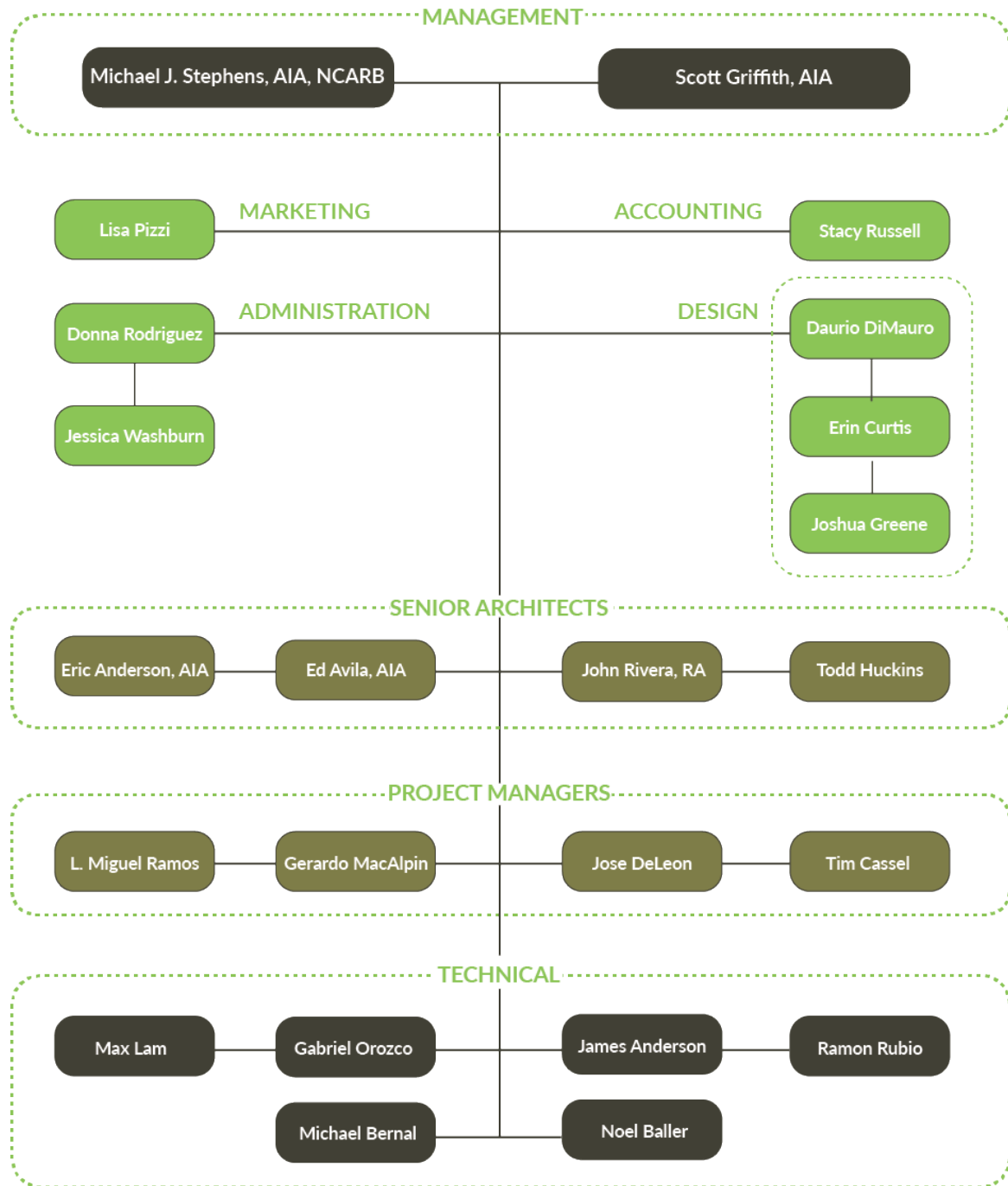


SGH Architects' office is located at 707 Brookside Avenue in Redlands, California. The distance to Beaumont City Hall is 16.6 miles.



D. FIRM PROFILE (Continued) Organizational Chart

SGH Architects has a staff of twenty-three full-time employees. Michael Stephens, AIA, NCARB will serve as Principal-in-Charge. Scott Griffith, AIA will serve as Project Director, Gerardo Mac Alpin will serve as Project Manager, Dario DiMauro will serve as Project Designer, and Erin Curtis will manage the Interior Design. Additional staffing requirements will be assigned as needed.



E. RESUMES OF CONSULTANT TEAM



9931 Muirlands Boulevard
Irvine, CA 92618
P: 949.462.3200
E: KWestervelt@knastructural.com
W: <https://knastructural.com/>

Established in 1996, KNA is an award-winning, full-service structural engineering firm, that delivers innovative solutions to the educational, civic, healthcare and commercial industries.



Kevin Westervelt, PE, SE
Principal

Role
Structural Engineering
Education
California Polytechnic State University, San Luis Obispo, CA
B.S. Architectural Engineering, 2004
Licensed Structural Engineer:
California No. 5681, Oregon No. 89054,
Washington No. 51390
Licensed Civil Engineer: California No. 72262,
Washington No. 51390

Kevin Westervelt is a Principal of KNA Structural Engineers and has over 16 years of structural engineering experience in both the design and construction oversight of California Civic & Education building projects.

His expertise includes the Design and Construction Administration for buildings of all types with special emphasis on government facilities such as fire stations and other similar structures.

Mr. Westervelt is an experienced Project Manager, and is knowledgeable in all areas of structural analysis, design, and detailing with particular knowledge in public facilities.

Selected Relevant Project Experience

Riverside County Fire Department

- Lake Matthews Fire Station No. 4
- Rancho California Fire Station No. 73

Western Municipal Water District

- Operations Center - El Sobrante Road
City of Carson
- Carson Park Community Center

Coachella Valley Unified School District

- District Community Education Complex

Desert Sands Unified School District

- La Quinta High School Expansion

Upland Unified School District

- Upland High School Gymnasium

San Jacinto Unified School District

- Megan Cope Elementary School

Poway Unified School District

- Black Mountain Middle School

County of San Diego and Lemon Grove Unified School District

- Lemon Grove Academy Library

Palm Springs Unified School District

- Agua Caliente Elementary School

E. RESUMES OF CONSULTANT TEAM (Continued)



DCGA ENGINEERS

4750 East Ontario Mills Parkway
Ontario, CA 91764
P: 909.987.0017
E: kris.gossain@dcgaengineers.com
W: <https://www.dcgengineers.com>

DCGA Engineers is comprised of a team of highly skilled engineers and designers with a total combined experience of over 250 years. Our specializations include HVAC, Plumbing, Piping, Fire Suppression, Power, Telecommunications, Lighting, Data, Fire Alarm, Standby Emergency Power Systems, Feasibility Studies and Building Energy Analysis. We also utilize our expertise in construction administration to ensure projects are constructed successfully with minimal contract or schedule changes.

Firm Civic Experience Includes:

Cucamonga Valley Water District

- Frontier Project

City of Fontana

- Fontana Senior Center

County of Riverside

- Desert Hot Springs Family Care Center
- Woodcrest Library

San Bernardino County

- Juvenile Courthouse

City of Riverside

- Lincoln Police Department Shooting Range

City of Ontario

- Ontario Council Chambers Remodel
- Ontario Library Remodel
- Ontario Public Works Remodel

Town of Apple Valley

- Apple Valley Town Hall
- Apple Valley Police

Kris Gossain, P.E. Senior Mechanical Engineer

Role

Mechanical, Plumbing, Fire Protection Engineering

Education

Bachelor of Science, Mechanical Engineering

Bachelor of Arts, Economics from India

Certificates in Construction Management and Business Management from University of Riverside Extension, Riverside

Licensed Mechanical Engineer in the State of California since 1985.

License No. #M 23689

Mr. Gossain has over 30 years of experience in designing HVAC, Plumbing, Fire Protection systems for commercial, industrial, hospital, and educational institutions. He also has 10 years' experience in Construction Management and Commissioning experience for hospitals, pharmaceutical buildings, nursing homes, universities, office buildings, industrial buildings and semiconductor industries. He has also worked as a Forensics Engineer for Mechanical and Plumbing Systems and performed forensics analysis of construction defects for various legal cases.

Selected Relevant Project Experience

County of San Bernardino

- New Facility, San Bernardino County Courthouse
- New Two Story Addition, Fontana Courthouse
- Rialto 911 Call Center and Dispatch
- New Data Center Addition

City of Rancho Cucamonga, CA

- Renovation and Remodel of Rancho Cucamonga Fire Station and Training Facility

San Manual Band of Mission Indians

- New San Manual Fire Station

County of Riverside

- Palm Desert 911 Dispatch
- Blythe Sherriff Station, Generator Replacement





E. RESUMES OF CONSULTANT TEAM (Continued)



DCGA ENGINEERS

4750 East Ontario Mills Parkway
Ontario, CA 91764
P: 909.987.0017
E: keith.williams@dcgaengineers.com
W: <https://www.dcgengineers.com>

DCGA Engineers is comprised of a team of highly skilled engineers and designers with a total combined experience of over 250 years. Our specializations include HVAC, Plumbing, Piping, Fire Suppression, Power, Telecommunications, Lighting, Data, Fire Alarm, Standby Emergency Power Systems, Feasibility Studies and Building Energy Analysis. We also utilize our expertise in construction administration to ensure projects are constructed successfully with minimal contract or schedule changes.

Firm Civic Experience Includes:

Cucamonga Valley Water District

- Frontier Project

City of Fontana

- Fontana Senior Center

County of Riverside

- Desert Hot Springs Family Care Center
- Woodcrest Library

San Bernardino County

- Juvenile Courthouse

City of Riverside

- Lincoln Police Department Shooting Range

City of Ontario

- Ontario Council Chambers Remodel
- Ontario Library Remodel
- Ontario Public Works Remodel

Town of Apple Valley

- Apple Valley Town Hall
- Apple Valley Police

Keith A. Williams
Principal

Role

Electrical Engineering

Education

San Bernardino Valley College

Crafton Hills College

N.E.C. Grounding & Bonding

Professional Associations

Illumination Engineers Society (IES)

National Fire Protection Association (NFPA)

California State Fire Marshal Code Development Committee for Senate Bill 575

Mr. Williams has over 30 years' experience in the design, supervision and construction administration of electrical systems for educational, institutional, and commercial/civic projects, 17 years of the experience has been with DCGA Engineers. His involvement begins with initial scope and system definition and continues through design, construction observation and start-up.

Mr. Williams is experienced in the design, specification and administration of lighting, power, telecommunications, fire alarm, security, multi-media, data networking, controls and Title 24 energy compliance documentation.

Selected Relevant Project Experience

County of San Bernardino

- New Facility, San Bernardino County Courthouse
- New Two Story Addition, Fontana Courthouse
- Rialto 911 Call Center and Dispatch
- New Data Center Addition

City of Rancho Cucamonga, CA

- Renovation and Remodel of Rancho Cucamonga Fire Station and Training Facility

San Manual Band of Mission Indians

- New San Manual Fire Station

County of Riverside

- Palm Desert 911 Dispatch
- Blythe Sherriff Station, Generator Replacement

Arrowhead Regional Medical Center

- 800MHz Tower Project, Elephant Mountain

E. RESUMES OF CONSULTANT TEAM (Continued)



678 North Lemon Hill Trail
Orange, CA 92869
P: 949.280.8205
E: JHelekar@
HLConstructionManagement.com

HL Construction Management is a premier estimating firm, providing preconstruction services for both the private and public sectors.

Our Mission is to help our clients maximize their success by providing expertise in cost management, scheduling, change order negotiation, life cycle analysis and sustainable design.

We do our due diligence for every client to offer a customized experience designed to achieve their goals. We have successfully fulfilled this mission since our company was founded in 2010.



Jay Heleker, LEED AP BD+C
Principal

Role
Construction Cost Estimating and Budgeting
Education
California State University, Long Beach

Jay brings more than 20 years of cost estimating consultancy experience with many essential services facilities, including Fire Stations, both new construction and renovation projects. He understands the core elements of design, innovation, collaboration, value engineering, and sustainability that, when successfully combined, achieve a best-value for the client. He sets a vision for the budget scope of each project, serving as a roadmap for the design Team.

As Principal of HLCM, Jay oversees a premier estimating Team that has the fundamentals to drive successful project delivery – experience, Teamwork, and communication. Jay has extensive expertise and brings valuable experience related to project costs and potential budget impact of proposed improvements. Professional Qualifications/Affiliations/Awards

Selected Relevant Project Experience

City of Buena Park

- Fire Station No. 61, New Facility

Cathedral City

- Fire Station No. 411

City of Manhattan Beach

- Fire Station No. 2

Town of Yucca Valley

- Aquatics & Recreation Center

Victor Valley Community College District

- Victor Valley College Stadium & Education Center

City of Lake Forest

- Sports Park

City of West Hollywood

- Plummer Park Courtyard

City of Mountain View

- Rengstorff Park, Parts 1 & 2

City of San Bernardino

- Facilities Condition and Needs Assessment

City of Santa Monica

- Scheduling Services

City of Tustin

- Emergency Homeless Shelter

F. RESUMES OF KEY PERSONNEL



Michael J. Stephens, AIA, NCARB
Principal | Partner

Role

Principal in Charge

Education

California State Polytechnic University, Pomona

Bachelors of Architecture Construction Engineering Technology,
Undergraduate Studies

License Number

California Licensed Architect C-26450

Michael is a veteran leader with an impressive background of projects for public clients, with over 28 years of professional and practical experience in architecture and the design and construction of public and civic facilities. His most recent involvement with the design and construction of the Packing House District project within the City of Redlands gives him unique community insight and public space understanding. His diverse experience includes projects for various organizations throughout southern California, including projects within the County of San Bernardino and Cities of Colton, Riverside, and Rialto. He has in-depth experience in construction and contract administration, as well as project development and construction management. His rare combination of technical proficiency combined with strong leadership and management skills will enable the SGH Architects team to achieve all project goals on-time and on budget.

Selected Relevant Project Experience

Valley Sanitary District

- Training and Office, Lab
Indio, CA

Esri

- Building NA, Customer Service and Tech Support
Buildings, Redlands, CA.*
- Building L Renovation, Redlands, CA.
- Building N. Redlands, CA

Property One LLC., Redlands, CA

- Packing House District - Themed Retail Center*

Packing House District Phase II, Redlands, CA.

- Starbucks Coffee Shop
- J. Riley Distillery
- Downtown Parking Structure
- 3rd Street North Retail Building
- 3rd Street South Retail Building

Lake Arrowhead Community Services District

- Corporate Yard

West Valley Water District*

- Oliver P. Roemer Water Filtration Facility, Rialto, CA

County of San Bernardino*

- West Valley Detention Facility, Courtroom Remodel,
Rancho Cucamonga, CA

City of Redlands

- Joslyn Senior Center Renovations
- Council Chambers Door Access Renovations

City of Corona*

- Corona City Hall, Corona, CA



*Project performed while with other firms

F. RESUMES OF KEY PERSONNEL (Continued)



Scott Griffith, AIA
Principal | Partner

Role

Project Director

Education

Arizona State University | Architecture Studies

Phoenix Institute of Technology | Technical Degree in Architecture

License Number

California Licensed Architect C-24897

Over Scott's 30 + year career he has been involved at many levels on Civic and Public Works projects. His project portfolio includes master-planning, new construction, expansion, modernization, and renovation projects representing more than \$100M in construction value for Cities throughout California. Civic Centers, Police and Fire stations, Corporation Yards, EOC's and City Hall renovations are just some of the projects Scott has experience with. Close attention to detail and client service have contributed to Scott's successful projects, and his strong work ethic is apparent in all he does, whether it's managing a project or interacting with clients.

Selected Relevant Project Experience

City of Redlands

- Municipal Utilities Department Office Remodel
- Development Services Department Office Rehabilitation
- Redlands Community Center Additions and Alterations
- Joslyn Senior Center Renovations
- Council Chambers Door Access Renovations

Valley Sanitary District

- Training and Office, Lab
Indio, CA

City of Fresno

- New Central District Police Substation*
- New Southeast District Police Substation*
- Master planning for the City of Fresno Corporate Yard and EOC*

Veterans Affairs

- Veterans Affairs Mental Health Facility, V.A. Medical Center, Fresno CA.*

Barstow Unified School District

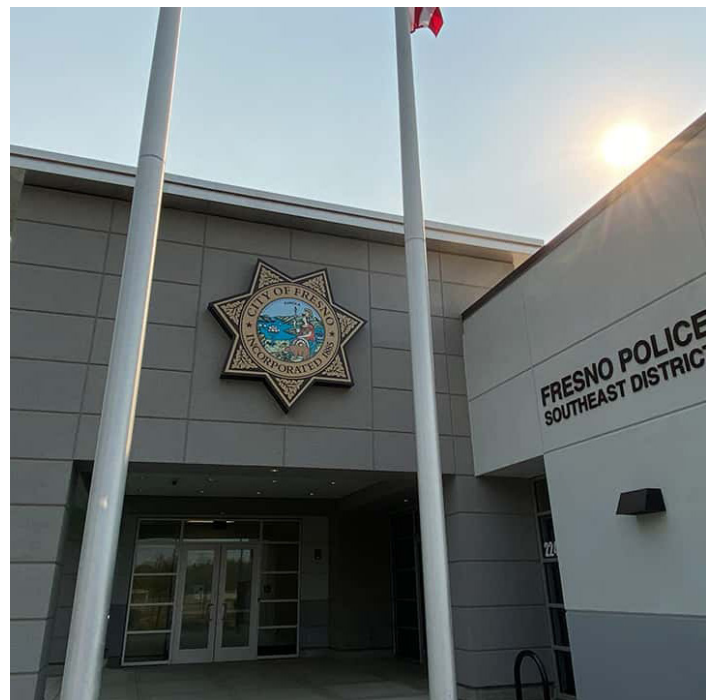
- New Central Kitchen*

City of Riverside

- New Corporate Yard and E.O.C.*

Lake Arrowhead Community Services District

- Corporate Yard



*Project performed while with other firms

F. RESUMES OF KEY PERSONNEL (Continued)



Gerardo MacAlpin
Project Manager

Role

Senior Project Manager

Education

Bachelor of Architecture, New School of Architecture, San Diego

Universidad Autonoma de Baja California, School of Architecture

Gerardo utilizes building innovation, construction efficiencies and effective communication in the execution of his projects. Gerardo has coordinated, planned, designed and constructed numerous civic and education projects throughout California. With over 30 years of experience in both California and Mexico, he has a diverse portfolio of facility types that includes instruction buildings, within varying site and architectural contexts, with a constant that each building must satisfy the needs of the client, the community, and budget.

Selected Relevant Project Experience

City of Westmorland*

- Fire Station Program and Schematic Design
- Police Station Feasibility Study and Restoration Plan

City of Los Angeles*

- Parks and Recreation Echo Park Skate Park No. 7
- Los Angeles Convention Center Expansion Design Competition

Walnut Valley Unified School District

- Diamond Bar High School, Modernization 400 Building, New Classroom/Library
- Walnut Elementary School, New Multi-purpose and Classroom

Moreno Valley Unified School District*

- Canyon Springs High School Modernization
- Canyon Springs High School New Classroom
- San Ysidro School District
- Vista Del Mar Elementary School
- Vista Del Mar Middle School

Lake Arrowhead Community Services District

- Corporate Yard

City of Redlands

- Joslyn Senior Center Renovations



*Project performed while with other firms

F. RESUMES OF KEY PERSONNEL (Continued)



Dario DiMauro
Project Designer, Associate

Role
Project Designer
Education
Universidad Nacional de Rosario - UNR | Bachelor's of Architecture

Dario comes from a long line of architects, born and raised in Argentina, art, especially architecture has been a big part of his life. His experience ranges from working for his family architectural business to coming to the United States and being a Team member for some of the largest firms in Southern California, totaling 20 years of successful architecture project experience. Dario's years of experience gives him the knowledge and understanding of the rules, codes, frame of mind, how you engage, and the skill set needed to design in the civic sector.

Selected Relevant Project Experience

Lake Arrowhead Community Services District

- Engineering Design Services for Field Operations

Barstow Community College

- Maintenance and Operations Building

Valley Sanitary District

- Customer Service and Tech Support Building, Redlands, CA

Property One LLC., Redlands, CA

- Packing House District Phase II
- Starbucks Coffee Shop
- J. Riley Distillery
- 3rd Street Downtown Parking Structure
- 3rd Street North Retail Building
- 3rd Street South Retail Building

Lake Arrowhead Community Services District

- Corporate Yard



*Project performed while with other firms

F. RESUMES OF KEY PERSONNEL (Continued)



Erin Curtis, CID, NCIDQ
Interior Designer

Role
Interior Design
Education
Seattle Pacific University
Bachelor of Arts in Interior Design
Certification
Certified Interior Designer, National Council for Interior Design Qualifications

With more than 11 years of experience in the architecture and design field, Erin brings a unique and comprehensive approach to every project. As a Certified Interior Designer, she has an instinct for creative solutions to design problems that link form and function, making spaces beautiful while addressing the human needs required of the built environment. Erin has a broad range of experience in all stages of the architectural design process, from project programming and conceptual design through construction administration. Uniquely, outside of architectural projects, her experience includes traveling throughout Europe where she worked on community development projects using art. This has helped to develop her unique community-centric design philosophy, especially in civic architectural design. Her attention to detail and problem-solving skills have aided her success in a diverse range of project types including the civic design field. These include several projects within the cities of Redlands and Riverside, as well as various public facilities throughout Southern California.

Selected Relevant Project Experience

Valley Sanitary District

- Training and Office, Lab
Indio, CA

City of Redlands

- Municipal Utilities Department Office Remodel
- Development Services Department Office Rehabilitation
- Redlands Community Center Additions and Alternations
- Redlands Community Center Interior Renovations

Lake Arrowhead Community Services District

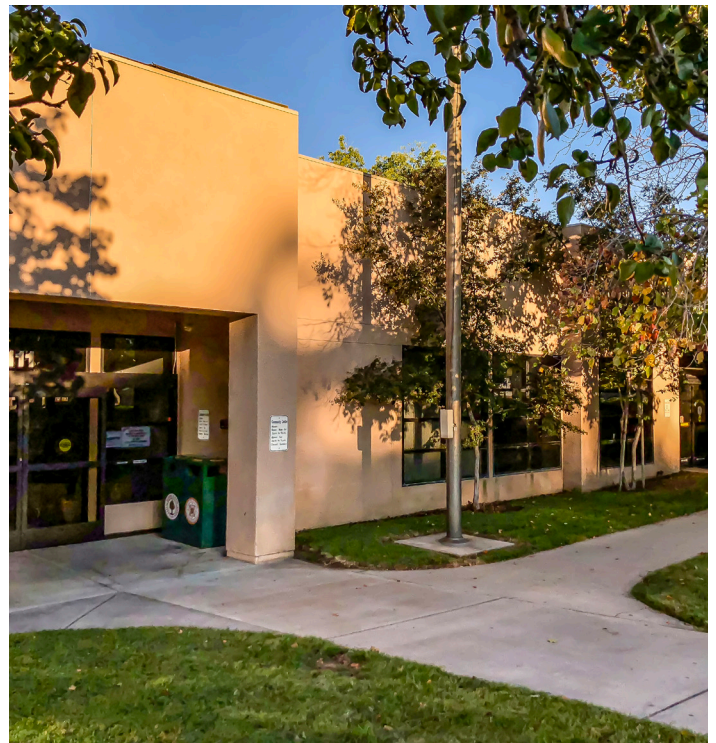
- Corporate Yard

City of Riverside*

- Various Fire Station Remodel Projects
- Corporate Yard Office Remodel
- Welding Shop Remodel
- Transformer Shop Remodel
- Arlanza Neighborhood Center
- Orange Library Remodel
- Magnolia Police Station Remodel
- Riverside Airport Remodel

Canyon Crest Towne Center*

- Ralph's Facade Improvements
- Emergency Store Front Repairs
- Arlington Property Expansion



*Project completed while with other firms



G. REFERENCES

Name of Client: Esri

Name and Title of Client's Primary Contact:

David Atchley, Facilities Manager

Contact Information for Primary Contact:

380 New York Street, Fontana, CA 92373

P: 909.793.2853 ext. 1611 **E:** datchley@esri.com

Services Provided: New Campus Building, and Building Renovations

Current Status of Projects: Ongoing, in Construction



Name of Client: City of Redlands

Name and Title of Client's Primary Contact:

Tabitha Kevari

Contact Information for Primary Contact:

35 Cajon Street, Redlands, CA 92373

P: 909.335.4755 **E:** tkevari@cityofredlands.org

Services Provided: Various Remodels / Additions

Current Status of Projects: Ongoing, in Construction



Name of Client: City of Riverside

Name and Title of Client's Primary Contact:

Chris Sauve, Building Services Project Manager

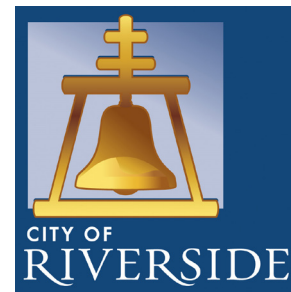
Contact Information for Primary Contact:

8095 Lincoln Avenue, Riverside, CA 92504

P: 951.351.6137 **E:** CSauve@riversideca.gov

Services Provided: Various Remodels / Additions, Site Improvements

Current Status of Projects: Ongoing, in Construction



Name of Client: City of Banning

Name and Title of Client's Primary Contact:

Arturo Vela, Senior Civil Engineer

Contact Information for Primary Contact:

99 East Ramsey Street, Banning, CA 92220

P: 951.922.3130 **E:** avela@ci.banning.ca.us

Services Provided: New Corporate Yard Warehouse

Current Status of Projects: Completed 2017



Name of Client: Valley Sanitary District

Name and Title of Client's Primary Contact:

Ronald Buchwald, P.E.

Engineering Services Manager

Contact Information for Primary Contact:

45-500 Van Buren Street, Indio, CA 92201

P: 760.238.5408 **E:** rbuchwald@valley-sanitary.org

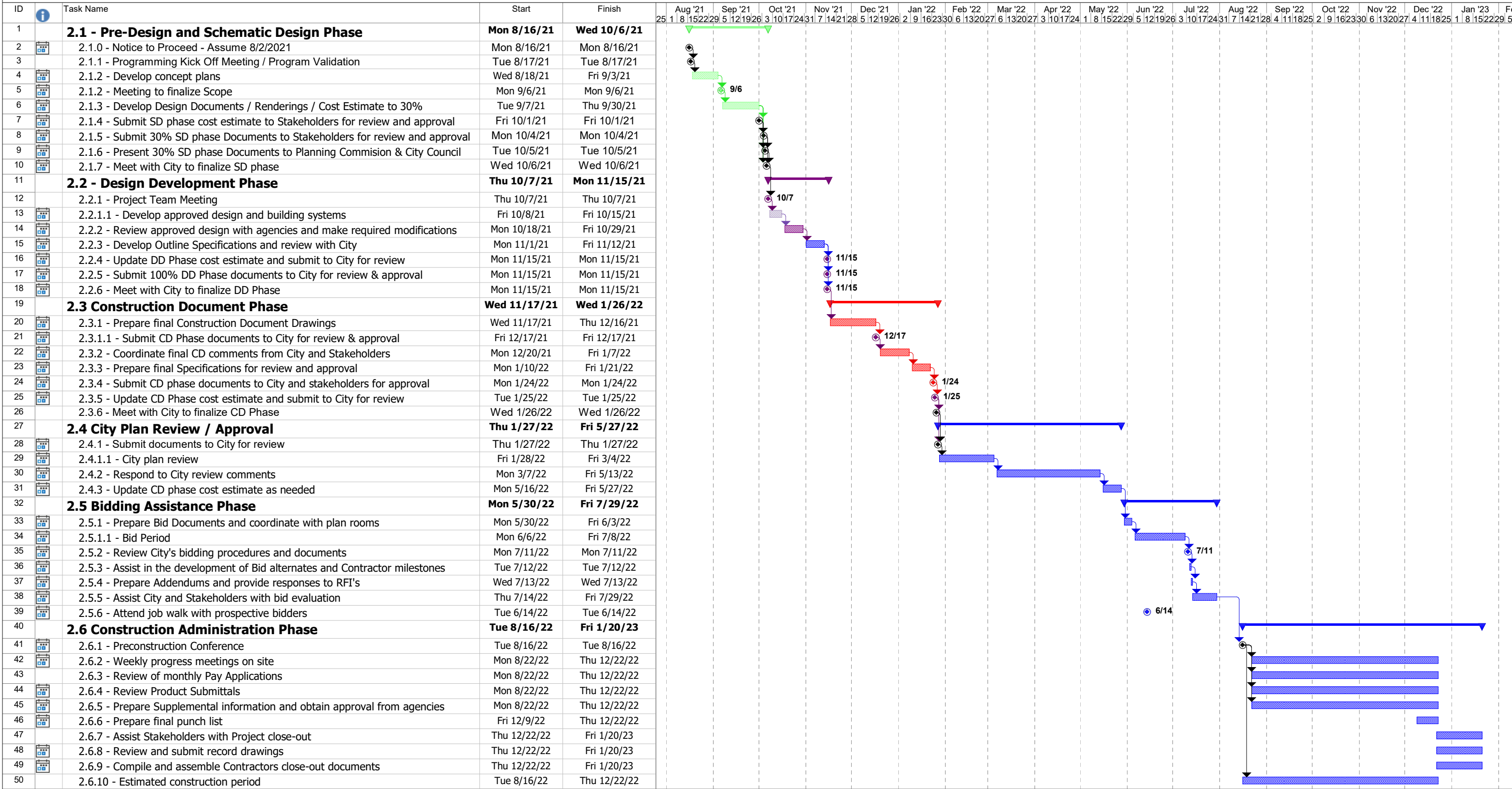
Services Provided: Training and Office, Lab

Current Status of Projects: Ongoing



City of Beaumont City Hall Renovation

Project Workplan / Schedule
July 19, 2021



SGH Architects
Project: City Hall Renovations
Mon 7/19/21

Task		Inactive Task		Inactive Summary		Manual Summary Rollup		Finish-only	
Milestone		Inactive Milestone		Manual Task		Manual Summary			
Summary		Inactive Milestone		Duration-only		Start-only			



I. COST

Sealed in a separate envelope per RFP requirements.



J. ADDITIONAL INFORMATION

Relevant Project Experience

Valley Sanitary District

- Owner's Representative and Architectural Services for New Office, Training Facility, and Laboratory

Lake Arrowhead Community Services District

- New Corporate Yard, Architectural and Engineering Design Services for Field Operations Headquarters

Property One, LLC, Redlands, CA

- Packing House District - Themed Retail Center
- 3rd Street Parking Structure
- J. Riley Distillery
- Starbucks Coffee Shop
- 3-Story Office Building

City of Redlands

- Municipal Utilities Department Office Remodel
- Development Services Department Office Rehabilitation
- Redlands Community Center Additions and Alterations
- Joslyn Senior Center Kitchen Renovations
- Council Chambers Door Access Renovations

County of San Bernardino*

- West Valley Detention Center - Courtroom Remodel

City of Corona, CA*

- Corona City Hall - New Construction

City of Fresno, CA*

- New Central District Police Substation
- New Southeast District Police Substation
- Master Planning for the City of Fresno Corporate Yard and EOC

City of Riverside*

- Various Fire Station Remodel Projects
- Corporate Yard Office Remodel
- Welding Shop Remodel
- Transformer Shop Remodel
- Arlanza Neighborhood Center
- Orange Library Remodel
- Magnolia Police Station Remodel
- Riverside Airport Remodel

West Valley Water District*

- Oliver P. Roemer Water Filtration Facility



*Project completed while with other firms

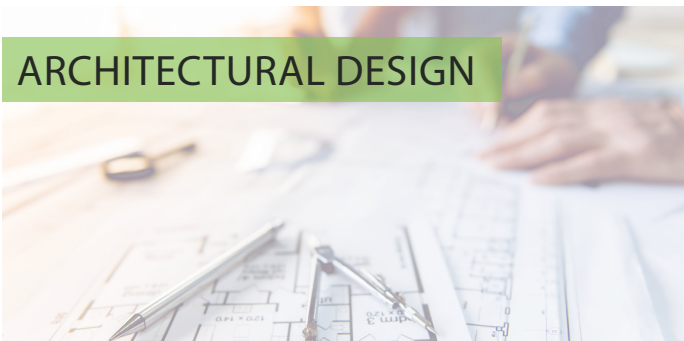


J. ADDITIONAL INFORMATION (Continued) Firm's Services

Our practice was founded on the keen understanding of the importance of integrated and interdisciplinary design, utilizing a qualified team of professionals to address building design and planning needs. We are a team of licensed architects, project managers, designers, and skilled professionals who work together to create forward-thinking designs and experiences.

We offer various in-house services to provide a more cohesive vision and ensure an integrated solution.

- Building and Site Accessibility Studies (ADA)
- Building Information Modeling (BIM)
- Code Compliance Review
- Furnishings and Equipment Coordination
- Programming, Program Confirmation, and Integrated Space Planning Needs Assessment, Feasibility Studies
- Project Phasing Studies
- Project Administration and Management
- Building and Site Assessment



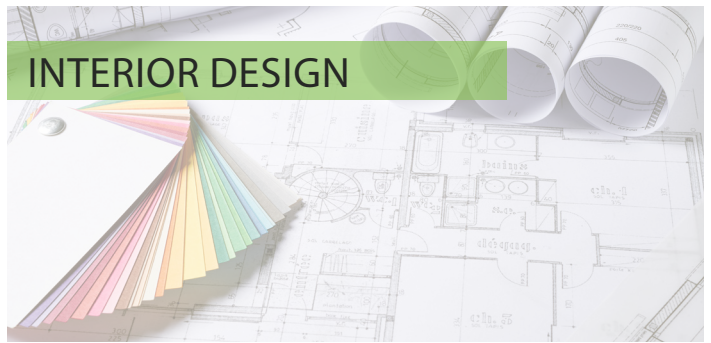
Architecture is the opportunity to creatively invoke emotion through design solutions, practical material use & detailing, and sustainably enhance the built environment to better serve the goals and aspirations of its users and those who will experience it.



An effective master plan is an evolution of shared institutional knowledge, from stakeholder engagement, analysis of relevant land use data, test-fit of economic realities, and the opportunities that culminate from educational master plan objectives, our solutions are adaptable and responsible.



Through stakeholder interaction and an understanding of the needs and goals, our collaboration puts the pieces together that strategically identify and solve the project's needs and spaces. Our efforts performed early in the design process ensures that design solutions are objectively based on the "right" and relevant data, which improves efficiencies and becomes a driving principle throughout project development.



Our interior design practice seeks to create bold, intelligent, practical, and functional spaces. We seek to integrate a collaborative, immersive and holistic approach to add value to our design process and final user experience.

K. INSURANCE REQUIREMENTS



CERTIFICATE OF LIABILITY INSURANCE

MCGRAWM

DATE (MM/DD/YYYY)
10/13/2020

THIS CERTIFICATE IS ISSUED AS A MATTER OF INFORMATION ONLY AND CONFERS NO RIGHTS UPON THE CERTIFICATE HOLDER. THIS CERTIFICATE DOES NOT AFFIRMATIVELY OR NEGATIVELY AMEND, EXTEND OR ALTER THE COVERAGE AFFORDED BY THE POLICIES BELOW. THIS CERTIFICATE OF INSURANCE DOES NOT CONSTITUTE A CONTRACT BETWEEN THE ISSUING INSURER(S), AUTHORIZED REPRESENTATIVE OR PRODUCER, AND THE CERTIFICATE HOLDER.

IMPORTANT: If the certificate holder is an ADDITIONAL INSURED, the policy(ies) must have ADDITIONAL INSURED provisions or be endorsed. If SUBROGATION IS WAIVED, subject to the terms and conditions of the policy, certain policies may require an endorsement. A statement on this certificate does not confer rights to the certificate holder in lieu of such endorsement(s).

PRODUCER License # 0E67768 IOA Insurance Services 4370 La Jolla Village Drive Suite 600 San Diego, CA 92122	CONTACT NAME: Erica Wilson	
	PHONE (A/C, No, Ext): (858) 754-0063 50233 FAX (A/C, No): (619) 574-6288 E-MAIL ADDRESS: Erica.Wilson@ioausa.com	
INSURED SGH Architects Inc. 707 Brookside Avenue Redlands, CA 92373	INSURER(S) AFFORDING COVERAGE INSURER A : RLI Insurance Company	NAIC # 13056
	INSURER B : Hudson Insurance Company	25054
	INSURER C :	
	INSURER D :	
	INSURER E :	
	INSURER F :	

COVERAGES CERTIFICATE NUMBER: REVISION NUMBER:

THIS IS TO CERTIFY THAT THE POLICIES OF INSURANCE LISTED BELOW HAVE BEEN ISSUED TO THE INSURED NAMED ABOVE FOR THE POLICY PERIOD INDICATED. NOTWITHSTANDING ANY REQUIREMENT, TERM OR CONDITION OF ANY CONTRACT OR OTHER DOCUMENT WITH RESPECT TO WHICH THIS CERTIFICATE MAY BE ISSUED OR MAY PERTAIN, THE INSURANCE AFFORDED BY THE POLICIES DESCRIBED HEREIN IS SUBJECT TO ALL THE TERMS, EXCLUSIONS AND CONDITIONS OF SUCH POLICIES. LIMITS SHOWN MAY HAVE BEEN REDUCED BY PAID CLAIMS.

INSR LTR	TYPE OF INSURANCE	ADDL INSD	SUBR WVD	POLICY NUMBER	POLICY EFF (MM/DD/YYYY)	POLICY EXP (MM/DD/YYYY)	LIMITS
A	<input checked="" type="checkbox"/> COMMERCIAL GENERAL LIABILITY <input type="checkbox"/> CLAIMS-MADE <input checked="" type="checkbox"/> OCCUR <input checked="" type="checkbox"/> Contractual Liab. <input checked="" type="checkbox"/> Sev. of Interests GEN'L AGGREGATE LIMIT APPLIES PER: <input type="checkbox"/> POLICY <input checked="" type="checkbox"/> PRO-JECT <input type="checkbox"/> LOC OTHER:			PSB0005744	10/1/2020	10/1/2021	EACH OCCURRENCE \$ 1,000,000 DAMAGE TO RENTED PREMISES (Ea occurrence) \$ 1,000,000 MED EXP (Any one person) \$ 10,000 PERSONAL & ADV INJURY \$ 1,000,000 GENERAL AGGREGATE \$ 2,000,000 PRODUCTS - COMP/OP AGG \$ 2,000,000 Deductible \$ 0 COMBINED SINGLE LIMIT (Ea accident) \$ 1,000,000 BODILY INJURY (Per person) \$ BODILY INJURY (Per accident) \$ PROPERTY DAMAGE (Per accident) \$ \$ \$
A	AUTOMOBILE LIABILITY <input checked="" type="checkbox"/> ANY AUTO OWNED AUTOS ONLY <input type="checkbox"/> SCHEDULED AUTOS <input checked="" type="checkbox"/> HIRED AUTOS ONLY Comp.: \$500 <input checked="" type="checkbox"/> NON-OWNED AUTOS ONLY Coll.: \$500			PSA0002907	10/1/2020	10/1/2021	BODILY INJURY (Per person) \$ BODILY INJURY (Per accident) \$ PROPERTY DAMAGE (Per accident) \$ \$ \$
A	<input type="checkbox"/> UMBRELLA LIAB <input checked="" type="checkbox"/> OCCUR <input checked="" type="checkbox"/> EXCESS LIAB <input type="checkbox"/> CLAIMS-MADE DED <input checked="" type="checkbox"/> RETENTION \$ 0			PSE0002526	10/1/2020	10/1/2021	EACH OCCURRENCE \$ 2,000,000 AGGREGATE \$ 2,000,000 \$ \$
A	WORKERS COMPENSATION AND EMPLOYERS' LIABILITY ANY PROPRIETOR/PARTNER/EXECUTIVE OFFICER/MEMBER EXCLUDED? (Mandatory in NH) <input type="checkbox"/> Y / N <input checked="" type="checkbox"/> N / A If yes, describe under DESCRIPTION OF OPERATIONS below			PSW0003308	10/1/2020	10/1/2021	<input checked="" type="checkbox"/> PER STATUTE <input type="checkbox"/> OTH-ER E.L. EACH ACCIDENT \$ 1,000,000 E.L. DISEASE - EA EMPLOYEE \$ 1,000,000 E.L. DISEASE - POLICY LIMIT \$ 1,000,000
B	Professional Liab.			PRB0619110827	10/15/2020	10/15/2021	Per Claim 2,000,000
B	Ded.: \$5K Per Claim			PRB0619110827	10/15/2020	10/15/2021	Aggregate 2,000,000

DESCRIPTION OF OPERATIONS / LOCATIONS / VEHICLES (ACORD 101, Additional Remarks Schedule, may be attached if more space is required)

Re: All Operations
Proof of Insurance

30 Days Notice of Cancellation with 10 Days Notice for Non-Payment of Premium in accordance with the policy provisions.

CERTIFICATE HOLDER

For Reference Only

CANCELLATION

SHOULD ANY OF THE ABOVE DESCRIBED POLICIES BE CANCELLED BEFORE THE EXPIRATION DATE THEREOF, NOTICE WILL BE DELIVERED IN ACCORDANCE WITH THE POLICY PROVISIONS.

AUTHORIZED REPRESENTATIVE
T. Kelly Howell



FOCUS | CREATE | DELIVER

707 BROOKSIDE AVENUE REDLANDS, CALIFORNIA 92373 | P: 909.375.3030 | sgharch.com