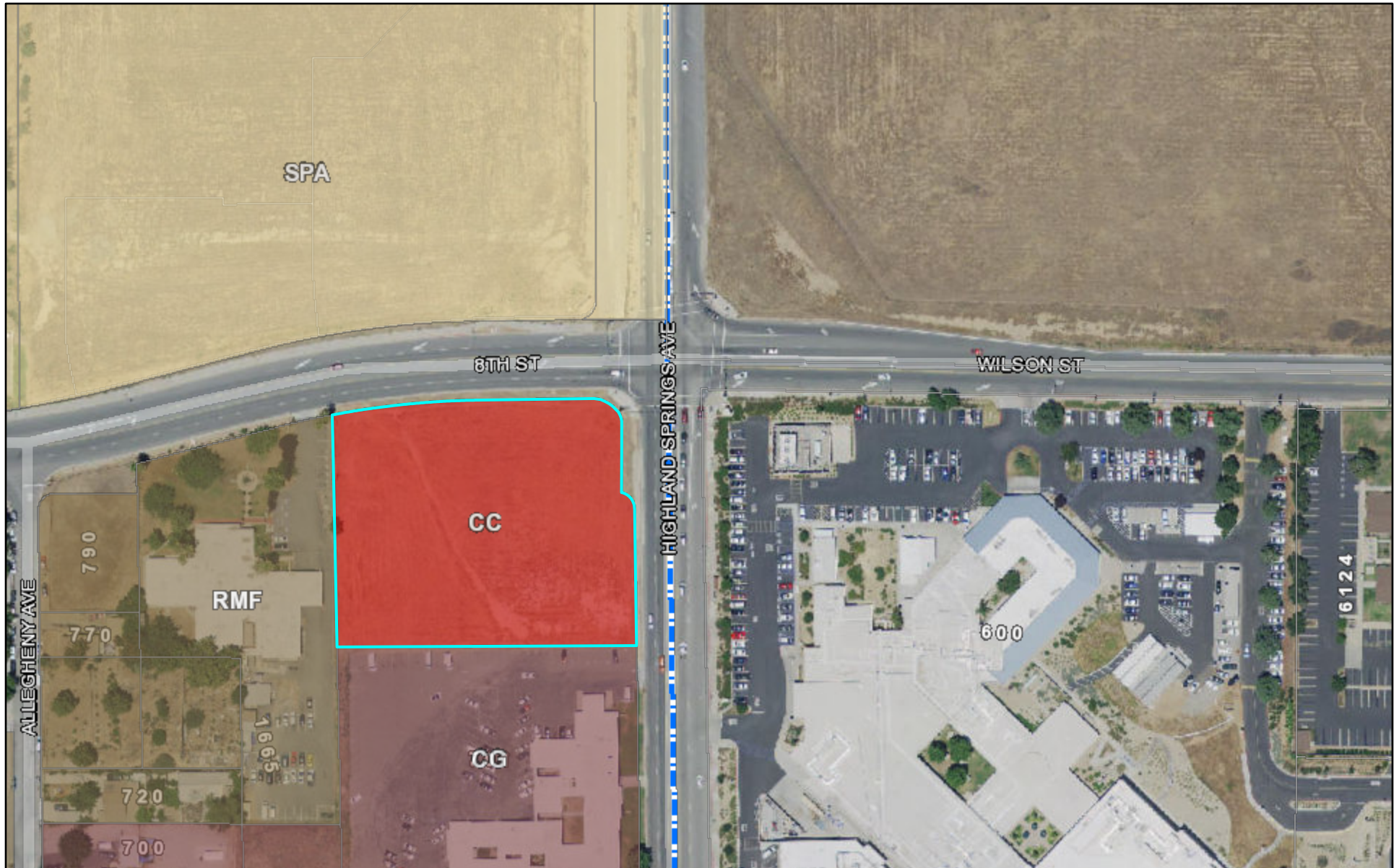


# PP2020-0276 CUP2020-0046 CUP2020-0047 PM2020-0007 Zoning



9/2/2020 11:51:58 AM

Zoning

- |                           |                    |                          |                          |
|---------------------------|--------------------|--------------------------|--------------------------|
| Rural Residential         | Specific Plan Area | Commercial Community     | Beaumont Avenue Overlay  |
| Residential Single-Family | Commercial General | Commercial Manufacturing | Mineral Resource Overlay |
| Residential Multi-Family  | Manufacturing      | Public Facilities        |                          |

1:2,257

