



Staff Report

TO: City Council

FROM: Jeff Hart, Public Works Director

DATE April 5, 2022

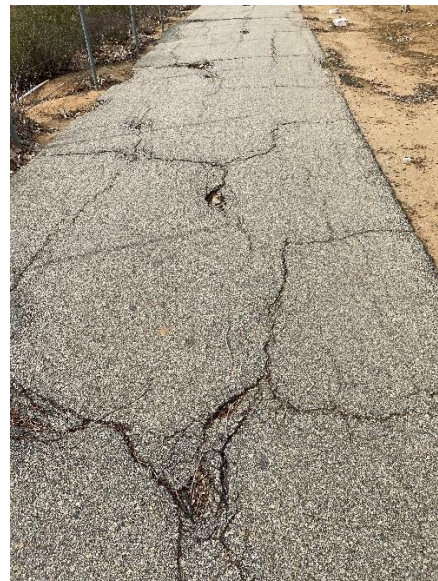
SUBJECT: Rehabilitation and Maintenance of Sundance Community Trail

Background and Analysis:

In response to recent concerns about the safety and accessibility of the Sundance Community Trail (trail), City staff assessed the condition of two specific trail locations:

1. The existing asphalt trail which traverses the retention stormwater basin immediately east of Sundance Elementary School, and
2. The existing asphalt trail located west and south of Anna Hause Elementary School, from Oak Valley Parkway to Carnation Lane.

Several portions of the trail are failing which has caused significant cracks, potholes, and unraveling. The subgrade for much of the area is also failing and will reduce the effectiveness of the ability to perform spot repairs. See following pictures clearly showing prevalent damage.





There are a few options in proceeding which City staff is seeking direction on:

1. Perform spot repairs to repair current visual defects via crack sealing, pothole repair, slurry seal, and mill and overlay depending on severity of failure. Performing repairs in this fashion will have reduced effectiveness and longevity, as well as frequent maintenance cost and City staff time to uphold. Estimated costs to perform initial repairs in approximately \$25,000;
2. Fully replace failed portions of the trail with new asphalt and compaction of subgrade, while repairing lesser damaged areas in accordance with the methods listed above (see Attachment A and B). Proceeding with this option will provide for a uniform surface and be substantially more visually aesthetic. Replacing the failures in kind adjacent to the retention spillway and overflow will have reduced longevity due to the likely presence of standing and flow-over storm water. Estimated cost of repairs is approximately \$125,000;
3. Repair entire length of both trails with 4-inch thick concrete over compacted subgrade (see Attachment 3). Replacing the trail with concrete will yield several years of sustainable, low maintenance use. Estimated cost of repairs is approximately \$500,000; or
4. Close existing trail to all users.

Fiscal Impact:

The cost to prepare this staff report is approximately \$350.

Recommended Action:

Provide staff direction on proceeding with the rehabilitation and maintenance of Sundance Community Trail.

Attachments:

- A. Sundance Elementary Basin Exhibit
- B. Anna Hause Elementary Basin Exhibit
- C. Concrete Replacement Exhibit