



I-10/Cherry Valley Interchange Project

City of Beaumont – 11/17/2020



I-10/Cherry Valley Interchange Presentation Outline

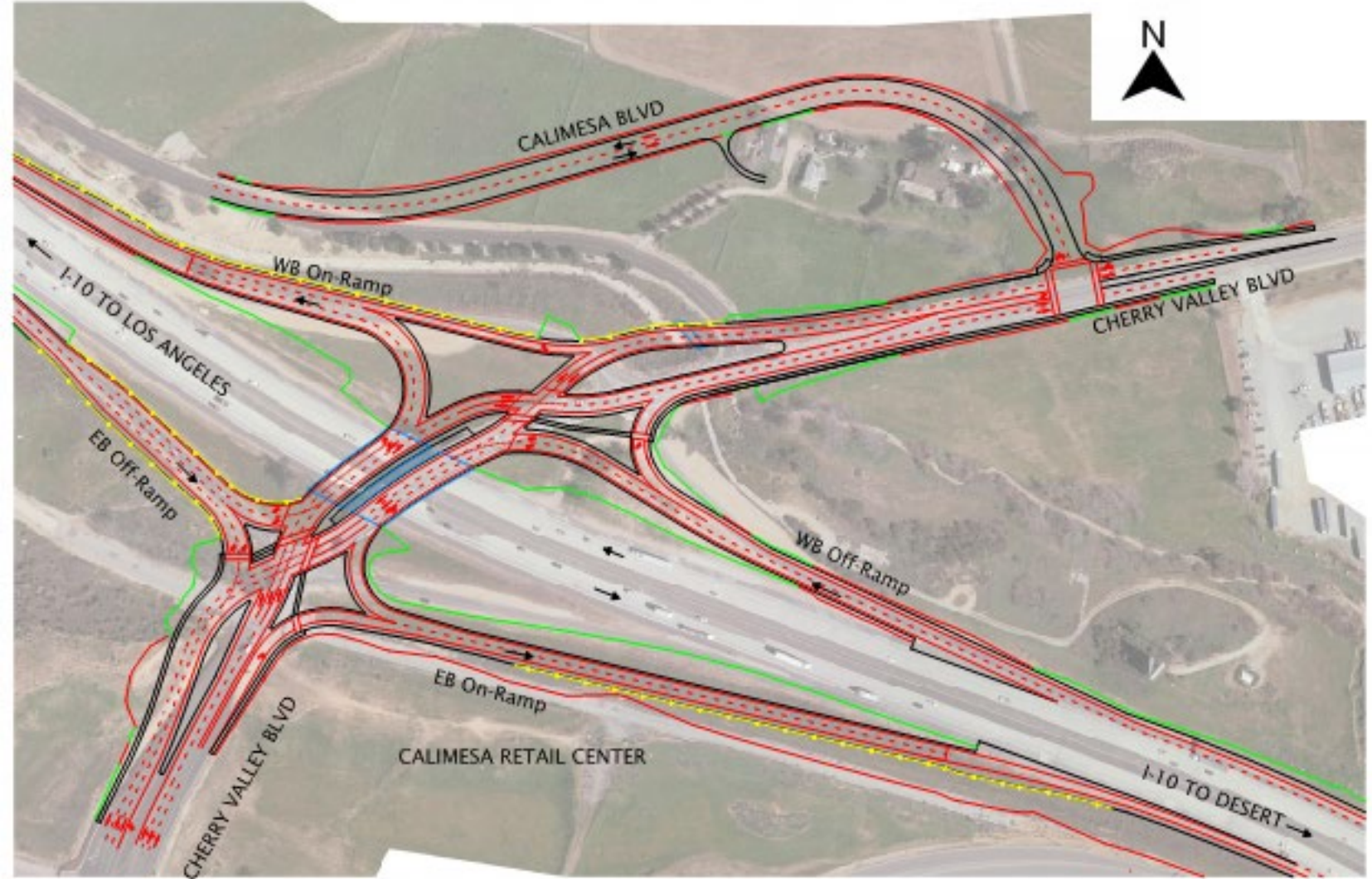
- Project Status
 - Where we are in the Caltrans delivery process
 - Two remaining build alternative options – Roundabouts have been eliminated
- Alternative Presentation
 - Alternative 3 – Diverging Diamond Interchange
 - Alternative 4 – Partial Cloverleaf
- Alternative Comparison
 - Costs, Right of Way, Driver Familiarity, Traffic Operations
- Project Schedule
 - Environmental Clearance, Design, Construction
- Providing Feedback
 - Future Opportunities
- Q&A

Project Status

- The Caltrans Process
 1. Preliminary Design Phase - Complete
 2. Environmental Phase – Now
 3. Final Design Phase
 4. Construction
- Analyzing 2 Build Alternatives
 - ~~Alternative 2 – Roundabouts~~
 - Alternative 3 - Diverging Diamond
 - Alternative 4 - Partial Cloverleaf
- Next Steps
 - Circulate Environmental Document

Alt. 3 – Diverging Diamond Interchange (DDI)

- Newer interchange type, works very well
- Accommodates pedestrians and bicycles
- Realigns Calimesa Blvd for required operational needs
- Limits driveway access along Cherry Valley

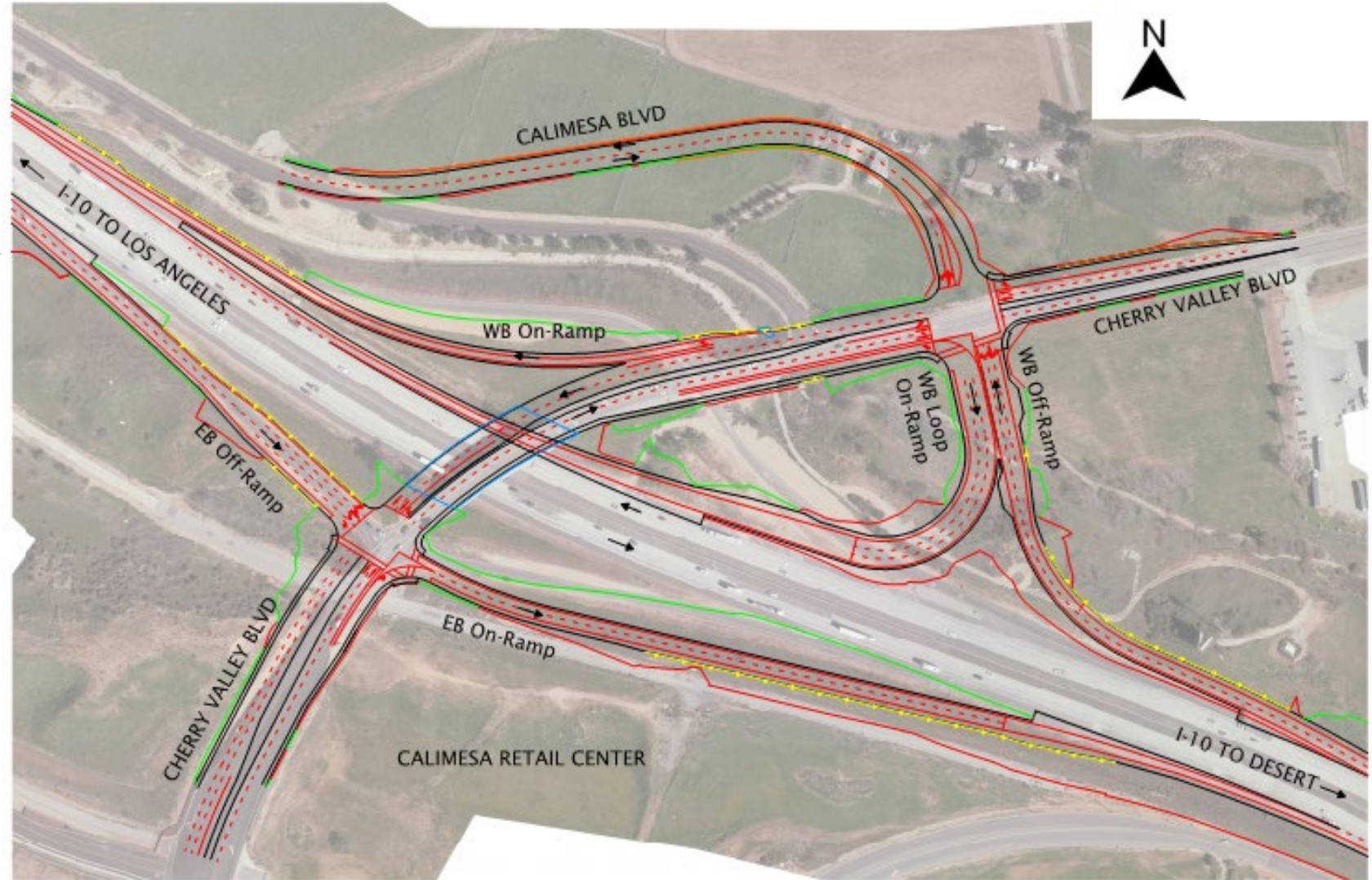


Alt. 3 – Video Simulation

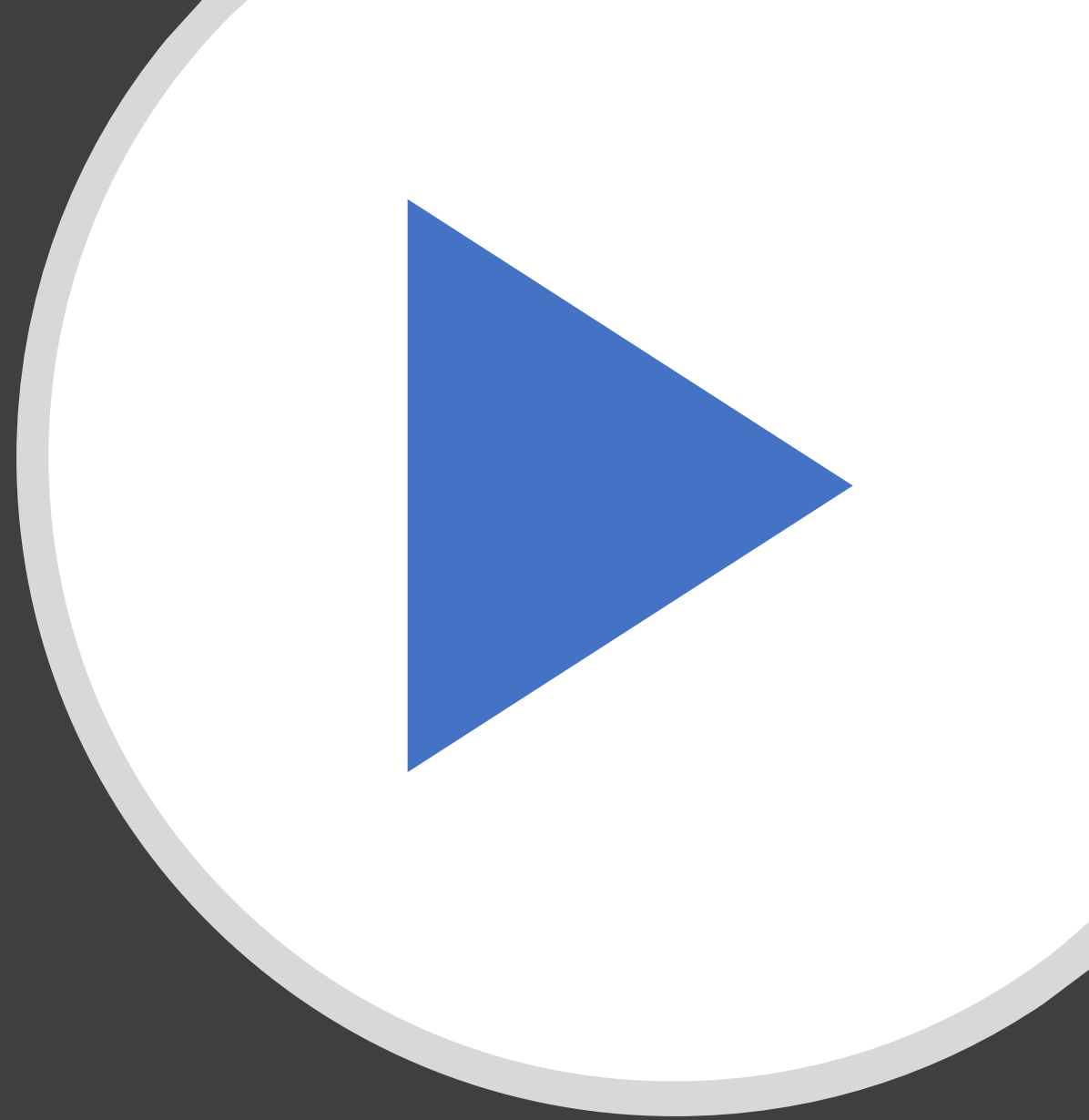


Alt. 4 – Partial Cloverleaf (Parclo)

- Traditional interchange type
- Accommodates pedestrians and bicycles
- Realigns Calimesa Blvd for required operational needs
- Limits driveway access along Cherry Valley
- Two WB On-Ramps

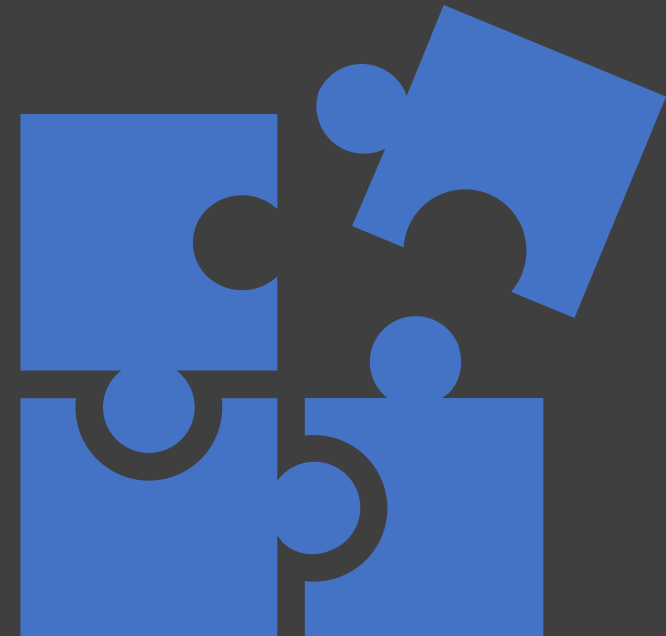


Alt. 4 – Video Simulation



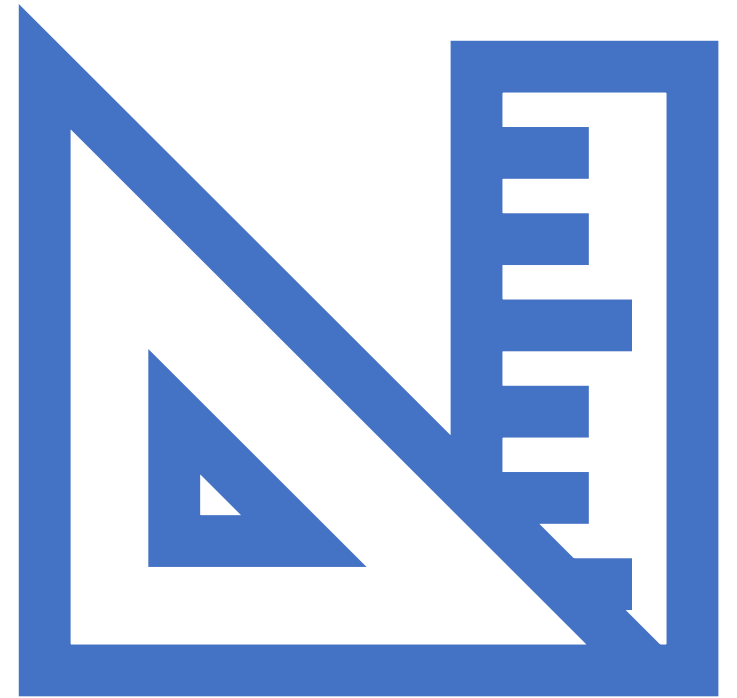
Alternative Comparison Matrix

Alternative	Construction Estimate	R/W Estimate	Driver Familiarity	Traffic Operations
3 – Diverging Diamond	\$42.6M	\$11.6M	Low	Good
4 – Partial Cloverleaf	\$38.6M	\$15.6M	High	Good



Project Schedule

- Finish Environmental Phase – Fall 2021
- Finish Final Design Phase – Summer 2023
- Construction – Pending Funding



Providing Feedback

- Future City Council Meetings
- Environmental Circulation Spring 2021
 - Public Meeting
 - Env. Document
- Future Project Meetings

Q&A

I-10/Cherry Valley Boulevard Interchange Project

