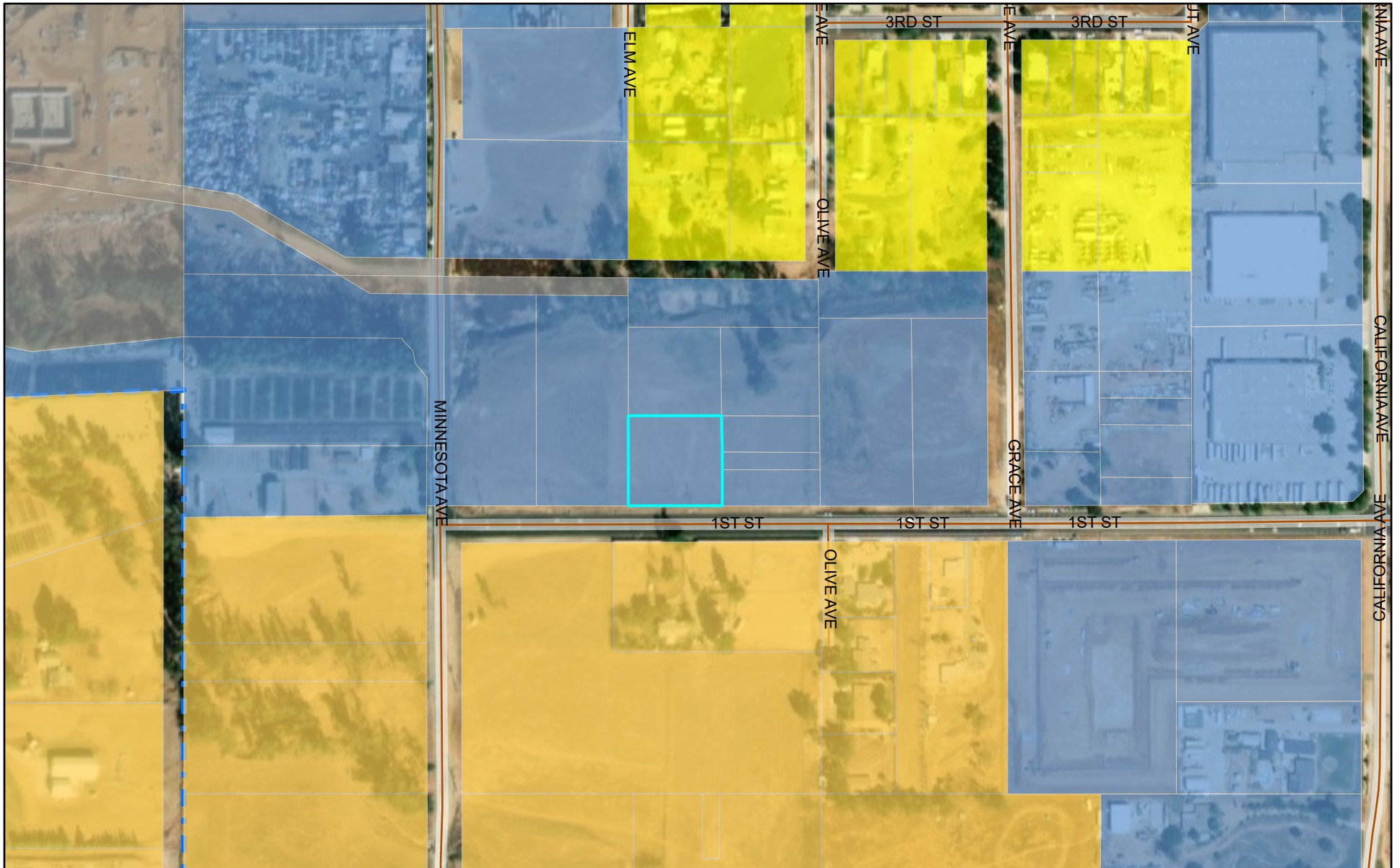


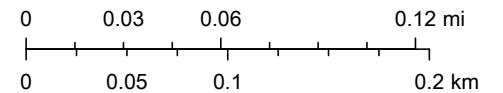
PP2020-0317 General Plan Land Use Designation



12/29/2021, 7:21:17 AM

- | | | |
|--------------------------|---------------------------|---------------|
| General Plan | Single Family Residential | City Boundary |
| Industrial | Rural Residential 40 | Street Labels |
| Traditional Neighborhood | Public Facilities | Minor Streets |

1:4,514



San Bernardino County, Maxar