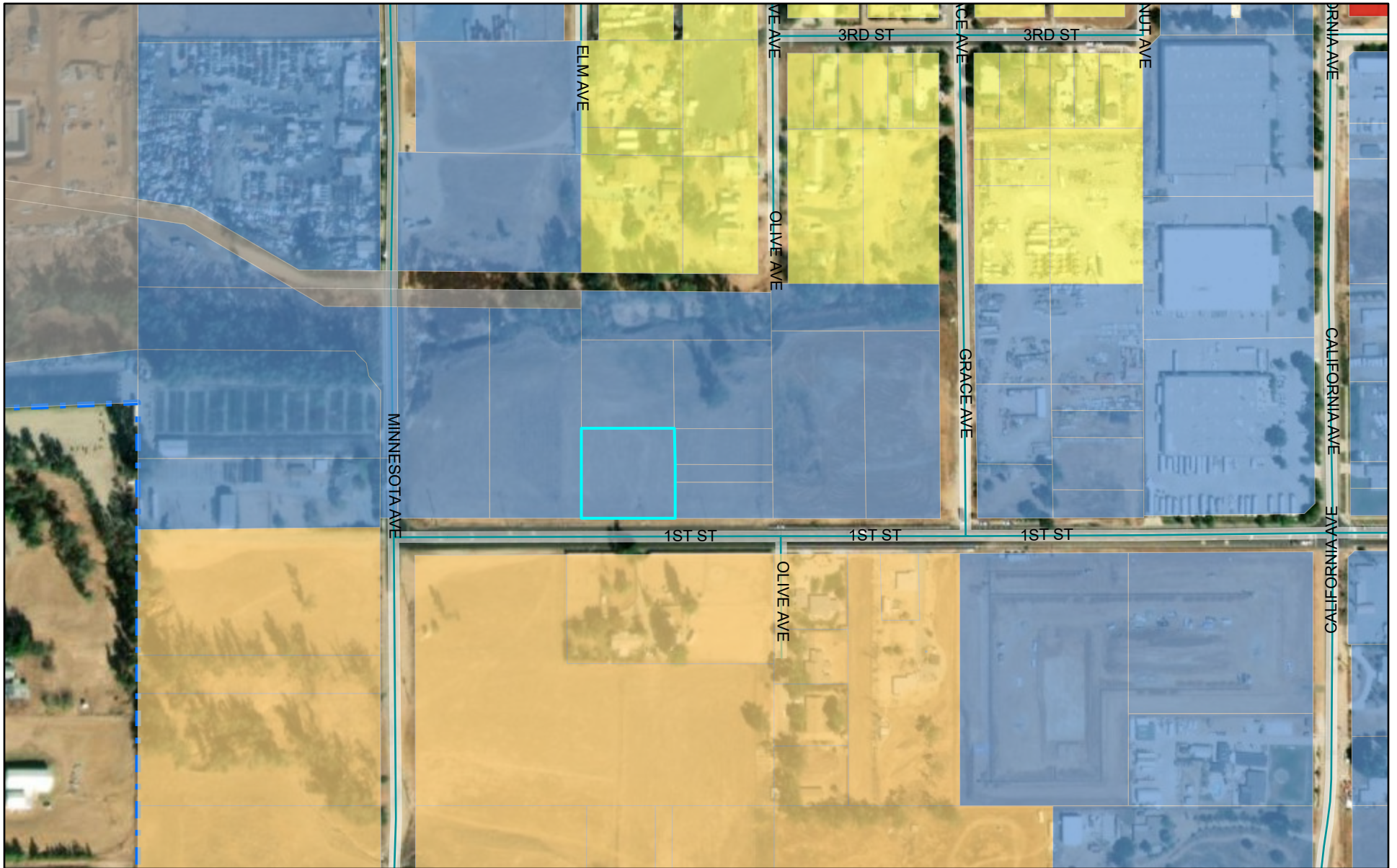


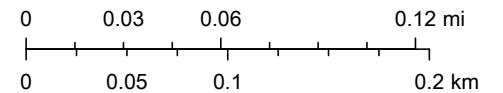
# PP2020-0317 Zoning Map



12/29/2021, 7:18:17 AM

- |                           |                                      |                   |
|---------------------------|--------------------------------------|-------------------|
| Zoning                    | Residential Traditional Neighborhood | Public Facilities |
| Residential Rural         | Community Commercial                 | City Boundary     |
| Residential Single Family | Manufacturing                        | Street Labels     |

1:4,514



San Bernardino County, Maxar