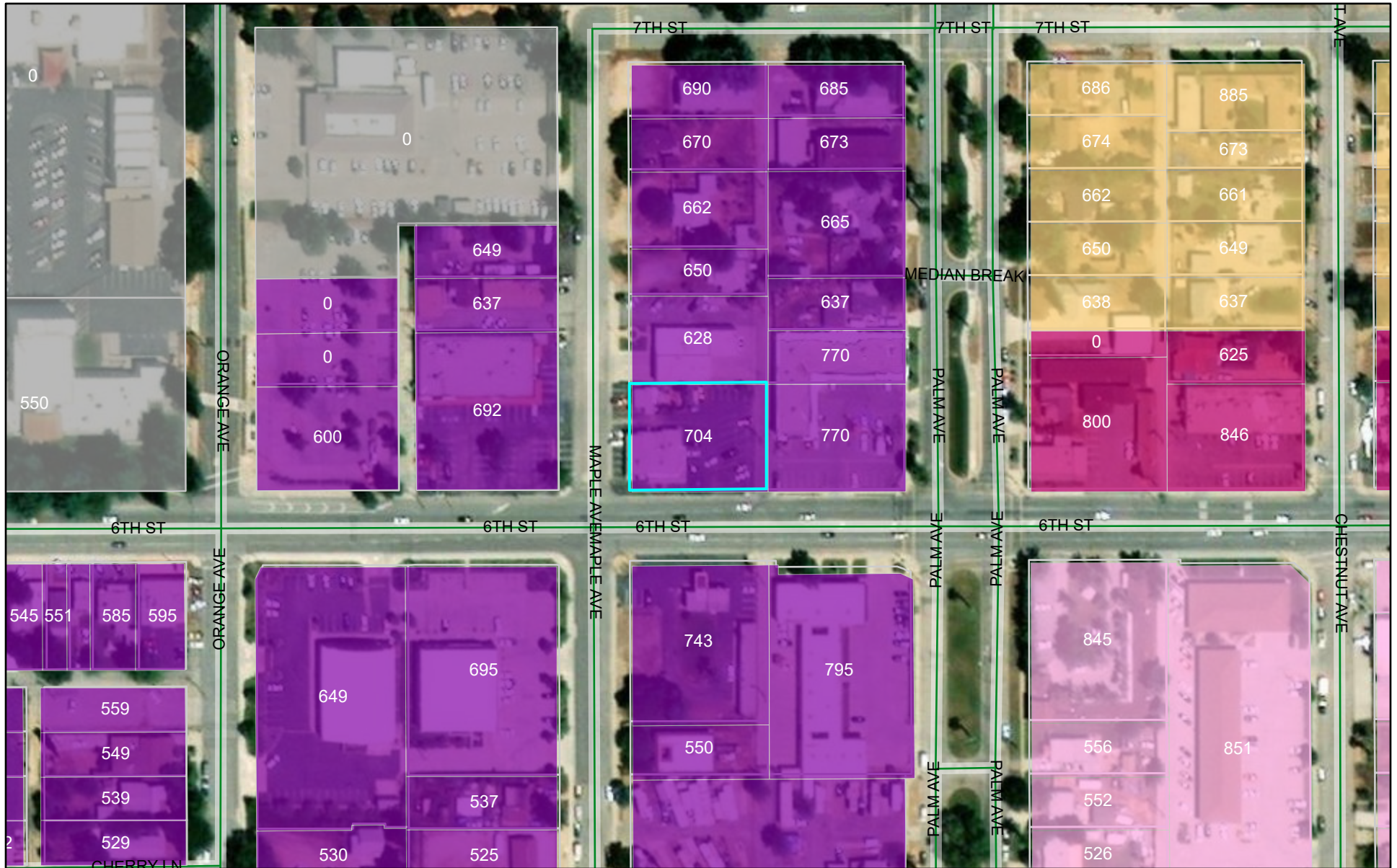
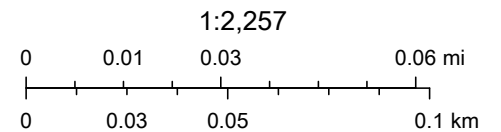


CUP2021-0060 Zoning Map



9/8/2021, 2:37:42 PM

- | | | |
|--------------------------------------|------------------------|---------------|
| Zoning | Sixth Street Mixed Use | Parcel Labels |
| Residential Traditional Neighborhood | Downtown Mixed Use | Parcels |
| Sixth Street Mixed Use - Residential | Public Facilities | Street Labels |



San Bernardino County, Maxar