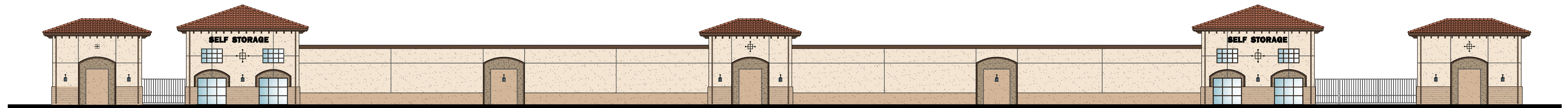


BEAUMONT SELF STORAGE EXPANSION

CALIFORNIA AVE & E. FIRST STREET
BEAUMONT, CA 92223



DIRECTORY	PROJECT DATA	VICINITY MAP	SCOPE OF WORK	SHEET INDEX												
<p>OWNER KIRK HOWARD 1648 WOODLANDS ROADS BEAUMONT, CA 92223 PH: (909)-528-1431 EMAIL: kirkghoward66@yahoo.com</p> <p>ARCHITECT JORDAN ARCHITECTS, INC. 131 CALLE IGLESIA, SUITE 100 SAN CLEMENTE, CA 92673 TELEPHONE: (949) 388-8090 FACSIMILE: (949) 388-8290 CONTACT: MARCELO QUIROGA E-MAIL: mquiroga@jordanarchitects.com</p>	<p>SITE AREA: 86,132 SQ.FT. 1.98 ACRES</p> <p>BUILDING DATA</p> <table> <tr> <td>BUILDING A - 1 STORY</td> <td>3,750 SQ.FT.</td> </tr> <tr> <td>BUILDING B - 1 STORY</td> <td>7,580 SQ.FT.</td> </tr> <tr> <td>BUILDING C - 1 STORY</td> <td>4,240 SQ.FT.</td> </tr> <tr> <td>BUILDING D - 2 STORY</td> <td>29,840 SQ.FT.</td> </tr> <tr> <td>BUILDING E - 2 STORY</td> <td>29,840 SQ.FT.</td> </tr> <tr> <td>TOTAL GROSS STORAGE</td> <td>75,250 SQ.FT.</td> </tr> </table>	BUILDING A - 1 STORY	3,750 SQ.FT.	BUILDING B - 1 STORY	7,580 SQ.FT.	BUILDING C - 1 STORY	4,240 SQ.FT.	BUILDING D - 2 STORY	29,840 SQ.FT.	BUILDING E - 2 STORY	29,840 SQ.FT.	TOTAL GROSS STORAGE	75,250 SQ.FT.		<p>DEVELOPMENT AND CONSTRUCTION OF A 75,250 SQ. FT. EXPANSION TO AN EXISTING SELF-STORAGE FACILITY LOCATED AT 190 E. FIRST ST., BEAUMONT, CA 92223. THE PROJECT INCLUDES THREE 1 STORY AND TWO 2 STORY BUILDINGS.</p>	<p>ARCHITECTURAL</p> <ul style="list-style-type: none"> A.1 TITLE SHEET A.2 PRELIMINARY SITE PLAN A.3 FIRST LEVEL FLOOR PLAN A.4 SECOND LEVEL FLOOR PLAN A.5 PRELIMINARY ELEVATIONS L.1 LANDSCAPE CONCEPT C-1 TOPOGRAPHIC CONSTRAINS SHEET C-2 PRELIMINARY GRADING SHEET C-3 STORM WATER QUALITY SHEET
BUILDING A - 1 STORY	3,750 SQ.FT.															
BUILDING B - 1 STORY	7,580 SQ.FT.															
BUILDING C - 1 STORY	4,240 SQ.FT.															
BUILDING D - 2 STORY	29,840 SQ.FT.															
BUILDING E - 2 STORY	29,840 SQ.FT.															
TOTAL GROSS STORAGE	75,250 SQ.FT.															

DR. KIRK HOWARD
BEAUMONT EXPANSION
BEAUMONT, CA

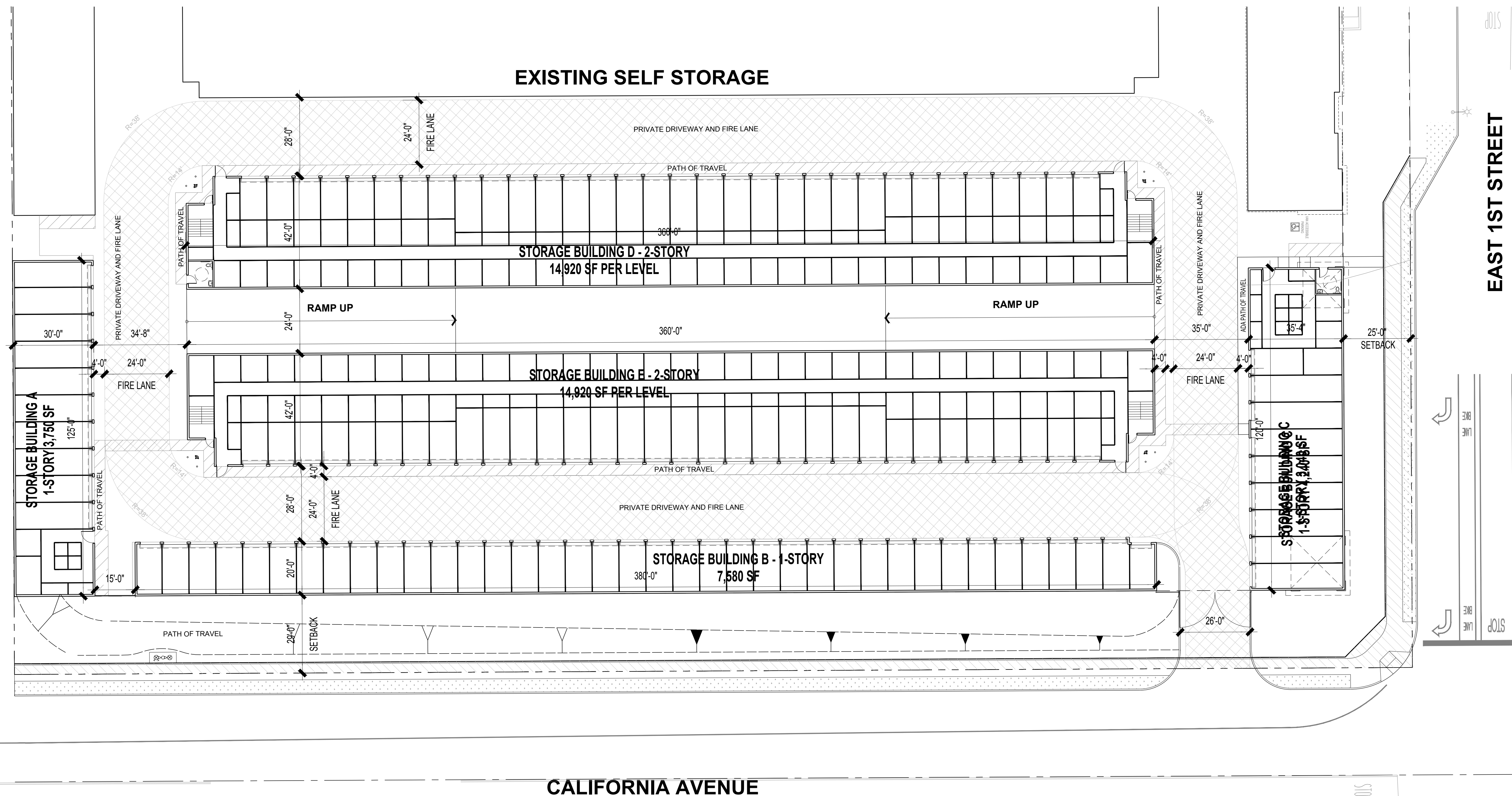
SCHEME A
TITLE SHEET



THIS DRAWING AND ITS CONTENTS ARE INSTRUMENTS OF SERVICE AND ARE THE COPYRIGHTED PROPERTY OF JORDAN ARCHITECTS, INC. THE USE IS EXPRESSLY INTENDED FOR THE PROJECT NOTED ABOVE AND MAY NOT BE REUSED OR REPRODUCED IN WHOLE OR IN PART WITHOUT THE WRITTEN PERMISSION OF JORDAN ARCHITECTS, INC. COPYRIGHT YEAR OF FIRST PUBLICATION 2020 JORDAN ARCHITECTS, INC.

JOB NUMBER: 21-928
SCALE: N.T.S.
DATE:

A.1



DR. KIRK HOWARD
BEAUMONT EXPANSION
 BEAUMONT, CA

SCHEME A
PRELIMINARY SITE PLAN

THIS DRAWING AND ITS CONTENTS ARE INSTRUMENTS OF SERVICE AND ARE THE COPYRIGHTED PROPERTY OF JORDAN ARCHITECTS, INC. THE USE IS EXPRESSLY INTENDED FOR THE PROJECT NOTED ABOVE AND MAY NOT BE REUSED OR REPRODUCED IN WHOLE OR IN PART WITHOUT THE WRITTEN PERMISSION OF JORDAN ARCHITECTS, INC. COPYRIGHT YEAR OF FIRST PUBLICATION 2020 JORDAN ARCHITECTS, INC.

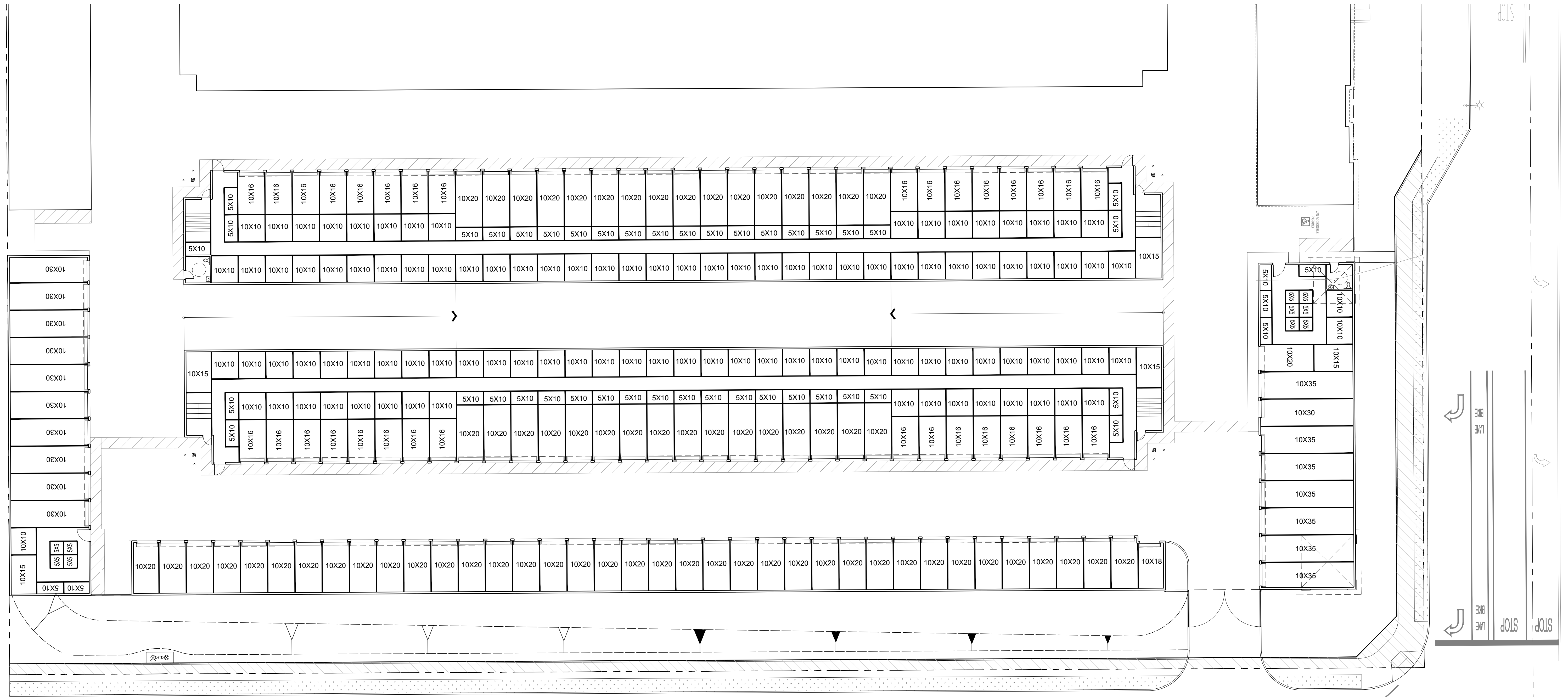
JOB NUMBER: 21-928
 SCALE: 1"=20'-0"
 DATE:

A.2

NORTH

ja

JORDAN ARCHITECTS
 131 CALLE IGLESIA, SUITE 100
 SAN CLEMENTE, CA 92672
 949.388.8090



DR. KIRK HOWARD
BEAUMONT EXPANSION
 BEAUMONT, CA

SCHEME A
PRELIMINARY FIRST LEVEL FLOOR PLAN

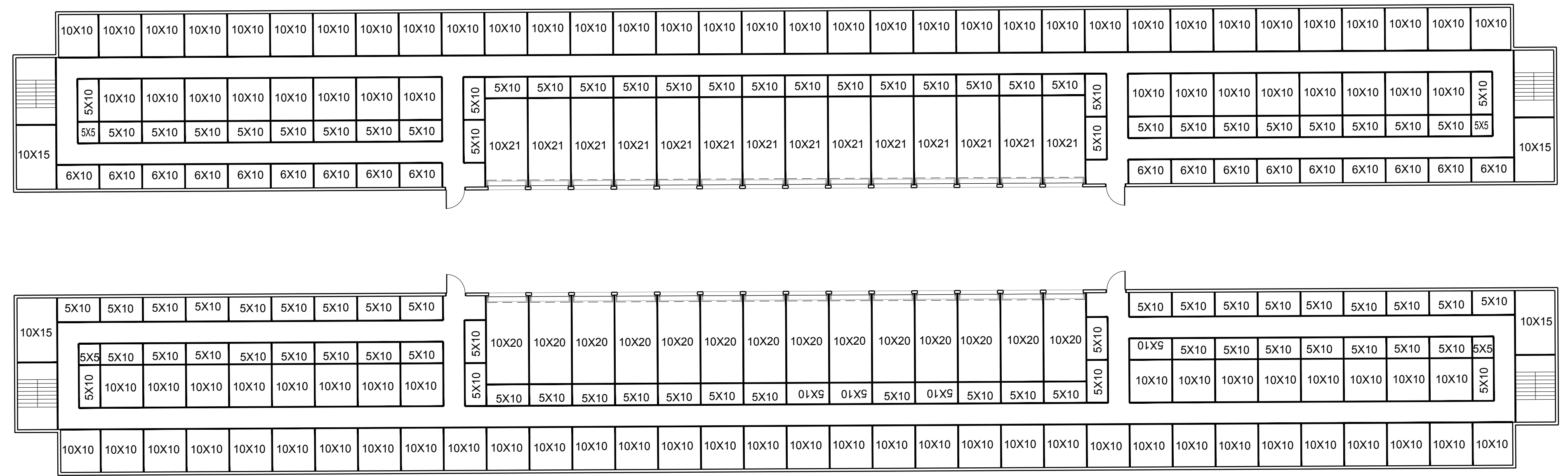
THIS DRAWING AND ITS CONTENTS ARE INSTRUMENTS OF SERVICE AND ARE THE COPYRIGHTED PROPERTY OF JORDAN ARCHITECTS, INC. THE USE IS EXPRESSLY INTENDED FOR THE PROJECT NOTED ABOVE AND MAY NOT BE REUSED OR REPRODUCED IN WHOLE OR IN PART WITHOUT THE WRITTEN PERMISSION OF JORDAN ARCHITECTS, INC. © COPYRIGHT YEAR OF FIRST PUBLICATION 2020 JORDAN ARCHITECTS, INC.

JOB NUMBER: 21-928
 SCALE: 1"=20'-0"
 DATE:

A.3

NORTH 

ja
JORDAN ARCHITECTS
 131 CALLE IGLESIA, SUITE 100
 SAN CLEMENTE, CA 92672
 949.388.8090



DR. KIRK HOWARD
BEAUMONT EXPANSION
 BEAUMONT, CA

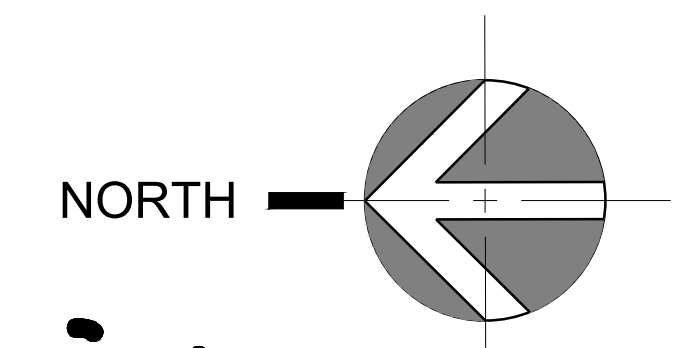
PRELIMINARY SECOND LEVEL FLOOR PLAN

SCHEME A

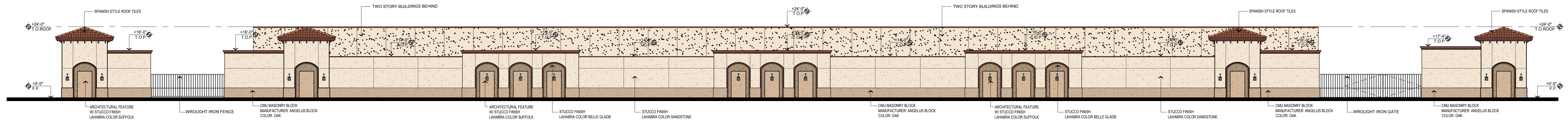
THIS DRAWING AND ITS CONTENTS ARE INSTRUMENTS OF SERVICE AND ARE THE COPYRIGHTED PROPERTY OF JORDAN ARCHITECTS, INC. THE USE IS EXPRESSLY INTENDED FOR THE PROJECT NOTED ABOVE AND MAY NOT BE REUSED OR REPRODUCED IN WHOLE OR IN PART WITHOUT THE WRITTEN PERMISSION OF JORDAN ARCHITECTS, INC. "COPYRIGHT" YEAR OF FIRST PUBLICATION 2020, JORDAN ARCHITECTS, INC.

JOB NUMBER: 21-928
 SCALE: 1"=20'-0"
 DATE:

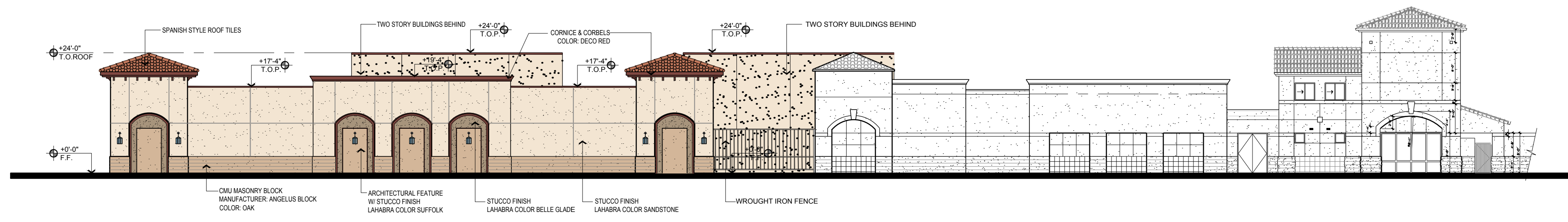
A.4



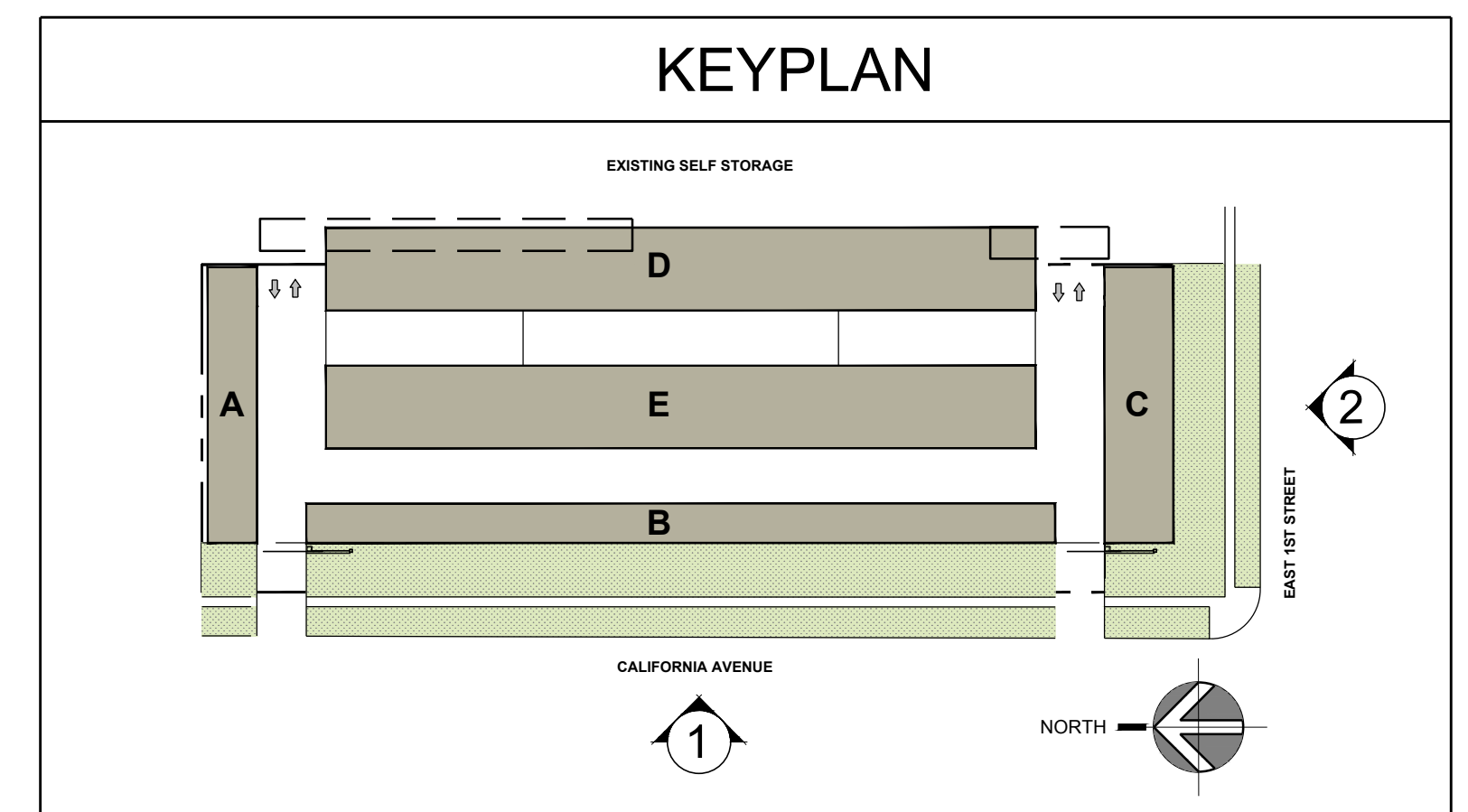
ja
JORDAN ARCHITECTS
 131 CALLE IGLESIA, SUITE 100
 SAN CLEMENTE, CA 92672
 949.388.8090



PRELIMINARY CALIFORNIA AVE. ELEVATION 1
1/16"=1'-0"



PRELIMINARY EAST FIRST ST. ELEVATION 2
1/16"=1'-0"



DR. KIRK HOWARD
BEAUMONT EXPANSION
BEAUMONT, CA

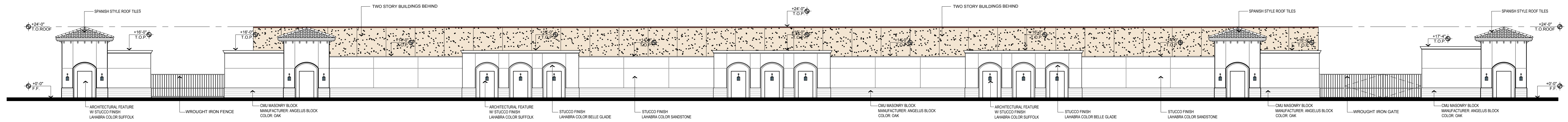
SCHEME A
PRELIMINARY ELEVATIONS

ja
JORDAN ARCHITECTS
131 CALLE IGLESIA, SUITE 100
SAN CLEMENTE, CA 92672
949.388.8090

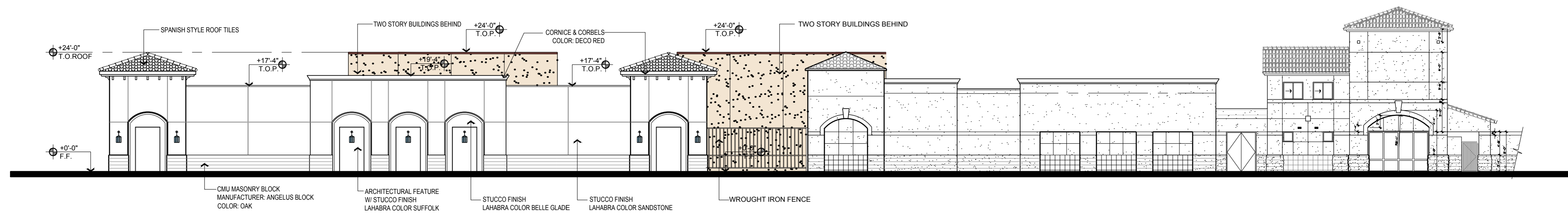
THIS DRAWING AND ITS CONTENTS ARE INSTRUMENTS OF SERVICE AND ARE THE COPYRIGHTED PROPERTY OF JORDAN ARCHITECTS, INC. THE USE IS EXPRESSLY INTENDED FOR THE PROJECT NOTED ABOVE AND MAY NOT BE REUSED OR REPRODUCED IN WHOLE OR IN PART WITHOUT THE WRITTEN PERMISSION OF JORDAN ARCHITECTS, INC. "COPYRIGHT" YEAR OF FIRST PUBLICATION 2020 JORDAN ARCHITECTS, INC.

JOB NUMBER: 21-928
SCALE: AS NOTED
DATE:

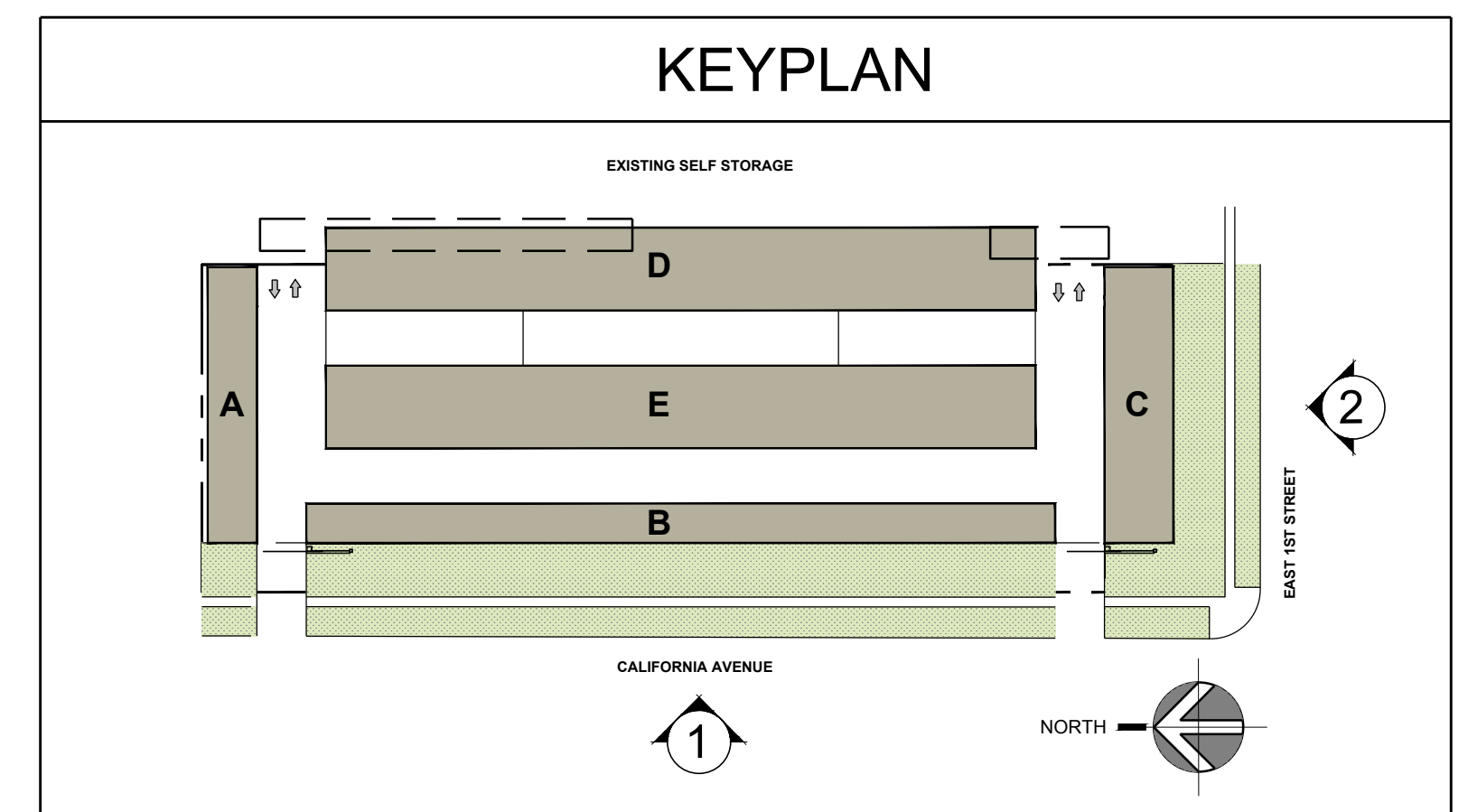
A.5



PRELIMINARY CALIFORNIA AVE. ELEVATION 1/16"=1'-0" 1



PRELIMINARY EAST FIRST ST. ELEVATION 1/16"=1'-0" 2



**DR. KIRK HOWARD
BEAUMONT EXPANSION
BEAUMONT, CA**

**SCHEME A
PRELIMINARY ELEVATIONS**

ja
JORDAN ARCHITECTS
131 CALLE IGLESIA, SUITE 100
SAN CLEMENTE, CA 92672
949.388.8090

THIS DRAWING AND ITS CONTENTS ARE INSTRUMENTS OF SERVICE AND ARE THE COPYRIGHTED PROPERTY OF JORDAN ARCHITECTS, INC. THE USE IS EXPRESSLY INTENDED FOR THE PROJECT NOTED ABOVE AND MAY NOT BE REUSED OR REPRODUCED IN WHOLE OR IN PART WITHOUT THE WRITTEN PERMISSION OF JORDAN ARCHITECTS, INC. "COPYRIGHT" YEAR OF FIRST PUBLICATION 2020 JORDAN ARCHITECTS, INC.

JOB NUMBER: 21-928
SCALE: AS NOTED
DATE:

A.5