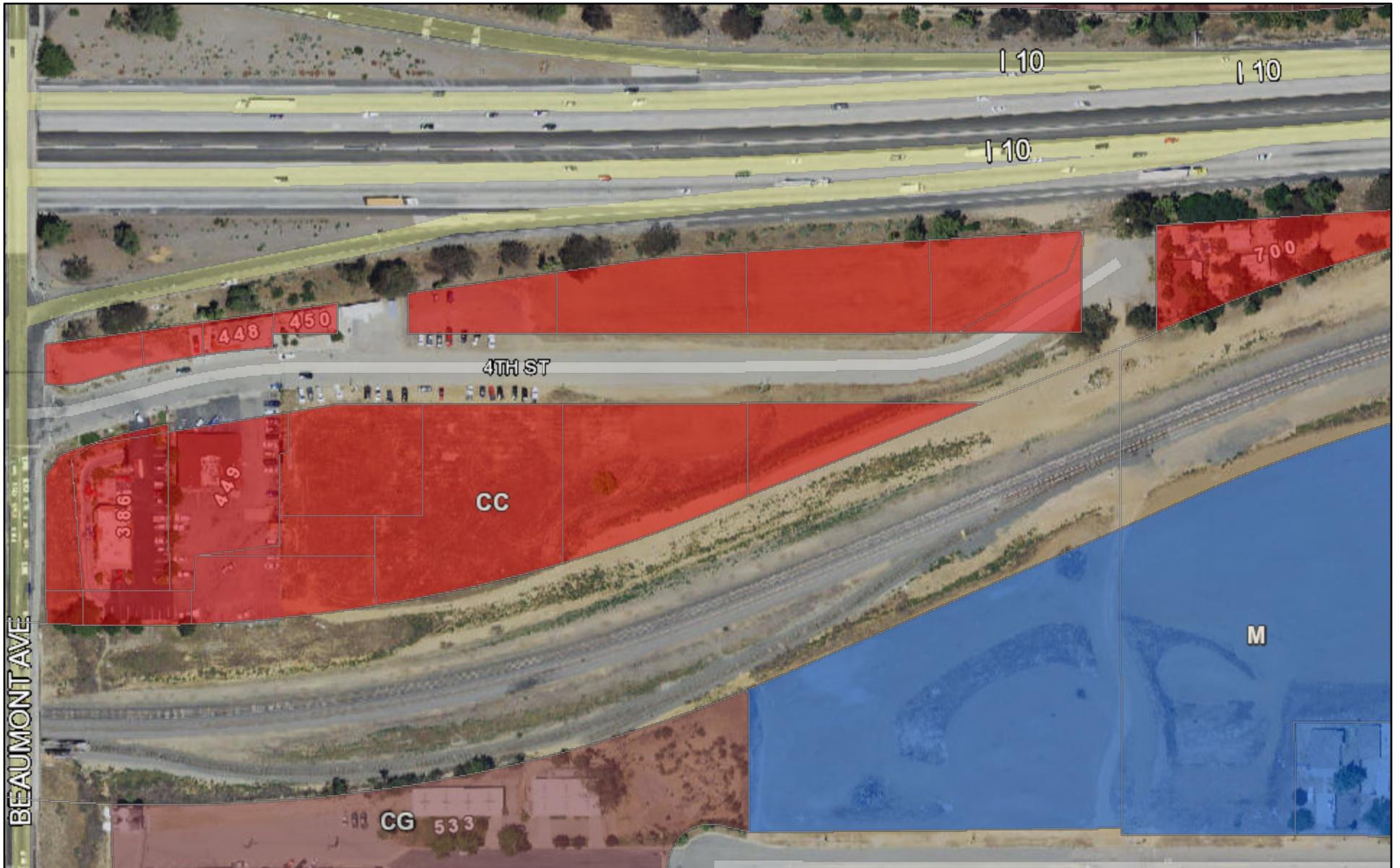


# 4th Street Properties



9/30/2019, 11:38:35 AM

Zoning	
<span style="display:inline-block; width:15px; height:15px; background-color:yellow; border:1px solid black;"></span> Rural Residential	<span style="display:inline-block; width:15px; height:15px; background-color:tan; border:1px solid black;"></span> Residential Multi-Family
<span style="display:inline-block; width:15px; height:15px; background-color:yellow; border:1px solid black;"></span> Residential Single-Family	<span style="display:inline-block; width:15px; height:15px; background-color:lightyellow; border:1px solid black;"></span> Specific Plan Area
<span style="display:inline-block; width:15px; height:15px; background-color:lightcoral; border:1px solid black;"></span> Commercial Community	<span style="display:inline-block; width:15px; height:15px; background-color:lightcoral; border:1px solid black;"></span> Commercial General
<span style="display:inline-block; width:15px; height:15px; background-color:lightblue; border:1px solid black;"></span> Commercial Manufacturing	<span style="display:inline-block; width:15px; height:15px; background-color:lightblue; border:1px solid black;"></span> Manufacturing
<span style="display:inline-block; width:15px; height:15px; background-color:lightpurple; border:1px solid black;"></span> Beaumont Avenue Overlay	<span style="display:inline-block; width:15px; height:15px; background-color:lightgrey; border:1px solid black;"></span> Public Facilities
<span style="display:inline-block; width:15px; height:15px; background-color:lightgreen; border:1px solid black;"></span> Mineral Resource Overlay	

