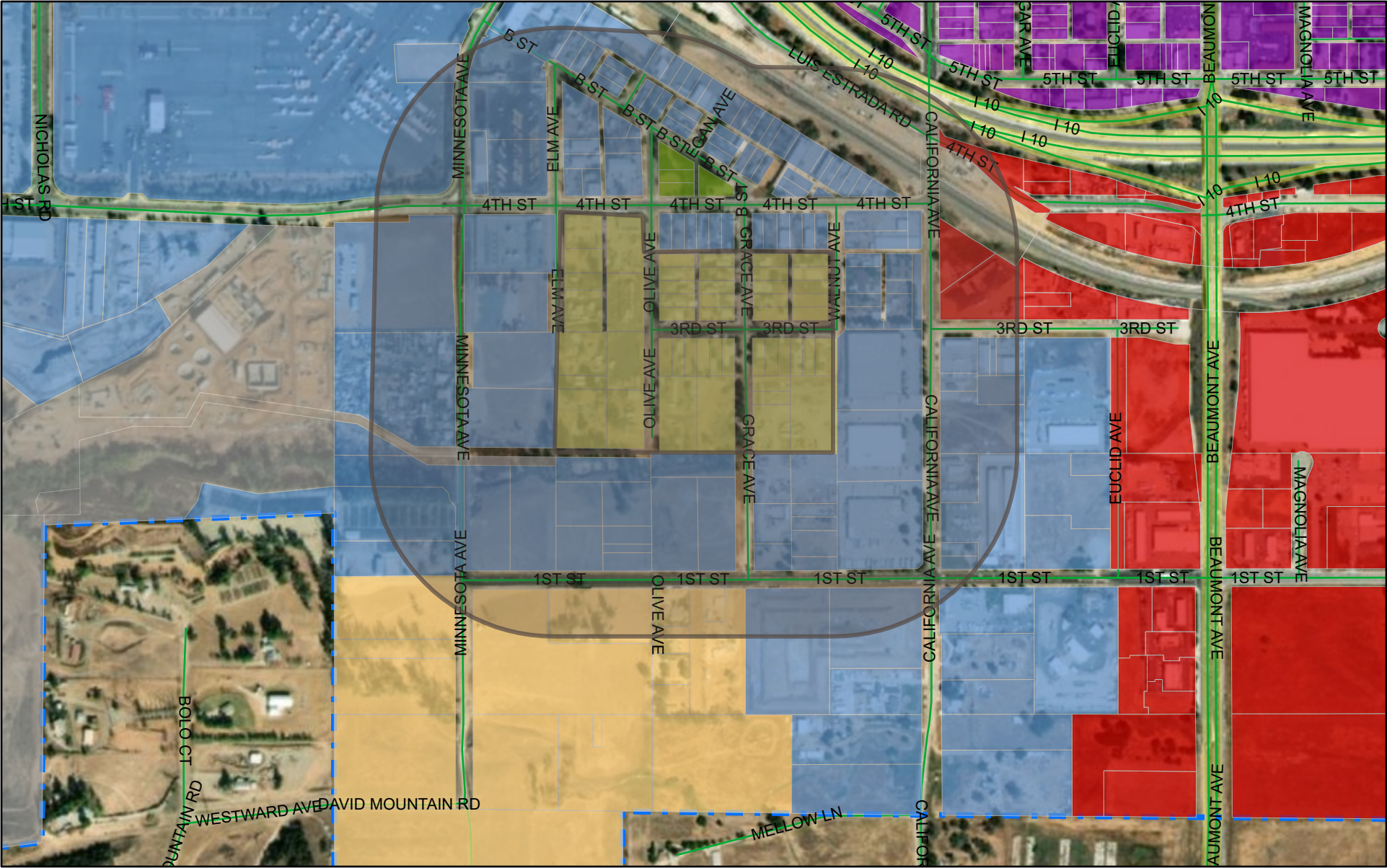
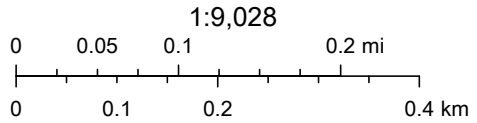


1,000ft Barrio Residential



9/2/2022, 7:54:13 AM

- Zoning
- Residential Single Family
 - Residential Traditional Neighborhood
 - Community Commercial
 - Public Facilities
 - Manufacturing
 - Recreation/Conservation
 - Downtown Mixed Use
 - City Boundary



San Bernardino County, Maxar