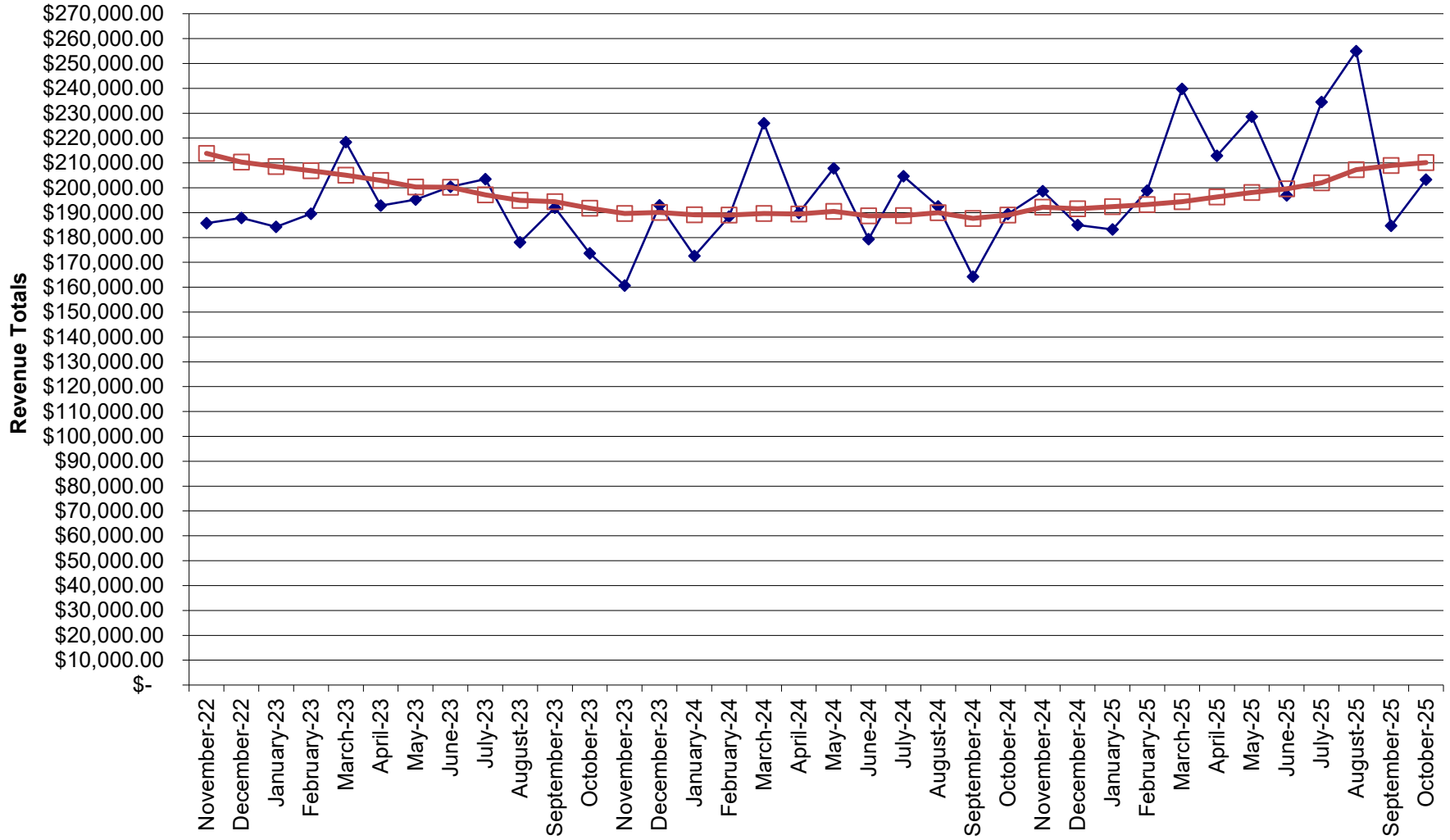


Gaming Revenue

Series1 Series2

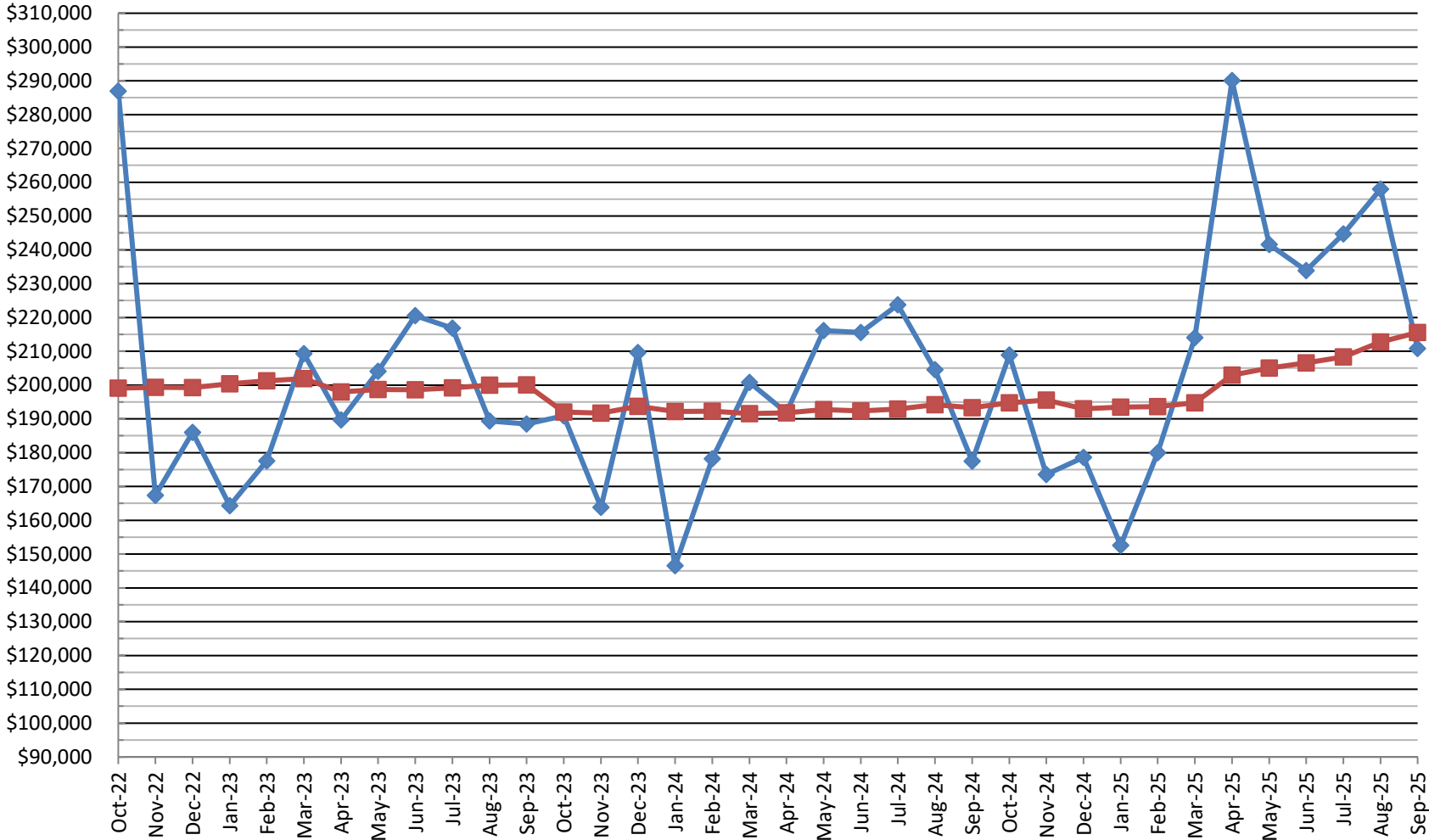


Hollywood Gaming Revenue
City of Bay Saint Louis

	Actual	12 Month Average
January-17	\$ 138,079.41	156,285.94
February-17	\$ 151,051.13	154,754.58
March-17	\$ 160,735.81	154,319.15
April-17	\$ 160,618.66	153,002.96
May-17	\$ 156,530.29	152,856.50
June-17	\$ 154,522.12	152,862.60
July-17	\$ 174,694.64	153,369.13
August-17	\$ 142,008.06	152,864.84
September-17	\$ 155,791.39	153,137.53
October-17	\$ 137,901.26	152,235.15
November-17	\$ 137,696.53	151,886.17
December-17	\$ 143,800.85	151,119.18
January-18	\$ 141,614.90	151,413.80
February-18	\$ 148,077.56	151,166.01
March-18	\$ 177,544.37	152,566.72
April-18	\$ 157,158.81	152,278.40
May-18	\$ 155,188.04	152,166.54
June-18	\$ 157,849.57	152,443.83
July-18	\$ 149,897.59	150,377.41
August-18	\$ 151,337.07	151,154.83
September-18	\$ 142,982.45	150,087.42
October-18	\$ 137,936.06	150,090.32
November-18	\$ 134,941.35	149,860.72
December-18	\$ 150,673.47	150,433.44
January-19	\$ 137,443.31	150,085.80
February-19	\$ 144,362.88	149,776.25
March-19	\$ 183,159.31	150,244.16
April-19	\$ 149,436.08	149,600.60
May-19	\$ 160,964.33	150,081.96
June-19	\$ 153,328.99	149,705.24
July-19	\$ 151,069.38	149,802.89
August-19	\$ 153,228.11	149,960.48
September-19	\$ 147,551.37	150,341.22
October-19	\$ 148,930.83	151,257.45
November-19	\$ 148,056.64	152,350.39
December-19	\$ 141,508.72	151,586.66
January-20	\$ 144,773.03	152,197.47
February-20	\$ 155,123.22	153,094.17
March-20	\$ 80,257.76	144,519.04
April-20	\$ -	132,066.03
May-20	\$ 41,205.94	122,086.17
June-20	\$ 141,680.01	121,115.42
July-20	\$ 161,392.99	121,975.72
August-20	\$ 163,791.05	122,855.96
September-20	\$ 153,074.28	123,316.21
October-20	\$ 190,073.29	126,744.74
November-20	\$ 165,991.19	128,239.29
December-20	\$ 158,790.51	129,679.44
January-21	\$ 204,307.65	134,640.66
February-21	\$ 164,942.37	135,458.92
March-21	\$ 239,784.98	148,752.86
April-21	\$ 261,055.92	170,507.52
May-21	\$ 239,319.57	187,016.98
June-21	\$ 210,777.31	192,775.09
July-21	\$ 249,280.64	200,099.06
August-21	\$ 159,587.92	199,748.80
September-21	\$ 226,436.39	205,862.31
October-21	\$ 251,280.52	210,962.91
November-21	\$ 210,209.55	214,647.78
December-21	\$ 230,094.63	220,589.79
January-22	\$ 205,333.79	220,675.30
February-22	\$ 209,778.67	224,411.66
March-22	\$ 240,158.09	224,442.75
April-22	\$ 217,561.22	220,818.19
May-22	\$ 226,965.13	219,788.66
June-22	\$ 202,623.99	219,109.21
July-22	\$ 239,152.44	218,265.20
August-22	\$ 205,058.80	222,054.44
September-22	\$ 198,399.60	219,718.04
October-22	\$ 205,115.61	215,870.96
November-22	\$ 185,726.63	213,830.72
December-22	\$ 187,812.77	210,307.23
January-23	\$ 184,308.42	208,555.11
February-23	\$ 189,549.30	206,869.33
March-23	\$ 218,337.89	205,050.98
April-23	\$ 192,829.40	202,990.00
May-23	\$ 195,251.27	200,347.18
June-23	\$ 200,365.70	200,158.99
July-23	\$ 203,500.72	197,188.01
August-23	\$ 178,004.87	194,933.52
September-23	\$ 192,028.24	194,402.57
October-23	\$ 173,607.46	191,776.89
November-23	\$ 160,674.19	189,689.19
December-23	\$ 192,900.76	190,113.19
January-24	\$ 172,616.74	189,138.88
February-24	\$ 188,364.48	189,040.14
March-24	\$ 225,902.64	189,670.54
April-24	\$ 189,835.64	189,421.06
May-24	\$ 207,797.82	190,466.61
June-24	\$ 179,361.59	188,716.26
July-24	\$ 204,619.29	188,809.48
August-24	\$ 192,452.37	190,013.44
September-24	\$ 164,213.34	187,695.53
October-24	\$ 189,397.60	189,011.37
November-24	\$ 198,610.13	192,172.70
December-24	\$ 185,027.28	191,516.58
January-25	\$ 183,200.61	192,398.57
February-25	\$ 198,867.67	193,273.83
March-25	\$ 239,798.10	194,431.79
April-25	\$ 212,828.75	196,347.88
May-25	\$ 228,621.88	198,083.22
June-25	\$ 196,921.71	199,546.56
July-25	\$ 234,529.31	202,039.06
August-25	\$ 254,943.91	207,246.69
September-25	\$ 184,668.90	208,951.32
October-25	\$ 203,286.63	210,108.74

Sales Tax

Series1 Series2

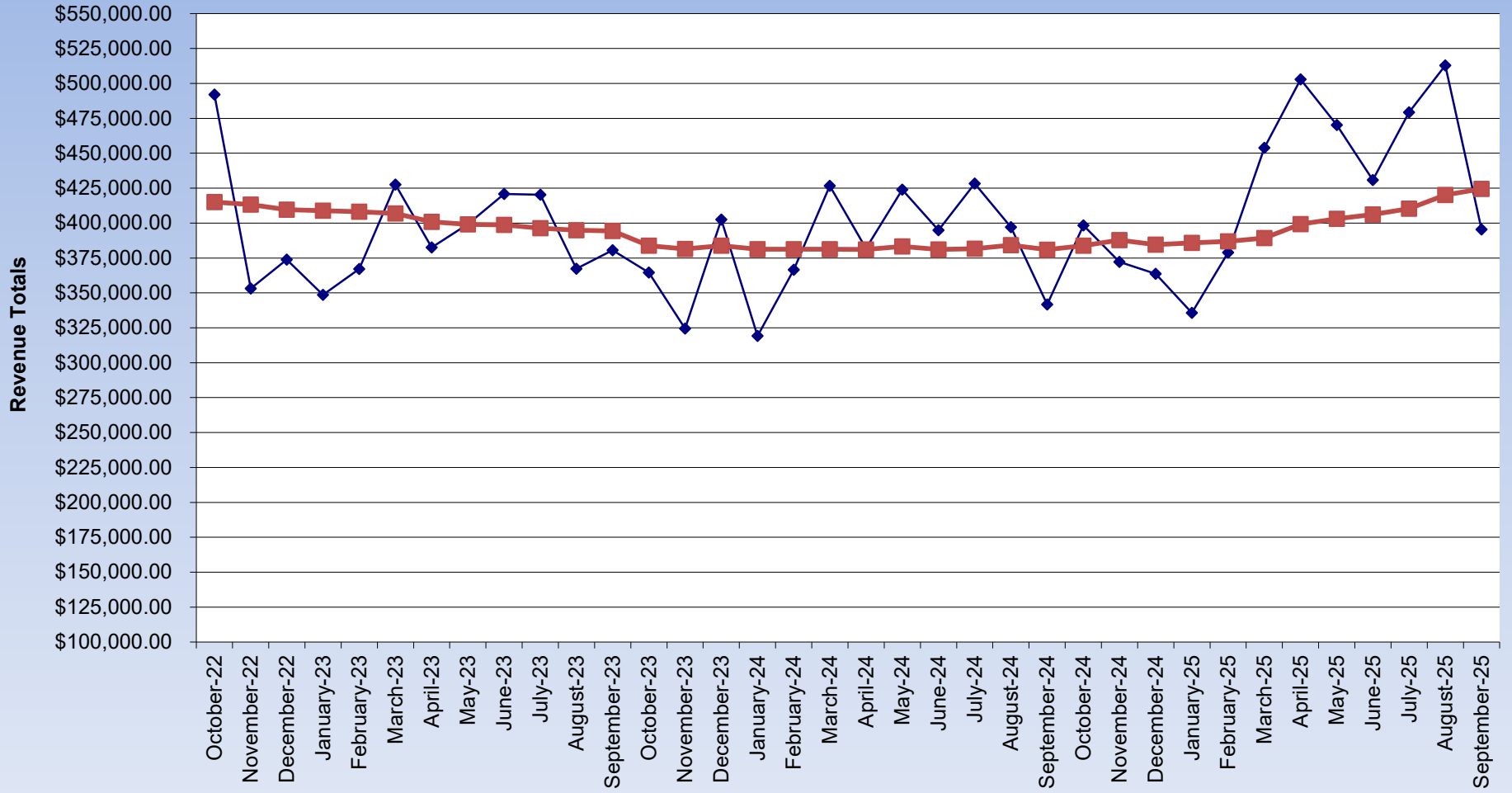


SALES TAX
City of Bay Saint Louis

Sales Tax		12 Month Average			
Data	Actual				
January-17	\$ 109,074.30	123,752.04	0.9%	13,433.51	
February-17	\$ 133,149.53	124,674.92	0.7%	11,074.53	
March-17	\$ 125,256.31	124,685.74	0.0%	129.84	
April-17	\$ 141,620.01	125,390.02	0.6%	8,451.40	
May-17	\$ 134,431.96	125,934.07	0.4%	6,528.57	
June-17	\$ 144,846.30	126,481.48	0.4%	6,568.95	
July-17	\$ 151,079.81	127,645.46	0.9%	13,967.76	
August-17	\$ 129,071.59	128,233.78	0.5%	7,059.82	
September-17	\$ 135,021.27	129,217.71	0.8%	11,807.14	85,752.01
October-17	\$ 123,988.86	129,071.60	-0.1%	(1,753.32)	
November-17	\$ 119,430.07	130,181.78	0.9%	13,322.16	
December-17	\$ 121,667.55	130,719.80	0.4%	6,456.25	
January-18	\$ 110,050.04	130,801.11	0.1%	975.74	
February-18	\$ 118,809.67	129,606.12	-0.9%	(14,339.86)	
March-18	\$ 163,782.62	132,816.65	2.5%	38,526.31	\$ 36,000.00
April-18	\$ 145,400.13	133,131.66	0.2%	3,780.12	\$ 199,782.62
May-18	\$ 154,206.86	134,779.56	1.2%	19,774.90	125256.31
June-18	\$ 157,316.21	135,818.72	0.8%	12,469.91	\$ 74,526.31
July-18	\$ 130,237.43	134,081.86	-1.3%	(20,842.38)	
August-18	\$ 146,029.95	135,495.06	1.1%	16,958.36	
September-18	\$ 130,130.39	135,087.48	-0.3%	(4,890.88)	70,437.31
October-18	\$ 146,257.29	136,943.18	1.4%	22,268.43	
November-18	\$ 126,487.42	137,531.30	0.4%	7,057.35	
December-18	\$ 134,605.78	138,609.48	0.8%	12,938.23	
January-19	\$ 124,058.02	139,776.81	0.8%	14,007.98	
February-19	\$ 130,276.13	140,732.35	0.7%	11,466.46	
March-19	\$ 148,613.27	139,468.24	-0.9%	(15,169.35)	
April-19	\$ 143,889.36	139,342.34	-0.1%	(1,510.77)	
May-19	\$ 150,048.93	138,995.85	-0.2%	(4,157.93)	
June-19	\$ 161,909.08	139,378.59	0.3%	4,592.87	
July-19	\$ 156,798.02	141,591.97	1.6%	26,560.59	
August-19	\$ 137,090.02	140,846.98	-0.5%	(8,939.93)	
September-19	\$ 138,138.49	141,514.32	0.5%	8,008.10	
October-19	\$ 139,286.56	140,933.42	-0.4%	(6,970.73)	
November-19	\$ 132,106.61	141,401.69	0.3%	5,619.19	
December-19	\$ 132,731.91	141,245.53	-0.1%	(1,873.87)	
January-20	\$ 133,255.00	142,011.95	0.5%	9,196.98	
February-20	\$ 138,676.26	142,711.96	0.5%	8,400.13	
March-20	\$ 129,391.99	141,110.19	-1.1%	(19,221.28)	
April-20	\$ 112,555.10	138,499.00	-1.9%	(31,334.26)	
May-20	\$ 145,544.76	138,123.65	-0.3%	(4,504.17)	
June-20	\$ 160,757.84	138,027.71	-0.1%	(1,151.24)	
July-20	\$ 160,184.69	138,309.94	0.2%	3,386.67	
August-20	\$ 146,406.43	139,086.30	0.6%	9,316.41	
September-20	\$ 145,394.21	139,690.95	0.4%	7,255.72	
October-20	\$ 152,416.43	140,785.10	0.8%	13,129.87	
November-20	\$ 146,189.38	141,958.67	0.8%	14,082.77	
December-20	\$ 159,650.97	144,201.92	1.6%	26,919.06	
January-21	\$ 144,795.21	145,163.61	0.7%	11,540.21	
February-21	\$ 145,070.72	145,696.48	0.4%	6,394.46	
March-21	\$ 184,494.00	150,288.31	3.2%	55,102.01	
April-21	\$ 189,789.96	156,724.55	4.3%	77,234.86	
May-21	\$ 192,067.56	160,601.45	2.5%	46,522.80	
June-21	\$ 201,215.27	163,972.90	2.1%	40,457.43	
July-21	\$ 200,658.66	167,345.73	2.1%	40,473.97	
August-21	\$ 155,815.95	168,129.86	0.5%	9,409.52	
September-21	\$ 197,799.93	172,497.00	2.6%	52,405.72	
October-21	\$ 188,513.13	175,505.06	1.7%	36,096.70	
November-21	\$ 164,943.85	177,067.93	0.9%	18,754.47	
December-21	\$ 186,379.63	179,295.32	1.3%	26,728.66	
January-22	\$ 151,662.79	179,867.62	0.3%	6,867.58	
February-22	\$ 166,235.90	181,631.39	1.0%	21,165.18	
March-22	\$ 202,069.73	183,096.03	0.8%	17,575.73	
April-22	\$ 236,668.82	187,002.60	2.1%	46,878.86	
May-22	\$ 195,358.68	187,276.86	0.1%	3,291.12	
June-22	\$ 221,527.42	188,969.54	0.9%	20,312.15	
July-22	\$ 210,272.70	189,770.71	0.4%	9,614.04	
August-22	\$ 179,706.38	191,761.58	1.0%	23,890.43	
September-22	\$ 187,608.45	190,912.29	-0.4%	(10,191.48)	
October-22	\$ 286,930.53	199,113.74	4.3%	98,417.40	
November-22	\$ 167,404.72	199,318.81	0.1%	2,460.87	
December-22	\$ 185,977.85	199,285.33	0.0%	(401.78)	
January-23	\$ 164,298.38	200,338.30	0.5%	12,635.59	
February-23	\$ 177,547.00	201,280.89	0.5%	11,311.10	
March-23	\$ 209,285.62	201,882.21	0.3%	7,215.89	
April-23	\$ 189,726.81	197,970.38	-1.9%	(46,942.01)	
May-23	\$ 204,080.46	198,697.19	0.4%	8,721.78	
June-23	\$ 220,500.48	198,611.62	0.0%	(1,026.94)	
July-23	\$ 216,805.04	199,155.98	0.3%	6,532.34	
August-23	\$ 189,358.96	199,960.36	0.4%	9,652.58	
September-23	\$ 188,454.32	200,030.85	0.0%	845.87	
October-23	\$ 190,900.65	192,028.36	-4.0%	(96,029.88)	
November-23	\$ 163,858.79	191,732.86	-0.2%	(3,545.93)	
December-23	\$ 209,646.03	193,705.21	1.0%	23,668.18	
January-24	\$ 146,531.03	192,224.60	-0.8%	(17,767.35)	
February-24	\$ 178,202.28	192,279.21	0.0%	655.28	
March-24	\$ 200,751.43	191,568.02	-0.4%	(8,534.19)	
April-24	\$ 191,893.11	191,748.55	0.1%	2,166.30	
May-24	\$ 216,105.00	192,750.59	0.5%	12,024.54	
June-24	\$ 215,596.27	192,341.91	-0.2%	(4,904.21)	
July-24	\$ 223,718.99	192,918.07	0.3%	6,913.95	
August-24	\$ 204,573.82	194,185.98	0.7%	15,214.86	
September-24	\$ 177,512.25	193,274.14	-0.5%	(10,942.07)	
October-24	\$ 208,860.66	194,770.81	0.8%	17,960.01	
November-24	\$ 173,556.24	195,578.93	0.4%	9,697.45	
December-24	\$ 178,621.84	192,993.58	-1.3%	(31,024.19)	
January-25	\$ 152,594.67	193,498.88	0.3%	6,063.64	
February-25	\$ 180,009.80	193,649.51	0.1%	1,807.52	
March-25	\$ 214,053.63	194,758.02	0.6%	13,302.20	
April-25	\$ 290,095.14	202,941.53	4.2%	98,202.03	
May-25	\$ 241,545.13	205,061.54	1.0%	25,440.13	
June-25	\$ 233,847.54	206,582.48	0.7%	18,251.27	
July-25	\$ 244,738.40	208,334.09	0.8%	21,019.41	
August-25	\$ 257,974.49	212,784.15	2.1%	53,400.67	
September-25	\$ 210,829.27	215,560.57	1.3%	33,317.02	
October-25		198,155.51	-8.1%	(208,860.66)	

Combined Revenue

Series1 Series2



Combined		
Data	Actual	12 Month Average
January-17	\$ 247,153.71	\$ 280,037.98
February-17	\$ 284,200.66	\$ 279,429.50
March-17	\$ 285,992.12	\$ 279,004.88
April-17	\$ 302,238.67	\$ 278,392.98
May-17	\$ 290,962.25	\$ 278,790.57
June-17	\$ 299,368.42	\$ 279,344.08
July-17	\$ 325,774.45	\$ 281,014.59
August-17	\$ 271,079.65	\$ 281,098.62
September-17	\$ 290,812.66	\$ 282,355.24
October-17	\$ 261,890.12	\$ 281,306.75
November-17	\$ 257,126.60	\$ 282,067.95
December-17	\$ 265,468.40	\$ 281,838.98
January-18	\$ 251,664.94	\$ 282,214.91
February-18	\$ 266,887.23	\$ 280,772.13
March-18	\$ 341,326.99	\$ 285,383.37
April-18	\$ 302,558.94	\$ 285,410.05
May-18	\$ 309,394.90	\$ 286,946.11
June-18	\$ 315,165.78	\$ 288,262.56
July-18	\$ 280,135.02	\$ 284,459.27
August-18	\$ 297,367.02	\$ 286,649.88
September-18	\$ 273,112.84	\$ 285,174.90
October-18	\$ 284,193.35	\$ 287,033.50
November-18	\$ 261,428.77	\$ 287,392.02
December-18	\$ 285,279.25	\$ 289,042.92
January-19	\$ 261,501.33	\$ 289,862.62
February-19	\$ 274,639.01	\$ 290,508.60
March-19	\$ 331,772.58	\$ 289,712.40
April-19	\$ 293,325.44	\$ 288,942.94
May-19	\$ 311,013.26	\$ 289,077.80
June-19	\$ 315,238.07	\$ 289,083.83
July-19	\$ 307,867.40	\$ 291,394.86
August-19	\$ 290,318.13	\$ 290,807.45
September-19	\$ 285,689.86	\$ 291,855.54
October-19	\$ 288,217.39	\$ 292,190.87
November-19	\$ 280,163.25	\$ 293,752.08
December-19	\$ 274,240.63	\$ 292,832.20
January-20	\$ 278,028.03	\$ 294,209.42
February-20	\$ 293,799.48	\$ 295,806.13
March-20	\$ 209,649.75	\$ 285,629.22
April-20	\$ 112,555.10	\$ 270,565.03
May-20	\$ 186,750.70	\$ 260,209.82
June-20	\$ 302,437.85	\$ 259,143.13
July-20	\$ 321,577.68	\$ 260,285.65
August-20	\$ 310,197.48	\$ 261,942.27
September-20	\$ 298,468.49	\$ 263,007.15
October-20	\$ 342,489.72	\$ 267,529.85
November-20	\$ 312,180.57	\$ 270,197.96
December-20	\$ 318,441.48	\$ 273,881.36
January-21	\$ 349,102.86	\$ 279,804.26
February-21	\$ 310,013.09	\$ 281,155.40
March-21	\$ 424,278.98	\$ 299,041.17
April-21	\$ 450,845.88	\$ 327,232.07
May-21	\$ 431,387.13	\$ 347,618.43
June-21	\$ 411,992.58	\$ 356,748.00
July-21	\$ 449,939.30	\$ 367,444.80
August-21	\$ 315,403.87	\$ 367,878.66
September-21	\$ 424,236.32	\$ 378,359.32
October-21	\$ 439,793.65	\$ 386,467.98
November-21	\$ 375,153.40	\$ 391,715.71
December-21	\$ 416,474.26	\$ 399,885.11
January-22	\$ 356,996.58	\$ 400,542.92
February-22	\$ 376,014.57	\$ 406,043.04
March-22	\$ 442,227.82	\$ 407,538.78
April-22	\$ 454,230.04	\$ 407,820.79
May-22	\$ 422,323.81	\$ 407,065.52
June-22	\$ 424,151.41	\$ 408,078.75
July-22	\$ 449,425.14	\$ 408,035.91
August-22	\$ 384,765.18	\$ 413,816.02
September-22	\$ 386,008.05	\$ 410,630.33
October-22	\$ 492,046.14	\$ 414,984.70
November-22	\$ 353,131.35	\$ 413,149.53
December-22	\$ 373,790.62	\$ 409,592.56
January-23	\$ 348,606.80	\$ 408,893.41
February-23	\$ 367,096.30	\$ 408,150.22
March-23	\$ 427,623.51	\$ 406,933.20
April-23	\$ 382,556.21	\$ 400,960.38
May-23	\$ 399,331.73	\$ 399,044.37
June-23	\$ 420,866.18	\$ 398,770.60
July-23	\$ 420,305.76	\$ 396,343.99
August-23	\$ 367,363.83	\$ 394,893.87
September-23	\$ 380,482.56	\$ 394,433.42
October-23	\$ 364,508.11	\$ 383,805.25
November-23	\$ 324,532.98	\$ 381,422.05
December-23	\$ 402,546.79	\$ 383,818.40
January-24	\$ 319,147.77	\$ 381,363.48
February-24	\$ 366,566.76	\$ 381,319.35
March-24	\$ 426,654.07	\$ 381,238.56
April-24	\$ 381,728.75	\$ 381,169.61
May-24	\$ 423,902.82	\$ 383,217.20
June-24	\$ 394,957.86	\$ 381,058.17
July-24	\$ 428,338.28	\$ 381,727.55
August-24	\$ 397,026.19	\$ 384,199.41
September-24	\$ 341,725.59	\$ 380,969.66
October-24	\$ 398,258.26	\$ 383,782.18
November-24	\$ 372,166.37	\$ 387,751.63
December-24	\$ 363,649.12	\$ 384,510.15
January-25	\$ 335,795.28	\$ 385,897.45
February-25	\$ 378,877.47	\$ 386,923.34
March-25	\$ 453,851.73	\$ 389,189.81
April-25	\$ 502,923.89	\$ 399,289.41
May-25	\$ 470,167.01	\$ 403,144.75
June-25	\$ 430,769.25	\$ 406,129.04
July-25	\$ 479,267.71	\$ 410,373.16
August-25	\$ 512,918.40	\$ 420,030.84
September-25	\$ 395,498.17	\$ 424,511.89