

Bay St Louis Historic L and N Train Depot

Beautification Committee
Hancock County Chamber of Commerce

History

1876: The original structure was wooden and the depot was crucial for shipping timber, produce and ice as well as serving tourists visiting from New Orleans. This structure was destroyed by a fire on February 29, 1928.

1928: Current building was designed in a Mission Revival style. It opened on July 29, 1929. It is listed on the National Register and was designated a Mississippi Landmark in 1995. It was included in the publication, "Great American Railroad Stations", 1996.

1929-1971: Active depot until April 30, 1971 when Pan-American made its last run.

1984-1985: Amtrak started the Gulf Coast Limited to service the World's Fair in New Orleans.

1993-2005: Amtrak Sunset Limited, servicing New Orleans to Florida, suspended due to Katrina

2025: Amtrak Mobile Mardi Gras Service runs from New Orleans to Mobile.

History of Landscape Development at the Depot

Post Katrina: An MDA Grant for the City of Bay St Louis supported the revitalization of the landscape for the depot. Liz Y Seal and Katharine Ohman, the Chair of the Beautification Committee for the Hancock Chamber, worked together on this project.

The grant supported the development of the pond. Slade Fisheries worked with the Beautification Committee to donate several species of fish. The floating water fountain was donated by a local private foundation.

Trees were donated through the Life Grows On Memorial Tree Planting Program of the Chamber Beautification Committee, including Crepe Myrtles, Olive Trees, Live Oaks, Palms and Holly Trees.

The Beautification Committee donated two wooden painted picnic tables.

Phase I of Landscape Proposal, Beautification Committee

This project is a collaboration of the Hancock County Chamber of Commerce Beautification Committee, the Bay-Waveland Garden Club and the Hancock County Master Gardeners Association.

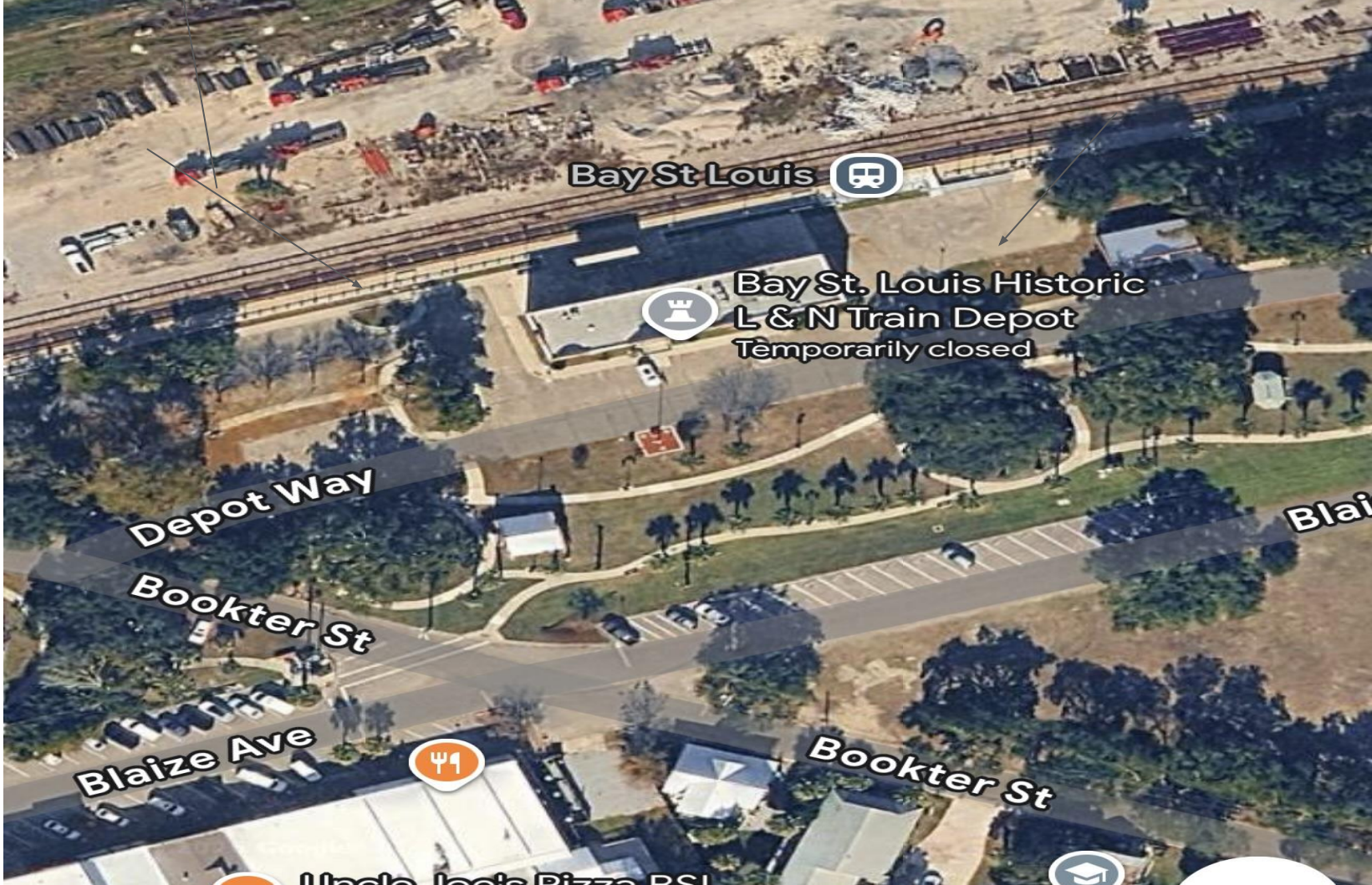
Our proposal includes:

Replanting an existing garden bed on the left of the depot and creating a new flower bed in the green space next to the facilities building on the right of the depot, both very visible to visitors arriving by train.

Antique roses that were in existence in 1929 will be used in the flower beds.

Landscaping the back of the facilities building with Aspidistra (cast iron plants) propagated by the Propagation Committee of the Bay Waveland Garden Club. Trellised flowers may also be added or mural painting by a local artist.

Two concrete tables and benches will be added to the shaded area behind the facilities building, also very visible to visitors arriving by train.



Bay St Louis



Bay St. Louis Historic
L & N Train Depot
Temporarily closed



Depot Way

Bookter St

Blaize Ave

Bookter St

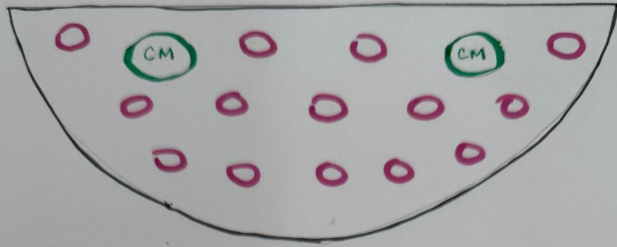
Blai



Ultrad... Pizza PSL

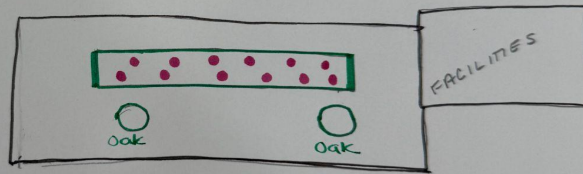


LEFT ROSE BED



Left Rose Bed: Existing crepe myrtles
Will add 14 rose bushes, 4 varieties

RIGHT ROSE BED



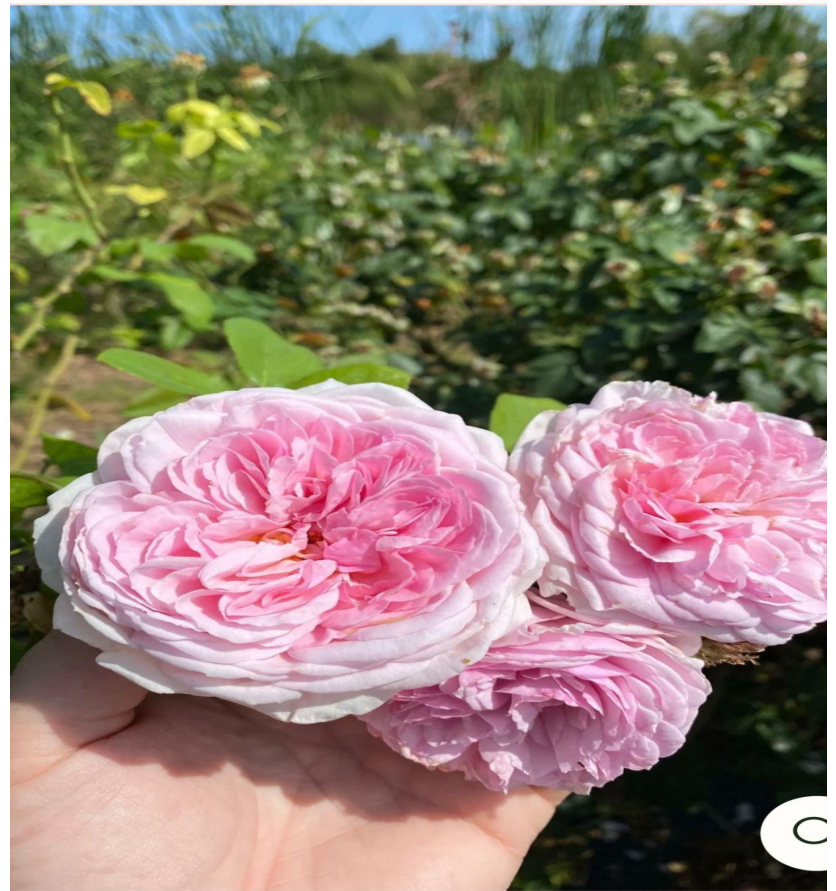
Right Rose Bed: Existing oak trees.
Will create a 30' by 4' flower bed with
12 rose bushes, 4 varieties

Note: Will add camelias into each bed to
add fall/winter color





Mrs. R M Finch (1923)



La Vicomtesse, Pioneer rose depicting flower in 1816 Parisian painting



Katharina Zeimet (1861)



Clotilde Soupert (1888)

Financials:

Donations: This project is being funded by donations from the community. To date, we have funding for:

20/26 antique roses (\$50.00/rose)

2 concrete tables and benches for seating area behind facilities building (\$300/per set).

Donations are made to :

Hancock County Community Development Foundation

300 S Second Street Bay St Louis, Mississippi, 30520

Assistance requested: We request assistance from the city to dig the new flower beds behind and adjacent to the facilities building. If possible, we would also like help establishing a watering system for the beds.