

6649 GENERAL HAIG STREET
NEW ORLEANS, LA 70124

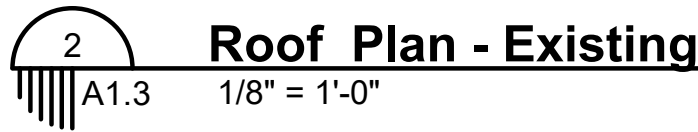
410 N. Beach Blvd.
Bay Saint Louis, MS 39520

Heausler Design, LLC retains sole ownership of the documents herein. They are intended to be used solely for the referenced project. Any unauthorized use, reuse, modification, or reproduction of these documents, in whole or in part, shall be at the recipient's sole risk with no liability or legal means to the Architect.

HEAUSLER DESIGN LLC Copyright ©2024

ISSUE DATE		October 4, 2024
DESIGN PHASE		Historic Review
REVISIONS		
No.	Date	

A1.3



EMILY HEAUSLER, ARCHITECT

6649 GENERAL HAIG STREET
NEW ORLEANS, LA 70124

www.designheaus.com
913-206-5153

KEYNOTE LEGEND

TAYLOR RESIDENCE

410 N. Beach Blvd.
Bay Saint Louis, MS 39520

FOR PERMIT

Heausler Design, LLC retains sole ownership of the documents herein. They are intended to be used solely for the referenced project. Any unauthorized use, reuse, modification, or reproduction of these documents, in whole or in part, shall be at the recipient's sole risk with no liability or legal means to the Architect.

HEAUSLER DESIGN LLC Copyright ©2024

ISSUE DATE October 4, 2024
DESIGN PHASE Historic Review

REVISIONS	
No.	Date

EXTERIOR ELEVATIONS

A2.0



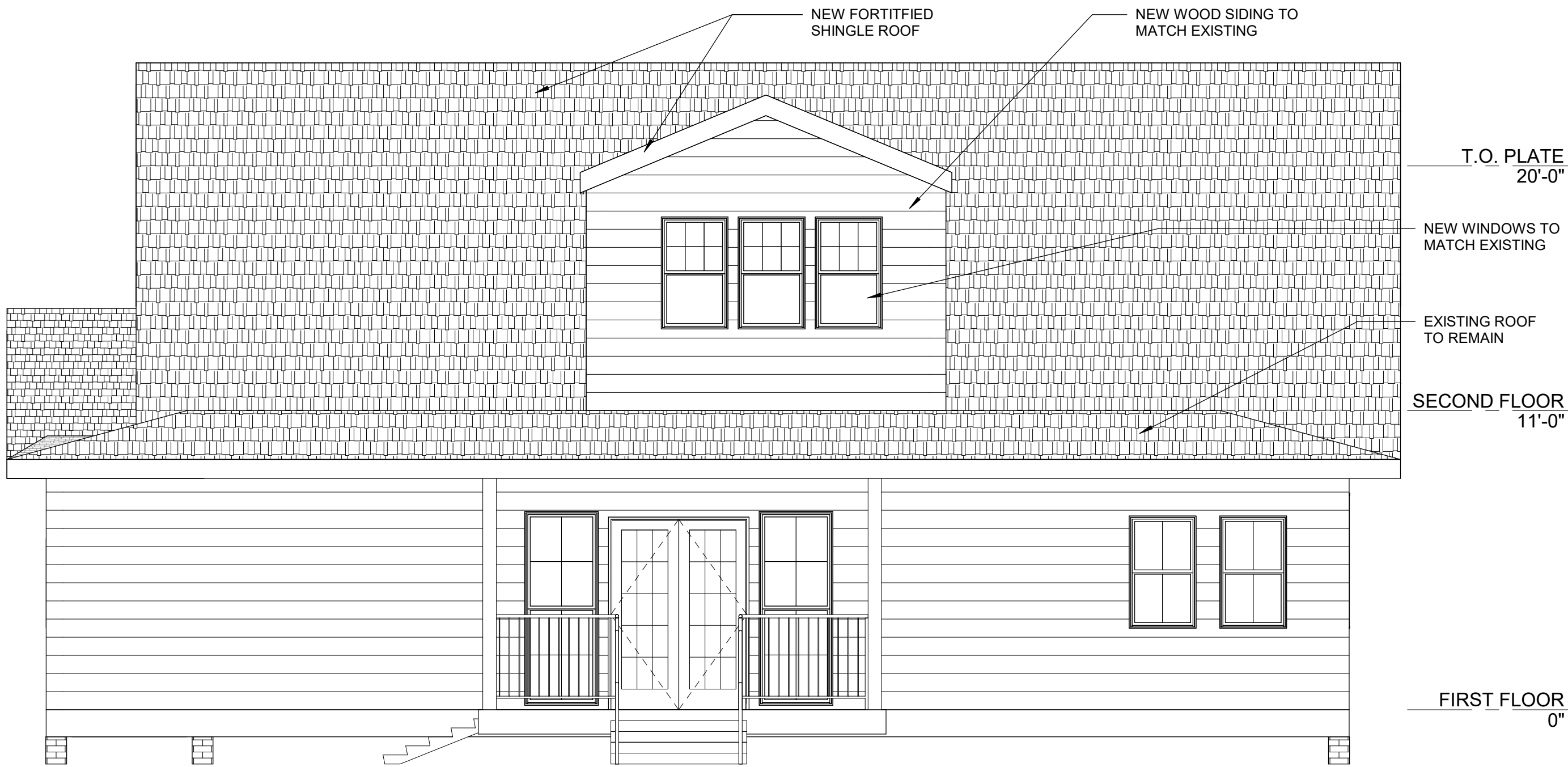
3 Front Elevation - Existing
1/4" = 1'-0"



4 REAR EXISTING
1/4" = 1'-0"



1 Front Elevation - Proposed
1/4" = 1'-0"



2 Rear Elevation - Proposed
1/4" = 1'-0"

EMILY HEAUSLER, ARCHITECT

6649 GENERAL HAIG STREET
NEW ORLEANS, LA 70124

www.designheaus.com
913-206-5153

TAYLOR RESIDENCE

410 N. Beach Blvd.
Bay Saint Louis, MS 39520

FOR PERMIT

Heausler Design, LLC retains sole ownership of the documents herein. They are intended to be used solely for the referenced project. Any unauthorized use, reuse, modification, or reproduction of these documents, in whole or in part, shall be at the recipient's sole risk with no liability or legal means to the Architect.

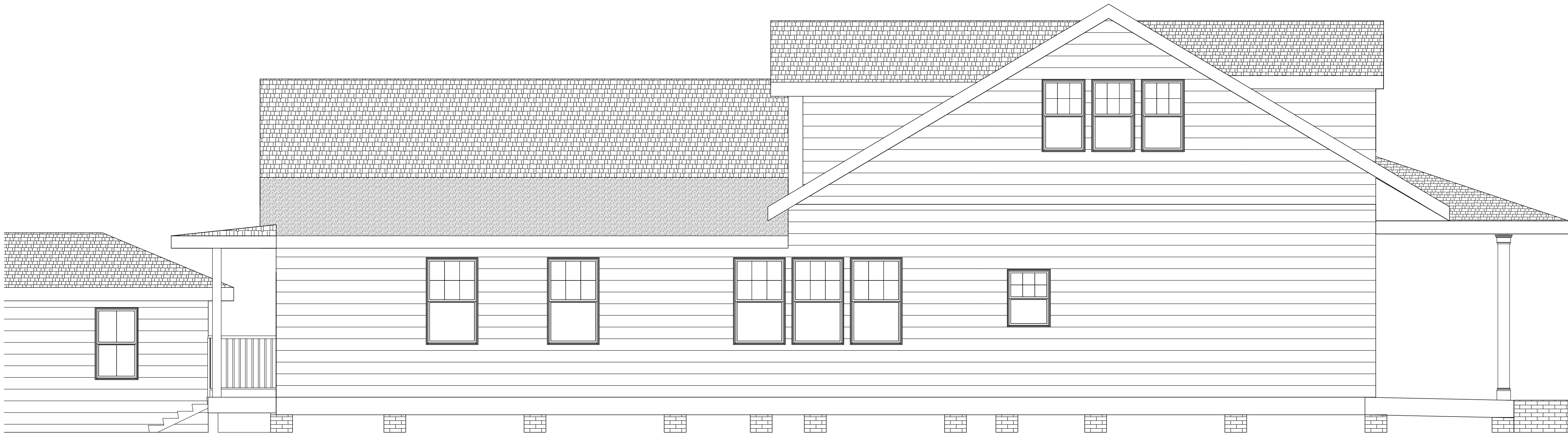
HEAUSLER DESIGN LLC Copyright ©2024

ISSUE DATE	October 4, 2024
DESIGN PHASE	Historic Review

REVISIONS	
No.	Date

EXTERIOR ELEVATIONS

A2.1



2
A2.1
Left Elevation - Existing
1/4" = 1'-0"

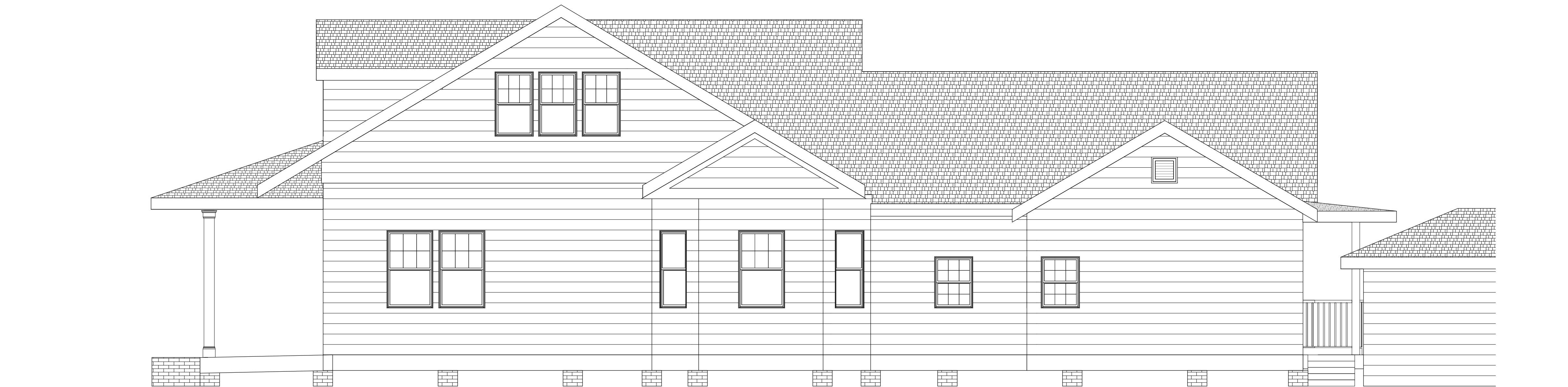


1
A2.1
Left Elevation - Proposed
1/4" = 1'-0"

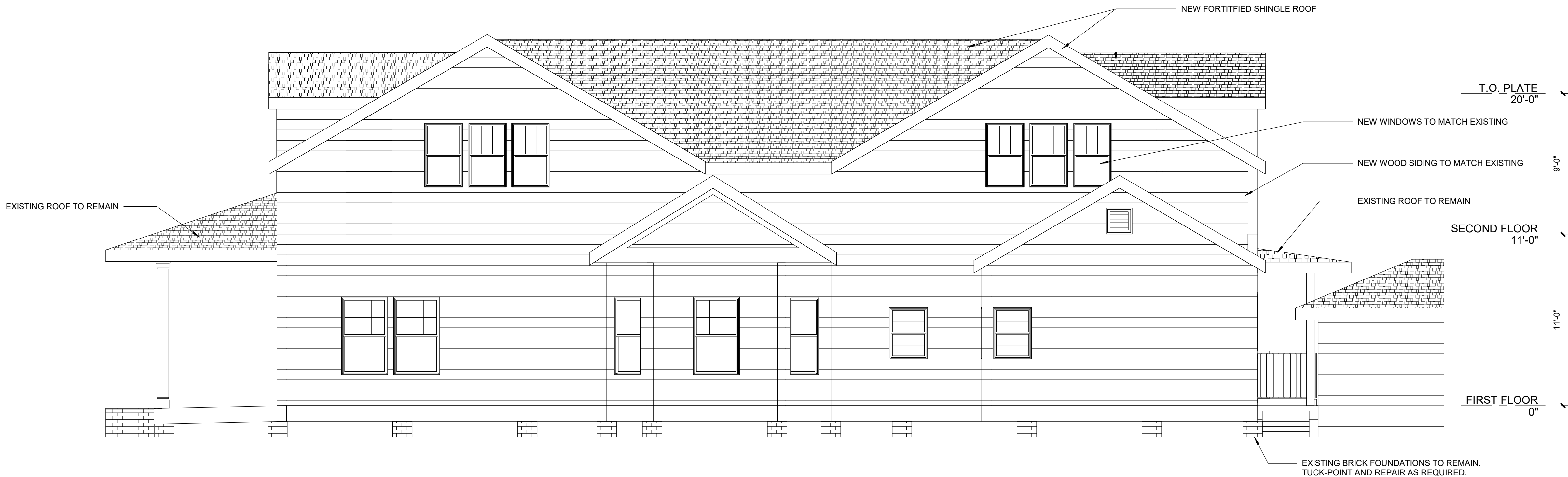
EMILY HEAUSLER, ARCHITECT

6649 GENERAL HAIG STREET
NEW ORLEANS, LA 70124

www.designheaus.com
913-206-5153



2
A2.2
1/4" = 1'-0"



1
A2.2
1/4" = 1'-0"

TAYLOR RESIDENCE

410 N. Beach Blvd.
Bay Saint Louis, MS 39520

FOR PERMIT

Heausler Design, LLC retains sole ownership of the documents herein. They are intended to be used solely for the referenced project. Any unauthorized use, reuse, modification, or reproduction of these documents, in whole or in part, shall be at the recipient's sole risk with no liability or legal means to the Architect.
HEAUSLER DESIGN LLC Copyright ©2024

ISSUE DATE October 4, 2024

DESIGN PHASE Historic Review

REVISIONS

No.	Date

EXTERIOR ELEVATIONS

A2.2