



BAY ST. LOUIS CONVENIENCE STORE
 1083 HIGHWAY 90, BAY SAINT LOUIS
 HANCOCK COUNTY, MISSISSIPPI
 CIVIL PERMIT SET

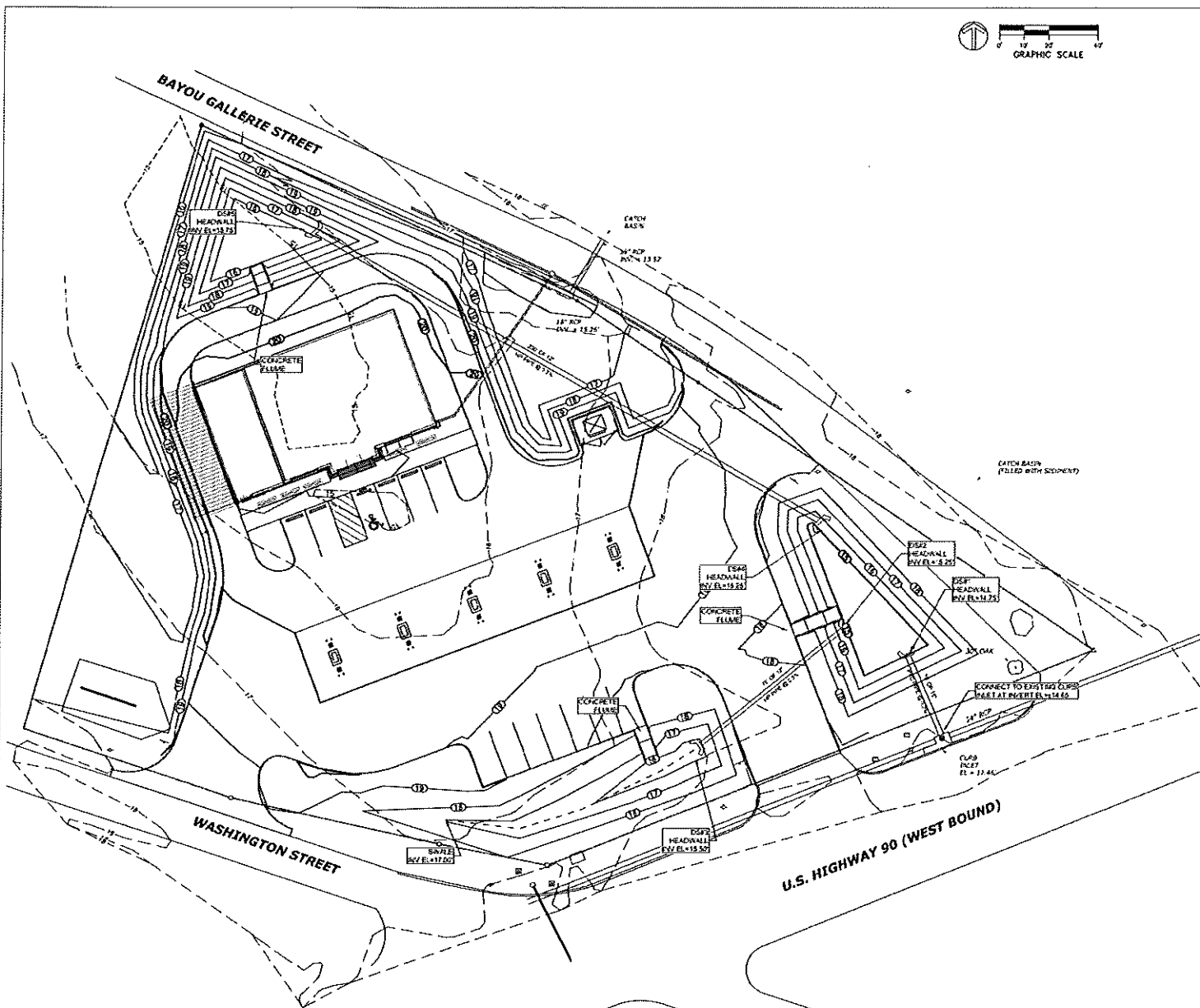
SHEET REVISIONS	
#	DATE / REVISION
1	23/03/2025 REVISED PER SET
2	23/03/2025 REVISED PER SET
3	23/03/2025 REVISED PER SET



SHEET TITLE
DRAINAGE PLAN

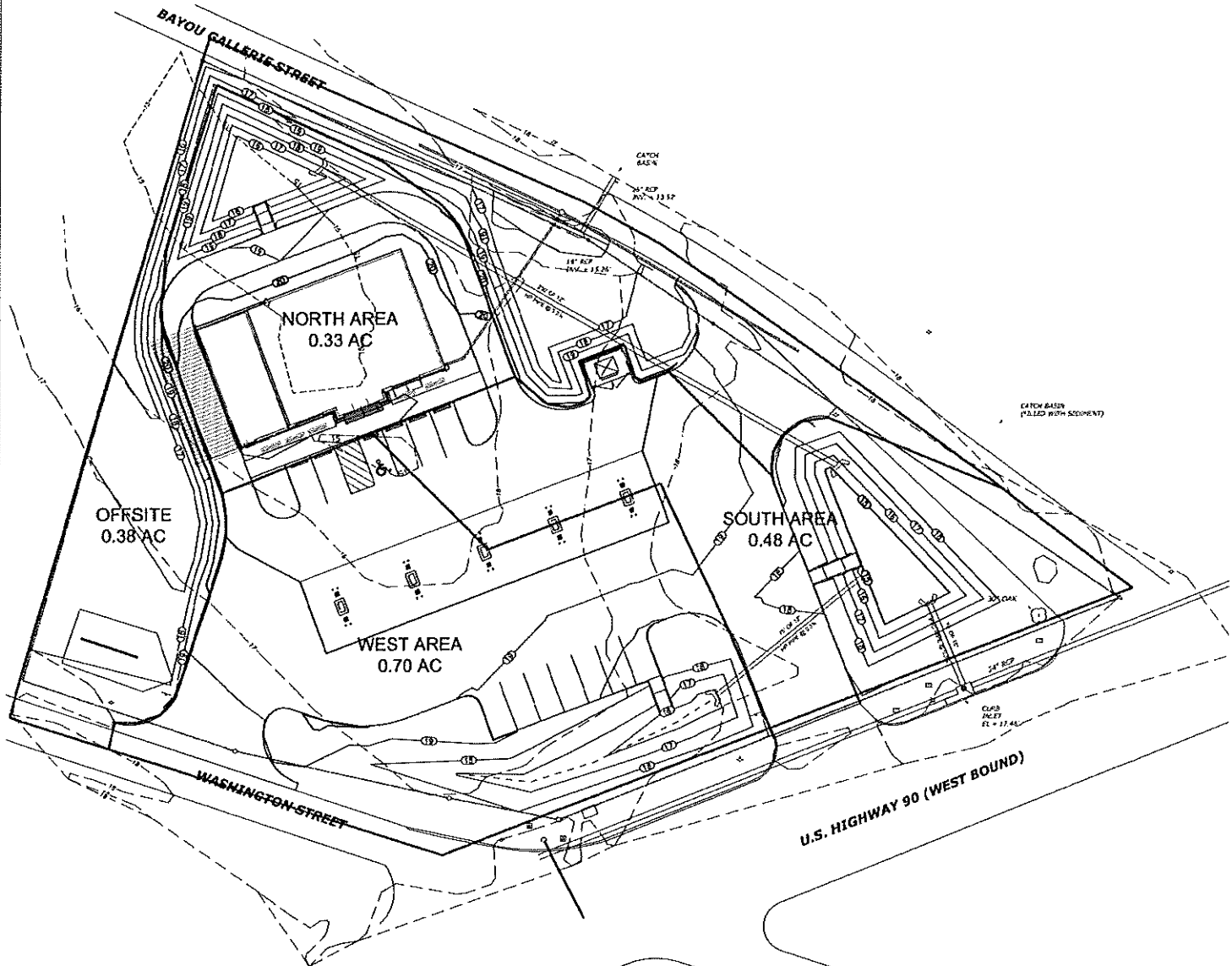
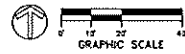
DATE: 17/03/2025
 SHEET NUMBER: 1

C310



LEGEND	
— 10 —	DENOTES EXISTING GRADE CONTOUR
— 12 —	DENOTES PROPOSED GRADE CONTOUR
8.00	DENOTES PROPOSED SPOT ELEVATION
~~~~~	DENOTES WATER-SHED FLOW DIRECTION
DS	DRAIN STRUCTURE
PCP	REINFORCED CONCRETE PIPE
RCAP	REINFORCED CONCRETE ARCH PIPE
HP	HIGH PERFORMANCE POLYPROPYLENE STORM PIPE

**1**  
**C310**  
**DRAINAGE PLAN**  
 SCALE: 1" = 20'



**LIVE OAK ENGINEERING**  
 2502 7TH AVE S.  
 BRANDENBURG, MS 39233  
 601.834.4000  
 601.834.4001  
 LIVEOAKENGINEERING.COM  
 LICENSE # 2181

**BAY ST. LOUIS CONVENIENCE STORE**  
 1083 HIGHWAY 90, BAY SAINT LOUIS  
 HANCOCK COUNTY, MISSISSIPPI  
 CIVIL PERMIT SET

SHEET REVISIONS	
1	DATE/REFERENCE
2	BY/DATE/ISSUE NO.
3	BY/DATE/ISSUE NO.

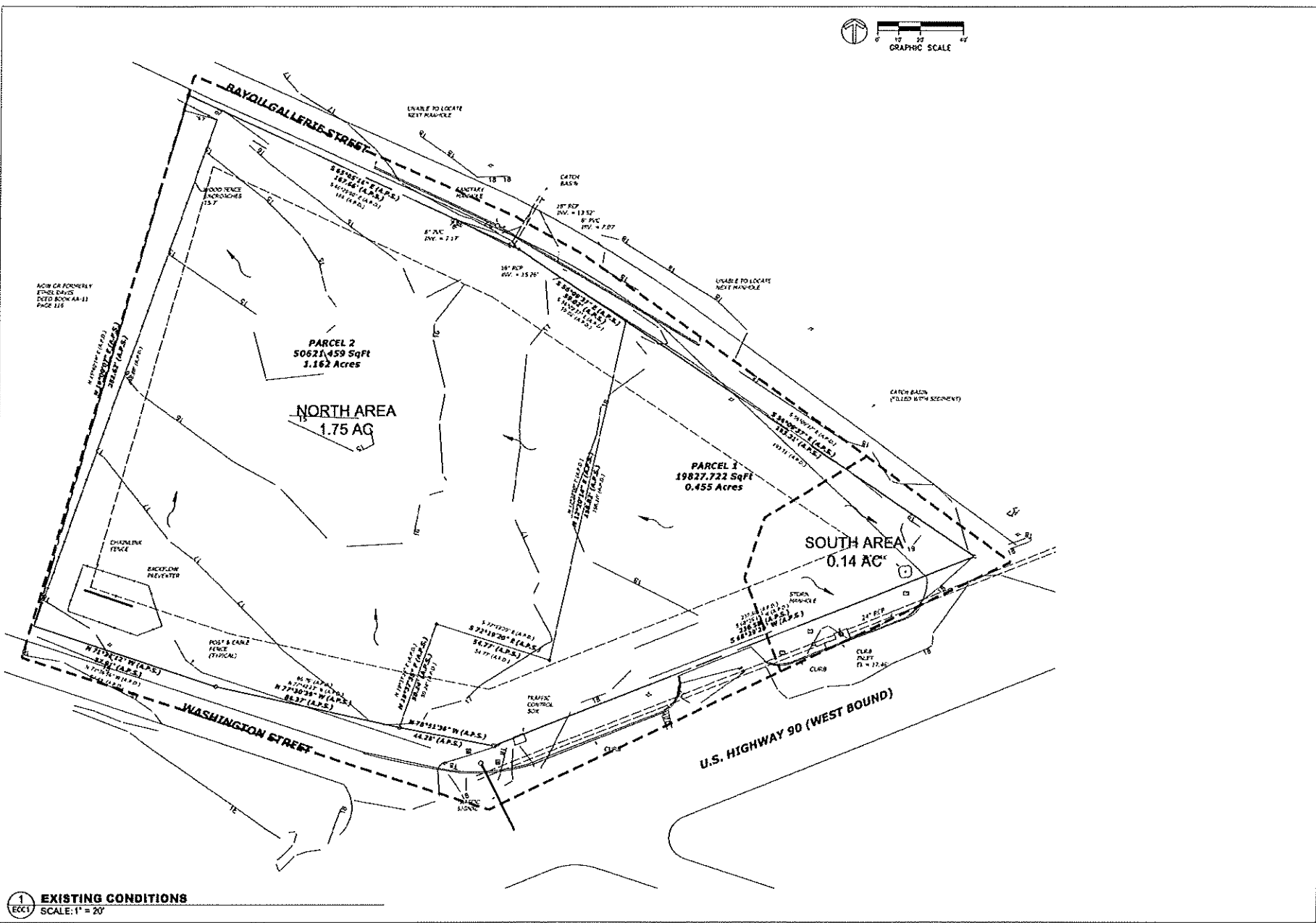


SHEET TITLE  
**POST CONDITIONS**

DATE: 07-03-2025  
 SHEET NUMBER: 9

**E002**

**1**  
 E002  
**POST CONDITIONS**  
 SCALE: 1" = 20'



ACW OR FORMERLY  
 OTHER BOUND  
 DETD BOOK AA-11  
 PAGE 115

**BAY ST. LOUIS CONVENIENCE STORE**  
 1083 HIGHWAY 90, BAY SAINT LOUIS  
 HANCOCK COUNTY, MISSISSIPPI  
 CIVIL PERMIT SET

SHEET REVISIONS	DATE/REFERENCE
1	03-20-2024 09:07 PM

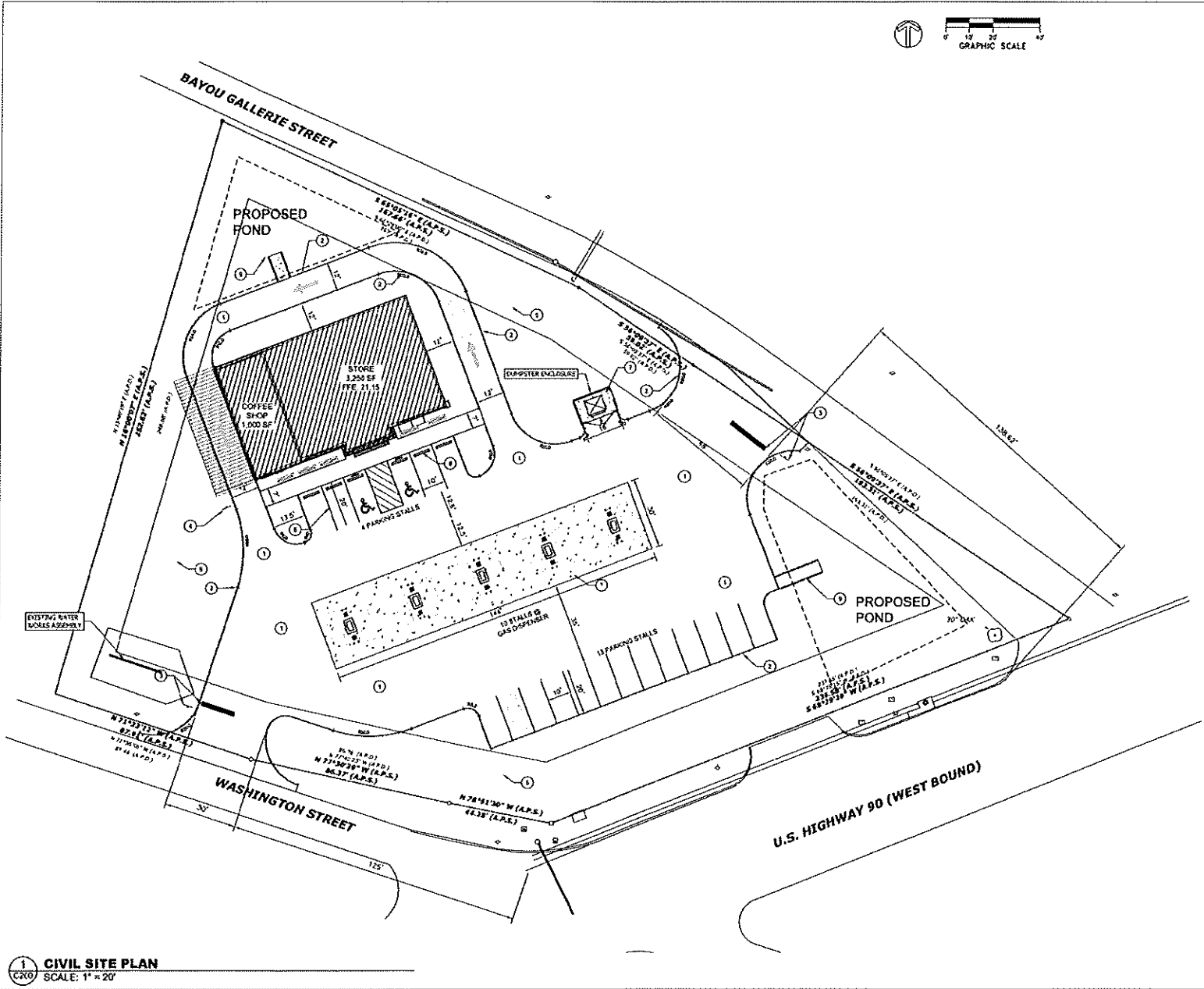
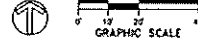


SHEET TITLE  
**EXISTING CONDITIONS**

DATE: 11.7.2024  
 SHEET NUMBER: 2

**E001**

**1**  
 EXISTING CONDITIONS  
 SCALE: 1" = 20'



**SITE WORK KEYNOTES**

- ① ASPHALT PAVEMENT
- ② CONCRETE CURB
- ③ STOP BAR AND STOP SIGN
- ④ DO NOT ENTER SIGN
- ⑤ GREEN SPACE TO RECEIVE TOPSOIL AND SOIL. TOPSOIL MUST CONTAIN NO STONES, ROOTS, TRASH, ETC. AND MUST BE UNIFORMLY DISTRIBUTED TO RECEIVE SOO. PROVIDE AND INSTALL IRRIGATION SYSTEM AS REQUIRED. FOR LOCAL CLIMATE CONDITIONS.
- ⑥ 4" WOOD PAINTED TRAFFIC STRIPES WHITE
- ⑦ 6" THICK CONCRETE PAVEMENT
- ⑧ WHEEL STOP
- ⑨ CONCRETE FLARE

**PARKING REQUIREMENTS**

**REQUIRED PARKING**

**CAFE**  
 1 SPACE PER EMPLOYEE PLUS 1 SPACE FOR EVERY 3 SEATS

3 EMPLOYEES + 3 SPACES  
 24 SEATS + 4 SPACES

**CONVENIENCE STORE**  
 1 SPACE PER EMPLOYEE PLUS 1 SPACE FOR EACH VEHICLE PLUS 1 SPACE FOR EVERY 1,000 SF.

3 EMPLOYEES + 3 SPACES  
 0 VEHICLES + 0 SPACES  
 3,200 SF / 1000 = 3.25 4 SPACES

**TOTAL REQUIRED SPACES 14 SPACES**

**PROVIDED PARKING**

14 PARKING STALLS 14 SPACES  
 2 DISPENSER STALLS 2 SPACES  
 2 WHEELCHAIR STALLS 4 SPACES

**TOTAL PROVIDED SPACES 20 SPACES**

**BAY ST. LOUIS CONVENIENCE STORE**  
 1083 HIGHWAY 90, BAY SAINT LOUIS  
 HANCOCK COUNTY, MISSISSIPPI  
 CIVIL PERMIT SET

**SHEET REVISIONS**

1	DATE REFERENCE
2	23' SQUARE SIGN FT
3	9' SQUARES RANGE
4	9' SQUARES RANGE
5	21' SQUARES RAIL



**SHEET TITLE**

**SITE PLAN**

DATE: 07-14-2025  
 SHEET NUMBER: 3  
**C200**