

Dedicated to People Flow™



KONE MODERNIZATION PROPOSAL

Proposal:
Proposal Date:

Bay St. Louis Historic L & N Train Depot
4/25/2024



4/25/2024

KONE Inc.
Elevators & Escalators

30604 SGT E.I. "Boots" Thomas Drive
Spanish Fort, AL 36527
Trey Steber
251-583-4040
trey.steber@kone.com
www.kone.us

Dear Mr. Favre,

We are pleased to enclose, for your review and consideration, KONE's proposal to modernize your equipment located at the following address for the amount of **\$97,289.00** (incl. use tax):

Bay St. Louis Historic L & N Train Depot
1928 Depot Way
Bay St Louis, MS 39520

- This proposal is based on 2024 installation.
- This proposal is valid for (30) days.
- Anticipated downtime: 3 weeks per unit for modernization + inspection.

Please know that we are available to assist you in coordinating the work by others as further described in our "Bid Attachment B". Should you have any questions or require additional information, please feel free to contact me directly.

We look forward to hearing from you and working together on this project.

Yours sincerely,

A handwritten signature in black ink, appearing to be "Trey Steber", written over a horizontal line.

Trey Steber
Sales Executive - Modernization
Kone Inc



Table of Contents

1. Why KONE?4

2. Ensuring your project success5

 Project Overview5

 Site Cornerstones5

3. Your solution6

 Solution details6

 Elevator / Solution 16

4. Commercial Offer9

 Pricing9

 Additional Options for your Consideration Error! Bookmark not defined.

 Tender Approval 10

- Appendix 1: Clarifications
- Appendix 2: Bid Attachment “A” / KONE Inc. General Terms and Conditions (Modernization)
- Appendix 3: Bid Attachment “B” / Site Requirements & Work by Other Trades

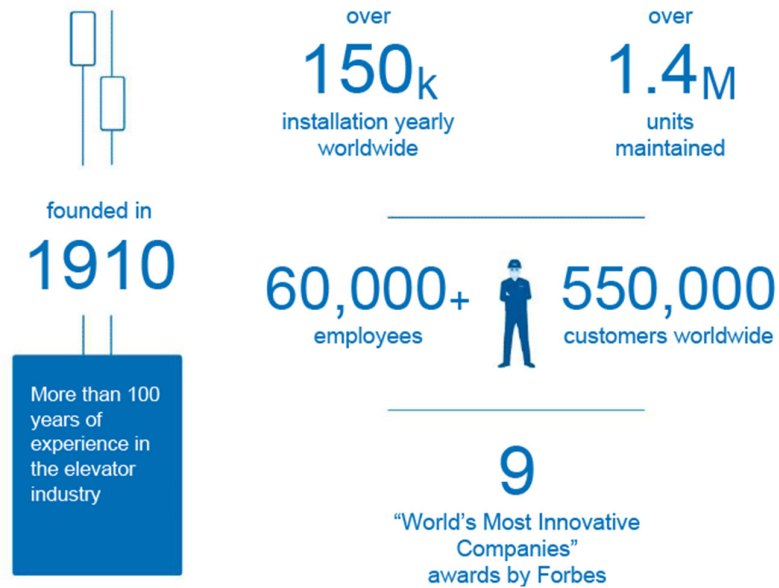


1. Why KONE?

KONE in brief

KONE is a global leader in the elevator and escalator industry. Our mission is to make cities better places to live.

Our versatile product portfolio features a wide range of innovative products including elevators, escalators, autowalks, monitoring, access and destination control systems.



Value for your project

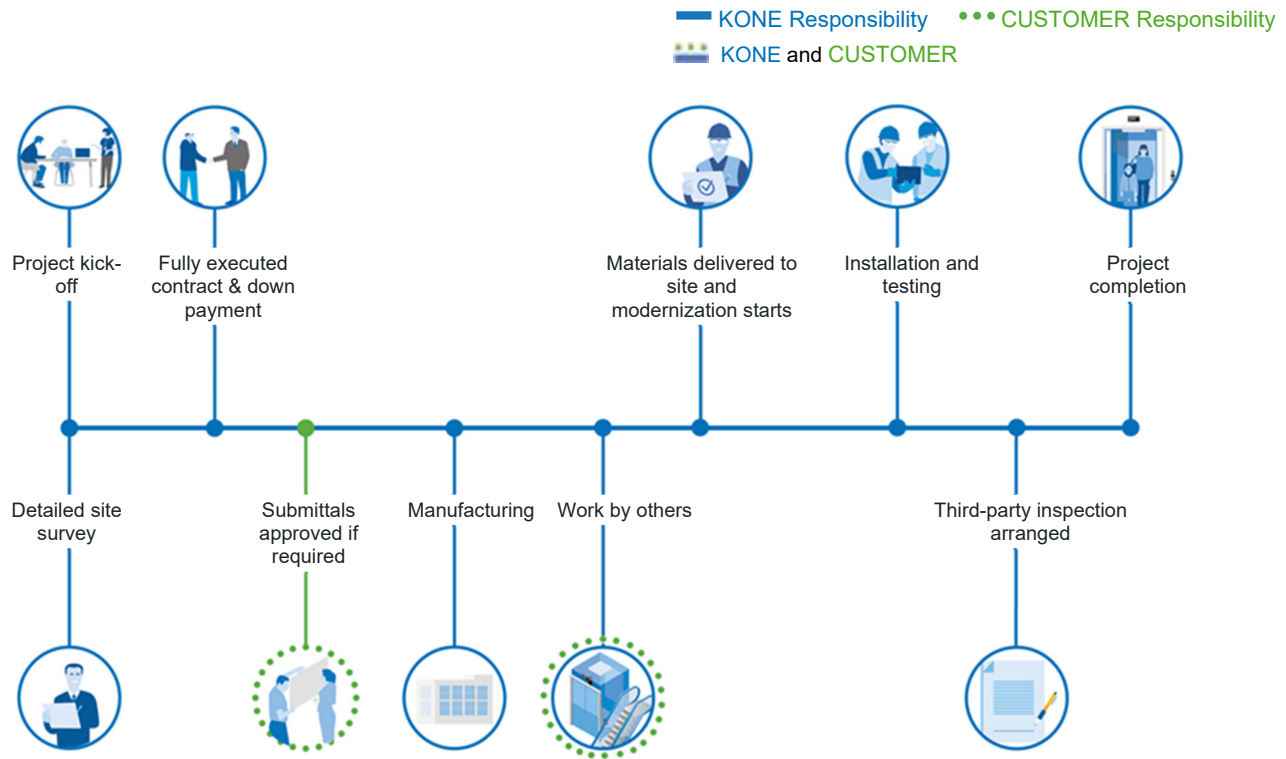
KONE helps you to reduce operational costs, increase end-user satisfaction and value of your building by providing accessible and safe equipment through a professional and trouble-free modernization project.

- ✓ Increased user satisfaction/minimal disturbance to end-users
- ✓ Improved eco-efficiency, reduced energy consumption
- ✓ Improved safety according to latest standards



2. Ensuring your project success

Project Overview



Site Cornerstones

By ensuring that these cornerstones are in place you can ensure that your modernization project stays on schedule and that KONE technicians can perform their work quickly, safely, and with minimum disruption to building operations.

1

Site preparation requirements before materials arrive

- Loading and storage area of suitable size for materials, waste and waste storage, and tools
- Safe access route for new materials and materials being removed
- Access permissions and cards or other access devices for KONE technicians

2

Other works as agreed in the project plan, if not managed by KONE

- Please refer to Appendix 4: Bid Attachment “B” / Site Requirements & Work by Other Trades



3. Your solution

Solution details

Elevator / Solution 1

A. Controller: Evolved by Smartrise Engineering

A non-proprietary serial link microprocessor controller as manufactured by Smartrise or approved equal. The Smartrise Evolved control platform is a leap forward in hydraulic elevators. Adaptive Slowdown saves time and money while giving passengers consistent rides throughout the journey. No custom software is required, most features are already built-in and are parameter adjustable making the installation times shorter and future changes easier. Software downloads and field setups can be done wirelessly, traveler cables are smaller than previous generations, and setting up the monitoring system is easier than ever. All leading to a more efficient, reliable installation. Technical training, engineering, and technical phone and field support is available to all KONE branch locations.

Controller inclusions:

- a. Adaptive Slowdown
- b. 3 Board System
- c. Serial Communication
- d. Solid State Starter
- e. Distance and Velocity Feedback
- f. Dispatching up to 8 car group
- g. NEMA 1
- h. Car top station
- i. Position indicator interface

B. Electrification Kit

All wiring and electrical interconnections will comply with governing codes. Insulated wiring is flame retardant complete with moisture-proof outer covering and will be run in conduit tubing or electrical wireways per code. Traveling and hoistway cables are pre-labeled to match the terminal name on the Smartrise Controller for ease of installation. This patterning also simplifies the wiring between the controller and the car top while thereby preventing wiring mistakes. It also makes checking connections easier. Cables come with Kellems® Grips.

The Electrification Kit is designed specifically for the KONE hydraulic package. The kit includes trough and conduit for both the hoistway and machine room as required. A job specific accessory kit is also included containing boxes, fittings, tape, wire nuts, etc. to meet existing job site condition requirements for the project. This allows for ease of installation and expedited modernization to limit downtime and building disruption.

C. Power Unit built by Alliance Elevator Solutions

Tank

The storage tank is constructed of minimum 12-gauge steel and shall be provided with a removable cover containing a removable oil dip stick. Welding is done robotically and complies with both AWS and CWB welding requirements. The pump and submersible motor shall be mounted on a reinforced isolation mount. The control valve shall be mounted in the discharge line above the oil level and easily accessible from the top of the tank. A muffler shall be provided at the control valve discharge.

Motor – ELMO

An ELMO type hydraulic, submersible motor will be provided. The motor shall be open-source equipment and of the alternating current, polyphase squirrel cage induction type and shall be of a design especially adapted to electro-hydraulic requirements.



Pump – IMO

An IMO pump will be housed within the submersible tank assembly. The pump will be a positive displacement screw type to give smooth operation and shall be specially designed and manufactured for elevator service.

Maxton Control Valve – Maxton

A Maxton control valve shall be provided as part of the tank assembly designed to match the requirements of the project specifications. Each Maxton valve is manufactured with a manifold up, down and check valve sections within the valve itself. A control section including voltage specific solenoid valves will direct the main valve and control up / down starting, transition from full speed to leveling speed, up and down stops, pressure relief, and manual lowering. Up and down leveling shall be controlled at the main valve sections. All of these functions shall be fully adjustable for maximum smoothness and to meet contract conditions. The manual lowering feature will permit lowering the elevator at slow speed in the event of power failure or for adjusting purposes.

Standard KONE power unit standard inclusions:

- a. Pre-mounted controller on tank unit
- b. Pre-wired motor to controller (removable to fit through tight spaces)
- c. Submersible – LH or RH configurations available
- d. Maxton Valve
- e. Elmo motor
- f. IMO pump
- g. Low pressure switch
- h. Internal shut-off valve
- i. Victaulic fittings
- j. Muffler assembly
- k. Hinged top with soft-close lid

Optional Adds:

- a. Isolation coupling
- b. Additional shut-off valves (Qty. 1)

D. Door Equipment – Wittur SGV Linear Operator + GAL Universal Kit

Door Operator – Car Side Equipment

A new, high performance Wittur SGV linear door operator will be supplied. The operator will be power operated by means of a direct current; linear belt-drive operator mounted on top of the car. The motor will have positive control over door movement for smooth operation. A universal bracket will be supplied for easy attachment of the door operator components to the cab enclosure shell.

A restrictive door clutch will be provided along with a mechanical car door side interlock to prevent opening of car door panels. A car door electric contact will prevent starting the elevator away from the landing unless the car door is in the closed position. A new stainless steel car door panel will be provided and manufactured for easy adaptation of newly provided door components to door panel itself.

New car door hangers and tracks will be provided. The hangers shall have minimum 3-1/4" diameter sheaves for safe efficient door opening.

Car Door Protective Device – 3D

The car door shall be provided with a 3D door protective device extending the full height of the cab entrance. An infrared type of car door protective device having a multi-beam array shall be furnished. This device shall be so arranged that should it sense a person or obstruction in its path while the doors are closing, it shall automatically cause the car and hoistway doors to return to the open position. The door shall remain open until the expiration of a time interval and then close automatically.

Complete Landing Side Equipment

Complete new hoistway landing side tracks, hangers, rollers will be provided at each hoistway landing entrance designed to match the existing job site configuration and design. The tracks shall be constructed of bar



formed steel with working surface contoured to match newly provided hanger rollers. The hangers shall be designed for power operation and have provisions for vertical and lateral adjustment. Hangers shall also be designed for two-point suspension of the door panel. Hanger rollers shall be polyurethane roller assemblies with pre-lubricated, sealed for life bearings to ensure smooth, quiet operation and minimize preventive maintenance requirements. All hoistway door hanger rollers shall have minimum 3-1/4" diameter sheaves.

Hoistway entrance landing doors will be reused. All new landing side door components will be built to easily adapt to the hoistway entrance landing doors.

New brushed stainless steel car door to be provided and installed.

E. Car and Hall Signal Fixtures - Innovation

Applied Car Operating Panel

An applied car operating panel shall be manufactured with 11 gauge #4 brushed 304 Stainless Steel face. Panel will contain a bank of mechanical illuminated buttons marked to correspond to the landings served, an emergency stop button, door open and door close buttons. The emergency call button shall be connected to a bell that serves as an emergency signal. Switches for lights and fan shall also be located in the car operating panel.

Phase II fire instructions are to be engraved or silk screened (applied plates are not acceptable) on the car operating panel or behind the fire cabinet door.

Elevator number, "No Smoking", and capacity in pounds are to be engraved or silk screened (applied plates are not acceptable) on the car operating panel.

Car operating panel shall contain all necessary operating components, buttons, and switches as required by ASME A.17.

Handicap Markings

Braille plates shall be furnished for car buttons, car controls, and hoistway entrance jambs in compliance with NEII and ADA handicap requirements.

Car Braille plates are to be flush mounted and permanently attached ("Stick-on" plates are not acceptable).

Audible Signal (to indicate stopping at a floor)

An audible signal shall sound in the car to tell a passenger that the car is stopping at the floor served by the elevator.

Hall Buttons

At each terminal landing a single push button shall be provided.

When a call is registered by momentary pressure on a landing button, that button shall become illuminated and remain illuminated until the call is answered. Buttons shall be open source, if serial link is provided, it shall be separate from button.

The designated fire return floor shall include a fireman's emergency key switch that meets state and local requirements.

ADA Telephone

An ADA approved telephone shall be provided and mounted behind the car operating panel. A pattern of holes for speaker shall be punched into the flush car operating panel faceplate or swing return panel (applied speaker grilles are not acceptable).

Necessary wires shall be included in the car traveling cable harness.

Connections to the building service system shall be furnished by Owner.



4. Commercial Offer

Project Specific Notes

Pricing Includes:

- Elevator permit and final inspection fee.
- New car and hoistway door roller guides, door gibs and fire tabs as required.
- New hydraulic fluid for the new system to include proper removal and disposal of the old hydraulic fluid.
- New packing for the jack head assembly.

Not Included / By Others:

- Any required building updates including but not limited to the electrical disconnects, outlets, pit lighting, fire alarm system and air conditioning/climate control of the equipment room.
- Patching and painting around the new hall fixtures as required.
- Dumpster service for proper removal and disposal of new equipment packaging and old elevator components. To be located within close proximity and rollable access of the elevator hoistway.
- Connex box for secure storage on site. To be located within close proximity and rollable access of the elevator hoistway.

Handover date

Mutually agreeable project schedule will be determined at time of proposal acceptance. Current delivery lead time is 16 weeks from when order receipt, deposit and approval of drawings have all been completed. The agreed delivery times for the project may need to be extended because of delays caused by measures undertaken to stop the spreading of the Coronavirus (2019-nCoV) epidemic, such as mandatory holiday extensions and transportation restrictions imposed by authorities in China and other countries, and the availability of personnel, logistics providers and supply chains, due to the epidemic.

Downtime period

3 weeks per unit

Warranty/maintenance

Pricing is based on the execution of a Kone service agreement to begin upon completion of the elevator modernization. Service agreement to be negotiated with your service sales representative.

Pricing

Total Sales Price, net including TAX \$ 97,289.00

Proposal pricing is based on the scope of work as defined herein. Any additional work required will be performed only upon purchaser's approval of a mutually agreeable change proposal. Any other deficiencies revealed in the progress of the work will be promptly reported to the purchaser with recommendations and cost for corrective action.



Tender Approval

We have read in full and accept the content of this Proposal and all attachments.

Project Name: Bay St. Louis Historic L & N Train Depot

Proposal No: T-0007373875

Total Sales Price: \$ 97,289.00

Customer

Date

Signature

Printed name



Appendix 2: Clarifications

1. Contract terms between KONE Inc. and Purchaser shall be based on our Proposal and Attachments "A" and "B".
2. All new elevator equipment provided shall meet applicable ASME A17.1 code requirements. Any provisions of codes applicable to out-of-scope items shall be the Purchaser's responsibility. Cost of any future code changes adopted prior to permitting and completion are excluded.
3. Existing cab and entrance dimensions, which may not meet current ADA or stretcher access rules, will be retained as is.
4. Our proposal includes inspections and testing as required by the AHJ. However, any re-testing required due to other trades' failures to complete their work or tests in a timely manner will be billed at our regular billing rates.
5. The ASME code limits changes to the empty car weight + capacity of each elevator to 5% of the originally installed value. If past or proposed changes result in a change to the weight or system pressure (for hydraulic) greater than 5% above the original design values, the cost of any engineering and of any required modifications to the elevator system or structure shall be extra to this proposal scope and pricing. If this situation is discovered during the engineering process, KONE will notify purchaser and recommend an alternate design or other changes.
6. In order to provide best pricing, proposal excludes any extra demobilizations and remobilizations. If we must demobilize from the jobsite for any reason outside our control, we shall be compensated at our regular billing rates.
7. Proposal pricing is based on the scope of work as defined herein. Any additional work required will be performed only upon Purchaser's approval of a mutually agreeable change proposal. Any other deficiencies revealed in the progress of the work will be promptly reported to purchaser with recommendations and cost for corrective action.
8. Asbestos: Notwithstanding anything contained to the contrary within this bid or contract, KONE's work shall not include any abatement or disturbance of asbestos containing material (ACM) or presumed asbestos containing materials (PACM). Any work in a regulated area as defined by Section 1910 or 1926 of the Federal OSHA regulations is excluded from KONE's scope of work without an applicable change order to reflect the additional costs and time. In accordance with OSHA requirements, the Customer shall inform KONE and its employees who will perform work activities in areas which contain ACM and/ or PACM of the presence and location of ACM and/or PACM in such areas which may be contacted during work before entering the area. Other than as expressly disclosed in writing, Customer warrants that KONE's work area at all times meets applicable OSHA permissible exposure limits (PELs). KONE shall have the right to discontinue its work in any location where suspected ACM or PACM is encountered or disturbed. Any asbestos removal or abatement, or delays caused by such, required in order for KONE to perform its work shall be the Customer's sole responsibility and expense. After any removal or abatement, customer shall provide documentation that the asbestos has been abated from the KONE work area and air clearance reports shall be made available upon request prior to the start of KONE's work.
9. Purchaser shall provide any security, escort or other building service support personnel required during demolition, installation, testing, and inspections.
10. For hydraulic elevators, we can assume no responsibility for unusual conditions such as hole cave in and complete hydraulic cylinder assembly embedded in concrete. The excavation of the hole to accommodate the new hydraulic cylinder assembly is based on encountering soil free of oil, rocks, boulders, building construction members, sand, water, quicksand, underground caves and/or any other obstructions or unusual conditions. Should such obstructions or unusual conditions be encountered, additional time above or beyond the working days estimated to complete this project may be required. We will proceed with this portion of the project on a time and material basis, based on our normal billing rates.
11. Proposed solution is subject to a complete engineering review by KONE engineering team to confirm feasibility of products proposed. Additional charges may apply for work not included but required to meet system requirements. Additional charges for this work (if applicable) shall be mutually agreed upon.



Appendix 3: Bid Attachment “A” / KONE Inc. General Terms and Conditions (Modernization)

1. APPLICATION OF THESE TERMS

The parties agree to be bound by the terms and conditions contained in the Bid Letter, this Bid Attachment A and Bid Attachment B, including the documents incorporated herein by reference (collectively, the “Proposal”).

2. SPECIAL PURCHASING REQUIREMENTS

This Proposal is made without regard to compliance with any special sourcing and/or manufacturing requirements including, but not limited to, Buy America, Buy American, U.S. Steel, FAR clauses, minority / disadvantaged supplier requirements or similar federal and/or state procurement laws. Should such requirements be applicable to this Project, KONE reserves the right to modify and/or withdraw its Proposal.

3. PROPOSAL CONDITIONS

The Proposal shall be open for acceptance within the period stated in the Bid Letter or, when no period is stated, for a period of 30 days from the date of the Bid Letter. Prior to commencing manufacture of the equipment described in the Bid Letter (“Equipment”), KONE must have (i) a fully executed contract; (ii) a schedule acceptable to KONE identifying the Equipment installation start date, or alternatively, KONE’s letter specifying the ship date (“Ship Date Letter”) signed by Customer, which, as applicable, is incorporated by reference herein; (iii) the first payment in Section 4 herein; and (iv) fully approved KONE layouts.

4. PAYMENT TERMS

Payment of the total Price is due within 30 days from invoice date, as follows:

- 30% of the Price for engineering, site management, and overhead, billable and due upon execution of this Proposal or receipt of the subcontract.
- 50% of the Price for material and shipping, billable and due upon delivery of material to the jobsite or KONE Distribution Center.
- 20% of the Price for Equipment installation, billable and due at the billing cycle following the start of installation.

KONE imposes a surcharge for payments made via credit card that is not greater than our cost of acceptance. The surcharge that we impose for this type of transaction is a percentage of the amount paid via credit card, which will be notified to the Customer at the payment portal. KONE reserves the right to delay, suspend, or stop the work, including manufacturing, delivery, installation and/or Equipment turnover, for non-payment, without liability to KONE or being held in default. Simple interest at 1.5% per month shall be charged on amounts not paid when due. Payments to KONE are not contingent on any third-party payments to Customer. Customer shall reimburse KONE for all costs of collection, including courts costs and reasonable attorneys’ fees.

Prior to turnover, KONE must be paid in full, less 10% maximum retention, the Price including all change orders. Retention shall be due and payable within 30 days of execution of the Uniform Final Acceptance or Equipment turnover, whichever occurs first. If certified payroll reporting is required, KONE will submit the requested reporting in the format of the U.S. Department of Labor form WH 347 & WH 348. The Price does not include Textura or any other special billing requirements, which can be added via change order at a rate of 0.3% of the Price.

5. INSTALLATION

Customer shall be responsible for procurement and cost of all permits, except permits related to installation of the Equipment. Where KONE’s scope of work or other responsibilities include the obligation to utilize materials and/or finishes resembling or identical to those pre-existing in the building, KONE shall use reasonable efforts to procure such materials and Customer acknowledges and accepts that the materials and/or finishes reasonably available may not be in all respects identical to those pre-existing in the building. This Proposal is conditioned upon KONE using its standard installation method. The installation of the Equipment shall start after Customer has completed all work set forth in Bid Attachment B and any other documents describing site requirements (“Site Requirements”), all of which are incorporated by reference herein. Within two (2) weeks prior to the scheduled delivery date for KONE’s materials, KONE shall conduct a standard visual site survey to verify that the Site Requirements are complete and notify Customer if there are outstanding deficiencies preventing KONE from beginning installation.

KONE’s site survey may include, but is not limited to, inspection of site access, working and safety conditions on site, wear and tear of any existing structures or surfaces, and planning of any dismantling or removal of existing equipment, components and materials, where applicable. KONE shall not be deemed to have surveyed any hidden structures, latent defects, subsurface conditions, or other non-visible matters, including but not limited to searching for hazardous substances and/or materials, which shall be subject to Section 16. If KONE’s site survey reveals any deficiencies, KONE shall be entitled to delay the start of installation and Customer shall be responsible for all additional costs incurred by KONE, including without limitation, costs associated with labor reallocation, re-directing materials to and storage in a KONE Distribution Center, additional labor for double handling of materials, and additional trucking, freight and insurance. Once the Site Requirements are completed, the start of installation shall be subject to the availability of labor and the delivery of material, if applicable.

KONE’s work shall be performed during regular union working hours of regular working days, Monday to Friday, statutory holidays excluded. If overtime is mutually agreed upon and performed, the additional costs for such work shall be added to the Price at KONE’s standard overtime rates. If the installation cannot be performed in an uninterrupted manner for any reason beyond KONE’s control, Customer shall store the Equipment at Customer’s cost and compensate KONE for any costs caused by such delay including, but not limited to, double handling of Equipment and demobilization. KONE shall not be required to perform overtime, or any Customer directed change to its work (“Extra Work”) without an executed change order. No action by KONE, including but not limited to, performing Extra Work without an executed change order, shall be a waiver of KONE’s right to seek payment for Extra Work performed.

KONE shall be entitled to an extension of time and an equitable adjustment in the Price, including but not limited to, any increased costs of labor, including overtime, resulting from any change of schedule, re-direction of KONE personnel to another work area, acceleration, or out of sequence work.

KONE shall take reasonable methods to protect its work-in-place while KONE is actively on site and until execution of a KONE Uniform Final Acceptance, which is incorporated by reference herein. Should damage occur to KONE property, material or work-in-place by fire, water, theft or vandalism, Customer shall compensate KONE for said damages.



Additionally, the Customer is solely responsible for ensuring that the equipment maintenance contractor, if not KONE, does not disturb, delay or interfere with KONE's work. KONE shall abide by Customer's safety policies and procedures to the extent such policies and procedures are not in conflict with KONE's Safety Policy. Testing and/or security features of Equipment must be completed before Equipment turnover. KONE is not responsible for damages, either to Equipment or the building, or for any personal injury or death, arising out of or resulting from any code required safety tests performed on Equipment or hoistway access granted by Customer to other trades.

6. TEMPORARY USE

Temporary use of certain types of Equipment may be permitted, provided the use period allows adequate time for Equipment restoration for final turnover and Customer executes KONE's Temporary Use Agreement. Temporary use shall be invoiced separately and subject to payment terms in Section 4 herein. At the end of temporary use, Customer shall return the Equipment to KONE in "like new" condition.

7. HAZARDOUS MATERIALS

KONE's work shall not include any abatement or disturbance of asbestos containing material ("ACM"), presumed asbestos containing materials ("PACM"), or other hazardous materials (i.e. lead, PCBs) (collectively "HazMat"). KONE shall have the right to discontinue its work in any location where suspected HazMat is encountered or disturbed. Any HazMat removal or abatement, or delays caused by such, required in order for KONE to perform its work shall be Customer's sole responsibility and expense. Should any HazMat abatement occur within the shaft or machine room, Customer shall execute KONE's Hoistway or Pit Access Request. If any HazMat is known to be present on site before the start of work, HazMat removal or abatement shall be completed prior to KONE scheduling installation and delivering material.

8. TITLE AND RISK TO EQUIPMENT

Title to and ownership of all Equipment intended for incorporation in KONE's work, whether installed or stored on or off site, shall remain with KONE until final payment is made. Risk of loss in KONE's work and Equipment passes to Customer upon delivery to the site or off-site storage.

Any tools, devices, or other equipment that KONE uses to perform its work or monitor the Equipment remains the sole property of KONE. If this Proposal terminates or expires for any reason, Customer will give KONE access to the premises to remove such tools, devices or equipment at KONE's expense.

9. TURNOVER

Prior to turnover, KONE must receive a final punch list. Upon turnover, KONE requires a signed Uniform Final Acceptance. KONE shall provide its standard electronic O&M manuals with CD-ROMs in electronic format, if applicable, upon execution of the Uniform Final Acceptance. Standard KONE samples shall be provided upon request. No mock-ups or video training are included in the Price.

10. DELAY

KONE shall not be liable for any loss, damage, claim, or delay due to any cause beyond KONE's control, including, but not limited to, acts of domestic or foreign government (including a change in law), strikes, lockouts, work interruption or other labor disturbance, delays caused by others, fire, explosion, theft, floods, inclement weather, riot, civil commotion, war, malicious mischief, infectious diseases, epidemic, pandemic, quarantine, border or port of entry and exit restrictions or acts of God.

In the event of such delays, KONE shall be entitled to an extension in time equal to the length of such delay affecting KONE and an equitable adjustment in the Price. Customer shall compensate KONE for labor and material cost escalations resulting from Project delays not caused by KONE, which extend completion of KONE's work beyond the end of the current calendar year. Customer is on notice that IUEC labor rates increase annually.

11. LIMITED WARRANTY

For one (1) year after the acceptance date set forth in the signed Uniform Final Acceptance, date of Equipment turnover, or date of Customer's use of Equipment (unless such use is pursuant to the Temporary Use Agreement), whichever occurs first, KONE warrants Equipment against defect in workmanship and material. The warranty excludes remedy for damage or defect caused by abuse, misuse, vandalism, neglect; repairs, alteration or modifications not executed by KONE; improper or insufficient maintenance, improper operation, characteristics of the building such as electrical power or security features, natural or other catastrophe such as flood, fire, or storm, or normal wear and tear and normal usage. The warranty excludes training or instruction in the proper operation or maintenance of Equipment. Specific noise ratings and energy efficiencies cannot be guaranteed due to different building characteristics and ambient noise levels. Customer's remedy is limited to repair or replacement of a defective part, in KONE's sole discretion, and excludes labor.

12. INDEMNIFICATION

KONE shall only indemnify and hold Customer harmless for claims, damages, losses or expenses, but excluding loss of use ("Claims") due to bodily injury, including death, or tangible property damage (other than the Project or KONE's work itself) to the extent caused by KONE's negligent acts or omissions. KONE shall not indemnify Customer for any other Claims. Customer agrees to indemnify and hold KONE harmless from any Claim for bodily injury, including death, or tangible property damage in connection with the use or operation of the Equipment. Each party shall defend itself in the event of a Claim.

13. INTELLECTUAL PROPERTY

KONE shall retain title and ownership of all intellectual property rights relating (directly or indirectly) to the Equipment provided by KONE, including but not limited to software or firmware (whether in the form of source code, object code or other), drawings, technical documentation, or other technical information delivered under the Proposal. KONE grants Customer a non-exclusive and non-transferable license and right to use the software and firmware in connection with the use and maintenance of the Equipment. Customer shall not use any drawings, technical documentation or other technical information supplied by or on behalf of KONE for any purposes other than those directly related to the Proposal or to the use and maintenance of the Equipment. Customer shall not in any form copy, modify or reverse engineer the software, or give access to the software for such use to any third party without KONE's prior written consent.



14. INSURANCE

In lieu of any Customer insurance requirements, KONE shall provide its standard certificate of insurance, which shall be deemed to satisfy all insurance requirements for this Project. KONE shall not provide loss runs, insurance rate information, copies of its insurance policies or any other information which KONE considers confidential. KONE shall not provide coverage for professional (E&O) liability, pollution liability, data privacy/security, or no-fault medical payments. If the Project is covered by a Wrap Up Insurance Program, KONE agrees to participate provided there is no cost to KONE, no reduction in the Price, and subject to KONE's review of the proposed program. If KONE's primary limits are sufficient to satisfy insurance coverage requirements, excess/umbrella liability will not be required or if excess/umbrella is required, KONE's excess coverage does not follow form although typically provides broader coverage than KONE's primary policies. The excess coverage is not AM Best Rated nor licensed to do business within the jurisdiction although the carrier has strong Standard & Poor's and Moody's financial ratings that may be evidenced upon request.

15. LIMITATION OF LIABILITY

In no event shall either party be liable to the other party for any consequential, special, punitive, exemplary, liquidated, incidental, or indirect damages (including, but not limited to, loss of profits or revenue, loss of goodwill, loss of use, increase in financing costs) (collectively, "Consequential Damages") that arise out of or relate to this Proposal even if such party has been advised of the possibility of such Consequential Damages. The limitation set forth in this section shall apply whether the claim is based on contract, tort or other theory.

16. CONCEALED OR UNKNOWN CONDITIONS

If during the course of its work, KONE encounters conditions at the site that are subsurface, differ materially from what is represented in the contract documents, or otherwise concealed physical conditions, KONE shall be entitled to an extension of time and additional costs for the performance of its work, which shall not be subject to any payment conditions or contingencies.

17. TECHNICAL SURVEY

KONE's Price and obligations under this Proposal are subject to a technical survey to be performed on Customer's existing units within 90-days of the effective contract start date. If a safety hazard or code violation is identified during KONE's technical survey, Customer shall immediately remove the unit from service until repairs are performed. KONE is not obligated to perform tests, correct outstanding violations or deficiencies that were not addressed by the prior service provider and/or the owner, or make related necessary repairs or component replacements on the unit. If additional work is necessary, KONE shall provide a separate proposal or recommendation for such work. Customer agrees to indemnify, defend, and hold KONE harmless for any claims arising out of Customer's failure to comply with KONE's recommendations and proposal, and any obligation on the part of KONE to indemnify or defend Customer with regard to such claim shall be null and void. If Customer does not immediately approve KONE's proposal or recommendation, KONE reserves the right to terminate this Proposal/contract without penalty.

18. TERMINATION

If a party materially breaches this Proposal, the other party shall provide written notice of the breach and a reasonable time to cure the breach, but in no event less than 30 days. If the breaching party fails to cure the breach within the specified time period, the non-breaching party may terminate the Proposal upon 15 days written notice to the other party. If KONE notifies Customer of a material breach pursuant to this paragraph, KONE may temporarily suspend its work without liability.

19. GOVERNING LAW AND DISPUTE RESOLUTION

The parties agree that this Proposal shall be governed by the laws of the state where the Project is located, and venue for disputes shall be located in that state. KONE does not agree to participate in arbitration proceedings.

20. PRICE ADJUSTMENT

KONE shall be entitled to an equitable adjustment in the Price, including but not limited to, any increased costs between the time the Contract is signed and the date of manufacture for materials, labor, or shipping, as well as increased costs resulting from any change in law or tariffs.

21. 24/7 EMERGENCY VIDEO COMMUNICATIONS

Applicable only for projects where KONE 24/7 Emergency Video Communications is included: The KONE 24/7 Emergency Video Communications contract addendum and General Terms and Conditions for KONE Digital Services must be signed by the Building Owner. This contract addendum requires the Building Owner to pay a fee for audio, video, and data connectivity. This payment obligation, among other provisions, survives termination of any maintenance agreement.

22. MISCELLANEOUS

This Proposal, including the documents incorporated herein by reference, constitutes the entire agreement of the parties and supersedes all prior negotiations, understandings, and representations whether written or oral in relation to the subject matter hereof. Where a conflict or ambiguity exists between this Proposal and any other contract document (including but not limited to, Customer's drawings and specifications), the terms and conditions of this Proposal shall control. This Proposal may be amended only in writing by the duly authorized representative of both parties. This Proposal may be executed in one or more counterparts. Each counterpart shall be considered an original and all of the counterparts shall constitute a single agreement binding all the parties as if all had signed a single document. For purposes of executing this Proposal, a document signed by electronic means is to be treated as an original document. The failure of either party to insist upon performance or strict performance of any of the terms or conditions of this Proposal shall not be deemed a waiver of any rights or remedies that such party may have or a waiver of any subsequent breach or default under this Proposal. Neither party may assign or transfer the benefit or burden of this Proposal without prior written consent of the other party.



Appendix 4: Bid Attachment “B” / Site Requirements & Work by Other Trades

The work described below is a summary of work to be performed by others (“Work by Other Trades”) that may be required in conjunction with the elevator modernization performed by KONE (the “Work”). Purchaser shall provide any and all building electrical, structural and mechanical system upgrades required for code compliance, life safety, and proper equipment installation and operation. The Authorities Having Jurisdiction (AHJ) may require additional remedial or preparatory work. All required remedial or preparatory work shall be performed by properly licensed trade contractors in compliance with applicable codes and based on a schedule of performance that allows for uninterrupted progress of the Work. Under no circumstances shall KONE be responsible for any cost associated with the performance of remedial work by others. Purchaser shall provide the following unless specifically included in KONE’s Work:

1. ELECTRICAL

- A properly rated three phase fused disconnect switch, externally operable and lockable in the open position, located as required by code. Accommodate any increases in motor size or feeder loads.
- A dedicated 110 VAC fused disconnect switch, externally operable and lockable in the open position adjacent to the machine room door for cab lighting and ventilation, located as required by code.
- Shunt-trip disconnect if fire sprinklers are present in machine room or hoistway.
- GFI 120 VAC convenience outlets in machine room and pit.
- Separate outlet in the pit area if a sump pump is installed.
- Telephone line service brought to the elevator machine room for emergency communication device.
- Any required RF shielding of TV or radio transmitters, antennae and/or wave-guides.
- Conduit with pull boxes from each elevator bank to any remote fire control or communication panels specified.
- Provide a separate 15-amp, 115 VAC fused service with ground (powered by building emergency power system, when available) for KONE 24/7 Emergency Communications, when specified. Must include the means to disconnect each service and lock-off in the “open” position (NFPA 70 article 620.22 and 620.53 or CEC article 38.22 and 38.53).

If required by building code: standby/emergency power, sufficiently sized to provide power of permanent characteristics to each elevator’s disconnect, simultaneously, upon loss of regular power, including feeders, transfer switches and auxiliary contact signal outputs to elevator controllers.

2. MACHINE ROOM

- A code-compliant machine room. Provide or maintain fire rating as required by building code.
- Fire-rated door for access into the machine room. Door shall be self-closing and self-locking, operable from inside the room without the use of a key.
- Independent ventilation or an air conditioning system for the elevator machine room, to assure temperature is maintained between 65 degrees and 95 degrees Fahrenheit.
- Fire extinguisher inside machine room.
- Minimum clear machine room height of 7’-0”.
- Suitable lighting that provides a minimum of 19 ftc at floor.
- Removal of any non-elevator related equipment and materials from within the machine room and proper disposal of oil and other hazardous or non-hazardous substances and materials.

3. HOISTWAY

- A code-compliant hoistway, constructed in accordance with KONE’s requirements and specifications. Provide or maintain fire rating as required by building code.
- Patching of all holes in hoistway walls with fire rated material.
- Beveling all ledges within hoistway measuring over 4”.
- Removal of any non-elevator related equipment and materials from within the hoistway and proper disposal of oil and other hazardous or non-hazardous substances and materials.
- A guarded light fixture and light switch in pit. Switch must be located 42” above the lowest landing floor level.
- A means of displacing water located in the pit and containing and disposing of oil, chemicals, and other substances in compliance with environmental laws and regulations (KONE assumes no responsibility for discharge of oil, chemicals, and other substances into storm water systems, sanitary sewer systems, retention ponds, etc.). Elevator hoistway ventilation to the outside atmosphere as required by building code.

4. FIRE SERVICE

- Fire alarm smoke detectors with wiring and relays in the machine room terminating at elevator controller.
- Fire alarm initiating devices must be located in front of each elevator entrance as well as in the machine room and at the top of the hoistway.
- Where sprinklers exist in the machine room and/or hoistway, a fire alarm initiating device within 12” of each sprinkler head.



5. ACCESS INTEGRATION/SECURITY

- Our proposal includes KONE logic and provisions for the specified Touchscreen(s), Keypad Destination Operating Panel(s), Monitoring System(s) and Multi-Media Equipment.
- Card Readers and/or any additional required hardware & software for proper functionality of access control/security system(s) shall be furnished and installed by others.
- Any required software to ensure proper communication between KONE control system(s) and building system(s) shall be the responsibility of others.
- A designated 115V 15A circuit is required at each of the remote monitoring stations.
- KONE recommends a minimum 100 Mbit/s Ethernet for each of the following application(s): Integrated Touchscreen/Keypad Destination Operating Panels, Monitoring System, Multi-Media Equipment, and Card Readers.

6. COUNTERWEIGHTING

- Pricing is based upon the existing car to counterweight weight ratio being consistent with elevator industry standards. This is defined as the counterweight weight being equal to the empty car weight plus 40%. The actual assemblies will be weighed during the modernization process. If modifications are required to correct the existing weight balance, these modifications will be provided at additional cost.

7. RK1 FUSES AND CIRCUIT BREAKERS

- Fuses are to be current limiting class RK1 or equivalent. Circuit breakers are to have current limiting characteristics equivalent to RK1 fuses. Provisions of these fuses are the responsibility of others, not KONE.

8. GENERAL

- Access to the building to perform the Work and for deliveries with dry, protected storage adjacent to the hoistway.
- Cutting of existing walls, floors and finishes, together with all repairs made necessary by such cutting or changes, e.g. cutting of lobby walls for flush hall fixtures and removal of encroaching lobby features such as wall-mounted ashtrays. Removal, replacement, and/or repair of any mirrors, millwork, plaster, stone or other special hall finishes.
- All work of other trades must be complete and ready at time of first elevator inspection, or elevator will not be released for operation by the AHJ. If the AHJ does allow temporary operation under a Temporary Operating Inspection (TOI), any associated costs shall be Purchaser's responsibility.
- Our tender is based on suitable site conditions, material and tooling storage space, and bathroom access being available on site.
- Safe working environment must be provided and supported by provision for adequate entrance protection, means of hoisting, hoistway dividing screens, and protection of floors walls and doors etc.
- Emergency evacuation procedures to be clearly defined where required. Subject to site survey and actions agreed.
- Any portion of the Work that is subject to the permissions of local authorities beyond the elevator permits must be identified to KONE. Responsibility for permits to be agreed. Permits and appropriate signage indicating any changes to pedestrian access routes for building users must be in place prior to start of the Work.
- Elevator installation methods requires the integrity of the existing Safety Gear and Overspeed protection devices, and are therefore subject to verification of suitability prior to commencement of the work. Any remedial work required or alternative solution is not included in this tender.
- If KONE 24/7 Emergency Video Communications: For units with travel greater or equal to 60 ft (18 m), or if located in a seismic zone and the code year is 2016 or later (regardless the travel): Customer will provide a dedicated Windows-based PC or laptop with Chrome browser and 24-hour/day Internet access. This computer must be accessible by emergency personnel to communicate through voice and text with people in the elevator and to have a video display of the cab interior.