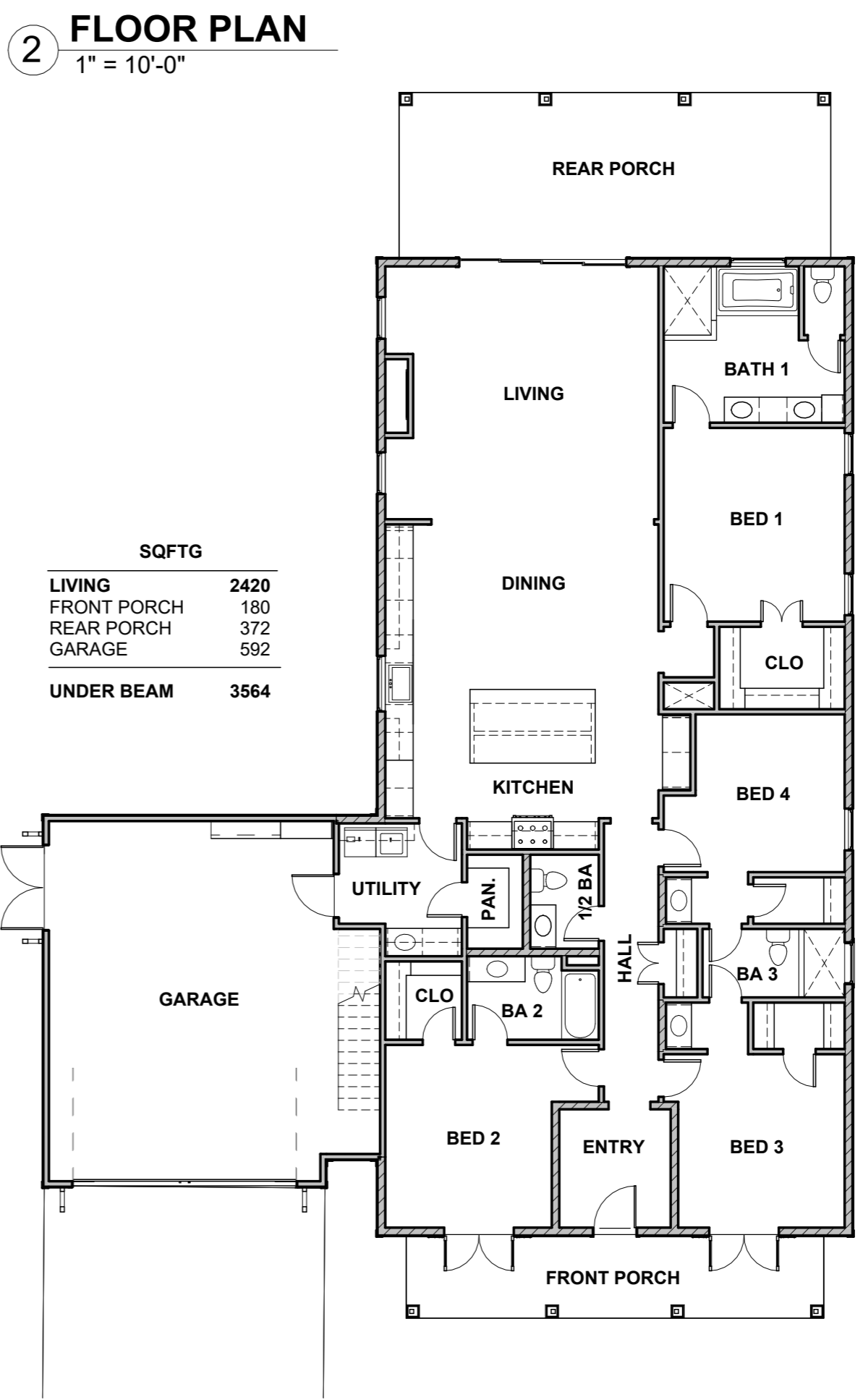


ZONE: R-1 RESIDENTIAL SINGLE FAMILY
MAX COVERAGE: 45%

FRONT YARD SETBACK: 25'-0"
SIDE YARD SETBACK: 8'-0"
REAR YARD SETBACK: 20'-0"

MAX BUILD HEIGHT: 35'-0"



	SQFTG
LIVING	2420
FRONT PORCH	180
REAR PORCH	372
GARAGE	592
UNDER BEAM	3564



504-452-6974
2107 Nicholson Avenue, Suite B
Waveland, MS 39576
<https://benfatticonstruction.com/>

HISTORIC - 611 HANCOCK
611 HANCOCK STREET, BAY ST. LOUIS, MS 39520
DO-MAR LLC

Drawn by:
COLT LEE

09/24/25

SITE / FLOOR PLAN

1 of 3

Scale As indicated

HISTORIC - 611 HANCOCK

611 HANCOCK STREET, BAY ST. LOUIS, MS 39520
DO-MAR LLC

Drawn by:
COLT LEE

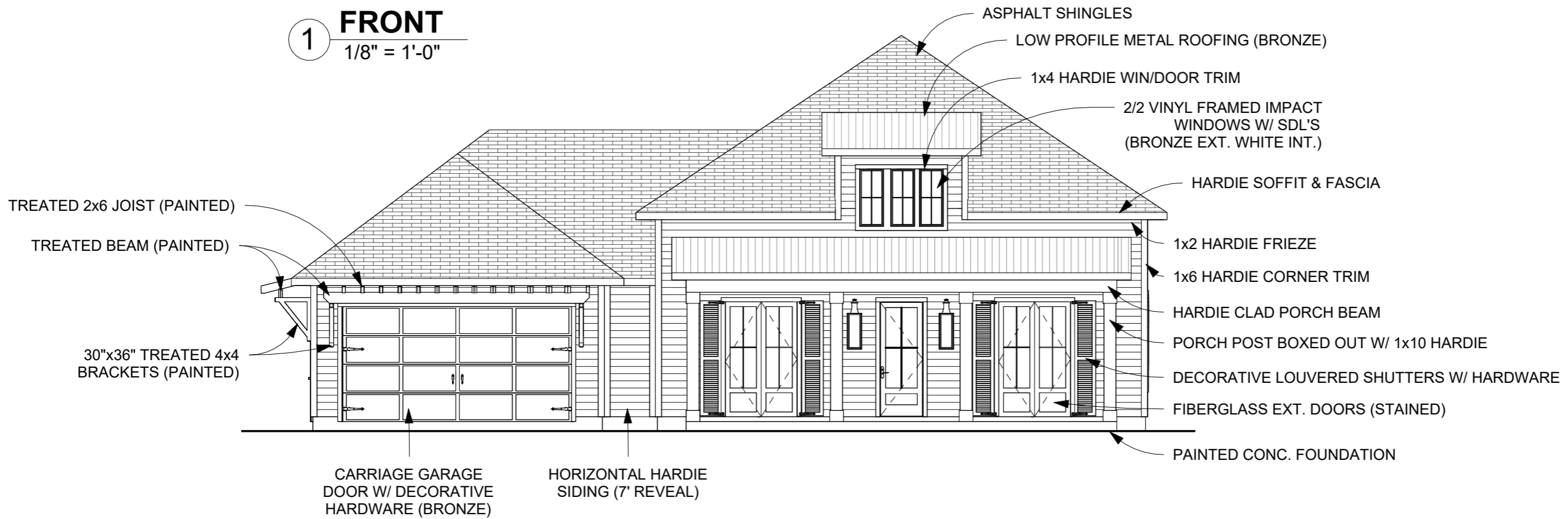
09/24/25

ELEVATIONS

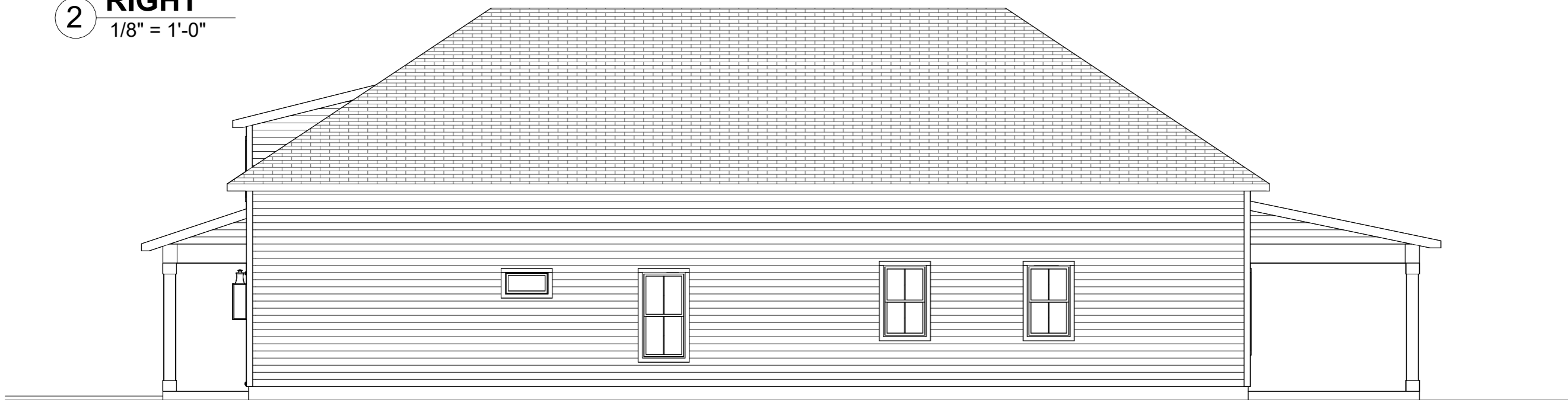
2 of 3

Scale 1/8" = 1'-0"

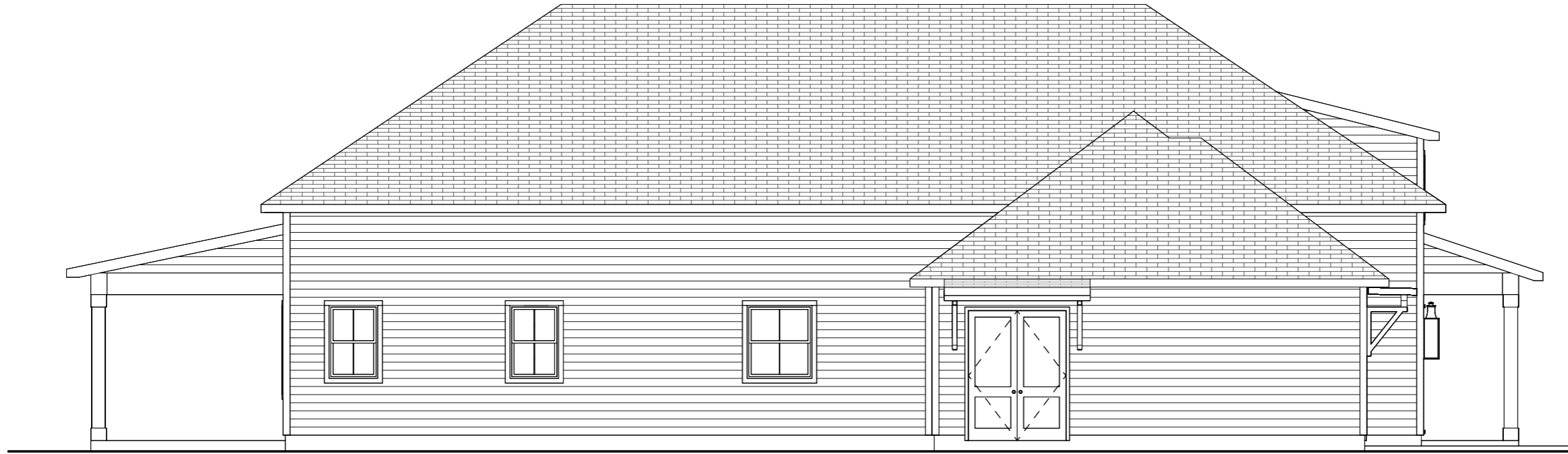
1 FRONT
1/8" = 1'-0"



2 RIGHT
1/8" = 1'-0"



1 LEFT
1/8" = 1'-0"



2 REAR
1/8" = 1'-0"



HISTORIC - 611 HANCOCK
611 HANCOCK STREET, BAY ST. LOUIS, MS 39520
DO-MAR LLC

Drawn by:
COLT LEE

09/24/25

ELEVATIONS

3 of 3

Scale 1/8" = 1'-0"