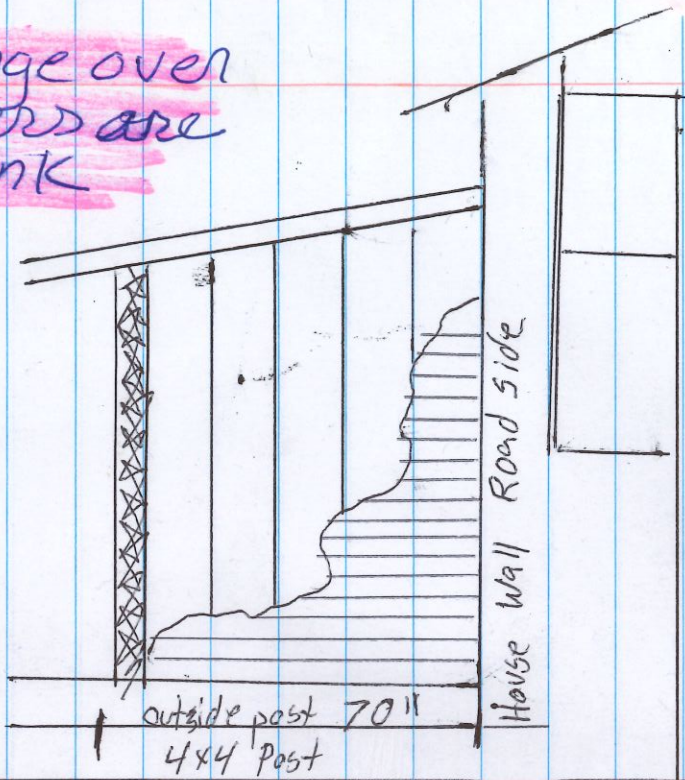


TURN PAGE OVER  
ANSWERS ARE  
IN PINK



# 9/3/25 New Answers

Post are 4x4

Joist 2x6 2' OC

2x6 Decking

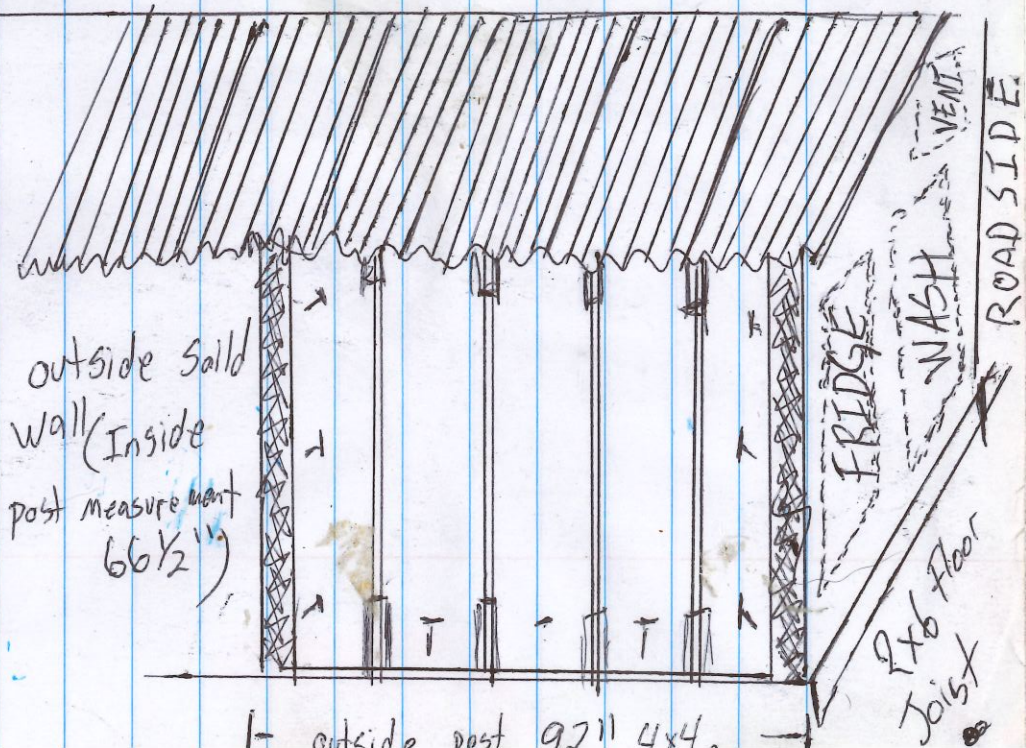
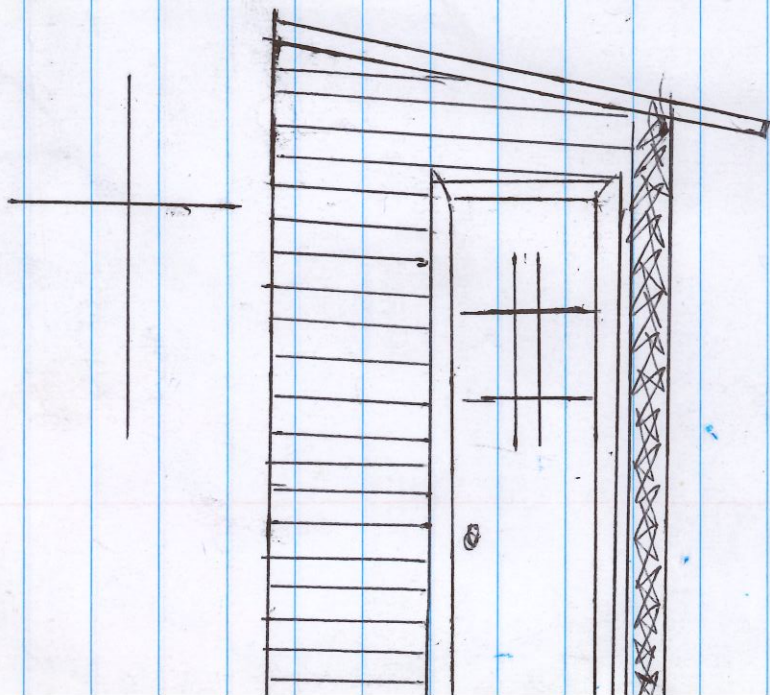
Using treated studs 16" OC

Treated ply with Tyvek

And Siding / Wind ties

Wall straps / Hangers For Roof Joist (2x4)

Construction screws to attach walls



outside post 92" 4x4