

Bill To: City of Bay St. Louis
P.O. Box 2550
Bay St. Louis, MS 39521
228.466.5450 - 228.466.5451
Fax: 228.466.5506

PURCHASING REQUISITION
City of Bay Saint Louis

Req By: Debbie Delcuze /

Ship To: _____

Auth By: _____

Vender Info: Puckett Machinery

Charge to Acct: Utilities

402-700-900-000

Apprvd By: _____

Received: _____

Date	Delivery Date	Ship Via	Project #	Requisition #	Purchase Order #
July 17, 2025			Mini Excavator		
Description of Material			QTY	Price	Amount
CAT 303 07A CR Mini Excavator			1		46,002.81
SEAT, SUSPENSION, VINYL UNDERCARRIAGE, FIXED, STD BLD CONTROL,					
1ST AUX, JOYSTICK CWT, STANDARD STICK, STD W/THUMB BRACKET ALARM,					
TRAVEL TRACK_RUMMER, 12" LINKAGE BUCKET, W/LIFTING EYE PRODUCT LINK,,					
CELLULAR PL243 LINES, 1ST AUX, STD STICK BLADE, FIXED, BOCE MONITOR					
NEXT GEN, NO CAMERA CANOPY, ROPS SEAT BELT 3" RETRACTABLE 16" HD BUCKET					
WARRANTY _ 24 MONTH / 2,000 HOUR TOTAL MACHINE					
TOTAL					46,002.81





QUOTE

TO: CITY OF BAY ST LOUIS

Date: July 2, 2025

Puckett Rents is pleased to submit the following quotation for your consideration:

NEW	CAT 303		\$46,002.81
1	303 07A CR MINI EXCAVATOR	\$	46,002.81
	SEAT, SUSPENSION, VINYL	\$	-
	UNDERCARRIAGE, FIXED, STD BLD	\$	-
	CONTROL, 1ST AUX, JOYSTICK	\$	-
	CWT, STANDARD	\$	-
	STICK, STD W/THUMB BRACKET	\$	-
	ALARM, TRAVEL	\$	-
	TRACK, RUBBER, 12"	\$	-
	LINKAGE BUCKET, W/LIFTING EYE	\$	-
	PRODUCT LINK, CELLULAR PL243	\$	-
	LINES, 1ST AUX, STD STICK	\$	-
	BLADE, FIXED, BOCE	\$	-
	MONITOR NEXT GEN, NO CAMERA	\$	-
	CANOPY, ROPS	\$	-
	SEAT BELT 3" RETRACTABLE	\$	-
	16" HD BUCKET	\$	-

WARRANTY

24 month / 2,000 hour total machine

FINANCE OPTIONS:

60 month / 500 hr Gov't Lease: Payment \$803.18, Interest 5.49%, Purchase Option \$16,960

60 month / 1,000 hr Gov't Lease: Payment \$824.09, Interest 5.49%, Purchase Option \$15,520

QUOTE VALID FOR 30 DAYS

Thank you for this opportunity. We look forward to continued business with you.

Sincerely,

JOSH PARKER

Sales Representative

Cell: (601) 750-7373

RICHLAND
Puckett Rents
406 Hwy 49 South
Richland, MS 39218
(601)939-5151

HATTIESBURG
Puckett Rents
7182 Hwy 49 North
Hattiesburg, MS 39402
(601)264-1111

BILOXI
Puckett Rents
9207 W Oaklawn Rd
Biloxi, MS 39532
(228) 392-2211

MERIDIAN
Puckett Rents
3300 Jimmie Rodgers Pkwy
Meridian, MS 39301
(601) 703-0116

MADISON
Puckett Rents
608 Church Rd
Madison, MS 39110
(601) 859-5131

NATCHEZ
Puckett Rents
683 Hwy 61 N
Natchez, MS 39120
(601) 442-1633



Cat® 303 CR

MINI EXCAVATOR

FEATURES:

The Cat® 303 CR Mini Excavator delivers power and performance in a compact size to help you work in a wide range of applications.

ALL DAY COMFORT

- Choose either a canopy or a sealed and pressurized cab which can be equipped with air conditioning, adjustable wrist rests, and a suspension seat option to help keep you working comfortably all day long.

EASY TO OPERATE

- Controls are easy to use and the intuitive Next Generation LCD monitor provides easy to read machine information. An advanced touchscreen monitor can also be equipped.

STICK STEER TRAVEL MODE

- Moving around the job site is even easier with the Cat Stick Steer option. Easily switch from traditional travel controls with levers and pedals to joystick controls to move the machine and to operate the blade. The benefit of less effort and improved control is in your hands!

BIG PERFORMANCE IN A COMPACT DESIGN

- Strong lift and dig performance helps you get the job done faster. The compact radius design lets you access and work in the tightest areas. Dozer float allows for easy clean up.

SAFETY ON THE JOB SITE

- Your safety is our top priority. The Cat mini excavator is designed to help keep you safe on the job. Courtesy work lights and a fluorescent retractable seat belt are just a couple of the safety features we've built into the machine.

SIMPLE SERVICE FOR LESS DOWNTIME

- Maintenance is quick and easy on the Cat mini excavator. Routine check points are easy to access at ground level through the side doors. The unique tilt up cab or canopy lets you reach additional service areas when needed.

LOWER OPERATING COSTS

- Equipped with features such as auto idle, auto engine shutdown, and efficient hydraulics with a variable displacement pump, the Cat mini excavator was designed with reducing your operating costs in mind.

UNMATCHED DEALER SUPPORT

- Your Cat dealer is here to help you reach your business goals. From providing equipment solutions to operator training to service needs and beyond, your Cat dealer is ready to help.

Specifications

Engine

Engine Model	C1.1 Turbo	
Net Power @ 2,400 rpm		
ISO 9249, 80/1269/EEC	17.6 kW	23.6 hp
Gross Power @ 2,400 rpm		
SAE J1995:2014	18.4 kW	24.7 hp
Bore	77.0 mm	3.0 in
Stroke	81.0 mm	3.2 in
Displacement	1.1 L	69.0 in³

- Meets U.S. EPA Tier 4 Final and EU Stage V emission standards.
- Net power advertised is the power available at the flywheel when the engine is at rated speed and rated power when the engine is installed with the factory configured fan, air intake system, exhaust system, and alternator with a minimum alternator load.

Weights

Minimum Operating Weight with Canopy*	3025 kg	6,670 lb
Maximum Operating Weight with Canopy**	3425 kg	7,552 lb
Minimum Operating Weight with Cab*	3140 kg	6,924 lb
Maximum Operating Weight with Cab**	3545 kg	7,817 lb
EU: CE Plate Weight with Canopy***	3080 kg	6,791 lb
EU: CE Plate Weight with Cab***	3180 kg	7,012 lb

*Minimum Weight is based on fixed rubber tracks, operator, full fuel tank, standard stick, blade, bucket and no extra counterweight.

**Maximum Weight is based on steel tracks, operator, full fuel tank, long stick, blade, bucket and extra counterweight.

***CE Plate Weight is based on the most common EU configuration. Includes 75 kg (165 lb) operator and full fuel tank and excludes bucket.



303 CR Mini Excavator

Weight Increase from Minimum Configuration

Cab	115 kg	254 lb
Counterweight (light)	100 kg	221 lb
Counterweight (extra)	250 kg	551 lb
Long Stick	25 kg	55 lb
Steel Tracks	125 kg	276 lb

Travel System

Travel Speed – High	4.5 km/h	2.8 mph
Travel Speed – Low	2.6 km/h	1.6 mph
Maximum Traction Force – High Speed	14.7 kN	3,305 lbf
Maximum Traction Force – Low Speed	31.4 kN	7,059 lbf
Ground Pressure – Minimum Weight	27.6 kPa	4.0 psi
Ground Pressure – Maximum Weight	32.3 kPa	4.7 psi
Gradeability (maximum)	30 degrees	

Service Refill Capacities

Cooling System	4.0 L	1.1 gal
Engine Oil	4.0 L	1.1 gal
Fuel Tank	45.0 L	11.9 gal
Hydraulic Tank	18.0 L	4.8 gal
Hydraulic System	35.0 L	9.2 gal

Hydraulic System

Load Sensing Hydraulics with Variable Displacement Piston Pump		
Pump Flow @ 2,400 rpm	100 L/min	26 gal/min
Operating Pressure – Equipment	245 bar	3,553 psi
Operating Pressure – Travel	245 bar	3,553 psi
Operating Pressure – Swing	176 bar	2,553 psi
Auxiliary Circuit – Primary		
Flow*	65 L/min	17 gal/min
Pressure*	245 bar	3,553 psi
Auxiliary Circuit – Secondary		
Flow*	25 L/min	7.0 gal/min
Pressure*	245 bar	3,553 psi
Digging Force – Stick (standard)	16.6 kN	3,732 lbf
Digging Force – Stick (long)	14.8 kN	3,327 lbf
Digging Force – Bucket	28.4 kN	6,385 lbf

*Flow and pressure are not combinable. Under load, as flow rises pressure goes down.

Swing System

Machine Swing Speed	9.0 rpm
Boom Swing – Left	75 Degrees
Boom Swing – Right	50 Degrees

Blade

Width	1550 mm	61.0 in
Height	350 mm	13.8 in

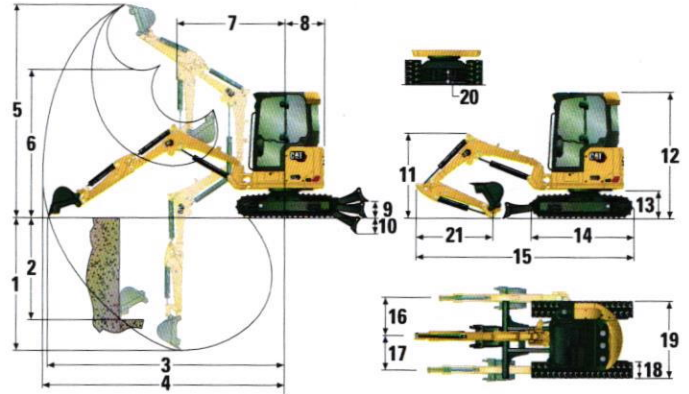
Certification – Cab and Canopy

Roll Over Protective Structure (ROPS)	ISO 12117-2:2008
Tip Over Protective Structure (TOPS)	ISO 12117:1997
Top Guard	ISO 10262:1998 (Level I)

Sound

Operator Sound Pressure (ISO 6396:2008)	78 dB(A)
Average Exterior Sound Pressure (ISO 6395:2008)	94 dB(A)

• European Union Directive “2000/14/EC”



Dimensions

	Standard Stick	Long Stick
1 Dig Depth	2650 mm (104.3 in)	2950 mm (116.1 in)
2 Vertical Wall	1820 mm (71.7 in)	2070 mm (81.5 in)
3 Maximum Reach at Ground Level	4830 mm (190.2 in)	5110 mm (201.2 in)
4 Maximum Reach	4980 mm (196.1 in)	5240 mm (206.3 in)
5 Maximum Dig Height	4510 mm (177.6 in)	4650 mm (183.1 in)
6 Maximum Dump Clearance	3170 mm (124.8 in)	3310 mm (130.3 in)
7 Boom in Reach	1750 mm (68.9 in)	1910 mm (75.2 in)
8 Tail Swing		
without Counterweight	775 mm (30.5 in)	775 mm (30.5 in)
with Counterweight (light)	845 mm (33.3 in)	845 mm (33.3 in)
with Counterweight (extra)	890 mm (35.0 in)	890 mm (35.0 in)
9 Maximum Blade Height	385 mm (15.2 in)	385 mm (15.2 in)
10 Maximum Blade Depth	535 mm (21.1 in)	535 mm (21.1 in)
11 Boom Height in Shipping Position	1600 mm (63.0 in)	1920 mm (75.6 in)
12 Overall Shipping Height	2480 mm (97.6 in)	2480 mm (97.6 in)
13 Swing Bearing Height	570 mm (22.4 in)	570 mm (22.4 in)
14 Overall Undercarriage Length	2070 mm (81.5 in)	2070 mm (81.5 in)
15 Overall Shipping Length†	4510 mm (177.6 in)	4560 mm (179.5 in)
16 Boom Swing Right	870 mm (34.3 in)	870 mm (34.3 in)
17 Boom Swing Left	640 mm (25.2 in)	640 mm (25.2 in)
18 Track Belt/Shoe Width	300 mm (11.8 in)	300 mm (11.8 in)
19 Track Width	1550 mm (61.0 in)	1550 mm (61.0 in)
20 Ground Clearance	310 mm (12.2 in)	310 mm (12.2 in)
21 Stick Length	1260 mm (49.6 in)	1560 mm (61.4 in)

†Overall Shipping Length depends on blade position during shipment.

303 CR Mini Excavator

Cab

Lift Capacities – Minimum Configuration			Lift Point Radius – 2 m (6.6 ft)			Lift Point Radius – 3 m (9.8 ft)			Lift Point Radius (Maximum)			
			Over Front			Over Front			Over Front			m (ft)
			Blade Down	Blade Up	Over Side	Blade Down	Blade Up	Over Side	Blade Down	Blade Up	Over Side	
3 m (9.8 ft)	Standard Stick	kg (lb)				*792 (*1,746)	630 (1,389)	548 (1,208)	*848 (*1,870)	441 (972)	385 (849)	3.67 (12.0)
	Long Stick	kg (lb)							*741 (*1,634)	376 (829)	327 (721)	3.99 (13.1)
2 m (6.6 ft)	Standard Stick	kg (lb)				*998 (*2,200)	601 (1,325)	520 (1,146)	*864 (*1,905)	349 (769)	303 (668)	4.16 (13.6)
	Long Stick	kg (lb)				*839 (*1,850)	604 (1,332)	522 (1,151)	*767 (*1,691)	304 (670)	263 (580)	4.43 (14.5)
1 m (3.3 ft)	Standard Stick	kg (lb)				*1352 (*2,981)	553 (1,219)	475 (1,047)	*903 (*1,991)	321 (708)	278 (613)	4.29 (14.1)
	Long Stick	kg (lb)				*1227 (*2,705)	549 (1,210)	470 (1,036)	*808 (*1,781)	281 (619)	242 (534)	4.55 (14.9)
0 m (0 ft)	Standard Stick	kg (lb)	*1280 (*2,822)	1003 (2,211)	823 (1,814)	*1522 (*3,355)	525 (1,157)	448 (988)	*955 (*2,105)	335 (739)	289 (637)	4.11 (13.5)
	Long Stick	kg (lb)	*1277 (*2,815)	974 (2,147)	795 (1,753)	*1480 (*3,263)	511 (1,127)	433 (955)	*862 (*1,900)	290 (639)	249 (546)	4.39 (14.4)

Minimum Weight includes cab, rubber tracks, no extra counterweight, operator, full fuel tank and blade.

Lift Capacities – Maximum Configuration			Lift Point Radius – 2 m (6.6 ft)			Lift Point Radius – 3 m (9.8 ft)			Lift Point Radius (Maximum)			
			Over Front			Over Front			Over Front			m (ft)
			Blade Down	Blade Up	Over Side	Blade Down	Blade Up	Over Side	Blade Down	Blade Up	Over Side	
3 m (9.8 ft)	Standard Stick	kg (lb)				*792 (*1,746)	*792 (*1,746)	647 (1,426)	*848 (*1,870)	573 (1,263)	464 (1,023)	3.67 (12.0)
	Long Stick	kg (lb)							*741 (*1,634)	495 (1,091)	399 (880)	3.99 (13.1)
2 m (6.6 ft)	Standard Stick	kg (lb)				*998 (*2,200)	773 (1,704)	620 (1,367)	*864 (*1,905)	461 (1,016)	372 (820)	4.16 (13.6)
	Long Stick	kg (lb)				*839 (*1,850)	776 (1,711)	622 (1,371)	*767 (*1,691)	408 (899)	328 (723)	4.43 (14.5)
1 m (3.3 ft)	Standard Stick	kg (lb)				*1352 (*2,981)	725 (1,598)	576 (1,270)	*903 (*1,991)	429 (946)	345 (761)	4.29 (14.1)
	Long Stick	kg (lb)				*1227 (*2,705)	721 (1,590)	571 (1,259)	*808 (*1,781)	381 (840)	304 (670)	4.55 (14.9)
0 m (0 ft)	Standard Stick	kg (lb)	*1280 (*2,822)	*1280 (*2,822)	990 (2,183)	*1522 (*3,355)	697 (1,537)	549 (1,210)	*955 (*2,105)	449 (990)	360 (794)	4.11 (13.5)
	Long Stick	kg (lb)	*1277 (*2,815)	*1277 (*2,815)	962 (2,121)	*1480 (*3,263)	683 (1,506)	535 (1,179)	*862 (*1,900)	395 (871)	314 (692)	4.39 (14.4)

Maximum Weight includes cab, steel tracks, extra counterweight, operator, full fuel tank and blade.

Canopy

Lift Capacities – Minimum Configuration			Lift Point Radius – 2 m (6.6 ft)			Lift Point Radius – 3 m (9.8 ft)			Lift Point Radius (Maximum)			
			Over Front			Over Front			Over Front			m (ft)
			Blade Down	Blade Up	Over Side	Blade Down	Blade Up	Over Side	Blade Down	Blade Up	Over Side	
3 m (9.8 ft)	Standard Stick	kg (lb)				*792 (*1,746)	603 (1,329)	526 (1,160)	*848 (*1,870)	420 (926)	368 (811)	3.67 (12.0)
	Long Stick	kg (lb)							*741 (*1,634)	357 (787)	312 (688)	3.99 (13.1)
2 m (6.6 ft)	Standard Stick	kg (lb)				*998 (*2,200)	574 (1,265)	498 (1,098)	*864 (*1,905)	331 (730)	289 (637)	4.16 (13.6)
	Long Stick	kg (lb)				*839 (*1,850)	576 (1,270)	500 (1,102)	*767 (*1,691)	288 (635)	250 (551)	4.43 (14.5)
1 m (3.3 ft)	Standard Stick	kg (lb)				*1352 (*2,981)	526 (1,160)	453 (999)	*903 (*1,991)	304 (670)	264 (582)	4.29 (14.1)
	Long Stick	kg (lb)				*1227 (*2,705)	522 (1,151)	448 (988)	*808 (*1,781)	264 (582)	228 (503)	4.55 (14.9)
0 m (0 ft)	Standard Stick	kg (lb)	*1280 (*2,822)	952 (2,099)	784 (1,728)	*1522 (*3,355)	498 (1,098)	426 (939)	*955 (*2,105)	317 (699)	275 (606)	4.11 (13.5)
	Long Stick	kg (lb)	*1277 (*2,815)	923 (2,035)	756 (1,667)	*1480 (*3,263)	483 (1,065)	411 (906)	*862 (*1,900)	273 (602)	235 (518)	4.39 (14.4)

Minimum Weight includes canopy, rubber tracks, no extra counterweight, operator, full fuel tank and blade.

Lift Capacities – Maximum Configuration			Lift Point Radius – 2 m (6.6 ft)			Lift Point Radius – 3 m (9.8 ft)			Lift Point Radius (Maximum)			
			Over Front			Over Front			Over Front			m (ft)
			Blade Down	Blade Up	Over Side	Blade Down	Blade Up	Over Side	Blade Down	Blade Up	Over Side	
3 m (9.8 ft)	Standard Stick	kg (lb)				*792 (*1,746)	774 (1,706)	627 (1,382)	*848 (*1,870)	552 (1,217)	449 (990)	3.67 (12.0)
	Long Stick	kg (lb)							*741 (*1,634)	476 (1,049)	385 (849)	3.99 (13.1)
2 m (6.6 ft)	Standard Stick	kg (lb)				*998 (*2,200)	746 (1,645)	600 (1,323)	*864 (*1,905)	443 (977)	359 (791)	4.16 (13.6)
	Long Stick	kg (lb)				*839 (*1,850)	748 (1,649)	601 (1,325)	*767 (*1,691)	391 (862)	315 (694)	4.43 (14.5)
1 m (3.3 ft)	Standard Stick	kg (lb)				*1352 (*2,981)	698 (1,539)	555 (1,224)	*903 (*1,991)	412 (908)	332 (732)	4.29 (14.1)
	Long Stick	kg (lb)				*1227 (*2,705)	694 (1,530)	550 (1,213)	*808 (*1,781)	365 (805)	292 (644)	4.55 (14.9)
0 m (0 ft)	Standard Stick	kg (lb)	*1280 (*2,822)	1269 (2,798)	954 (2,103)	*1522 (*3,355)	670 (1,477)	529 (1,166)	*955 (*2,105)	431 (950)	346 (763)	4.11 (13.5)
	Long Stick	kg (lb)	*1277 (*2,815)	1240 (2,734)	927 (2,044)	*1480 (*3,263)	655 (1,444)	514 (1,133)	*862 (*1,900)	378 (833)	301 (664)	4.39 (14.4)

Maximum Weight includes canopy, steel tracks, extra counterweight, operator, full fuel tank and blade.

*The above loads are in compliance with hydraulic excavator lift capacity rating standard ISO 10567:2007 and they do not exceed 87% of hydraulic lifting capacity or 75% of tipping capacity. The excavator bucket weight is not included on this chart. Lifting capacities are for standard stick.

303 CR Mini Excavator

Standard and Optional Equipment

Standard and optional equipment may vary. Consult your Cat dealer for details.

	Standard	Optional		Standard	Optional
ENGINE			OPERATOR ENVIRONMENT (continued)		
Cat® C1.1 Turbo Engine (U.S. EPA Tier 4 Final/EU Stage V)	✓		Next Generation Color LCD Monitor (IP66)	✓	
Automatic Engine Idle	✓		– Fuel Level and Coolant Temperature Gauges	✓	
Automatic Engine Shutdown	✓		– Maintenance and Machine Monitoring	✓	
Automatic Two Speed Travel	✓		– Performance and Machine Adjustments	✓	
Fuel Water Separator	✓		– Numeric Security Code	✓	
Power on Demand (not available in all regions)	✓		– Multiple Languages	✓	
Variable Displacement Piston Pump	✓		– Hour Meter with Wake Up Switch	✓	
Load Sensing/Flow Sharing Hydraulics	✓		– Jog Dial (cab only)	✓	
HYDRAULICS			Next Generation Advanced Monitor		✓
Smart Tech Electronic Pump	✓		– Touch Screen		✓
Accumulator	✓		– Site Reference System		✓
Automatic Swing Brake	✓		– High Definition Camera Capable (IP68 and IP69K)		✓
Auxiliary Hydraulic Lines	✓		– Numeric Security Code		✓
One and Two Way Auxiliary Flow	✓		UNDERCARRIAGE		
Continuous Auxiliary Flow	✓		Rubber Belt (300 mm/11.8 in wide)	✓	
Auxiliary Line Quick Disconnects	✓		Steel Track (300 mm/11.8 in wide)		✓
OPERATOR ENVIRONMENT			Dozer Blade	✓	
Tilt-up Canopy or Tilt-Up Cab	✓		Dozer Blade Float	✓	
Cab with Air Conditioning		✓	Tie Downs on Track Frame	✓	
Cab with Heater		✓	BOOM, STICK AND LINKAGES		
Top Guard ISO 10262:1998 Level I	✓		One Piece Boom (2200 mm/86.6 in)	✓	
ROPS – ISO 12117-2:2008	✓		Standard Stick (1260 mm/49.6 in)	✓	
TOPS – ISO 12117:1997	✓		Long Stick (1560 mm/61.4 in)		✓
Stick Steer Mode	✓		Front Shovel Capable	✓	
Travel Cruise Control	✓		Pin-On	✓	
Control Pattern Changer (optional in some regions)	✓		Dual Lock Manual Coupler		✓
Adjustable Wrist Rests	✓		Hydraulic Coupler		✓
Washable Floor Mat	✓		Thumb Ready (not available in all regions)	✓	
Travel Pedals and Hand Levers	✓		Certified Lifting Eye (optional in some regions)	✓	
No Travel Pedals and Hand Levers (optional in some regions)		✓	Attachments including Couplers, Thumbs, Buckets, Augers and Hammers		✓
Machine Security	✓		2nd Auxiliary Hydraulic Lines		✓
Standard Key with Pass Code	✓		Bucket Divert Lines		✓
Push to Start with Key Fob/Pass Code		✓	Boom Lowering Check Valve		✓
Fabric Suspension Seat (Cab only)	✓		Stick Lowering Check Valve		✓
Vinyl Suspension Seat (Canopy only)	✓		Hydraulic Quick Coupler Lines (not available in all regions)		✓
Vinyl Non-Suspension Seat (Canopy only) (not available in all regions)		✓	ELECTRICAL		
Hydraulic Lockout – All Controls	✓		12 Volt Battery	✓	
Retractable High Visibility Seat Belt (75 mm/3 in)	✓		Software (machine and monitor)	✓	
Coat Hook	✓		Maintenance Free Battery	✓	
Cup Holder	✓		Battery Disconnect	✓	
Storage Pocket	✓		Signaling/Warning Horn	✓	
Skylight	✓		12 Volt Power Socket	✓	
Mounting Bosses for Front	✓		Product Link PL243 (regulations apply)		✓
Signaling/Warning Horn	✓		Product Link PLE643 (regulations apply)		✓
Interior Light (Cab only)	✓		Travel Alarm (standard in some regions)		✓
Boom Light, Halogen (not available in all regions)	✓		GUARDING		
LED Front Lights		✓	Polycarbonate Half Height Front Guard (Canopy only)		✓
LED Front and Rear Lights		✓	Polycarbonate Front Guard (ISO 10262:1998 Level I and EN356 P5A)		✓
LED Boom Light		✓	OTHER		
Utility Space for Mobile Phone	✓		Bio Oil Capable		✓
Mirrors Left and Right		✓	Eco Drain		✓
Radio – Bluetooth®, Auxiliary, Microphone, USB (charging only) (Cab only)		✓	Water Jacket Heater		✓
			Extra Counterweight (250 kg/551 lb)		✓

For more complete information on Cat products, dealer services, and industry solutions, visit us on the web at www.cat.com

© 2021 Caterpillar
All rights reserved

Materials and specifications are subject to change without notice. Featured machines in photos may include additional equipment. See your Cat dealer for available options.

CAT, CATERPILLAR, LET'S DO THE WORK, their respective logos, "Caterpillar Corporate Yellow," the "Power Edge" and Cat "Modern Hex" trade dress as well as corporate and product identity used herein, are trademarks of Caterpillar and may not be used without permission.

AEHQ8350-00 (04-2021)
Build Number: 07A
(Global excluding
China and Japan)





Quote Summary

Prepared For

CITY OF BAY ST LOUIS
598 MAIN ST
BAY SAINT LOUIS, MS 39520
Business: 228-466-5448

Prepared By

KENNEDY DAN
Stribling Equipment, LLC
8480 West Oaklawn Road
Biloxi, MS 39532
Phone: 228-365-0000
dan.kennedy@striblingequipment.com

Quote Id: 33112826
Created On: 02 July 2025
Last Modified On: 02 July 2025
Expiration Date: 09 July 2025

Equipment Summary	Selling Price	Qty	Extended
JOHN DEERE 35 P-Tier Compact Excavator	\$ 54,771.02	X 1 =	\$ 54,771.02
Equipment Total			\$ 54,771.02
Trade In Total			\$ 0.00

Quote Summary

Equipment Total	\$ 54,771.02
Trade In	
DOCUMENTATION FEE	\$ 0.00
SubTotal	\$ 54,771.02
Est. Service Agreement Tax	
Total	\$ 54,771.02
Down Payment	(0.00)
Rental Applied	(0.00)
Balance Due	\$ 54,771.02

Salesperson : X

Accepted By : X

Confidential



Selling Equipment

Quote Id: 33112826

Customer: CITY OF BAY ST LOUIS

JOHN DEERE 35 P-Tier Compact Excavator

Hours:

Stock Number:

Code	Description	Qty
0150FF	35 P-Tier Compact Excavator	1

Standard Options - Per Unit

0202	Destination Code - United States	1
0259	English Customer Delivery Packet	1
0405	Configuration 5 - Canopy, Rubber, Susp, Long Arm + EX C/W, Angle Blade	1

Dealer Attachments

BYT10966	18 in. (457 mm) Heavy Duty Bucket; 2.8 c. ft. (0.080 c. m.) (4 Teeth Included)	1
----------	--	---

35 / P

Compact Excavator



JOHN DEERE





SMALLER MACHINE, BIGGER POTENTIAL

When you need more from your compact excavator, the John Deere 35 P-Tier might be your "one and done." This small-but-mighty muscle specializes in making work in close quarters seem like no big deal. Loaded with customer-inspired ideas like significant lift and reach, precise control, and an amazingly comfortable cab, digging, excavating, and loading tasks become big possibilities. Plus it runs quiet, too. Jobsite-proven standard and optional advantages including your choice of tracks and John Deere attachments push the 35 P-Tier to make a sizable impact on the potential — and profitability — of your operation.

35 P-TIER COMPACT EXCAVATOR

FEATURES



Quiet comfort and control

Spacious operator station has a wide entryway and backhoe- to excavator-style controls. Swing boom and foldable travel pedals are positioned for efficient operation and comfortable foot room. Noise-reducing muffler and isochronous high-idle speed help keep things noticeably quiet. Rubber cab mounts isolate the operator from noise and vibration.

Start from zero

Zero-tail-swing design maximizes maneuverability and performance in tight places such as urban and residential areas. Compact stature permits easy transport between jobsites, perfect for "dig-and-go" projects.

Resource management

Auto-idle automatically reduces engine speed when hydraulics aren't in use. Auto shutdown conserves precious fuel. Power/economy modes optimize power for digging applications, further improving fuel efficiency.

Get back to it

Standard backfill blade enables the 35 P-Tier to grade and fill, boosting machine versatility and stability when using attachments or working on uneven terrain.

Swing for the fences

Put the 35 P-Tier's independent swing boom and 360-degree rotation to work taming difficult tasks. Impressive lift height and reach ease truck loading.



**RUBBER CAB MOUNTS
HELP ISOLATE OPERATOR
FROM NOISE & VIBRATION**

Handy hydraulics

Standard quick-coupler-equipped, boom-mounted auxiliary hydraulic lines simplify attachment hookup. Return-flow selector valve accommodates hydraulic-driven attachments that operate either one or two ways. Wedge-style coupler enables swift changes of a wide range of buckets and attachments, such as hydraulic hammers, plate compactors, and augers.

Safe travels

No operator activation is required for high-speed travel. Track speeds automatically slow to low whenever a heavier load is encountered, then return to high when the load normalizes.

Designed for durability

Heavy-duty side shields deflect material and impacts, protecting boom/blade cylinders and drive motors. Single-pin swing-post increases boom rigidity. Reinforced D-channel side frames and heavy-duty X-frame help extend wear life.

Maintenance made easy

Hinged door provides wide-open access to the side-by-side oil cooler and radiator. Operator station tilts forward 50 degrees to reach the swing motor, hydraulic control valve, engine starter motor, and alternator. Extended service intervals allow the machine to work longer before maintenance is needed.

Make the most of your investment

Already own some John Deere attachments? Many models including buckets, hydraulic hammers, and augers also work on other compact machines so you can redefine fleet utilization — and your bottom line.



35 P-TIER COMPACT EXCAVATOR



MATCH YOUR TRACK TO THE APPLICATION

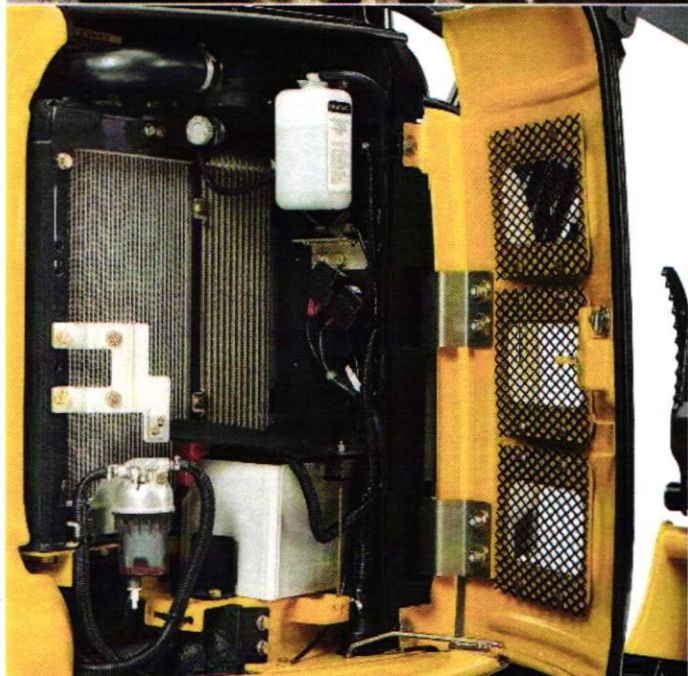
The choice is yours

Rubber tracks traverse virtually any terrain, including paved surfaces. Optional rubber grousers combine work-anywhere flexibility with steel-track serviceability. Steel tracks and steel tracks with rubber pads are also available.

Connected machines

John Deere construction equipment comes with in-base connectivity — free from subscriptions or annual renewals. Analyze critical machine data, track utilization, review diagnostic alerts, and more from **the John Deere Operations Center™**. The Operations Center also enables **John Deere Connected Support™**, which uses data from thousands of connected machines to proactively address issues before they arise. Your dealer can also remotely monitor machine health, diagnose problems, and even update machine software without a trip to the jobsite.*

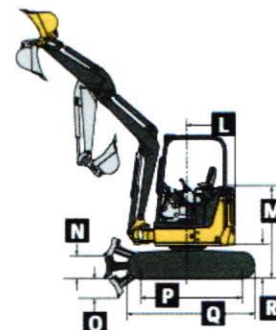
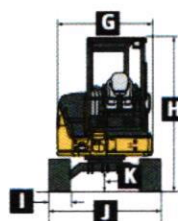
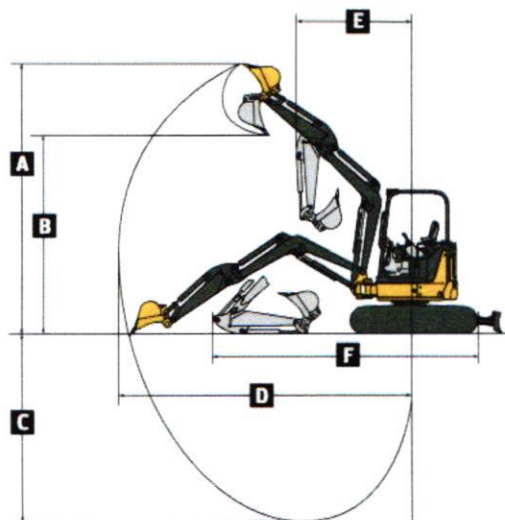
*Availability varies by region and product. Options not available in every country.



35 P-TIER COMPACT EXCAVATOR SPECIFICATIONS

While general information, pictures, and descriptions are provided, some illustrations and text may include product options and accessories NOT AVAILABLE in all regions, and in some countries products and accessories may require modifications or additions to ensure compliance with the local regulations of those countries.

Engine	35 P-TIER			
Manufacturer and Model	Yanmar 3TNV88F		Displacement	1.642 L (100.2 cu. in.)
Non-Road Emission Standard	EPA Final Tier 4/EU Stage IV		Net Power (ISO 9249)	17.4 kW (23.3 hp) at 2,400 rpm
Powertrain				
Each track independently driven by hydrostatic axial-piston motor connected to 2-stage planetary gear-reduction box				
Maximum Travel Speed	Low: 2.8 km/h (1.7 mph) / High: 4.3 km/h (2.7 mph)			
Hydraulics				
Open center with 2 variable-displacement pumps and 1 fixed-gear pump			Auxiliary Flow Controls	61.2 L/m (16.2 gpm)
Pump Flow	2 x 38.4 L/m (2 x 10.1 gpm)			2 hydraulic pilot-operated controls for boom, arm, bucket, swing, boom swing, travel, and auxiliary functions
Piston	22.8 L/m (6.0 gpm)			
Gear				
Electrical				
Alternator Rating	55 amp			
Work Lights	2 halogen: 1 mounted on operator's station and 1 mounted on boom			
Undercarriage				
Track, Rubber	300 mm (12 in.)			
Ground Pressure	1315-mm (4 ft. 4 in.) Standard Arm and Standard Counterweight 1715-mm (5 ft. 8 in.) Long Arm and Extra Counterweight			
	With Canopy	With Cab	With Canopy	With Cab
With Rubber Track	32.0 kPa (4.6 psi)	33.0 kPa (4.8 psi)	33.7 kPa (4.9 psi)	35.2 kPa (5.1 psi)
Upperstructure				
Swing Speed	9.0 rpm			
Independent Swing Boom	Canopy	Cab		
Left	72 deg.	62 deg.		
Right	62 deg.	62 deg.		
Swing Brake	Spring applied, hydraulically released, automatic, disc type			
Serviceability				
Refill Capacities			Refill Capacities (continued)	
Fuel Tank	42 L (11.1 gal.)		Engine Oil With Filter	7.2 L (7.6 qt.)
Cooling System	5.0 L (5.3 qt.)		Hydraulic Tank	32 L (8.5 gal.)
Operating Weights				
	1315-mm (4 ft. 4 in.) Standard Arm and Standard Counterweight		1715-mm (5 ft. 8 in.) Long Arm and Extra Counterweight	
	With Canopy	With Cab	With Canopy	With Cab
With Full Fuel Tank and 79-kg (175 lb.) Operator	3520 kg (7,760 lb.)	3690 kg (8,135 lb.)	3783 kg (8,340 lb.)	3953 kg (8,715 lb.)
Optional Angle Blade	296 kg (653 lb.)	296 kg (653 lb.)	296 kg (653 lb.)	296 kg (653 lb.)
Counterweight				
Standard	540 kg (1,190 lb.)	540 kg (1,190 lb.)	540 kg (1,190 lb.)	540 kg (1,190 lb.)
Additional	240 kg (529 lb.)	240 kg (529 lb.)	240 kg (529 lb.)	240 kg (529 lb.)
Operating Dimensions				
	1315-mm (4 ft. 4 in.) Standard Arm and Canopy		1315-mm (4 ft. 4 in.) Standard Arm and Cab	
	1715-mm (5 ft. 8 in.) Long Arm and Canopy		1715-mm (5 ft. 8 in.) Long Arm and Cab	
A Maximum Cutting Height	4.87 m (16 ft. 0 in.)		4.70 m (15 ft. 5 in.)	
B Maximum Dumping Height	3.46 m (11 ft. 4 in.)		3.57 m (11 ft. 9 in.)	
C Maximum Digging Depth	3.06 m (10 ft. 0 in.)		3.46 m (11 ft. 4 in.)	
D Maximum Digging Reach	5.21 m (17 ft. 1 in.)		5.52 m (18 ft. 1 in.)	
E Minimum Front Swing Radius	2.08 m (6 ft. 10 in.)		2.19 m (7 ft. 2 in.)	
F Transport Length	4.64 m (15 ft. 3 in.)		4.75 m (15 ft. 7 in.)	
Digging Force (ISO)				
Arm	19.0 kN (4,277 lb.)	19.0 kN (4,277 lb.)	16.9 kN (3,792 lb.)	16.9 kN (3,792 lb.)
Bucket	27.1 kN (6,085 lb.)	27.1 kN (6,085 lb.)	27.1 kN (6,085 lb.)	27.1 kN (6,085 lb.)



While general information, pictures, and descriptions are provided, some illustrations and text may include product options and accessories NOT AVAILABLE in all regions, and in some countries products and accessories may require modifications or additions to ensure compliance with the local regulations of those countries.

Machine Dimensions (see line art at bottom right of page 6)		35 P-TIER			
G	Upperstructure Width	1.55 m (5 ft. 1 in.)	M	Engine Cover Height	1.53 m (5 ft. 0 in.)
H	Overall Height		N	Maximum Blade Lift Above Ground	360 mm (14.2 in.)
	Canopy	2.48 m (8 ft. 2 in.)	O	Maximum Blade Drop Below Ground	400 mm (15.7 in.)
	Cab	2.48 m (8 ft. 2 in.)		Blade	
I	Track Width	300 mm (12 in.)		Width	1.74 m (5 ft. 9 in.)
J	Undercarriage Width	1.74 m (5 ft. 9 in.)		Height	373 mm (14.7 in.)
K	Ground Clearance	280 mm (11 in.)	P	Sprocket Center to Idler Center	1.66 m (5 ft. 5 in.)
L	Tail Swing Radius		Q	Undercarriage Length	2.11 m (6 ft. 11 in.)
	With Standard Arm	870 mm (34 in.)	R	Counterweight Clearance	550 mm (22 in.)
	With Long Arm and Extra Counterweight	980 mm (39 in.)			

Lift Capacities

Boldface type indicates hydraulically limited capacity; lightface type indicates stability-limited capacities, in kg (lb.). All lift capacities are based on ISO 10567 (with power boost). Lifting measurement from center of arm to bucket pin; with 400-mm (16 in.) track shoe and blade on ground; and situated on firm, level, uniform supporting surface. Total load includes weight of cables, hook, etc. Figures do not exceed 87 percent of hydraulic capacities or 75 percent of weight needed to tip machine.

Ground Level at 3.05-m (10 ft.) Radius	Canopy and Standard Counterweight		Cab and Standard Counterweight		Canopy and Extra Counterweight		Cab and Extra Counterweight	
	Over Front	Over Side	Over Front	Over Side	Over Front	Over Side	Over Front	Over Side
1315-mm (4 ft. 4 in.) Standard Arm	1568 kg (3,453 lb.)	641 kg (1,412 lb.)	1568 kg (3,453 lb.)	684 kg (1,506 lb.)	1568 kg (3,453 lb.)	765 kg (1,686 lb.)	1568 kg (3,453 lb.)	808 kg (1,780 lb.)
1715-mm (5 ft. 8 in.) Long Arm	1501 kg (3,307 lb.)	630 kg (1,388 lb.)	1501 kg (3,307 lb.)	672 kg (1,481 lb.)	1501 kg (3,307 lb.)	755 kg (1,662 lb.)	1501 kg (3,307 lb.)	797 kg (1,756 lb.)

Additional equipment

Key: ● Standard ▲ Optional or special

See your John Deere dealer for further information.

35 P Engine

- Meets EPA Final Tier 4/EU Stage IV emissions
- Auto shutdown
- Engine coolant to -37 deg. C (-34 deg. F)
- Engine preheater
- Fan guard
- Fuel/water separator
- Full-flow oil filter
- Isolation mounted
- Key start switch with electric fuel shutoff
- Single dry-type air filter

Hydraulic System

- Auto-idle
- Auxiliary function right-hand pilot-lever control
- Auxiliary hydraulic lines with quick-couplers to end of boom
- Auxiliary return-flow selector valve
- Axial-piston swing motor
- Boom-swing foot control
- Excavator-to-backhoe control pattern change valve
- Open center with 2 variable-displacement pumps and 1 fixed-gear pump
- Hydraulic pilot-operated controls for boom, arm, bucket, swing, boom swing, blade, travel, and auxiliary functions
- Wet-disc swing brake

Undercarriage

- Planetary final drive
- Propel motor shield
- 2-speed axial-piston propel motors

35 P Undercarriage (continued)

- Rubber track, 300 mm (12 in.)
- ▲ Steel track, 300 mm (12 in.) with triple semi-grousers
- ▲ Rubber crawler pad, 300 mm (12 in.)

Upperstructure

- 360-deg. rotation
- Counterweight, 540 kg (1,190 lb.)
- Hinged service-access doors
- ROPS/TOPS/FOPS (canopy)
- ▲ ROPS/TOPS/FOPS (cab) with air conditioning and heater
- Vandal protection for service doors, fuel cap, and toolbox
- Zero-tail-swing configuration

Front Attachments

- Arm, 1315 mm (4 ft. 4 in.)
- ▲ Long arm, 1715 mm (5 ft. 8 in.), includes additional 240-kg (529 lb.) counterweight
- Articulation hose shield
- Backfill blade, 1.74 m (5 ft. 9 in.)
- ▲ Hydraulic angle backfill blade
- Boom, 2.465 m (8 ft. 1 in.)
- Mechanical quick-coupler
- ▲ Augers: Planetary / Chain drive / Bits / Bit adapters
- ▲ Clamp
- ▲ Hammers: Points / Tools
- ▲ Quick-coupler buckets: Bucket teeth / Ditching / Heavy-duty

Operator's Station

- Horn
- Hour meter

35 P Operator's Station (continued)

- Instrumentation lights
- Mode selectors (illuminated): Power mode (I) / Economy mode (II)
- Monitor system: Preheat indicator / Engine oil pressure indicator with alarm / Alternator voltage indicator / Fuel gauge and low-fuel-level indicator / Engine coolant temperature gauge and engine coolant temperature indicator with alarm / Hour meter / Work lights indicator
- Motion alarm with cancel switch
- Work lights switch
- Propel levers and foldable pedals
- 2 travel speeds with automatic shifting
- Seat belt, 51 mm (2 in.), retractable
- ▲ Seat belt, 76 mm (3 in.), retractable
- Vinyl seat with fore/aft adjustment
- ▲ Suspension seat (cloth)
- ▲ Front screen
- ▲ Rear secondary exit kit

Electrical

- 12-volt accessory outlet
- Alternator, 55 amp
- Low-maintenance battery
- Blade-type multi-fused circuits
- Positive-terminal battery covers
- ▲ JDLink™ connectivity hardware and John Deere Operations Center™ account

Lights

- Work lights: Halogen / 1 mounted on operator's station / 1 mounted on boom

Net engine power is with standard equipment including air cleaner, exhaust system, alternator, and cooling fan at test conditions per ISO 9249. These machines are not equipped with spark arrester mufflers. Usage in forestry applications is not recommended. Specifications and design subject to change without notice. Wherever applicable, specifications are in accordance with SAE standards. Except where otherwise noted, these specifications are based on a canopy unit with standard arm, 610 mm (24 in.), 0.11 m³ (4.0 cu ft.) bucket, 300 mm (12 in.) rubber track, and 540 kg (1,190 lb.) counterweight, full fuel tank, and 79 kg (175 lb.) operator.



JOHN DEERE