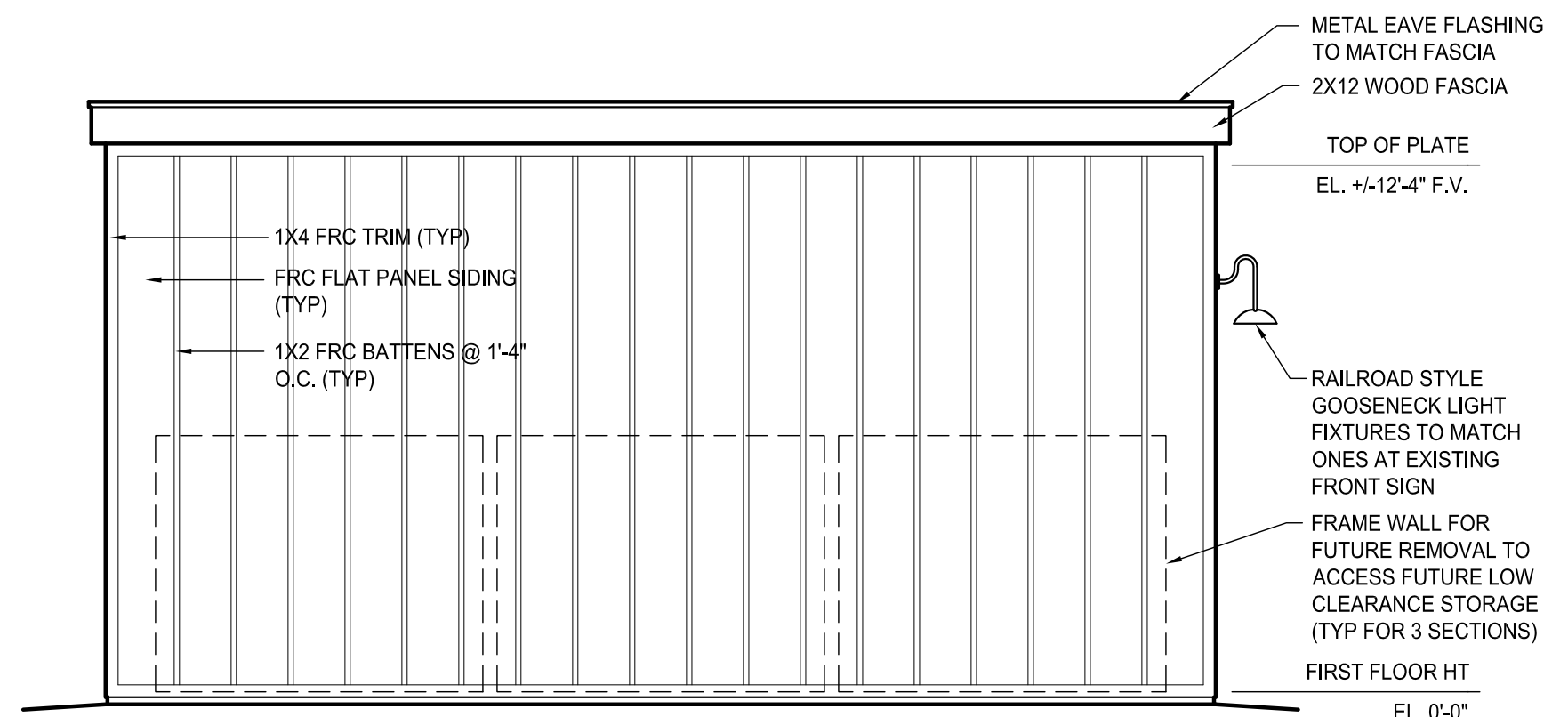
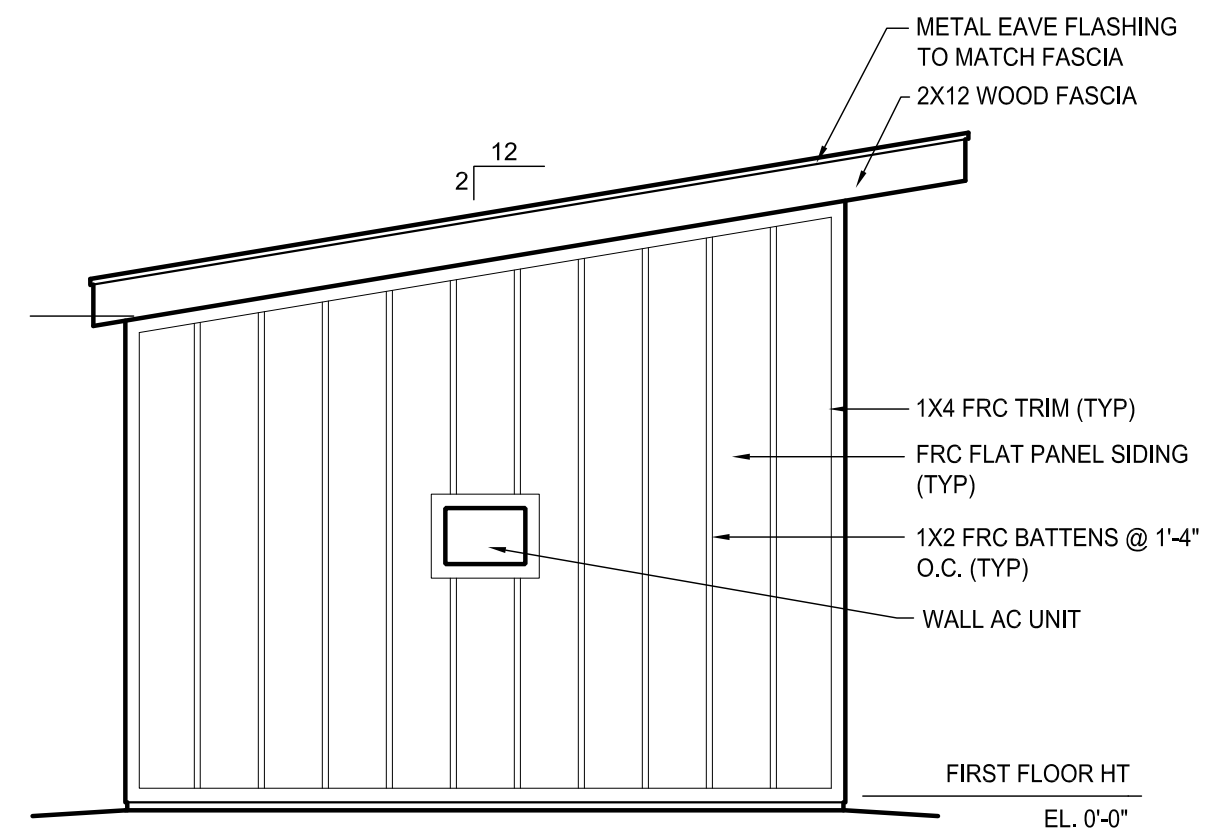


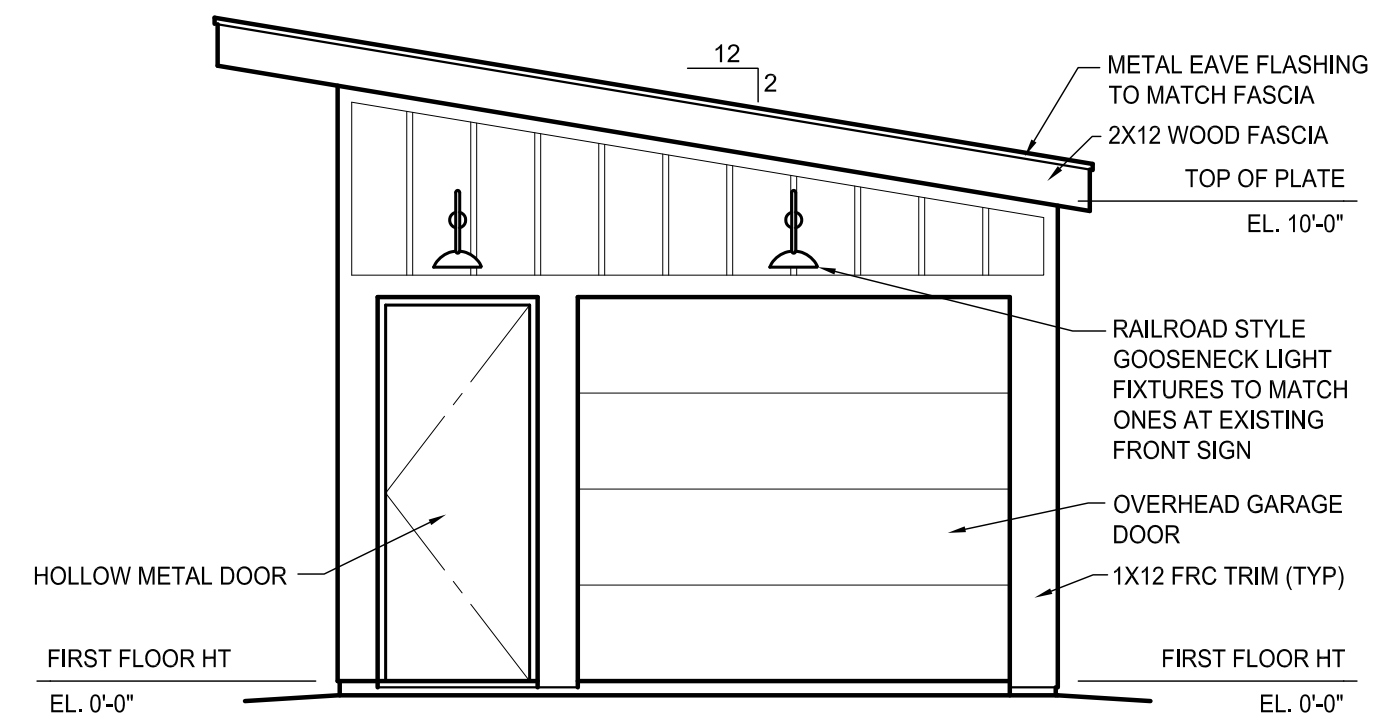
10 WEST ELEVATION  
2.1 2.1 1/4" = 1'-0"



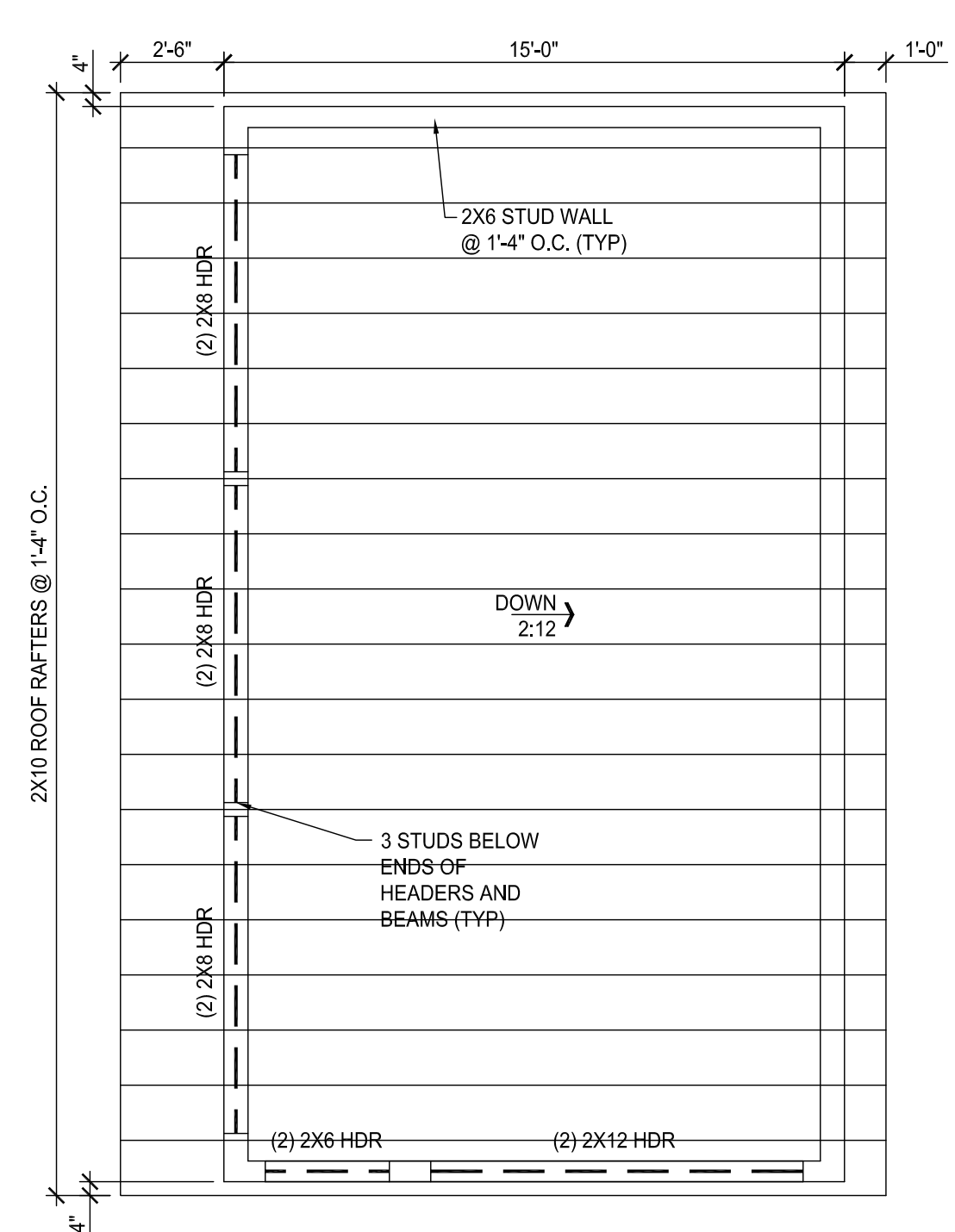
9 EAST ELEVATION  
2.1 2.1 1/4" = 1'-0"



8 SOUTH ELEVATION  
2.1 2.1 1/4" = 1'-0"

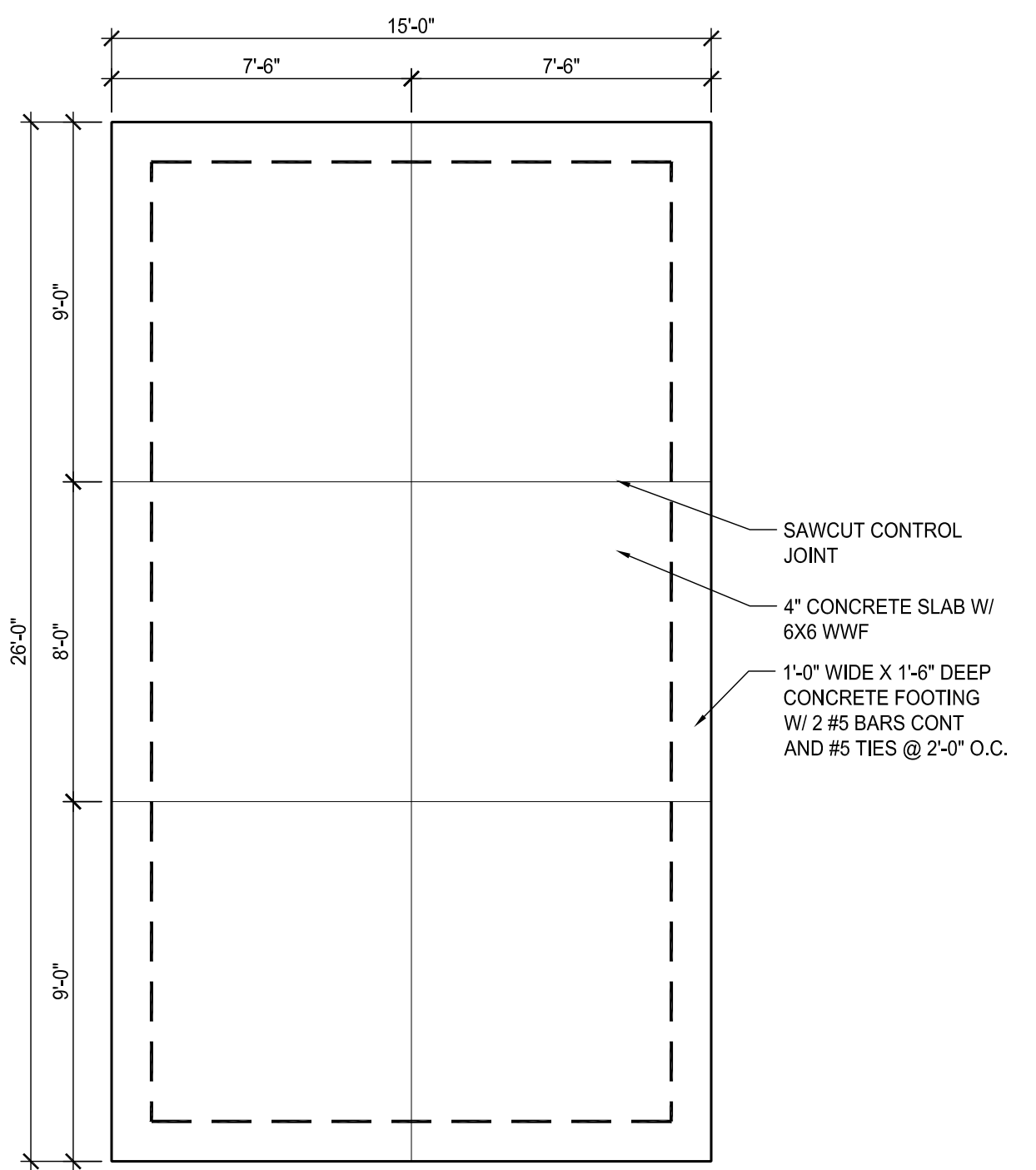


7 NORTH ELEVATION  
2.1 2.1 1/4" = 1'-0"

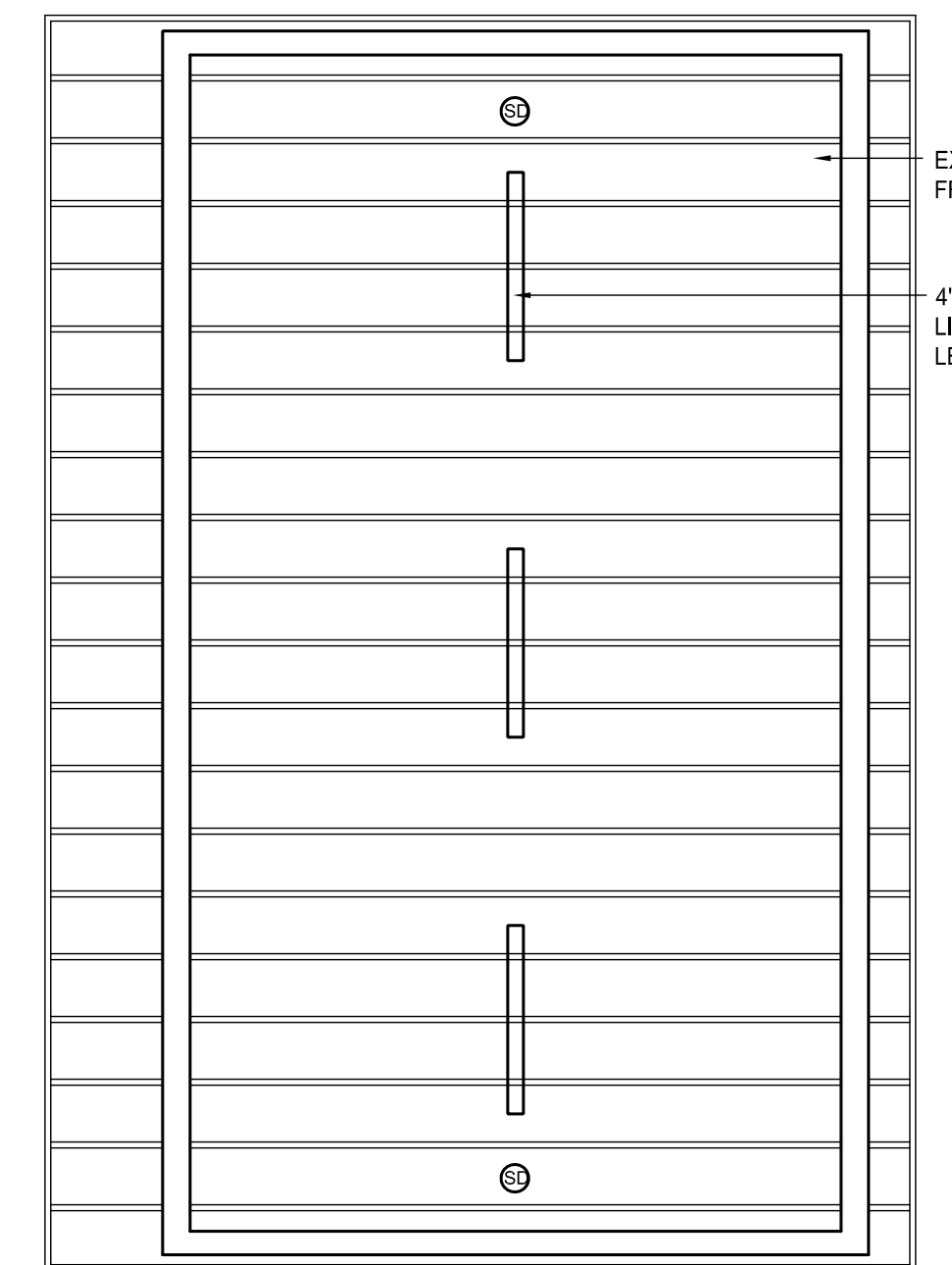


4 ROOF FRAMING PLAN  
2.1 2.1 1/4" = 1'-0"

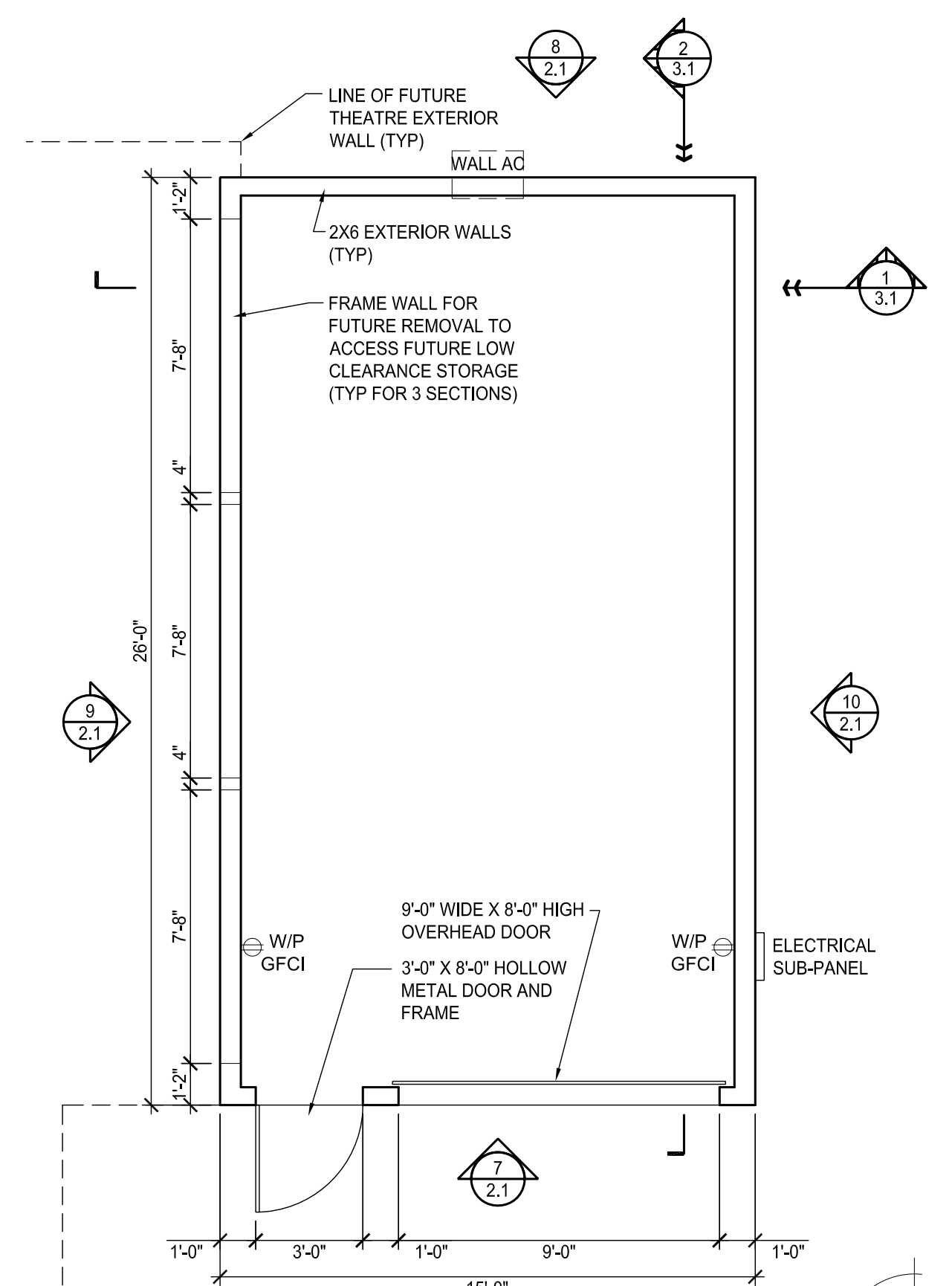
PROVIDE BASE PLATE ANCHOR BOLTS AND SIMPSON ZMAX HURRICANE STRAPPING, CLIPS AND HOLD-DOWNS AS REQUIRED TO MEET CITY CONTINUOUS LOAD PATH REINFORCING REQUIREMENTS



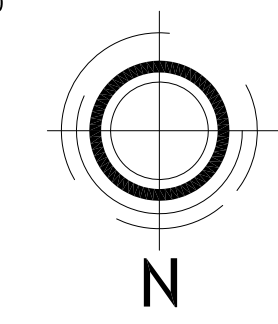
3 FOUNDATION PLAN  
2.1 2.1 1/4" = 1'-0"



2 REF CLG PLAN - ROOF  
2.1 2.1 1/4" = 1'-0"



1 FLOOR PLAN  
2.1 2.1 1/4" = 1'-0"



BAY ST LOUIS LITTLE  
THEATRE STORAGE SHED  
398 BLAIZE AVENUE  
BAY ST LOUIS MS, 39520

UA PROJECT NO. | 06.107.02  
PROJECT ISSUE DATE: 11 MAY 2026

© unabridged Architecture 2026  
A Professional Limited Liability Company  
The intent of the Contract Documents is to include all items necessary for proper execution and completion of the work by Contractor. The Contract Documents are complementary, and what is required by one shall be as binding as if required by all; performance by the Contractor shall be required only to the extent consistent with the Contract Documents and reasonably inferable from them as being necessary to produce the indicated results.

REVISIONS


PLANS AND ELEVATIONS