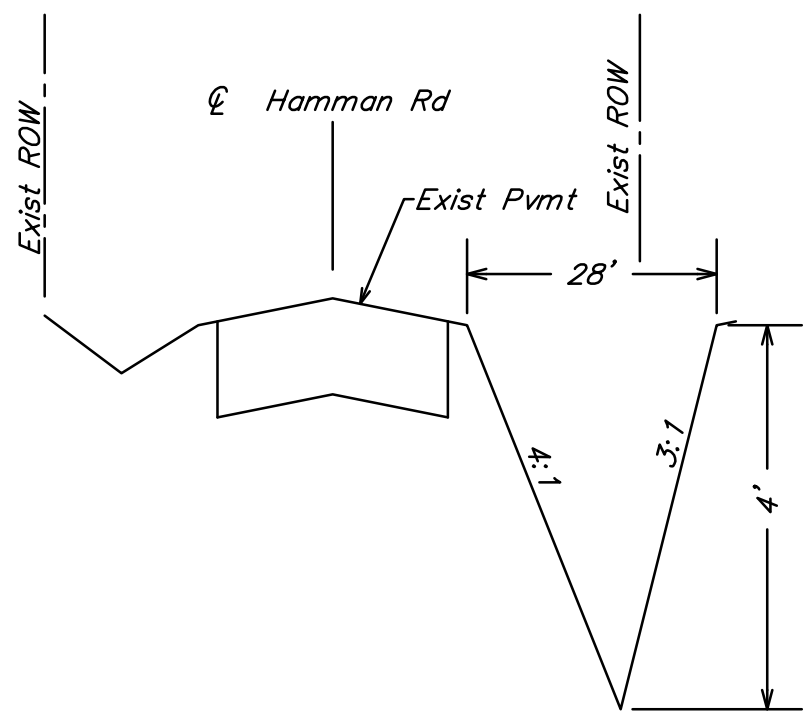
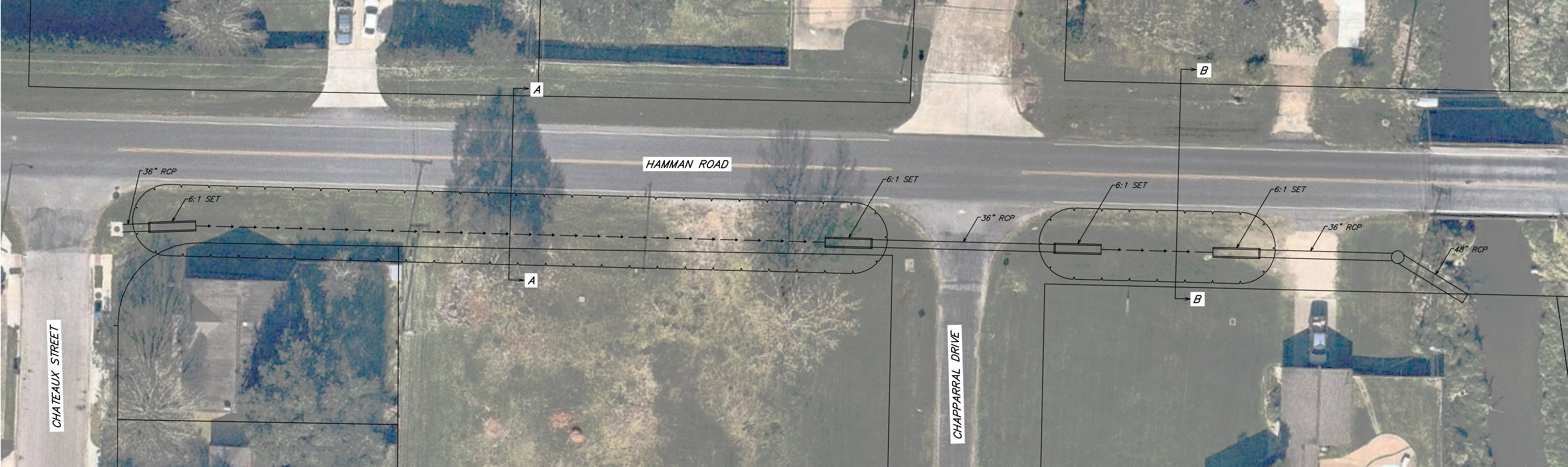
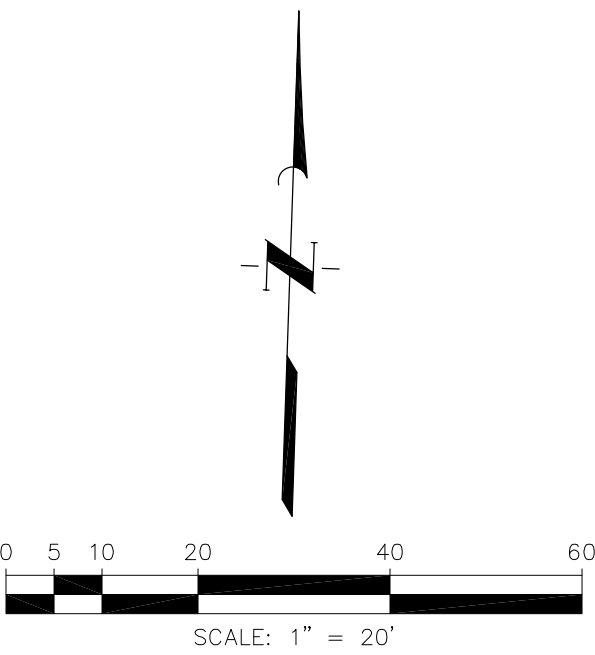
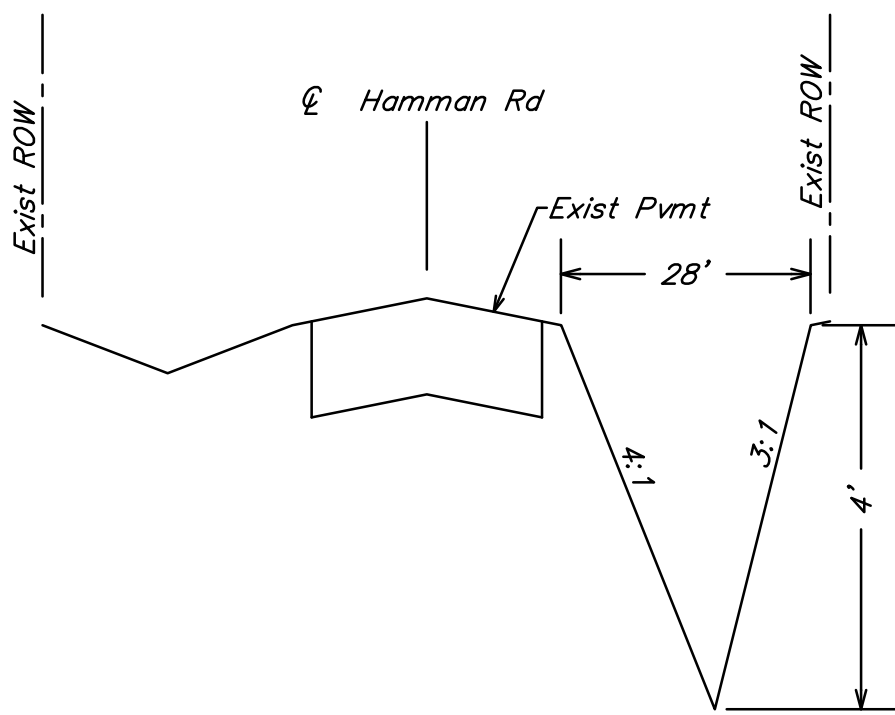


BENCHMARK
ELEVATIONS SHOWN HEREON ON ARE BASED ON TEMPORARY
BENCHMARK, LOCATED IN THE CITY OF BAY CITY, AT THE
HAMMAN ROAD BRIDGE OVER COTTONWOOD CREEK, "X" SET
ON THE NORHT HEADWALL, WITH AN ELEVATION OF 41.52
FEET (NAVD 88).



Typical Section A-A



Typical Section B-B

- Notes:**
1. Ditch designed to have 4:1 front slopes and 3:1 back slopes. Top of bank to be set 2-feet off the edge of pavement.
 2. Pipes designed to be a maximum 36-inches to allow for pavement to be constructed at driveways and side streets.
 3. Ditch under full flow conditions to convey 101.69 cfs. 36" RCP to convey 22.12 cfs.
 4. Historical ditch assumed to be 4-feet deep and have 1.5:1 side slopes. Ditch full flow conditions would convey 39.59 cfs.
 5. Proposed 48" RCP to be convey 45.42 cfs at same slope as ditch.

CITY OF BAY CITY

HAMMAN ROAD
DRAINAGE IMPROVEMENTS

**HAMMAN ROAD DITCH
EXHIBIT**



JONES CARTER

Texas Board of Professional Engineers Registration No. F-439
2322 W. Grand Parkway N. #150 • Katy, Texas 77449
832.913.4000

SCALE: 1"=20' DGN. BY: BTG
DATE: December 2021 DWN. BY: BTG
JOB NO. DWG. NO.
SUBMITTED: SURV. BY:
F.B. NO.

SHEET NO.