



**EHRA**

**ENGINEERING THE FUTURE**

SINCE 1936

### PRACTICE AREAS

We have several practice areas to meet client needs. These include public infrastructure, transportation, hydraulics and hydrology, land planning, land development, land surveying, construction phase services, and landscape architecture. All of these practice areas work together to serve city, county, state, and other governmental agencies along with single-family, retail and commercial development.



LAND SERVICES



PUBLIC  
INFRASTRUCTURE



SITE  
DEVELOPMENT



HYDROLOGY &  
HYDRAULICS



PLANNING &  
VISIONING



LANDSCAPE  
ARCHITECTURE



SURVEY &  
MAPPING SERVICES



DISTRICT SERVICES



WATER &  
WASTEWATER  
FACILITIES



CONSTRUCTION  
PHASE SERVICES

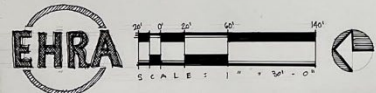


ENGINEERING THE FUTURE  
SINCE 1936

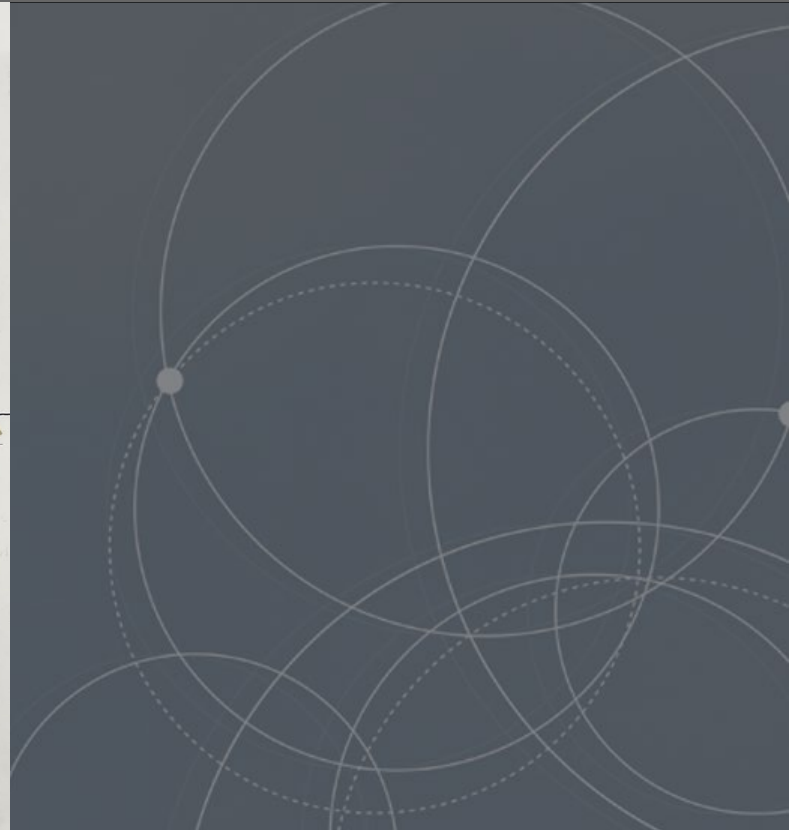
# Cottonwood Creek Park

## Park & Streetscape

Bay City, Texas



**COTTONWOOD CREEK PARK**  
BAY CITY, TEXAS



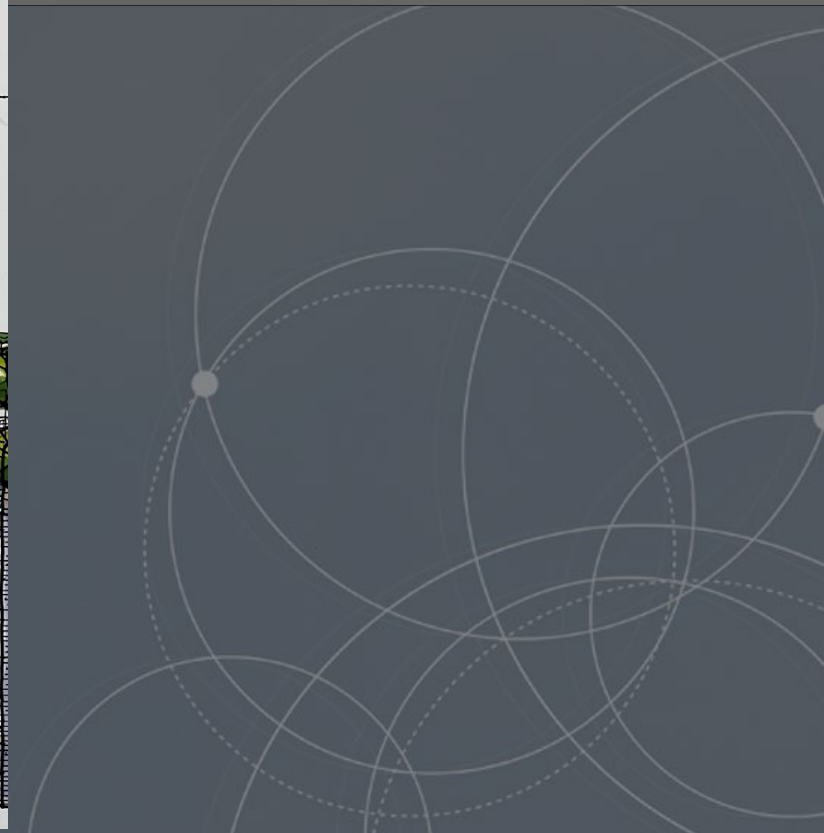


ENGINEERING THE FUTURE  
SINCE 1936

# Cottonwood Creek Park

## Park & Streetscape

Bay City, Texas





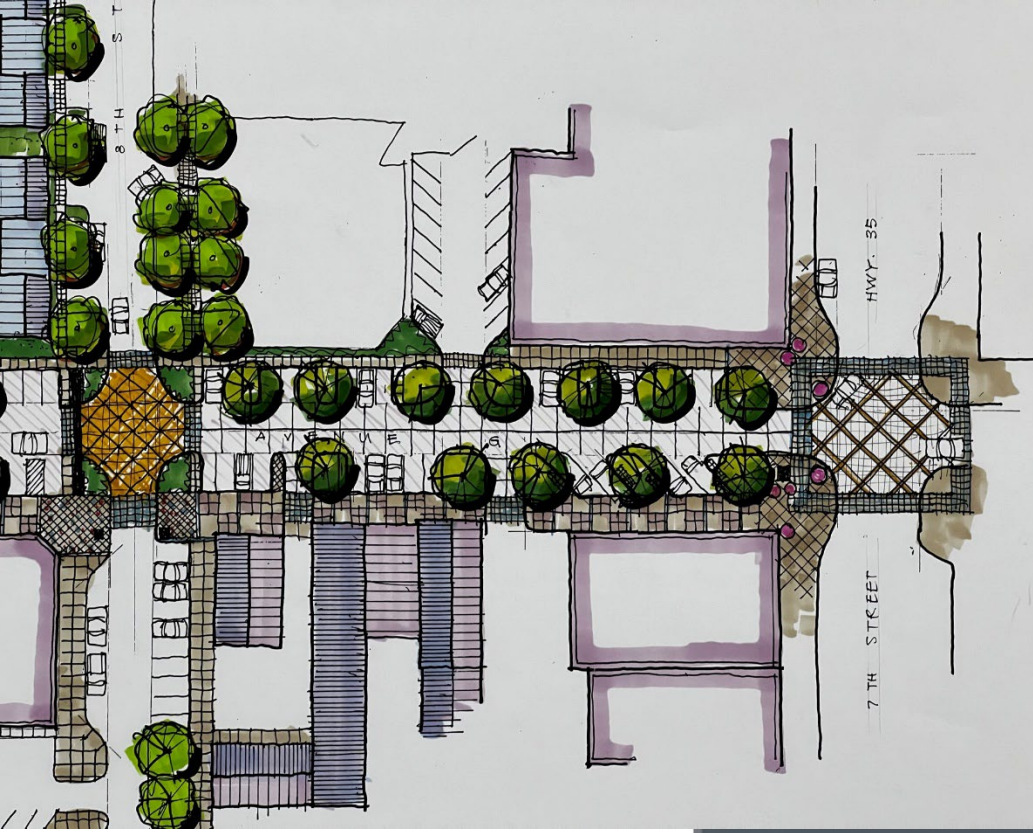


ENGINEERING THE FUTURE  
SINCE 1936

# Cottonwood Creek Park

## Park & Streetscape

Bay City, Texas



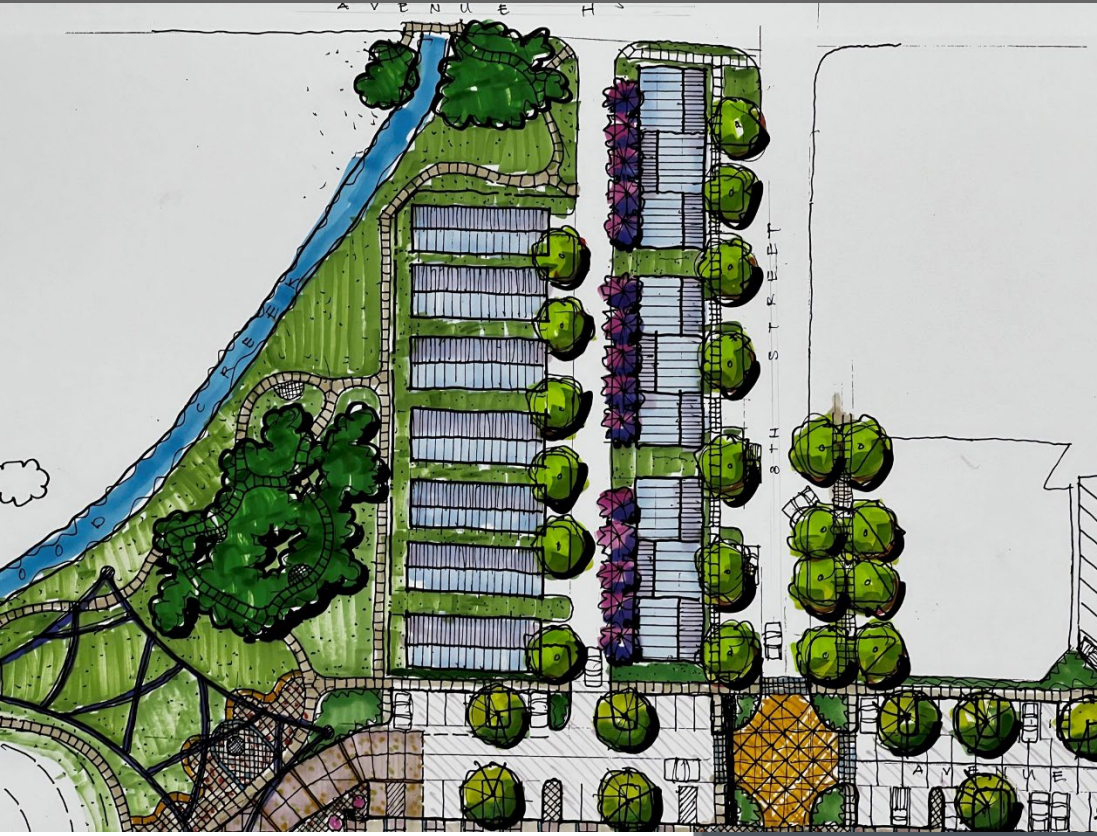


ENGINEERING THE FUTURE  
SINCE 1936

# Cottonwood Creek Park

## Park & Streetscape

Bay City, Texas





ENGINEERING THE FUTURE  
SINCE 1936

# Cottonwood Creek Park

## Opinion of Probable Costs

Bay City, Texas

City of Bay City  
Cottonwood Creek Park  
Opinion of Probable Construction Costs

Schematic Design  
03/28/22

PARK AREA					
ITEM	DESCRIPTION	QTY	UNIT	TOTAL	SUBTOTAL1
1- 1	Parking / Auto Court with Special Pavement	SF 13,100	\$15.00	\$196,500	
1- 3	Flatwork	SF 9,000	\$7.50	\$67,500	
1- 4	Seatwall	LF 134	\$125	\$16,750	
1- 5	Concrete Trail / Sidewalk	SF 10,000	\$5	\$50,000	
1- 6	Sculpture Exhibit Plaza with Amenities	LS 1	\$60,000	\$60,000	
1- 7	Stage with Amenities	LS 1	\$15,000	\$15,000	
1- 8	Shade Structure	EA 1	\$250,000	\$250,000	
1- 9	Furnishings	LS 1	\$35,000	\$35,000	
1- 10	Lighting	LS 1	\$100,000	\$100,000	
1- 11	Landscape and Irrigation	LS 1	\$50,000	\$50,000	\$840,750
				<b>ESTIMATED SUBTOTAL</b>	<b>\$840,750</b>
<b>PARK</b>				Contingency 20%	\$168,150
				<b>ESTIMATED TOTAL</b>	<b>\$1,008,900</b>

STREETSCAPE					
ITEM	DESCRIPTION	QTY	UNIT	TOTAL	CATEGORY TOTAL
2- 1	Site Prep and Demolition	LS 1	\$75,000	\$75,000	
2- 2	Parking	SF 13,700	\$7.50	\$102,750	
2- 3	Special Pavement	SF 5,700	\$15	\$85,500	
2- 4	Flatwork	SF 3,250	\$7.50	\$24,375	
2- 5	Trees	EA 27	\$600	\$16,200	
2- 6	Street Lights	LS 1	\$80,000	\$80,000	
2- 7	Entry, Monumentation & Wayfinding	LS 1	\$250,000	\$250,000	
2- 8	Furnishings	LS 1	\$35,000	\$35,000	
2- 9	Irrigation	LS 1	\$75,000	\$75,000	\$743,825
				<b>ESTIMATED SUBTOTAL</b>	<b>\$743,825</b>
<b>STREETSCAPE</b>				Contingency 20%	\$148,765
				<b>ESTIMATED TOTAL</b>	<b>\$892,590</b>

				<b>ESTIMATED SUBTOTAL</b>	<b>\$1,584,575</b>
<b>PROJECT TOTAL</b>				Contingency 20%	\$316,915
				<b>ESTIMATED TOTAL</b>	<b>\$1,901,490</b>



**ENGINEERING** THE FUTURE  
SINCE 1936

**10011 MEADOWGLEN  
HOUSTON, TX 77042  
[www.EHRAINC.COM](http://www.EHRAINC.COM)**