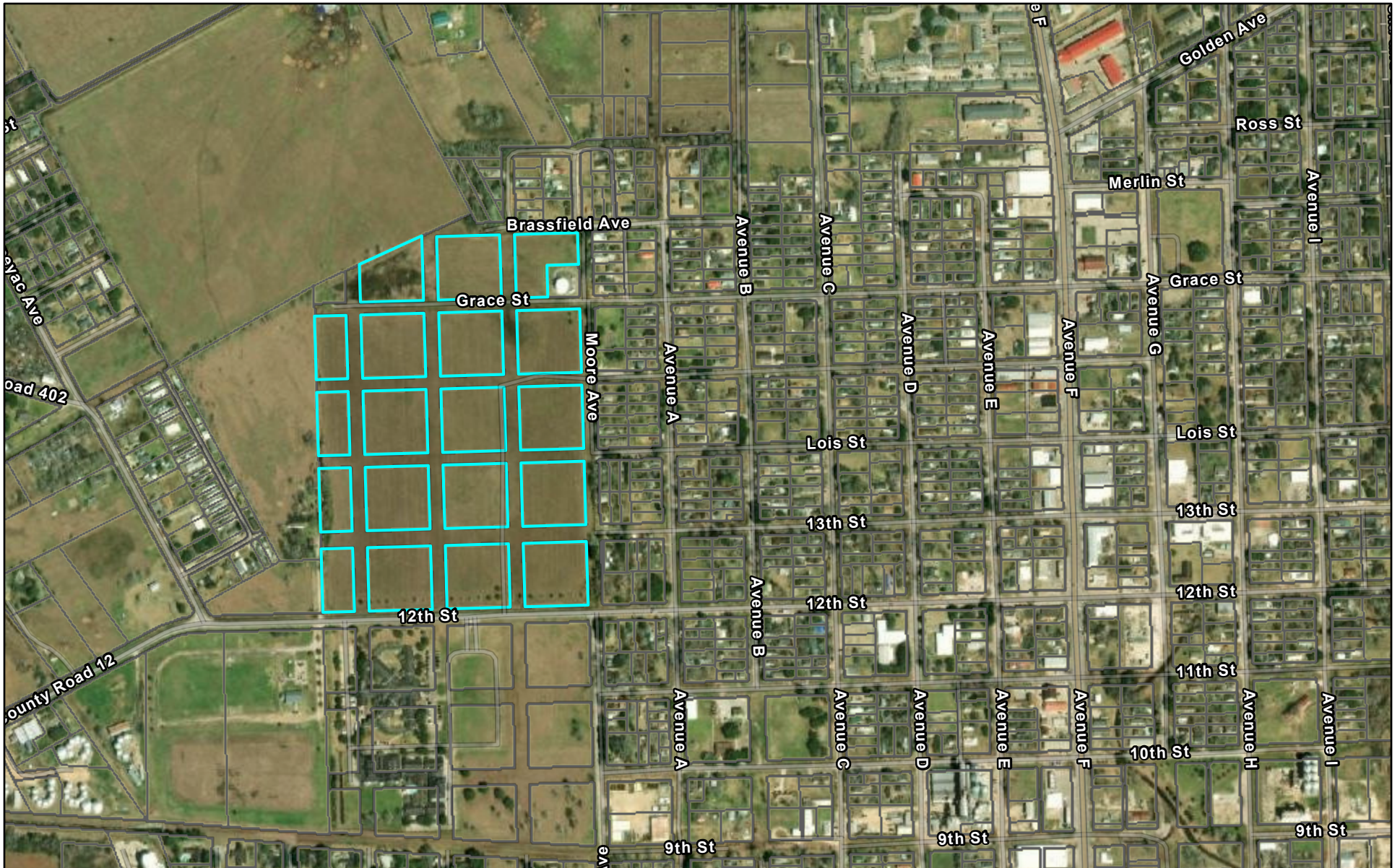


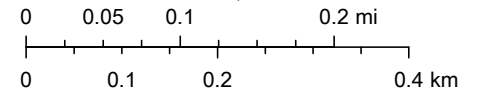
12th St West Development - MCAD PID No 43390



12/9/2022, 11:20:14 AM

 Parcels

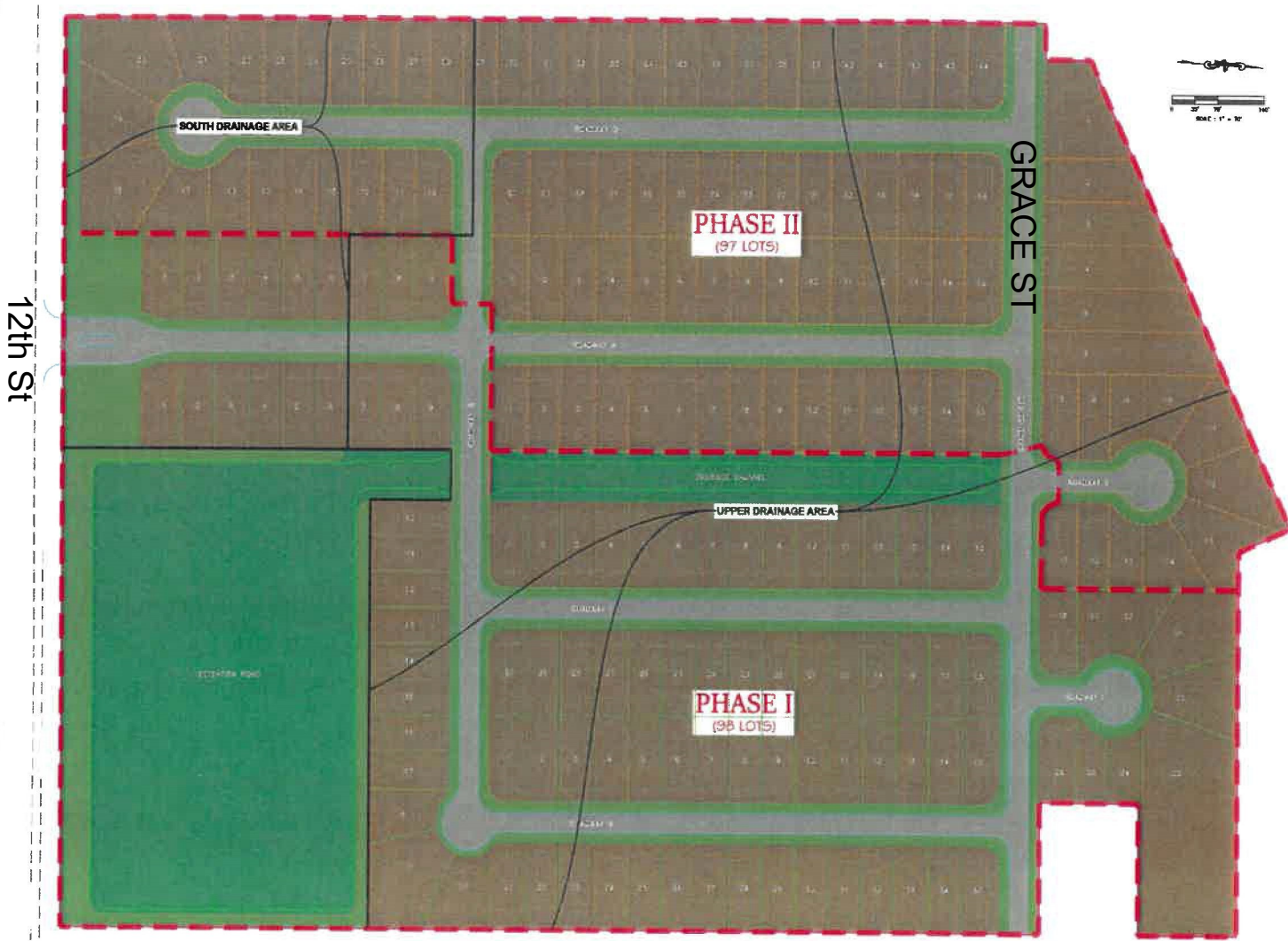
1:9,028



Esri Community Maps Contributors, Texas Parks & Wildlife, © OpenStreetMap, Microsoft, CONANP, Esri, HERE, Garmin, Foursquare,

Matagorda County Appraisal District, Harris Govern -- www.harrisgovern.com

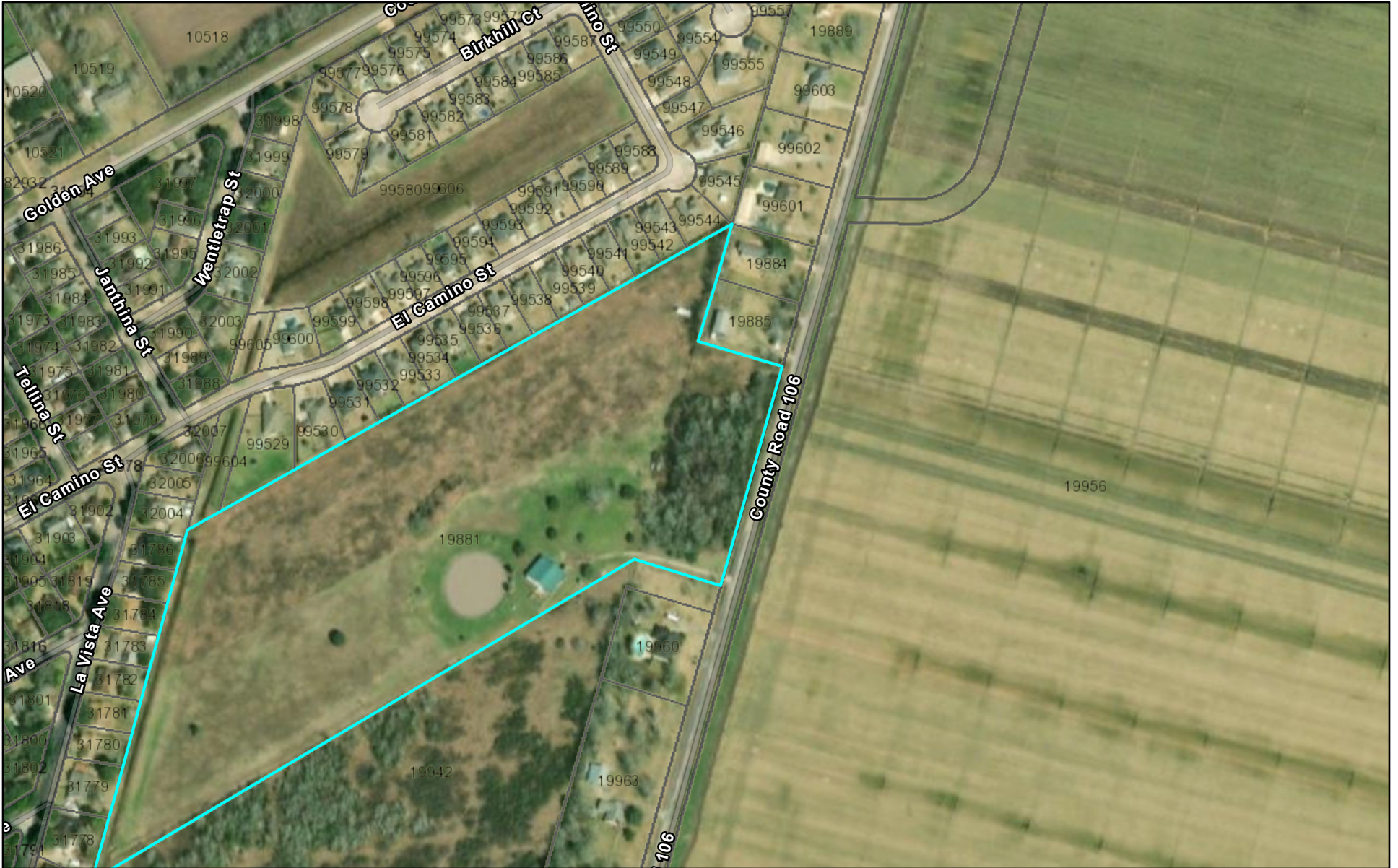
This product is for informational purposes only and may not have been prepared for or be suitable for legal, engineering, or surveying purposes. It does not represent an on-the-ground survey and represents only the approximate relative location of property boundaries.



12th St, NW of Moore Ave

Exhibit 2: Subdivision Site Plan Layout

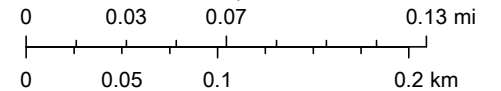
Skelly Rd Development - MCAD PID No 19881



12/9/2022, 11:18:53 AM

 Parcels

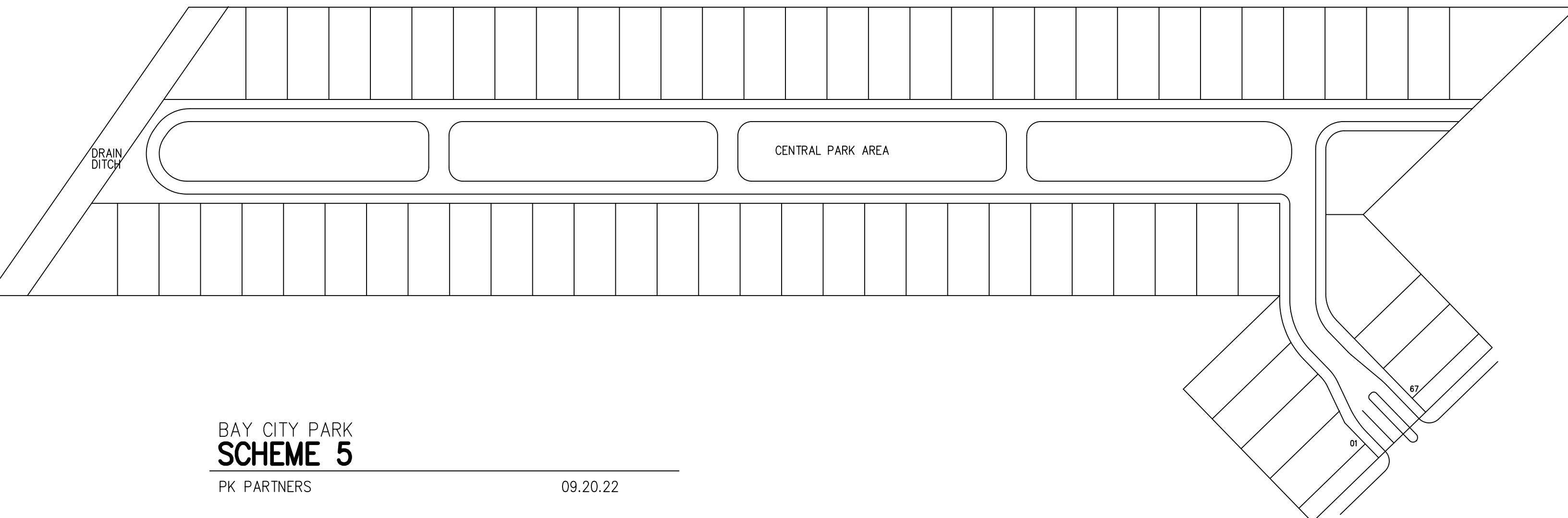
1:4,514



Esri Community Maps Contributors, Texas Parks & Wildlife, ©
OpenStreetMap, Microsoft, CONANP, Esri, HERE, Garmin, Foursquare,

Matagorda County Appraisal District, Harris Govern -- www.harrisgovern.com

This product is for informational purposes only and may not have been prepared for or be suitable for legal, engineering, or surveying purposes. It does not represent an on-the-ground survey and represents only the approximate relative location of property boundaries.



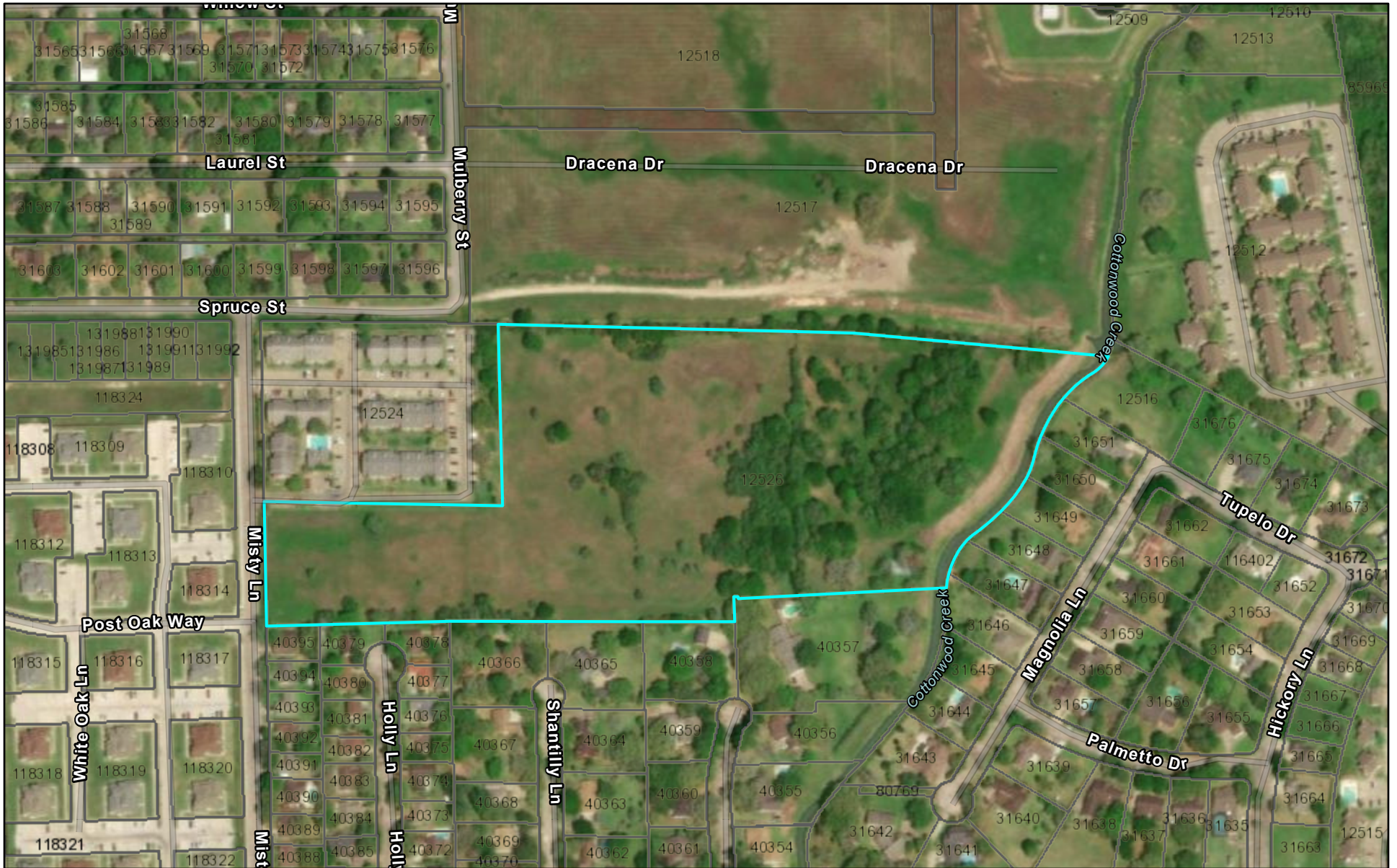
BAY CITY PARK
SCHEME 5

PK PARTNERS

09.20.22

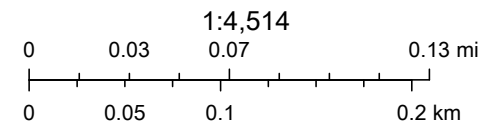
Skelly Road

Misty Lane 4-plexes - MCAD PID No 12526



12/9/2022, 11:15:27 AM

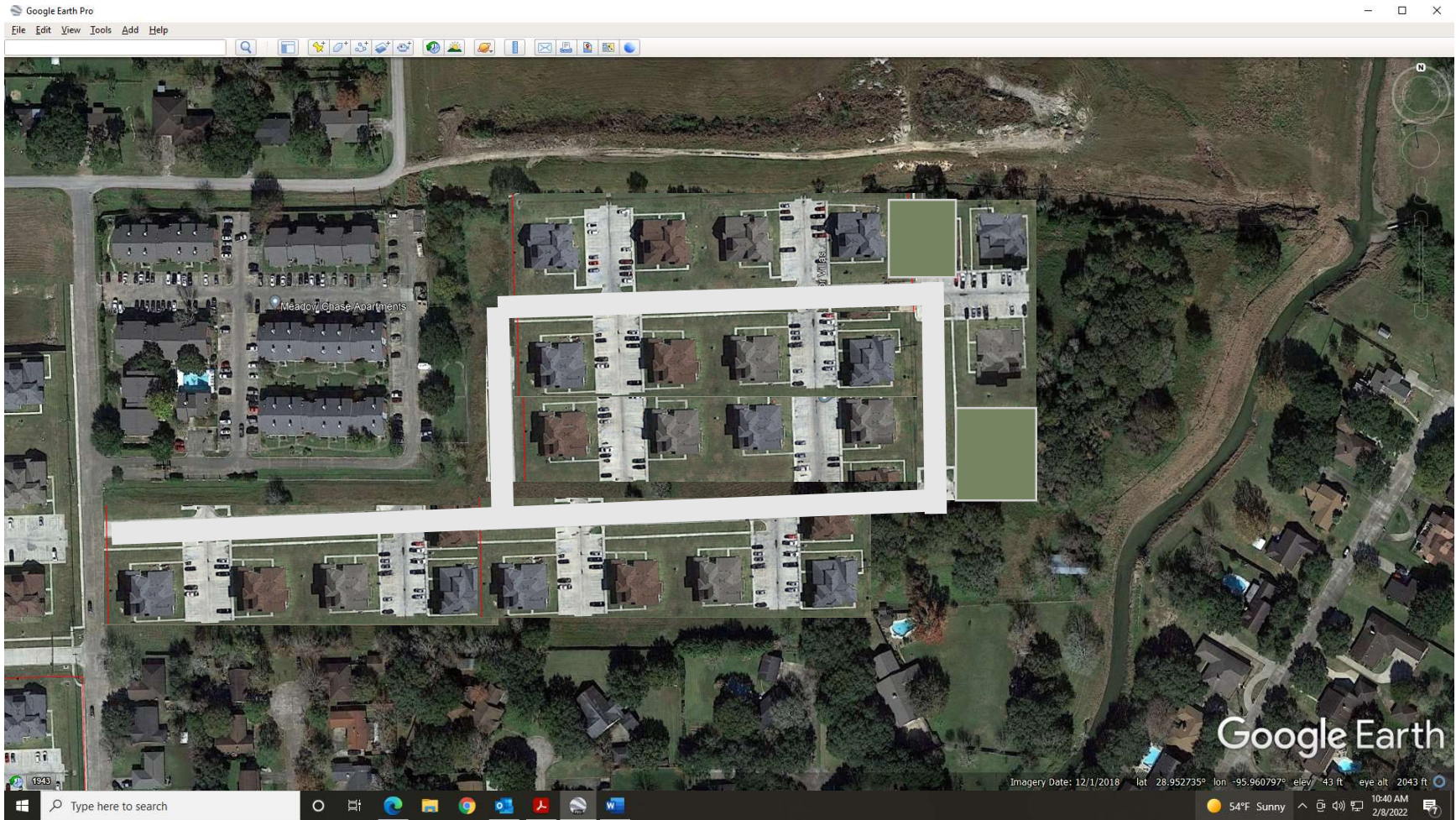
□ Parcels



Esri Community Maps Contributors, Texas Parks & Wildlife, © OpenStreetMap, Microsoft, CONANP, Esri, HERE, Garmin, Foursquare,

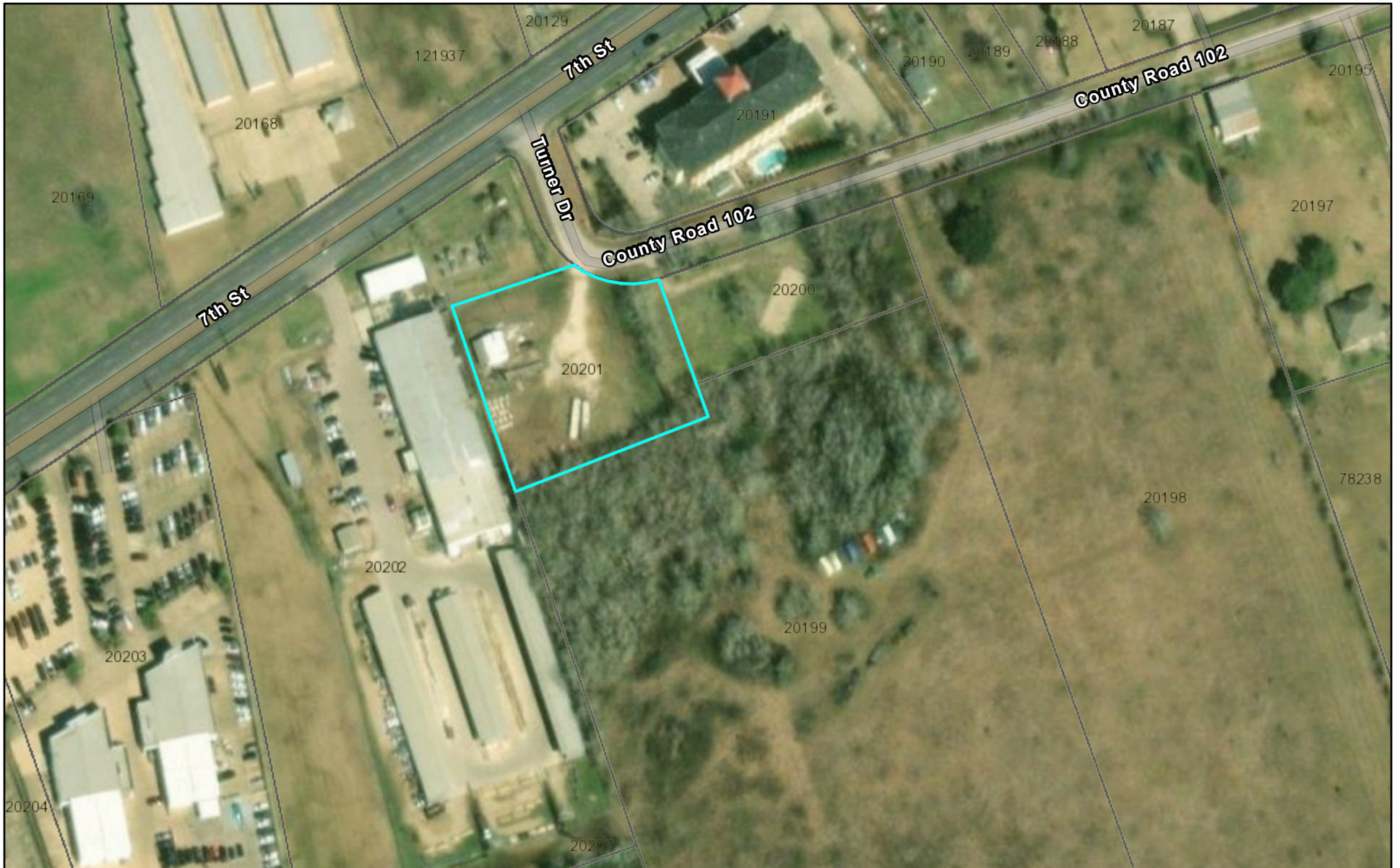
Matagorda County Appraisal District, Harris Govern -- www.harrisgovern.com

This product is for informational purposes only and may not have been prepared for or be suitable for legal, engineering, or surveying purposes. It does not represent an on-the-ground survey and represents only the approximate relative location of property boundaries.



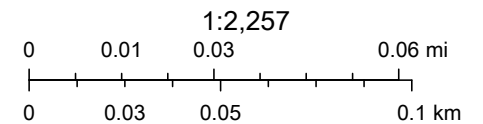
Misty Lane

CR 102 Development - MCAD PID No 20201



12/9/2022, 11:17:48 AM

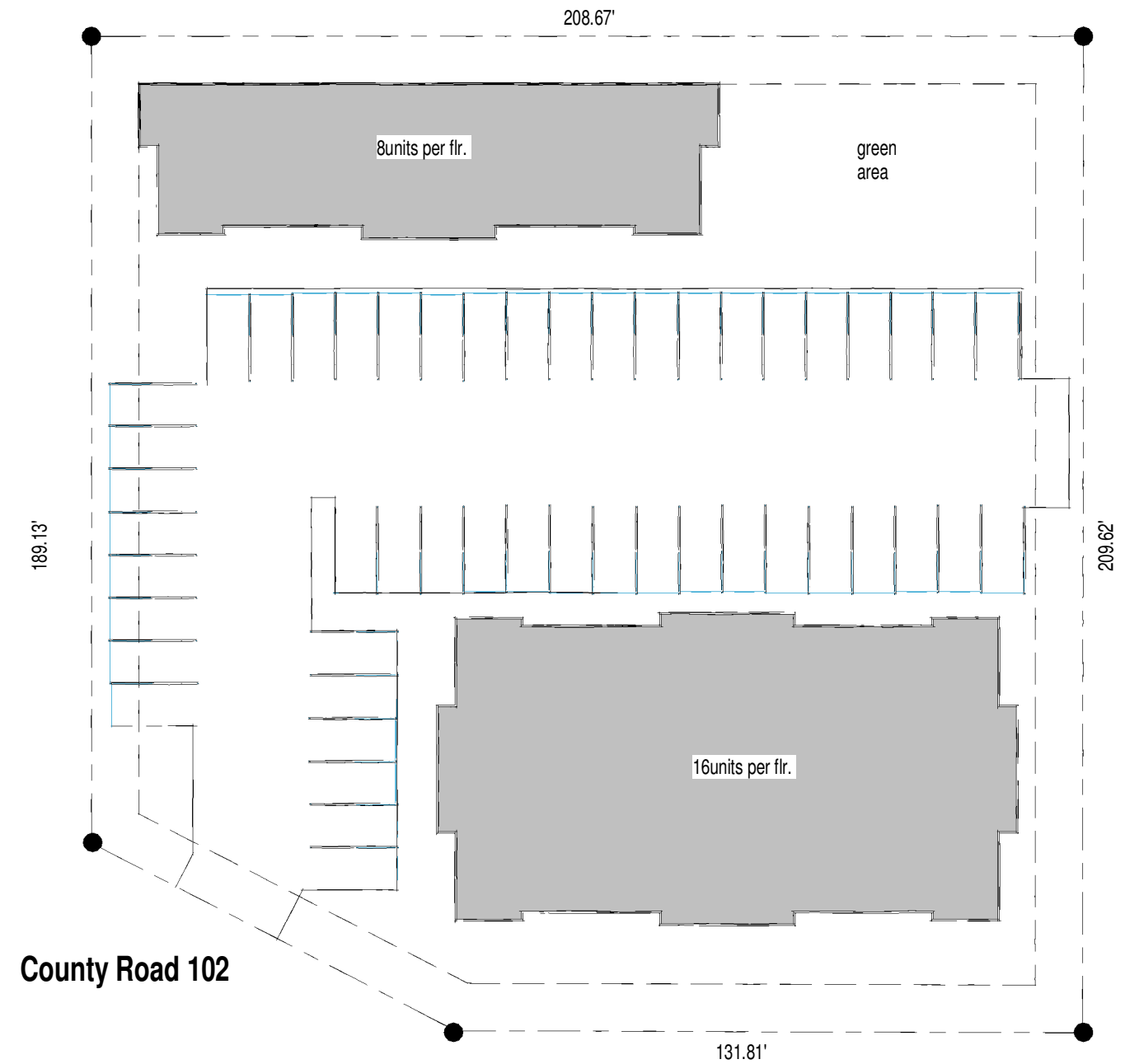
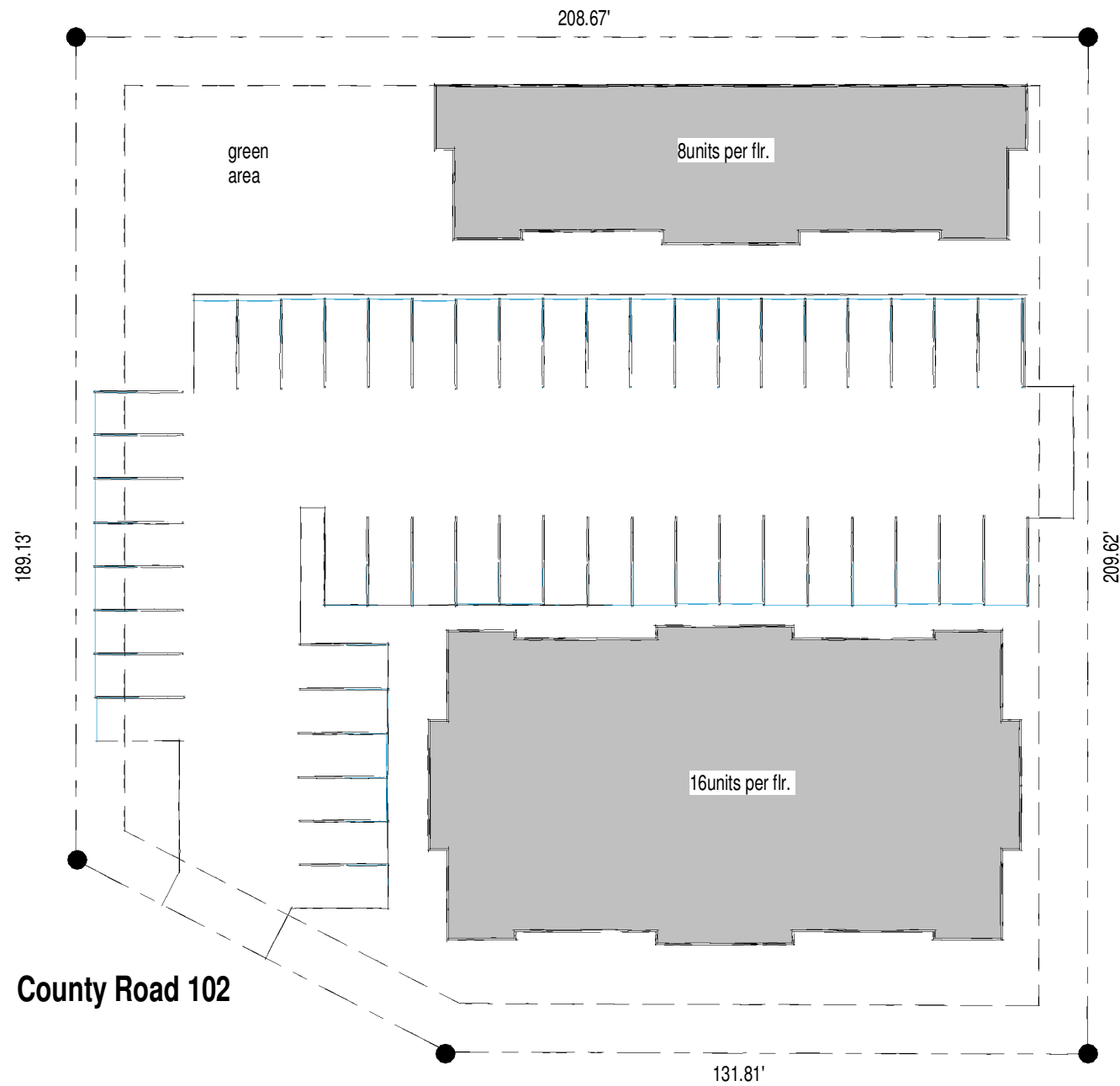
Parcels



Esri Community Maps Contributors, Texas Parks & Wildlife, © OpenStreetMap, Microsoft, CONANP, Esri, HERE, Garmin, Foursquare,

Matagorda County Appraisal District, Harris Govern -- www.harrisgovern.com

This product is for informational purposes only and may not have been prepared for or be suitable for legal, engineering, or surveying purposes. It does not represent an on-the-ground survey and represents only the approximate relative location of property boundaries.



OPTION 1

OPTION 2

PARKING SPACES REQUIRED
 (24 UNITS X 2 SPACES PER UNIT = 48 SPACES)

CR 102 (Turner Rd)

jmack Architects

5353 West Alabama Street, Suite 695
 Houston, Texas 77056
 713.524.9524 fax: 713.583.9985