

- ➔ Gravity to proposed lift station
- ➔ Gravity to tie in at Svetlik
- ➔ Short force main ties into gravity to Svetlik

**CONCEPTUAL WASTEWATER PLAN -
MADDOX SUBDIVISION
BAY CITY, TEXAS**



DRAWN BY:	D.J.G.
CHECKED BY:	S.P.M.
DATE:	MARCH 4, 2021
SCALE:	1"=250'

G & W ENGINEERS, INC.

● ENGINEERING ● SURVEYING ● PLANNING

205 W. LIVE OAK STREET, PORT LAVACA, TEXAS 77979
 TBP# FIRM NO.: F04188
 (361) 552-4509; PORT LAVACA (979) 323-7100; BAY CITY

PRELIMINARY	
JOB NO.:	8716.001
SHEET NO.:	1 OF 1



**CONCEPTUAL WASTEWATER PLAN -
MADDOX SUBDIVISION
BAY CITY, TEXAS**

DRAWN BY:
D.J.G.
CHECKED BY:
S.P.M.
DATE:
MARCH 4, 2021
SCALE:
1"=250'

G & W ENGINEERS, INC.

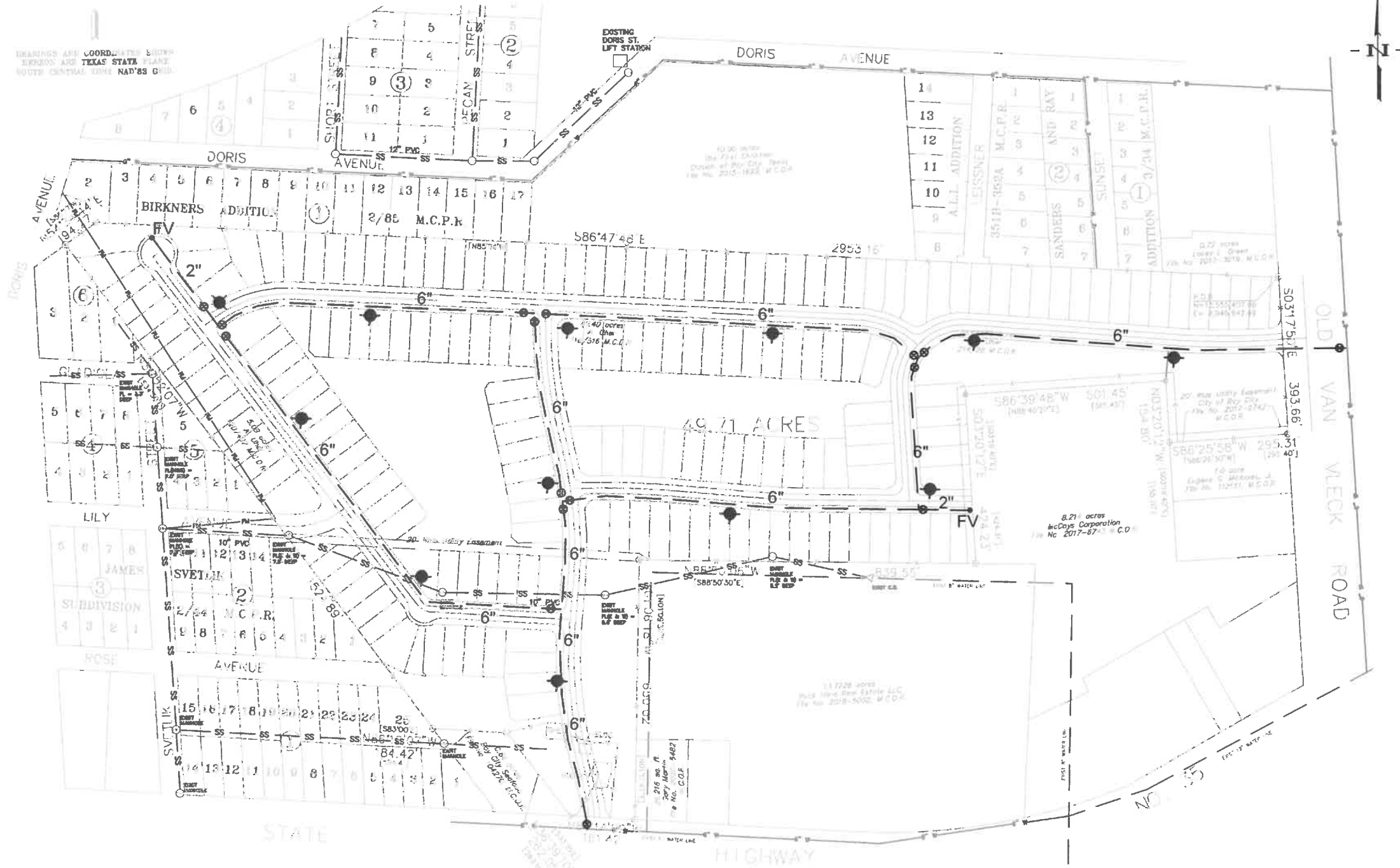
ENGINEERING • SURVEYING • PLANNING

205 W. LIVE OAK STREET, PORT LAVACA, TEXAS 77979
TBP# FIRM NO.: F04188
(361) 552-4509; PORT LAVACA (979) 323-7100; BAY CITY

PRELIMINARY

JOB NO.:
8716.001
SHEET NO.:
1 OF 1

DRAWINGS AND COORDINATES SHOWN
HEREON ARE TEXAS STATE PLANE
NORTH CENTRAL ZONE NAD'83 GRID.



**CONCEPTUAL WATER PLAN -
MADDOX SUBDIVISION
BAY CITY, TEXAS**

DRAWN BY:
D.J.G.
CHECKED BY:
S.P.M.
DATE:
MARCH 4, 2021
SCALE:
1"=250'

G & W ENGINEERS, INC.

ENGINEERING • SURVEYING • PLANNING
205 W. LIVE OAK STREET, PORT LAVACA, TEXAS 77979
TBPE FIRM NO.: F04188
(361) 552-4509; PORT LAVACA (979) 323-7100; BAY CITY

PRELIMINARY

JOB NO.:
8716.001
SHEET NO.:
1 OF 1