



Chick-fil-A

Chick-fil-A
5200 Buffington Road
Atlanta, Georgia
30349-2998



HRGreen.com

HRGreen

CHICK-FIL-A

BAXTER (MN) FSU

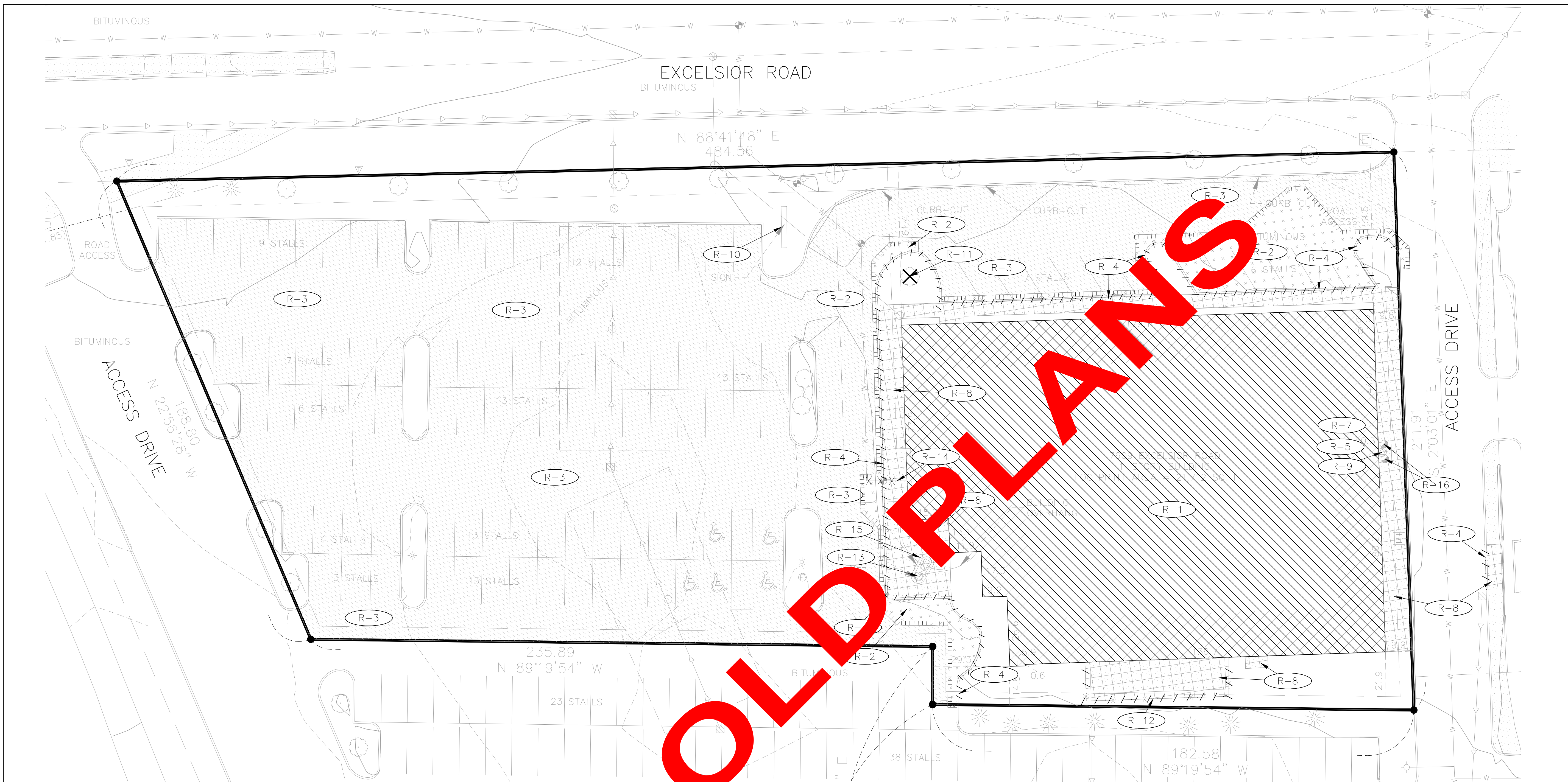
7609 EXCELSIOR ROAD
BAXTER, MN 56425

FSU# 06086

REVISION SCHEDULE
NO. DATE DESCRIPTION

PRELIMINARY

ENGINEER'S PROJECT # 2403792
PRINTED FOR PRELIMINARY
DATE 03/18/2025
DRAWN BY: MRJ
CHECKED BY: JFV
Information contained on this drawing and in all digital files produced for above named project may not be reproduced in any manner without express written or verbal consent from authorized project representatives.
SHEET
SITE DEMOLITION
PLAN
SHEET NUMBER
C-100



OLD PLANS

TRAFFIC CONTROL NOTES:

- ALL APPLICABLE CITY PERMITS, INCLUDING BUT NOT LIMITED TO CLOSURE PERMITS, SHALL BE OBTAINED PRIOR TO ANY CONSTRUCTION WITHIN CITY ROW OR LANE CLOSURES.
- ALL TRAFFIC CONTROL SHALL BE IN ACCORDANCE WITH THE LATEST EDITION OF THE MANUAL ON UNIFORM TRAFFIC CONTROL DEVICES.
- PERMANENT SIGNING THAT CONVEYS A MESSAGE CONTRARY TO THE MESSAGE OF TEMPORARY SIGNING AND NOT APPLICABLE TO THE WORKING CONDITIONS SHALL BE COVERED BY THE CONTRACTOR WHEN DIRECTED BY THE CITY.
- THE CONTRACTOR SHALL COORDINATE HIS TRAFFIC CONTROL WITH OTHER CONSTRUCTION PROJECTS IN THE AREA.
- SIDEWALK CLOSED SIGNS REQUIRED FOR ALL SIDEWALK CLOSURES.
- THE CONTRACTOR IS CAUTIONED NEITHER TO OBSTRUCT NOR REMOVE ANY EXISTING PAVEMENT, NOR TO DISTURB THE EXISTING TRAFFIC PATTERNS MORE THAN IS NECESSARY FOR THE PROPER EXECUTION OF THE WORK.

PROJECT NOTES:

- LAND DISTURBING ACTIVITIES SHALL NOT COMMENCE UNTIL APPROVAL TO DO SO HAS BEEN RECEIVED BY GOVERNING AUTHORITIES. IN ADDITION TO, NO LAND CLEARING OR GRADING SHALL BEGIN UNTIL ALL PERIMETER EROSION AND SEDIMENT CONTROL MEASURES HAVE BEEN INSTALLED. (INCLUDING STORM WATER POLLUTION PREVENTION PLAN PER THE DEVELOPMENT CRITERIA) SEE SHEET C-302 FOR EROSION CONTROL MEASURES)
- ALL EXISTING UTILITIES TO BE FIELD VERIFIED PRIOR TO CONSTRUCTION.
- CONTRACTOR SHALL COORDINATE AND COMPLY WITH ALL UTILITY COMPANIES INVOLVED IN PROJECT AND PAY ALL REQUIRED FEES AND COSTS.
- ALL STRUCTURES & DEBRIS SHALL BE REMOVED PRIOR TO CONSTRUCTION & DISPOSED OF OFFSITE.
- ANY EXISTING FIELD DRAIN TILES ENCOUNTERED SHALL BE RECONNECTED OR CONNECTED TO THE NEAREST STORM SEWER.
- CONTRACTOR TO KEEP ACCESS DRIVE OPEN AT ALL TIMES WITH MINOR CLOSINGS ALLOWED FOR PAVING ACTIVITIES.
- THE CONTRACTOR IS CAUTIONED NEITHER TO OBSTRUCT NOR REMOVE ANY EXISTING PAVEMENT, NOR TO DISTURB THE EXISTING TRAFFIC PATTERNS MORE THAN IS NECESSARY FOR THE PROPER EXECUTION OF THE WORK.
- ALL BITUMINOUS PAVEMENT REMOVAL AREAS SHALL BE SAWCUT.
- CONTRACTOR SHALL INSTALL CONSTRUCTION FENCING AND SIGNAGE AROUND CONSTRUCTION BOUNDARIES TO PROTECT PEDESTRIANS.

STAGING NOTES:

(STAGING SUBJECT TO CHANGES PER SITE CONTRACTORS SCHEDULE AND METHODS OF OPERATION)

1. EROSION CONTROL MEASURES AND STOCKPILE STAGING
2. CONSTRUCTION ENTRANCES
3. PLAN REMOVALS
4. PROPOSED UNDERGROUND
5. GRADING
6. PAVING

REMOVAL TAGS

REMOVALS / RELOCATES / ADJUSTMENTS

NUMBER	REMOVALS / RELOCATES / ADJUSTMENTS	REMARKS
R-1	BUILDING W/ FOUNDATION	REMOVE
R-2	BITUMINOUS PAVEMENT	REMOVE
R-3	SEAL COAT AND RESTRIPE	
R-4	CONCRETE CURB & GUTTER	REMOVE
R-5	ELECTRIC SERVICE & METER	REMOVE (COORD. W/ UTILITY)
R-6	OMITTED	
R-7	TELEPHONE LINE	REMOVE (COORD. W/ UTILITY)
R-8	CONCRETE SIDEWALK	REMOVE
R-9	GAS SERVICE AND METER	REMOVE (COORD. W/ UTILITY)
R-10	MONUMENT SIGN	REMOVE
R-11	TREE	REMOVE (SEE LANDSCAPE PLANS)
R-12	FENCE	REMOVE
R-13	FLAG POLE	REMOVE
R-14	WATER SERVICE	REMOVE (COORD. W/ UTILITY)
R-15	RETAINING WALL	REMOVE
R-16	CONCRETE BOLLARD	REMOVE

LEGEND

- TTTTTTTTT INDICATES FULL DEPTH SAWCUT
- XXXXXX INDICATES CONC./SIDEWALK REMOVAL (FULL DEPTH)
- +++++ INDICATES BIT./ASPHALT REMOVAL (FULL DEPTH)
- ||||| INDICATES BUILDING AND FOUNDATION
- ||||| INDICATES SEALCOAT AND RESTRIPE
- R-# INDICATES MISC. REMOVAL ITEMS (SEE THIS SHEET FOR SIZE AND QUANTITY)
- DENOTES EXIST. CONCRETE CURB & GUTTER, CONCRETE WALL & FENCE REMOVAL
- XXXXX DENOTES EXIST. UTILITY LINE & PIPE REMOVAL
- X X X X INDICATES TREE AND BRUSH REMOVAL (SEE LANDSCAPING PLANS FOR SIZE AND QUANTITY)
- INDICATES TREE AND BRUSH PROTECTION (SEE LANDSCAPING PLANS FOR SIZE AND QUANTITY)
- X INDICATES LIGHT POLE REMOVAL



BAR IS ONE INCH ON OFFICIAL DRAWINGS
1" = 20'
IF NOT ONE INCH, ADJUST SCALE ACCORDINGLY

PRELIMINARY
NOT FOR CONSTRUCTION



CALL: 1-800-252-1166

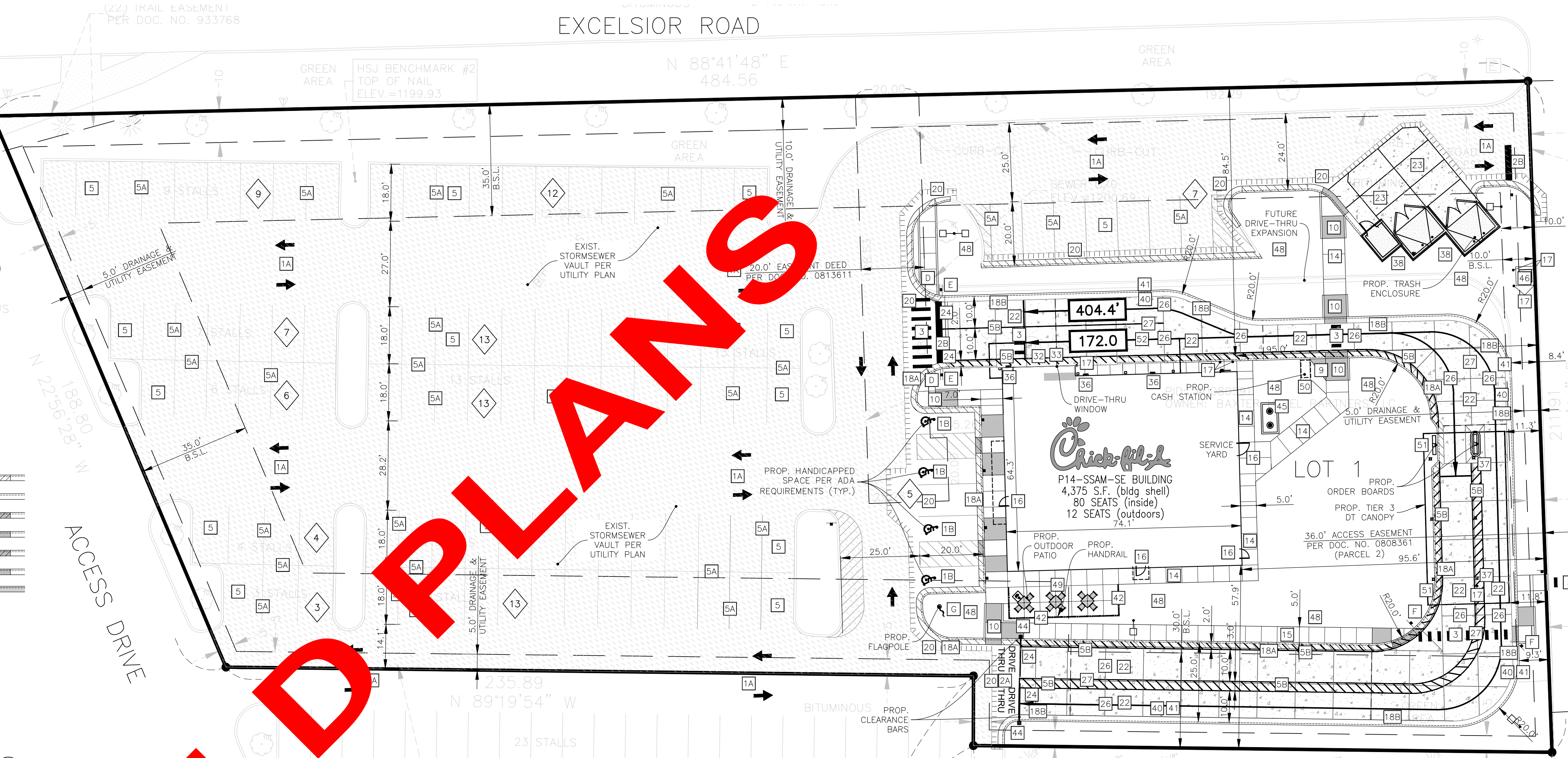
WITH THE FOLLOWING:
COUNTY CROW WING COUNTY - S08-T133N-R28W
CITY-TOWNSHIP BAXTER
PARCEL ID. NO.# 40080591

1-800-252-1166
WWW.GOPHERSTATEONECALL.ORG

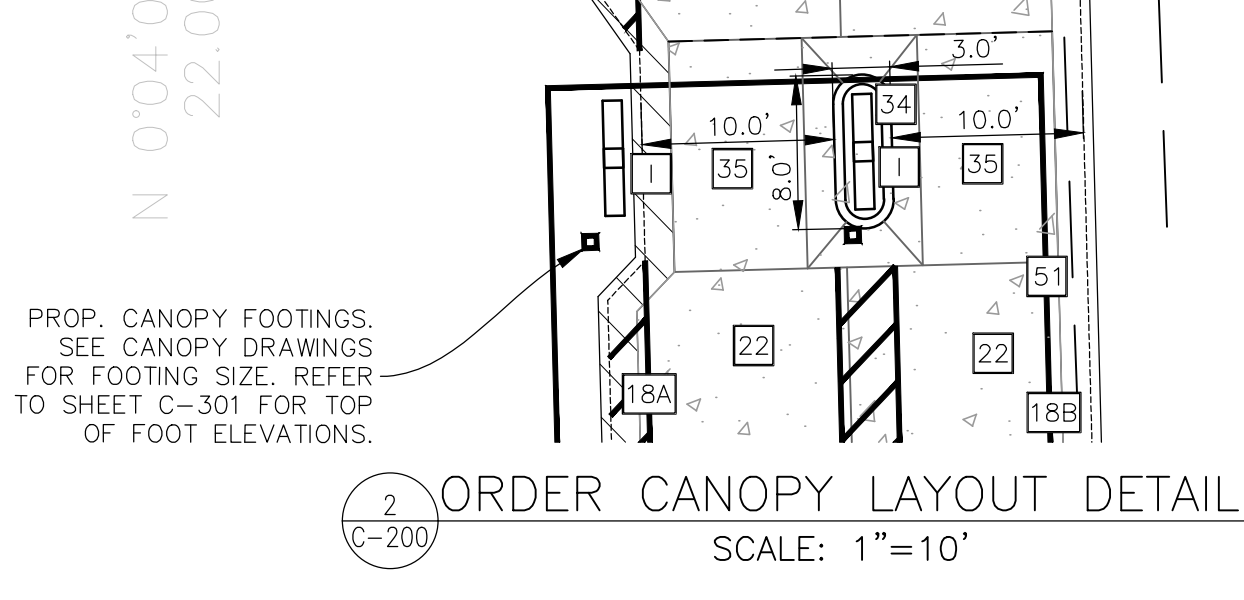
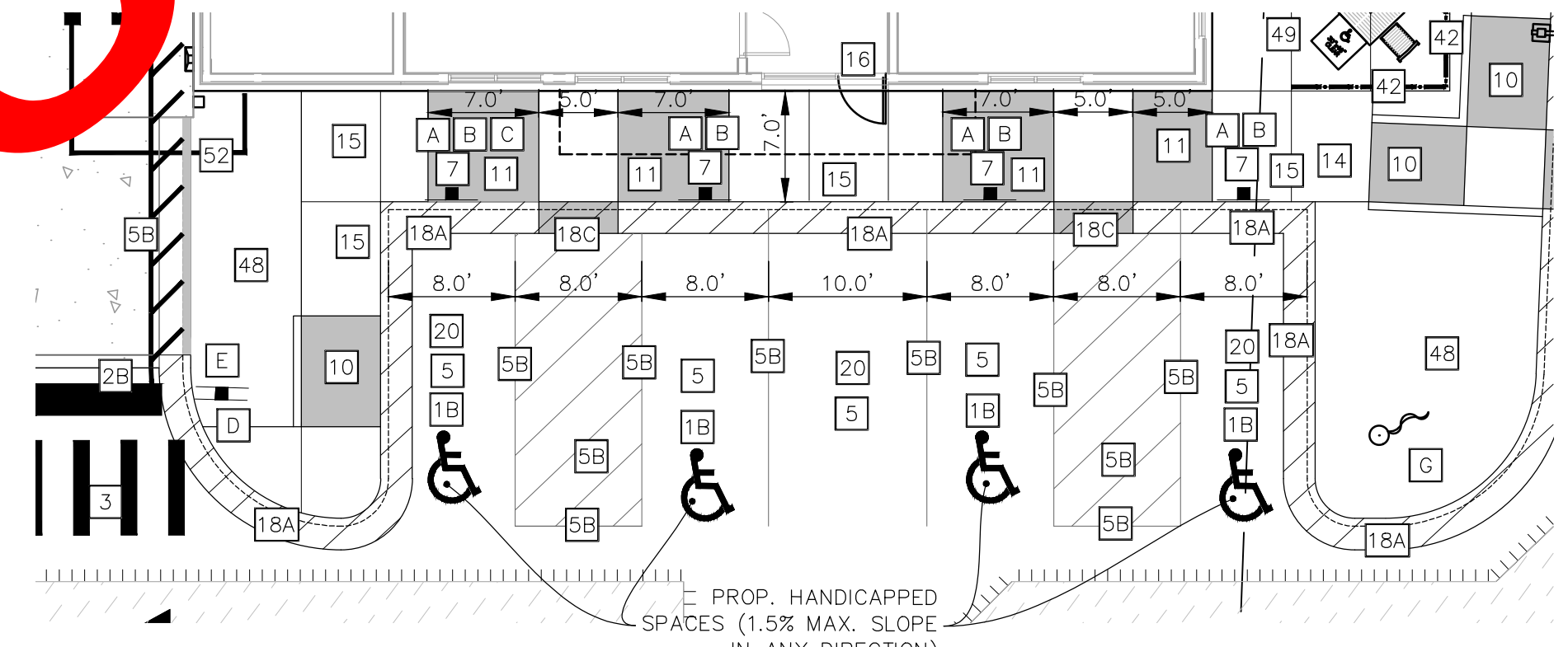
48 hours before you dig
(Excluding Sat., Sun. & Holidays)

SITE PLAN DESIGN NOTES & KEY PLAN

- 1A DIRECTIONAL ARROW (1A C-400)
- 1B PAINTED HANDICAP PARKING SYMBOL (1B C-400)
- 2A DRIVE-THRU GRAPHICS (2A C-400)
- 2B STOP BAR GRAPHIC (2B C-400)
- 3 CROSSWALK MARKINGS (3 C-400)
- 4 MULTI-LANE DIRECTIONAL GRAPHICS (4 C-400)
- 5 STANDARD OR HANDICAP PARKING STALL PER CODE (5 C-400)
- 5A 4" SOLID WHITE STRIPING (5A C-400)
- 5B 4" SOLID YELLOW STRIPING (5B C-400)
- 5C 4" SKIP-DASH YELLOW STRIPING (5C C-400)
- 6 SOLID-PLASTIC WHEEL STOP (6 C-400)
- 7 BOLLARD MOUNTED SIGN (7 C-400)
- 8 CURB RAMP w/ SHORT FLARED SIDES (GRASSED AREAS) (8 C-400)
- 9 CURB RAMP w/ FLARED SIDES (IN SIDEWALK) (9 C-400)
- 10 RETURNED CURB HANDICAP RAMP (10 C-400)
- 11 SIDEWALK ACCESSIBLE RAMP (11 C-401)
- 12 DETECTABLE WARNING DEVICE (12 C-401)
- 13 TYPICAL ADA RAMP & HANDRAIL (13 C-401)
- 14 CONCRETE SIDEWALK (14 C-401)
- 15 CONCRETE SIDEWALK w/ CURB & GUTTER (15 C-401)
- 16 ENTRY DOOR FROST SLAB DETAIL (16 C-401)
- 17 CONCRETE BOLLARD (17 C-401)
- 18 CONCRETE CURB & GUTTER (18 C-401)
- 18A SPILLING CURB & GUTTER (18A C-401)
- 18B CATCHING CURB & GUTTER (18B C-401)
- 18C DEPRESSED SPILLING CURB & GUTTER (18C C-401)
- 18D DEPRESSED CATCHING CURB & GUTTER (18D C-401)
- 18E SPILLING GUTTER SECTION AT ACCESSIBLE RAMP (18E C-401)
- 18F CATCHING GUTTER SECTION AT ACCESSIBLE RAMP (18F C-401)
- 18G MOUNTABLE CURB & GUTTER (18G C-401)
- 19 LANDSCAPE & IRRIGATION PROTECTOR (19 C-401)
- 20 TYPICAL HMAC PAVEMENT SECTION (20 C-402)
- 21 BUTT JOINT (21 C-402)
- 22 CONCRETE PAVEMENT DRIVE-THRU LANE (22 C-402)
- 23 CONCRETE APRON AT TRASH ENCLOSURE (23 C-402)
- 24 PAVEMENT EDGE DETAIL (START & END OF DRIVE-THRU LANES) (24 C-402)
- 25 CONCRETE PAVEMENT SECTIONS (25 C-402)
- 26 TRANSVERSE & LONGITUDINAL CONTRACTION JOINT (26 C-402)
- 27 TRANSVERSE & LONGITUDINAL DOWELED CONSTRUCTION JOINT (27 C-402)
- 28 CONTRACTION JOINT (28 C-402)
- 29 KEYED CONSTRUCTION JOINT (29 C-402)
- 30 LONGITUDINAL BUTT JOINT (30 C-402)
- 31 EXPANSION JOINT (31 C-402)
- 32 DRIVE-THRU PLAN - FLUSH WITH FFE (32 C-403)
- 33 DRIVE-THRU ISOMETRIC (33 C-403)
- 34 DRIVE-THRU ORDER POINT ISLAND (34 C-403)
- 35 MENU BOARD LOOP DETECTION SYSTEM (35 C-403)
- 36 BUILDING DOWNSPOUT CONNECTION (TO SITE DRAINAGE SYSTEM) (36 C-403)
- 37 CANOPY DOWNSPOUT CONNECTION (TO SITE DRAINAGE SYSTEM) (37 C-403)
- 38 SCREENED REFUSE ENCLOSURE (REFER TO ARCH PLANS FOR ADDITIONAL DETAILS) (38 C-403)
- 39 CLEAN-OUT (OUTSIDE OF BUILDING) (39 C-403)
- 40 THICKENED PAVEMENT @ STRUCTURES (40 C-403)
- 41 STORM STRUCTURE WEEP HOLE DETAILS (41 C-403)
- 42 ALUMINUM HANDRAIL (REFER TO ARCH PLANS) (42 C-403)
- 43 OMITTED (43 C-403)
- 44 DRIVE-THRU CLEARANCE BAR (REFER TO SIGNAGE PACKAGE) (44 C-403)
- 45 GREASE TRAP (45 C-403)
- 46 PROPOSED TRANSFORMER (46 C-403)
- 47 BIKE RACK (47 C-403)
- 48 LANDSCAPED AREA (48 C-403)
- 49 TYPICAL LOCATION FOR OUTDOOR TABLES (REFER TO ARCH PLANS) (49 C-403)
- 50 CONCRETE PAD FOR OPTIONAL CASH STATION (50 C-403)
- 51 FREE-STANDING ORDER POINT CANOPY (51 C-403)
- 52 FREE-STANDING OUTSIDE MEAL DELIVERY CANOPY (52 C-403)



OLD PLANS



SITE DATA:

- PARCEL ID #: 40080591
- ZONING: C2 (REGIONAL COMMERCIAL DISTRICT)
- PROP. CFA LOT SIZE: 86,134± SQ. FT. (1.977± ACRES)

BUILDING DATA:

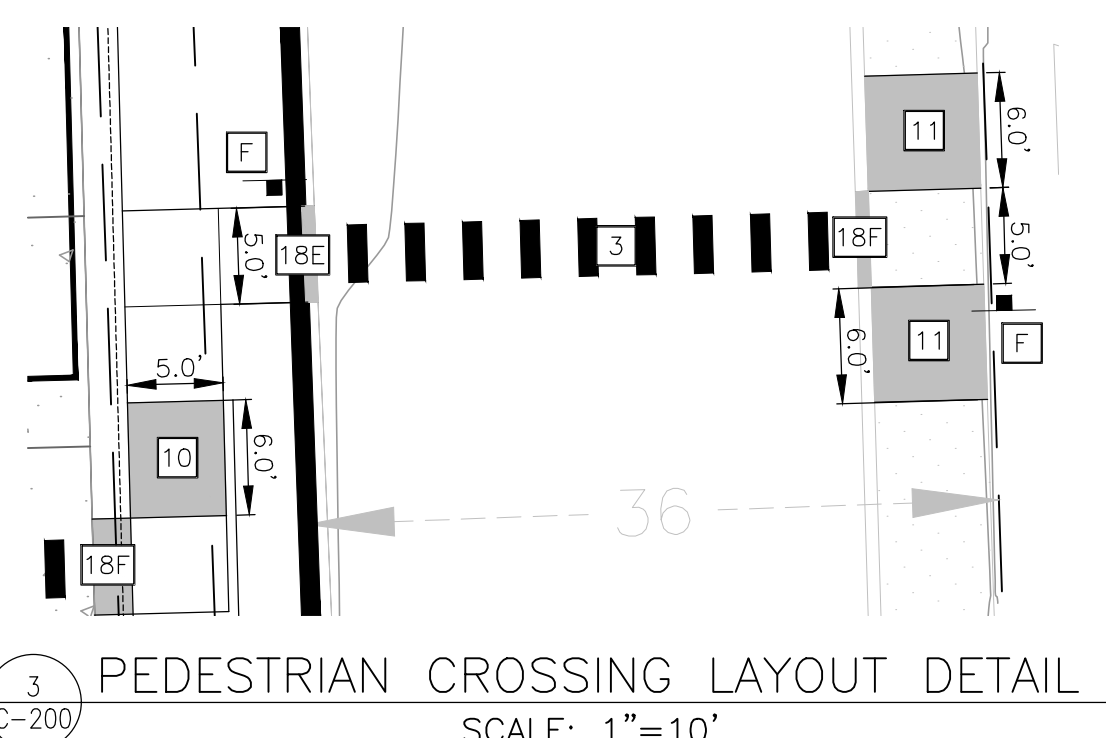
- BUILDING FLOOR AREA: 4,375± SQ. FT.
- TOTAL NUMBER OF SEATS = 92
- INDOOR SEATS = 80
- OUTDOOR SEATS = 12

PARKING DATA:

- NUMBER OF REGULAR PARKING SPACES: 101
- NUMBER OF ADA SPACES: 4
- TOTAL NUMBER OF SPACES PROVIDED: 105
- TOTAL NUMBER OF SPACES REQUIRED: 37
- TYPICAL PARKING WIDTH: 10.0'
- TYPICAL 90° PARKING LENGTH: 20.0'
- MINIMUM ISLE WIDTH: 24.0' (90°)

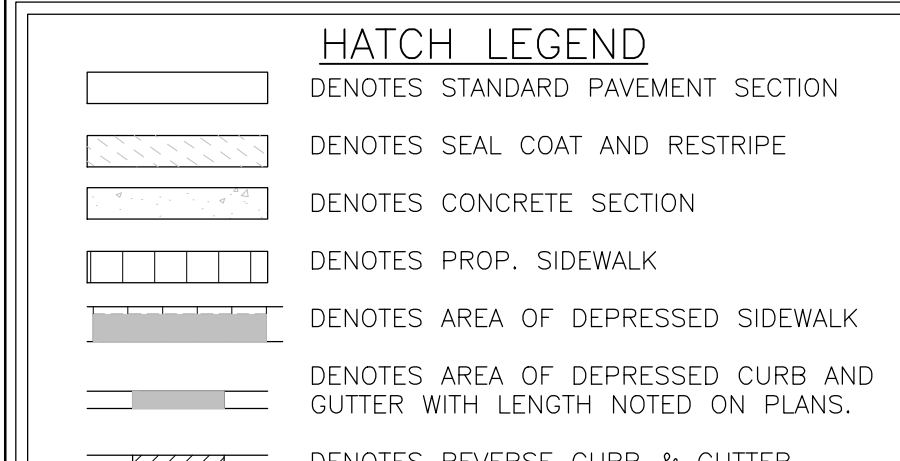
RESTAURANT WITH DRIVE THROUGH PARKING FORMULA:

- 1 SPACE PER 15 SQ.FT. OF GFA EXCLUDING KITCHEN AND DINING AREA OR BASED ON TOTAL SEAT CALCULATIONS LIKE RESTAURANTS (1 SPACE FOR EACH 2.5 SEATS FOR RESTAURANT AREA) WHICHEVER IS GREATER
- REQUIRED PARKING: (80+12=92/2.5)= 36.8 SPACES

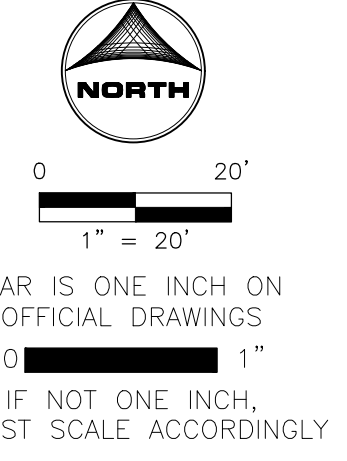


PROJECT NOTES:

- ALL CONSTRUCTION WITHIN PUBLIC R.O.W./ EASEMENTS AND OR CONNECTION TO PUBLIC SEWERS AND STREETS SHALL COMPLY WITH THE CITY OF BAXTER STANDARD CONSTRUCTION SPECIFICATIONS.
- AT LEAST ONE WEEK PRIOR TO ANY CONSTRUCTION WITHIN PUBLIC R.O.W./ EASEMENTS AND/OR ANY CONNECTION TO PUBLIC SEWERS AND STREETS, THE CONTRACTOR SHALL CONTACT THE CITY TO OBTAIN APPLICABLE CITY PERMITS.
- INGRESS/EGRESS WILL BE PROVIDED INTERNAL AND EXTERNAL TO THIS SITE.
- ALL CONCRETE CURB & GUTTER SHALL BE 24" (B6.18) UNLESS OTHERWISE NOTED ON THE PLANS.
- ALL PAVEMENT DIMENSIONS ARE MEASURED TO THE FACE OF CURB UNLESS OTHERWISE NOTED.
- ALL CONSTRUCTION MATERIALS, DUMPSTER, DETACHED TRAILERS OR SIMILAR ITEMS ARE PROHIBITED ON PUBLIC STREETS OR WITHIN THE PUBLIC RIGHT-OF-WAY



- SIGN LEGEND**
- ** CONTRACTOR TO REFER TO THE SIGNAGE PACKAGE FOR PLACEMENT AND SPECIFICATIONS OF ALL SIGNS **
- A HANDICAP PARKING SIGN (SEE SIGNAGE PACKAGE) R7-8; 12" X 18" (TYP.)
 - B HANDICAP PARKING FINE SIGN (SEE SIGNAGE PACKAGE) 6" X 12" (TYP.)
 - C "VAN ACCESSIBLE" SIGN (SEE SIGNAGE PACKAGE) R7-8P; 6" X 12" (TYP.)
 - D "DO NOT ENTER" SIGN (SEE SIGNAGE PACKAGE) R5-1; 24" X 24" (TYP.)
 - E STOP SIGN (SEE SIGNAGE PACKAGE) R1-1; 30" X 30" (TYP.)
 - F CFA PEDESTRIAN CROSSING SIGN (SEE SIGNAGE PACKAGE) 12" X 18" (TYP.)
 - G FLAG POLE (SEE SIGNAGE PACKAGE)
 - H CFA MONUMENT OR PYLON SIGN
 - I DIGITAL DRIVE-THRU MENU BOARDS



PRELIMINARY NOT FOR CONSTRUCTION



Chick-fil-A
5200 Buffington Road
Atlanta, Georgia
30349-2998



CHICK-FIL-A
BAXTER (MN) FSU
7609 EXCELSIOR ROAD
BAXTER, MN 56425

FSU# 06086

REVISION SCHEDULE	NO.	DATE	DESCRIPTION

PRELIMINARY

ENGINEER'S PROJECT #	2403792
PRINTED FOR	PRELIMINARY
DATE	03/18/2025
DRAWN BY:	MRJ
CHECKED BY:	JFV
Information contained on this drawing and in all digital files produced for above named project may not be reproduced in any manner without express written or verbal consent from authorized project representatives.	
SHEET	SITE PLAN
SHEET NUMBER	C-200



Chick-fil-A

Chick-fil-A
5200 Buffington Road
Atlanta, Georgia
30349-2998

HRGreen.com
HRGreen

CHICK-FIL-A
BAXTER (MN) FSU
7609 EXCELSIOR ROAD
BAXTER, MN 56425

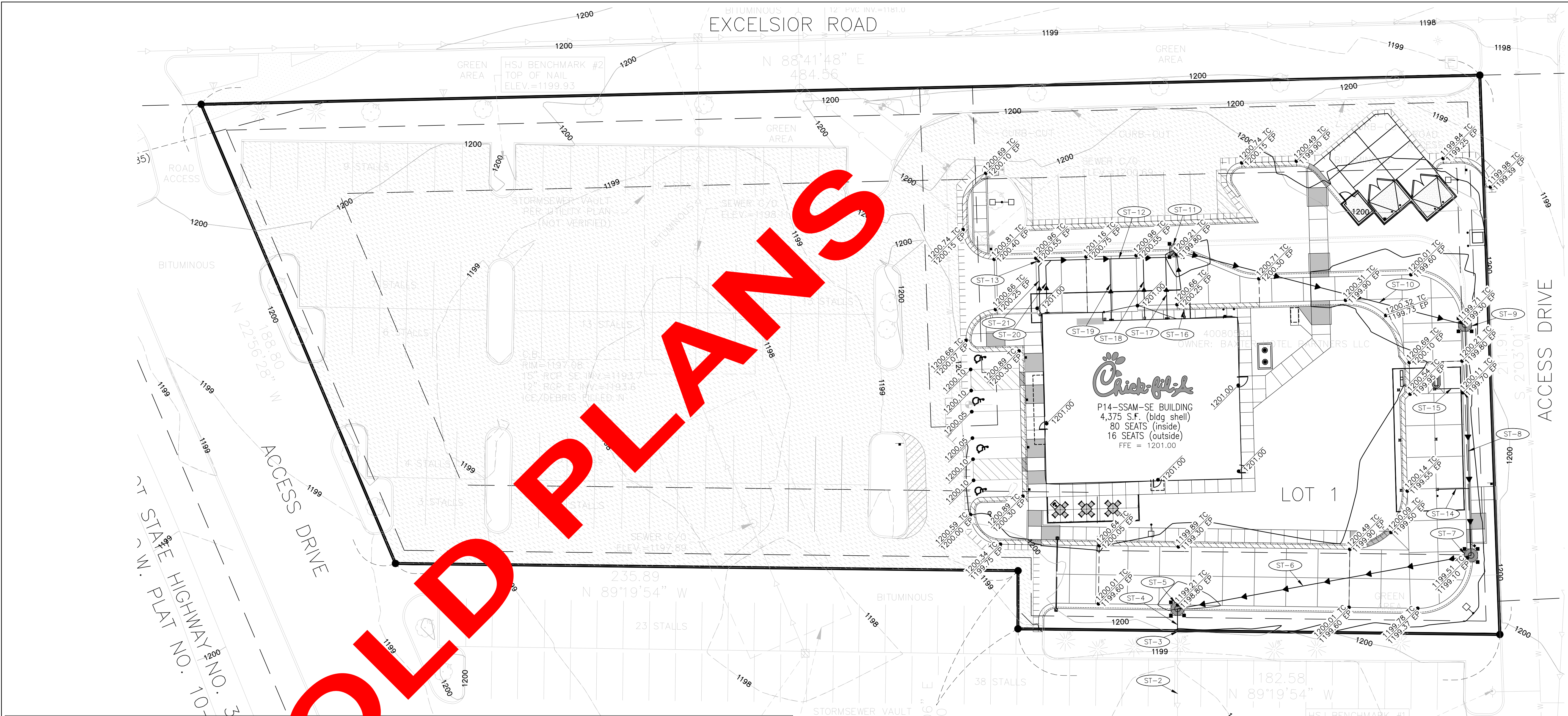
FSU# 06086

REVISION SCHEDULE
NO. DATE DESCRIPTION

PRELIMINARY

ENGINEER'S PROJECT # 2403792
PRINTED FOR PRELIMINARY
DATE 03/18/2025
DRAWN BY: MRJ
CHECKED BY: JFV

Information contained on this drawing and in all digital files produced for above named project may not be reproduced in any manner without express written or verbal consent from authorized project representatives.
SHEET GRADING PLAN
SHEET NUMBER C-300



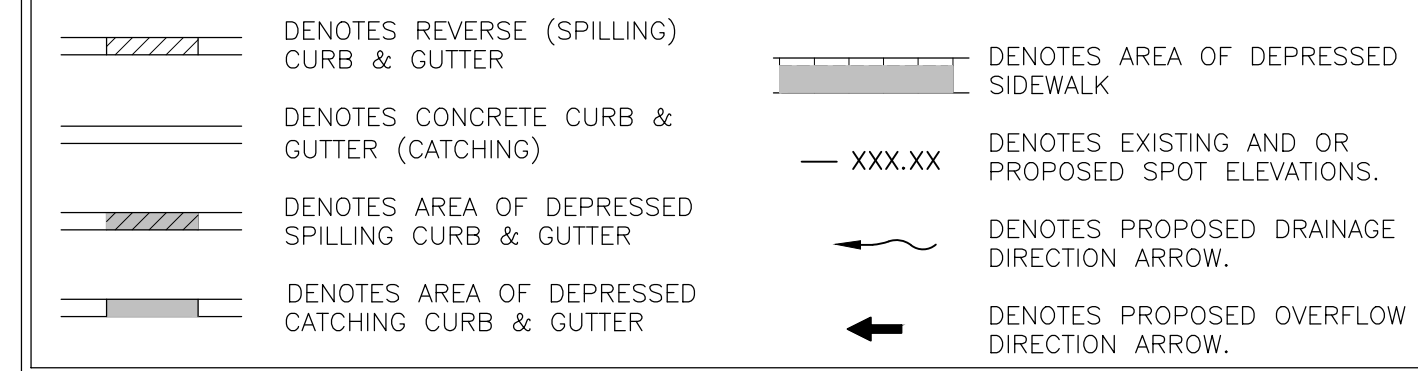
GRADING & DRAINAGE NOTES

- CONTRACTOR IS RESPONSIBLE FOR COORDINATION OF SITE PLAN DOCUMENTS AND ARCHITECTURAL DESIGN FOR EXACT BUILDING UTILITY CONNECTION LOCAL CODES AND REQUIREMENTS/DETAILS, DOOR ACCESS, AND EXTERIOR GRADING. THE UTILITY SIZES ARE TO BE DETERMINED BY THE ARCHITECT. THE CONTRACTOR SHALL COORDINATE INSTALLATION OF UTILITIES/SERVICES WITH THE INDIVIDUAL COMPANIES, TO AVOID CONFLICTS AND ENSURE PROPER DEPTHS ARE ACHIEVED. THE JURISDICTION UTILITY REQUIREMENTS SHALL ALSO BE MET, AS WELL AS COORDINATING THE UTILITY TIE-INS/CONNECTIONS PRIOR TO CONNECTING TO THE EXISTING UTILITY/SERVICE. WHERE CONFLICTS EXIST WITH THESE SITE PLANS, ENGINEER IS TO BE NOTIFIED PRIOR TO CONSTRUCTION TO RESOLVE SAME.
- SITE GRADING SHALL BE PERFORMED IN ACCORDANCE WITH THESE PLANS AND SPECIFICATIONS AND THE RECOMMENDATIONS SET FORTH IN THE GEOTECHNICAL REPORT. THE CONTRACTOR SHALL BE RESPONSIBLE FOR REMOVING AND REPLACING WITH SUITABLE MATERIALS AS SPECIFIED IN THE GEOTECHNICAL REPORT. ALL EXCAVATED OR FILLED AREAS SHALL BE COMPACTED AS OUTLINED IN THE GEOTECHNICAL REPORT. MOISTURE CONTENT AT TIME OF PLACEMENT SHALL BE SUBMITTED IN COMPACTION REPORT PREPARED BY A QUALIFIED GEOTECHNICAL ENGINEER, REGISTERED WITH THE STATE WHERE THE WORK IS PERFORMED, VERIFYING THAT ALL FILLED AREAS AND SUBGRADE AREAS WITHIN THE BUILDING PAD AREA AND AREAS TO BE PAVED HAVE BEEN COMPACTED IN ACCORDANCE WITH THESE PLANS AND SPECIFICATIONS AND THE RECOMMENDATIONS SET FORTH IN THE GEOTECHNICAL REPORT. SUBBASE MATERIAL FOR SIDEWALKS, CURB, OR ASPHALT SHALL BE FREE OF ORGANICS AND OTHER UNSUITABLE MATERIALS. SHOULD SUBBASE BE DEEMED UNSUITABLE BY OWNER OR OWNER'S REPRESENTATIVE, SUBBASE IS TO BE REMOVED AND FILLED WITH APPROVED FILL MATERIAL COMPACTED AS DIRECTED BY THE GEOTECHNICAL REPORT.
- ALL FILL, COMPACTION, AND BACKFILL MATERIALS REQUIRED FOR UTILITY INSTALLATION SHALL BE AS PER THE RECOMMENDATIONS PROVIDED IN THE GEOTECHNICAL REPORT AND SHALL BE COORDINATED WITH THE APPLICABLE UTILITY COMPANY SPECIFICATIONS.
- THE CONTRACTOR SHALL COMPLY TO THE FULLEST EXTENT WITH THE LATEST OSHA STANDARDS AND REGULATIONS, OR ANY OTHER AGENCY HAVING JURISDICTION FOR EXCAVATION AND TRENCHING PROCEDURES. THE CONTRACTOR IS RESPONSIBLE FOR DETERMINING THE "MEANS AND METHODS" REQUIRED TO MEET THE INTENT AND PERFORMANCE CRITERIA OF OSHA, AS WELL AS ANY OTHER ENTITY THAT HAS JURISDICTION FOR EXCAVATION AND/OR TRENCHING PROCEDURES.
- PAVEMENT SHALL BE SAW CUT IN STRAIGHT LINES TO THE FULL DEPTH OF THE EXISTING PAVEMENT. ALL DEBRIS FROM REMOVAL OPERATIONS SHALL BE REMOVED FROM THE SITE AT THE TIME OF EXCAVATION. STOCKPILING OF DEBRIS WILL NOT BE PERMITTED.
- THE TOPS OF EXISTING MANHOLES, INLET STRUCTURES, AND SANITARY CLEANOUT TOPS SHALL BE ADJUSTED, IF REQUIRED, TO MATCH PROPOSED GRADES IN ACCORDANCE WITH ALL APPLICABLE STANDARDS.
- THE CONTRACTOR IS RESPONSIBLE FOR VERIFICATION OF EXISTING TOPOGRAPHIC INFORMATION AND UTILITY INVERT ELEVATIONS PRIOR TO COMMENCEMENT OF ANY CONSTRUCTION. CONTRACTOR TO ENSURE 0.75% MINIMUM SLOPE ALONG ALL ISLANDS, GUTTERS, AND CURBS; 1.0% ON ALL CONCRETE SURFACES; AND 1.5% MINIMUM ON ASPHALT, TO PREVENT PONDING. ANY DISCREPANCIES THAT MAY AFFECT THE PUBLIC SAFETY OR PROJECT COST MUST BE IDENTIFIED TO THE ENGINEER IN WRITING IMMEDIATELY. PROCEEDING WITH CONSTRUCTION WITHOUT NOTIFICATION IS DONE SO AT THE CONTRACTOR'S OWN RISK.
- PROPOSED TOP OF CURB ELEVATIONS ARE GENERALLY 6" ABOVE EXISTING LOCAL ASPHALT GRADE UNLESS OTHERWISE NOTED. FIELD ADJUST TO CREATE A MINIMUM OF 0.75% GUTTER GRADE ALONG CURB FACE. ENGINEER TO APPROVE FINAL CURBING CUT SHEETS PRIOR TO INSTALLATION.
- IN CASE OF DISCREPANCIES BETWEEN PLANS OR RELATIVE TO OTHER PLANS, THE SITE PLAN WILL TAKE PRECEDENCE. IMMEDIATELY NOTIFY THE ENGINEER IN WRITING OF ANY CONFLICTS.
- CONTRACTOR SHALL BE REQUIRED TO SECURE ALL NECESSARY PERMITS AND APPROVALS FOR ALL OFF-SITE MATERIAL SOURCES AND DISPOSAL FACILITIES. CONTRACTOR SHALL SUPPLY A COPY OF APPROVALS TO ENGINEER AND OWNER PRIOR TO INITIATING WORK.
- SITE GRADING SHALL NOT PROCEED UNTIL EROSION CONTROL MEASURES HAVE BEEN INSTALLED.
- SEE EROSION CONTROL PLAN FOR EROSION CONTROL MEASURES AND NOTES.
- ALL EXISTING STRUCTURES, UNLESS OTHERWISE NOTED TO REMAIN, FENCING, TREES, & ETC., WITHIN CONSTRUCTION AREA SHALL BE REMOVED & DISPOSED OF OFF SITE. NO ON SITE BURNING WILL BE ALLOWED.
- ALL DRAINAGE STRUCTURES SHALL BE PRE-CAST.
- ALL DRAINAGE STRUCTURES AND STORM SEWER PIPES SHALL MEET HEAVY DUTY TRAFFIC (H20) LOADING AND BE INSTALLED ACCORDINGLY.
- GENERAL CONTRACTOR SHALL NOTIFY ALL UTILITY COMPANIES HAVING UNDERGROUND UTILITIES ON SITE OR IN RIGHT-OF-WAY PRIOR TO EXCAVATION. CONTRACTOR SHALL CONTACT UTILITY LOCATING COMPANY AND LOCATE ALL UTILITIES PRIOR TO GRADING START.
- NO PART OF THE PROPOSED PROJECT IS LOCATED WITHIN A FLOOD HAZARD AREA.
- SPOT ELEVATIONS SHOWN ARE @ EDGE OF PAVEMENT UNLESS OTHERWISE NOTED ON PLAN.
- ALL CONCRETE CURB & GUTTER SHALL BE TYPE B-6.18 CURB UNLESS OTHERWISE NOTED ON THE PLANS.
- ALL STORM SEWER JOINTS SHALL HAVE O-RING GASKETS.
- MATCH EXISTING GRADES AT PROPERTY LINES AND/OR CONSTRUCTION LIMITS.
- BACKFILL TO THE TOP OF CURBS.
- SITE SHALL BE GRADED TO PROVIDE POSITIVE DRAINAGE AWAY FROM BUILDINGS
- ALL SIDEWALK CROSS SLOPES SHALL BE A MAXIMUM OF 1.5%.
- DESIGNATED HANDICAP PARKING AREAS SHALL BE GRADED TO A MAXIMUM OF 1.5%
- SLOPES IN PAVEMENT SHALL BE UNIFORM TO AVOID PONDING OF PAVEMENT.
- THE CONTRACTOR SHALL CONFINE HIS GRADING OPERATIONS TO WITHIN CONSTRUCTION LIMITS AND EASEMENTS SHOWN ON THE PLANS. ANY DAMAGE TO PROPERTIES OUTSIDE THE SITE BOUNDARY SHALL BE AT THE SOLE RESPONSIBILITY OF THE CONTRACTOR.
- THE CONTRACTOR SHALL APPLY NECESSARY MOISTURE CONTROL TO THE CONSTRUCTION AREA AND HAUL ROADS TO PREVENT THE SPREAD OF DUST.
- ALL FIELD TILES ENCOUNTERED SHALL BE REPLACED AND/OR CONNECTED TO THE STORM SEWER SYSTEM AND LOCATED AND IDENTIFIED ON THE RECORD PLANS BY THE CONTRACTOR.
- ALL STORM DRAINAGE CONSTRUCTION SHALL BE PERFORMED IN ACCORDANCE WITH THE MOST CURRENT CITY OF BAXTER STANDARDS AND SPECIFICATIONS.

GENERAL NOTES:

- ACCESSIBLE PARKING, RAMPS, AND SIGNAGE SHALL COMPLY WITH ADA ACCESSIBILITY GUIDELINES FOR BUILDINGS AND FACILITIES.
- ALL WORK SHALL BE IN ACCORDANCE WITH OSHA CODES AND STANDARDS, NOTHING INDICATED ON THE DRAWINGS SHALL RELIEVE THE CONTRACTOR FROM COMPLYING WITH ANY APPROPRIATE SAFETY REGULATIONS.
- 48 HOURS PRIOR TO CONSTRUCTION WITHIN CITY OR STATE ROW OR ANY CONNECTION TO PUBLIC SEWERS, CONTRACTOR SHALL NOTIFY THE APPROPRIATE CITY ENGINEERING DIVISIONS.
- CONTRACTOR TO VERIFY BUILDING DIMENSIONS WITH ARCHITECTURAL PLANS. PLACE 3/4" INCH EXPANSION JOINT BETWEEN ALL P.C.C. PAVEMENT/ SIDEWALKS AND BUILDING. PLACE 1/2" INCH EXPANSION JOINT BETWEEN SIDEWALKS AND P.C.C. PAVEMENT. CUT/TRIM EXPANSION JOINTS TO BE FLUSH WITH SURFACE.
- ALL PROPERTY PINS SHALL BE PROTECTED FROM GRADING OR OTHER OPERATIONS. ANY PINS DISTURBED SHALL BE RESET AT THE CONTRACTOR'S EXPENSE.
- DO NOT STORE CONSTRUCTION MATERIALS AND EQUIPMENT IN THE RIGHT-OF-WAY.
- THE CONTRACTOR SHALL NOT DISTURB DESIRABLE GRASS AREAS AND DESIRABLE TREES OUTSIDE THE CONSTRUCTION LIMITS. THE CONTRACTOR SHALL NOT BE PERMITTED TO PARK OR SERVICE VEHICLES AND EQUIPMENT OR USE THESE AREAS FOR STORAGE OR MATERIALS. STORAGE, PARKING AND SERVICE AREAS WILL BE SUBJECT TO THE APPROVAL OF THE OWNER.
- THE CONTRACTOR IS RESPONSIBLE FOR REPLACING ANY AREAS OF PAVEMENT OR SIDEWALK NOT TO BE REMOVED THAT IS DAMAGED DUE TO OPERATING EQUIPMENT ON THE PAVEMENT OR SIDEWALK.
- THE CONTRACTOR MAY BE REQUIRED TO PLACE TEMPORARY WARNING DEVICES AND SAFETY FENCE AT CERTAIN LOCATIONS WHERE REPLACEMENT FEATURES ARE NOT INSTALLED THE SAME DAY, AS DIRECTED BY THE ENGINEER OR THE CITY.
- ALL CONSTRUCTION WITHIN PUBLIC ROW/EASEMENTS AND/OR ANY CONNECTION TO PUBLIC SEWERS AND STREETS, SHALL COMPLY WITH CITY CONSTRUCTION SPECIFICATIONS AND DESIGN STANDARDS
- EXCAVATION SHALL BE IN ACCORDANCE WITH THE GEOTECHNICAL REPORT PREPARED FOR THIS PROJECT.
- CONTRACTOR TO GRADE 4" BELOW THE BACK OF CURB TO ALLOW FOR THE PLACEMENT OF TOPSOIL. A MINIMUM OF 4" OF TOPSOIL SHALL BE PLACED IN ALL PLANTING BEDS AND ALL GRASSED AREAS. GRADED AREAS TO BE HELD DOWN TO THE APPROPRIATE ELEVATION TO ACCOUNT FOR TOPSOIL. SEE SHEET L-101 FOR DETAILS.

HATCH LEGEND



STORM TAGS

REFER TO SHEET PS-101 FOR TAG INFO

NOTE:

ALL STORM STRUCTURES WITHIN PAVED AREAS REQUIRE WEEP HOLES. SEE DETAIL 10 ON SHEET C-403 FOR WEEP HOLE DETAILS.

TRAFFIC CONTROL NOTES:

- ALL APPLICABLE CITY/STATE PERMITS, INCLUDING BUT NOT LIMITED TO CLOSURE PERMITS, SHALL BE OBTAINED PRIOR TO ANY CONSTRUCTION WITHIN CITY/STATE ROW OR LANE CLOSURES.
- ALL TRAFFIC CONTROL SHALL BE IN ACCORDANCE WITH THE LATEST EDITION OF THE MANUAL ON UNIFORM TRAFFIC CONTROL DEVICES.
- SIDEWALK CLOSED SIGNS REQUIRED FOR ALL SIDEWALK CLOSURES.
- THE CONTRACTOR IS CAUTIONED NEITHER TO OBSTRUCT NOR REMOVE ANY EXISTING PAVEMENT, NOR TO DISTURB THE EXISTING TRAFFIC PATTERNS MORE THAN IS NECESSARY FOR THE PROPER EXECUTION OF THE WORK.



BAR IS ONE INCH ON OFFICIAL DRAWINGS
IF NOT ONE INCH, ADJUST SCALE ACCORDINGLY

PRELIMINARY
NOT FOR CONSTRUCTION

UTILITY NOTES

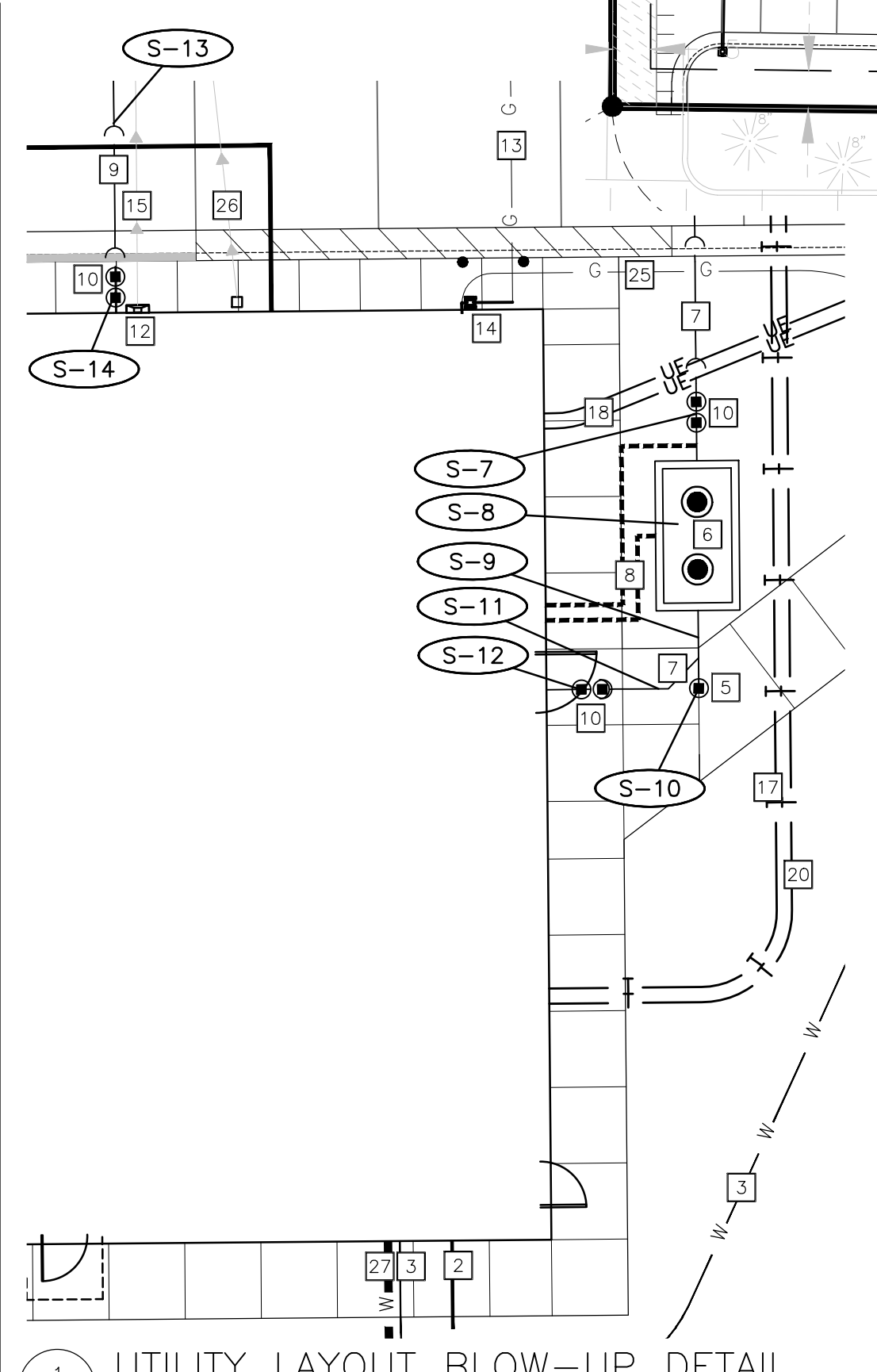
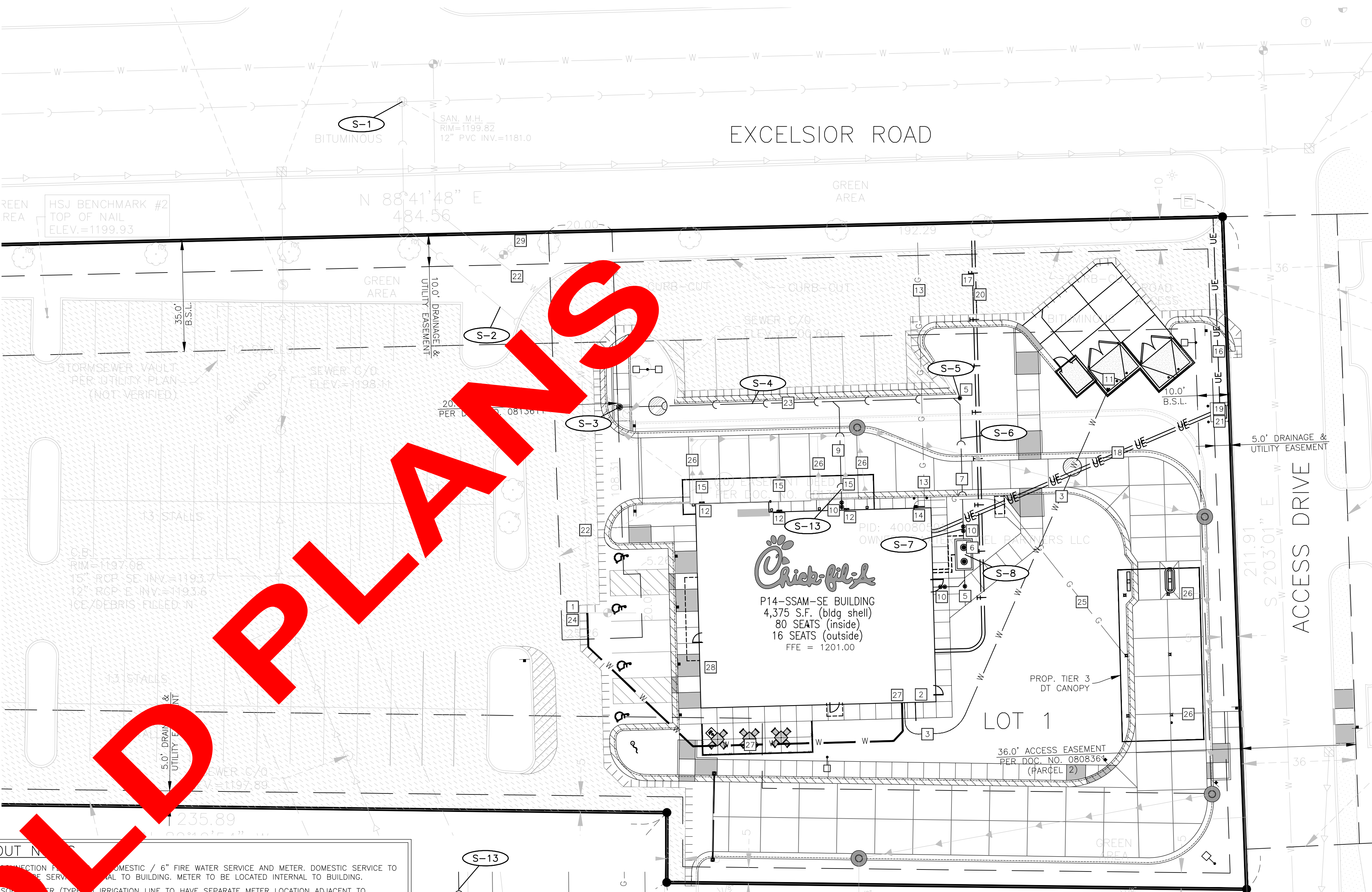
- REFER TO MECHANICAL, ELECTRICAL, AND PLUMBING PLANS FOR DUTY SERVICE SIZES AND EXACT LOCATIONS. CONTRACTOR TO CONFIRM SIZES OF ALL SERVICES PRIOR TO INSTALLATION. REFER TO ELECTRICAL PLANS FOR ELECTRIC AND TELEPHONE SERVICE CONSTRUCTION DETAILS. REFER TO MECHANICAL PLANS FOR GAS SERVICE CONSTRUCTION DETAILS.
- FIELD VERIFY ELEVATIONS AND LOCATIONS OF ALL CONNECTIONS TO EXISTING UTILITIES PRIOR TO COMMENCING CONSTRUCTION.
- PROVIDE TEMPORARY SUPPORT FOR EXISTING UTILITY LINES THAT ARE ENCOUNTERED DURING CONSTRUCTION UNTIL BACKFILLING IS COMPLETE.
- MAINTAIN A MINIMUM OF 7.5' COVER OVER ALL WATER MAINS.
- MAINTAIN A MINIMUM OF 4.0' COVER OVER ALL SANITARY SEWER.
- ADJUST ALL MANHOLES AND FRAMES TO FINISHED GRADES.
- ALL SANITARY SEWER AND WATER SERVICES SHALL BE CONSTRUCTED IN ACCORDANCE WITH THE REQUIREMENTS OF THE CITY OF BAXTER AND STATE OF MINNESOTA PLUMBING CODE.
- 12" MINIMUM VERTICAL CLEARANCE BETWEEN STORM SEWER AND SANITARY SEWER PIPES. 18" MINIMUM VERTICAL CLEARANCE BETWEEN SANITARY/STORM SEWER AND WATER MAIN.
- MAINTAIN A MINIMUM OF 10' HORIZONTAL SEPARATION BETWEEN SANITARY SEWER LINES AND PUBLIC WATER MAINS.
- WHERE PUBLIC UTILITY FIXTURES ARE SHOWN AS EXISTING ON THE PLANS OR ENCOUNTERED WITHIN THE CONSTRUCTION AREA, IT SHALL BE THE RESPONSIBILITY OF THE CONTRACTOR TO NOTIFY THE OWNERS OF THOSE UTILITIES PRIOR TO THE BEGINNING OF ANY CONSTRUCTION. THE CONTRACTOR SHALL AFFORD ACCESS TO THESE FACILITIES FOR NECESSARY MODIFICATION OF SERVICES, UNDERGROUND FACILITIES, STRUCTURES, AND UTILITIES HAVE BEEN PLOTTED FROM AVAILABLE SURVEYS AND RECORDS AND THEREFORE, THEIR LOCATIONS MUST BE CONSIDERED APPROXIMATE ONLY. IT IS POSSIBLE THERE MAY BE OTHERS, THE EXISTENCE OF WHICH IS PRESENTLY NOT KNOWN OR SHOWN. IT IS THE CONTRACTOR'S RESPONSIBILITY TO DETERMINE THEIR EXISTENCE AND EXACT LOCATIONS AND TO AVOID DAMAGE THERETO. NO CLAIMS FOR ADDITIONAL COMPENSATION WILL BE ALLOWED TO THE CONTRACTOR FOR ANY INTERFERENCE OR DELAY CAUSED BY SUCH WORK. THE CONTRACTOR IS REQUIRED TO UTILIZE THE UTILITY CALL Gopher State One Call at 1-800-252-1166 AT LEAST 72 HOURS PRIOR TO EXCAVATING ANYWHERE ON THE PROJECT.
- LOCATION OF SITE UTILITIES SHALL BE VERIFIED WITH PROPER UTILITY COMPANY PROVIDING SERVICE.
- ALL WATER AND SANITARY LEADS TO BUILDING SHALL END 5' OUTSIDE THE BUILDING LIMITS AS SHOWN ON PLAN AND SHALL BE PROVIDED WITH A TEMPORARY PLUG AT END.
- SEE SITE SPECIFICATIONS "UNDERGROUND UTILITIES" FOR BACKFILLING AND COMPACTION REQUIREMENTS.
- GENERAL CONTRACTOR WILL BE RESPONSIBLE FOR ALL TAP AND TIE IN FEES REQUIRED, AS WELL AS COST OF UNDERGROUND SERVICE CONNECTIONS TO THE BUILDING.
- ELECTRICAL SERVICE TO PAD MOUNTED TRANSFORMER SHALL BE RUN UNDERGROUND, FROM ROAD RIGHT-OF-WAY TO TRANSFORMER LOCATION. ASSOCIATED COST BY GENERAL CONTRACTOR.
- ALL EXISTING UTILITIES TO BE FIELD VERIFIED PRIOR TO CONSTRUCTION.
- FOR EXACT LIGHT POLE LOCATIONS SEE PHOTOMETRICS PLAN.
- MATERIAL PERMITTED FOR USE AS SANITARY SEWER PIPES SHALL BE PVC SCHEDULE 40 FOR 4" & 6".
- CENTERPOINT ENERGY WILL FURNISH AND INSTALL THE GAS MAINS AND GAS SERVICE UP TO AND INCLUDING THE METER. CONTRACTOR TO PROVIDE (1) 4" SCHEDULE 40 PVC CONDUIT UNDER PAVED AREAS FOR NEW SERVICE LINE.
- CONTRACTOR TO FURNISH AND INSTALL (1) 4" SCHEDULE 40 PVC CONDUITS FOR TELEPHONE SERVICE FROM COMCAST PEDESTAL TO BUILDING. COMCAST TO SUPPLY, PROVIDE AND INSTALL PRIMARY TELEPHONE SERVICE. CONDUITS TO BE INSTALLED A MINIMUM 24" BELOW FINISHED GRADE.
- CONTRACTOR TO FURNISH AND INSTALL (2) 4" SCHEDULE 40 PVC CONDUITS WITH PULL WIRE FOR PRIMARY ELECTRIC SERVICE, BRAINER PUBLIC UTILITIES TO PROVIDE AND INSTALL PRIMARY ELECTRIC SERVICE. CONTRACTOR TO FURNISH AND INSTALL (4) 4" SCHEDULE 40 PVC CONDUITS WITH PULL WIRE FOR SECONDARY ELECTRIC SERVICE. CONDUITS SHALL HAVE A MINIMUM OF 36" OF COVER. CONTRACTOR TO PROVIDE AND INSTALL TRANSFORMER PAD AND SECONDARY SERVICE IN ACCORDANCE WITH BRAINER PUBLIC UTILITIES SPECIFICATIONS AND REQUIREMENTS. TRANSFORMER PAD SHALL BE INSTALLED TO FINAL GRADE AND LEVELLED.
- CONTRACTOR TO FURNISH AND INSTALL (1) 3" SCHEDULE 40 PVC CONDUIT WITH PULL STRING FOR ISP SERVICE FROM COMCAST MAIN TO BUILDING. COMCAST TO SUPPLY, PROVIDE AND INSTALL ISP SERVICE. CONDUIT TO BE INSTALLED MINIMUM 24" BELOW FINISHED GRADE.
- ALL SEWER CONSTRUCTION SHALL MEET THE REQUIREMENTS OF THE CITY OF BAXTER.
- ALL CONNECTIONS TO PUBLIC SANITARY SEWERS SHALL BE PER CITY OF BAXTER STANDARD SPECIFICATIONS.
- THE CFA FIRE WATER SERVICE PIPE SHALL BE PVC C900 PIPE.
- ALL FIELD TILES ENCOUNTERED SHALL BE REPLACED AND/OR CONNECTED TO THE STORM SEWER SYSTEM AND LOCATED AND IDENTIFIED ON THE RECORD PLANS BY THE CONTRACTOR.
- ROOF DRAINS, FOUNDATION DRAINS, AND OTHER CLEAN WATER CONNECTIONS TO THE SANITARY SEWER SYSTEM ARE PROHIBITED.
- PROVIDE UNDERDRAINS FROM SEEPS OR SPRINGS ENCOUNTERED. EXTEND TO STORM SEWER SYSTEM OR DAYLIGHT AT THE BOTTOM OF THE FILL SLOPE.
- ALL PROPOSED PIPE CONNECTIONS TO EXISTING OR PROPOSED MANHOLES SHALL CONFORM TO ASTM-C923.
- TRACER WIRE IS REQUIRED PER STATE AND CITY STANDARDS.
- IF EXISTING SANITARY/WATER LATERALS ARE NOT TO BE USED/REUSED, THEY SHALL BE ABANDONED AT MAIN PER CITY STANDARDS.

ONSITE WATERLINE NOTES:

- THRUST BLOCKS SHALL BE PROVIDED AT ALL BENDS, TEES, AND FIRE HYDRANTS.
- ALL FIRE HYDRANTS SHALL BE PROVIDED WITH AN APPROVED AUXILIARY GATE VALVE.
- ALL WATER MAINS SHALL BE HYDROSTATICALLY TESTED AND DISINFECTED BEFORE ACCEPTANCE. SEE SITE WORK SPECIFICATIONS.
- ALL TRENCHING, PIPE LAYING, AND BACKFILLING SHALL BE IN ACCORDANCE WITH FEDERAL OSHA REGULATIONS.
- GENERAL CONTRACTOR SHALL HAVE APPROVAL OF ALL GOVERNING AGENCIES HAVING JURISDICTION OVER THIS SYSTEM PRIOR TO INSTALLATION.
- ALL WATER MAIN SHALL BE INSTALLED WITH TRACER WIRE IN ACCORDANCE WITH CITY STANDARDS.
- PROPOSED BUILDING TO HAVE FIRE SPRINKLER SYSTEM.

LAYOUT NOTES

- PAY ATTENTION TO ALL DOMESTIC / 6" FIRE WATER SERVICE AND METER. DOMESTIC SERVICE TO THE SANITARY SEWER SYSTEM SHALL BE LOCATED INTERNAL TO BUILDING.
- 3/4" CW TO WATER METER INTERNAL TO BUILDING. METER TO BE LOCATED ADJACENT TO DOMESTIC WATER SERVICE. IRRIGATION LINE TO HAVE SEPARATE METER LOCATION ADJACENT TO DOMESTIC WATER METER INTERNAL TO THE BUILDING. MAINTAIN MIN. 7.5' COVER.
- 3/4" CW TO WATER METER INTERNAL TO BUILDING. METER TO BE LOCATED ADJACENT TO DOMESTIC WATER SERVICE. IRRIGATION LINE TO HAVE SEPARATE METER LOCATION ADJACENT TO DOMESTIC WATER METER INTERNAL TO THE BUILDING. MAINTAIN MIN. 7.5' COVER.
- CONNECTIONS TO EXIST. SANITARY SEWER MAIN VIA CUT IN WYE. CONTRACTOR TO VERIFY INVERT AT MAIN PRIOR TO TAPPING STRUCTURES. SEE SANITARY TAGS FOR INFO.
- 4" OR LARGER CLEAN OUT (SEE DETAIL). CLEANOUT SHALL BE FLUSH W/ PAVEMENT & INSTALLED UNDER A METAL BOX COVER SIMILAR TO A METER PIT COVER WITH A TRAFFIC BEARING LID.
- MIN. 1,500 GAL. CAPACITY GREASE TRAP. PLUMBING CONTRACTOR TO COORDINATE WITH BUILDING CONTRACTOR. TOP OF MANHOLE TO BE 0.2' ABOVE FINISH GRADE AND MATCH SIDEWALK GRADES WHERE REQUIRED. VERIFY GREASE TRAP MEETS CITY/COUNTY SPECIFICATIONS PRIOR TO INSTALLATION. REFER TO PLUMBING PLAN, SHEET P-101.
- 4" KITCHEN WASTE LINE (SEE SANITARY TAGS FOR INFO)
- 3" VENT LINE. CONNECT TO GREASE INTERCEPTOR. (SEE SHEET P-101 FOR LOCATION)
- 4" RESTROOM WASTE LINE (SEE SANITARY TAGS FOR INFO)
- 4" OR 6" TWO-WAY CLEAN OUT (REFER TO PLUMBING PLANS)(SEE DETAIL 37/C-403)
- DUMPSTER POST HYDRANT. REFER TO THE FIXTURE CONNECTION SCHEDULE (P-303) DEPICTED ON THE PROJECT PLUMBING PLANS.
- DOWNSPOUT FOR ROOF DRAINAGE (REFER TO ARCHITECTURAL PLANS)
- PROPOSED GAS SERVICE (SEE NOTE 19)
- COORDINATE GAS METER INSTALLATION WITH GAS COMPANY.
- 8" PVC SDR 26 ROOF DRAIN PIPE SYSTEM (CONNECT TO SITE STORM DRAIN)
- UNDERGROUND PRIMARY ELECTRIC SERVICE. (SEE NOTE 21)
- UNDERGROUND PRIMARY TELEPHONE SERVICE. (SEE NOTE 20)
- UNDERGROUND SECONDARY ELECTRIC SERVICE TO BUILDING. (SEE NOTE 21)
- PROPOSED PAD MOUNTED TRANSFORMER PER ELECTRIC COMPANY STANDARDS. SEE SERVICE UTILITY NOTES, THIS SHEET.
- UNDERGROUND ISP SERVICE (SEE NOTE 22)
- INSTALL TRANSFORMER PAD (SEE NOTE 21)
- APPROX. LOCATION OF EXISTING 6" PVC WATER SERVICE. CONTRACTOR TO FIELD VERIFY LOCATION, DEPTH, & MATERIAL.
- 6" PVC SDR 26 - SANITARY SERVICE PIPE
- CONNECT TO EXISTING 6" WATER SERVICE. CONTRACTOR TO VERIFY LOCATION, DEPTH, AND SIZE OF THE EXISTING WATER SERVICE PRIOR TO ORDERING MATERIALS. NOTIFY ENGINEER WITH ANY DISCREPANCIES.
- 1.5" GAS SERVICE LINE TO DRIVE-THRU CANOPY
- 6" PVC SDR 26 CANOPY DRAIN SYSTEM (CONNECT TO SITE STORM DRAIN)
- 6" PVC C900 PIPE (AWWA C900) - FIRE SERVICE. MAINTAIN 7.5' COVER.
- PROP. FDC LOCATION
- EXIST. FIRE HYDRANT
- CONNECT TO EXISTING 12" DI WATER MAIN VIA PRESSURE CONNECTION WITH VALVE & VALVE VAULT. CONTRACTOR TO VERIFY LOCATION, DEPTH, AND SIZE OF THE EXISTING WATER MAIN PRIOR TO ORDERING MATERIALS. NOTIFY ENGINEER WITH ANY DISCREPANCIES.



MISCELLANEOUS NOTES:

- ALL BUILDING UTILITY SERVICE LOCATIONS TO BE VERIFIED W/ ARCHITECTURAL PLANS PRIOR TO CONSTRUCTION.
- FOR EXACT LIGHT POLE LOCATIONS SEE PHOTOMETRICS PLAN.
- AT LEAST ONE WEEK PRIOR TO ANY CONSTRUCTION WITHIN PUBLIC R.O.W./ EASEMENTS AND/OR ANY CONNECTION TO PUBLIC SEWERS AND STREETS, THE CONTRACTOR SHALL CONTACT THE CITY AND/OR MNDOT TO OBTAIN APPLICABLE PERMITS.
- WORK WITHIN THE ROW SHALL BE DONE IN ACCORDANCE WITH THE CITY SPECIFICATIONS.
- ONLY THE CITY OF BAXTER PUBLIC WORKS DEPARTMENT MAY OPERATE EXISTING VALVES.
- THE CONTRACTOR MUST CONTACT THE CITY OF BAXTER PUBLIC WORKS DEPARTMENT TO SCHEDULE INSPECTIONS FOR ALL WORK WITHIN THE ROW.
- TRACER WIRE ON THE WATER SERVICE SHALL BE CONNECTED TO THE TRACER WIRE ON THE WATER MAIN AND INSTALLED IN ACCORDANCE WITH CITY SPECIFICATIONS.
- ANY WORK PERFORMED IN THE ROW SHALL BE PERFORMED BY A CITY "QUALIFIED" CONTRACTOR AND MONITORED BY PUBLIC WORKS.

LEGEND:

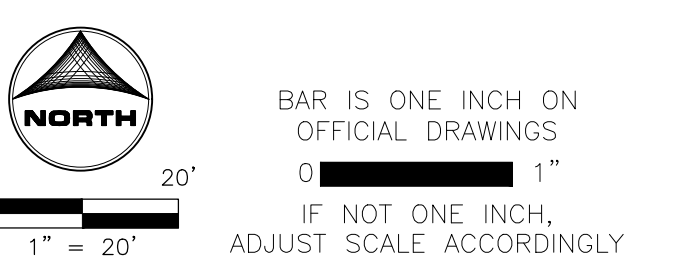
○ DENOTES MAINTAIN 18" VERTICAL SEPARATION PER MPCA'S REQUIREMENTS

S-# SANITARY SEWER TAGS

* REFER TO SHEET PS-101 FOR TAG INFO

A CONFLICT TAGS

* REFER TO SHEET PS-101 FOR TAG INFO



PRELIMINARY NOT FOR CONSTRUCTION

CSOC
 CALL: 1-800-252-1166
 WITH THE FOLLOWING:
 COUNTY CROW WING COUNTY - S08-T133N-R28W
 CITY-TOWNSHIP BAXTER
 PARCEL ID. NO. # 40080591
 1-800-252-1166
 WWW.GOPHERSTATEONECALL.ORG
 48 hours before you dig
 (Excluding Sat., Sun. & Holidays)



Chick-fil-A

Chick-fil-A
 5200 Buffington Road
 Atlanta, Georgia
 30349-2998

HRGreen.com
 HRGreen

CHICK-FIL-A
 BAXTER (MN) FSU
 7609 EXCELSIOR ROAD
 BAXTER, MN 56425

FSU# 06086

REVISION SCHEDULE
 NO. DATE DESCRIPTION

PRELIMINARY

ENGINEER'S PROJECT #	2403792
PRINTED FOR	PRELIMINARY
DATE	03/18/2025
DRAWN BY:	MRJ
CHECKED BY:	JFV

Information contained on this drawing and in all digital files produced for above named project may not be reproduced in any manner without express written or verbal consent from authorized project representatives.
 SHEET
PLUMBING SITE PLAN
 SHEET NUMBER
PS-100