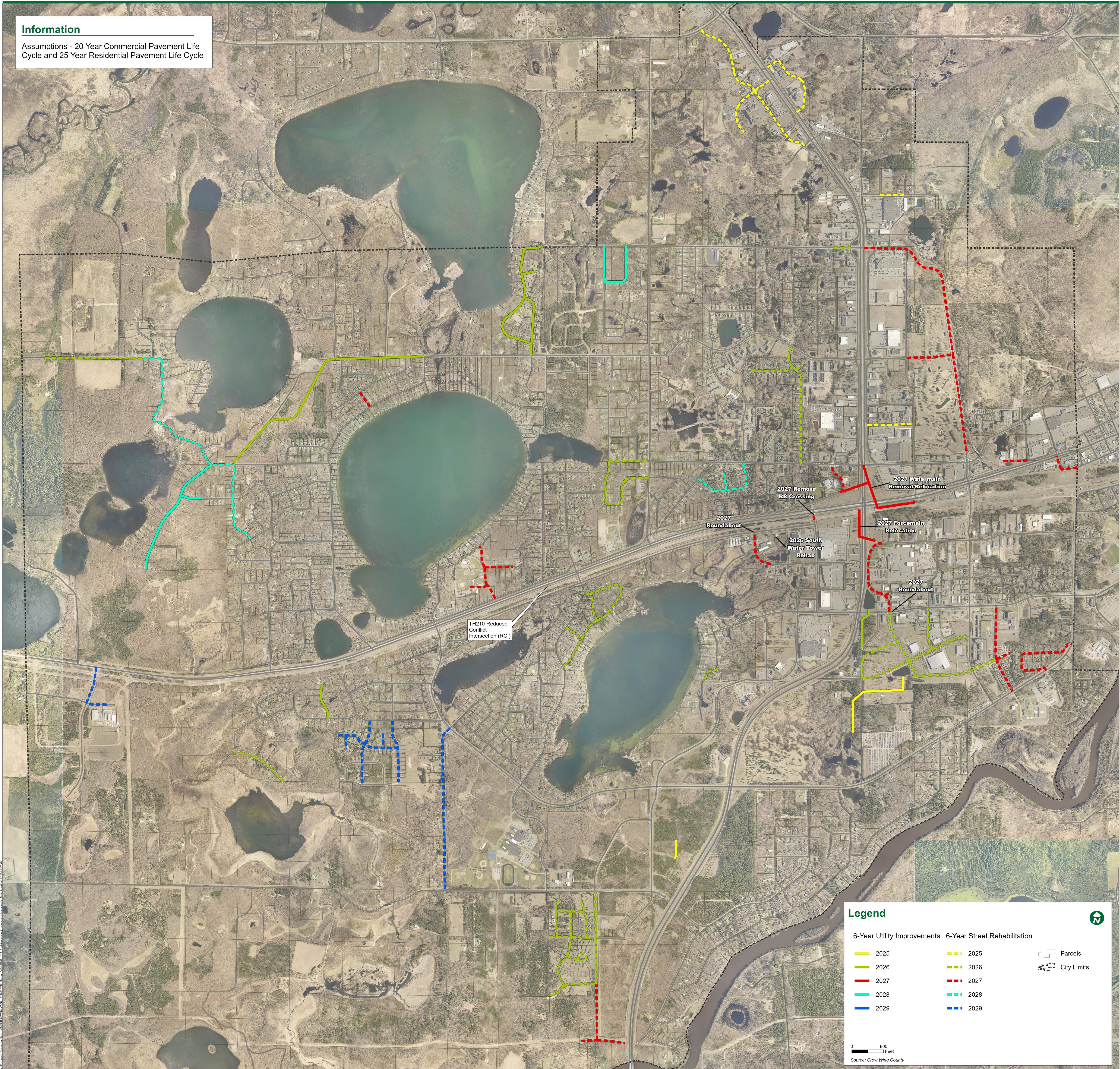


Information
Assumptions - 20 Year Commercial Pavement Life Cycle and 25 Year Residential Pavement Life Cycle



Legend

6-Year Utility Improvements		6-Year Street Rehabilitation		
—	2025	—	2025	Parcels
—	2026	—	2026	City Limits
—	2027	—	2027	
—	2028	—	2028	
—	2029	—	2029	

0 800 Feet
Source: Crow Wing County