



NEIGHBOR ON NORTH OF THE SITE ON INDEPENDENCE RD

EXTERIOR COLOR LEGEND

(TEXTURED FINISH AT CONCRETE WALL PANELS)

REFER TO FINISH SCHEDULE SHEET A1.03

EPT-1	SW 7063 - NEBULOUS WHITE
EPT-2	SW 7066 - GRAY MATTERS
EPT-3	TENANT BLUE TO MATCH PANTONE 2995C

SHEET NOTES

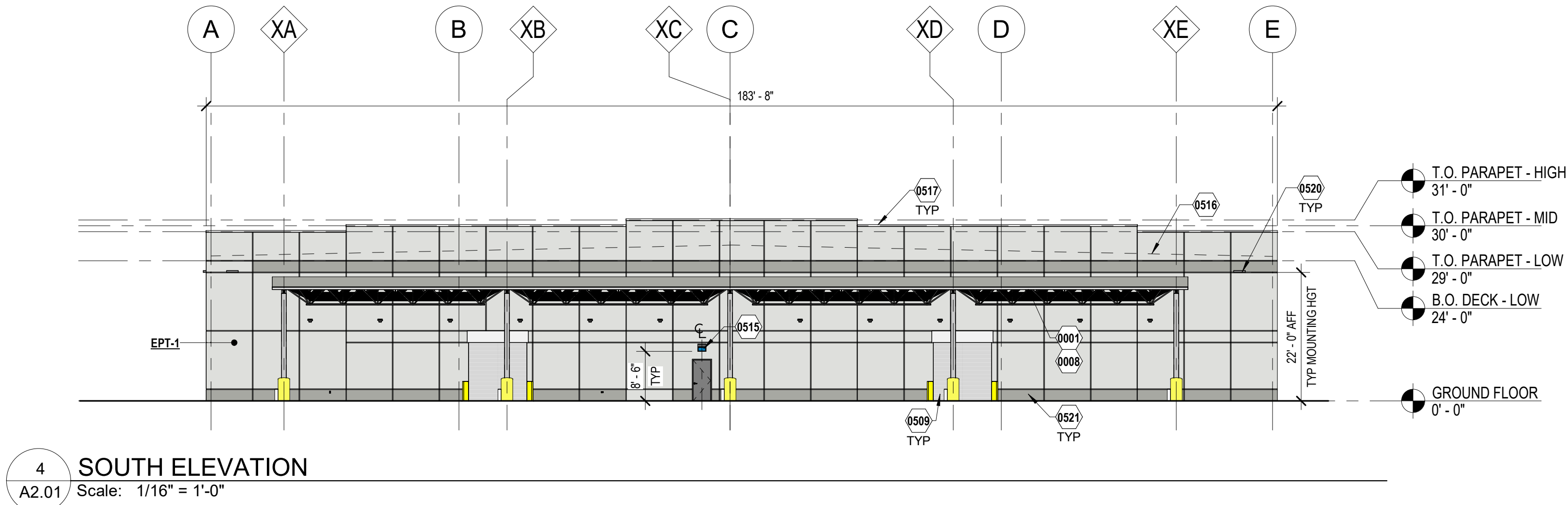
- A. PROVIDE FLASHING/MOISTURE PENETRATION PROTECTION AT ALL PENETRATIONS.
B. BRANDED BUILDING SIGNAGE IS NOT INCLUDED IN THE BUILDING PERMIT AND SHALL REQUIRE A SEPARATE PERMIT PRIOR TO INSTALLATION, U.N.O.
C. ALL EMERGENCY LIGHTING AT DOORS TO BE CENTERED ABOVE DOOR U.N.O., REFERENCE ELECTRICAL DRAWINGS.
D. REFER TO ELECTRICAL DRAWINGS FOR ALL LIGHTING LOCATIONS.
E. REFER TO STRUCTURAL AND MECHANICAL FOR ADDITIONAL INFORMATION RELATED TO BUILDING OPENINGS.
F. INSTALL JOINT SEALANT OVER EXPANSION JOINT FILLER AT ALL EXTERIOR WALL JOINTS AND AT ALL CUTS AND HOLES THROUGH WALLS. REFER TO SPECIFICATIONS.
G. REFER TO STRUCTURAL FOR LOCATION OF GROUTED AREAS AT STRUCTURAL CONNECTION.
H. PARAPET MEMBRANE FLASHING SHALL BE OF THE SAME MATERIAL AS SINGLE-PLY ROOFING MEMBRANE.
I. REFER TO BUILDING SECTIONS AND DETAILS FOR ADDITIONAL INFORMATION.
J. TIE ALL DOWNSPOUTS AT GRADE TO STORM DRAINS. REFER TO CANOPY PLAN, SECTIONS, AND CIVIL DRAWINGS.
K. PAINT ALL BOLLARDS SAFETY YELLOW.
L. REFER TO SPECIFICATIONS FOR SPECIFIC PAINT PRODUCTS REQUIRED.

CANOPY FINISH NOTES

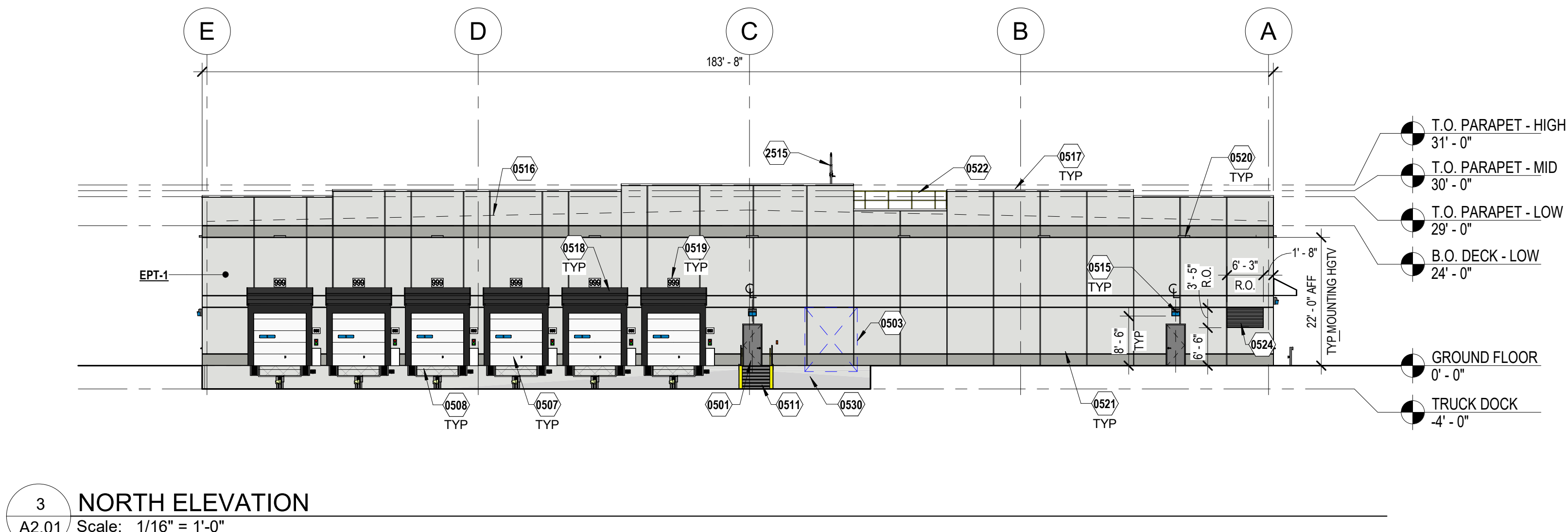
- A. STEEL AND METAL DECK ARE TO BE SHOP PRIMED WHITE. DO NOT GALVANIZE.
B. TWO COATS DRYFALL PAINT (SW 7007 CEILING BRIGHT WHITE) TO BE APPLIED IN THE FIELD OVER ALL EXPOSED SHOP-PRIMED STRUCTURE AND METAL DECK, ALONG WITH ANY EXPOSED CONDUITS, PIPING, ETC. (REF SPEC 09000).
C. COLUMNS AND CONCRETE SURROUND TO BE PAINTED SAFETY YELLOW. REFER TO SPEC 09000 FOR PRIMER & TOP COAT REQUIREMENTS.

KEYNOTES

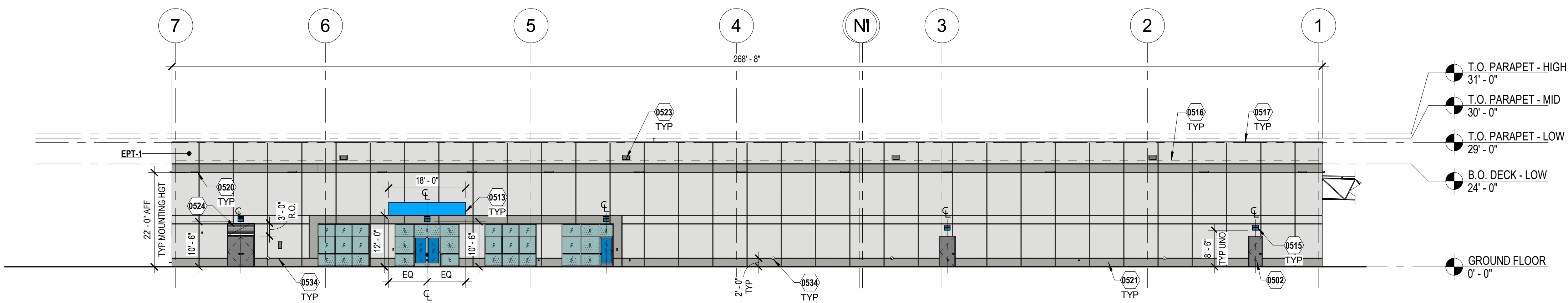
- 0001 LAUNCH PAD CANOPY (ABOVE). REFER TO SHEET A8.01.
0008 CONTINUOUS BRID NETTING ON UNDERSIDE OF CANOPY. DO NOT BLOCK LIGHTS WITH NETTING. PROVIDE ZIPPERS AT ALL MAINTENANCE ACCESS-POINTS. REFERENCE SPECS.
0501 TDR DOOR.
0502 DSP DOOR.
0503 KNOCKOUT PANEL. MATCH DOCK DOOR SIZE.
0507 SECTIONAL OVERHEAD TRUCK DOCK DOOR (INSULATED) WITH BUMPERS AND DOCK SEAL, PRE-PRIMED, PAINT PER LEGEND, TYP. REFER TO SHEET G1.10 FOR SIGNAGE.
0508 PROVIDE HYDRAULIC LEVELER PER TENANT DESIGN CRITERIA. REFER TO SPECIFICATIONS.
0509 HIGH-SPEED FABRIC DOOR (INTERIOR MOUNT) AND OVERHEAD COILING DOOR (EXTERIOR MOUNT) WITH PAINTED CLEAR ZONE ON GROUND. VERIFY REQUIRED CLEARANCES WITH DOOR MANUFACTURER. DOORS MAY REQUIRE LEFT HAND DRIVE MECHANISMS. REFER TO DOOR SCHEDULE FOR MORE INFORMATION.
0511 PRE-FAB METAL STAIR AT TRUCK COURT. GALVANIZED (NO PAINT).
0513 FABRIC AWNING OVERHEAD.
0515 EXTERIOR EGRESS LIGHT ABOVE EXTERIOR DOOR. REFER TO MEP.
0516 ROOF LINE BEYOND.
0517 PREFINISHED ALUMINUM COPING OVER CONTINUOUS WOOD BLOCKING.
0518 DOCK SHELTER. INSTALL PER MANUFACTURER'S INSTRUCTIONS. REFER TO SPECS.
0519 DOCK NUMBER SIGNAGE AT ALL DOCK DOORS, U.N.O.; CENTER SIGNAGE ON DOCK DOOR. REFER TO G1.10 FOR MORE INFORMATION.
0520 WALL MOUNTED LIGHT FIXTURE. REFER TO ELECTRICAL DRAWINGS. CENTER LIGHT FIXTURE HORIZONTALLY IN PANEL, U.N.O.
0521 PRECAST CONCRETE PANEL. PAINT PER EXTERIOR COLOR LEGEND. REFER TO PRECAST ENGINEER'S SHOP DRAWINGS FOR PANEL JOINT LOCATIONS.
0522 HOLD PRECAST CONCRETE PANEL 1'-0" ABOVE ROOF DECK FOR SNOW REMOVAL. PROVIDE PRE-FAB SAFETY RAIL AND CLAMP SYSTEM SIMILAR TO 'SAFETY RAIL COMPANY PARAPET WALL CLAMP-ON RAILING'. LOAD DESIGN FOR A 200LB POINT LOAD ANYWHERE ON THE HANDRAIL. LOAD ACTING IN ANY DIRECTION. TOP OF RAIL TO BE MIN 42" ABOVE THE ROOF SURFACE. MOUNT PER MANUFACTURER GUIDELINES. ENSURE NO GAP BETWEEN RAILINGS AND PANEL IS GREATER THAN 2". PROVIDE VERTICAL POST SPACING AS REQUIRED BY MANUFACTURER GUIDANCE.
0523 THROUGH-WALL OVERFLOW SCUPPER. PAINT TO MATCH EXTERIOR WALL BEYOND.
0524 ALUMINUM COVER, PRIMED, FIELD FINISHED TO MATCH PANEL OR SUBMIT MANUFACTURER'S STANDARD COLOR OPTIONS TO ARCHITECT FOR REVIEW.
0530 STRUCTURAL FOUNDATION WALL. SEE STRUCTURAL DRAWINGS FOR DETAILING.
0534 OVERFLOW DOWNSPOUT NOZZLE. REFER TO PLUMBING DRAWINGS FOR MORE INFORMATION.
2515 PARAPET MOUNTED DAVIT CRANE. REFER TO SPECIFICATIONS FOR PRODUCT BASIS OF DESIGN. REFER TO STRUCTURAL DRAWINGS FOR FINAL MOUNT LOCATION.



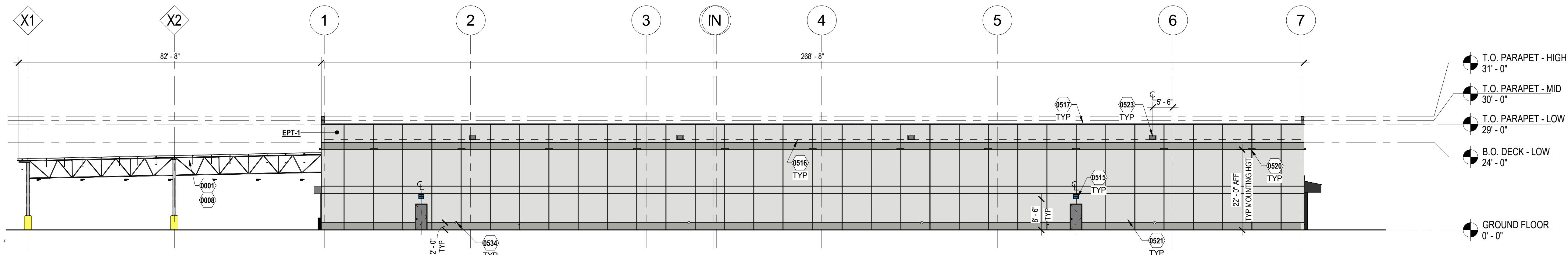
4 SOUTH ELEVATION
A2.01 Scale: 1/16" = 1'-0"



3 NORTH ELEVATION
A2.01 Scale: 1/16" = 1'-0"



2 WEST ELEVATION
A2.01 Scale: 1/16" = 1'-0"



1 EAST ELEVATION
A2.01 Scale: 1/16" = 1'-0"



175 Morrison Street Ave., Suite 400
Akron, OH 44327
Phone: 330.665.0600 Fax: 330.208.4526

THIS INFORMATION IS PRELIMINARY OR INCOMPLETE. IT IS NOT TO BE USED FOR CONSTRUCTION RECORDING PURPOSES OR FOR EMERGENCY.

RYAN COMPANIES

PROJECT TIMBER WOLF

TIMBERWOOD DR.,
BAXTER, MN 56425

Revisions / Submissions		
ID	Description	Date
PERMIT SET		05.24.2024

© 2024 CESO, INC.	
Project number:	764116-01
Scale:	AS NOTED
Drawn By:	CR
Checked By:	MC / TB
Date:	05.24.2024
Issue:	PERMIT SET

Sheet Title:
EXTERIOR ELEVATIONS

A2.01