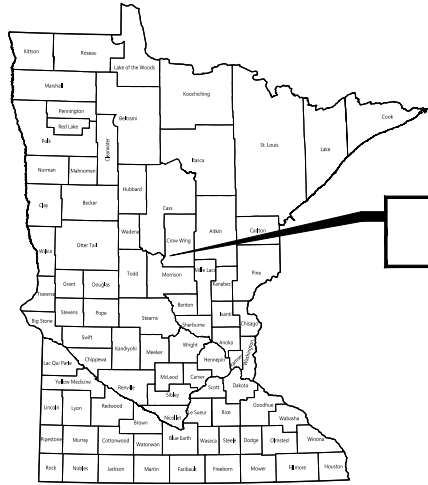


# LIFT STATION 18 RECONSTRUCTION

## BAXTER, MINNESOTA

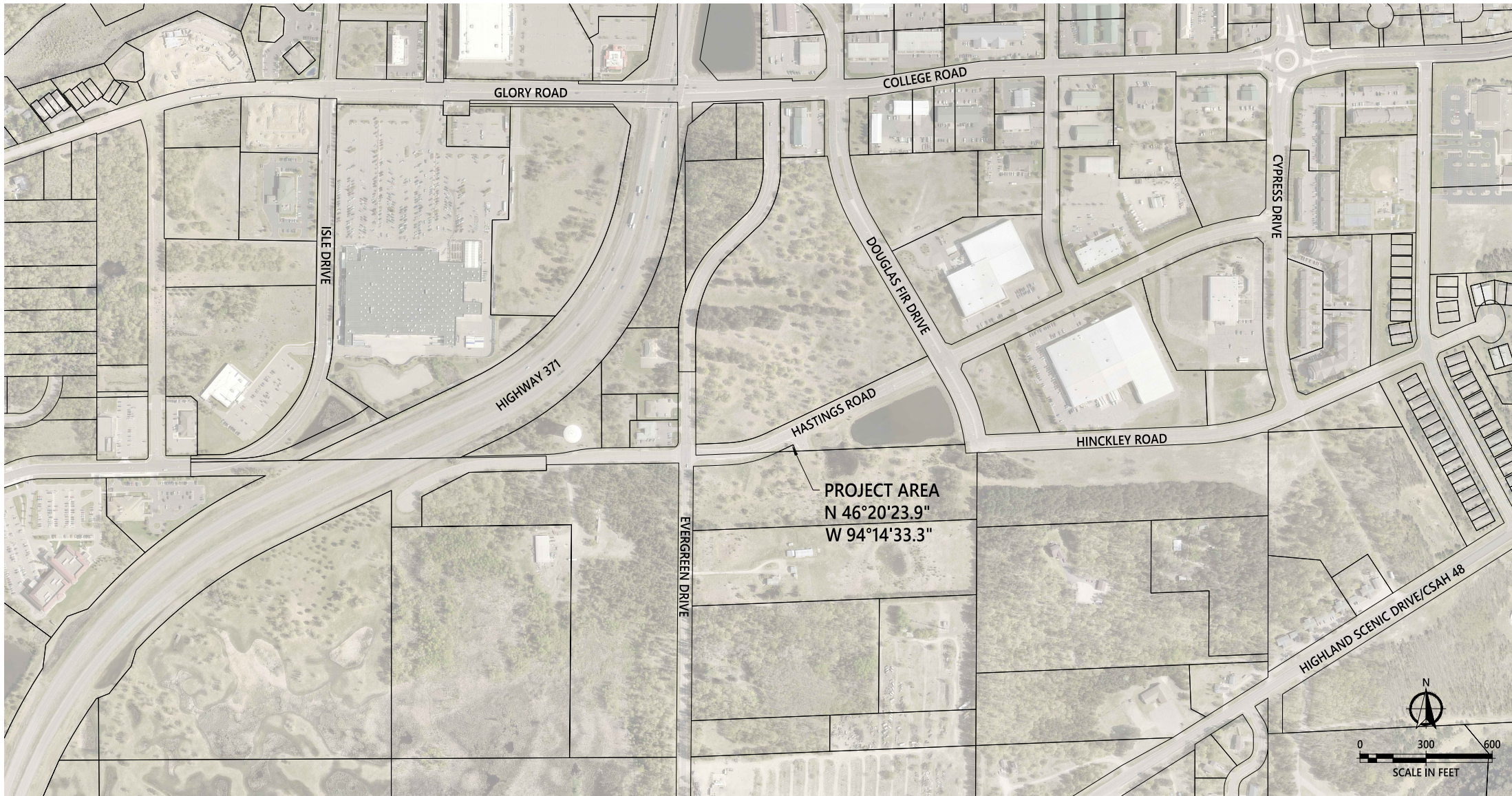


**PROJECT LOCATION**  
BAXTER, CROW WING COUNTY, MINNESOTA

**GOVERNING SPECIFICATIONS**  
THE 2025 EDITION OF THE MINNESOTA DEPARTMENT OF TRANSPORTATION "STANDARD SPECIFICATIONS FOR CONSTRUCTION" AND THE 2025 SCHEDULE OF "MATERIALS CONTROL FOR 2025 STANDARD SPECIFICATIONS" SHALL GOVERN.

SHEET INDEX TABLE	
SHEET NUMBERS	SHEET TITLE
1	TITLE SHEET
2	EXISTING CONDITIONS AND REMOVALS
3	SITE PLAN
4	DEMOLITION PLAN VIEW
5	DEMOLITION SECTION VIEW
6	PROPOSED PLAN VIEW
7	PROPOSED SECTION VIEW

THIS PLAN CONTAINS 7 SHEETS



**CITY OFFICIALS**

MAYOR:	DARREL OLSON
CITY COUNCIL:	MARK CROSS CONNIE LYSCIO ZACK TABATT PATRICK SUNDBERG
UTILITIES COMMISSION:	ROCK YLINIEMI - CHAIR JACK CHRISTOFFERSON DOUGLAS STENBERG DOUG WOLF JOHN BRENNY
CITY ADMINISTRATOR:	BRADLEY CHAPULIS
PUBLIC WORKS DIRECTOR / CITY ENGINEER:	TREVOR WALTER

**APPROVALS**

RECOMMENDED FOR APPROVAL:	_____	DATE
	CITY CONSULTING ENGINEER	
RECOMMENDED FOR APPROVAL:	_____	DATE
	PUBLIC WORKS DIRECTOR / CITY ENGINEER	

MAP SOURCE & YEAR: 2022, CROW WING COUNTY  
DESCRIPTION: PARTIAL MAP OF BAXTER, CROW WING COUNTY, MINNESOTA

THIS PLAN SET CONTAINS COLOR GRAPHICS. BLACK AND WHITE PRINTS ARE NOT OFFICIAL SIGNED DOCUMENTS.

	DRAWN BY: AMM	I HEREBY CERTIFY THAT THIS PLAN, SPECIFICATION, OR REPORT WAS PREPARED BY ME OR UNDER MY DIRECT SUPERVISION AND THAT I AM A DULY LICENSED PROFESSIONAL ENGINEER UNDER THE LAWS OF THE STATE OF MINNESOTA.	DATE	REV#	REVISIONS DESCRIPTION	<h3>LIFT STATION 18 RECONSTRUCTION</h3> <p>TITLE SHEET</p>	<h1>1</h1> <p>PROJECT #: 2025-12129</p>
	CHECKED BY: ALW		ARIC L. WELCH      LIC. NO.: 41983      DATE: 03/31/2026				

© 2026 WIDSETH ARCHITECTS, ENGINEERS, SCIENTISTS & SURVEYORS. FILE: W:\PROJECTS\CITY OF BAXTER\32232\2025-12129\DWG - PLOTTED BY: AVERY MULHOLLAND, March 31, 2026

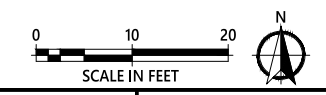
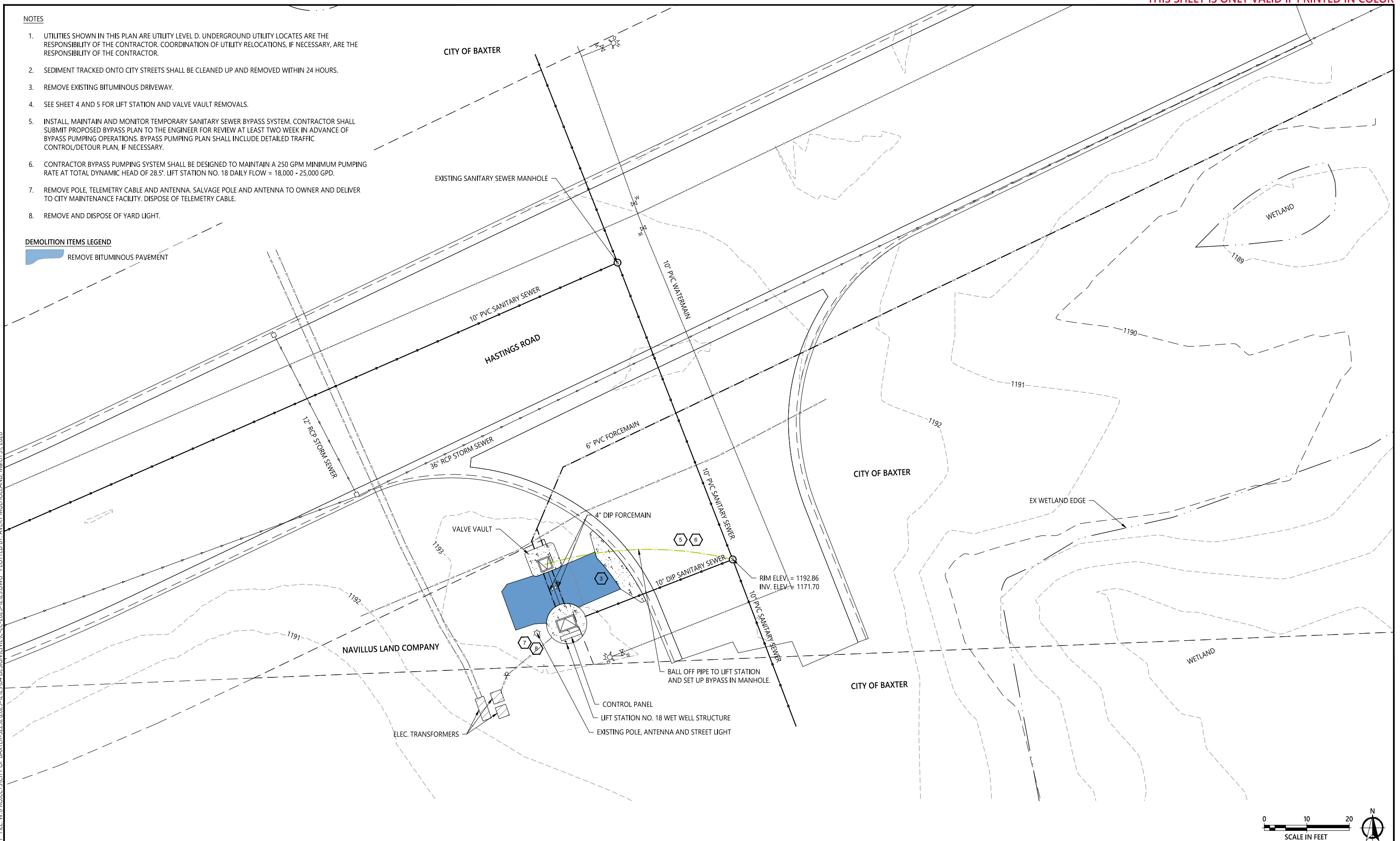
NOTES

1. UTILITIES SHOWN IN THIS PLAN ARE UTILITY LEVEL D. UNDERGROUND UTILITY LOCATES ARE THE RESPONSIBILITY OF THE CONTRACTOR. COORDINATION OF UTILITY RELOCATIONS, IF NECESSARY, ARE THE RESPONSIBILITY OF THE CONTRACTOR.
2. SEDIMENT TRACKED ONTO CITY STREETS SHALL BE CLEANED UP AND REMOVED WITHIN 24 HOURS.
3. REMOVE EXISTING BITUMINOUS DRIVEWAY.
4. SEE SHEET 4 AND 5 FOR LIFT STATION AND VALVE VAULT REMOVALS.
5. INSTALL, MAINTAIN AND MONITOR TEMPORARY SANITARY SEWER BYPASS SYSTEM. CONTRACTOR SHALL SUBMIT PROPOSED BYPASS PLAN TO THE ENGINEER FOR REVIEW AT LEAST TWO WEEK IN ADVANCE OF BYPASS PUMPING OPERATIONS. BYPASS PUMPING PLAN SHALL INCLUDE DETAILED TRAFFIC CONTROL/DETOUR PLAN, IF NECESSARY.
6. CONTRACTOR BYPASS PUMPING SYSTEM SHALL BE DESIGNED TO MAINTAIN A 250 GPM MINIMUM PUMPING RATE AT TOTAL DYNAMIC HEAD OF 28.5'. LIFT STATION NO. 18 DAILY FLOW = 18,000 - 25,000 GPD.
7. REMOVE POLE, TELEMETRY CABLE AND ANTENNA. SALVAGE POLE AND ANTENNA TO OWNER AND DELIVER TO CITY MAINTENANCE FACILITY. DISPOSE OF TELEMETRY CABLE.
8. REMOVE AND DISPOSE OF YARD LIGHT.

DEMOLITION ITEMS LEGEND

 REMOVE BITUMINOUS PAVEMENT

© 2026 WIDSETH. FILE: W:\PROJECTS\CITY OF BAXTER-3223\2025-12129\04 DESIGN\CIVIL-FC-2025-12129.DWG - PLOTTED BY: AVERY MULHOLLAND, March 31, 2026



DRAWN BY: AMM  
 CHECKED BY: ALW  
 ARIC L. WELCH LIC. NO.: 41983 DATE: 03/31/2026

DATE	REV#	REVISIONS DESCRIPTION

**LIFT STATION 18 RECONSTRUCTION**  
 EXISTING CONDITIONS

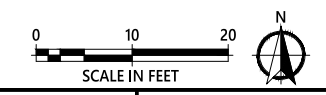
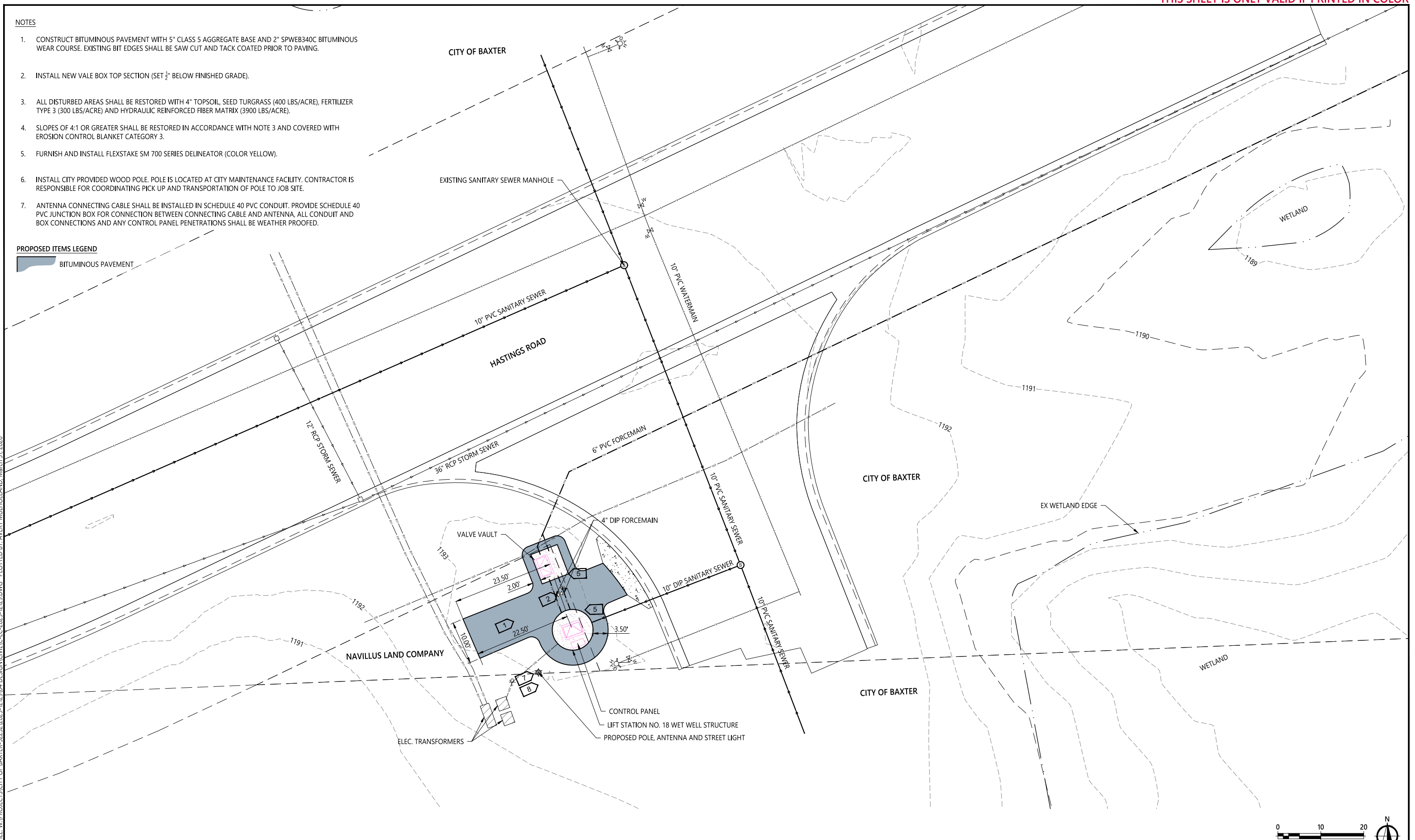
NOTES

1. CONSTRUCT BITUMINOUS PAVEMENT WITH 5" CLASS 5 AGGREGATE BASE AND 2" SPWEB340C BITUMINOUS WEAR COURSE. EXISTING BIT EDGES SHALL BE SAW CUT AND TACK COATED PRIOR TO PAVING.
2. INSTALL NEW VALE BOX TOP SECTION (SET  $\frac{1}{2}$ " BELOW FINISHED GRADE).
3. ALL DISTURBED AREAS SHALL BE RESTORED WITH 4" TOPSOIL, SEED TURGRASS (400 LBS/ACRE), FERTILIZER TYPE 3 (300 LBS/ACRE) AND HYDRAULIC REINFORCED FIBER MATRIX (3900 LBS/ACRE).
4. SLOPES OF 4:1 OR GREATER SHALL BE RESTORED IN ACCORDANCE WITH NOTE 3 AND COVERED WITH EROSION CONTROL BLANKET CATEGORY 3.
5. FURNISH AND INSTALL FLEXSTAKE SM 700 SERIES DELINEATOR (COLOR YELLOW).
6. INSTALL CITY PROVIDED WOOD POLE. POLE IS LOCATED AT CITY MAINTENANCE FACILITY. CONTRACTOR IS RESPONSIBLE FOR COORDINATING PICK UP AND TRANSPORTATION OF POLE TO JOB SITE.
7. ANTENNA CONNECTING CABLE SHALL BE INSTALLED IN SCHEDULE 40 PVC CONDUIT. PROVIDE SCHEDULE 40 PVC JUNCTION BOX FOR CONNECTION BETWEEN CONNECTING CABLE AND ANTENNA, ALL CONDUIT AND BOX CONNECTIONS AND ANY CONTROL PANEL PENETRATIONS SHALL BE WEATHER PROOFED.

PROPOSED ITEMS LEGEND

 BITUMINOUS PAVEMENT

© 2026 WIDSETH. FILE: W:\PROJECTS\CITY OF BAXTER-3223\2025-12129\04 DESIGN\CIVIL-FC-2025-12129.DWG - PLOTTED BY: AVERY MULHOLLAND, March 31, 2026





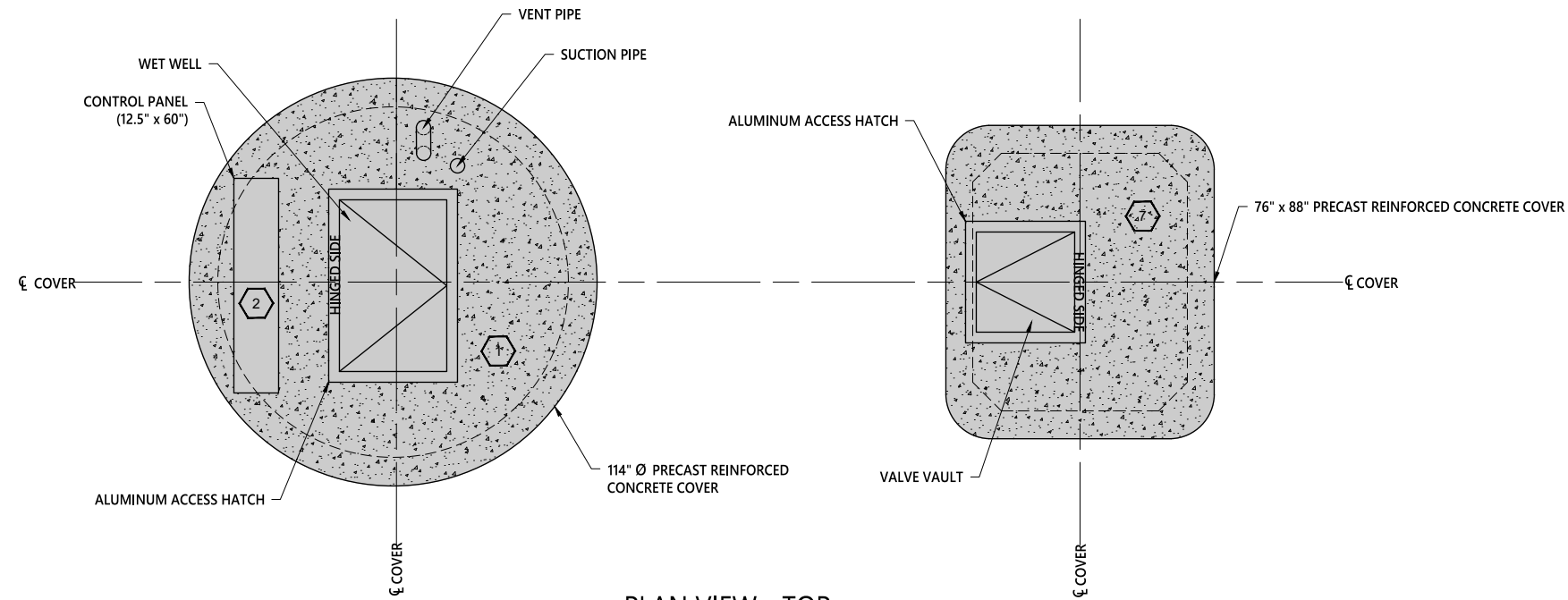
DRAWN BY: AMM  
 CHECKED BY: ALW  
 I HEREBY CERTIFY THAT THIS PLAN, SPECIFICATION, OR REPORT WAS PREPARED BY ME, OR UNDER MY DIRECT SUPERVISION AND THAT I AM A DULY LICENSED PROFESSIONAL ENGINEER UNDER THE LAWS OF THE STATE OF MINNESOTA.  
 ARIC L. WELCH LIC. NO.: 41983 DATE: 03/31/2026

DATE	REV#	REVISIONS DESCRIPTION

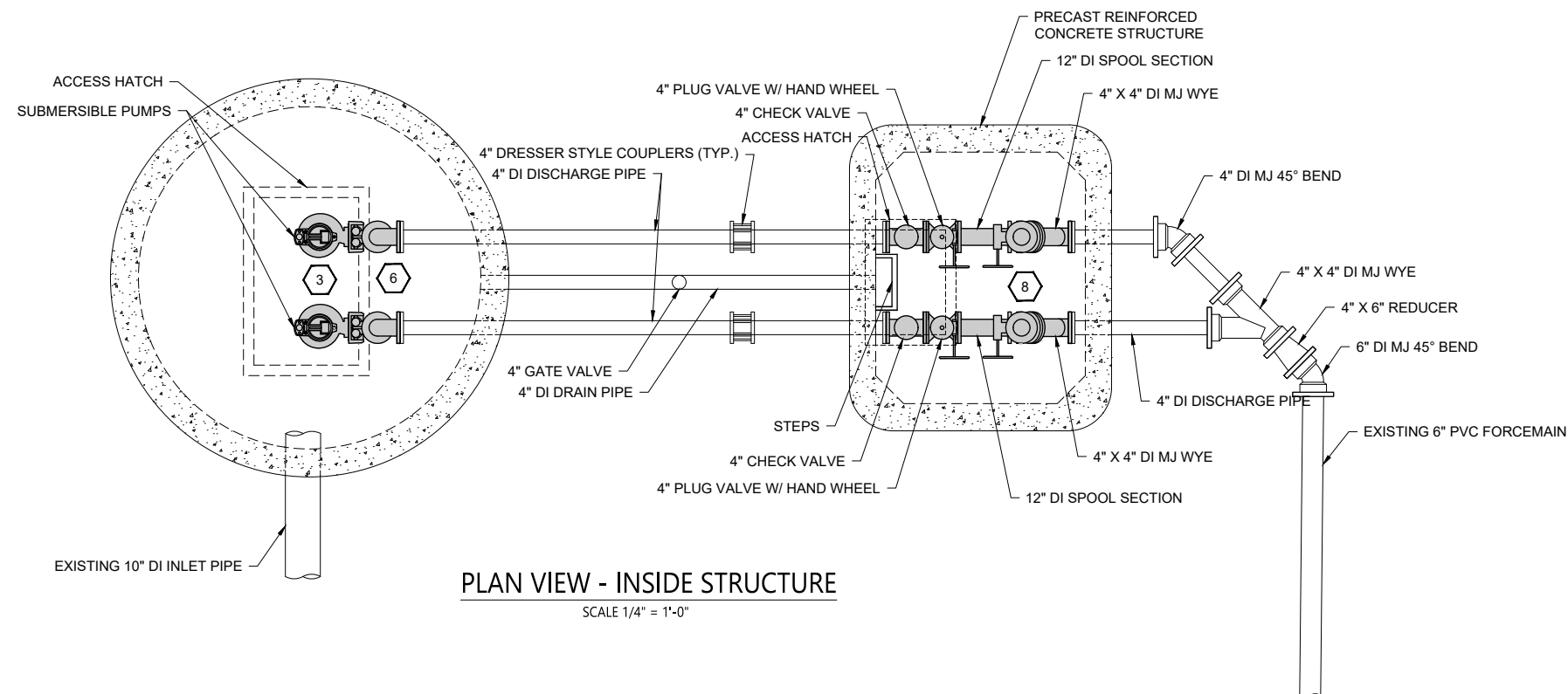
LIFT STATION 18 RECONSTRUCTION  
 PROPOSED CONDITIONS

LEGEND

-  DENOTES DEMOLITION
-  DEMOLITION NOTES (SEE SHEET 5)

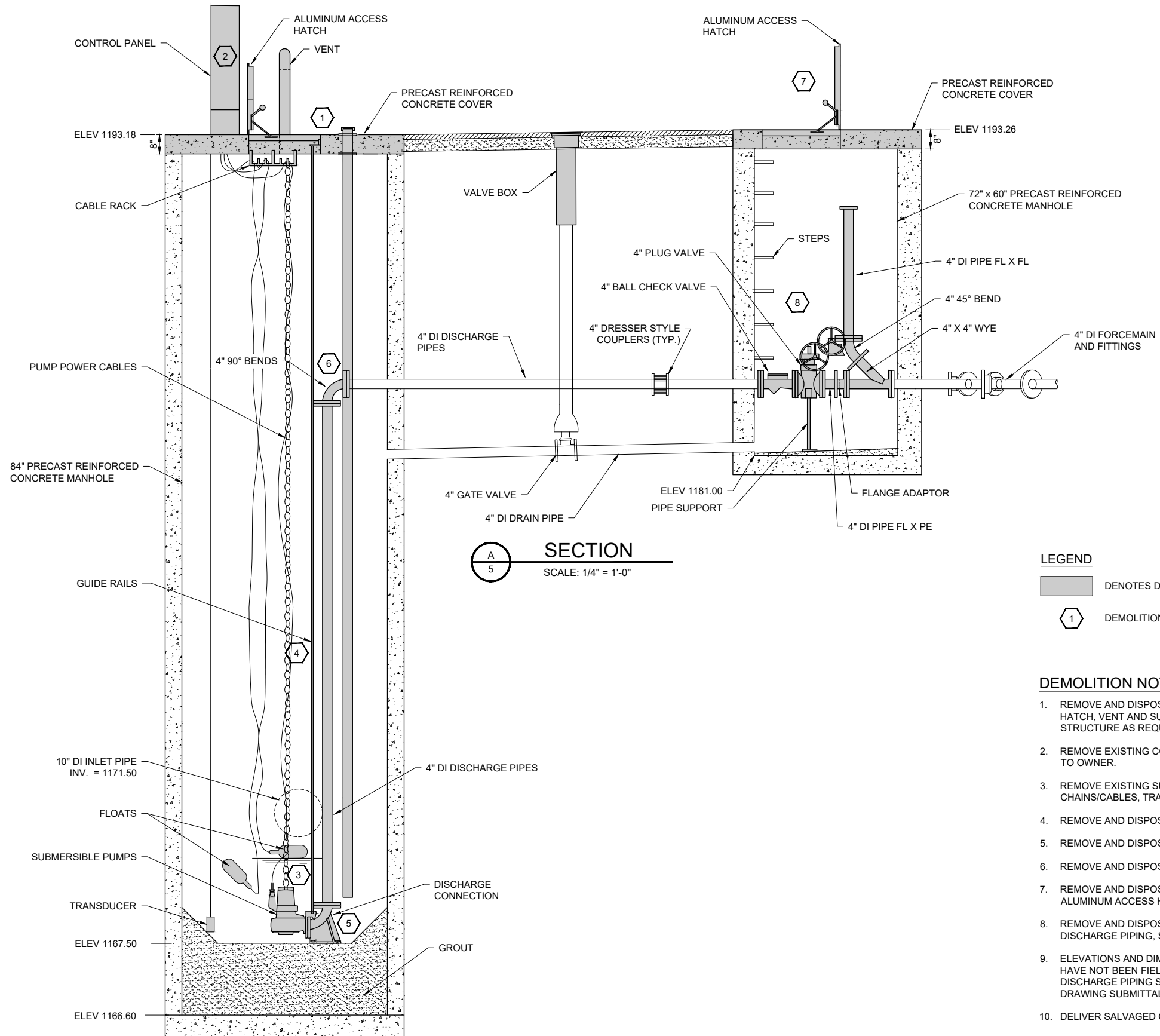


PLAN VIEW - TOP  
SCALE 1/4" = 1'-0"



PLAN VIEW - INSIDE STRUCTURE  
SCALE 1/4" = 1'-0"

DATE	REV#	REVISIONS DESCRIPTION



**SECTION**  
SCALE: 1/4" = 1'-0"

**LEGEND**

- DENOTES DEMOLITION
- DEMOLITION NOTES

**DEMOLITION NOTES**

1. REMOVE AND DISPOSE OF EXISTING LIFT STATION COVER, ALUMINUM ACCESS HATCH, VENT AND SUCTION PIPE CONNECTION. EXCAVATE AROUND STRUCTURE AS REQUIRED.
2. REMOVE EXISTING CONTROL PANEL AND RELATED COMPONENTS AND SALVAGE TO OWNER.
3. REMOVE EXISTING SUBMERSIBLE PUMPS, POWER CABLES, LIFT CHAINS/CABLES, TRANSDUCER AND FLOATS AND SALVAGE TO OWNER.
4. REMOVE AND DISPOSE OF EXISTING PUMP GUIDE SYSTEM AND SUPPORTS.
5. REMOVE AND DISPOSE OF EXISTING PUMP BASE ELBOWS.
6. REMOVE AND DISPOSE OF EXISTING 6" 90° BENDS AND PIPE SUPPORTS.
7. REMOVE AND DISPOSE OF EXISTING CONCRETE VALVE VAULT COVE AND ALUMINUM ACCESS HATCH.
8. REMOVE AND DISPOSE OF EXISTING 6" CHECK VALVES, 6" PLUG VALVES, 6" DISCHARGE PIPING, SLEEVES AND COUPLINGS.
9. ELEVATIONS AND DIMENSIONS SHOWN ON THE PLAN ARE APPROXIMATE AND HAVE NOT BEEN FIELD VERIFIED. CONTRACTOR SHALL FIELD VERIFY EXISTING DISCHARGE PIPING SPACING AND ELEVATIONS PRIOR TO PRECAST SHOP DRAWING SUBMITTAL.
10. DELIVER SALVAGED COMPONENTS TO CITY MAINTENANCE FACILITY.

© 2026 WIDSETH. FILE: W:\PROJECTS\CITY OF BAXTER-32232\2025-12129\04 DESIGN\CIVIL\CD-2025-12129.DWG PLOTTED BY: AVERY MULHOLLAND, March 31, 2026



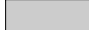
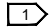
DRAWN BY: AMM  
CHECKED BY: ALW  
ARIC L. WELCH LIC. NO.: 41983 DATE: 03/31/2026

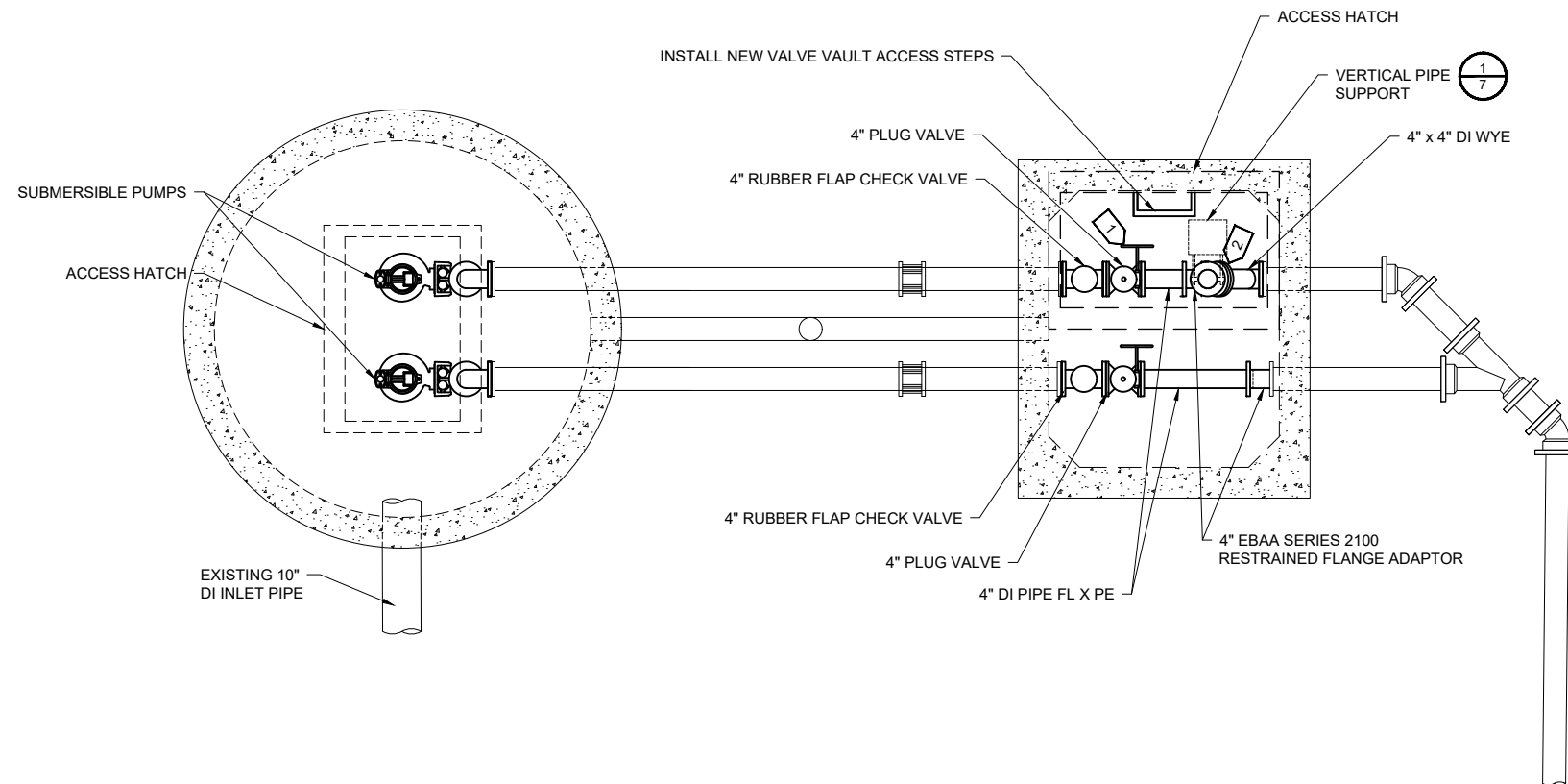
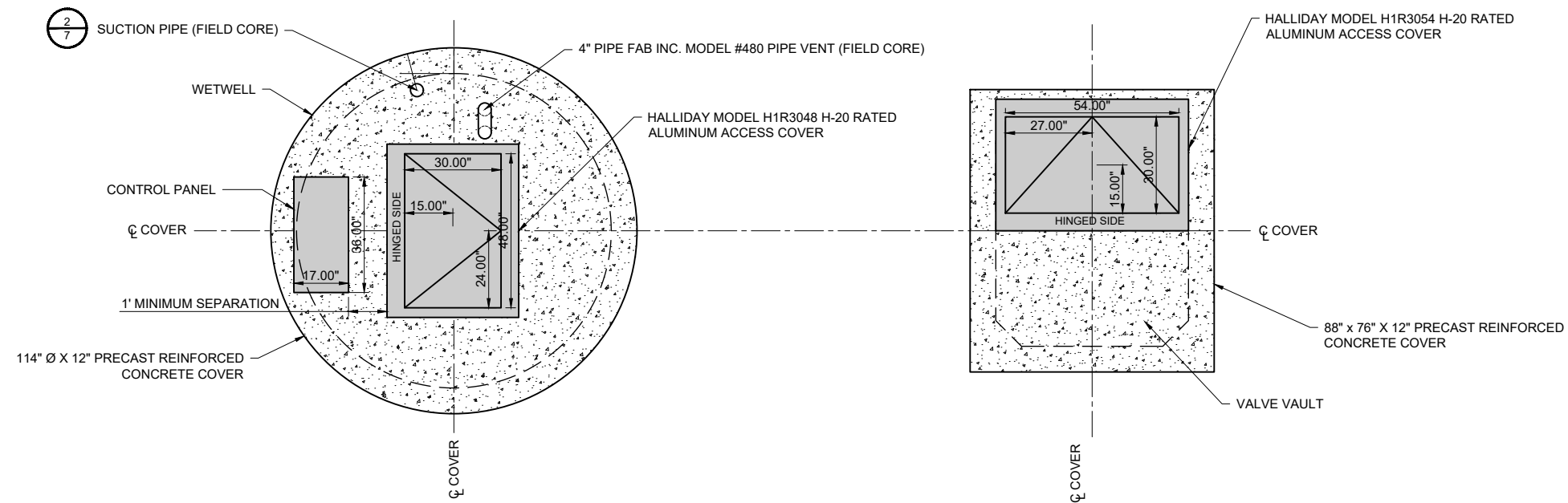
DATE	REV#	REVISIONS DESCRIPTION

**LIFT STATION 18 RECONSTRUCTION**

DEMOLITION SECTION VIEW

LEGEND

-  ITEMS SUPPLIED BY OWNER AND INSTALLED BY CONTRACTOR
-  CONSTRUCTION NOTES (SEE SHEET 7)



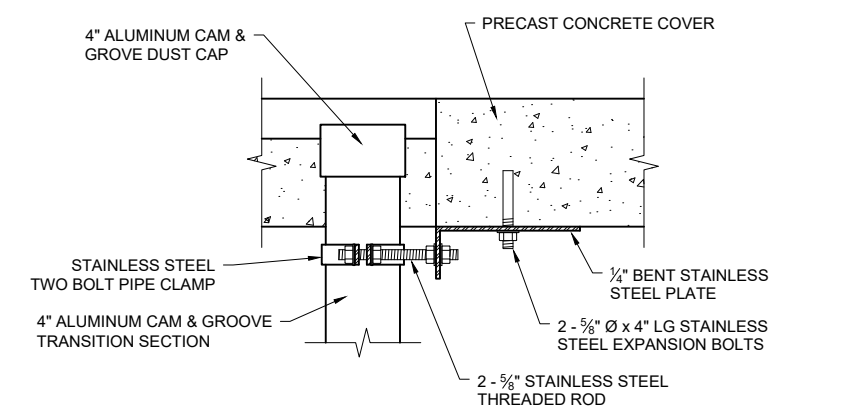
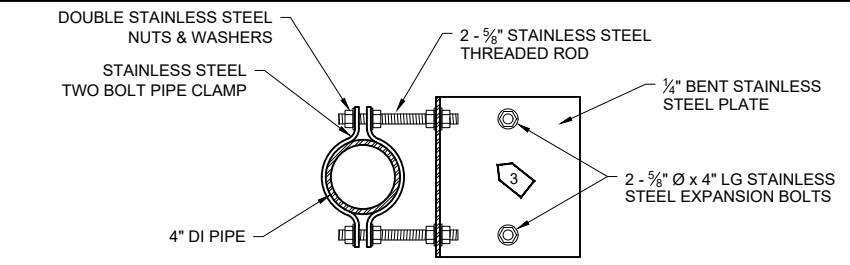
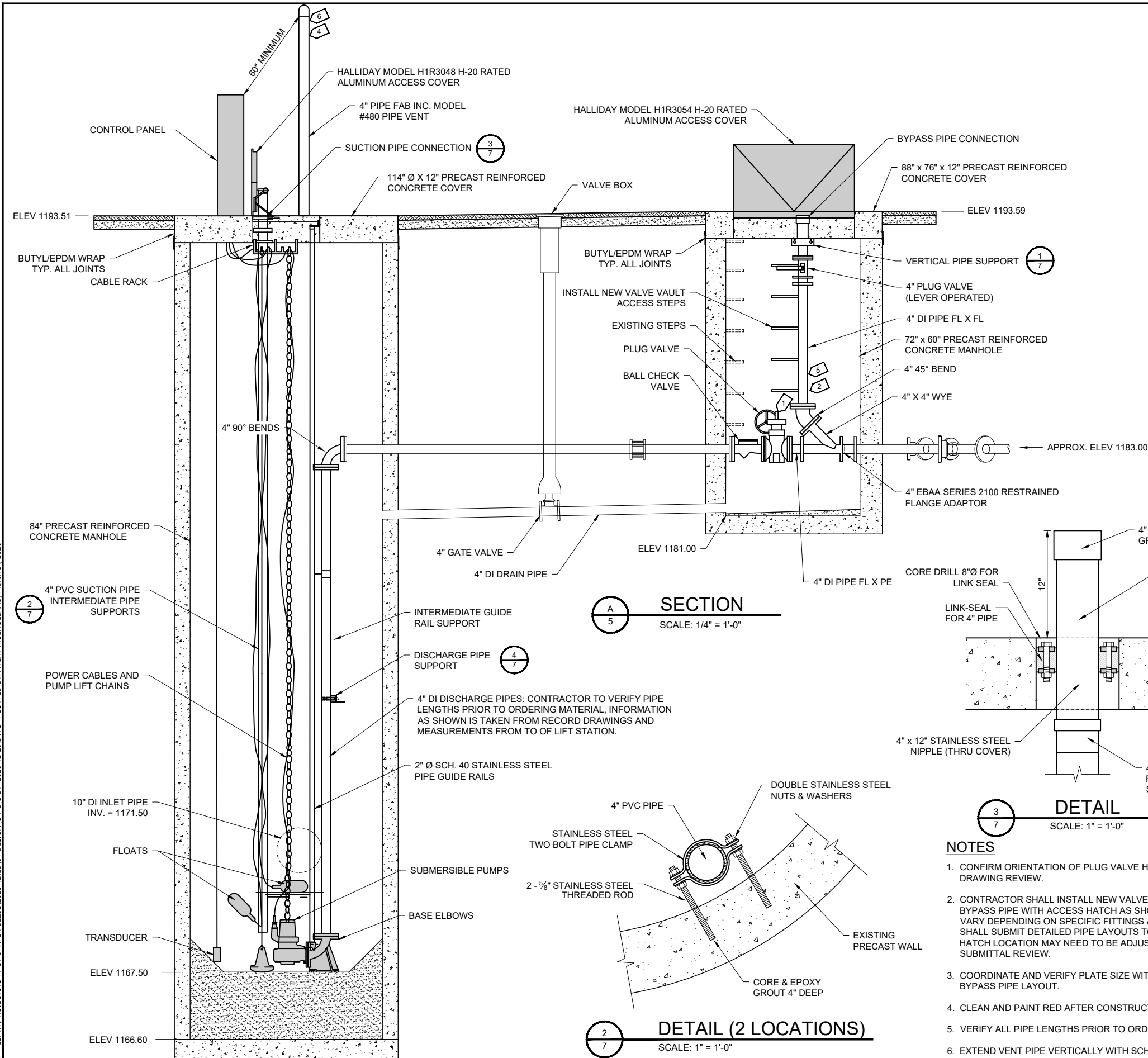
DRAWN BY: AMM  
 CHECKED BY: ALW  
 I HEREBY CERTIFY THAT THIS PLAN, SPECIFICATION, OR REPORT WAS PREPARED BY ME OR UNDER MY DIRECT SUPERVISION AND THAT I AM A DULY LICENSED PROFESSIONAL ENGINEER UNDER THE LAWS OF THE STATE OF MINNESOTA.  
 ARIC L. WELCH LIC. NO.: 41983 DATE: 03/31/2026

DATE	REV#	REVISIONS DESCRIPTION

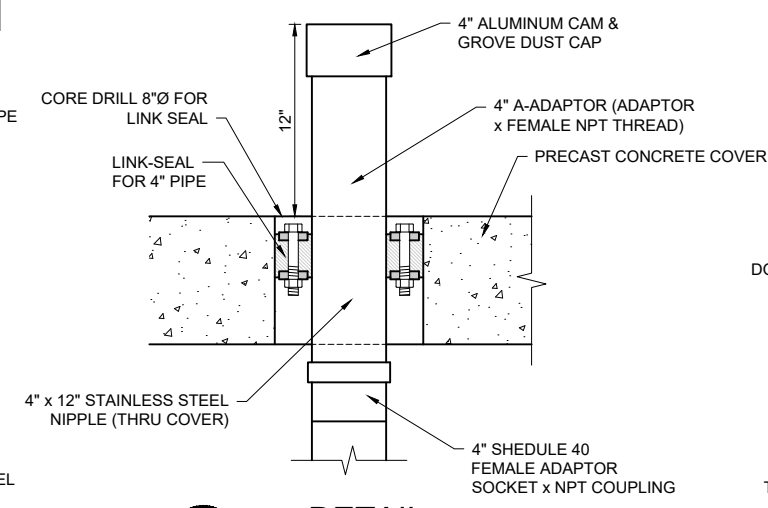
LIFT STATION 18 RECONSTRUCTION

PROPOSED PLAN VIEW

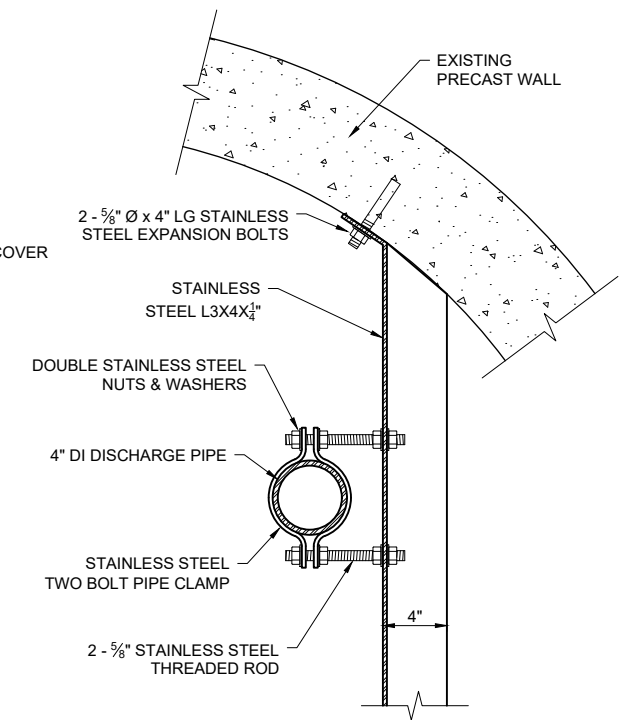
© 2026 WIDSETH. FILE: W:\PROJECTS\CITY OF BAXTER-32232\2025-12129\04 DESIGN\CIVIL\CDP-2025-12129.DWG PLOTTED BY: AVERY MULHOLLAND, March 31, 2026



**DETAIL 1**  
SCALE: 1" = 1'-0"



**DETAIL 3**  
SCALE: 1" = 1'-0"



**DETAIL 4**  
SCALE: 1" = 1'-0"

**SECTION**  
SCALE: 1/4" = 1'-0"

**DETAIL (2 LOCATIONS)**  
SCALE: 1" = 1'-0"

**NOTES**

1. CONFIRM ORIENTATION OF PLUG VALVE HANDWHEELS DURING SHOP DRAWING REVIEW.
2. CONTRACTOR SHALL INSTALL NEW VALVES, PIPE AND FITTINGS TO ALIGN 4" BYPASS PIPE WITH ACCESS HATCH AS SHOWN. DIMENSIONS SHOWN MAY VARY DEPENDING ON SPECIFIC FITTINGS AND VALVES USED. CONTRACTOR SHALL SUBMIT DETAILED PIPE LAYOUTS TO ENGINEERING FOR REVIEW. HATCH LOCATION MAY NEED TO BE ADJUSTED DURING VALVE AND FITTING SUBMITTAL REVIEW.
3. COORDINATE AND VERIFY PLATE SIZE WITH CLAMP DIMENSIONS AND BYPASS PIPE LAYOUT.
4. CLEAN AND PAINT RED AFTER CONSTRUCTION IS COMPLETE.
5. VERIFY ALL PIPE LENGTHS PRIOR TO ORDERING.
6. EXTEND VENT PIPE VERTICALLY WITH SCH. 40 PIPE.

**LEGEND**

- ITEMS SUPPLIED BY OWNER AND INSTALLED BY CONTRACTOR
- CONSTRUCTION NOTES

© 2026 WIDSETH. FILE: W:\PROJECTS\CITY OF BAXTER-32232\2025-12129\04 DESIGN\CIVIL\CDP-2025-12129.DWG. PLOTTED BY: AVERY MULHOLLAND, MARCH 31, 2026