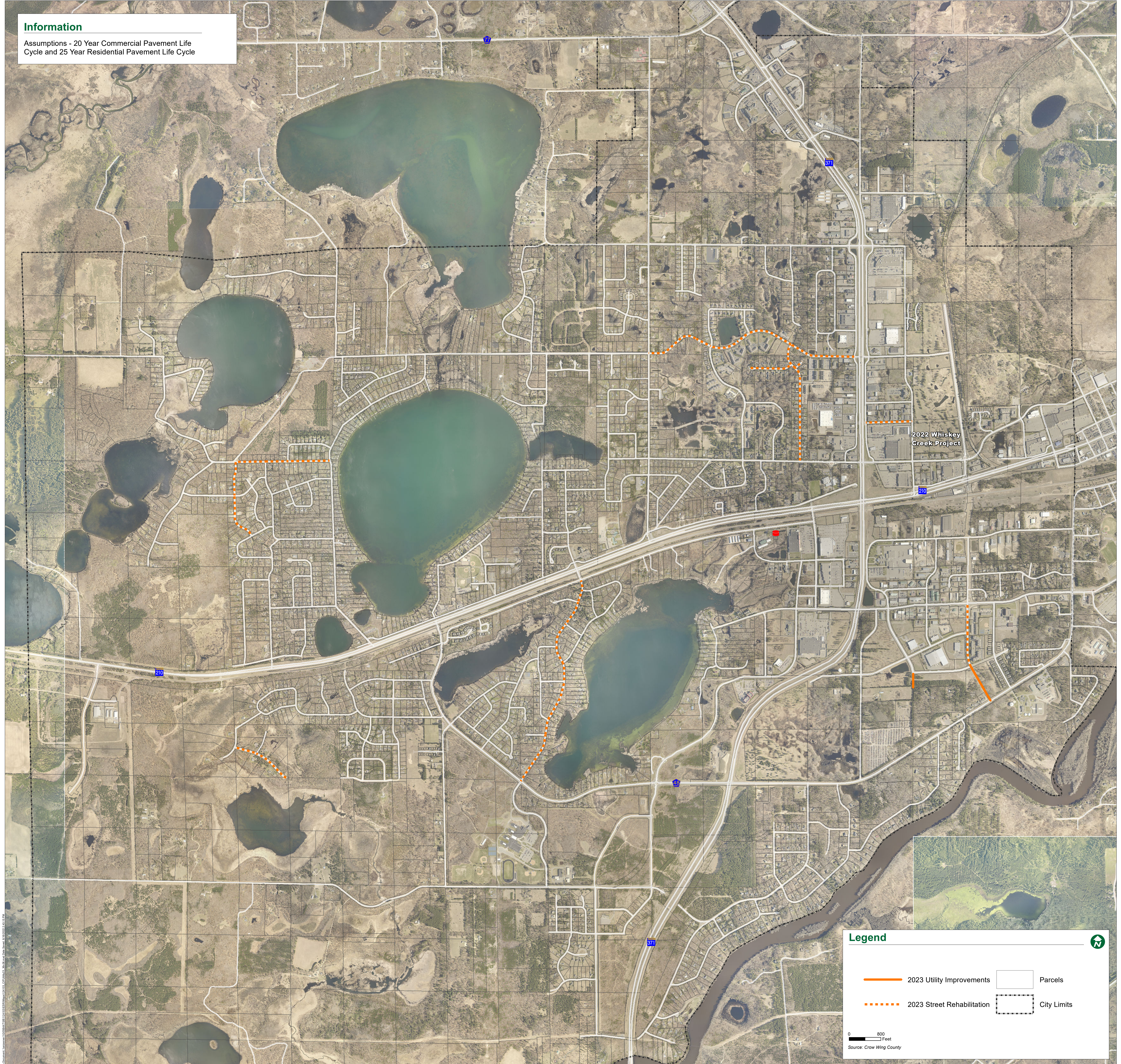


Information
Assumptions - 20 Year Commercial Pavement Life Cycle and 25 Year Residential Pavement Life Cycle



Legend

- 2023 Utility Improvements
- - - 2023 Street Rehabilitation
- Parcels
- City Limits

0 800 Feet
Source: Crow Wing County

Map Data: Aerial Imagery © 2022, Parcel Data © 2022, City Limits © 2022