

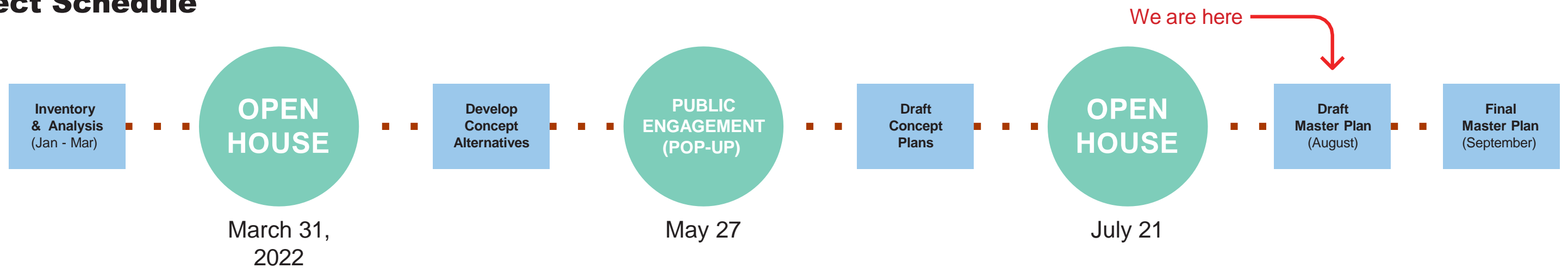
A scenic view of a river flowing through a lush green park. The river is in the foreground, reflecting the surrounding greenery. In the background, there are dense trees and a picnic table on the right side. The overall atmosphere is peaceful and natural.

**City of Baxter
Mississippi River
Overlook Park
Master Plan**

Meeting Agenda

- Review the draft master plan document
- Review the two master plan alternative concepts
- Recommend one preferred alternative to present to the city
- Discussion and questions

Project Schedule



Chapter Highlights

- Vision Statement
- Public Process
- Project Timeline

Vision Statement

Mississippi River Overlook Park will provide high-quality, non-motorized recreational and educational amenities while preserving and restoring high biodiversity forests, wetlands, and riparian areas.

Public Process

Embracing and protecting the natural resources of the land is consistent with the goals of multiple stakeholders including the Conservation Fund, the Minnesota Department of Military Affairs, the Camp Ripley Environmental Team, and the Legislative Citizen Commission on Minnesota Resources (LCCMR). The City started the process with additional goals for the study, including:

- Identification of potential roadway corridors to connect City of Baxter residents south of the project location with Mapleton Road north of the project property
- Identification of potential corridors for the proposed Camp Ripley State Veteran's Trail to work in concert with the Master Plan and Community Use Policy
- Protection of the Camp Ripley training mission from incompatible land uses, such as residential or commercial development within the Army Compatible Use Buffer (ACUB)
- Identification of outdoor educational opportunities and future relationships with local and regional institutional, cultural, special interest groups



CITY OF BAXTER

Mississippi River Overlook Park Master Plan & Community Use Policy



Chapter Highlights

- Overview
- Description of Nearby Regional Parks & Trails
- Camp Ripley Overview

Fig 3: Regional Context

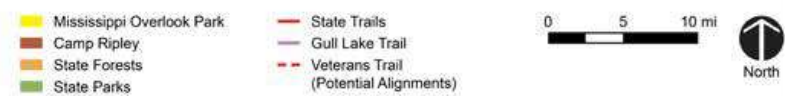
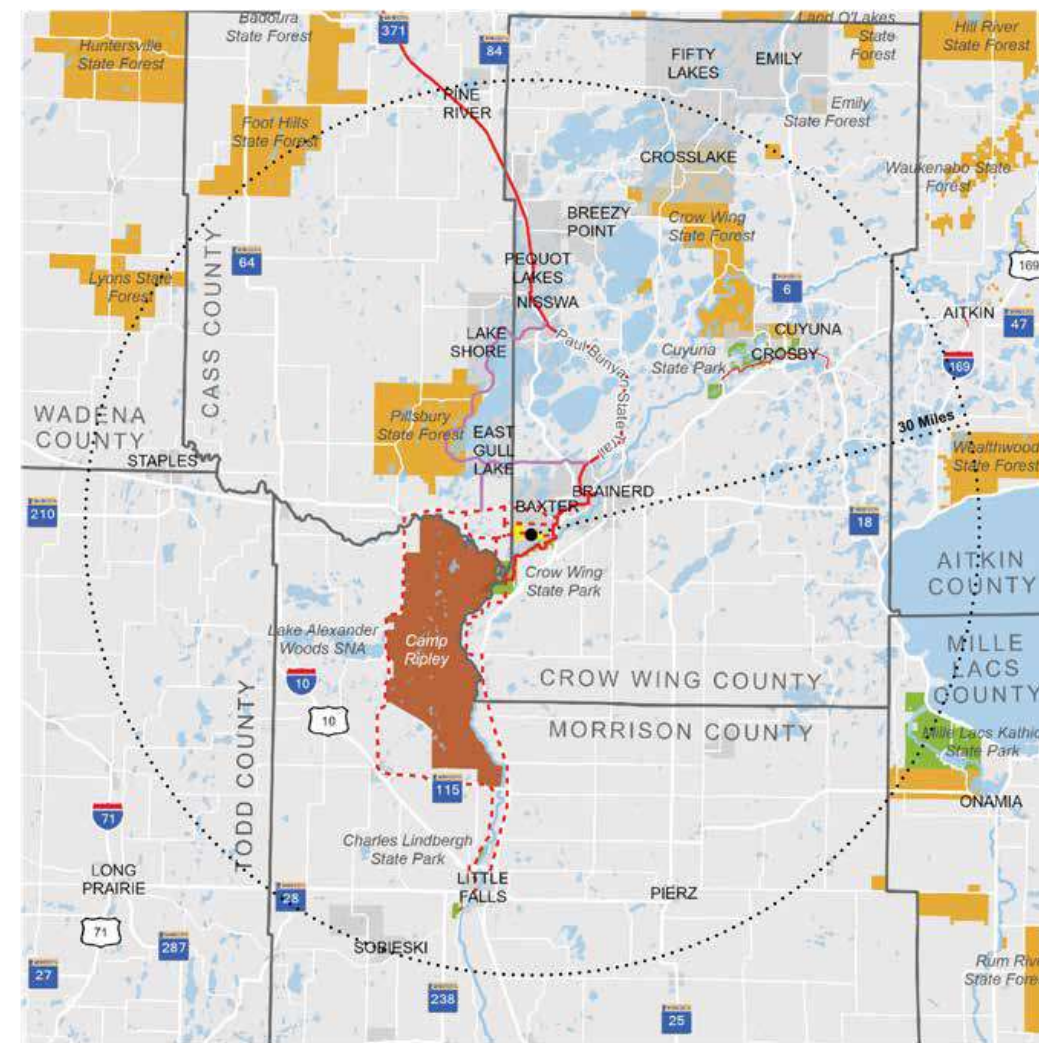


Fig 4: Regionally Significant Parks & Forests

	PARKS AND FORESTS WITHIN 30 MILES									
	Northland Arboretum	Crow Wing State Park	Pillsbury State Forest	Cuyuna State Park	Lake Alexander Woods SNA	Crow Wing State Forest	Charles Lindbergh State Park	Wealthwood State Forest	Lyons State Forest	Mille Lacs Kathio State Park
Driving Distance	5 mi	8 mi	13 mi	23 mi	25 mi	26 mi	33 mi	36 mi	40 mi	40 mi
Size (acres)	400	3,119	25,612	5,000	1,990	33,714	570	15,042	14,789	12,900
Multi-Use Trails		●		●						●
Hiking Trails	●	●	●	●	●	●	●	●	●	●
Snowshoe Trails	●	●	●	●	●	●	●	●	●	●
XC Ski Trails	●		●	●	●					●
Bike Trails		●		●						●
MTB Trails				●						
OHV Trails						●			●	
Snowmobile Trails			●			●		●	●	●
Horse Trails			●							●
Tent Camping		●	●	●		●	●	●	●	●
Car / RV Camping		●	●	●		●	●	●	●	●
Camper Cabins		●		●						●
Fishing		●	●	●		●	●	●	●	●
Hunting			●	●	●	●		●	●	
Water Access		●	●	●		●	●	●	●	●
Boat Launch		●	●	●		●	●	●	●	●
Outlooks / Blinds	●	●		●						●
Play Features	●					●	●			●
Outdoor Gathering	●	●	●	●		●	●			●
Indoor Gathering	●	●		●		●	●			●
Education	●	●		●			●			●
Equipment Rental	●	●					●			●

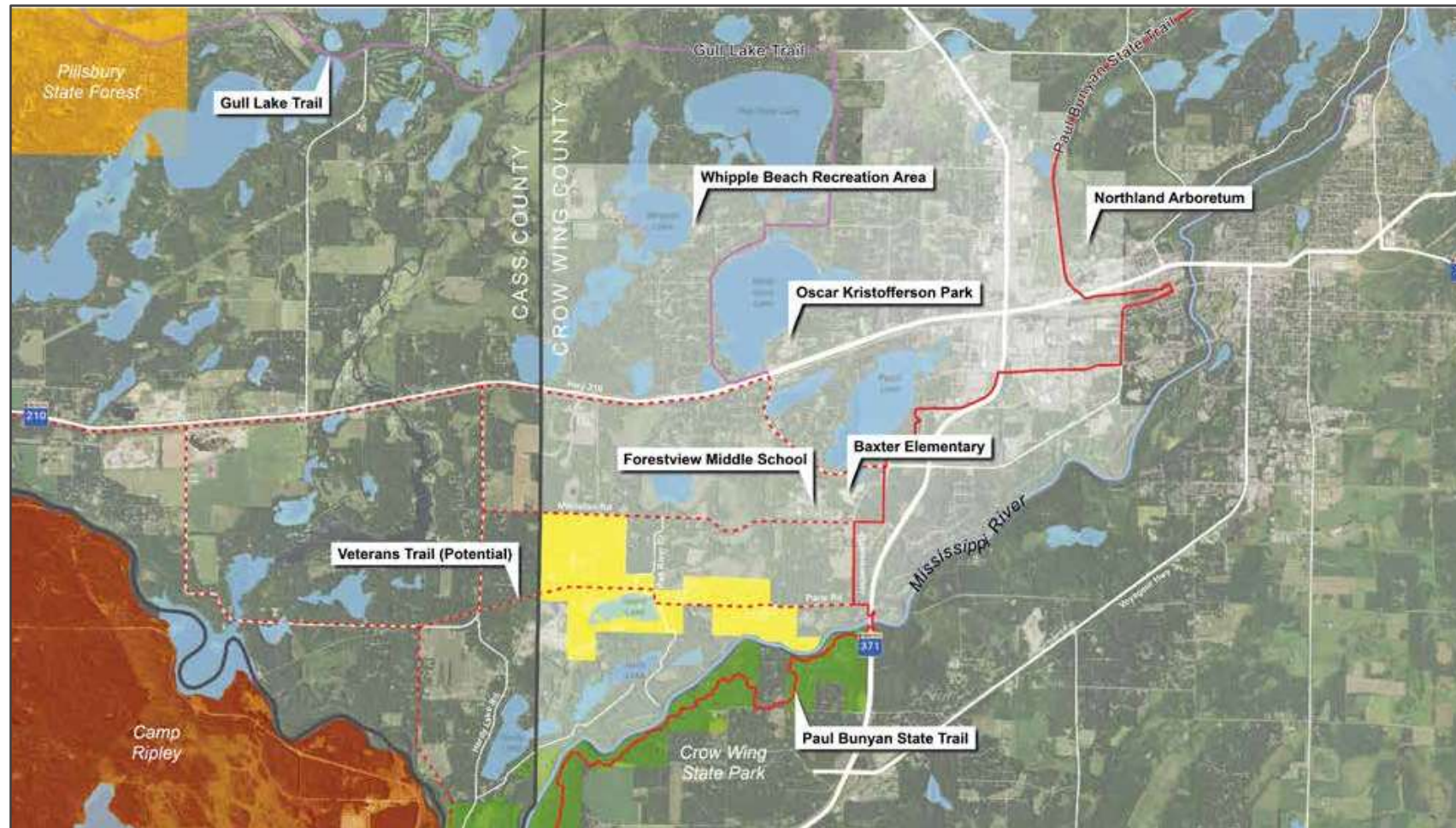
Northland Arboretum: www.northlandarboretum.com
 Minnesota State Parks and Recreation Areas: Mn DNR: www.dnr.state.mn.us/landuse/landuse.html

Chapter 3: Local & Site Context

Mississippi River Overlook Park

Chapter Highlights

- Overview
- Mississippi River
- Island Lake & Pike Creek
- Existing Infrastructure
- Army Compatible Use Buffer (ACUB)
- User Groups



Existing east-west utility corridor, looking west.



Existing picnic area near the Mississippi River, looking west.



Mississippi River with Crow Wing State Park at right, looking east.



Existing river access and canoe-in campsites.



Pike Creek, as it flows in the Mississippi River.



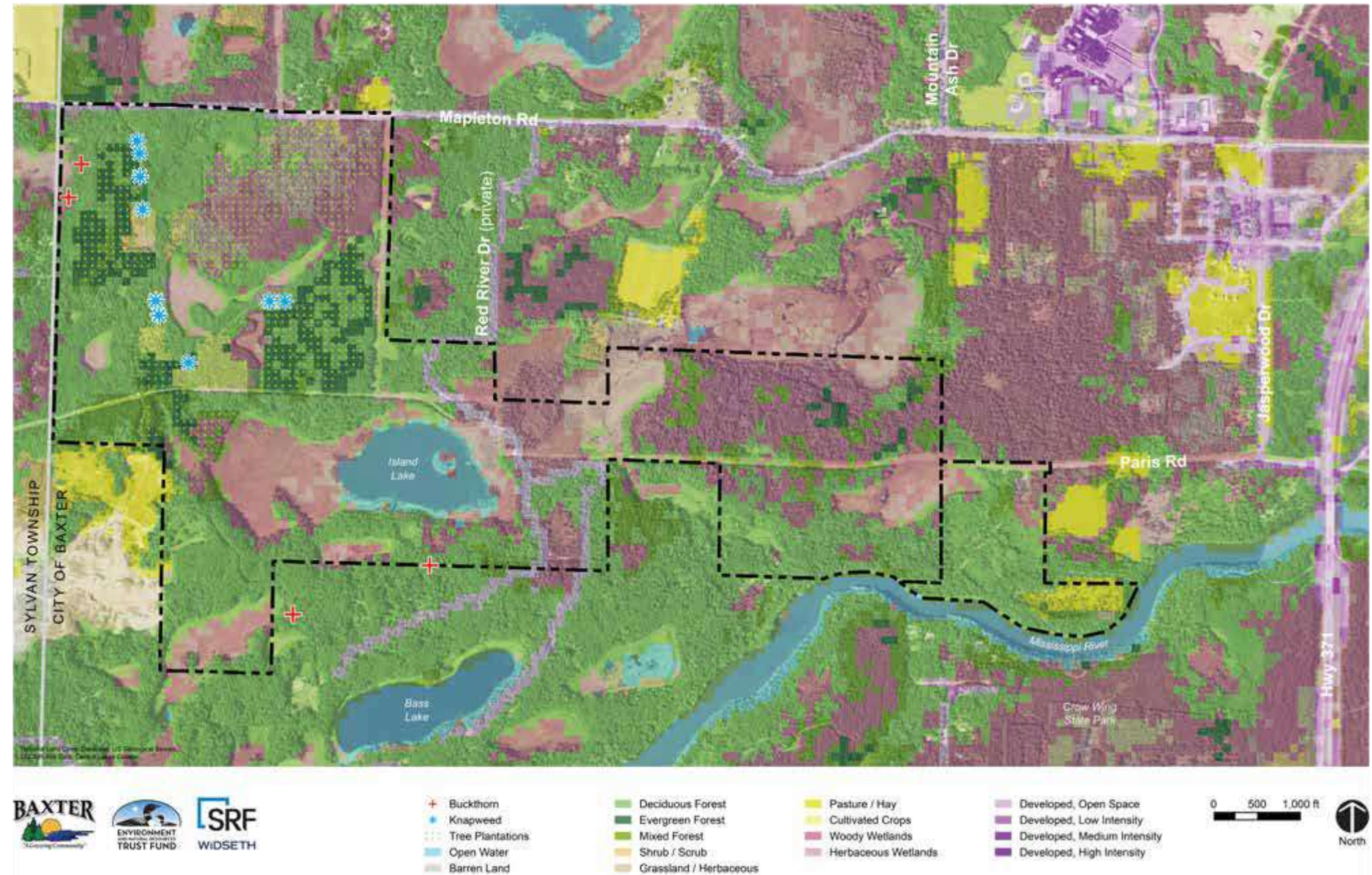
Existing east-west utility corridor, looking west over Pike Creek, adjacent wetlands, and tamarack stand.



Chapter Highlights

- Overview
- Park Forests
- Park Wetlands
- Park Riparian Areas & Streams
- Wildlife Resources

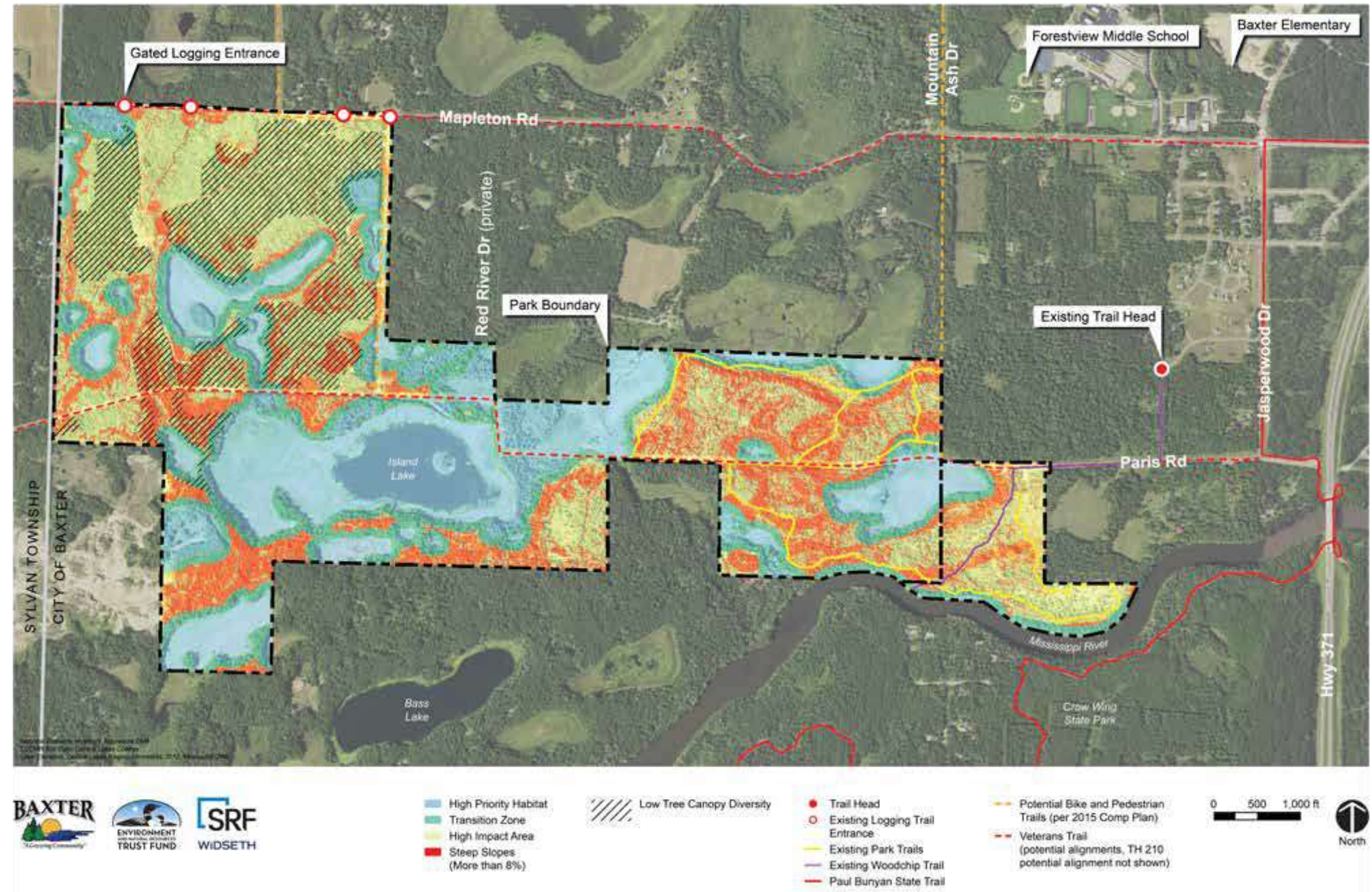
Fig 8: Existing Land Cover



Chapter Highlights

- Neighboring Residents
- Hydrology
- Topography
- Site Opportunities
- Key Findings and Conclusions

Fig 11: Site Opportunities



Chapter Highlights

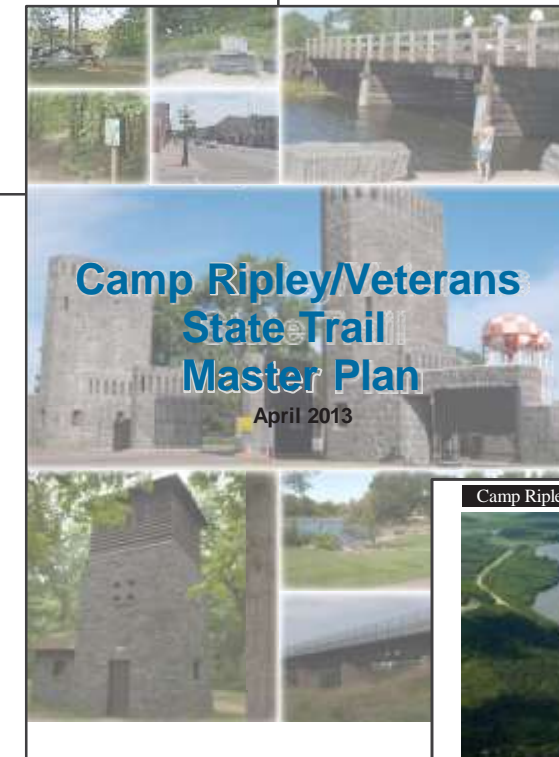
- Camp Ripley Sentinel Landscape Strategic Plan
- City of Baxter Comprehensive Plan
- Crow Wing County Comprehensive Plan
- Sylvan Township Master Plan



Chapter 7: Camp Ripley Veterans State Trail

Chapter Highlights

- Written Summary of plan and preferred alignments



Chapter 8: Master Plan

Mississippi River Overlook Park

Chapter Highlights

- Description and Graphics for Concept Options A & B
- Amenity Examples with Images
- Interpretation Plan
- Public Hunting Access Plan
- Community Use Plan
- Public Roads & Utilities Plan & Findings
- Illustrative Road Corridor Sections and Layouts



Access Roads



Parking



Interpretive Signage



Nature Trail - Soft Surface



Nature Trail - Boardwalk



Nature Trail - Paved

Fig 12: Master Plan - Option A

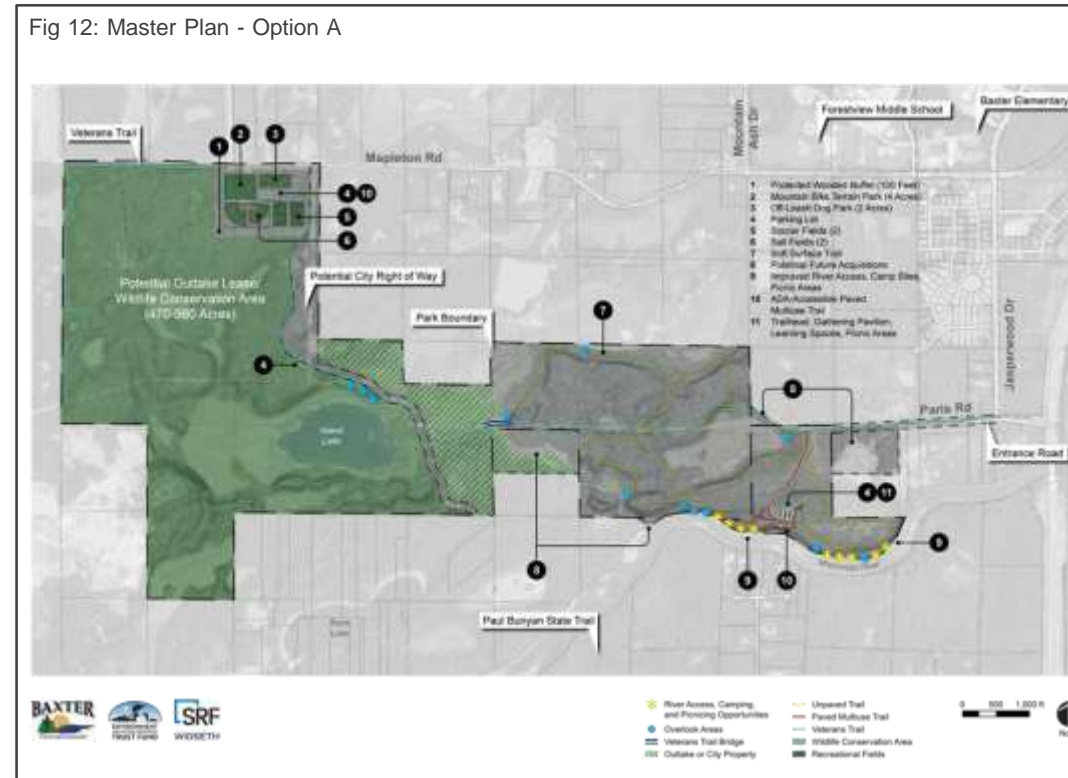
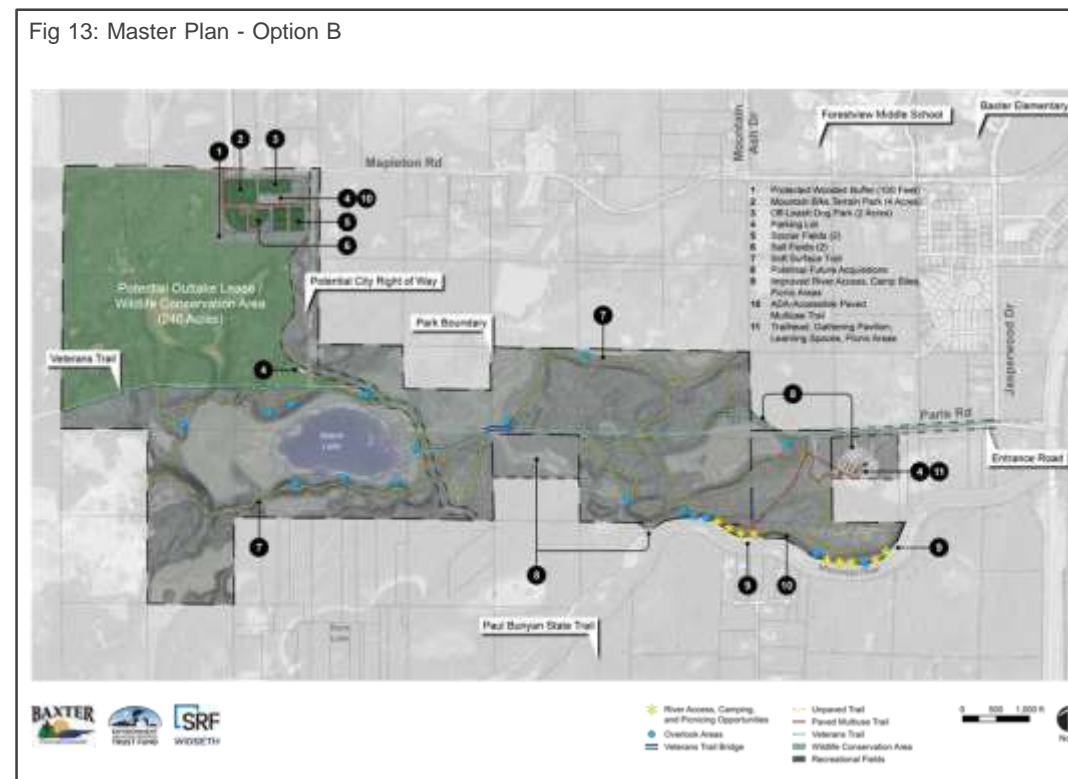


Fig 13: Master Plan - Option B



Chapter 9: Acquisitions

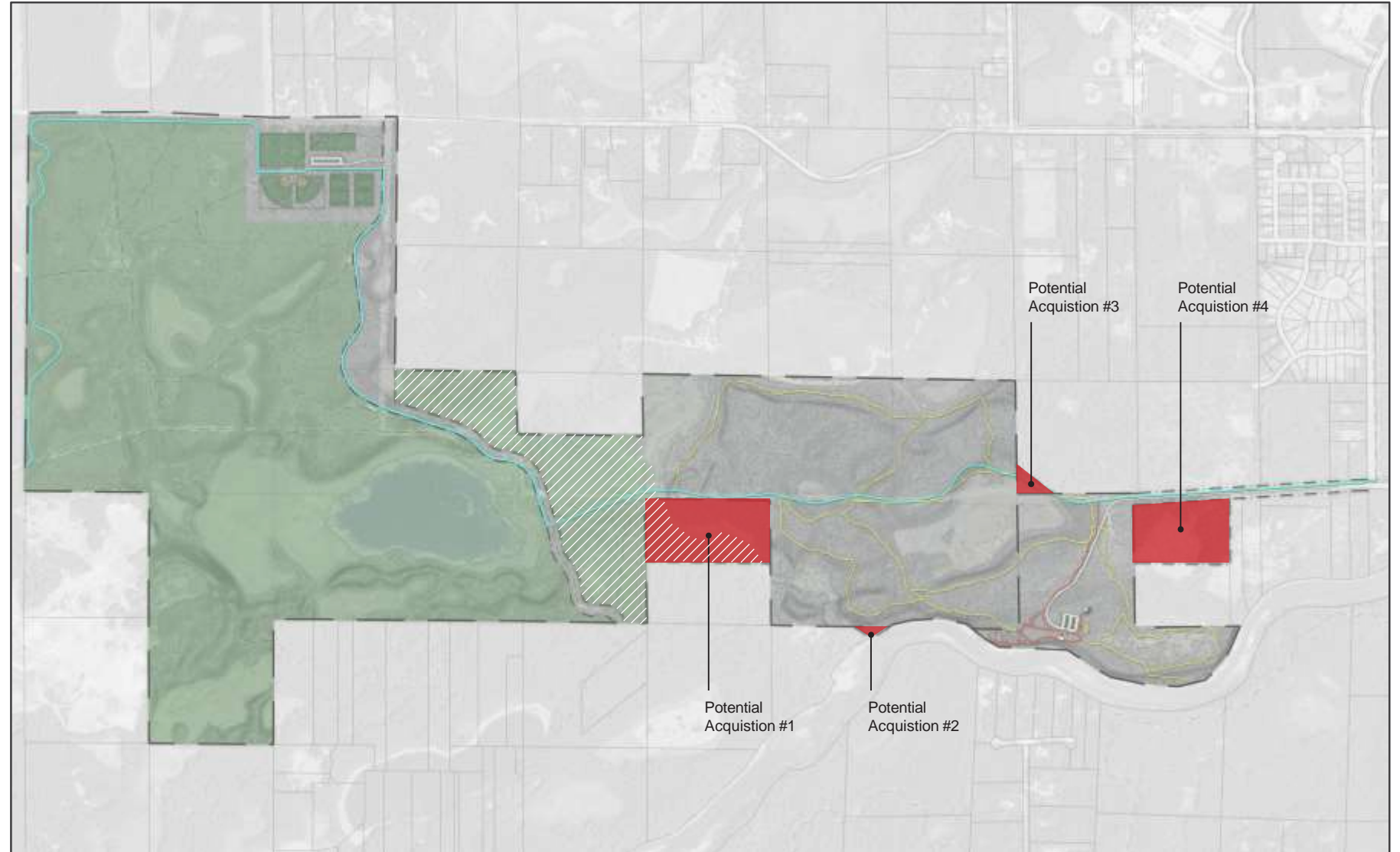
Chapter Highlights

- Description of Proposed Acquisitions

Chapter 10: ADA

Chapter Highlights

- Description of Americans with Disabilities Act (ADA) Requirements and Implementation Strategy



Next Steps For Master Plan Document

Mississippi River Overlook Park

Chapter 11: Future Maintenance Costs

- Identify and calculate future maintenance costs.

Chapter 12: Staging

- Prepare a staging plan for park development and incorporate anticipated costs for each state of development.

Chapter 13: Cost Estimates

- Prepare a cost estimate for the Preferred Alternative park plan.

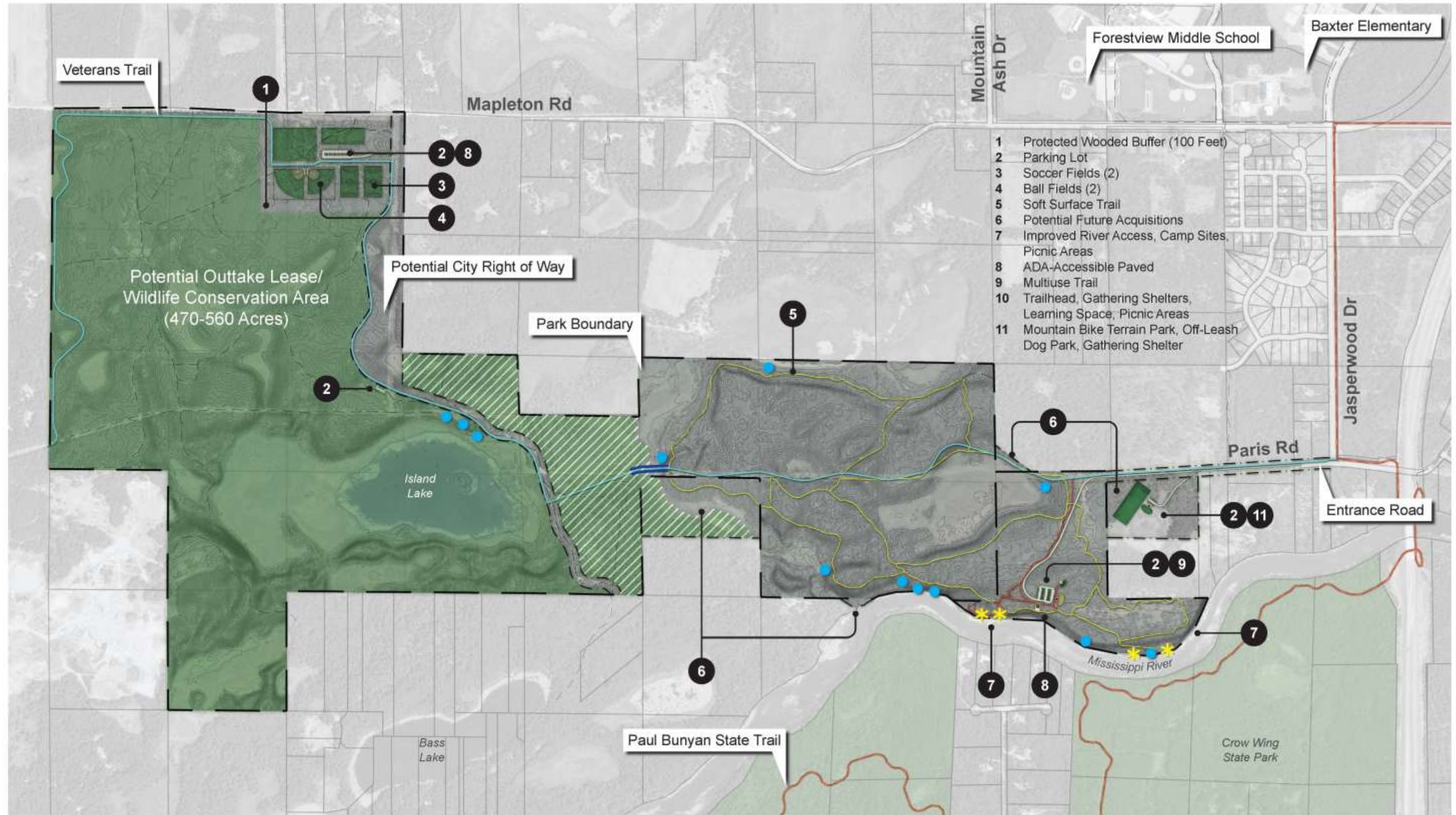
Chapter 14: Funding Implementation Strategy

- Provide input on potential grant opportunities for future park development.



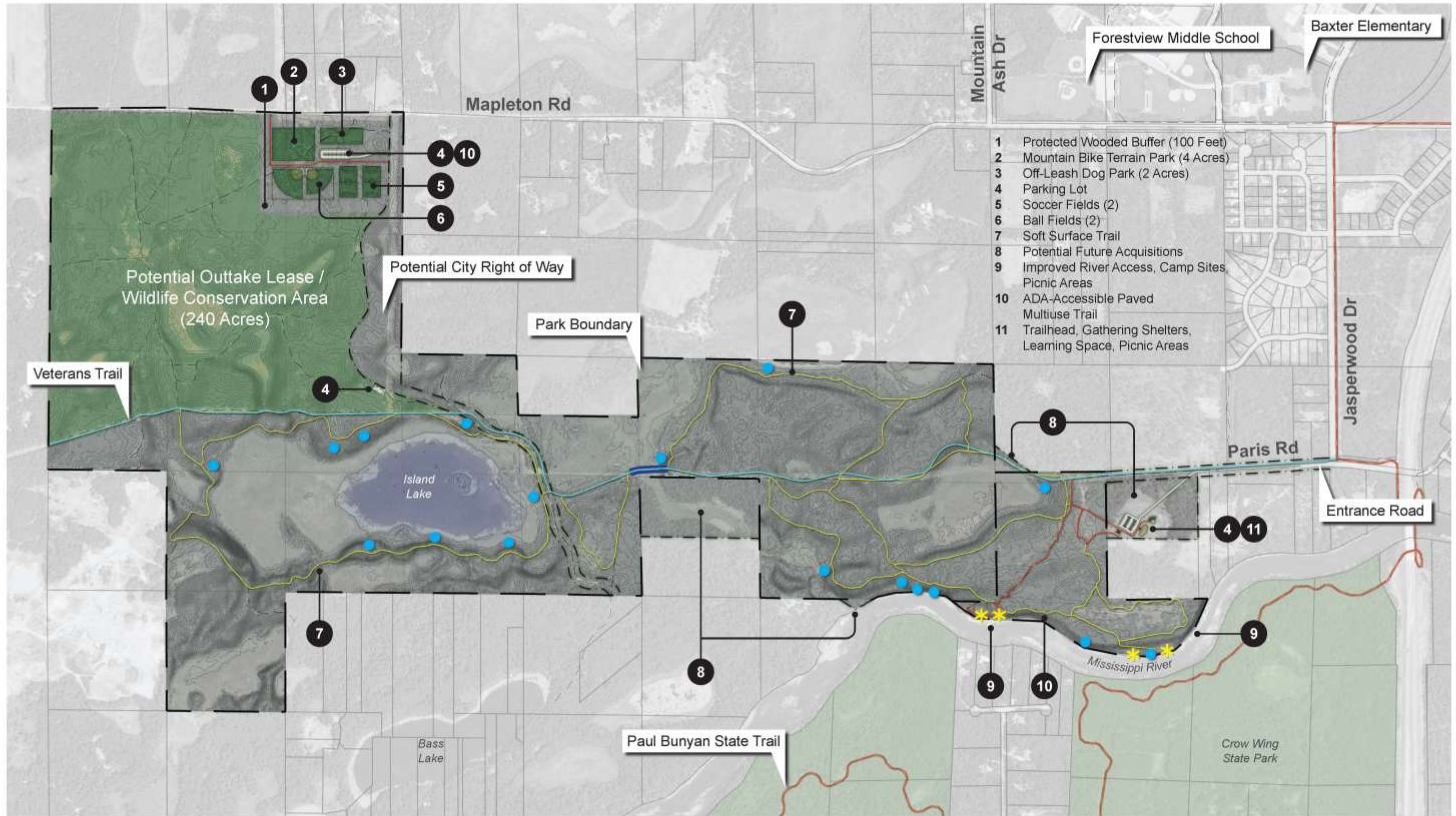
Option A

Mississippi River Overlook Park



Option B

Mississippi River Overlook Park



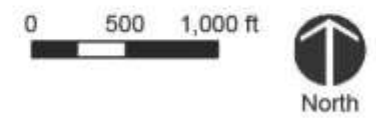
Preferred Alternative (Option A)

Mississippi River Overlook Park



City of Baxter

- River Access, Camping, and Picnicking Opportunities
- Overlook Areas
- Veterans Trail Bridge
- Outtake or City Property
- Unpaved Trail
- Paved Multiuse Trail
- Veterans Trail
- Wildlife Conservation Area
- Recreational Fields



A scenic view of a river flowing through a lush green park. The river is in the foreground, reflecting the surrounding greenery. In the background, there are many trees with vibrant green and yellow leaves, suggesting an autumn setting. A picnic table is visible on the right side of the image. The overall atmosphere is peaceful and natural.

**City of Baxter
Mississippi River
Overlook Park
Master Plan**