

Annual Progress Report
on the 2021 Stormwater
Permit Activities

June 7, 2022

City of Baxter

Status of Compliance with the MS₄ permit conditions.

Appropriateness of the Best Management Practices (BMPs).

Progress toward achieving Measurable Goals (MGs).

Educate the public on the importance of stormwater management.

Opportunity for public to comment on the SWPPP or implementation procedures.

Annual Report Requirements

Who Does this Work?

- City Staff
 - Public Works Employees
 - Park & Trails Employees
 - GIS/IS Department
 - Brainerd Fire Department
 - Police Department
 - City Planner
 - Building Official
- Partner Organizations
 - Crow Wing County
 - Crow Wing Power Green Touch Program
 - CWC Soil & Water
 - Mississippi Headwaters Board
 - Northland Arboretum
 - Individual Volunteers

Stormwater Inventory

5 Lakes

256 Storm Ponds

22 Wetlands



Stormwater Mapping

86.1 miles of road
1824 storm drains
158 culverts





MCM No. 1 Public Education and Outreach

Informational handout at City Hall.

Educational articles on the City's website.

MCM No. 2
– Public
Participation
and
Involvement

Public meeting on the 2021 annual progress report. Public input encouraged.

Continuation of leaf drop off site in the spring and fall.

Used oil and antifreeze recycling site.

MCM No. 3 – Illicit Discharge Detection and Elimination

- An illicit discharge is any discharge to a municipal separate storm sewer system with the exception of:
 - ✓ Water from any roof.
 - ✓ Surface water runoff from natural precipitation or water obtained from the municipal water supply.
 - ✓ Water from a ground water sump pump.
 - ✓ Water from a footing around the foundation of a structure.



Improper perimeter control allowing for sediment to discharge offsite

MCM No. 4 – Construction Site Stormwater Runoff Control

10 Steps to Stormwater Pollution Prevention on Small Residential Construction Sites

Stormwater management on small residential construction sites need not be complicated.

1 Protect Any Areas Reserved for Vegetation or Infiltration and Preserve Existing Trees

If you will be installing infiltration-based features such as rain gardens or bioswales, make sure these areas are designated as off limits to avoid compaction.

Save time and money by preserving existing mature trees during construction. Preserving mature trees minimizes the amount of soil that needs to be stabilized once construction is complete, and minimizes the amount of runoff during and after construction activity.

2 Stockpile Your Soil

EPA's CGP requires operators to preserve native topsoil on site unless infeasible and protect all soil storage piles from run-on and runoff. For smaller stockpiles, covering the entire pile with a tarp may be sufficient.

3 Protect Construction Materials from Run-On and Runoff

At the end of every workday and during precipitation events, provide cover for materials that could leach pollutants.

4 Designate Waste Disposal Areas

Clearly identify separate waste disposal areas on site for hazardous waste, construction waste, and domestic waste by designating with signage, and protect from run-on and runoff.

5 Install Perimeter Controls on Downhill Lot Line

Install perimeter controls such as sediment filter logs or silt fences around the downhill boundaries of your site.

6 Install Inlet Controls

Sediment control logs, gravel barriers, and sand or rock bags are options for effective inlet controls. Make sure to remove accumulated sediment whenever it has reached halfway up the control.

7 Install a Concrete/Stucco Washout Basin

Designate a leak-proof basin lined with plastic for washing out used concrete and stucco containers. Never wash excess stucco or concrete residue down a storm drain or into a stream!

8 Maintain a Stabilized Exit Pad

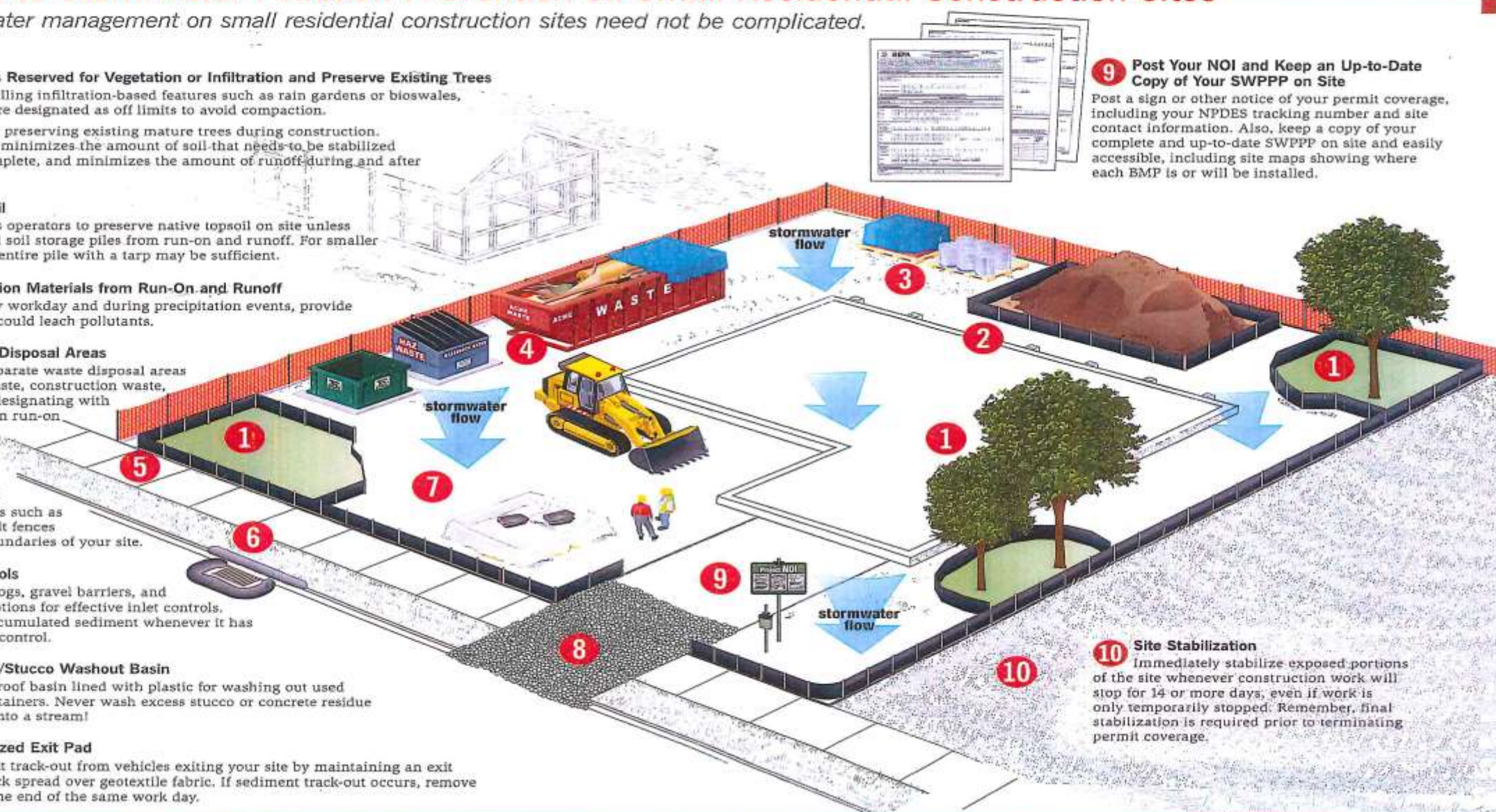
Minimize sediment track-out from vehicles exiting your site by maintaining an exit pad made of crushed rock spread over geotextile fabric. If sediment track-out occurs, remove deposited sediment by the end of the same work day.

9 Post Your NOI and Keep an Up-to-Date Copy of Your SWPPP on Site

Post a sign or other notice of your permit coverage, including your NPDES tracking number and site contact information. Also, keep a copy of your complete and up-to-date SWPPP on site and easily accessible, including site maps showing where each BMP is or will be installed.

10 Site Stabilization

Immediately stabilize exposed portions of the site whenever construction work will stop for 14 or more days, even if work is only temporarily stopped. Remember, final stabilization is required prior to terminating permit coverage.





MCM No. 5 – Post Construction Stormwater Management

Site plans required for post construction stormwater management BMPs.

Legal mechanism for permanent BMP maintenance.

MCM No. 6 – Pollution Prevention/Good Housekeeping for Municipal Operations

- Swept 86 miles of bituminous roadway.
- Work orders issued and completed for:
 - ✓ Storm sewers
 - ✓ Manholes
 - ✓ Ditches and drainage ways
 - ✓ Ponds
 - ✓ Brush, tree, and weed clearing

MCM 6
Good
Housekeeping



Stormwater Pond No. 086 Cleaning

Stormwater Pond Protection During
Construction



MS4 Permit



```
graph TD; A[MS4 Permit] --> B[Existing permit was effective March 2013]; B --> C[The new updated 5-year permit will be issued in 2021.]; C --> D[More inspections and documentation required than 2008/2013 MS4 Permit]; D --> E[Educate the public on the importance of stormwater management.];
```

Existing permit was effective March 2013

The new updated 5-year permit will be issued in 2021.

More inspections and documentation required than 2008/2013 MS4 Permit

Educate the public on the importance of stormwater management.

How Can You Get Involved?

Pass on information about the storm water program to other community residents.

Report any storm water issues to:
City of Baxter
Public Works Department
(218) 454-5115
E-mail: publicworks@baxtermn.gov

