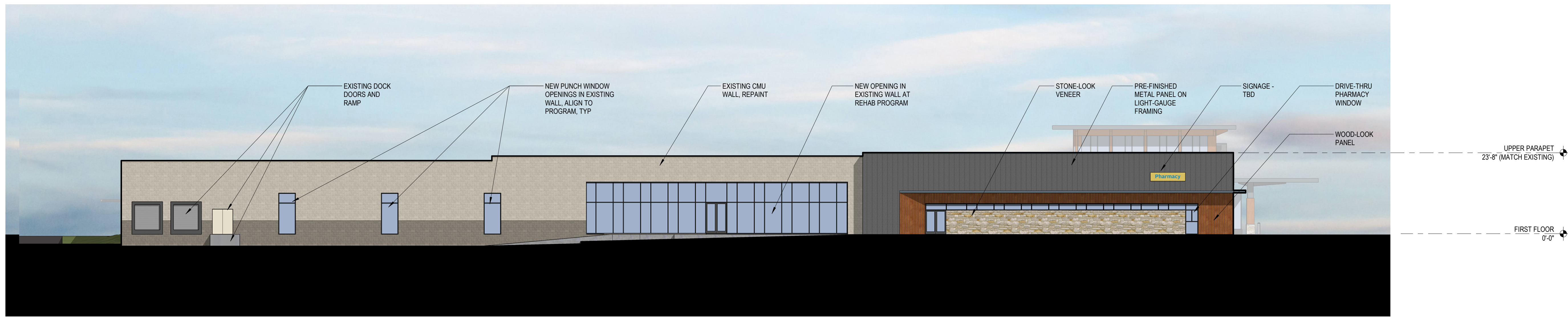
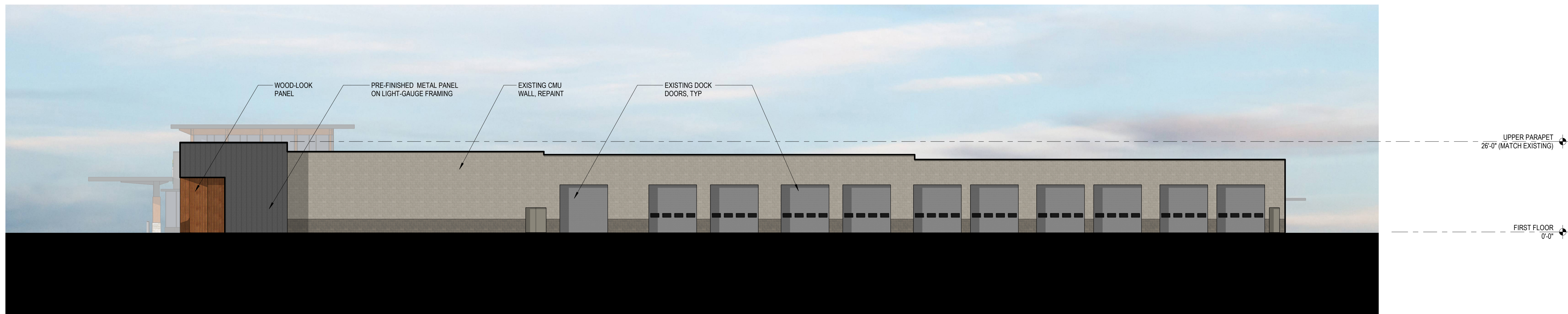


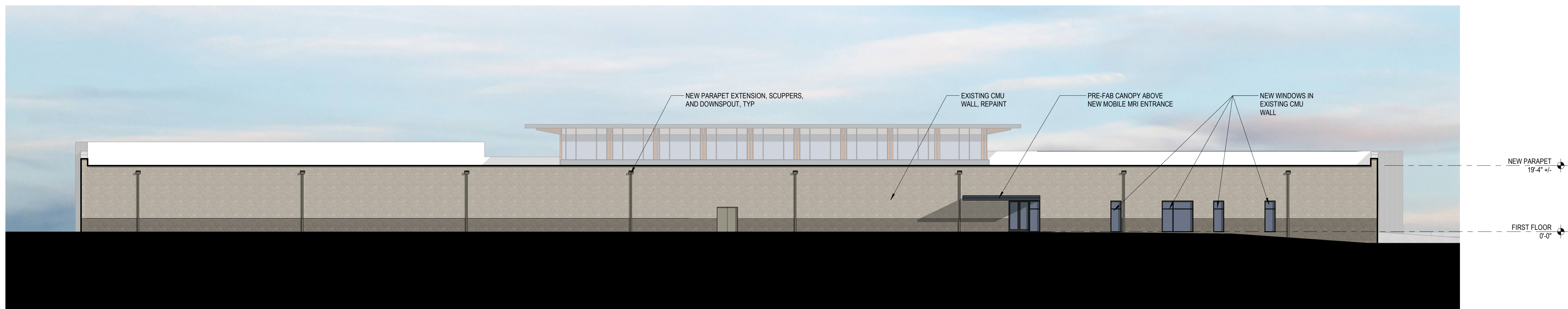
1 EAST ELEVATION  
1/16" = 1'-0"



2 SOUTH ELEVATION  
1/16" = 1'-0"



3 NORTH ELEVATION  
1/16" = 1'-0"



4 WEST ELEVATION  
1/16" = 1'-0"

DATE	REV	REVISION DESCRIPTION

DATE:	SEPT. 24, 2024
SCALE:	AS NOTED
DRAWN BY:	JAR
CHECKED BY:	JAR
JOB NUMBER:	202411581





1 AERIAL PERSPECTIVE  
1/2" = 1'-0"



2 PERSPECTIVE  
1/2" = 1'-0"

DATE	BY	REVISION DESCRIPTION

DATE:	SEPT. 24, 2024
SCALE:	AS NOTED
DRAWN BY:	JAR
CHECKED BY:	JAR
JOB NUMBER:	202411581