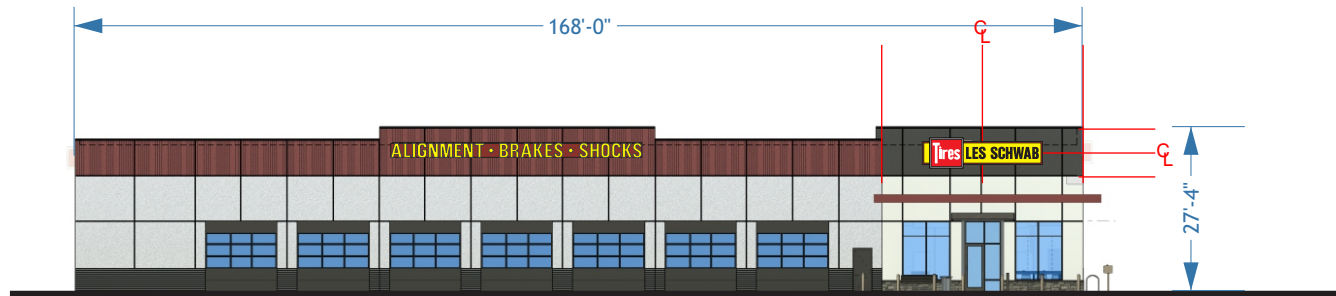
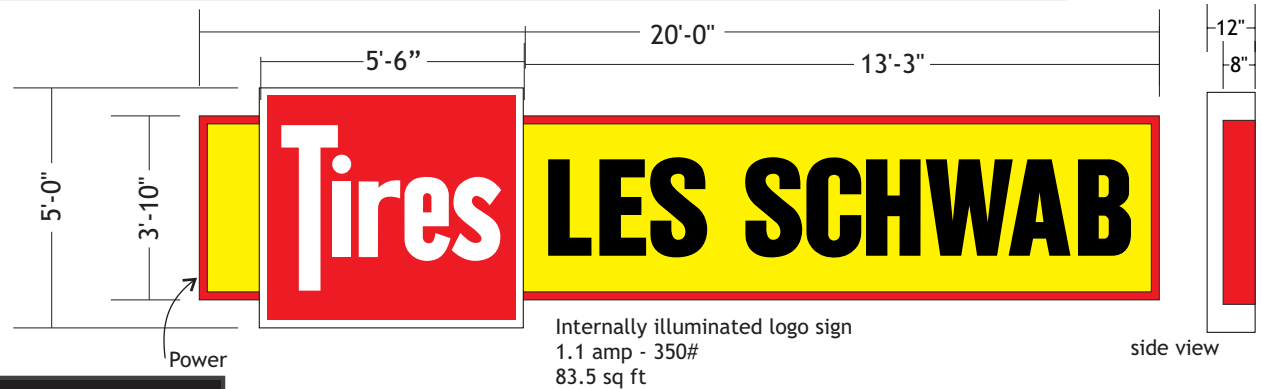
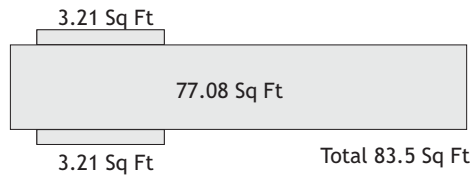


Sign B



SOUTH ELEVATION - SCALE: 1/32" = 1'-0"



"Tires" section (white)

L2X2 bolted to top & bottom of cabinet

field attachments

"Les Schwab" section (red)

Formed Logo Attachment Detail

Cont. 2"x2"x.25" alum. angle hang rail (integral to sign frame)
Field attach 3/8" Hilti Kuik Bolt Tz2 3/8" X 2-1/2 anchors installed for hollow conditions 6" from edge of sign and along top & bottom of sign at 4' intervals into precast concrete. Seal penetrations w/ EIFS approved sealant if installed on EIFS

Extruded sign frame (red)
sign face
.063 alum. sign back
Metal panel facade

Calculations:

Allowed Signage - 10% of wall (27'x168') = 453 sq ft available
Proposed Signage - 83.5sf

ELECTRICAL CABINET DETAIL

ITEM	SUBSTRATE	COLOR SPECIFICATION
Cabinet	Aluminum	LS Red
Illumination	LED	White
Faces	3/16" acrylic	Acrylite 432 Yellow / White
Copy	Vinyl	3M High Performance Black 3M Cardinal 230-53

Location: LSTC MN Baxter

Proj Mgr:

File Name: LSTC MN BaxterElevs

Scale: 1/4" = 1'

Dwg By: Darryl Cox

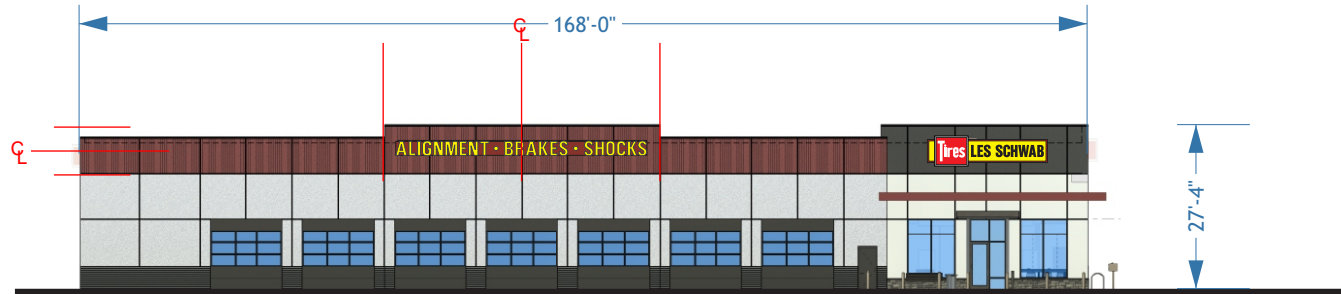
Date: 6/4/25
Rev.
Rev.

1605 NE Forbes Rd.
Bend, Oregon 97709

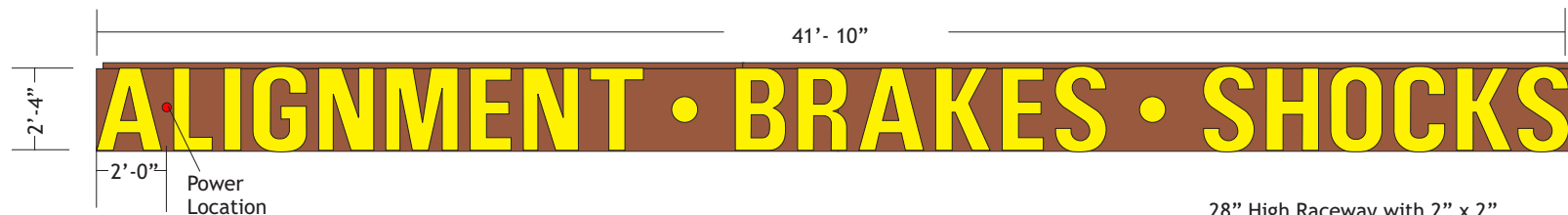


PH (541) 382-2182
FAX (541) 382-2196

Sign C

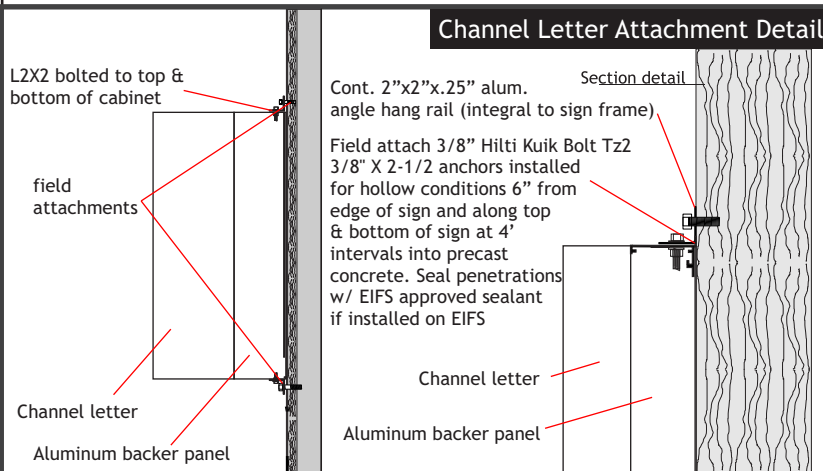


SOUTH ELEVATION - SCALE: 1/32" = 1'-0"



28" High Raceway with 2" x 2"
Angle Iron Mounting Bracket
Scale 3/16" = 1' - 97.6 sq ft
1.1 amp - 399#

side view



Calculations:
Allowed Signage - 10% of wall (27'x168') = 453 sq ft available
Proposed Signage - 83.5sf

28" INDIVIDUAL CHANNEL LETTERS

ITEM	SUBSTRATE	COLOR
Returns	.040 aluminum	Black
Trimcap	1"	Black
Faces	3/16" Acrylic	Acrylite 432-2 Yellow
Illumination	LED	White
Raceway	24 gauge galv. shtmtl.	MP 15967 Colonial Red

Location: LSTC MN Baxter

Proj Mgr:

File Name: LSTC MN BaxterElevs

Scale: 1/4" = 1'

Dwg By: Darryl Cox

Date: 6/4/25

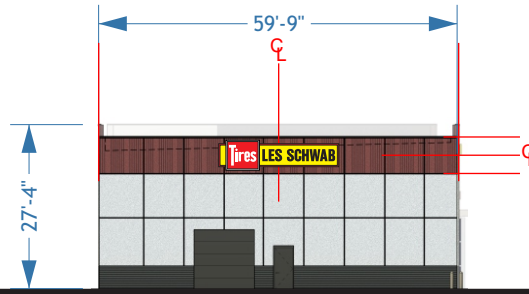
Rev.
Rev.

1605 NE Forbes Rd.
Bend, Oregon 97709

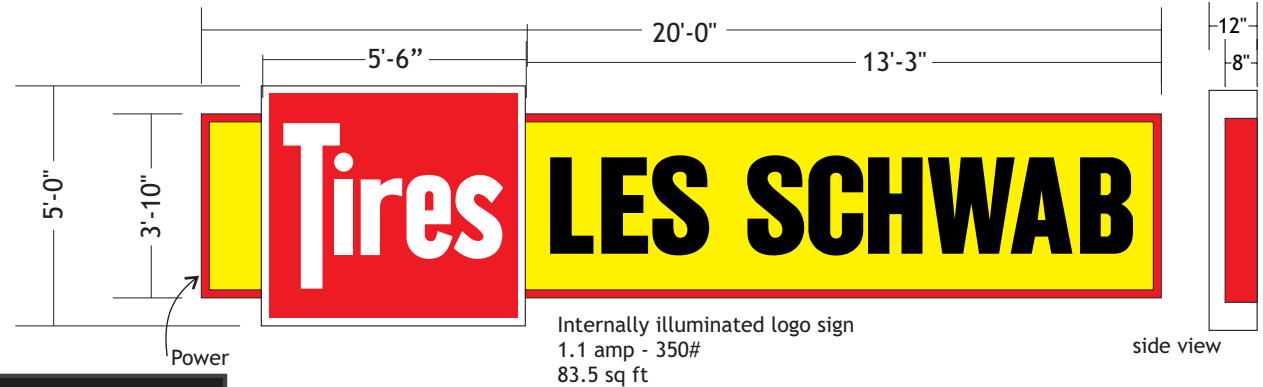
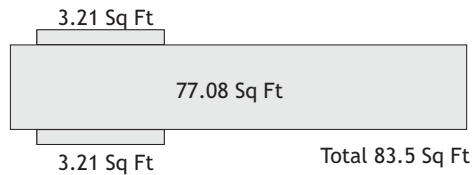


PH (541) 382-2182
FAX (541) 382-2196

Sign D



WEST ELEVATION - SCALE: 1/32" = 1'-0"



"Tires" section (white)
L2X2 bolted to top & bottom of cabinet

field attachments

"Les Schwab" section (red)

Formed Logo Attachment Detail

Cont. 2"x2"x.25" alum. angle hang rail (integral to sign frame)
Field attach 3/8" Hilti Kuik Bolt Tz2 3/8" X 2-1/2 anchors installed for hollow conditions 6" from edge of sign and along top & bottom of sign at 4' intervals into precast concrete. Seal penetrations w/ EIFS approved sealant if installed on EIFS

Extruded sign frame (red)
sign face
.063 alum. sign back
Metal panel facade

Calculations:

Allowed Signage - 10% of wall (27'x168') = 453 sq ft available
Proposed Signage - 83.5sf

ELECTRICAL CABINET DETAIL

ITEM	SUBSTRATE	COLOR SPECIFICATION
Cabinet	Aluminum	LS Red
Illumination	LED	White
Faces	3/16" acrylic	Acrylite 432 Yellow / White
Copy	Vinyl	3M High Performance Black 3M Cardinal 230-53

Location: LSTC MN Baxter

Proj Mgr:

File Name: LSTC MN BaxterElevs

Scale: 1/4" = 1'

Dwg By: Darryl Cox

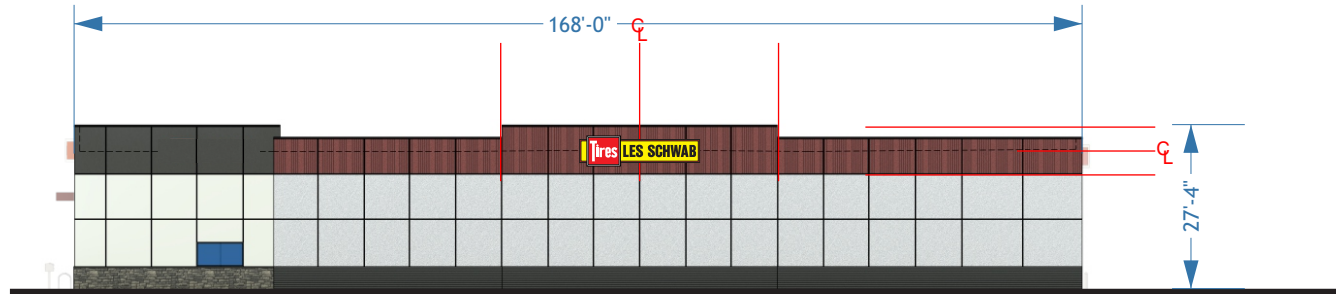
Date: 6/4/25
Rev.
Rev.

1605 NE Forbes Rd.
Bend, Oregon 97709

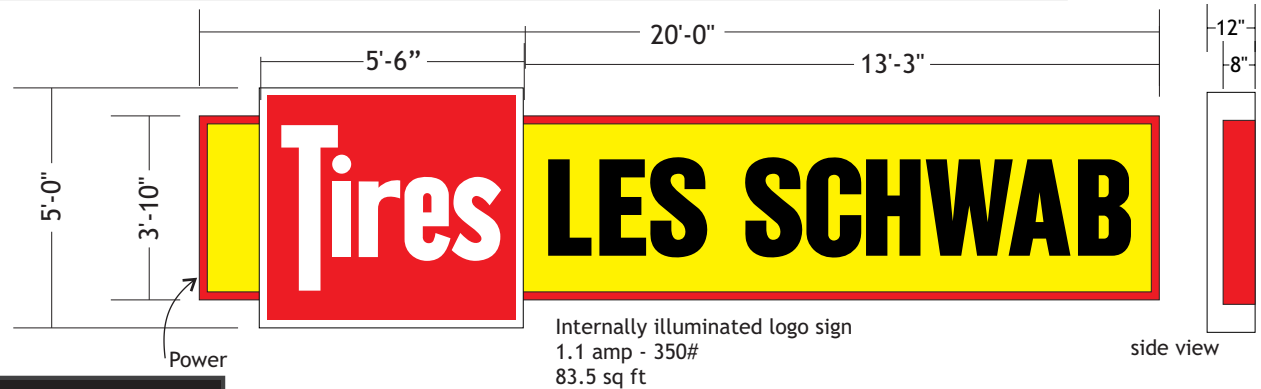
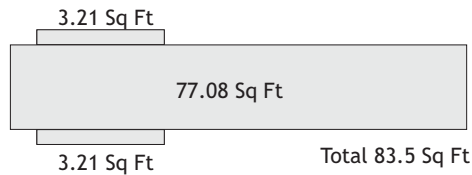


PH (541) 382-2182
FAX (541) 382-2196

Sign E



SOUTH ELEVATION - SCALE: 1/32" = 1'-0"



"Tires" section (white)

L2X2 bolted to top & bottom of cabinet

field attachments

"Les Schwab" section (red)

Formed Logo Attachment Detail

Cont. 2"x2"x.25" alum. angle hang rail (integral to sign frame)
Field attach 3/8" Hilti Kuik Bolt Tz2 3/8" X 2-1/2 anchors installed for hollow conditions 6" from edge of sign and along top & bottom of sign at 4' intervals into precast concrete. Seal penetrations w/ EIFS approved sealant if installed on EIFS

Extruded sign frame (red)
sign face
.063 alum. sign back
Metal panel facade

Calculations:

Allowed Signage - 10% of wall (27'x168') = 453 sq ft available
Proposed Signage - 83.5sf

ELECTRICAL CABINET DETAIL

ITEM	SUBSTRATE	COLOR SPECIFICATION
Cabinet	Aluminum	LS Red
Illumination	LED	White
Faces	3/16" acrylic	Acrylite 432 Yellow / White
Copy	Vinyl	3M High Performance Black 3M Cardinal 230-53

Location: LSTC MN Baxter

Proj Mgr:

File Name: LSTC MN BaxterElevs

Scale: 1/4" = 1'

Dwg By: Darryl Cox

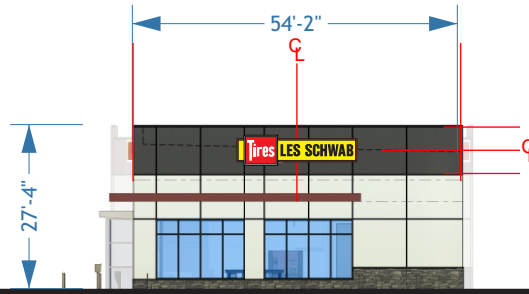
Date: 6/4/25
Rev.
Rev.

1605 NE Forbes Rd.
Bend, Oregon 97709

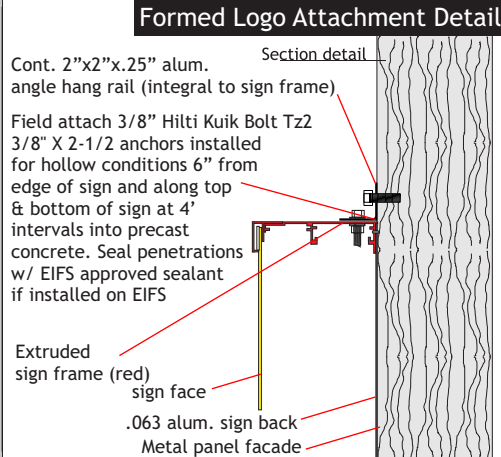
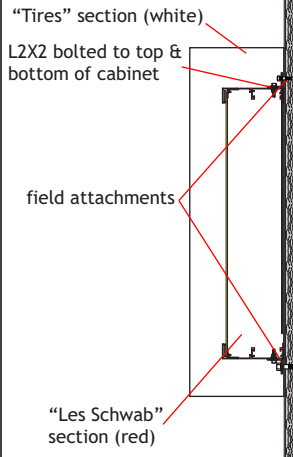
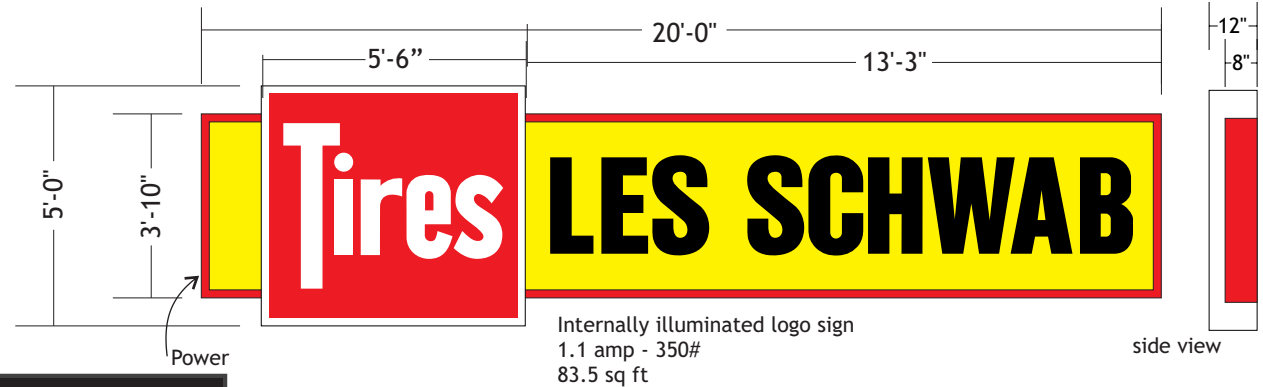
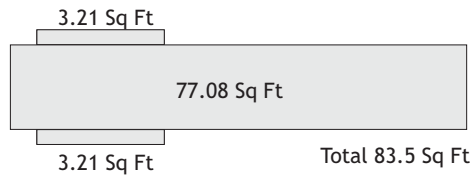


PH (541) 382-2182
FAX (541) 382-2196

Sign F



WEST ELEVATION - SCALE: 1/32" = 1'-0"



Calculations:
Allowed Signage - 10% of wall (27'x168') = 453 sq ft available
Proposed Signage - 83.5sf

ELECTRICAL CABINET DETAIL

ITEM	SUBSTRATE	COLOR SPECIFICATION
Cabinet	Aluminum	LS Red
Illumination	LED	White
Faces	3/16" acrylic	Acrylite 432 Yellow / White
Copy	Vinyl	3M High Performance Black 3M Cardinal 230-53

Location: LSTC MN Baxter
Proj Mgr:
File Name: LSTC MN BaxterElevs
Scale: 1/4" = 1'
Dwg By: Darryl Cox
Date: 6/4/25
Rev.

1605 NE Forbes Rd.
Bend, Oregon 97709



PH (541) 382-2182
FAX (541) 382-2196