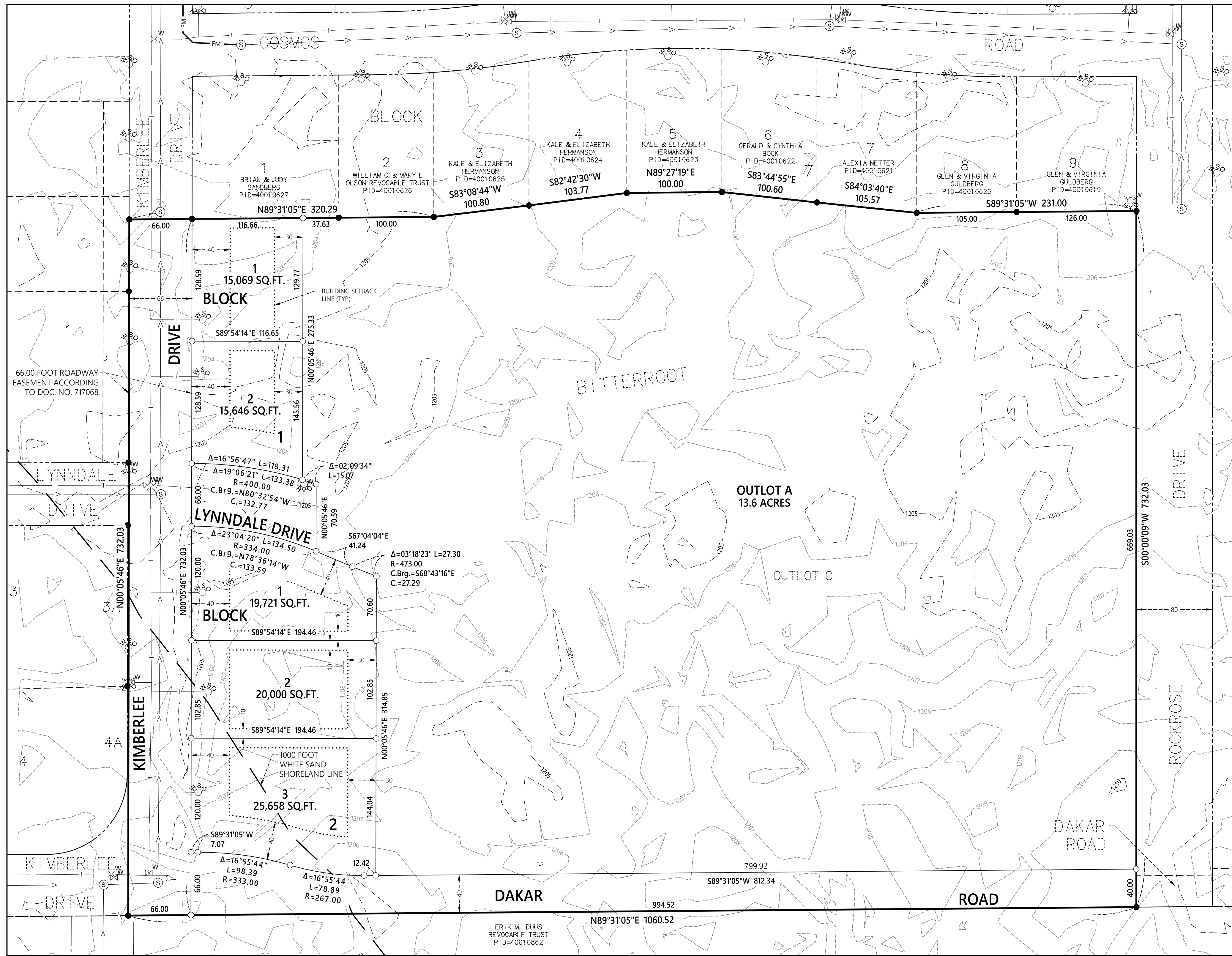


# BITTERROOT SECOND ADDITION



## PRELIMINARY PLAT NOTES

### OWNER/DEVELOPER

DAVID SCHULTZ  
7563 70TH AVE  
BRainerd, MN 56401

### LAND SURVEYOR

CURTIS P. SANOW  
WIDSETH  
7804 INDUSTRIAL PARK RD  
BAXTER, MN 56425

### PROPERTY LEGAL DESCRIPTION

OUTLOT C, BITTERROOT, SECTION 1,  
TOWNSHIP 133, RANGE 29, CROW WING  
COUNTY, MINNESOTA

### AREA

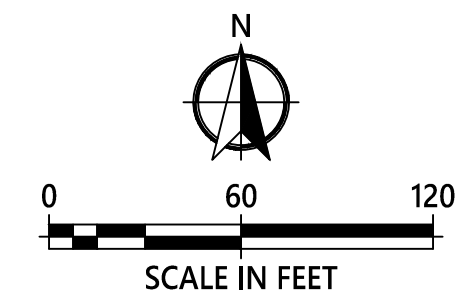
18.0 ACRES, MORE OR LESS

### ZONING

R-1, LOW DENSITY RESIDENTIAL

### DATE

AUGUST 1, 2025

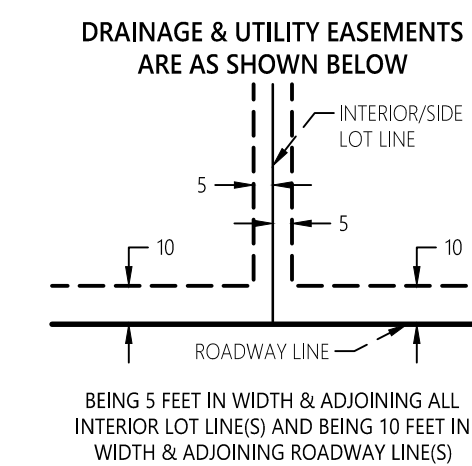
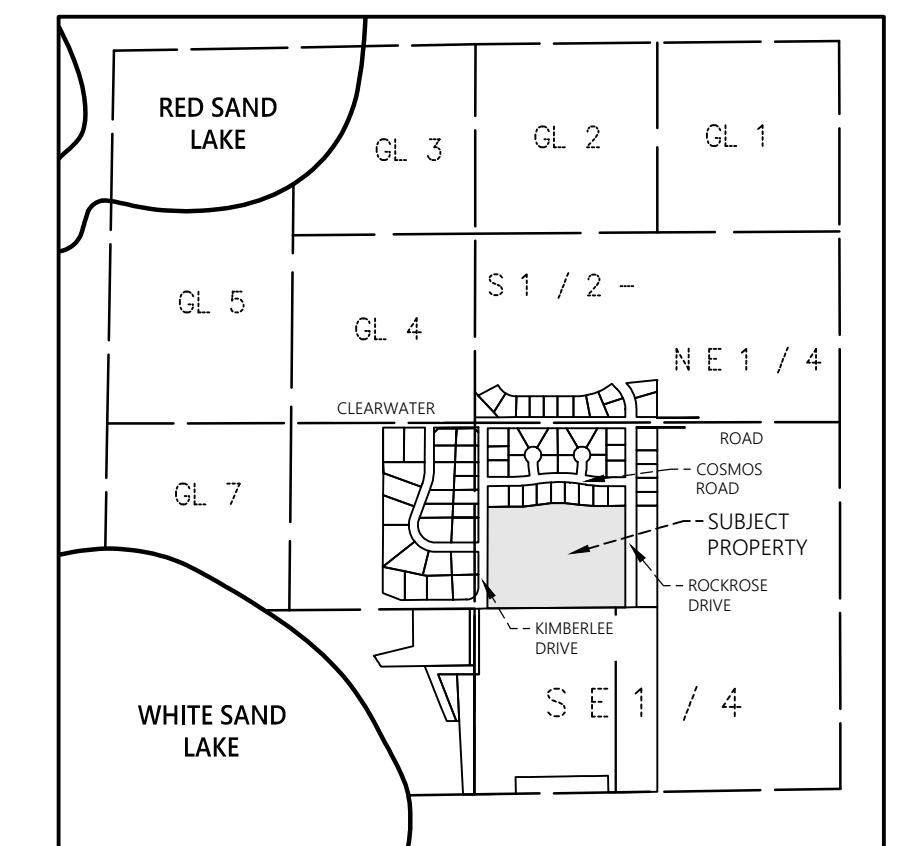


ORIENTATION OF THIS BEARING SYSTEM IS  
BASED ON THE CITY OF BAXTER  
COORDINATE DATABASE NAD 83

ELEVATIONS ARE BASED ON THE NATIONAL  
GEODETIC VERTICAL DATUM OF 1929

- DENOTES FOUND IRON MONUMENT
- DENOTES 1/2 INCH DIAMETER BY 18 INCH  
LONG IRON PIPE SET AND MARKED BY  
RLS # 59005
- ⊙ SANITARY MANHOLE
- ⊕ HYDRANT
- ⊗ WATER MAIN VALVE
- WCS
- CURB STOP
- SANITARY SEWER LINE
- WATER MAIN

## VICINITY MAP (NOT TO SCALE)



## SURVEY NOTES

88 DATUM.

- The elevations as shown are from Minnesota State LIDAR bare earth points, NGVD 29 datum.
- The underground utilities shown on this survey are according to plans. Widseth assumes no responsibility for the completeness and accuracy of these locations. Further locations and verifications are recommended before any construction or excavation.