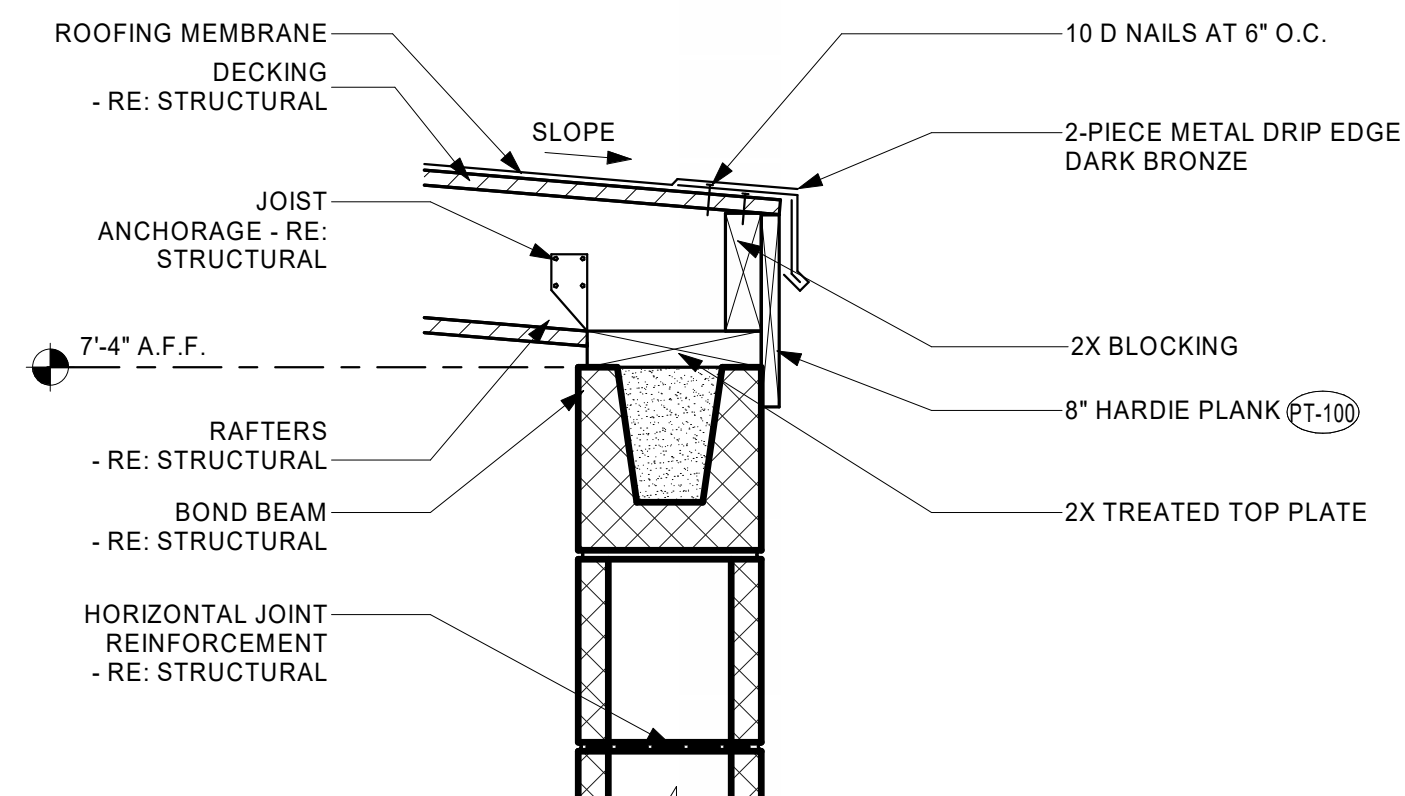
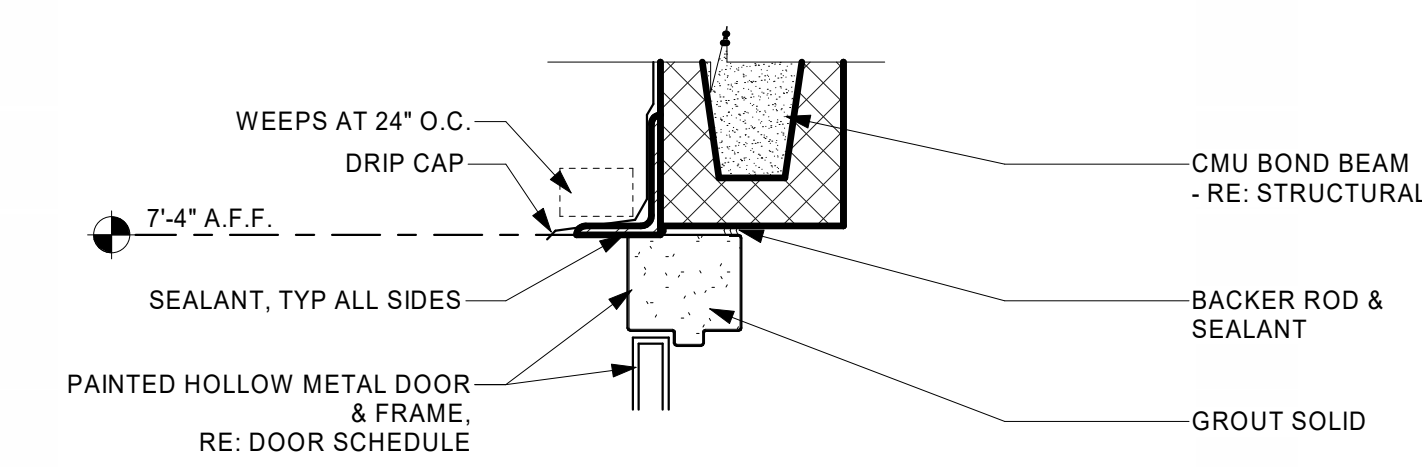


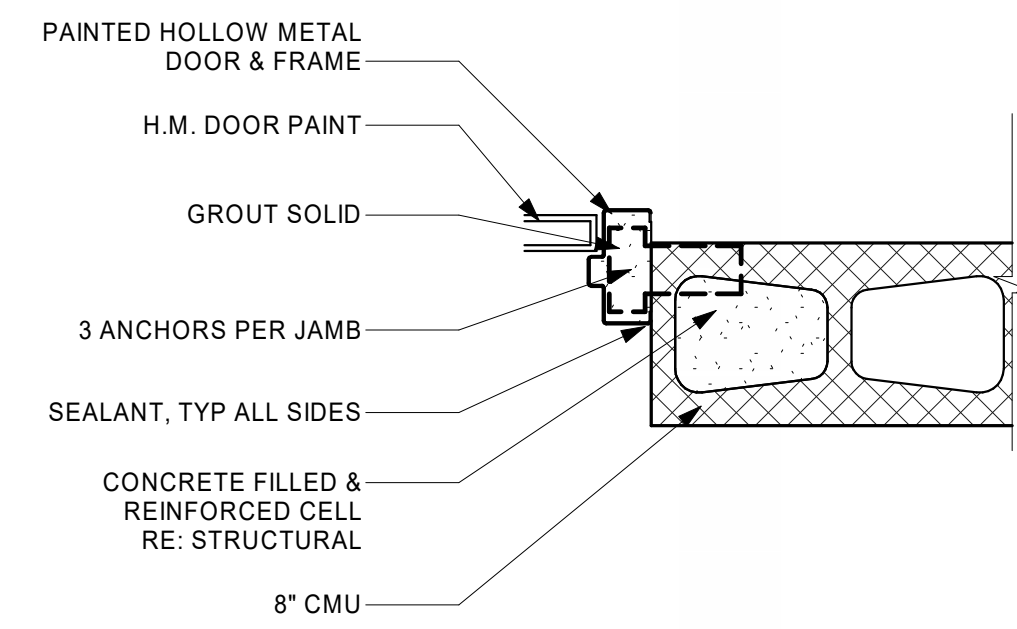
E3 REFUSE ENCLOSURE ROOF EDGE DETAIL  
1 1/2" = 1'-0"



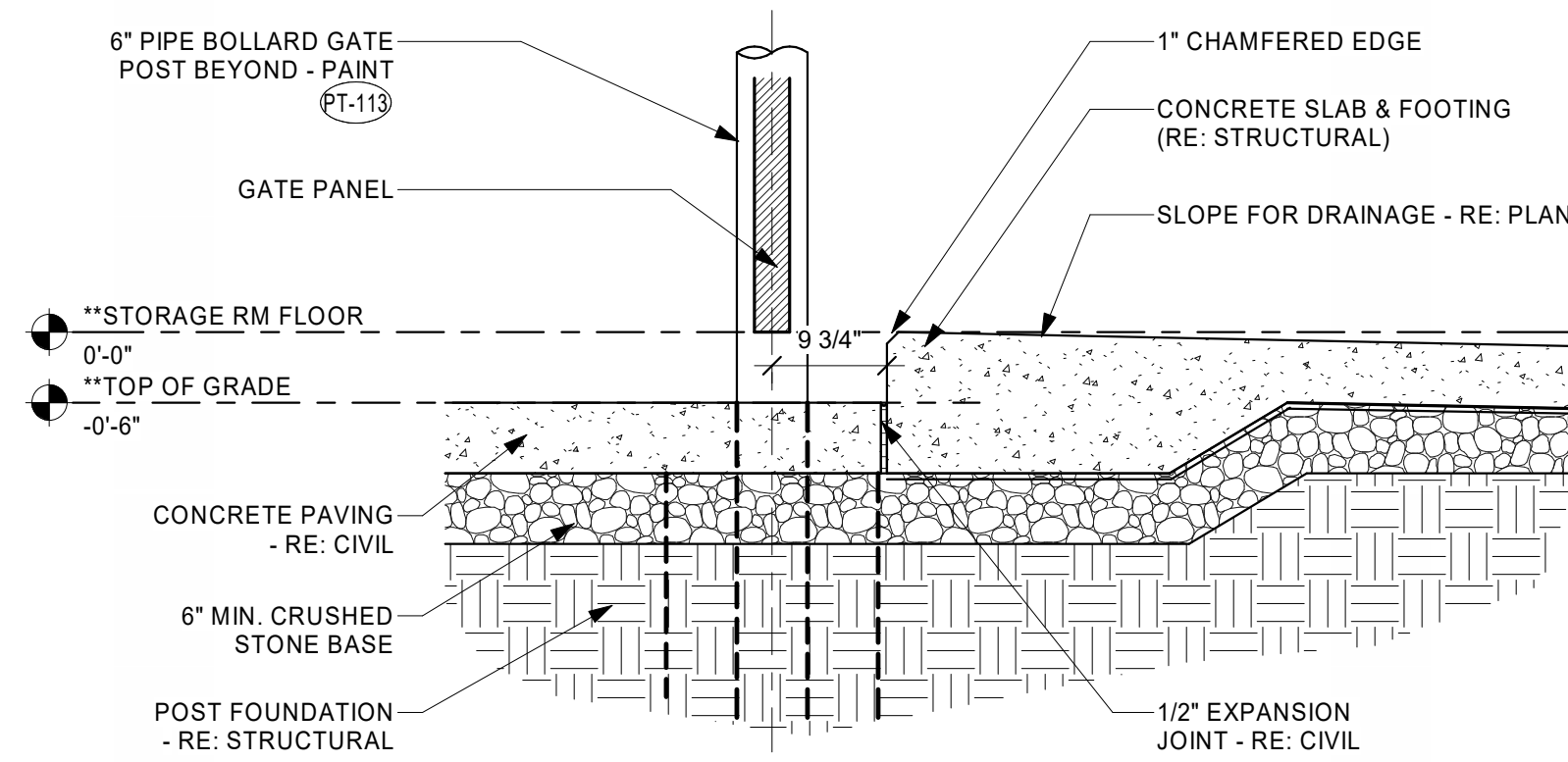
E2 REFUSE ENCLOSURE DRIP EDGE  
1 1/2" = 1'-0"



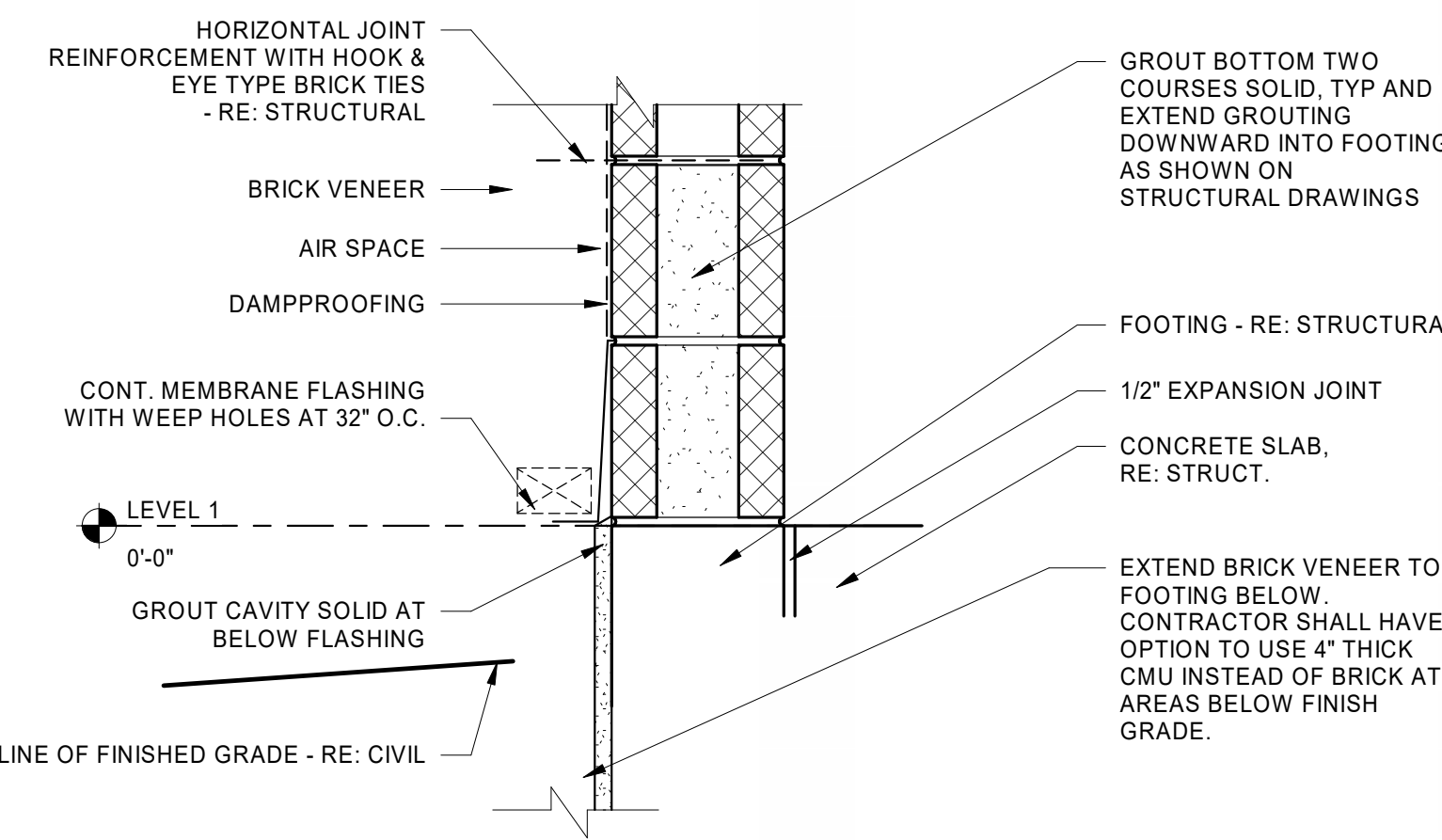
D3 REFUSE ENCLOSURE DOOR HEAD DETAIL  
1 1/2" = 1'-0"



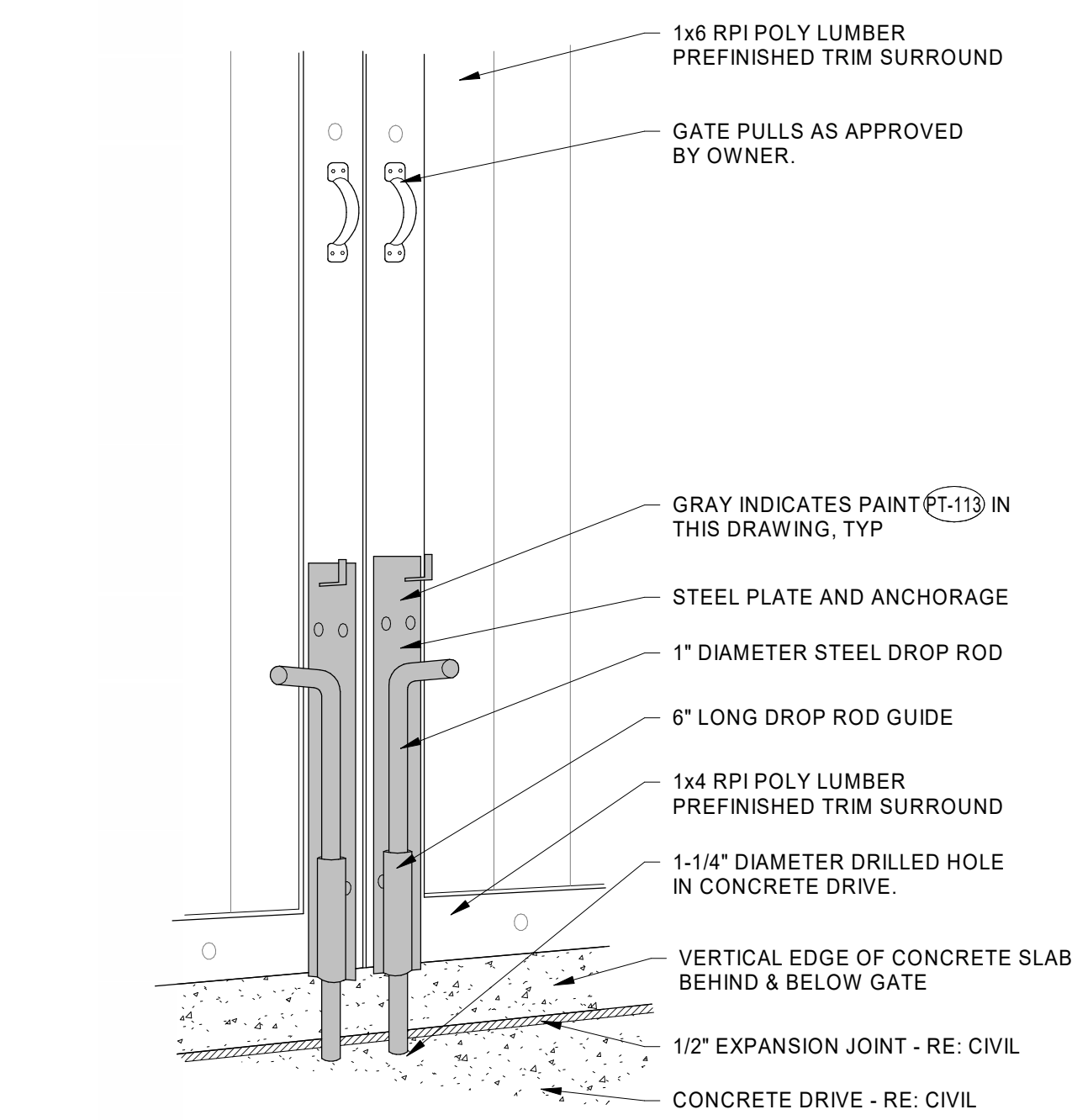
D2 REFUSE ENCLOSURE DOOR JAMB DETAIL  
1 1/2" = 1'-0"



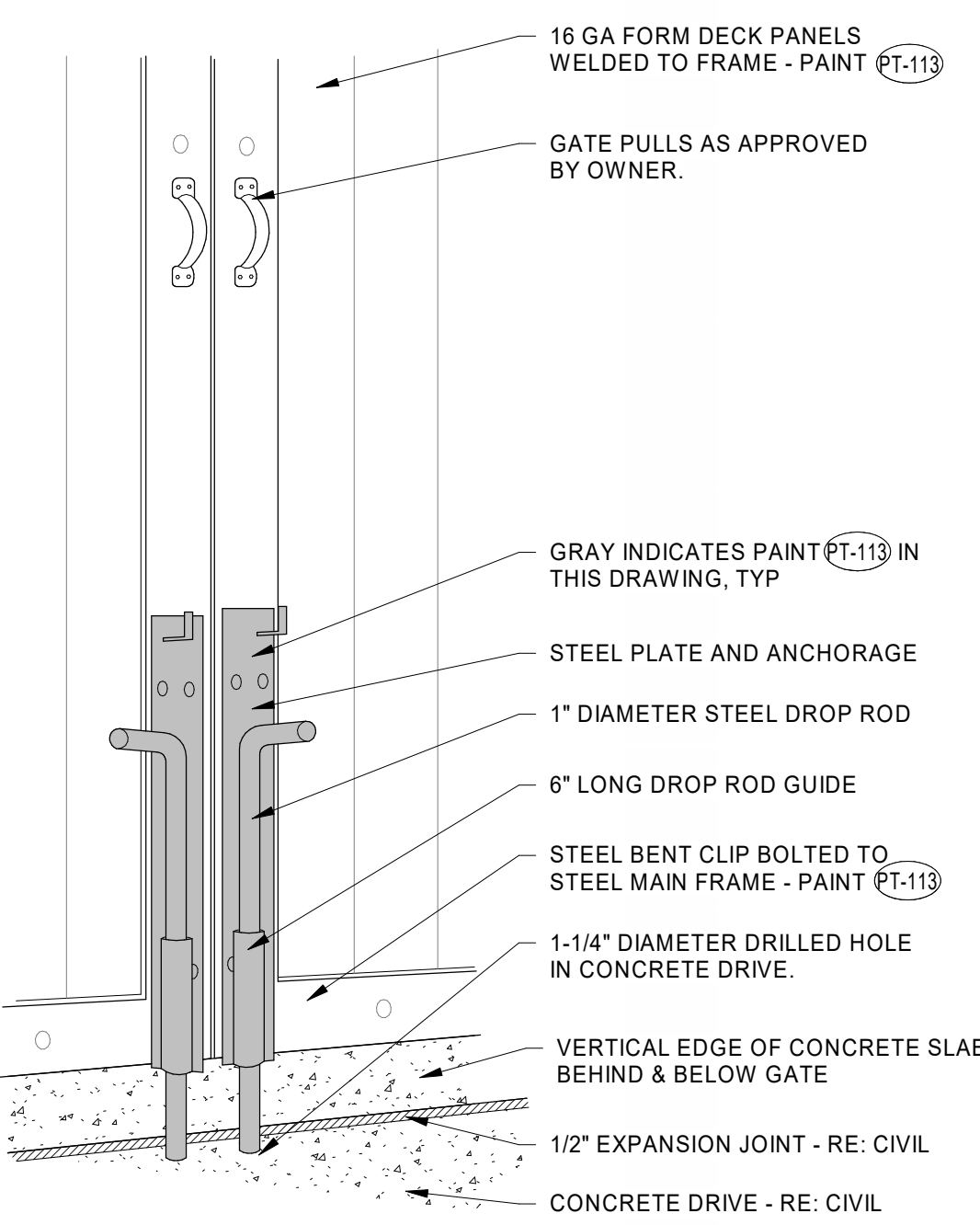
C4 REFUSE PAD AT CONCRETE PAVING DETAIL  
3/4" = 1'-0"



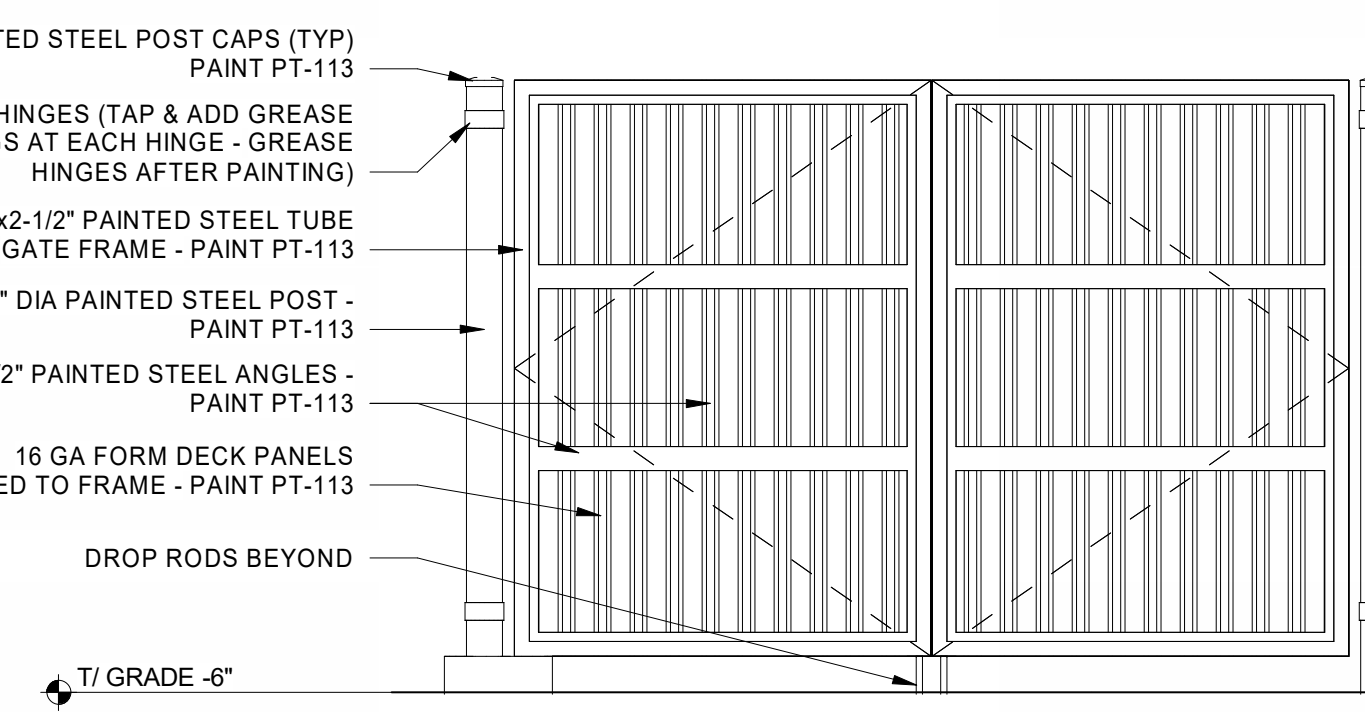
C3 REFUSE ENCLOSURE BASE DETAIL  
1 1/2" = 1'-0"



A4 REFUSE ENCLOSURE DROP ROD 3-D RPI POLY LUMBER DETAIL  
1/2" = 1'-0"



A3 REFUSE ENCLOSURE DROP ROD 3-D DECK PANEL DETAIL  
1/2" = 1'-0"

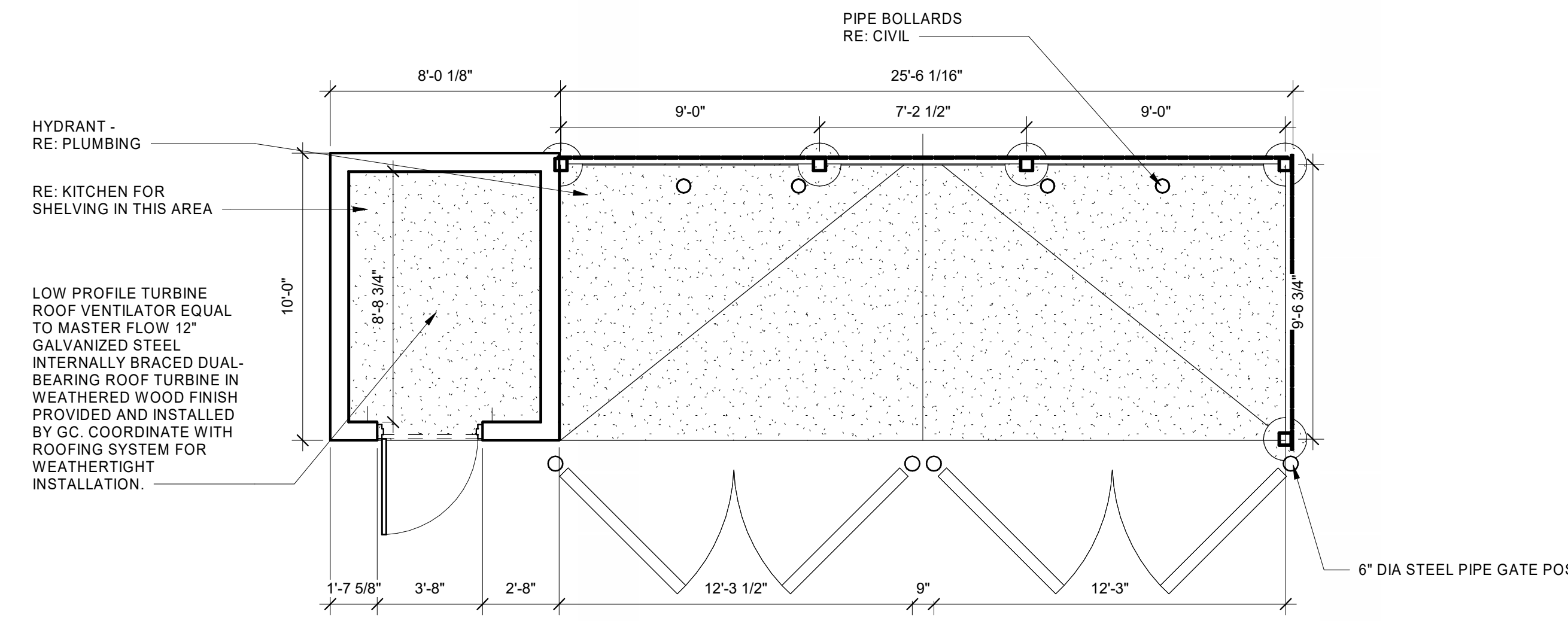


B2 REFUSE ENCLOSURE GATE REAR ELEVATION  
3/8" = 1'-0"

REF FINISH LEGEND  
12" = 1'-0"

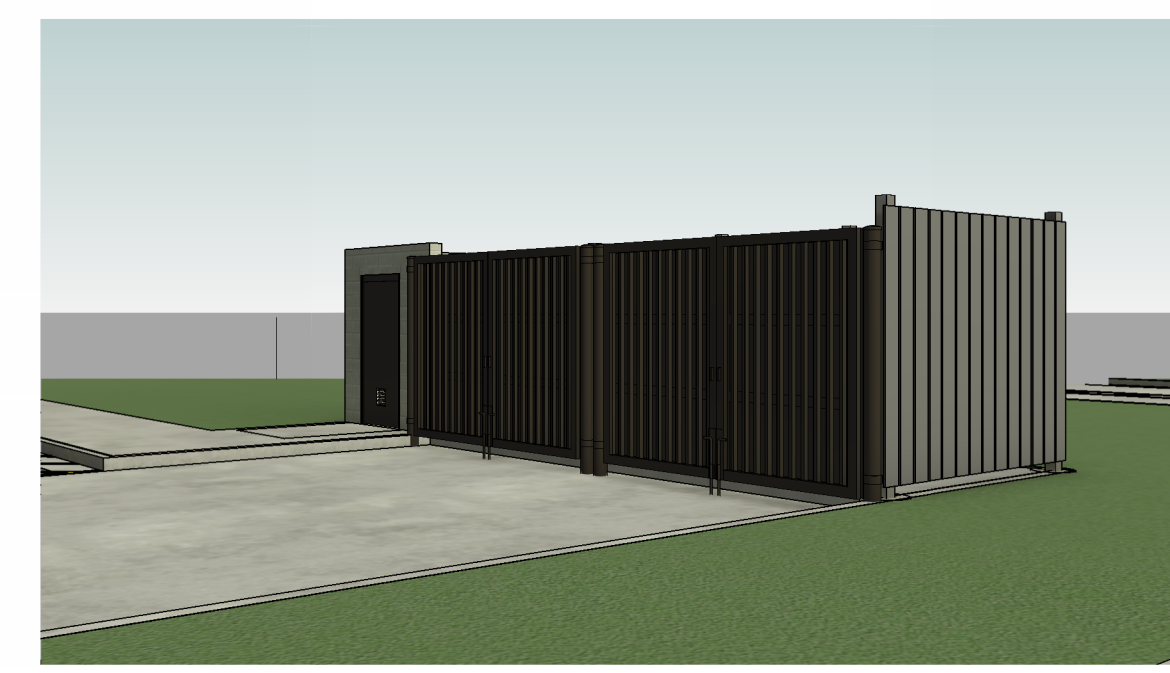


D1 REFUSE ENCLOSURE PLAN  
1/4" = 1'-0"

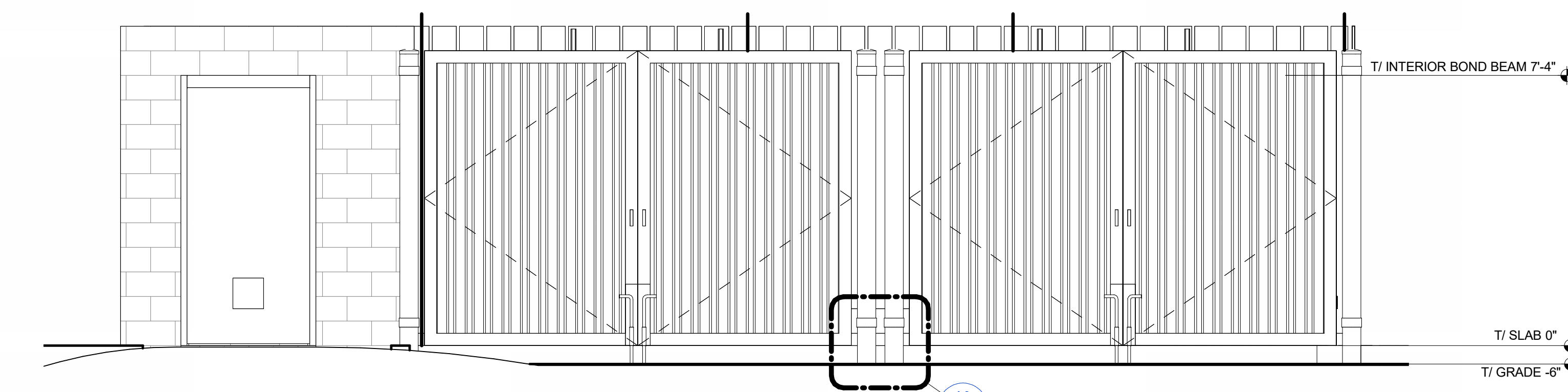


REFUSE ENCLOSURE NOTES

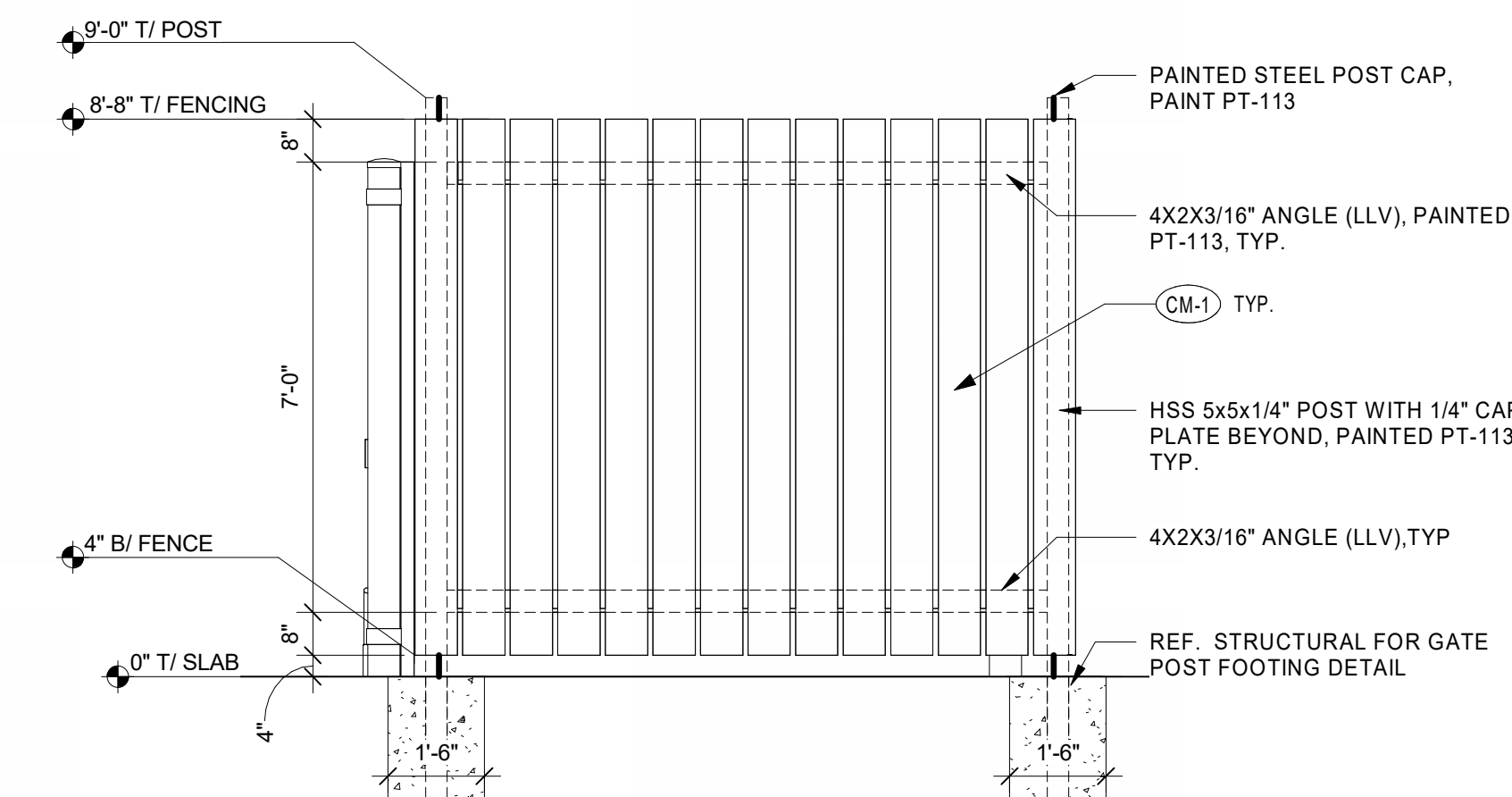
1. \*\* IN THE ARCHITECTURAL DRAWINGS, REFUSE ENCLOSURE AND MAIN BUILDING ARE BOTH NOTED WITH FINISH SLAB AT 0'-0". ACTUAL FINISH SLAB HEIGHTS WILL VARY BETWEEN MAIN BUILDING AND REFUSE ENCLOSURE. REFER TO CIVIL FOR ALL FINISH SLAB HEIGHTS.



PERSPECTIVE VIEW - REFUSE



A2 REFUSE ENCLOSURE ELEVATION  
3/8" = 1'-0"



B1 REFUSE ENCLOSURE ELEVATION  
3/8" = 1'-0"



Chick-fil-A  
**Chick-fil-A**  
 5200 Buffington Road  
 Atlanta, Georgia  
 30349-2998



**HFA**  
 HARRISON FRENCH  
 & ASSOCIATES, PLLC  
 1.479.273.7780  
 1705 S. Walton Blvd., Suite 3  
 Bentonville, Arkansas 72712  
 www.hfa-ac.com

NOT FOR CONSTRUCTION

**CHICK-FIL-A**  
**NEW RESTAURANT**  
 7609 EXCELSIOR RD  
 BAXTER, MN 56425

**FSR#06086**  
 BUILDING TYPE / SIZE: SSAM SE  
 RELEASE: 24.02

PROJECT STATUS

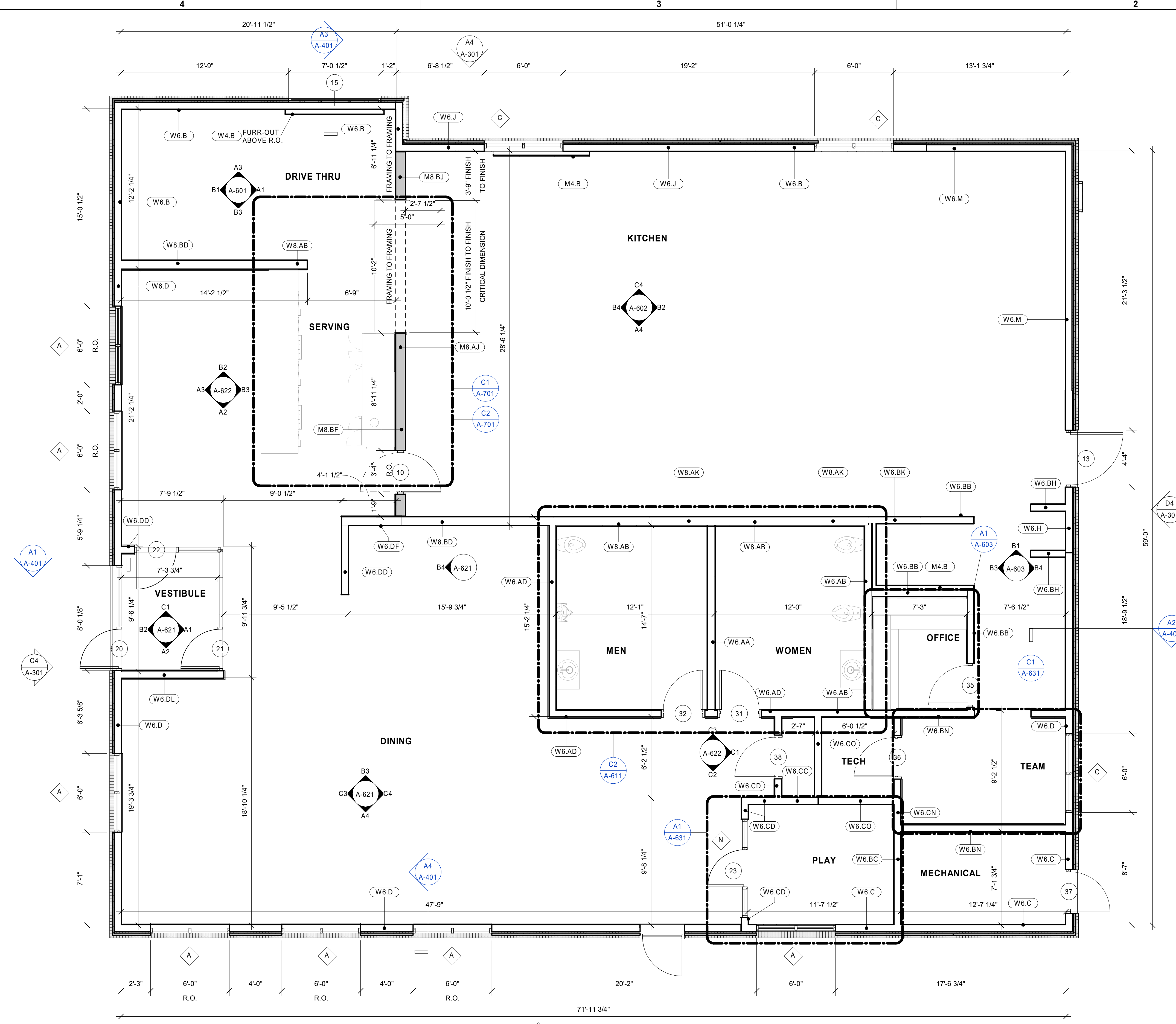
REVISION SCHEDULE	NO.	DATE	DESCRIPTION
	NA	NA	NA

CONSULTANT PROJECT # 16-25-60001  
 DATE 04/25/2025

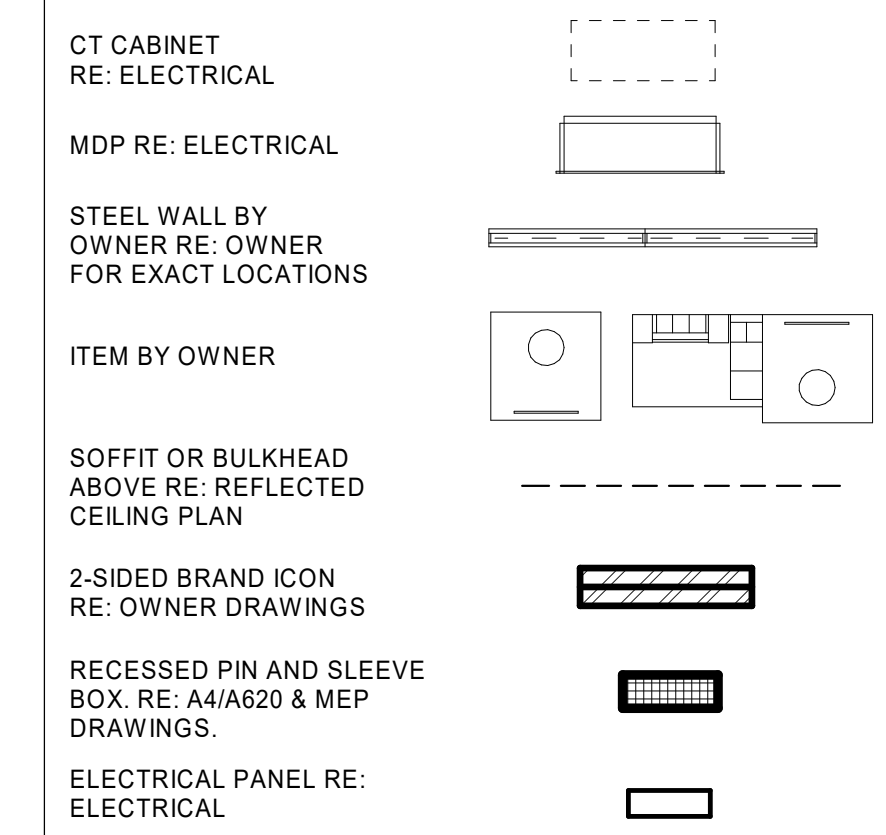
DRAWN BY DNS  
 Information contained on this drawing and in all digital files produced for above named project may not be reproduced in any manner without express written or verbal consent from authorized project representatives.

SHEET REFUSE ENCLOSURE

SHEET NUMBER **A-103**



**FLOOR PLAN LEGEND:**



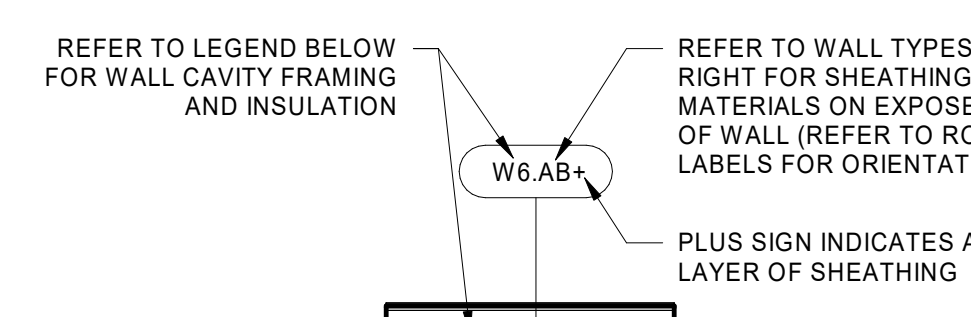
INSULATION SCHEDULE		
LOCATION	R-VALUE	THICKNESS
ROOF	R-29	5" RIGID
WALL (CONTINUOUS)	R-5	1" RIGID
WALL (CAVITY)	R-19	6" BATT
SLAB	R-10	2" RIGID

NOTES:  
 1. REFER TO FLOOR PLAN AND WALL SECTION SHEETS FOR INSULATION EXTENTS AND LOCATIONS.  
 2. REFER TO SPECIFICATIONS FOR INSULATION PRODUCT INFORMATION.

**FLOOR PLAN GENERAL NOTES**

- A.1 DIMENSIONS ARE FROM FACE OF STUD TO FACE OF STUD (UNLESS OTHERWISE NOTED).
- A.2 FASTENERS, ANCHORS, CLIPS, STRAPS, ETC WHICH ARE IN CONTACT WITH PRESERVATIVE AND/OR FIRE TREATED WOOD SHALL BE OF G-185 HOT DIPPED ZINC-COATED GALVANIZED STEEL, STAINLESS STEEL, OR AN APPROVED EQUAL.
- A.3 REFER TO CIVIL AND LANDSCAPE FOR LOCATIONS OF WALKS, BOLLARDS, LANDSCAPING AREAS, FLAG POLE, AND OTHER SITE ITEMS.
- A.4 REFER TO INTERIOR ELEVATIONS FOR LOCATIONS AND TYPES OF CORNER GUARDS.
- A.5 CONTRACTOR TO COORDINATE LOCATION OF POLE MOUNTED EXTERIOR CAMERA WITH STRONG SYSTEMS AND INSTALL UNDERGROUND CONDUIT AS REQUIRED. RE: ELECTRICAL.
- A.6 REFER TO ACCESSIBILITY PLAN AND FURNITURE DRAWINGS FOR SEATING LAYOUT & SPECIFICATIONS. CONTACT: OWNER.
- A.7 REFER TO ACCESSIBILITY PLAN AND OWNER DRAWINGS FOR CONDIMENT COUNTERS AND TRASH RECEPTACLES.
- A.8 NOT USED.
- A.9 REFER TO MILLWORK PLAN FOR RAISED CONCRETE CURB LOCATIONS.
- A.10 FREEZER AND COOLER DOORS AND HARDWARE SUPPLIED BY FREEZER/COOLER MANUFACTURER.

**B4 FLOOR PLAN**  
 1/4" = 1'-0"



**NOTE 1:** WALL BLOCKING SHALL BE THE GENERAL CONTRACTOR'S RESPONSIBILITY. BLOCKING SHALL INCLUDE, BUT IS NOT LIMITED TO: AREAS INDICATED ON INTERIOR ELEVATIONS FOR GRAB BARS, SHELVING BRACKETS, MONITORS, FIXTURES, ETC. AS WELL AS BLOCKING FOR WINDOWS, CANOPIES ROOF FRAMING, ROOF TOP UNITS, ETC.

**NOTE 2:** REFER TO STRUCTURAL DRAWINGS AND WALL SECTIONS FOR EXTERIOR WALL CONSTRUCTION.

**NOTE 3:** REFER TO FINISH PLAN FOR WALL FINISH INFO AND SPECIFICATIONS FOR WALL SHEATHING INFO

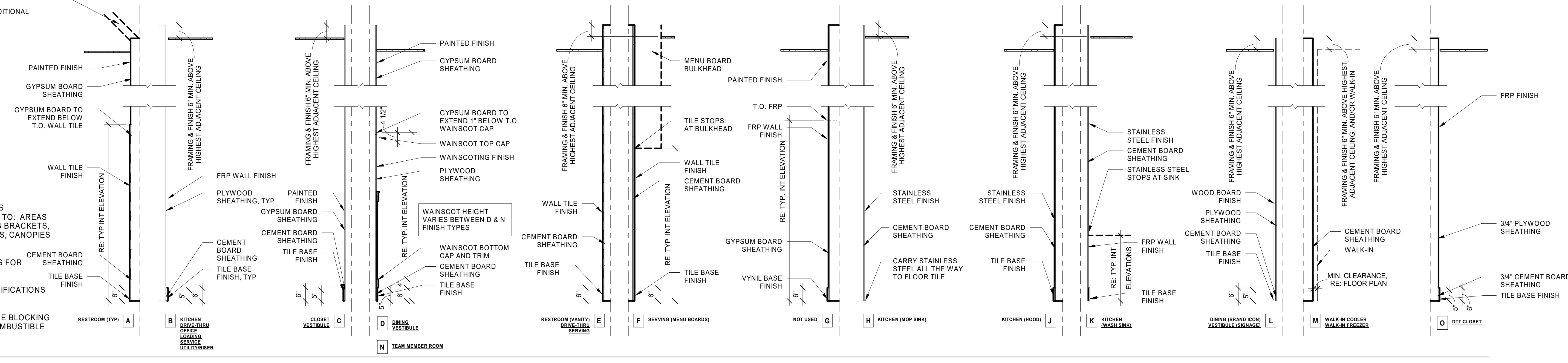
**NOTE 4:** GENERAL CONTRACTOR TO PROVIDE AND/OR VERIFY FIRE BLOCKING AT 10' MAX VERTICAL SPACING AND AT CEILING HEIGHT IN ALL COMBUSTIBLE STUD WALLS, ACCORDING TO LOCAL CODE REQUIREMENTS.

**WALL TYPES LEGENDS**  
 N.T.S.

REFER TO WALL TYPES ON THE RIGHT FOR SHEATHING AND MATERIALS ON EXPOSED SIDE(S) OF WALL (REFER TO ROOM LABELS FOR ORIENTATION)

PLUS SIGN INDICATES ADDITIONAL LAYER OF SHEATHING

BRACE INTERIOR PARTITIONS AS REQUIRED FOR COMPLIANCE WITH LOCAL BUILDING CODE. REFER TO REFLECTED CEILING PLAN FOR DRAFTSTOPPING PARTITION LOCATIONS THAT EXTEND TO DECK.



**Chick-fil-A**  
 5200 Buffington Road  
 Atlanta, Georgia  
 30349-2998



HFA-AE, L.T.D.  
 1.479.273.7780  
 1705 S. Walton Blvd., Suite 3  
 Bentonville, Arkansas 72712  
 www.hfa-ac.com

**NOT FOR CONSTRUCTION**

**CHICK-FIL-A**  
**NEW RESTAURANT**  
 7609 EXCELSIOR RD  
 BAXTER, MN 56425

**FSR#06086**

BUILDING TYPE / SIZE:	SSAM SE	
RELEASE:	24.02	
PRINTED FOR:		
<b>PROJECT STATUS</b>		
<b>REVISION SCHEDULE</b>		
NO.	DATE	DESCRIPTION
NA	NA	NA

CONSULTANT PROJECT #	16-25-60001
DATE	04/25/2025
DRAWN BY	DNS
Information contained on this drawing and in all digital files produced for above named project may not be reproduced in any manner without express written or verbal consent from authorized project representatives.	
<b>FLOOR PLAN</b>	

SHEET NUMBER  
**A-201**





8 PERSPECTIVE VIEW - REAR LEFT  
N.T.S.



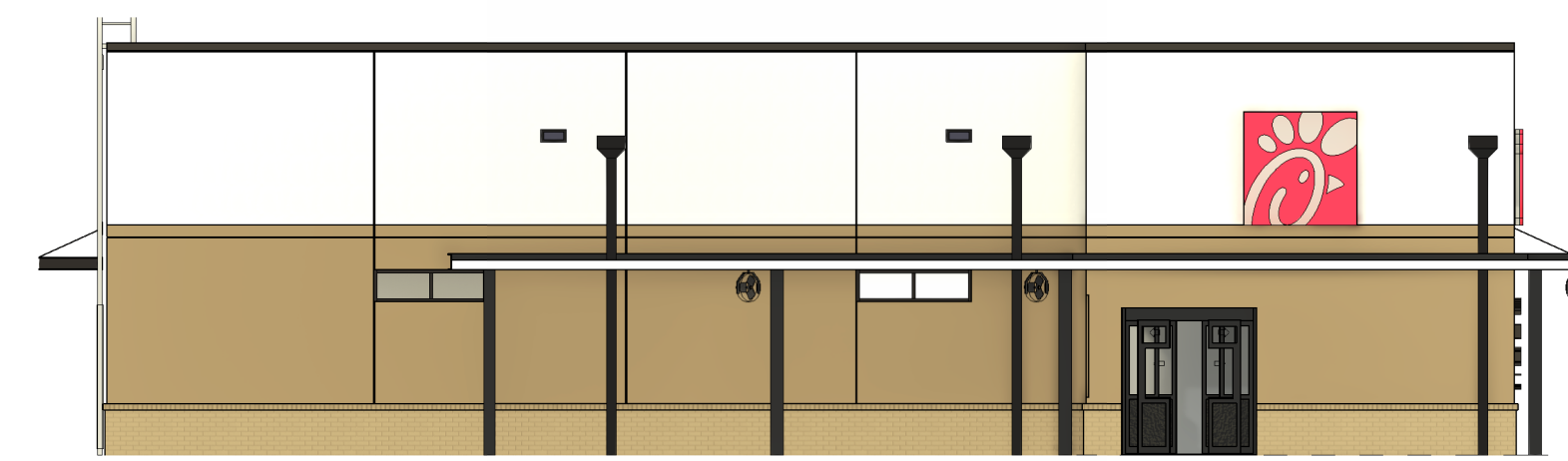
7 PERSPECTIVE VIEW - ENTRY  
N.T.S.



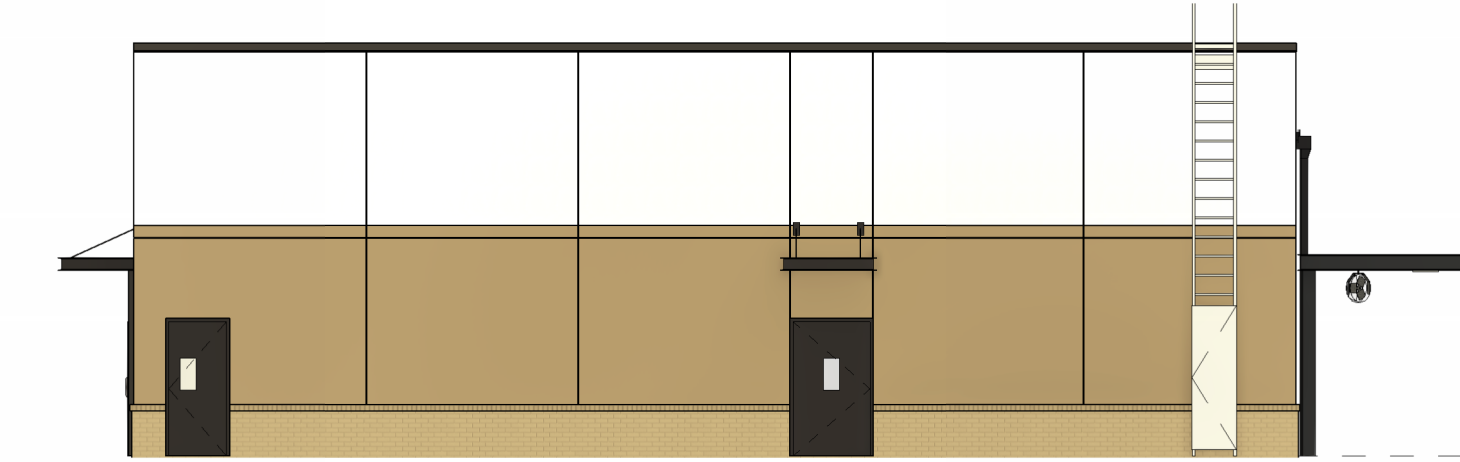
6 PERSPECTIVE VIEW - REAR RIGHT  
N.T.S.



5 PERSPECTIVE VIEW - FRONT RIGHT  
N.T.S.



4 EXTERIOR ELEVATION  
1" = 10'-0"



3 EXTERIOR ELEVATION  
1" = 10'-0"



2 EXTERIOR ELEVATION  
1" = 10'-0"



1 EXTERIOR ELEVATION  
1" = 10'-0"

EXTERIOR FINISHES	
<p><b>SC-1</b> STUCCO SYSTEM COLOR: WHITE FINISH: SAND MEDIUM</p>	<p><b>EC-1</b> PREFINISHED METAL COPING COLOR: DARK BRONZE</p>
<p><b>SC-2</b> STUCCO SYSTEM COLOR: ADOBE BROWN FINISH: SAND MEDIUM</p>	<p><b>PT-9</b> EXTERIOR PAINT COLOR: DARK BRONZE FINISH: SEMI-GLOSS</p>
<p><b>BR-4</b> BRICK VENEER COLOR: SAHARA SIZE: MODULAR THIN BRICK MORTAR: ARGOS SAN TAN</p>	<p><b>ST-1</b> STOREFRONT COLOR: DARK BRONZE</p>

A301_ATTACHED CANOPY SCHEDULE						
Mark	Description	Count	Overall Width	Overall Depth	Tie Back Mounting (Offset From Top)	Integral Lighting
C4-A	Exterior Canopy	2	5'-0"	4'-0"	1'-6"	Yes
C4-H	Exterior Canopy	1	22'-0"	4'-0"	1'-6"	Yes
Grand total		3				

A301_FINISH SCHEDULE - EXTERIOR						
MARK	DESCRIPTION	MANUFACTURER	MODEL NAME	MODEL NUMBER	COLOR	NOTE
EXTERIOR						
BR-A	BRICK VENEER (PRIMARY)	ACME	MODULAR THIN BRICK	*	SAHARA	
CM-1	WOOD COMPOSITE MATERIAL	RESYSTA INTERNATIONAL	FACADE CLADDING 7CH	RESP340812		
CP-1	CANOPY METAL FASCIA		DURA COAT	DC19ST-2703	DARK BRONZE	OIL RUBBED BRONZE METALLIC TEXTURE PVD
CP-2	CANOPY METAL DECK				WHITE	SMOOTH WHITE, HIGH GLOSS
EC-1	PARAPET WALL COPING	DUROLAST / EXCEPTIONAL METALS			DARK BRONZE (MATTE)	
PT-100	EXTERIOR PAINT	SHERWIN WILLIAMS	SHER-CRYL HIGH PERFORMANCE ACRYLIC #B66-350	SW 2807	ROOKWOOD	REFUSE ENCLOSURE, FINISH: SEMI-GLOSS ON DOOR FRAMES, SATIN ON WALLS
PT-113	EXTERIOR PAINT	SHERWIN WILLIAMS	SHER-CRYL HIGH PERFORMANCE ACRYLIC #B66-350	<varies>	DARK BRONZE	FINISH: SEMI-GLOSS
SC-1	STUCCO	STO	POWERWALL		STO WHITE	FINISH: SAND MEDIUM
SC-2	STUCCO	STO	POWERWALL		ADOBE BROWN	FINISH: SAND MEDIUM
ST-1	STOREFRONT	YKK	YES 45		DARK BRONZE (MATTE)	



Chick-fil-A

Chick-fil-A  
5200 Buffington Road  
Atlanta, Georgia  
30349-2998



HARRISON FRENCH & ASSOCIATES, LTD

t. 479.273.7780

1705 S. Walton Blvd., Suite 3  
Bentonville, Arkansas 72712  
www.hfa-ac.com

NOT FOR CONSTRUCTION

CHICK-FIL-A  
NEW RESTAURANT

7609 EXCELSIOR RD  
BAXTER, MN 56425

FSR#06086

BUILDING TYPE / SIZE: SSAM SE

RELEASE: 24.02

PRINTED FOR:

PROJECT STATUS

REVISION SCHEDULE

NO. DATE DESCRIPTION

NA N/A

CONSULTANT PROJECT # 16-25-60001

DATE 04/25/2025

DRAWN BY DNS

Information contained on this drawing and all digital files produced for above named project may not be reproduced in any manner without express written or verbal consent from authorized project representatives.

SHEET DESIGN OVERVIEW

SHEET NUMBER

X-900